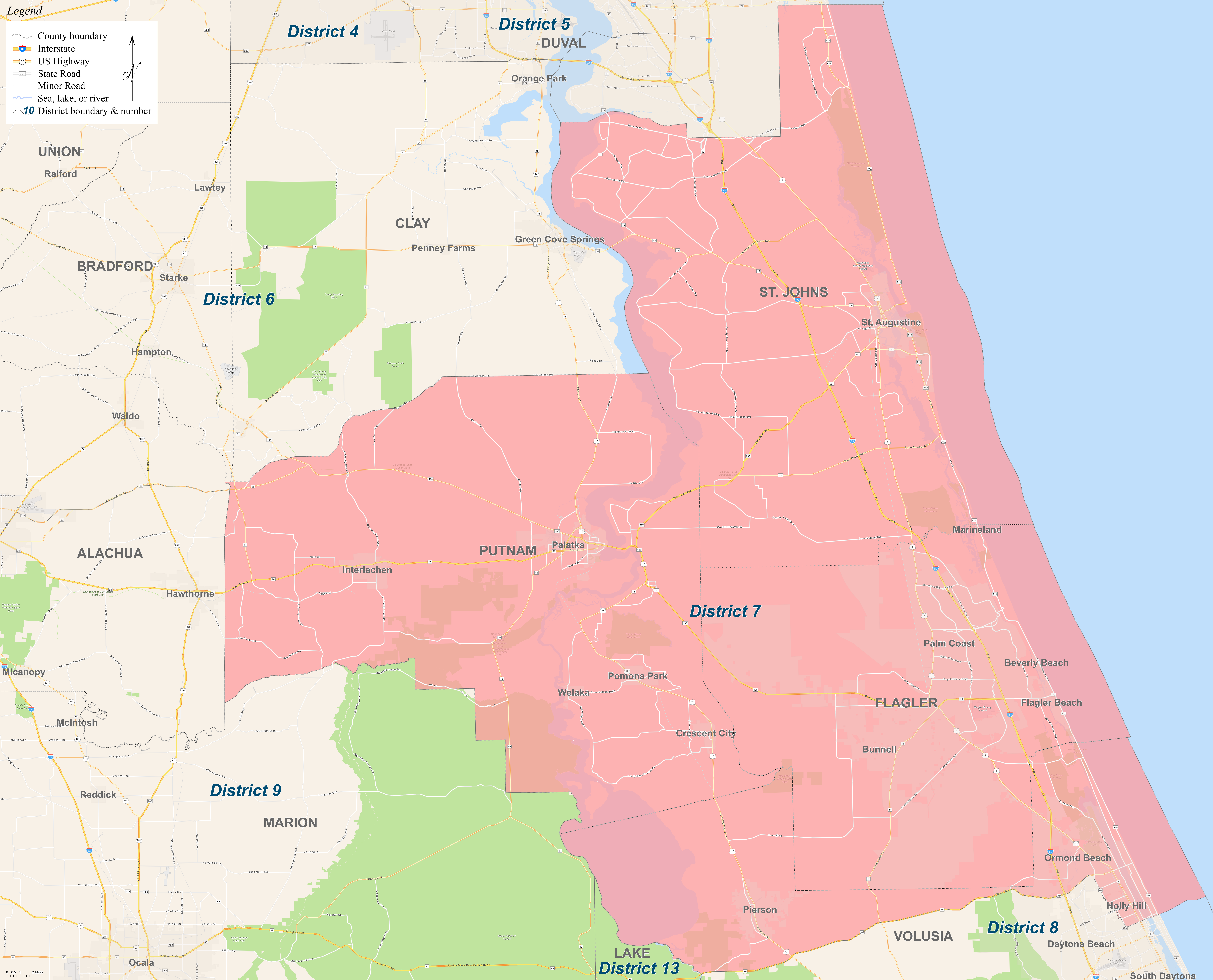
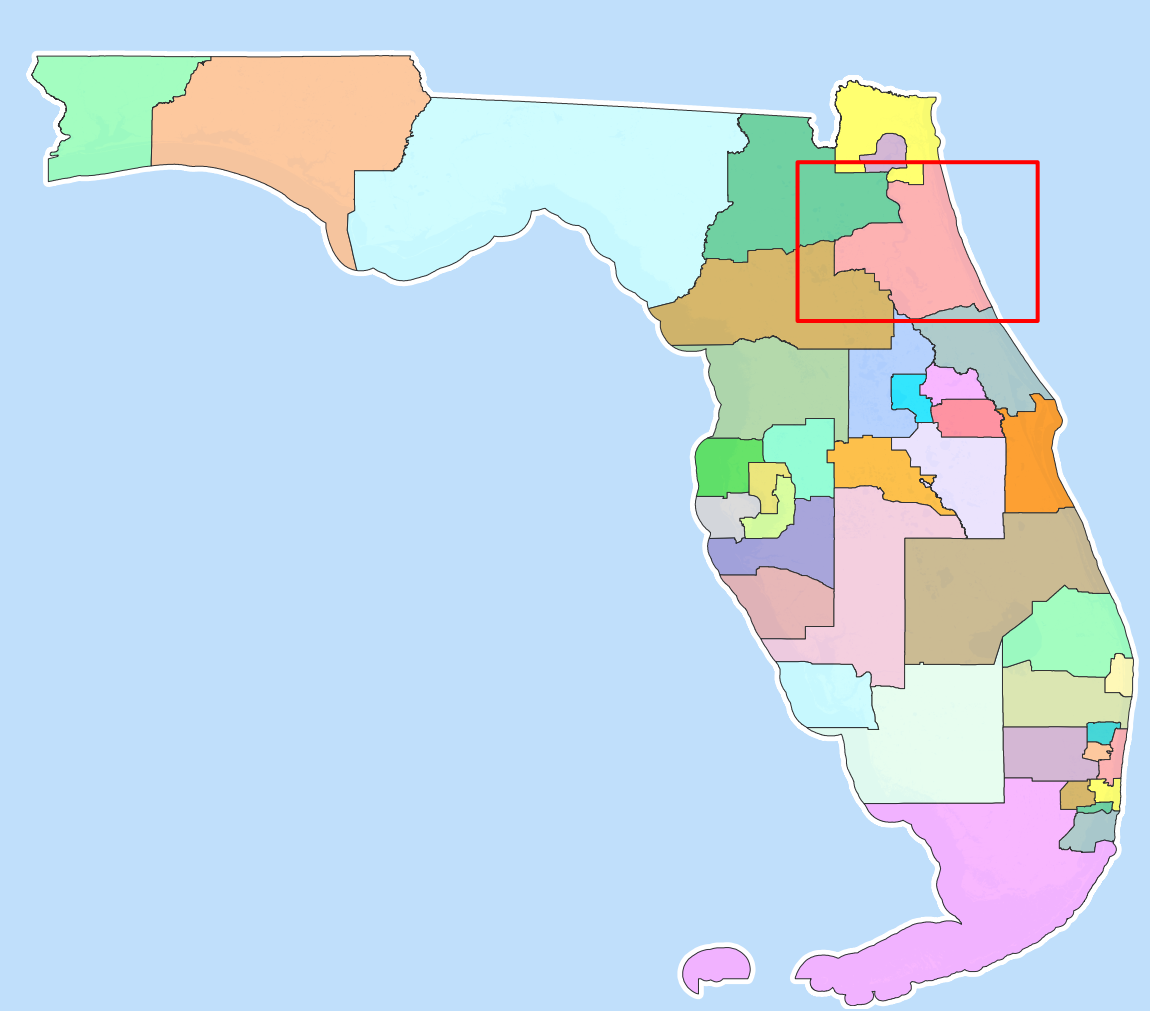
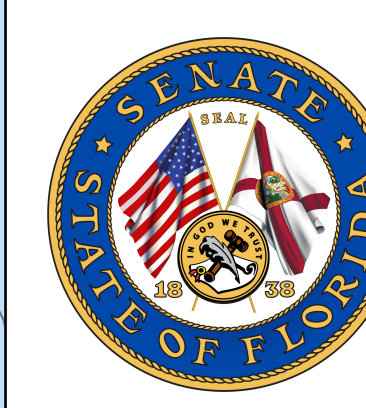


Legend

- County boundary
- Interstate
- US Highway
- State Road
- Minor Road
- Sea, lake, or river
- 10** District boundary & number



Florida
State Senate Districts
S027S8058
 * * * * *
CS/SJR 100
February 3, 2022



Map produced by
 staff of the Florida
 Senate Committee on
 Reapportionment

Scan QR
 Code to View
 Interactive Map

