

**COMMITTEE MEETING EXPANDED AGENDA**

**BUDGET SUBCOMMITTEE ON EDUCATION PRE-K - 12  
APPROPRIATIONS**

**Senator Simmons, Chair  
Senator Montford, Vice Chair**

**MEETING DATE:** Thursday, October 20, 2011  
**TIME:** 10:45 a.m.—12:45 p.m.  
**PLACE:** *Pat Thomas Committee Room, 412 Knott Building*

**MEMBERS:** Senator Simmons, Chair; Senator Montford, Vice Chair; Senators Detert, Dockery, Flores, Lynn, Ring, Siplin, and Wise

TAB	BILL NO. and INTRODUCER	BILL DESCRIPTION and SENATE COMMITTEE ACTIONS	COMMITTEE ACTION
1	Charter School Accountability and Innovation		Discussed
2	Traditional School Flexibility		Discussed
3	Estimating Conference Update		Discussed
Other Related Meeting Documents			



# Charter School Accountability and Innovation

Presented to the Florida Senate  
Budget Subcommittee on Education PK-12 Appropriations

Presented by the Florida Department of Education  
Office of Independent Education and Parental Choice

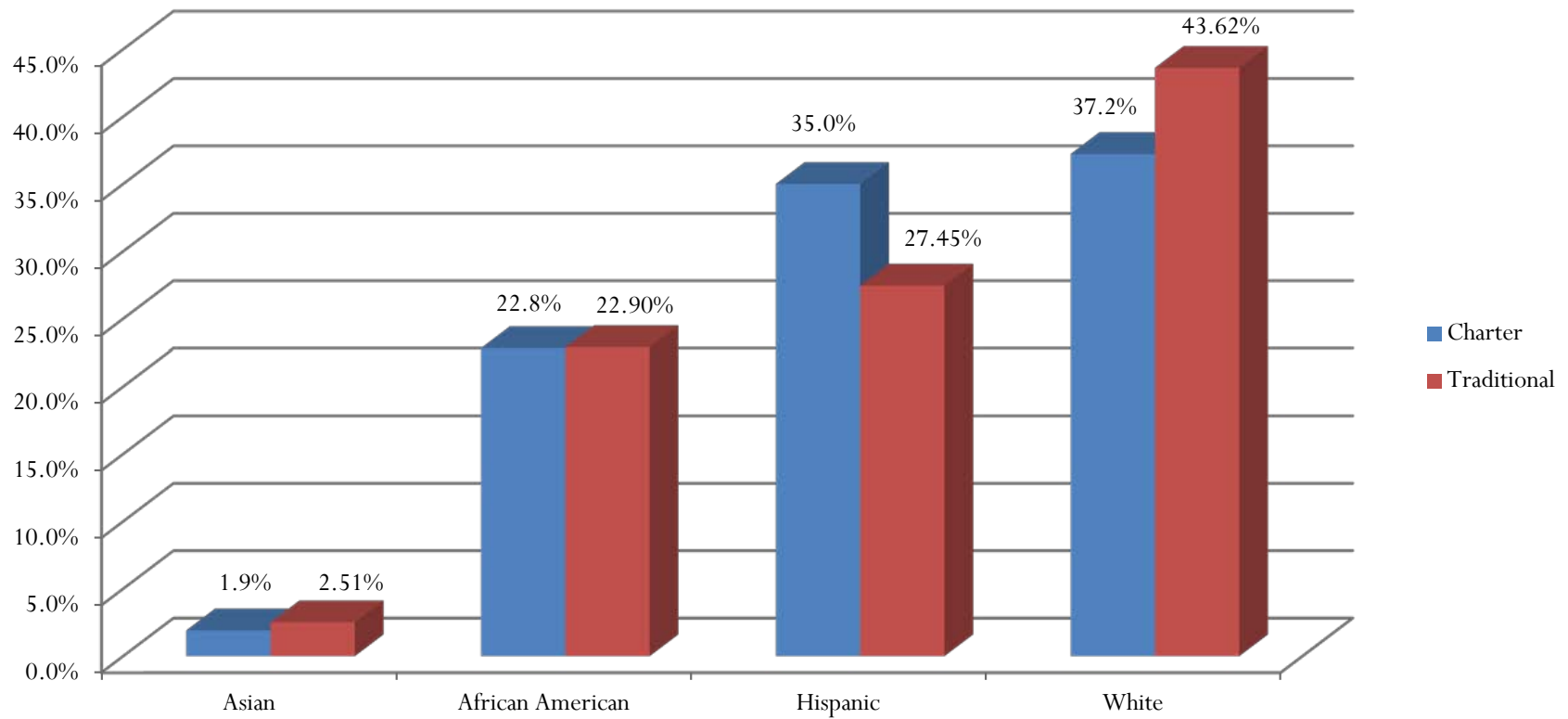


# Charter Schools 2011-12

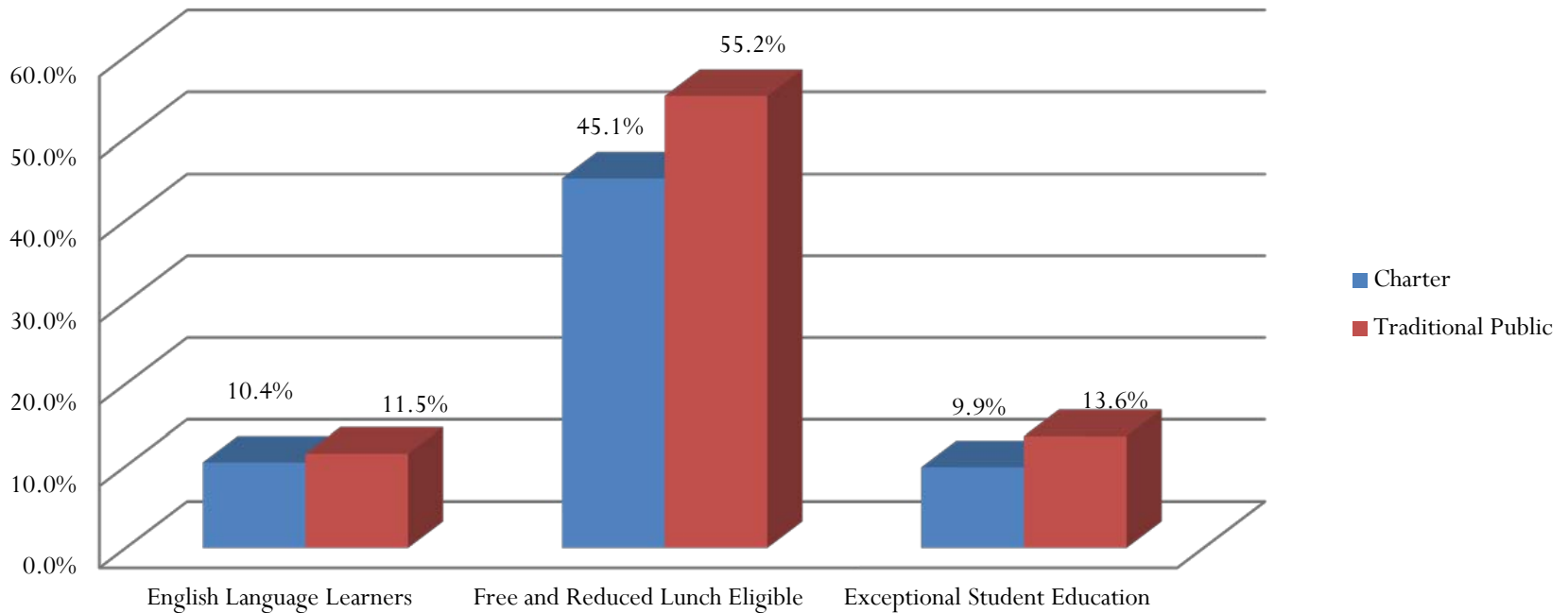
---

- 519 Operating Charter Schools
- 44 School District
- 348 Applications (for 12/13 school year)
- 53 Virtual Applications

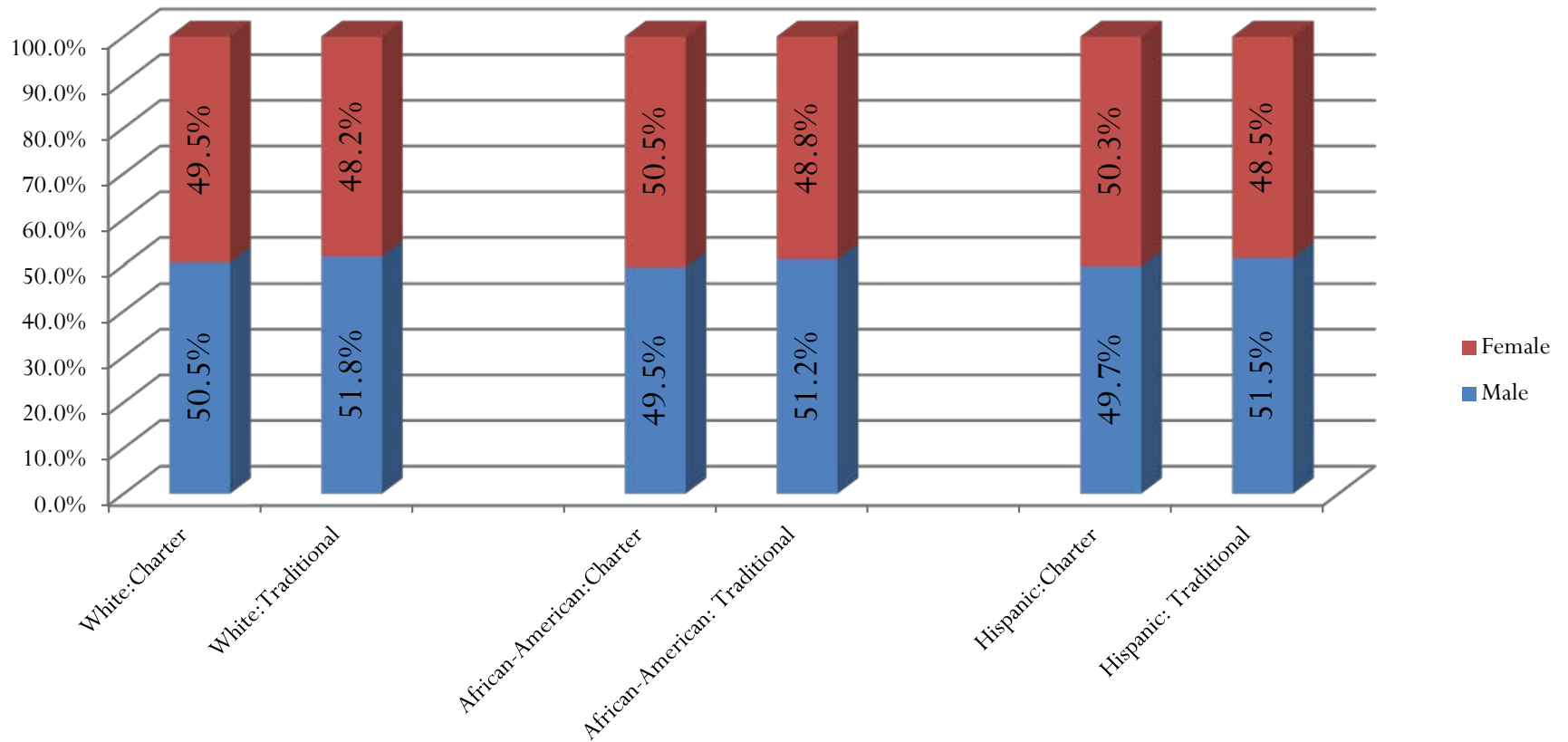
# Public School Demographics 2010-11



# Public School Demographics 2010-11



# Gender by Race Comparisons 2010-11

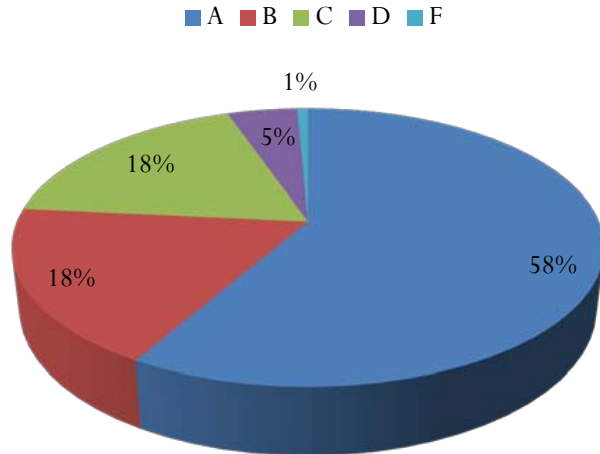


## School Grade Distribution- 2010-11

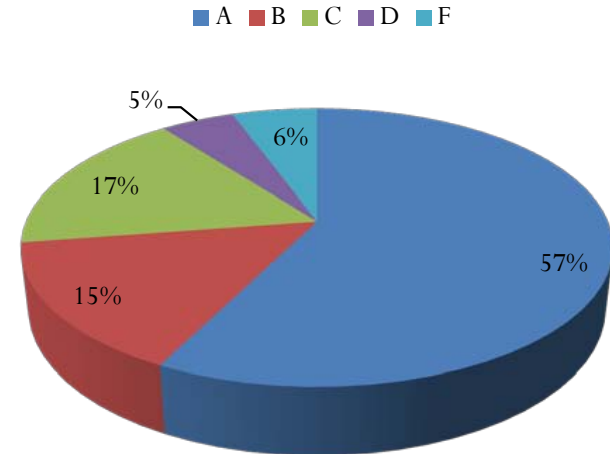
Elementary and Middle



### Traditional



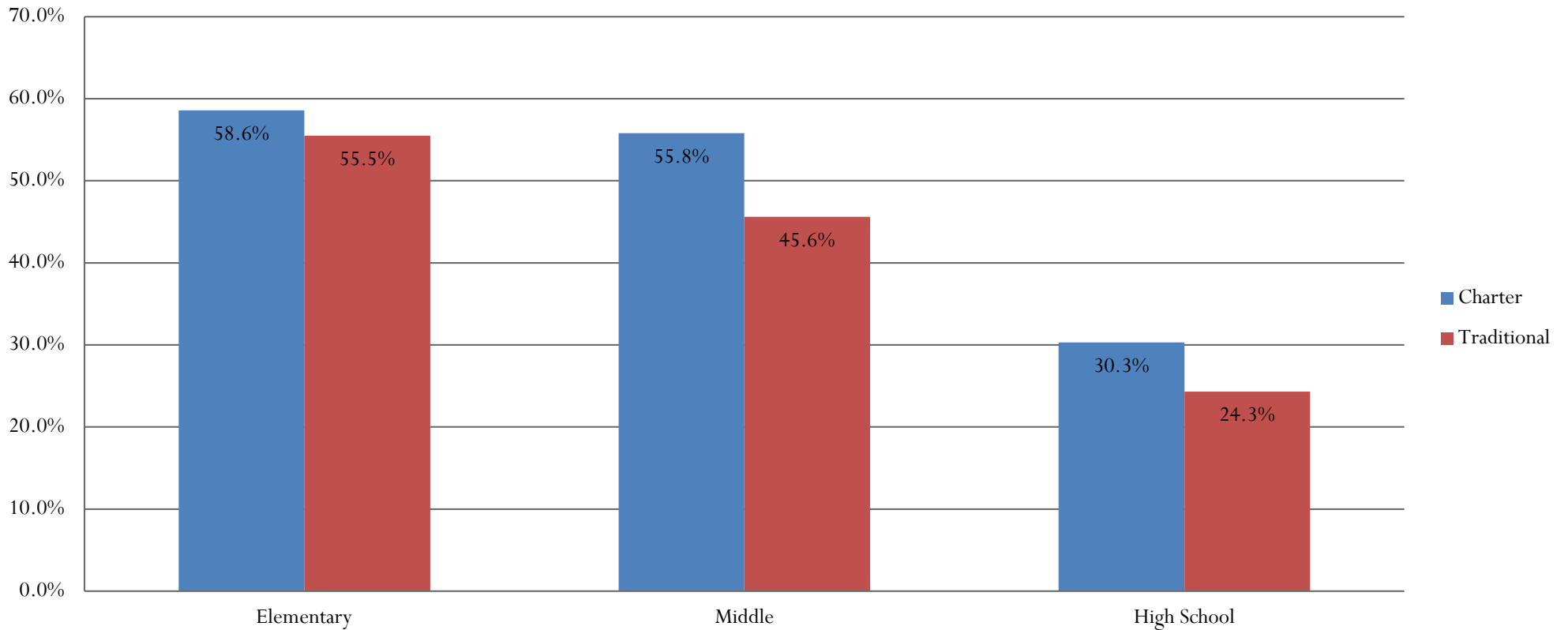
### Charter



# FCAT Reading: African-American Students

2010-11

Percent of Students Scoring a Level 3 or Above on FCAT Reading  
Charter Schools and Traditional Public Schools  
African-American Students

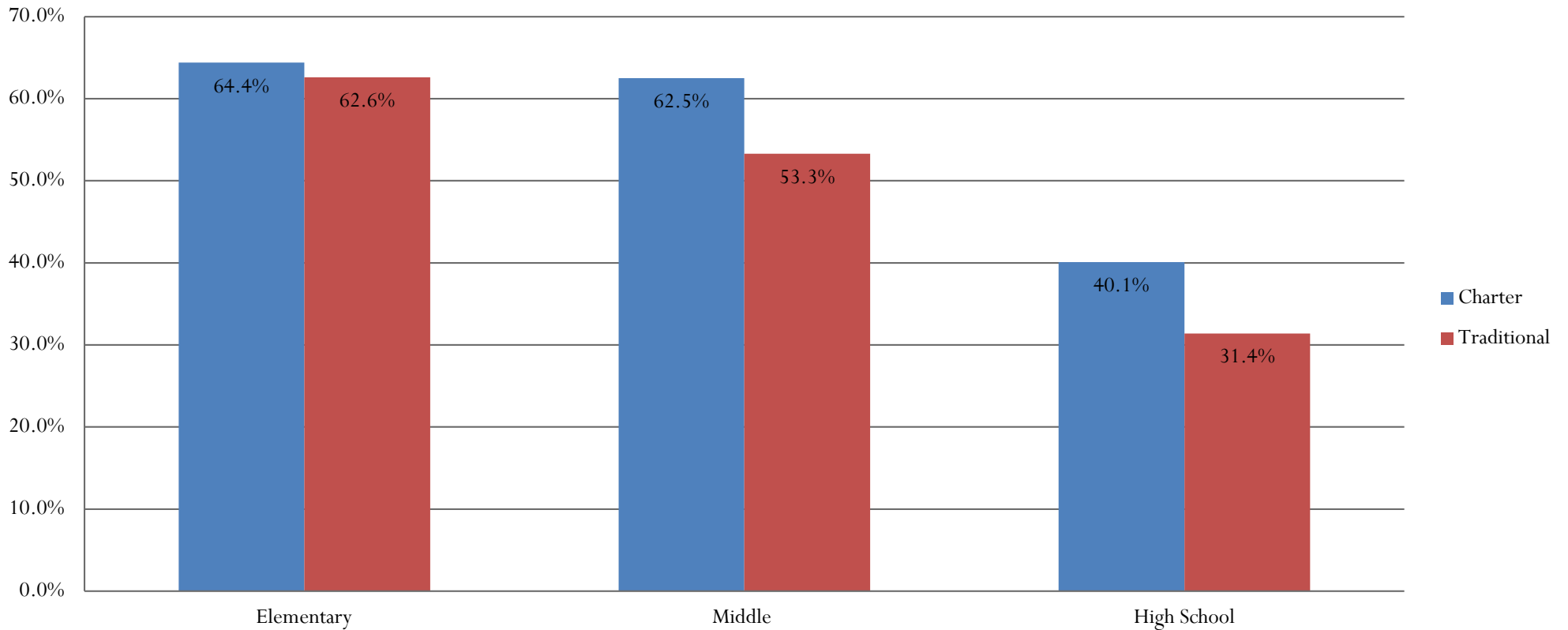




# FCAT Reading: Free and Reduced Lunch

2010-11

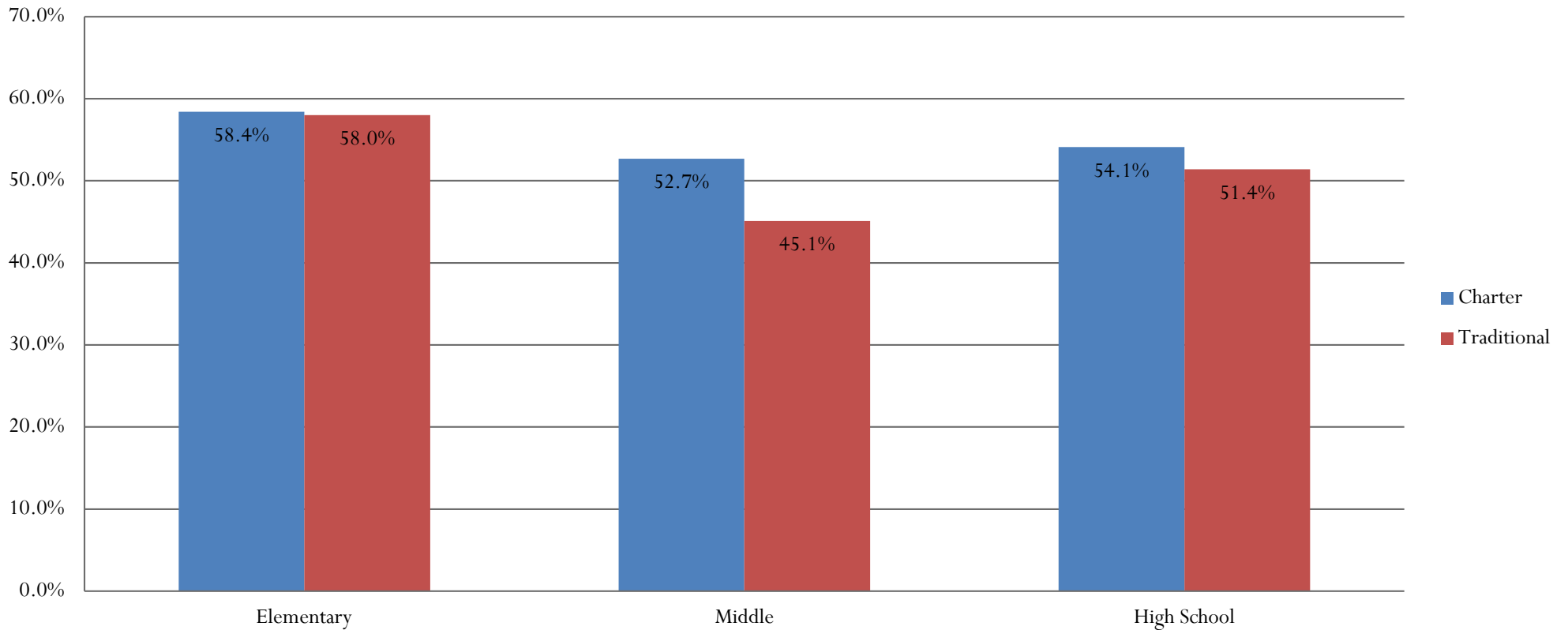
Percent of Students Scoring a Level 3 or Above on FCAT Reading  
Charter Schools and Traditional Public Schools  
Free and Reduced Lunch (FRL)



# FCAT Math: African-American Students

2010-11

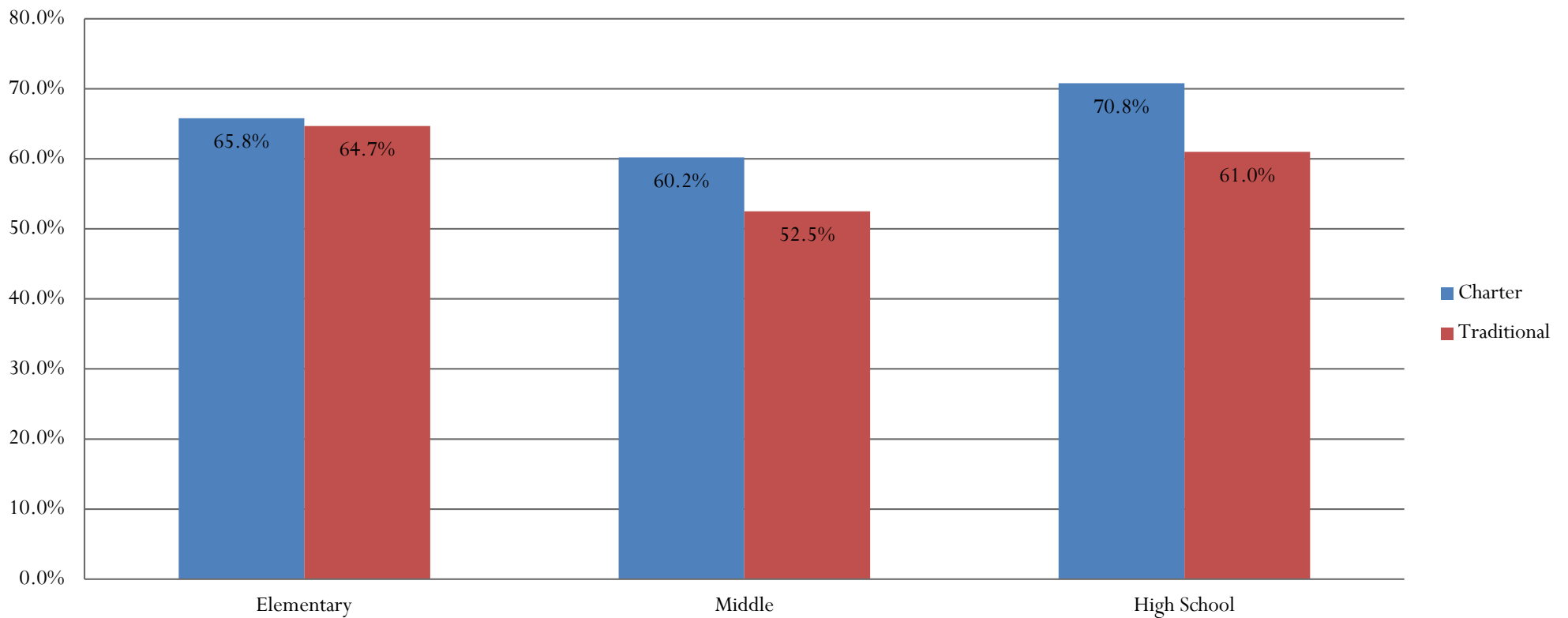
Percent of Students Scoring a Level 3 or Above on FCAT Math  
Charter Schools and Traditional Public Schools  
African-American Students



# FCAT Math: Free and Reduced Lunch

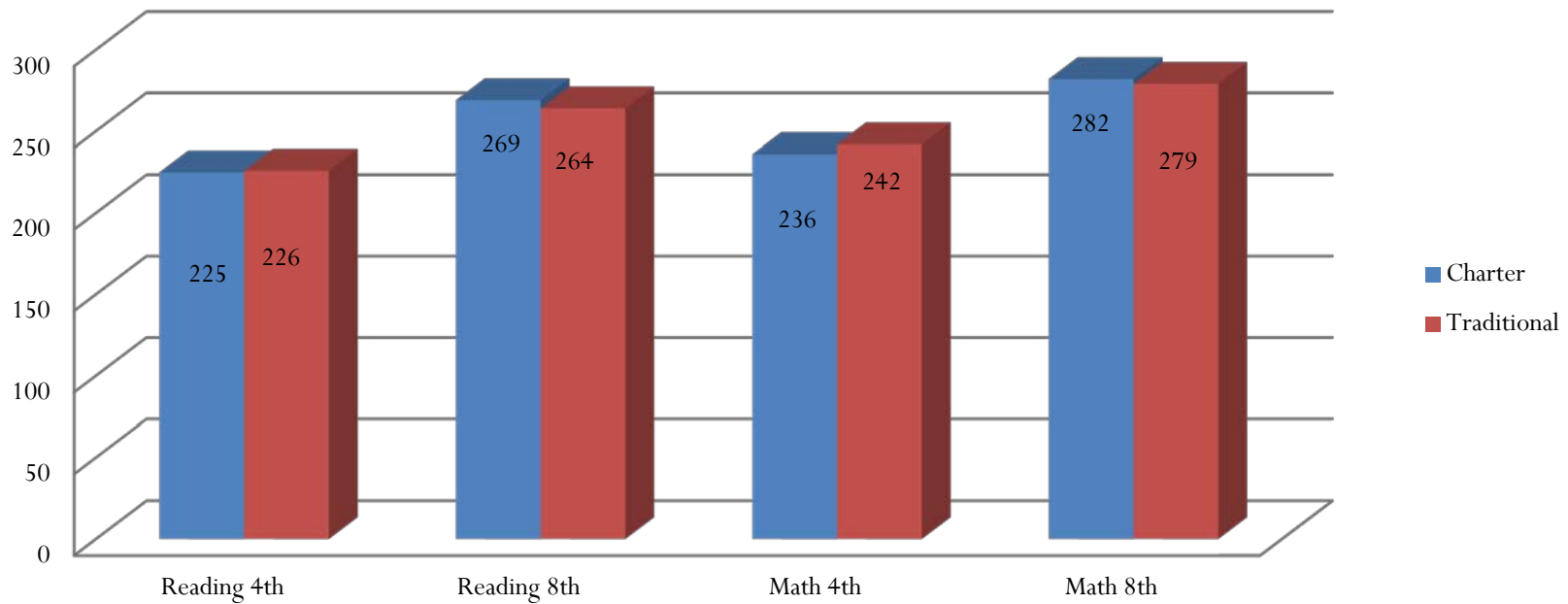
2010-11

Percent of Students Scoring a Level 3 or Above on FCAT Math  
Charter Schools and Traditional Public Schools  
Free and Reduced Lunch (FRL)



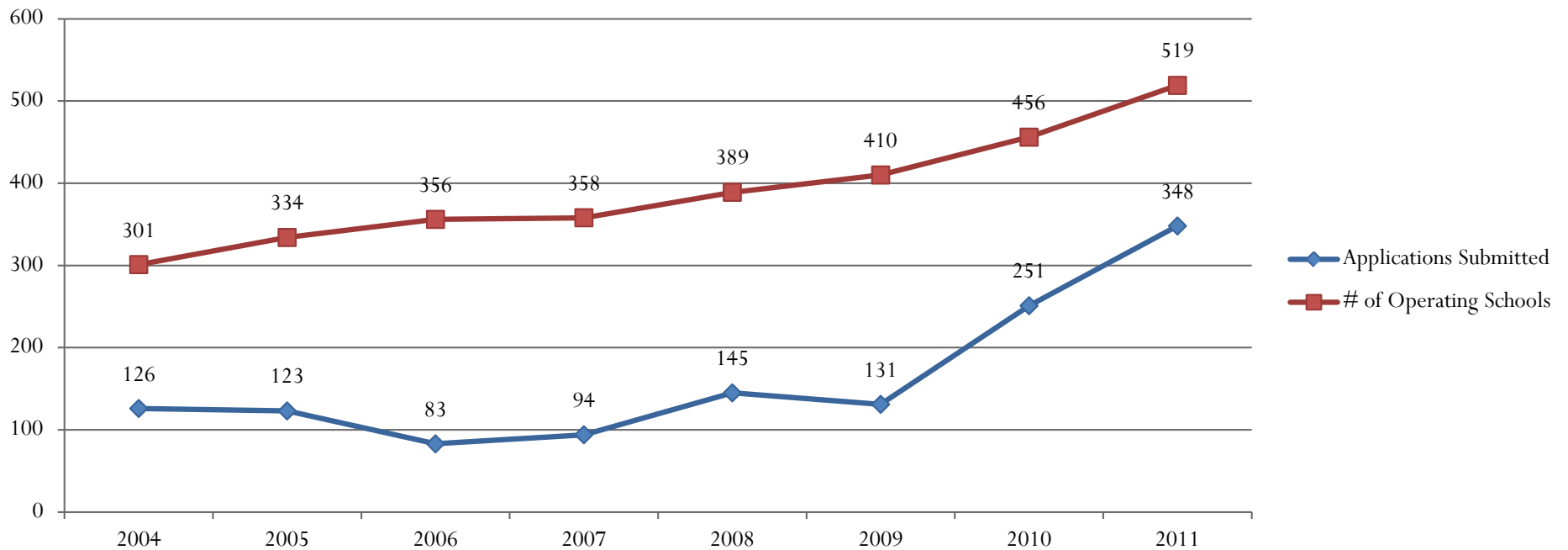
# Florida Public School Performance

NAEP Composite Scores  
2009



# Historical Trends

## Charter School Growth: 2004-Present





# Charter School Funding

- Florida Education Finance Program
  - Funded on same basis as Traditional Public Schools
  - Funding flows through District
  - Districts withholds 5% Admin Fee
    - Admin fee withheld on first 250 students
    - HP Charters pay 2% Admin Fee
    - Services: contract mgt., FTE and data reporting, ESE administrative services, National School Lunch Program Eligibility, test administration services, processing of teacher certificate data, access to student information systems

# Funding Continued: Facilities

- Charter School Capital Outlay (s. 1013.62)
  - 2010-11: 362/459 Charter Schools received Capital Outlay
  - Eligibility Requirements
    - 3+ years operation
    - Satisfactory Student Achievement
    - Financially secure
- Capital Improvement Millage (1.5 mil)
  - Districts have authority to share
    - Sarasota and Sumter have policies to share with charters

## Funding Continued: Facilities

- | <b>2011-12 Projected</b>            | <b>Charter</b>      | <b>Traditional</b>     |
|-------------------------------------|---------------------|------------------------|
| Peco Maintenance                    | \$55,200,000        | \$0                    |
| Capital Outlay-Debt Service (Tag)   | \$0                 | \$14,197,229           |
| Local Capital Outlay Ad Valorem Tax | \$0                 | \$1,907,569,571        |
| 1/2 cent Sales Tax                  | \$0                 | \$379,133,825          |
| Impact Fees                         | \$0                 | \$90,267,809           |
| <b>Total</b>                        | <b>\$55,200,000</b> | <b>\$2,391,168,434</b> |
| <b>Avg\$ per Student</b>            | <b>\$390</b>        | <b>\$960</b>           |



# Funding Continued: Federal Funds

- Title I
  - Free and Reduced Lunch Based Eligibility
  - Charter School receives funds
- Title II, III, IV
  - Charter Schools receive services in lieu of funds
    - Reduces reporting requirements
    - Reduces autonomy
- Individual with Disabilities Education Act
  - Funds or Services (primarily services)
  - District determines priorities for IDEA funds



# Funding Continued: Federal Funds

---

- Charter Schools Program Grant (CSP)
  - FDOE recently awarded \$104m
  - Competitive grant process
  - Start-up support for 45 schools per year
  - Prioritize high-quality schools in high-need neighborhoods

# Public School Accountability

	Charter	Traditional
FCAT	✓	✓
End of Course Exams	✓	✓
NAEP	✓	✓
School Grading System	✓	✓
AYP Determinations	✓	✓
Differentiated Accountability	✓	✓
Choice with Transportation		✓
Terminations/Non Renewals	✓	

# Charter School Accountability

---

- Terminations/Non-Renewals
  - Student Achievement
  - Financial
  - Violation of Law
  - Other good cause

# Charter School Flexibility

- Charter Schools Exempt from Education Code- except:
  - Any statute that specifically applies to charter schools
  - Student assessment program and school grading system
  - Statutes pertaining to services to student with disabilities, civil rights, and discrimination
  - Statutes pertaining to health, safety, welfare
  - Public Meetings and Public Records
  - Student Success Act (SB736)
  - Section 1003.03 relating to class size (school wide average)

# Charter School Flexibility

- Curriculum
  - Must be aligned with NGSSS
- Human Capital Decisions
  - <1% offer professional services contracts
- Allocation of Resources
  - Time
  - People
  - Materials
- Facilities
  - SREF Exception

# School Flexibility

---





# Issue: Class Size

---

- Currently, charter schools are allowed to adhere to the class size amendment at the school level
- All other public schools are required to meet the terms of the amendment at the class level, at a cost of millions of dollars a year
- Both charter schools and traditional public schools receive the same class size reduction operational allocation





# Recommendations: Class Size

---

- Allow all public schools of choice (i.e. magnet schools, alternative schools etc) to meet class size at the school level only
- 1002.31(2) defines choice programs
- Require parents to sign a wavier signifying their understanding that the school meets class size at the school level only



# Categorical and Federal Funding

---

- School districts are hampered in their ability to meet the unique needs of their district by prescriptive regulations which detail how they must spend state or Federal allocations



# Recommendations: Categorical and Federal Funding

---

- Require a declaration of a School Board's intent to comply with the intent of the Legislative Appropriation
- A district may apply to the DOE for a waiver to expend allocated dollars on their academic program



# Appropriating Funds

---

- The Legislature appropriates funds to districts for certain uses
- The DOE currently has rules in place which requires schools and districts to redirect local, state and Federal funds



# Recommendations: Appropriating Funds

---

- Prohibit the DOE from creating rules that would require schools or school districts to redirect any monies beyond that of their original intent
- Develop a process by which schools can apply for a waiver from rules which they find unnecessarily costly or outside their specific academic goals



# Facilities

## State Requirements for Educational Facilities (SREF)

---

- Charter schools have the ability to purchase existing structures (i.e. a shopping center or grocery store) and transform them into an educational facility with less expense due to their ability to meet state building code as opposed to SREF



# Recommendations: Facilities

---

- Allow school districts to purchase and renovate existing buildings (Adaptive Reuse)
- Allow districts exemption from SREF, same as charter schools for these specific projects



# Recommendations: Facilities

---

- Modernize the statute by expanding exemptions from FISH to include spaces that are not intended to house students throughout the school day





# Examples

---

- Science Labs
- Secondary Music Rooms
- Computer Labs
- Gymnasiums



# Impact

---

- Increased flexibility will allow districts to be creative and pursue innovative ways to educate students in our rapidly changing world
- Monies saved in these areas will benefit district academic programs
- Funds saved will aid in districts compliance with class size mandates

## School District Innovation and Efficiency Act of 2012

10/12/2011

A bill relating to public education innovation and efficiency.

Whereas Florida's education system is now ranked 5<sup>th</sup> in the nation according to Education Week's 2011 Quality Counts Report – up from 31<sup>st</sup> in 2007.

Whereas Florida's students were stellar in their performance on the National Assessment of Educational Progress or NAEP. Florida was one of only four states to improve significantly in both 4<sup>th</sup> and 8<sup>th</sup> grade reading on NAEP.

Whereas Florida's participation on the SAT has reached its highest point yet, with over 100,000 of its 2009 public and nonpublic high school graduates having taken the SAT. The combined score of African-American test takers is 7 points higher than the national average for African-American students. The combined score of Hispanic test takers is 42 points higher than the national average for Hispanic students.

Whereas Florida's participation on the ACT has reached its highest point yet, with over 100,000 of its graduating seniors having taken the ACT – a 12% increase compared to 2008.

Whereas Florida has the highest percentage of students in the nation who took an Advanced Placement (AP) exam in high school, and is tied for 5<sup>th</sup> in the percent of those students earning a 3 or higher on an AP exam. Florida had the greatest one-year increase in the percentage of students in the class of 2009 receiving a 3 or higher on an AP exam. Seven Florida public schools were recognized in the AP report as leading the nation in increasing access to AP courses among traditionally underserved students – no other state has as many public schools recognized.

Whereas the 2010 FCAT results for grades 4-10 reading, mathematics and science showed increases in the percent of students scoring proficient and above in almost every middle and high school grade level in reading and mathematics. Science achievement also showed positive momentum with gains in all tested grade levels. In Writing, approximately 95% of students in grades 4, 8, and 10 scored at or above 3 on the six-point grading scale.

Whereas in 2010, 74% of elementary schools earned an "A" or a "B" school grade and 78% of middle schools earned an "A" or a "B" school grade.

Whereas the performance of Florida's high schools reached record levels in 2009-10 under a new expanded high school grading system. Nearly three-quarters (71%) of the state's high schools achieved either an "A" or "B" grade during the 2009-10 school year.

Whereas Florida's high school graduation rate soared to new heights this year, continuing a five-year trend of increases. The state's graduation rate climbed more than two-and-a-half percentage points to 79 percent. Included in this increases was a 3.5 percentage point increase for African-

American students, a 3.2 percentage point increase for Hispanic students and a 2.3 percentage point increase for White students.

Whereas Florida's dropout rate declined for a fifth-straight year to a record low of 2 percent.

Now therefore, in order for Florida's students to continue to be successful and school districts to be innovative and efficiently operated; school districts shall have the statutory and regulatory flexibility to move the public school system from an industrial model to a knowledge model by revolutionizing the school calendar and day; expanding public school choice; expanding public school virtual education options and incorporating other innovations that will increase student achievement and incorporate efficiency into the delivery of public education.

Section 1. Section 1003.62, relating to statutory and regulatory relief for knowledge innovation and business efficiency:

1003.62 – Statutory and regulatory relief for knowledge innovation and business efficiency.—

(1) This Act shall be known as the "Public Education Innovation and Efficiency Act of 2012." The intent of this legislation is to provide the statutory and regulatory flexibility for school districts to continue to reform public education in Florida. School districts are exempt from all statutes in chapters 1000-1013 with the intent of continuing significant improvements in student achievement through a variety of means including, but not limited to:

- (a) Developing public/private partnerships with local communities to expand opportunity for increased student performance;
- (b) Expanding public school parental choice programs within the district to meet local community employment and educational needs;
- (c) Expanding public school virtual education programs; and
- (d) Authorizing greater flexibility in use of public tax dollars that can redirect funds for classroom expenditures, while complying with constitutional and identified statutory requirements assigned to school districts.

(2) EXEMPTION FROM STATUTES AND RULES.--

(a) A school district shall be exempt from all statutes in chapters 1000-1013 and corresponding administrative rules. However, school districts shall be in compliance with the following statutes in chapters 1000-1013.:

- 1. Those statutes specifically pertaining to the student assessment program and school grading system.
- 2. Those statutes pertaining to the provision of services to students with disabilities.
- 3. Those statutes pertaining to civil rights, including s. [1000.05](#), relating to discrimination.
- 4. Those statutes pertaining to student health, safety, and welfare.

5. Those statutes governing the election, duties and responsibilities of district school board members.

6. Those statutes governing the election or appointment of and duties and responsibilities of the district school superintendent.

(b) Additionally, any school district shall be in compliance with the following statutes:

1. Section [286.011](#), relating to public meetings and records, public inspection, and criminal and civil penalties.

2. Chapter 119, relating to public records

3. Section 1003.03, relating to the maximum class size, except that the calculation for compliance pursuant to s. 1003.03 shall be at the average at the school level for any school program in which a parent or guardian chooses for their student's placement rather than the school district assignment.

4. Section 1012.22(1)(c), relating to compensation and salary schedules.

5. Section 1012.33(5), relating to workforce reductions.

6. Section 1012.335, relating to contracts with instructional personnel hired on or after July 1, 2011.

7. Section 1012.34, relating to the substantive requirements for performance evaluations for instructional personnel and school administrators.

8. Those statutes pertaining to financial matters, including chapter 1010, except that s. 1010.20(3).

9. Those statutes pertaining to planning and budgeting, including chapter 1011, except s. 1011.62(9)(d), relating to the requirement for a comprehensive reading plan. A district that is exempt from submitting this plan shall be deemed approved to receive the research-based reading instruction allocation.

10. Those statutes pertaining to educational facilities, including chapter 1013, except that s. 1013.20, related to cover walkways for portables and s. 1013.21 relating to the use of relocatable facilities that exceed 20 years of age, are eligible for exemption.

11. Those statutes relating to instructional materials, except that s. 1006.37, relating to the requisition of state-adopted materials from the depository under contract with the publisher, and s. 1006.40(3)(a), relating to the use of 50 percent of the instructional materials allocation, shall be eligible for exemption.

12. This section.

(4) Governing Board.—The governing board of the school district shall be the duly elected district school board.

(5) ANNUAL REPORT BY SCHOOL DISTRICT.--Each school district implementing education innovation and efficiency pursuant to this section shall submit an annual report to the President of the Senate, Speaker of the House, Governor and the State Board of Education that delineates the innovative and efficiency strategies and the results on student performance and district operational efficiency. The annual report shall be due each year on or before January 15<sup>th</sup>.

# Education Budget: Update from Supporting Conferences

---

October 20, 2011

Presented by:



The Florida Legislature  
Office of Economic and  
Demographic Research  
850.487.1402  
<http://edr.state.fl.us>

# PK-12 FTE Total Enrollment

## Historical and Forecasted

Fiscal Year	Total PK-12 FTE	Change	% Change
2000-2001	2,388,011.08	59,160.00	2.50%
2001-2002	2,453,550.00	65,538.92	2.70%
2002-2003	2,497,314.00	43,764.00	1.80%
2003-2004	2,558,491.53	61,177.53	2.40%
2004-2005	2,609,593.94	51,102.41	2.00%
2005-2006	2,641,121.29	31,527.35	1.20%
2006-2007	2,638,331.10	<b>-2,790.19</b>	<b>-0.10%</b>
2007-2008	2,631,277.10	<b>-7,054.00</b>	<b>-0.30%</b>
2008-2009	2,617,371.52	<b>-13,905.58</b>	<b>-0.50%</b>
2009-2010	2,629,327.35	11,955.83	0.46%
2010-2011	2,642,510.78	13,183.43	0.50%
2011-2012 Estimate (Oct 2011)	2,661,316.65	18,805.87	0.71%
2012-2013 Forecast (Oct 2011)	2,691,883.15	30,566.50	1.15%
2013-2014 Forecast (Oct 2011)	2,712,132.79	20,249.64	0.75%
2014-2015 Forecast (Oct 2011)	2,729,424.48	17,291.69	0.64%

NOTE: Forecast based on the Education Estimating Conference held October 10, 2011.

# Key Assumptions and Trends in PK-12 Public School FTE Enrollment

- ASSUME: Recent historical growth patterns continue.
- TREND: 2011 Legislation affects FTE due to changes in charter school and virtual education enrollment options.
- TREND: Kindergarten enrollment increases with larger birth cohort relative to prior year entering kindergarten. This increase is reduced in 2011-12 and 2012-13 by a lower percentage share of kindergarten enrollment in public schools than there used to be. The public percentage share increases in 2013-14 with public virtual education pulling students into the system from private and home education.
- ONE TIME EFFECT: 2012-13 enrollment is affected by graduation of unusually small 2011-12 grade twelve cohort due to past policy changes.





# 2011-12 FTE Change

Oct. 10, 2011 Conference

<b>2011-12 Revised Estimate</b>	<b>2,661,616.65</b>		
<b>Change from 2011-12 Appropriated</b>	<b>6,862.71</b>		
<b>Demographic Changes</b>		(1,798.49)	<b>Kindergarten</b>
		4,118.99	<b>Grades 1-5</b>
		1,786.63	<b>Grades 6-8</b>
		2,755.58	<b>Grades 9-12</b>

Demographic changes are net changes that include not only students entering the school system or graduating, but also students moving in or out of the state, students moving to and from private and home school, students leaving education before graduating, and promotion patterns.

# 2012-13 FTE Growth

Oct. 10, 2011 Conference

<b>Growth from 2011-12 Revised Estimate</b>	<b>30,566.50</b>		
<b>Demographic Growth</b>	<b>23,066.24</b>	<b>9,653.95</b>	Higher cohorts entering Kindergarten and Grade 1 (11,818.04) based on higher actual births from Sep 2005 through Aug 2007 and lower percentage share of ages 5 and age 6 year olds in public schools (-2,164.09)
		<b>13,412.29</b>	Net change in all other grades; includes students entering from home education and private schools, fewer leaving in high school
<b>Effect of Non-Promotion Policy from 2003 legislation</b>	<b>2,542.00</b>	Estimate of final effect of the policy change; this will not be a significant factor in future estimates. Estimate based on the tracking of students retained in grade 3 after the 2002-03 school year and the non-promotion patterns before and after the policy implementation.	
<b>FLVS Base Growth</b>	<b>1,907.26</b>	Does not include the 2011 legislative impact See below.	
<b>2011 Legislative Impact*</b>	<b>3,051.00</b>	<b>1,899.00</b>	KG and Grade 1 virtual education change pulling from home education and private schools
		<b>1,137.00</b>	High Performing Charter Schools pulling from home education and private schools
		<b>15.00</b>	Virtual charter school

# Effect on 2012-13 Enrollment of the Non-Promotion Policy Implemented in 2002-2003

**27,713** students were retained in grade 3 at the end of the 2002-03 school year.

- In that year, some the students would have been retained without the change in the non-promotion policy.
- In addition, some of them would have been retained later in grades 4-11 if they had not been retained in 2002-03.
- By the 2011-12 school year:
  - Some of the students left Florida public schools to move out-of-state or go to private or home education;
  - Some of the students left education before graduation;
  - Some of the students were retained at least one other year;
  - Some of the students caught up with their age cohort.

The effect of the 2002-2003 non-promotion policy on 2012-13 enrollment is the group of students who were retained and would have been expected to graduate in 2011-12 if the policy had not been implemented. These students will now graduate in 2012-13. The estimate of this group of students is **2,542**.

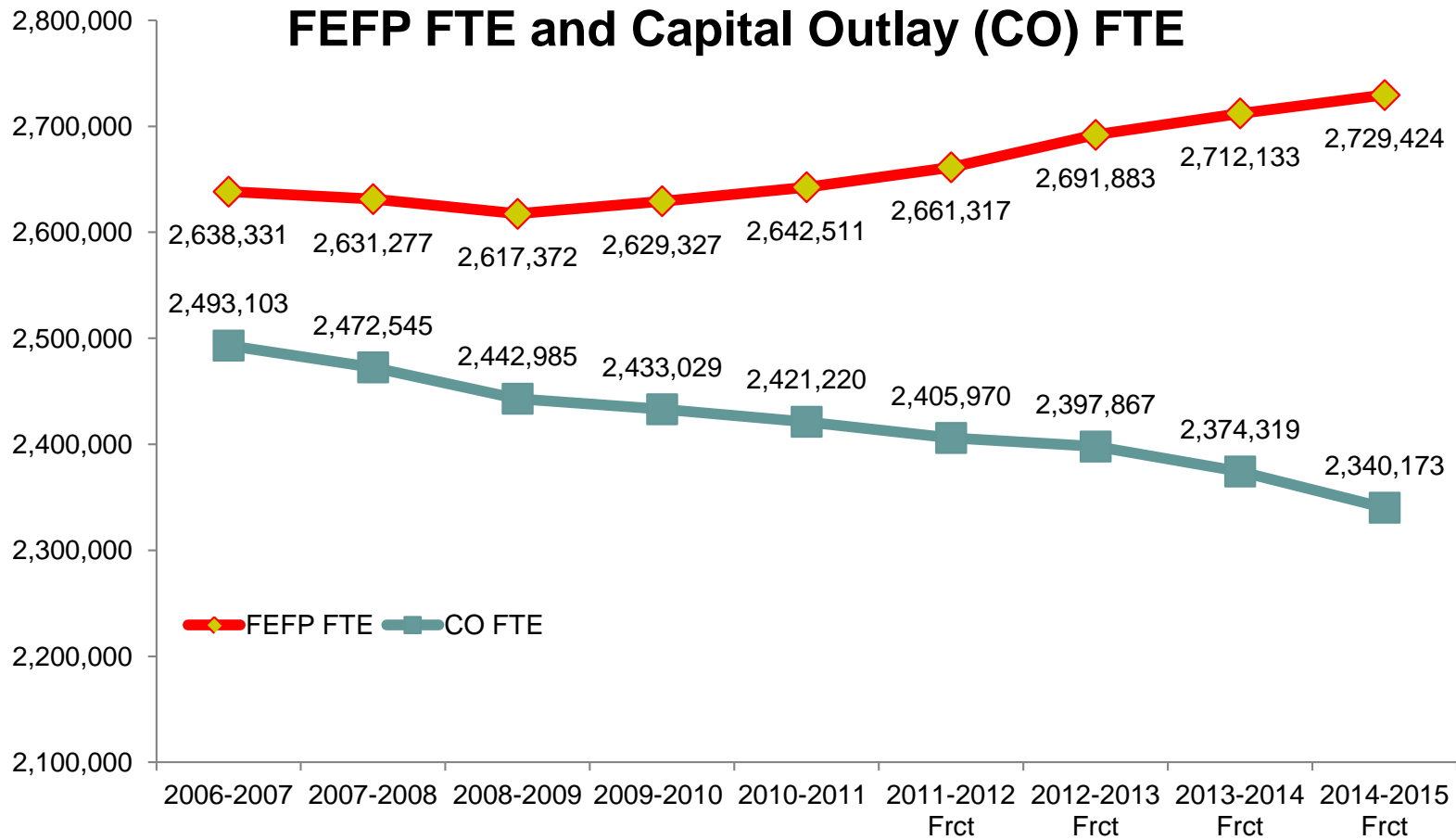
# Grade Three Students Not Promoted to Grade Four ---Point in Time Counts---

Year	Number of Students Retained
2001-2002	6,435
2002-2003	27,713
2003-2004	23,348
2004-2005	20,121
2005-2006	14,151
2006-2007	16,676
2007-2008	13,666
2008-2009	13,340
2009-2010	12,223

Source: <http://www.fldoe.org/eias/eiaspubs/default.asp>



# Growing Difference Between FEFP FTE and CO FTE



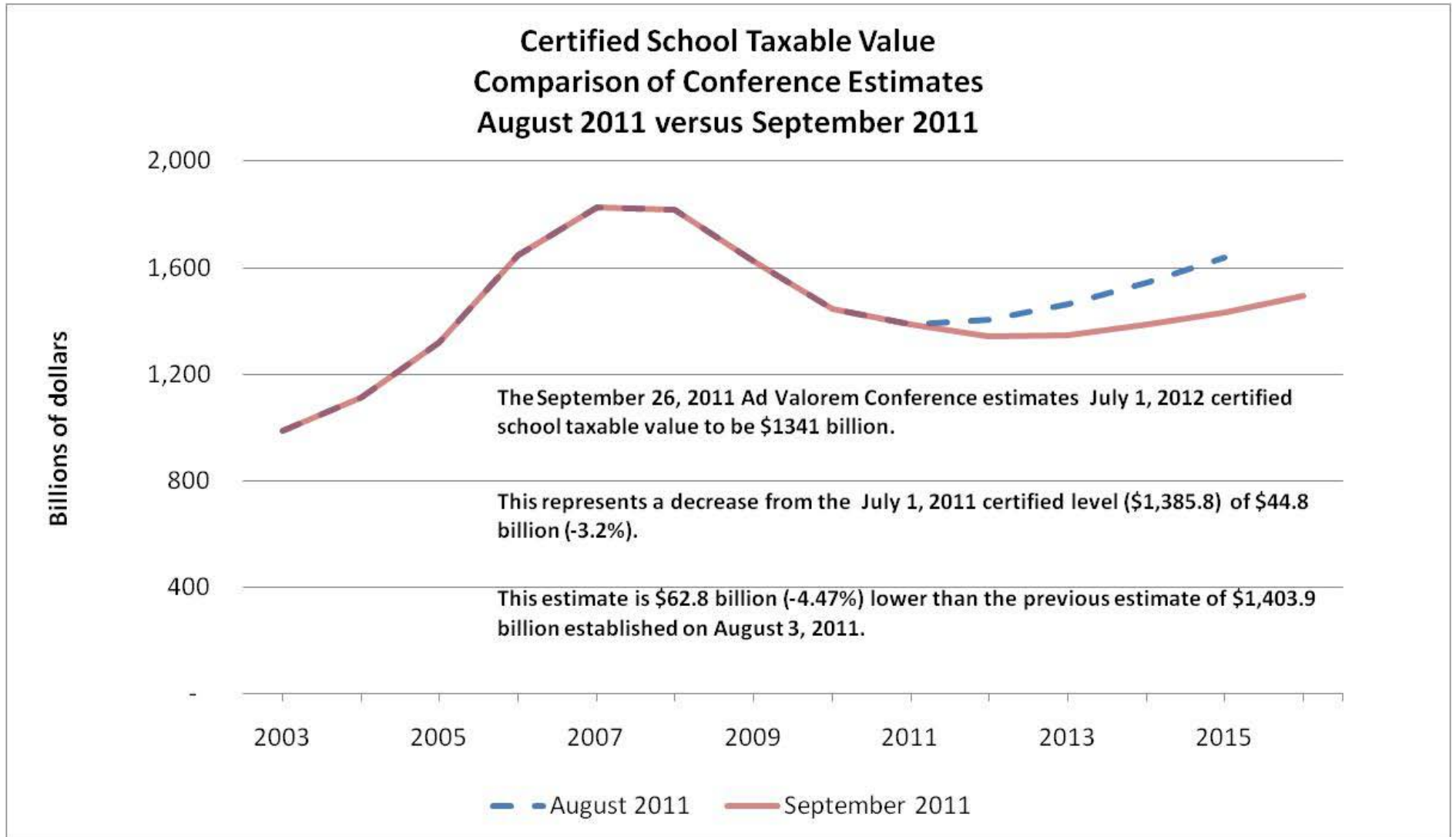
Forecasts for CO FTE are the June 28, 2011 Conference Forecasts  
 Forecasts for FEFP FTE are the October 10, 2011 Conference Forecasts

# Voluntary Prekindergarten Enrollment & Full-Time Equivalent (FTE) Enrollment

Year	Program Year Enrollment	Fiscal Year FTE Enrollment	Program Participation Rate
2007-2008	134,717	118,960.41	
2008-2009	147,752	132,891.23	
2009-2010	156,826	142,434.99	
2010-2011	165,341	150,326.49	76.2%
2011-2012	171,663	155,509.41	78.7%
2012-2013	175,626	159,101.55	80.0%
2013-2014	177,377	160,691.27	80.0%
2014-2015	179,705	162,803.00	80.0%

Results of the September 28, 2011 Voluntary Prekindergarten Estimating Conference

# Ad Valorem Forecast Downshifted



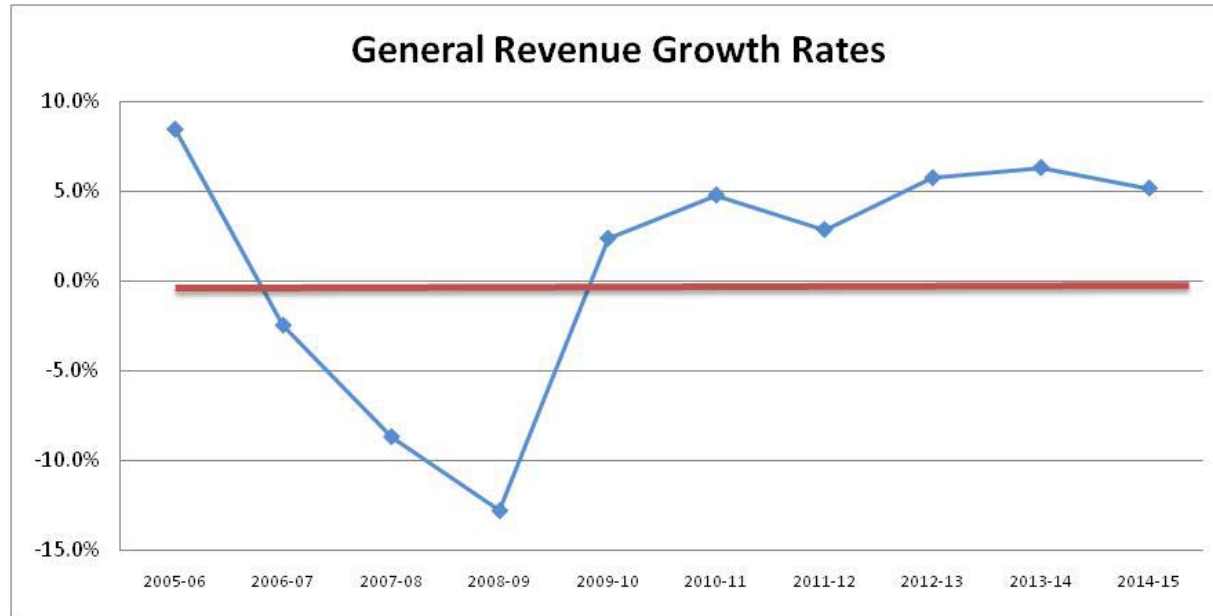
Original projection of 1.3% growth for 2012; now -3.23% decline

# PECO Revised

- **March Forecast-** The Revenue Estimating Conference reduced the forecast of the maximum amount available for appropriation from the PECO Trust Fund for FY 2011-12 by 236.0 million, to \$120.3 million in total. The total amount available for appropriation was from cash, as the Gross Receipts Tax forecast was reduced to a level which did not provide sufficient capacity to issue new bonds in FY 2011-12. Among other things, the forecast recognized the impact of a large pending gross receipts tax refund request in the amount of \$26.15 million.
- **2011 Session Action-** Legislation became law which provided for the exclusion of the refund request from the bonding calculation. This action, in combination with project vetoes in the amount of \$129.6 million from the 2011 General Appropriations Act, resulted in moving bonding capacity from FY 2013-14 and FY 2011-12 into FY 2012-13. The estimated maximum available for appropriation for FY 2012-13 is \$380.8 million, or \$157.9 million more than the March 2011 forecast.
- **October Conference-** The Revenue Estimating Conference reduced the forecast of the maximum amount available for appropriation from the PECO Trust Fund for FY 2012-13 by \$267.6 million, to \$113.2 million in total. The total amount available for appropriation is from cash, as the new Gross Receipts Tax forecast is reduced to a level which does not provide sufficient bonding capacity to issue any new bonds in FY 2012-13.



# General Revenue Forecast Dropped



Fiscal Year	July* Forecast	October Forecast	Difference (Oct - July)	Incremental Growth	Growth
2005-06	27074.8				8.4%
2006-07	26404.1				-2.5%
2007-08	24112.1				-8.7%
2008-09	21025.6				-12.8%
2009-10	21523.1				2.4%
2010-11	22551.6	22551.6	0.0	1028.5	4.8%
2011-12	23795.1	23195.5	(599.6)	643.9	2.9%
2012-13	25495.1	24526.8	(968.3)	1331.3	5.7%
2013-14	27063.6	26071.8	(991.8)	1545.0	6.3%
2014-15	28340.9	27417.9	(923.0)	1346.1	5.2%



## **SCPS RANKS IN THE TOP TIER IN STUDENT PERFORMANCE AND BUSINESS EFFICIENCY BY STATE, NATIONAL, AND BUSINESS METRICS**

- SCPS is an “Academically HIGH Performing” **A** rated School District.
- **SCPS is ranked #1 in the State in the percentage of its budget spent in the classroom (source: Florida D.O.E. program cost report).**
- **SCPS was ranked #1 in the State in a “Return on Educational Investment” (ROEI) in a national study conducted by the Center for Education Progress.**
- District administration for SCPS is .57% of all full time staff. The State average district administration to full time staff is .91% (source: Florida D.O.E. student/staff report).
- 96% of the SCPS budget is spent at the school level (source: Florida D.O.E. program cost report).
- Since 2006-2007, the student membership has dropped by 2.7%. Over this same period of time, the full time staff was reduced by 5.3%. (source: Florida D.O.E. student/staff report).
- SCPS is ranked 60th lowest of the 67 Florida school districts in total education funding (source: Florida D.O.E funding report).
- Financial Ratings of AA by Standard & Poor’s and Fitch & Aa-2 by Moody’s.
- SCPS currently has the 61st lowest percentage of vacant student capacity of all 67 Florida school districts.
- SCPS SAT scores are 43 points above the national average and 79 points above the state average.

## Seminole County Public Schools Summary of School Grades (2007-2011)

Elementary Schools	2007	2008	2009	2010	2011
Altamonte	A	A	A	A	A
Bear Lake	A	A	A	A	A
Bentley	B	A	A	B	A
Carillon	A	A	A	A	A
Casselberry	A	A	A	B	C
Crystal Lake	A	A	A	A	A
Eastbrook	A	A	A	A	A
English Estates	B	A	B	B	C
Evans	A	A	A	A	A
Forest City	A	A	A	B	A
Geneva	A	A	A	A	A
Goldsboro	A	A	A	A	A
Hamilton	C	C	B	C	C
Heathrow	A	A	A	A	A
Highlands	A	A	A	A	A
Idyllwild	A	A	A	B	A
Keeth	A	A	A	A	A
Lake Mary	A	B	A	B	A
Lake Orienta	B	B	A	A	A
Lawton	A	A	A	A	A
Lay	A	A	A	B	B
Longwood	A	A	A	A	A
Midway	B	C	C	B	C
Partin	A	A	A	A	A
Pine Crest	B	C	A	B	B
Rainbow	A	A	A	A	A
Red Bug	A	B	A	A	A
Sabal Point	A	A	A	A	A
Spring Lake	A	B	A	A	A
Stenstrom	A	A	A	A	A
Sterling Park	A	A	A	A	A
Walker	A	A	A	A	A
Wekiva	A	A	A	A	A
Wicklow	A	A	A	A	B
Wilson	A	A	A	A	A
Winter Springs	B	C	A	A	A
Woodlands	A	A	A	A	A

Middle Schools	2007	2008	2009	2010	2011
Chiles	A	A	A	A	A
Greenwood Lakes	A	A	A	A	A
Indian Trails	A	A	A	A	A
Jackson Heights	A	A	A	A	A
Markham Woods	A	A	A	A	A
Millennium	B	A	A	A	A
Milwee	A	A	A	A	B
Rock Lake	A	A	A	A	A
Sanford	A	A	A	A	A
South Seminole	A	A	A	A	A
Teague	A	A	A	A	A
Tuskawilla	A	A	A	A	A

High Schools	2007	2008	2009	2010	2011
Crooms	A	A	A	B	P*
Hagerty	B	A	B	B	P
Lake Brantley	B	A	B	A	P
Lake Howell	B	A	B	A	P
Lake Mary	B	B	B	A	P
Lyman	B	B	B	B	P
Oviedo	A	A	B	A	P
Seminole	C	A	C	B	P
Winter Springs	B	B	C	A	P

Seminole County District Grade	2007	2008	2009	2010	2011
Seminole County	A	A	A	A	A

Charter/Alternative Schools	2007	2008	2009	2010	2011
Choices in Learning	B	A	A	A	A
Journeys Academy	NA	NA	NA	NA	NA

\*P=Grade Pending: awaiting the rest of the high school grading criteria

### Summary Data

	Elementary Schools									
	Number					Percent				
	2007	2008	2009	2010	2011	2007	2008	2009	2010	2011
A	30	29	34	27	30	81	78	92	73	81
B	6	4	2	9	3	16	11	5	24	8
C	1	4	1	1	4	3	11	3	3	11
D	0	0	0	0	0	0	0	0	0	0
F	0	0	0	0	0	0	0	0	0	0

	Middle Schools									
	Number					Percent				
	2007	2008	2009	2010	2011	2007	2008	2009	2010	2011
A	11	12	12	12	11	92	100	100	100	92
B	1	0	0	0	1	8	0	0	0	8
C	0	0	0	0	0	0	0	0	0	0
D	0	0	0	0	0	0	0	0	0	0
F	0	0	0	0	0	0	0	0	0	0

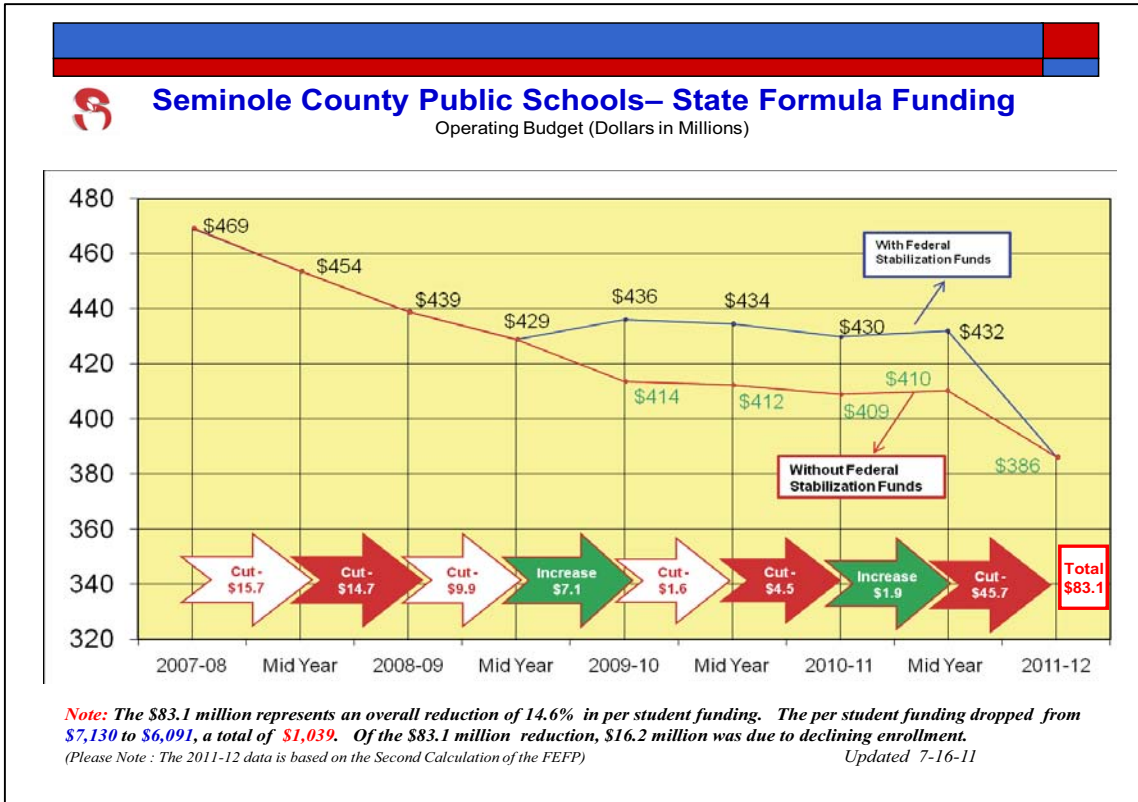
	High Schools									
	Number					Percent				
	2007	2008	2009	2010	2011	2007	2008	2009	2010	2011
A	2	6	1	5		22	67	11	56	
B	6	3	6	4		67	33	67	44	
C	1	0	2	0		11	0	22	0	
D	0	0	0	0		0	0	0	0	
F	0	0	0	0		0	0	0	0	

	Seminole County									
	Number					Percent				
	2007	2008	2009	2010	2011	2007	2008	2009	2010	2011
A	43	47	47	44		74	81	81	76	
B	13	7	8	13		22	12	14	22	
C	2	4	3	1		4	7	5	2	
D	0	0	0	0		0	0	0	0	
F	0	0	0	0		0	0	0	0	

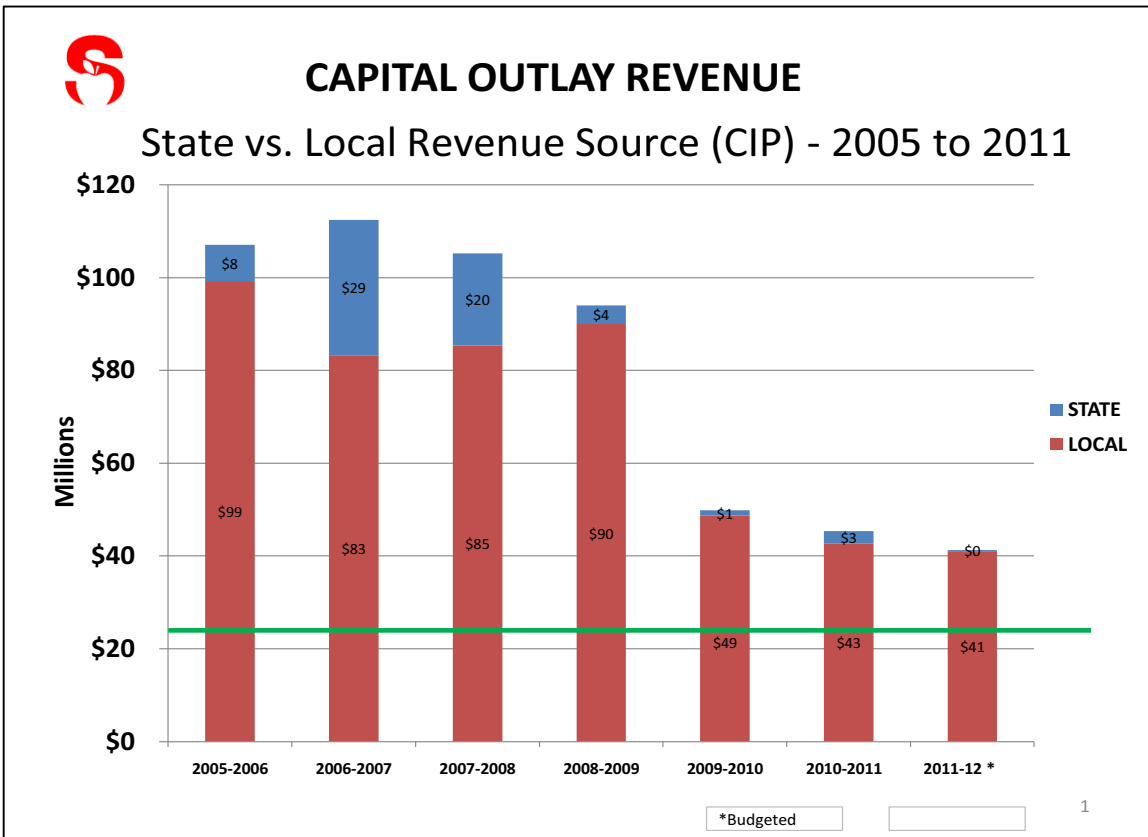
Charter/Alternative school data are not included in district summary

\*\* Percents may not equal 100 because of rounding.

# Seminole's Budget Challenges



- Since 2007-08 SCPS has lost \$83.1 million in funding or \$1,039 in per pupil funding.
- As a result, SCPS has reduced its workforce by 700 positions. (8.5% Reduction).
- District office staff was reduced by 19.9%.
- SCPS was ranked 60th lowest of the 67 Florida school districts in education funding.
- SCPS was ranked #1 in the State in the percent of it's budget spent in the classroom.



- Since 2006-07 SCPS has lost \$71.5 million in capital outlay funding. ( A 64% Reduction)



# Estimated Deficit 2012-2013

## K-12 State-wide Deficit Estimate

### K-12 Projected Deficit

- **Lost Federal Jobs Bill Funding** **\$554 M**
- **Non-Recurring Funding in FEFP** **\$224 M**
- **Student Increase (31,087)** **\$195 M**
- **RLE Shortfall** **\$239 M**

## Total Estimated State-Wide Deficit

**\$1.2 B**

## SCPS Deficit Estimate

- **Net SCPS Recurring Deficit** **(\$19,840,183)**

(Covered with \$13.3 M in Federal Jobs bill Funding, along with \$6.5M in other non-recurring funds)

## Estimated Revenue SCPS Reduction:

- **Non-Recurring Funding in FEFP** **(\$5,300,000)**
- **Student Increase** **(\$4,614,000)**
- **RLE Shortfall** **(\$5,655,000)**
- **Retirement Increase, 2.44% (SB 2100)** **(\$6,730,000)**

## Net Revised Estimated SCPS Deficit

**(\$42,139,183)**

## Seminole County Public Schools Funding Crisis

The State operating revenues were reduced by over \$83.1 million (17.7%)\* over the last four years. Among the actions taken over the last four years in order to balance the budget are the following:

- Eliminated 700 positions.....(\$29.7 M)\*\*
- Change from six period to seven period day at high schools (\$8.0 M)
- Employee medical and prescription design changes.....(\$7.4 M)
- Computer bid.....(\$5.5 M)
- Reduction in leased portables.....(\$5.5 M)
- Electric and water conservation.....(\$1.8 M)
- Alternative school, in-source.....(\$5.5M)
- Grounds maintenance, out-source.....(\$6.6 M)
- Custodial services bid.....(\$3.3 M)
- Suspend operations of an elementary school.....(\$1.0 M)
- Closed an alternative school.....(\$1.1 M)
- Summer school reductions.....(\$1.5 M)
- School supplies reduction.....(\$2.2 M)
- Consolidated magnet bus stops.....(\$2.2 M)

\*SCPS is ranked 60th lowest of the 67 Florida school districts in education funding. SCPS is ranked 1st (highest) in the State in the percentage of its budget spent in the classroom.

\*\*73% of SCPS employees reside in Seminole County. The percentages of staffing reductions made over the last four years are as follows:

- Overall position reductions, 8.5%
- School based teacher reductions, 5.4%
- District level administrators, 8.5%
- District office staff, 19.9%

### Seminole County Public Schools - Millage Rate History

Fiscal Year	By State Law	Local Board	Debt Service	Total Millage Rate
2002-03	5.786	2.693	0.521	9.000
2003-04	5.564	2.677	0.495	8.736
2004-05	5.456	2.671	0.385	8.512
2005-06	5.205	2.760		7.965
2006-07	5.001	2.752		7.753
2007-08	4.698	2.715		7.413
2008-09	5.097	2.446		7.543
2009-10	5.277	2.446		7.723
2010-11	5.355	2.446		7.801
2011-12	5.474	2.248		7.722
<b>Millage Decrease Since 2002-03:</b>	<b>-0.312</b>	<b>-0.445</b>	<b>-0.521</b>	<b>-1.278</b>
<b>% Decrease Since 2002-03</b>	<b>-5.4%</b>	<b>-16.5%</b>	<b>-100.0%</b>	<b>-14.2%</b>

# CourtSmart Tag Report

**Room:** KN 412

**Case:**

**Type:**

**Caption:** Senate Budget Subcommittee on Education Pre-K-12 Appropriations

**Judge:**

**Started:** 10/20/2011 10:50:11 AM

**Ends:** 10/20/2011 12:44:33 PM      **Length:** 01:54:23

**10:50:12 AM** Call to Order  
**10:50:44 AM** Roll Call  
**10:50:50 AM** Chair and Members Comments - Funding Needs for Public Schools  
**11:17:31 AM** Michael Kooi, Executive Director, Office of Independent Education and Parental Choice, DOE  
**11:46:39 AM** Juhan Mixon, President, Mixon and Associates  
**11:57:28 AM** Michael Lannon, Superintendent St. Lucie District Schools  
**12:19:54 PM** Amy Baker, Coordinator/Economist with the Office of Economic Demographic Research  
**12:37:19 PM** Dr. Anna Marie Cote, Deputy Superintendent, Seminole County School Board  
**12:37:41 PM** John Pavelchak, Executive Director of Finance and Budget, Seminole County School Board  
**12:44:03 PM** Chair comments  
**12:44:08 PM** Meeting Adjourned





## THE FLORIDA SENATE

Tallahassee, Florida 32399-1100

COMMITTEES:  
Governmental Oversight and Accountability, *Chair*  
Budget - Subcommittee on Education Pre-K - 12  
Appropriations  
Commerce and Tourism  
Community Affairs  
Health Regulation

SENATOR JEREMY RING  
32nd District

October 10, 2011

President Mike Haridopolos  
409 The Capitol  
404 S. Monroe Street  
Tallahassee, FL 32399-1100

*Approved*

Dear President Haridopolos,

I am requesting to be excused from all legislative business scheduled until November 15<sup>th</sup> due to my continued recuperation from my recent surgery.

Thank you in advance for considering this request to be excused from legislative business until the week of November 15<sup>th</sup>. Please do not hesitate to contact me if you have any questions.

Sincerely,

*Jeremy Ring*

Jeremy Ring  
Senator District 32

REPLY TO:

- 5790 Margate Boulevard, Margate, Florida 33063 (954) 917-1392
- 210 Senate Office Building, 404 South Monroe Street, Tallahassee, Florida 32399-1100 (850) 487-5094

Senate's Website: [www.flsenate.gov](http://www.flsenate.gov)

MIKE HARIDOPOLOS  
President of the Senate

MICHAEL S. "MIKE" BENNETT  
President Pro Tempore



**THE FLORIDA SENATE**

Tallahassee, Florida 32399-1100

COMMITTEES:  
Judiciary, Chair  
Budget  
Budget - Subcommittee on Education Pre-K - 12  
Appropriations  
Commerce and Tourism  
Communications, Energy, and Public Utilities  
Governmental Oversight and Accountability  
Reapportionment  
Rules

**SENATOR ANITERE FLORES**

Majority Whip  
38th District

September 1, 2011

The Honorable David Simmons  
Chair of Committee on Education Pre-K - 12  
201 The Capitol  
404 South Monroe Street  
Tallahassee, FL 32399-1100

Dear Chairman Simmons:

I respectfully request to be excused from the Committee on Education Pre-k - 12 during the months of September, October and November. I have been informed by my doctor that I should refrain from travel until after I have given birth which is expected to be at the end of October.

Please do not hesitate to contact me should you have any questions.

Sincerely,

Anitere Flores

CC: Mr. Kurt Hamon, Staff Director, Committee on Education Pre-k - 12

SENATE APPROPRIATIONS  
11 SEP -6 AM 9:21  
STAFF DIR. STAFF

REPLY TO:

- 10691 North Kendall Drive, Suite 309, Miami, Florida 33176 (305) 270-6550
- 316 Senate Office Building, 404 South Monroe Street, Tallahassee, Florida 32399-1100 (850) 487-5130

Senate's Website: [www.flsenate.gov](http://www.flsenate.gov)

MIKE HARIDOPOLOS  
President of the Senate

MICHAEL S. "MIKE" BENNETT  
President Pro Tempore

Tab 1

1

# COMMITTEE APPEARANCE RECORD

(Submit to Committee Chair or Administrative Assistant)

10/20/11  
Date

Bill Number

Barcode

Name Mike Kooi

Phone 245 9631

Address 325 W. Gaines St.

E-mail mike.kooi@fldoe.org

Tallahassee FL 32399  
City State Zip

Job Title Director Office  
of Independent Education & Parental Choices

Speaking:  For  Against  Information

Appearing at request of Chair

Subject Charter Schools

Representing FL Dept. of Education

Lobbyist registered with Legislature:  Yes  No

Pursuant to s. 11.061, Florida Statutes, state, state university, or community college employees are required to file the first copy of this form with the Committee, unless appearance has been requested by the Chair as a witness or for informational purposes.  
If designated employee: Time: from \_\_\_\_\_ .m. to \_\_\_\_\_ .m.

S-001 (04/14/10)

Tab 2

2

# COMMITTEE APPEARANCE RECORD

(Submit to Committee Chair or Administrative Assistant)

10/20/11  
Date

Bill Number

Barcode

Name M. Juhan Mixon

Phone 222 2591

Address 110 E PARK AVE

E-mail Juhan@mixonandassociates.com

Tall FL 32308  
City State Zip

Job Title Consultant

Speaking:  For  Against  Information

Appearing at request of Chair

Subject Flexibility

Representing FAASA Fla. Assoc of Sch Admin

Lobbyist registered with Legislature:  Yes  No

Pursuant to s. 11.061, Florida Statutes, state, state university, or community college employees are required to file the first copy of this form with the Committee, unless appearance has been requested by the Chair as a witness or for informational purposes.  
If designated employee: Time: from \_\_\_\_\_ .m. to \_\_\_\_\_ .m.

S-001 (04/14/10)

Tab 2

3

THE FLORIDA SENATE

COMMITTEE APPEARANCE RECORD

(Submit to Committee Chair or Administrative Assistant)

10/20/2011  
Date

Bill Number

Barcode

Name MICHAEL LAWROD  
Address 4310 N. Hwy 90A # 202  
Street Ft. Pierce FL 34949  
City State Zip

Phone

E-mail

Job Title

Speaking:  For  Against  Information  Information  
Appearing at request of Chair

Subject Educational (K-12) Flexibility

Representing FL Assoc. District Sch. Superintendents and  
St. Lucie District Sch.

Lobbyist registered with Legislature:  Yes  No

Pursuant to s. 11.061, Florida Statutes, state, state university, or community college employees are required to file the first copy of this form with the Committee, unless appearance has been requested by the Chair as a witness or for informational purposes.  
If designated employee: Time: from \_\_\_\_\_ .m. to \_\_\_\_\_ .m.

S-001 (04/14/10)

Tab 3

4

THE FLORIDA SENATE

COMMITTEE APPEARANCE RECORD

(Submit to Committee Chair or Administrative Assistant)

10-20-2011  
Date

Bill Number

Barcode

Name Amy J. Baker  
Address Suite 574, Pepper Bldg  
Street Tallahassee FL 32399  
City State Zip

Phone 850-487-8272

E-mail baker.amy@leg.state.fl.us

Job Title Coordinator

Speaking:  For  Against  Information  Information  
Appearing at request of Chair

Subject Estimating Conference Results

Representing EDR, FL Legislature

Lobbyist registered with Legislature:  Yes  No

Pursuant to s. 11.061, Florida Statutes, state, state university, or community college employees are required to file the first copy of this form with the Committee, unless appearance has been requested by the Chair as a witness or for informational purposes.  
If designated employee: Time: from \_\_\_\_\_ .m. to \_\_\_\_\_ .m.

S-001 (04/14/10)

10/3

5

COMMITTEE APPEARANCE RECORD

(Submit to Committee Chair or Administrative Assistant)

10/20/11 Date

Bill Number

Barcode

Name Anna-Marie Cote
Address 280 Via Siena Lane / work: 400 E Lake Mary Blvd 32746
Lake Mary, FL / Sanford, FL 32773

Phone 407-323-0244
E-mail anna-marie-cote@scps.us
Job Title Deputy Superintendent

Speaking: [ ] For [ ] Against [x] Information
Subject School Finance Impacts
Representing Seminole County School Board
Lobbyist registered with Legislature: [ ] Yes [x] No

Appearing at request of Chair [x]

Pursuant to s. 11.061, Florida Statutes, state, state university, or community college employees are required to file the first copy of this form with the Committee, unless appearance has been requested by the Chair as a witness or for informational purposes.
If designated employee: Time: from \_\_\_\_\_ .m. to \_\_\_\_\_ .m.

S-001 (04/14/10)

did not speak

COMMITTEE APPEARANCE RECORD

(Submit to Committee Chair or Administrative Assistant)

10/20/11 Date

Bill Number

Barcode

Name Joy Frank
Address 208 S. Monroe
Allahassee FL 32301

Phone 577-5784
E-mail jfrank@adss.org
Job Title Board Council

Speaking: [ ] For [ ] Against [x] Information
Subject flexibility
Representing FL Assoc. of District School Superintendents
Lobbyist registered with Legislature: [x] Yes [ ] No

Appearing at request of Chair [ ]

Pursuant to s. 11.061, Florida Statutes, state, state university, or community college employees are required to file the first copy of this form with the Committee, unless appearance has been requested by the Chair as a witness or for informational purposes.
If designated employee: Time: from \_\_\_\_\_ .m. to \_\_\_\_\_ .m.

S-001 (04/14/10)

Tab 3 (6)

THE FLORIDA SENATE

COMMITTEE APPEARANCE RECORD

(Submit to Committee Chair or Administrative Assistant)

10/20/11

Date

Bill Number

Barcode

Name John G. Pavelchak
Address 116 West Woodland Drive
Semford FL 32773

Phone 407-227-3818
E-mail john-pavelchak@scps.k12.fl.us
Job Title Executive Director

Speaking: For Against Information Appearing at request of Chair

Subject School Finance

Representing Seminole County School Board

Lobbyist registered with Legislature: Yes No

Pursuant to s. 11.061, Florida Statutes, state, state university, or community college employees are required to file the first copy of this form with the Committee, unless appearance has been requested by the Chair as a witness or for informational purposes.
If designated employee: Time: from .m. to .m.

S-001 (04/14/10)

did not speak

THE FLORIDA SENATE

COMMITTEE APPEARANCE RECORD

(Submit to Committee Chair or Administrative Assistant)

10-20-11

Date

Bill Number

Barcode

Name Wendy Dodge
Address PO Box 391
Barrow FL 33831

Phone 863-838-3432
E-mail wendy.dodge@polk-fl.net
Job Title Legislative Chair

Speaking: For Against Information Appearing at request of Chair

Subject Flexibility

Representing FASA

Lobbyist registered with Legislature: Yes No

Pursuant to s. 11.061, Florida Statutes, state, state university, or community college employees are required to file the first copy of this form with the Committee, unless appearance has been requested by the Chair as a witness or for informational purposes.
If designated employee: Time: from .m. to .m.

S-001 (04/14/10)