

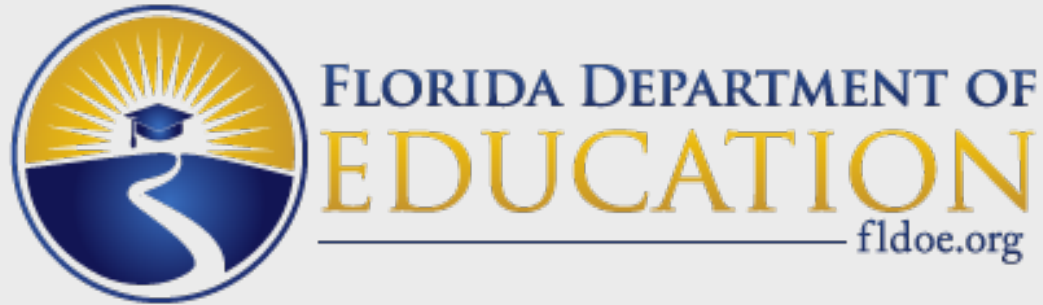
The Florida Senate
COMMITTEE MEETING EXPANDED AGENDA

APPROPRIATIONS
Senator Lee, Chair
Senator Benacquisto, Vice Chair

MEETING DATE: Thursday, March 5, 2015
TIME: 1:00 —3:00 p.m.
PLACE: *Pat Thomas Committee Room, 412 Knott Building*

MEMBERS: Senator Lee, Chair; Senator Benacquisto, Vice Chair; Senators Altman, Flores, Gaetz, Galvano, Garcia, Grimsley, Hays, Hukill, Joyner, Latvala, Margolis, Montford, Negron, Richter, Ring, Simmons, and Smith

TAB	BILL NO. and INTRODUCER	BILL DESCRIPTION and SENATE COMMITTEE ACTIONS	COMMITTEE ACTION
1	Workshop - Discussion and testimony only on the following (no vote to be taken):		
	Charter Schools		Discussed
Other Related Meeting Documents			



Florida Charter School Sector

March 5, 2015

Senate Appropriations Committee

Adam Miller, Executive Director,

Office of Independent Education and Parental Choice, Florida Department of Education

Agenda

- Overview
- Accountability and Performance
- Models
- Funding
- Panel

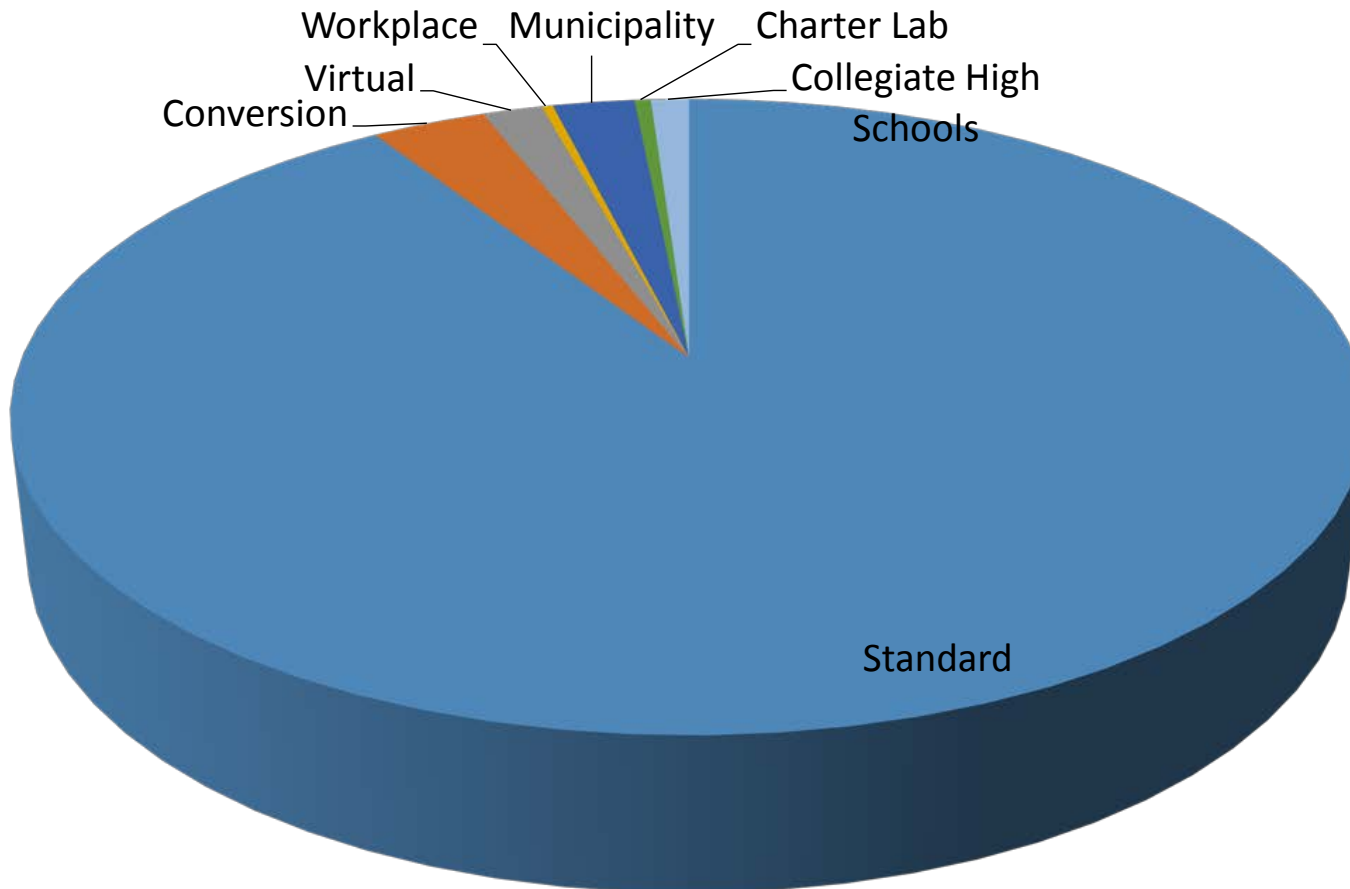
What is a Charter School?

- Public school of choice
- Governed by independent non-profit governing board
- Autonomy in exchange for increased accountability

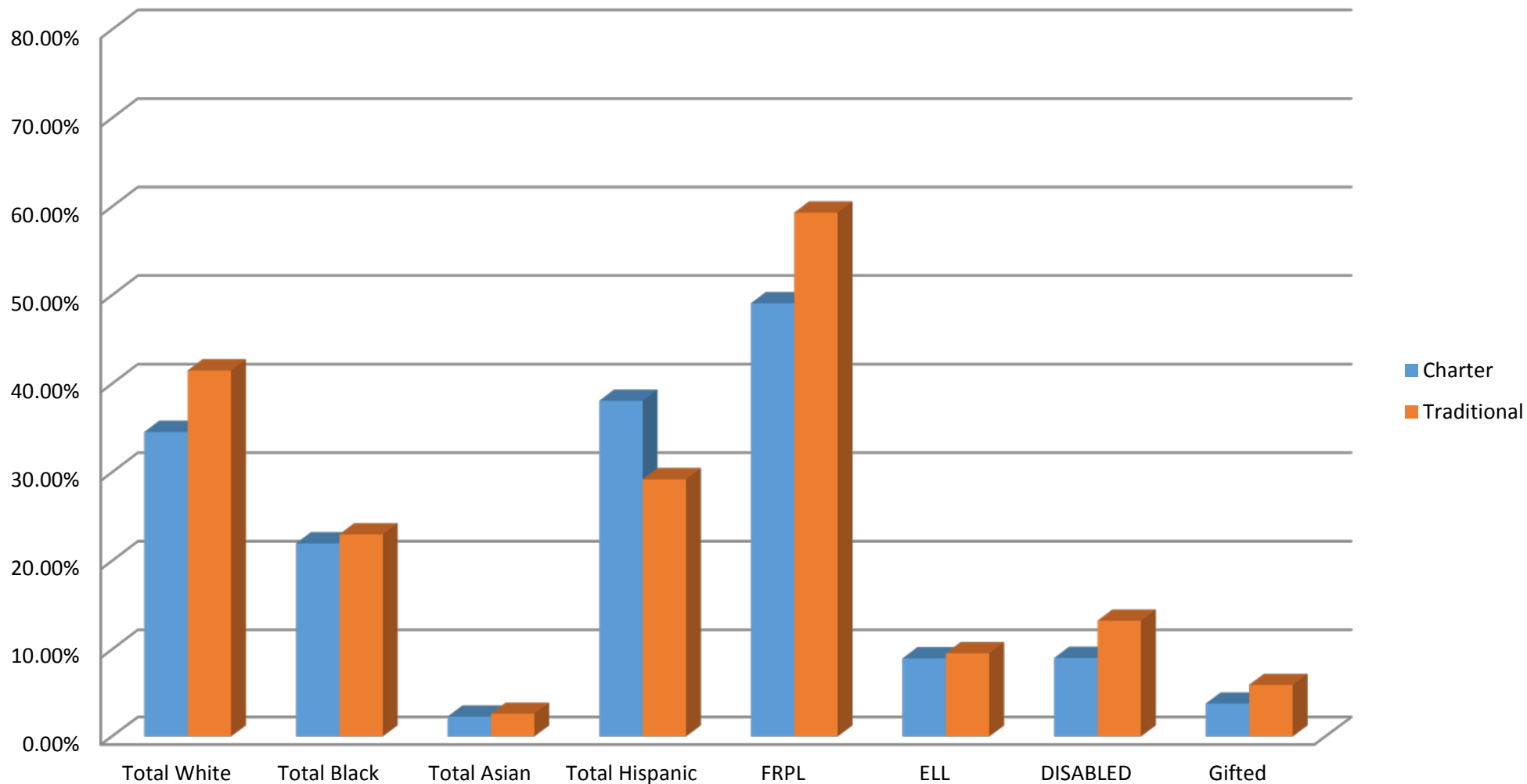
Types of Charter Schools

- Start-Up
 - Brick and mortar or Virtual
 - Standard, Municipality, Workplace, Collegiate High School
- Conversion
 - Parents and Teachers vote to convert traditional public school
 - Majorities needed for both votes
 - Application submitted to local school board after vote
- Developmental Research Laboratory Charters
 - Sponsored and operated by State University

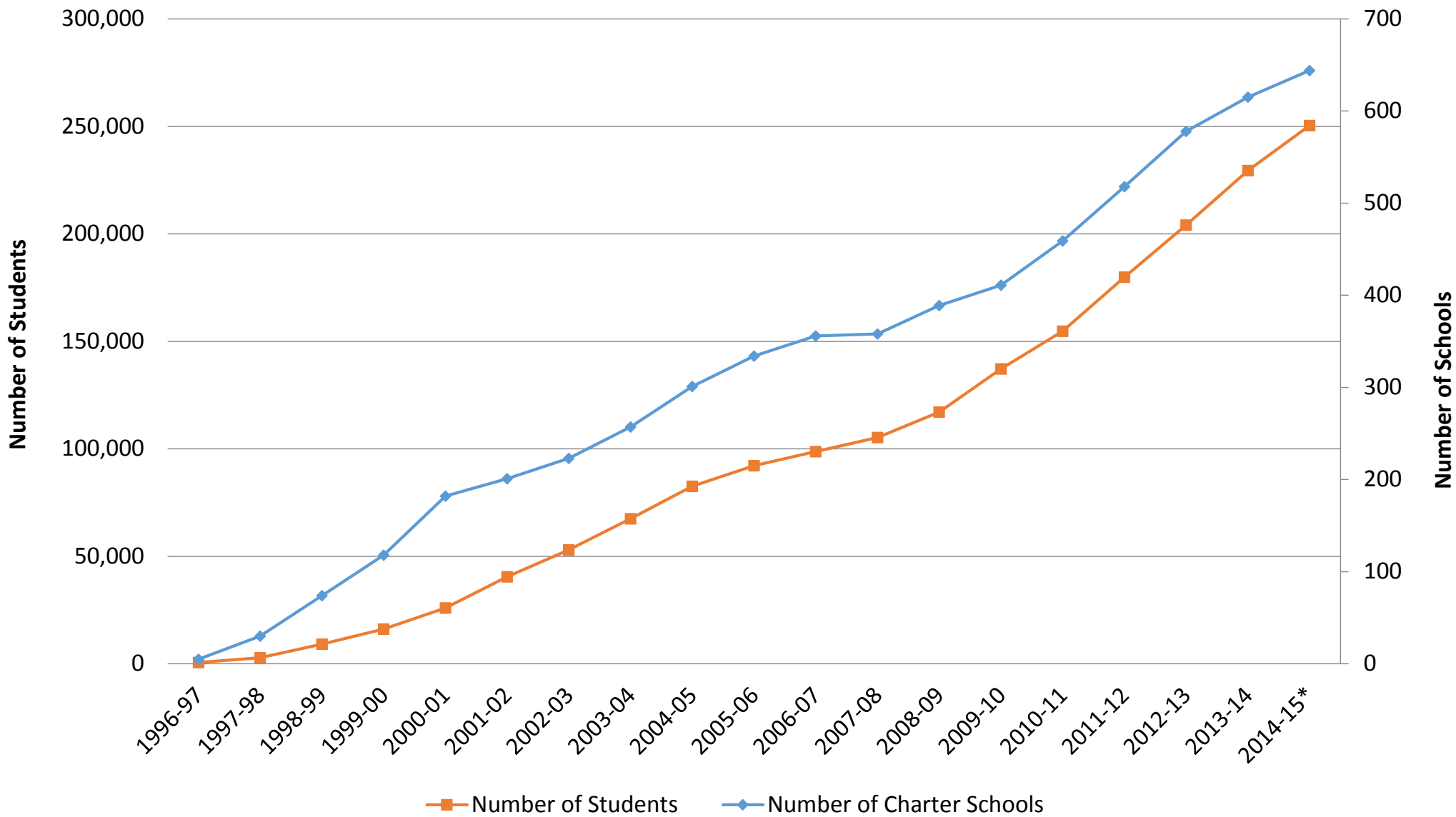
Types of Charter Schools



Demographic Comparisons 2013-14

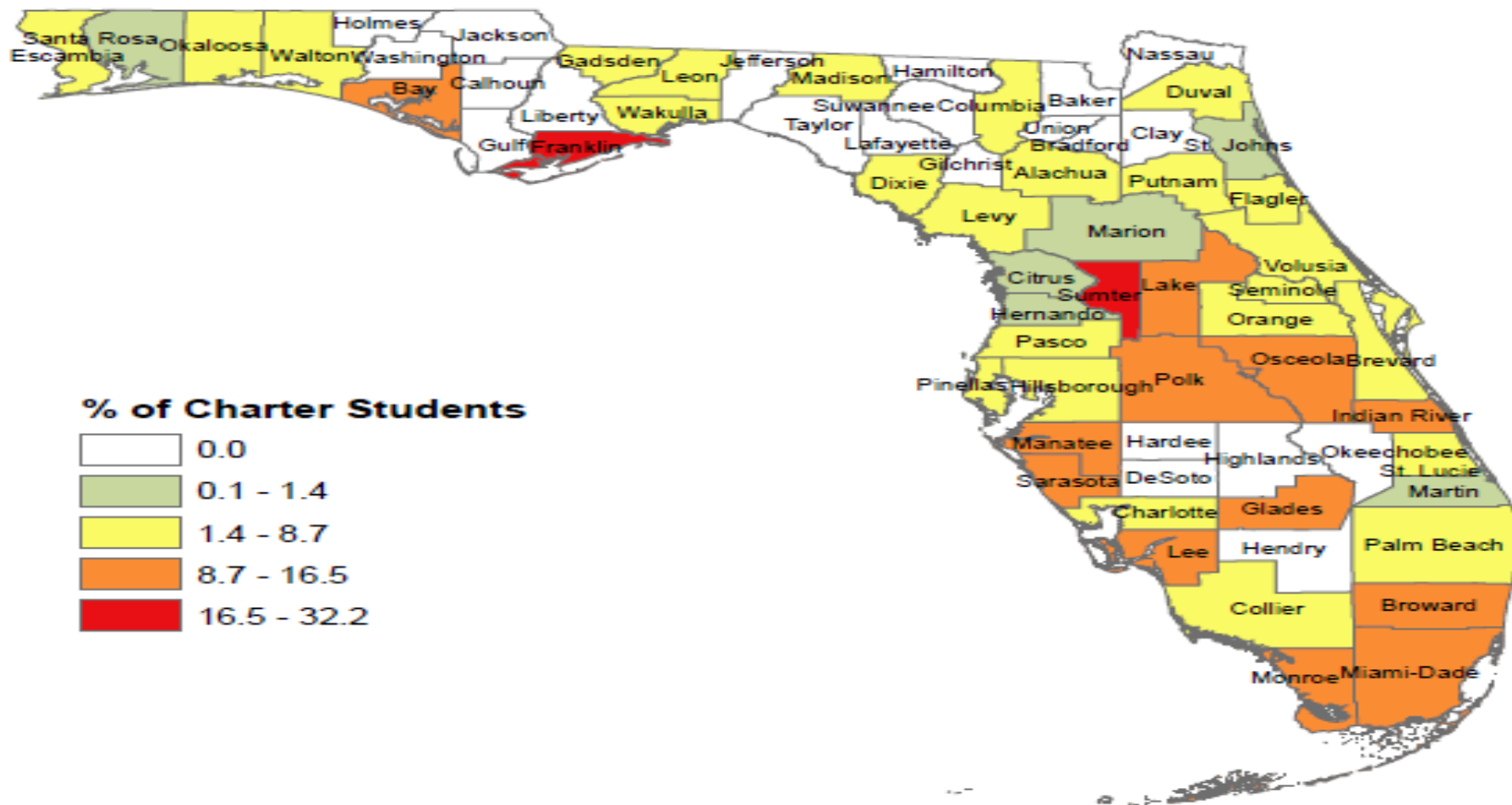


Historical Growth





2013-14 Charter School Students as a Percentage of Total Public School Membership by District



Charter School Autonomy

- Exempt from School Board policies
- Exempt from Education Code, with exceptions:
 - Florida Standards
 - State required assessments
 - School grades
 - Accountability
 - Graduation requirements
 - Services to students with disabilities
 - Civil rights
 - Teacher certification, evaluation, salary schedules
 - Public records and meetings
 - Class size (measured at school-wide average)

Charter School Process

Applications

Application Review
Applicant Interview
Due Diligence

Contract Negotiations

Academic Expectations
Renewal/Non Renewal
Terms
Financial Accountability

Monitoring and Oversight

Academic, Financial,
Operational Performance
Compliance
Renewal/Closure Decisions

Model Charter School Application

- Required for all applicants
- Developed in consultation with districts, operators, and national experts
- Districts may request additional information
- Revisions underway

Model Application

Educational Plan	Organizational Plan	Business Plan
Mission, Guiding Principles and Purpose (4)	Governance (8)	Facilities (5)
Target Population and Student Body (3)	Management (4)	Transportation Service (1)
Educational Program Design (5)	Education Service Providers (7)	Food Service (1)
Curriculum Plan (6)	Human Resources and Employment (2)	Budget (6)
Student Performance, Assessment and Evaluation (7)	Student Recruitment and Enrollment (5)	Financial Management and Oversight (5)
Exceptional Students (9)		Action Plan (1)
English Language Learners (3)		
School Climate and Discipline (2)		

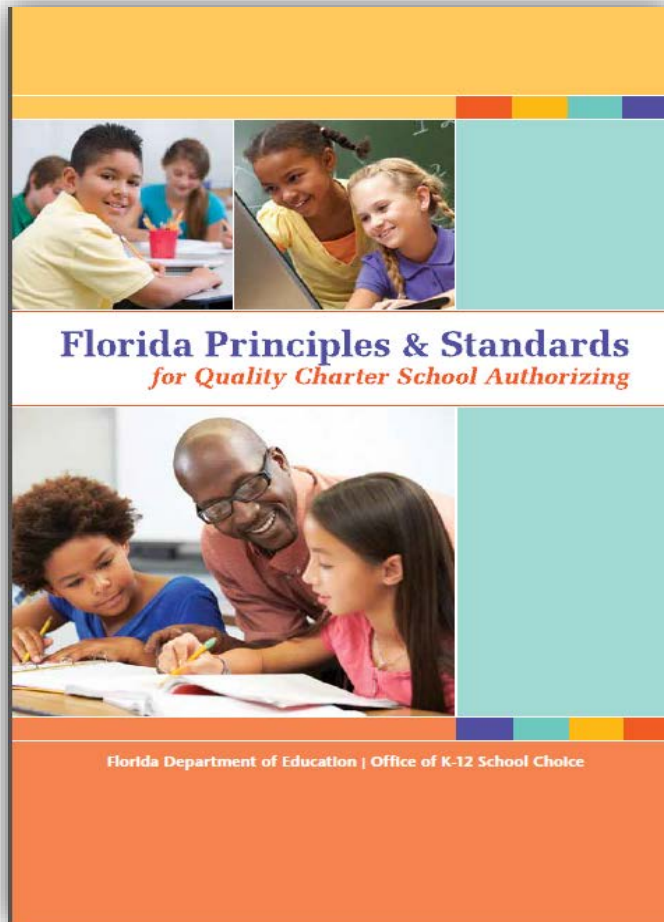
Model Application: Budget

- Provide an operating budget covering each year of the requested charter term that contains revenue projections, expenses and anticipated fund balances. The budget should be based on the projected student enrollment indicated on the cover page of the application.
- Provide a start-up budget that contains a balance sheet, revenue projections, including source of revenues, expenses, and anticipated fund balance. The start-up budget must cover any period prior to the beginning of FTE payments in which the school will expend funds on activities necessary for the successful start-up of the school.
- Provide a detailed narrative description of the revenue and expenditure assumptions on which the operating and start-up budget are based. The budget narrative should provide sufficient information to fully understand how budgetary figures were determined.
- Explain how the governing board will monitor the budget, including a strategy for addressing revenue shortfalls due to lower than expected enrollment.
- Provide monthly cash flow projections for the school's start-up period (i.e. from the date on which the application is approved to the beginning of the first fiscal year of operation) through the first year of operation.
- Describe the school's fundraising plan, if applicable. Report on the current status of any fundraising efforts, including verification of any fundraising monies reported in the school's start-up or operating budgets.

Application Review Process

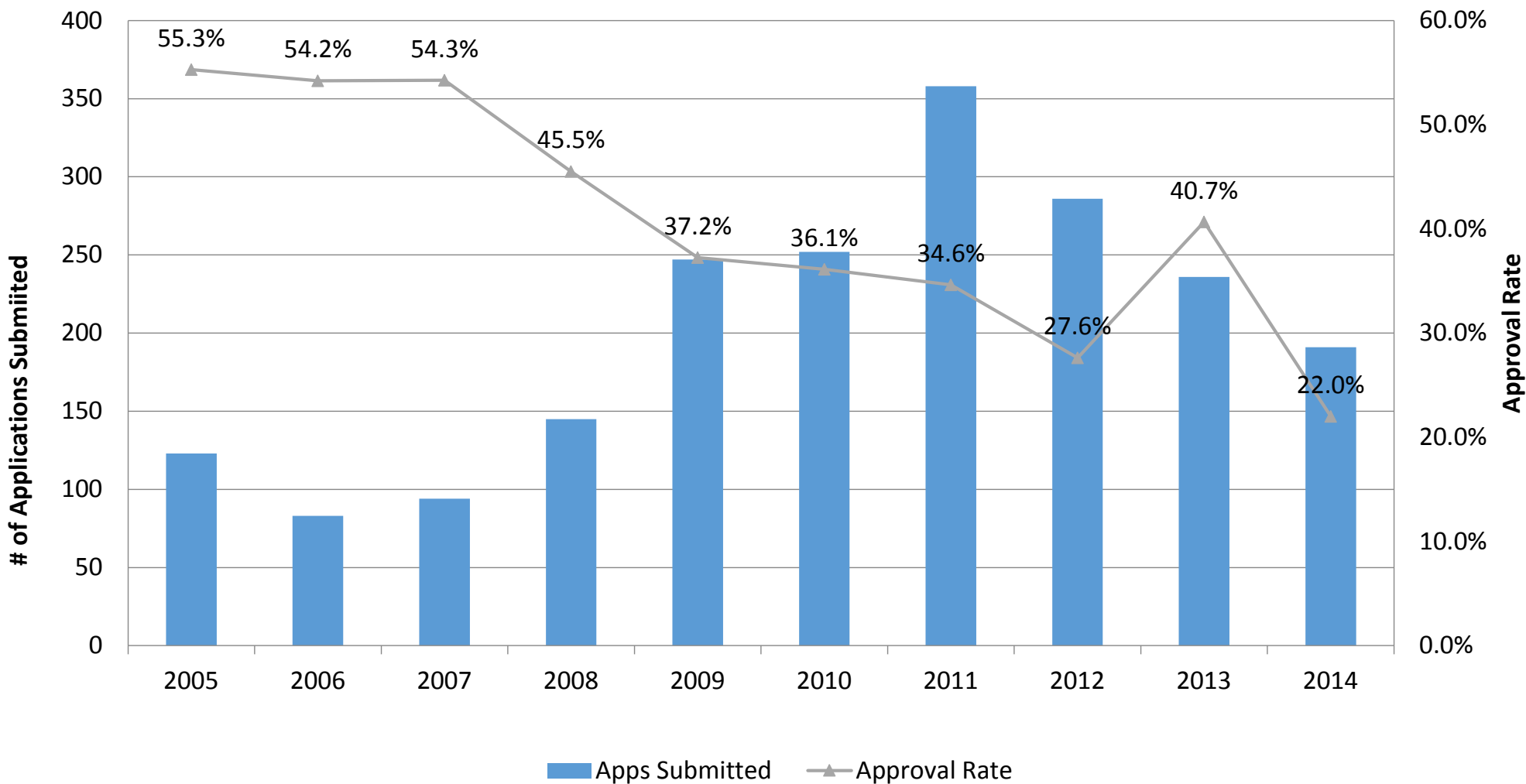
- Statutory language is broad
- Process varies by District
 - Whole team reviews, section reviews, interviews, etc.
- 60 days to approve or deny, unless extension is agreed upon

Florida Principles and Standards for Quality Charter School Authorizing



- Standard 2: Application Process and Decision Making
 - Exercise due diligence in reviewing applications
 - Grant charters only to applicants that have demonstrated competence and capacity to succeed in all aspects of school consistent with approval criteria
 - Rigorously evaluate each application through review of written application, substantive interview with the applicant group, and other due diligence to examine the applicant's experience and capacity

History of Applications and Approvals 2005-Present

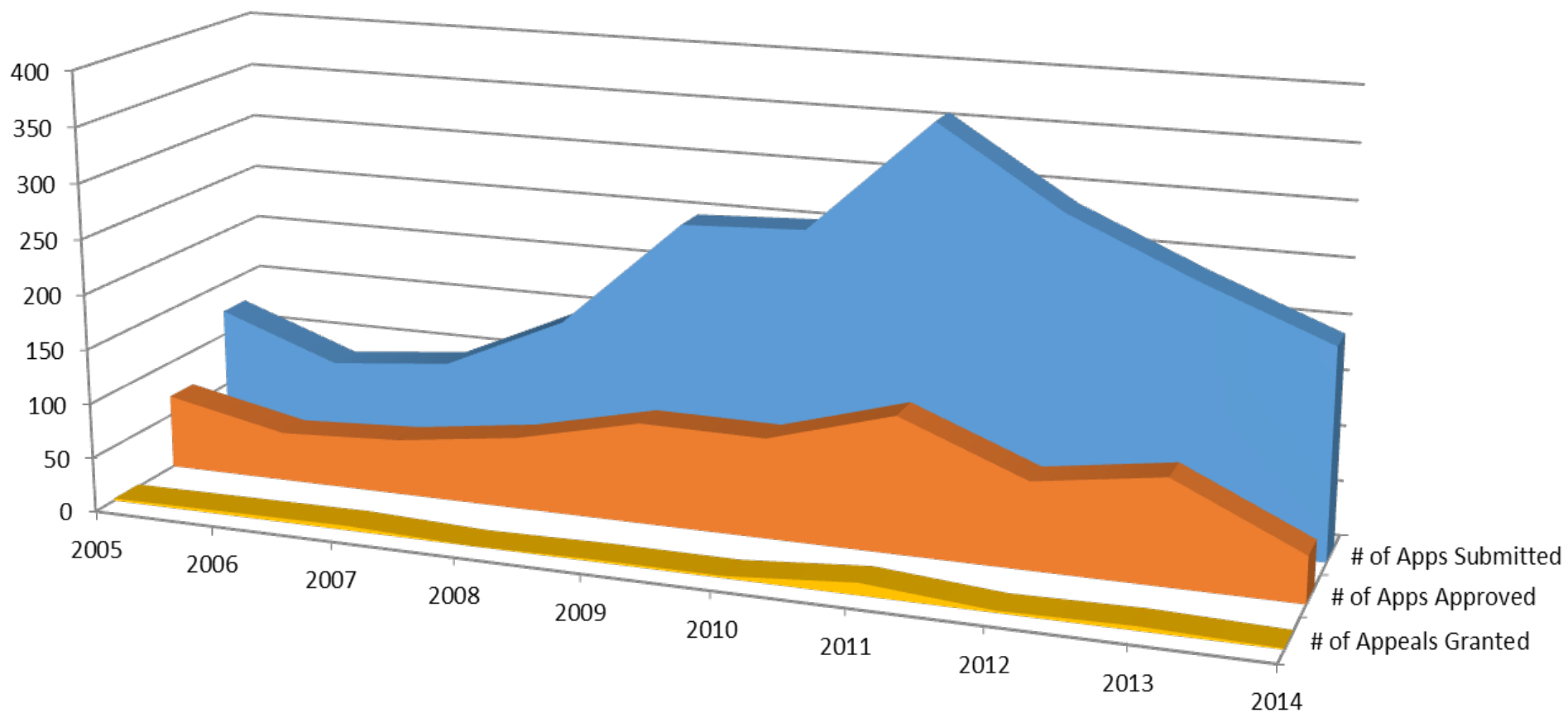


www.FLDOE.org

Appeals Process

- Applicants denied by School Board may appeal
- Charter School Appeal Commission (CSAC) convenes to hear case and issue recommendation to State Board of Education
 - Appeal Commission made up of 9 members
 - Four represent Districts
 - Four represent charter schools
 - Chaired by Commissioner's designee
- State Board of Education votes to accept or reject recommendation of CSAC and grants or denies appeal

2005-Present: Charter School Applications



Accountability and Performance

Applications

Application Review
Applicant Interview
Due Diligence

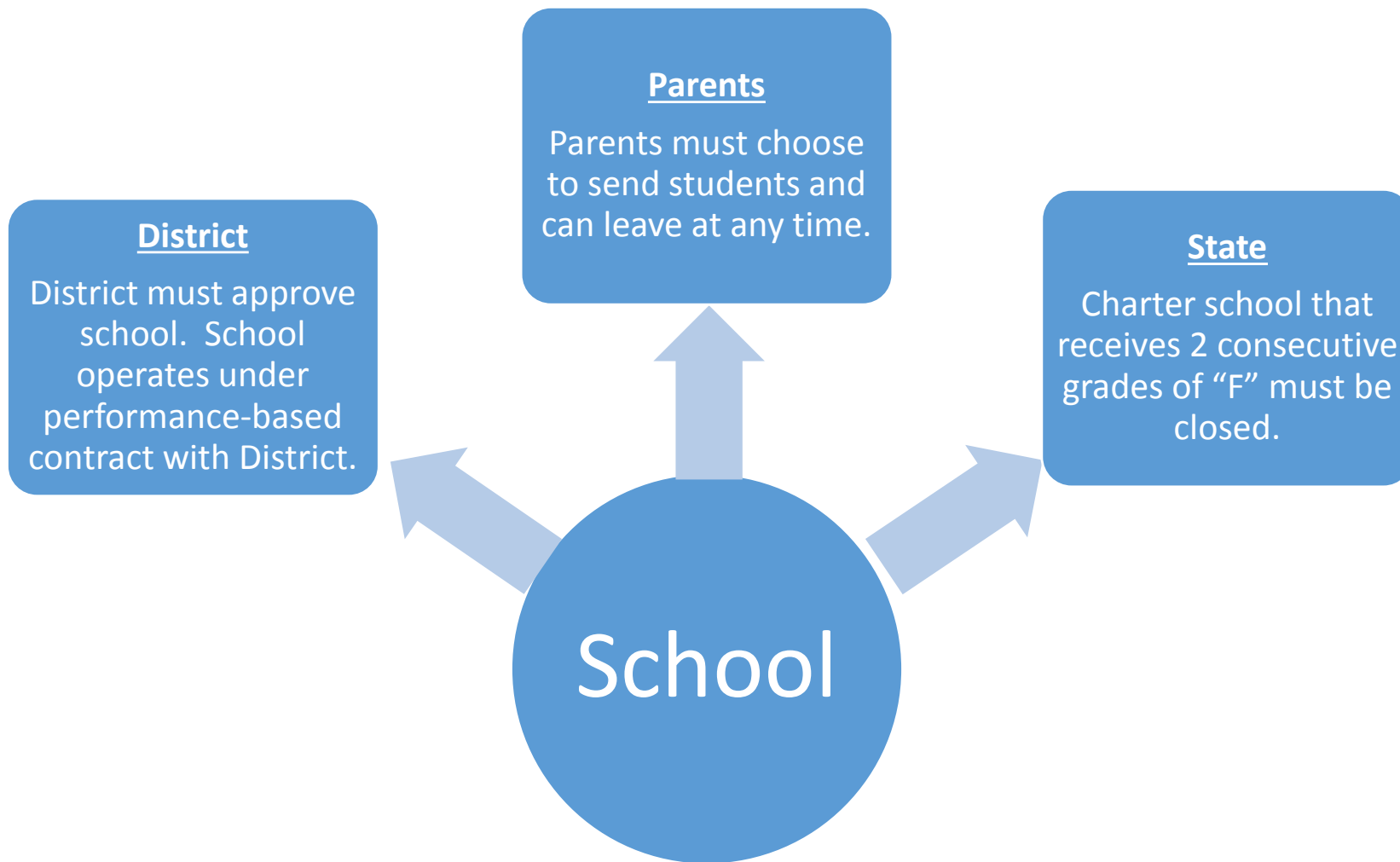
Contract Negotiations

Academic Expectations
Renewal/Non Renewal
Terms
Financial Accountability

Monitoring and Oversight

Academic, Financial,
Operational Performance
Compliance
Renewal/Closure Decisions

Multi-Layered Accountability



Statutory Accountability: Academic

- Default Closure
 - Consecutive grades of F
- Corrective Action
 - DDD, DDF, 2 grades of F in 3 years
 - Contract for educational services
 - Contract with outside entity
 - Reorganize under new Principal
 - Voluntarily close

Statutory Accountability: Academic

- Termination
 - Sponsor shall make academic achievement for all students the most important factor when determining whether to renew or terminate the charter
 - Sponsor may terminate charter if school fails to meet requirements for student performance stated in the charter contract

Statutory Accountability: Financial

- Sponsor shall monitor the revenues and expenditures of the charter school
- Charter school may be terminated for failure to meet generally accepted standards of fiscal management
- Charter school may be terminated if charter school has two consecutive audits with a financial emergency condition

Reporting Requirements in Law

- Monthly financial statement that contains balance sheet and statement of revenues, expenditures and changes in fund balance
- Annual audit
- Annual program cost report
- Annual progress report
 - Student achievement data
 - Financial status
 - Documentation of current facilities in use
 - Descriptive information about personnel, including salaries and benefits



Uniform Monthly Financial Statement

Governmental Accounting Standards Board (GASB) Monthly Financial Form
 (School Name) with MSID Number ()
 County, Florida
 Balance Sheet (Unaudited)
 (DATE)

	Accounts	General Fund	Special Revenue Fund	Debt Service	Capital Outlay	Total Governmental Funds
ASSETS						
Cash and cash equivalents	1110	\$ -	\$ -	\$ -	\$ -	\$ -
Investments	1160					-
Grant receivables	1130					-
Other current assets	12XX					-
Deposits	1210					-
Due from other funds	1140					-
Other long-term assets	1400					-
Total Assets		\$ -	\$ -	\$ -	\$ -	\$ -
LIABILITIES AND FUND BALANCE						
Liabilities						
Accounts payable	2120	\$ -	\$ -	\$ -	\$ -	\$ -
Salaries, benefits, and payroll taxes payable	2110, 2170, 2330					-
Deferred revenue	2410					-
Notes/bonds payable	2180, 2250, 2310, 2320					-
Lease payable	2315					-
Other liabilities	21XX, 22XX, 23XX					-
Total Liabilities		-	-	-	-	-
Fund Balance						
Nonspendable	2710					-
Restricted	2720					-
Committed	2730					-
Assigned	2740					-
Unassigned	2750					-
Total Fund Balance		-	-	-	-	-
TOTAL LIABILITIES AND FUND BALANCE		\$ -	\$ -	\$ -	\$ -	\$ -

Uniform Monthly Financial Statement

(School Name) with MSID Number ()
County, Florida
Statement of Revenue, Expenditures, and Changes in Fund Balance (Unaudited)
For Month or Quarter Ended and For the Year Ending (DATE)

FTE Projected FTE Actual	% Percent of Projected																				
	General Fund				Special Revenue				Debt Service				Capital Outlay				Total Governmental Funds				
	Account Number	Month/ Quarter Actual	YTD Actual	Annual Budget	% of YTD Actual to Annual Budget	Month/ Quarter Actual	YTD Actual	Annual Budget	% of YTD Actual to Annual Budget	Month/ Quarter Actual	YTD Actual	Annual Budget	% of YTD Actual to Annual Budget	Month/ Quarter Actual	YTD Actual	Annual Budget	% of YTD Actual to Annual Budget	Month/ Quarter Actual	YTD Actual	Annual Budget	% of YTD Actual to Annual Budget
Revenues																					
FEDERAL SOURCES																					
Federal direct	3100	\$ -	\$ -	\$ -	%	\$ -	\$ -	\$ -	%	\$ -	\$ -	\$ -	%	\$ -	\$ -	\$ -	%	\$ -	\$ -	\$ -	%
Federal through state and local	3200																				
STATE SOURCES																					
FEFP	3310																				
Capital outlay	3397																				
Class size reduction	3355																				
School recognition	3361																				
Other state revenue	33XX																				
LOCAL SOURCES																					
Interest	3430																				
Local capital improvement tax	3413																				
Other local revenue	34XX																				
Total Revenues																					
Expenditures																					
Current Expenditures																					
Instruction	5000																				
Instructional support services	6000																				
Board	7100																				
School administration	7300																				
Facilities and acquisition	7400																				
Fiscal services	7500																				
Food services	7600																				
Central services	7700																				
Pupil transportation services	7800																				
Operation of plant	7900																				
Maintenance of plant	8100																				
Administrative technology services	8200																				
Community services	9100																				
Debt service	9200																				
Total Expenditures																					
Excess (Deficiency) of Revenues Over Expenditures																					
Other Financing Sources (Uses)																					
Transfers in	3600																				
Transfers out	9700																				
Total Other Financing Sources (Uses)																					
Net Change in Fund Balances																					
Fund balances, beginning																					
Adjustments to beginning fund balance																					
Fund Balances, Beginning as Restated																					
Fund Balances, Ending		\$ -	\$ -	\$ -	%	\$ -	\$ -	\$ -	%	\$ -	\$ -	\$ -	%	\$ -	\$ -	\$ -	%	\$ -	\$ -	\$ -	%

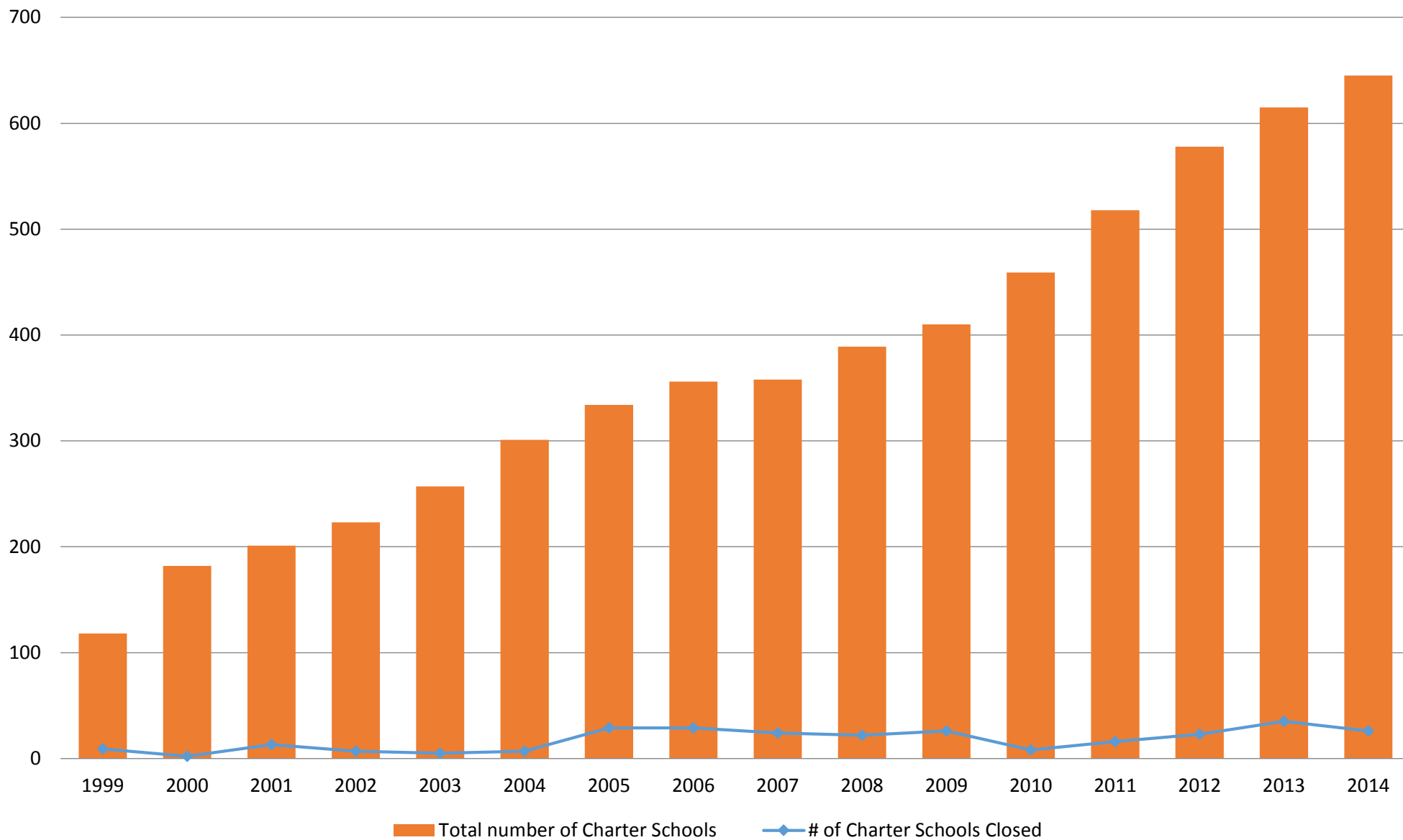
Expedited Reviews and Financial Corrective Action

- Districts can require financial corrective action plans if:
 - Charter fails to comply with reporting requirements
 - Audit reveals financial condition or deteriorating financial condition
 - Review of monthly financial statement reveals deteriorating financial condition
 - Enrollment less than 70% of projected
 - Enrollment insufficient to generate necessary revenues
 - Actual expenses exceed budgeted expenses for three consecutive months
 - Unbudgeted need arises for which school has insufficient reserves
 - Other

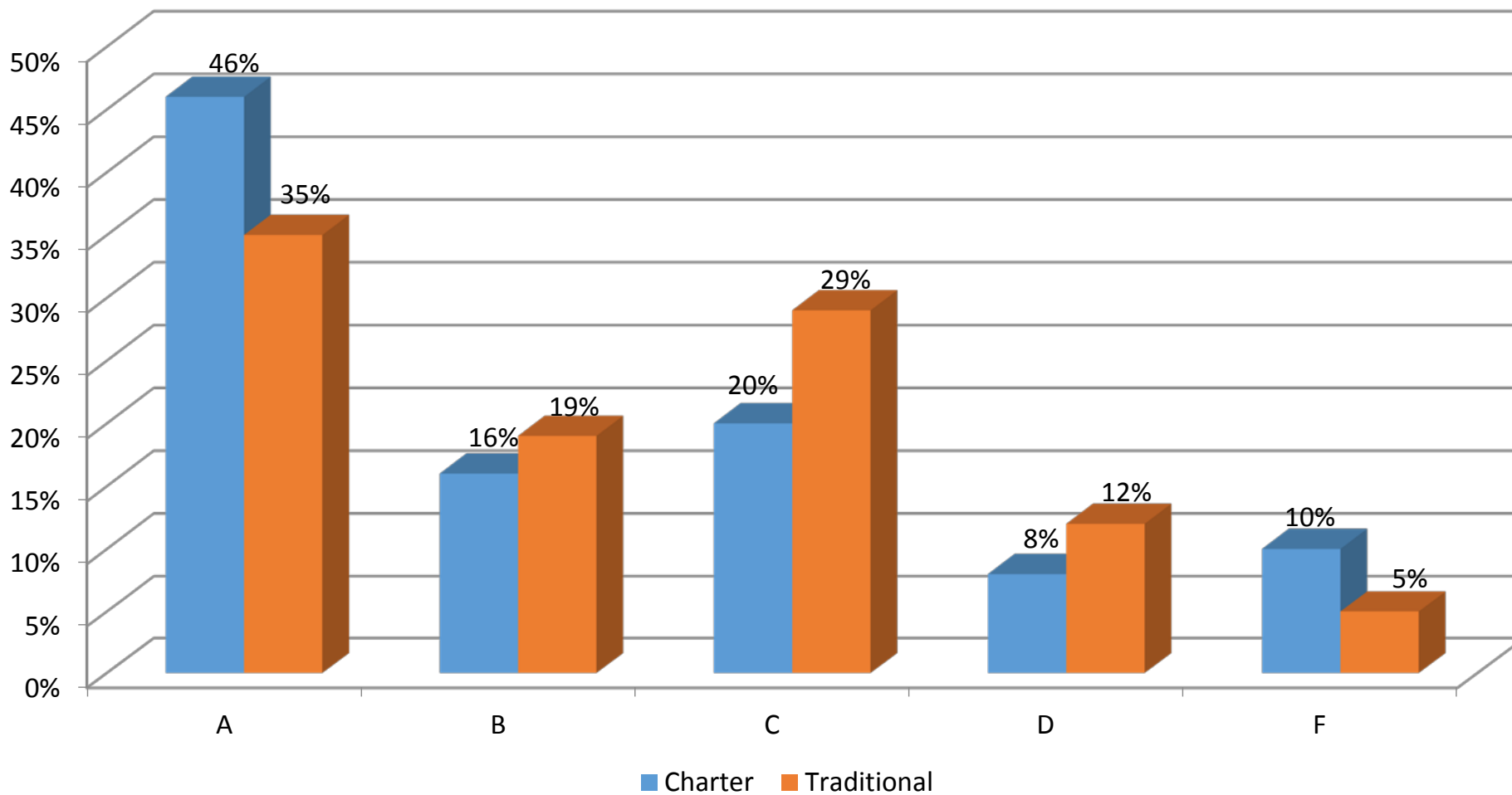
District Authority to Close Charter School

- Statutory authority
 - Failure to participate in the state's education accountability system created in section 1008.31, Florida Statutes
 - Failure to meet the requirements for student performance stated in the charter contract
 - Failure to meet generally accepted standards of fiscal management
 - Violation of law
 - Other good cause shown
- Contractual terms
 - Standard contract includes 18 good cause reasons for termination or non-renewal

Number of Charter Schools Closed by Year

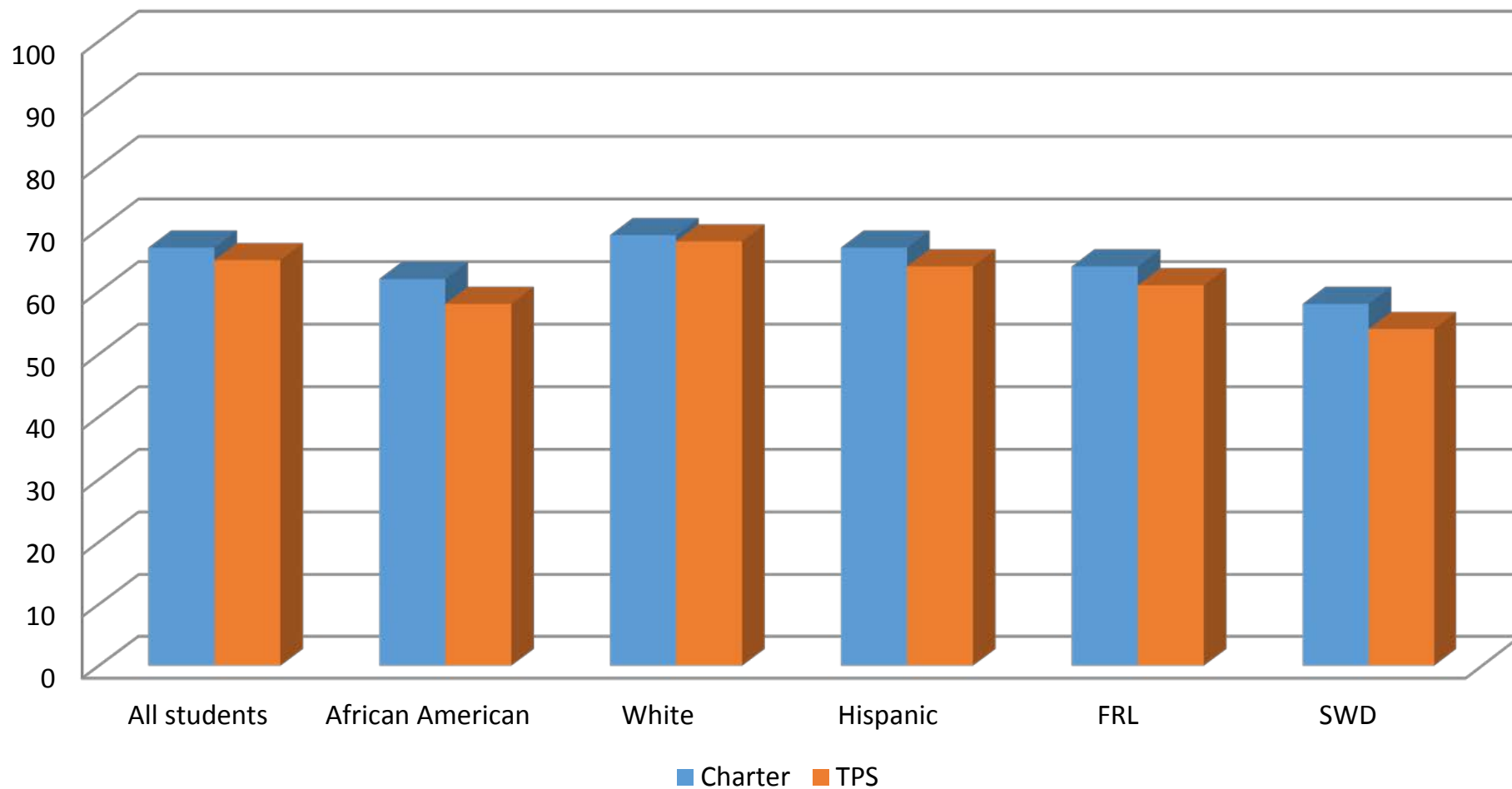


Performance: School Grades 2014



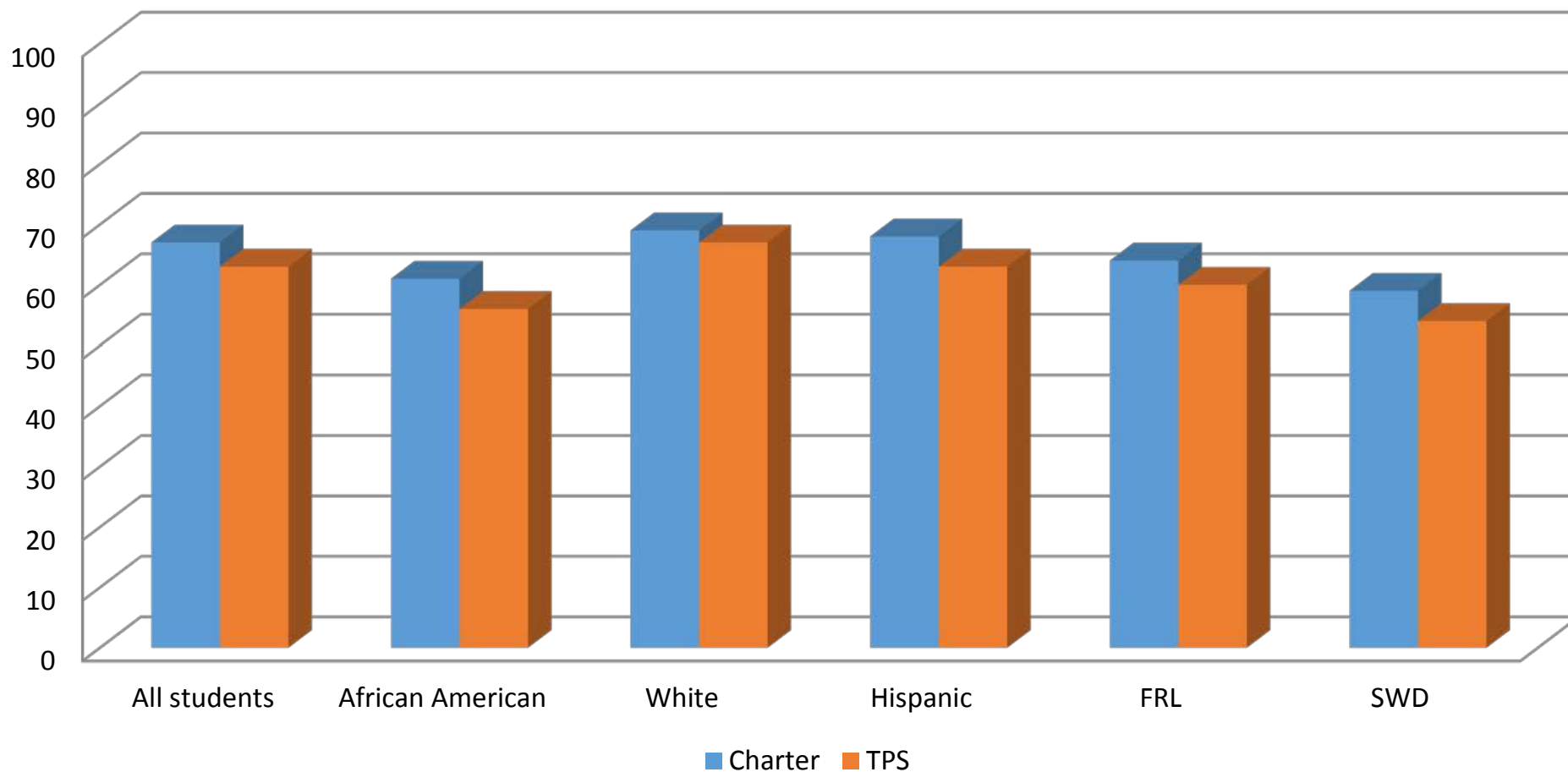
Performance

Learning Gains: Mathematics



Performance

Learning Gains: Reading



National Assessment of Educational Progress (NAEP) Results: 2013

All Students	Charter	Traditional
4 th Grade Math	245	241
8 th Grade Math	288	280
4 th Grade Reading	234	227
8 th Grade Reading	275	265

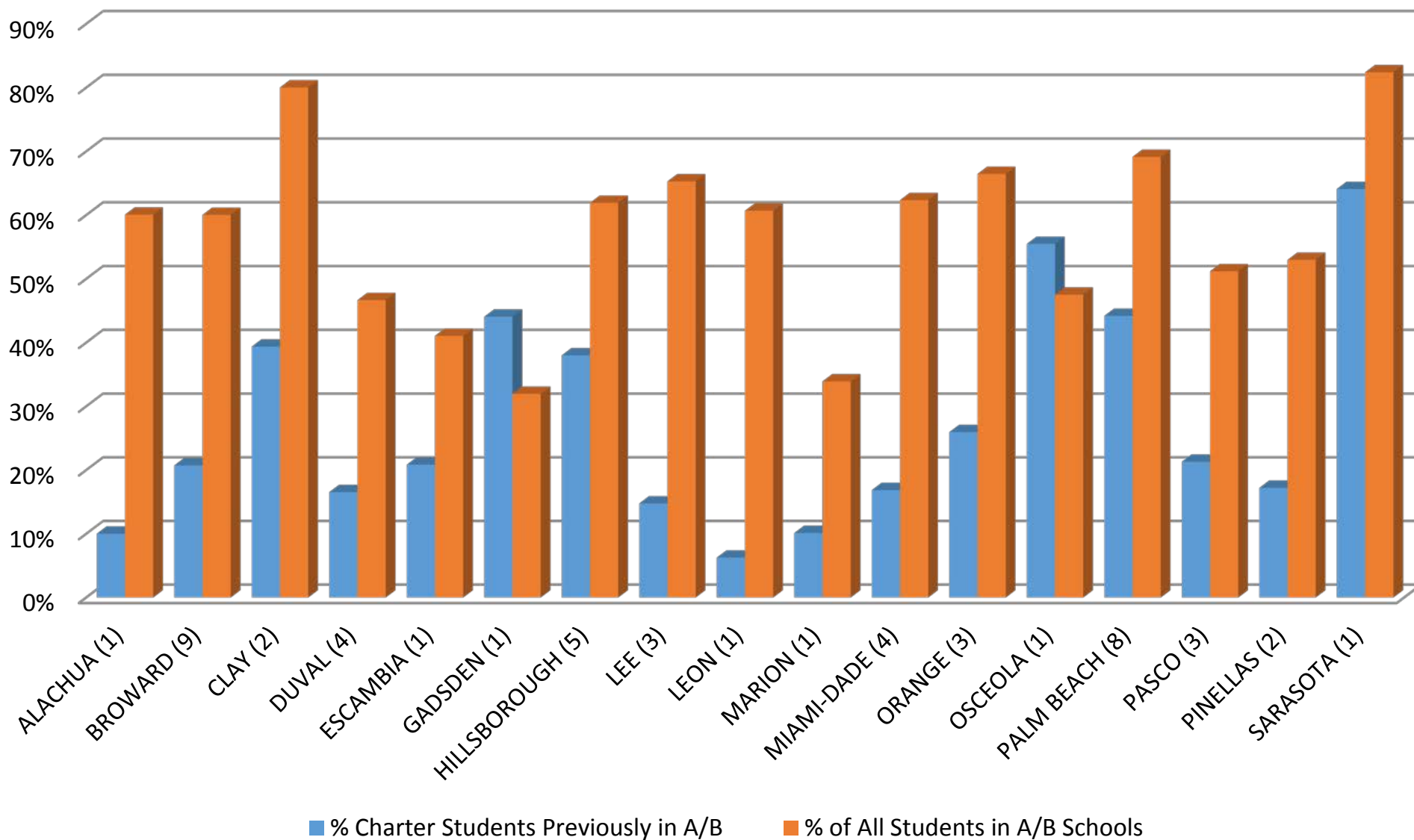
Students Eligible for Free/Reduced Lunch	Charter	Traditional
4 th Grade Math	239	233
8 th Grade Math	279	270
4 th Grade Reading	227	217
8 th Grade Reading	268	257

Charter School Locations

- Representation in high-need/low-need areas
 - Location does not always correlate with enrollment
- Analysis of enrollment in new charter schools
 - 50 new charter schools opened in 2014-15
 - Enrolled 10,000 students
 - What school did students previously attend?
 - School grade of previously attended school?

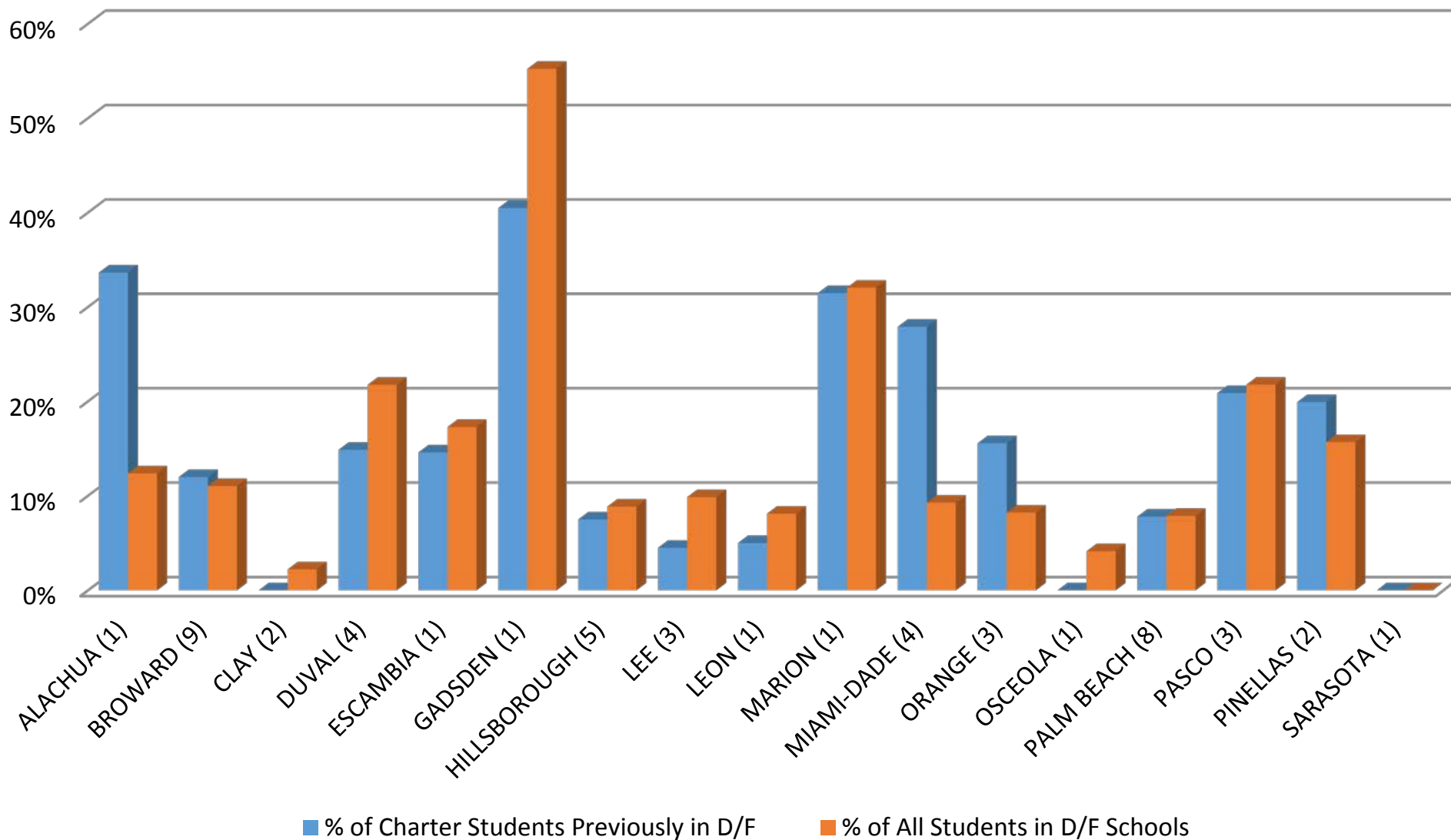
Percentage of New Charter School Students Previously Enrolled in A or B School

New Charter Schools Opened in 2014-15

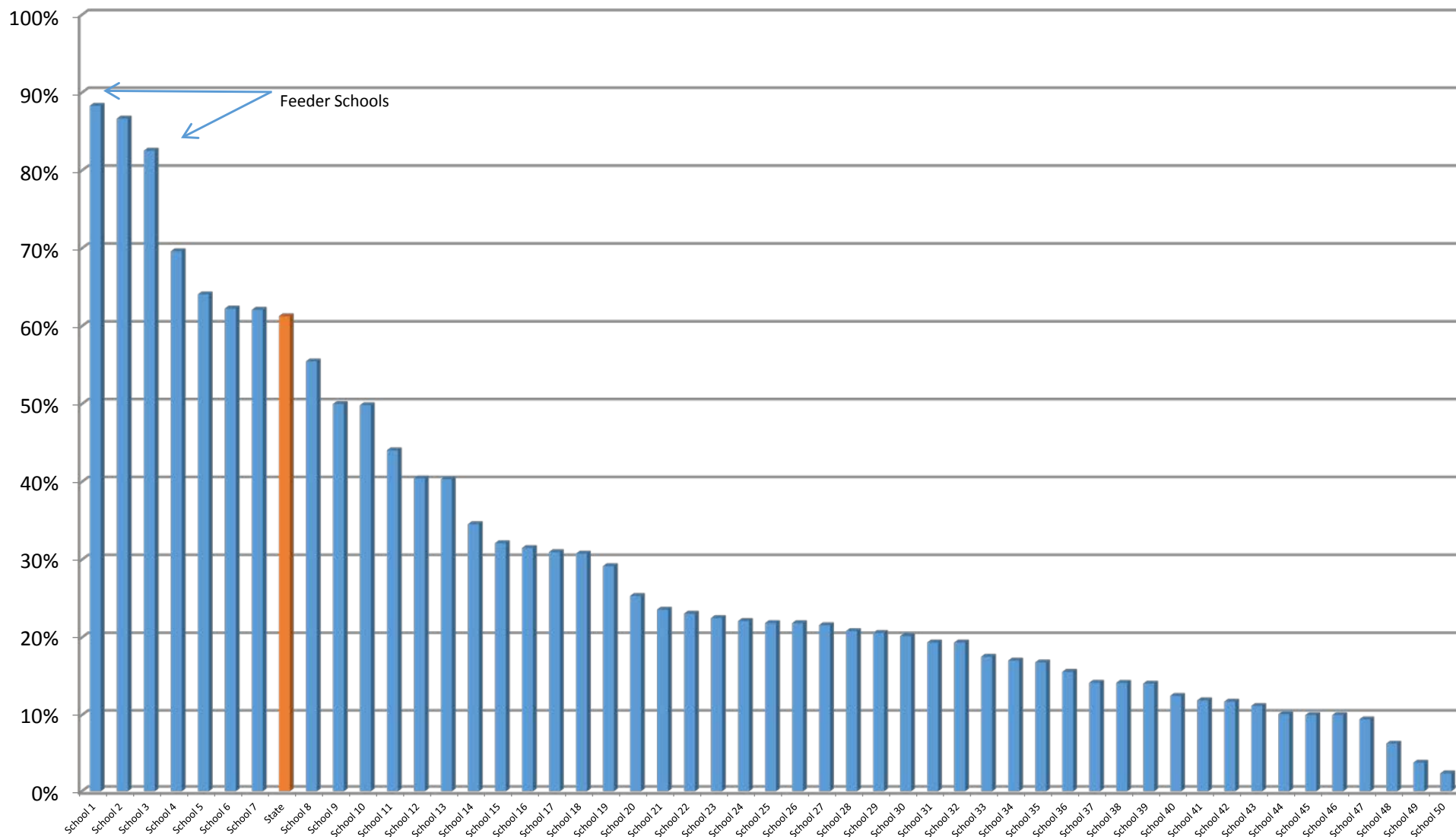


Percentage of New Charter School Students Previously Enrolled in D or F School

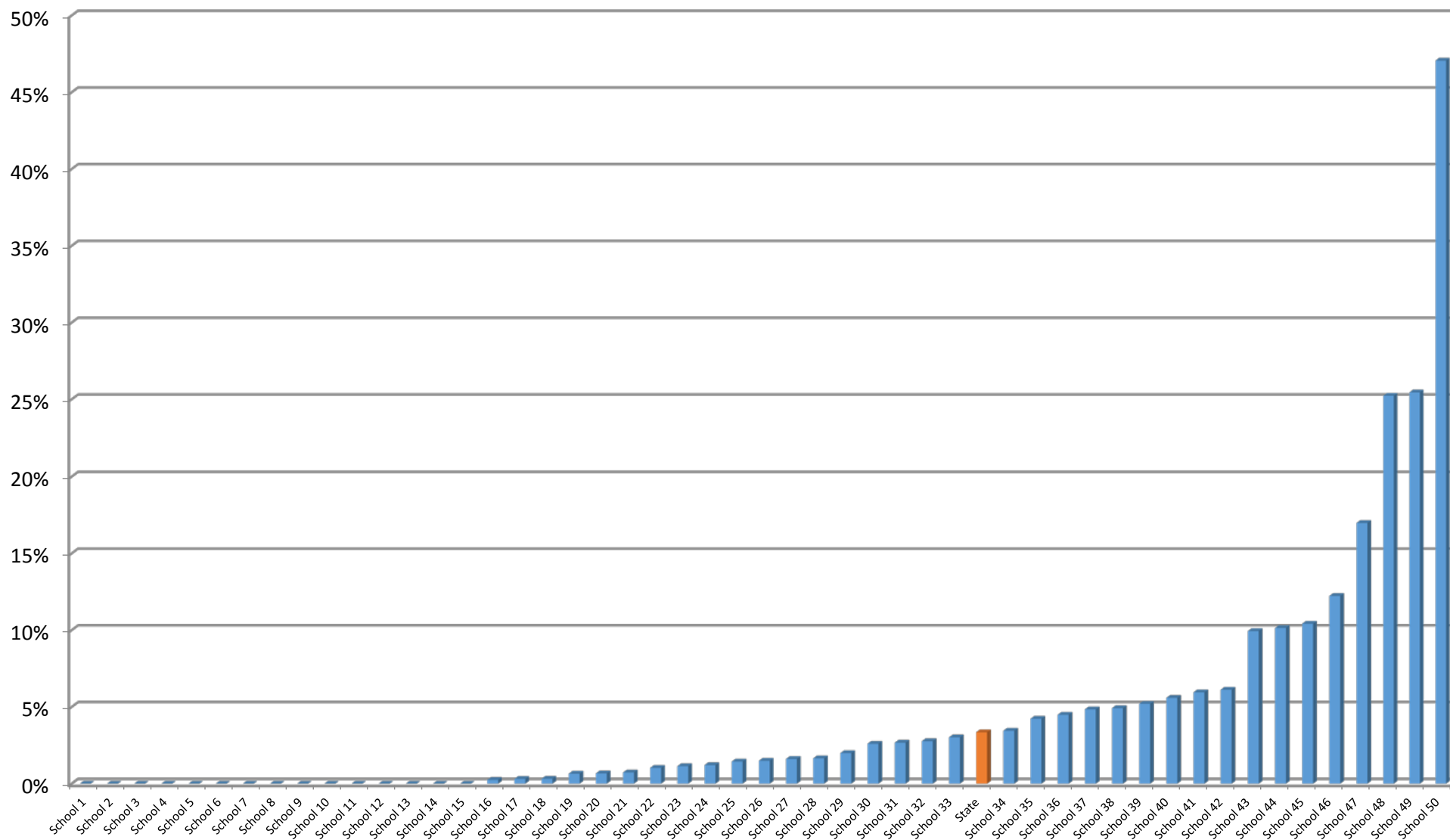
New Charter Schools Opened in 2014-15



% of Students from Previous A or B School



% of Students Previously Enrolled in F School

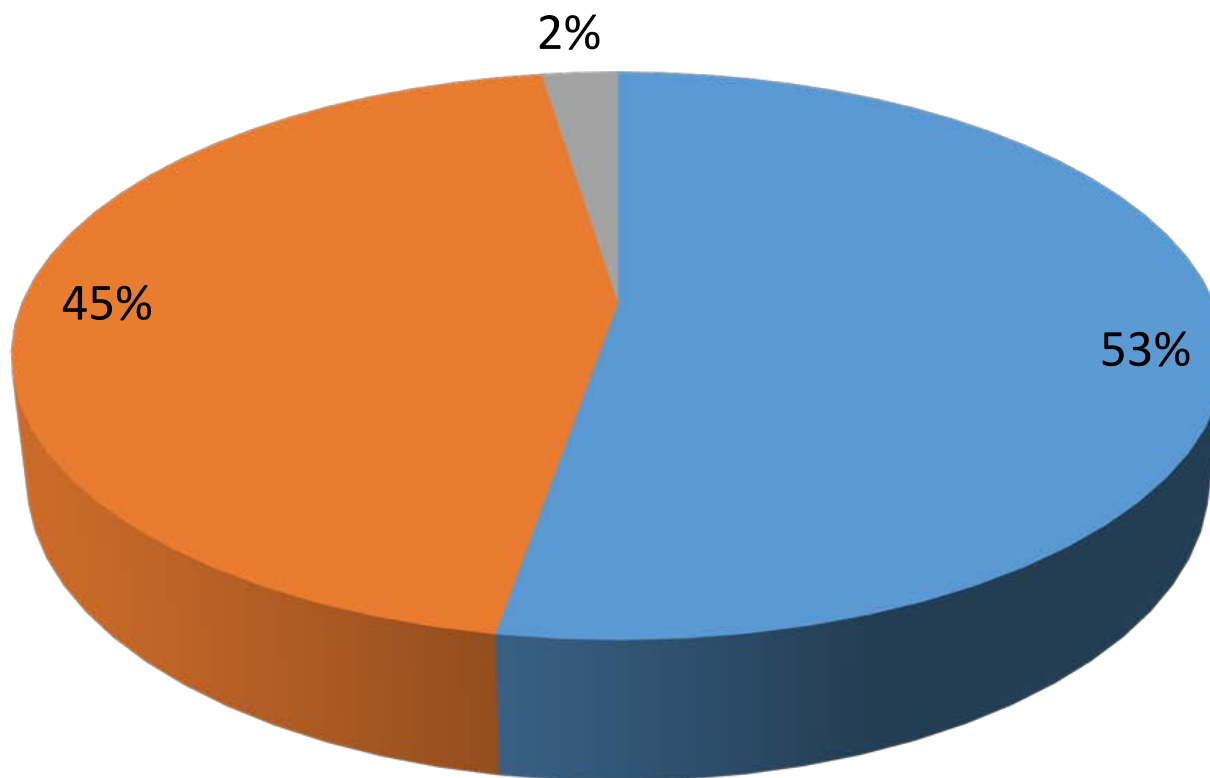


Models

- Independent
 - Non-Profit governing board
 - May have contracts with individual vendors
 - No contract for comprehensive services
- Charter Management Organization (CMO)
 - Non-profit governing board
 - Non-profit network affiliation
- Educational Management Organization (EMO)
 - Non-profit governing board
 - Performance-based contract with EMO for comprehensive services

Models: 2013-2014 School Year

■ Independent ■ EMO ■ CMO



Funding: Operational

- Students enrolled in a charter school, regardless of the sponsorship, shall be funded as if they are in a basic program or a special program, the same as students enrolled in other public schools in the school district
- District withholds administrative fee of up to 5% of FEFP
 - 5% for up to 250 students
 - 2% for charter schools designated as high-performing
 - 250 student middle school- \$75,000

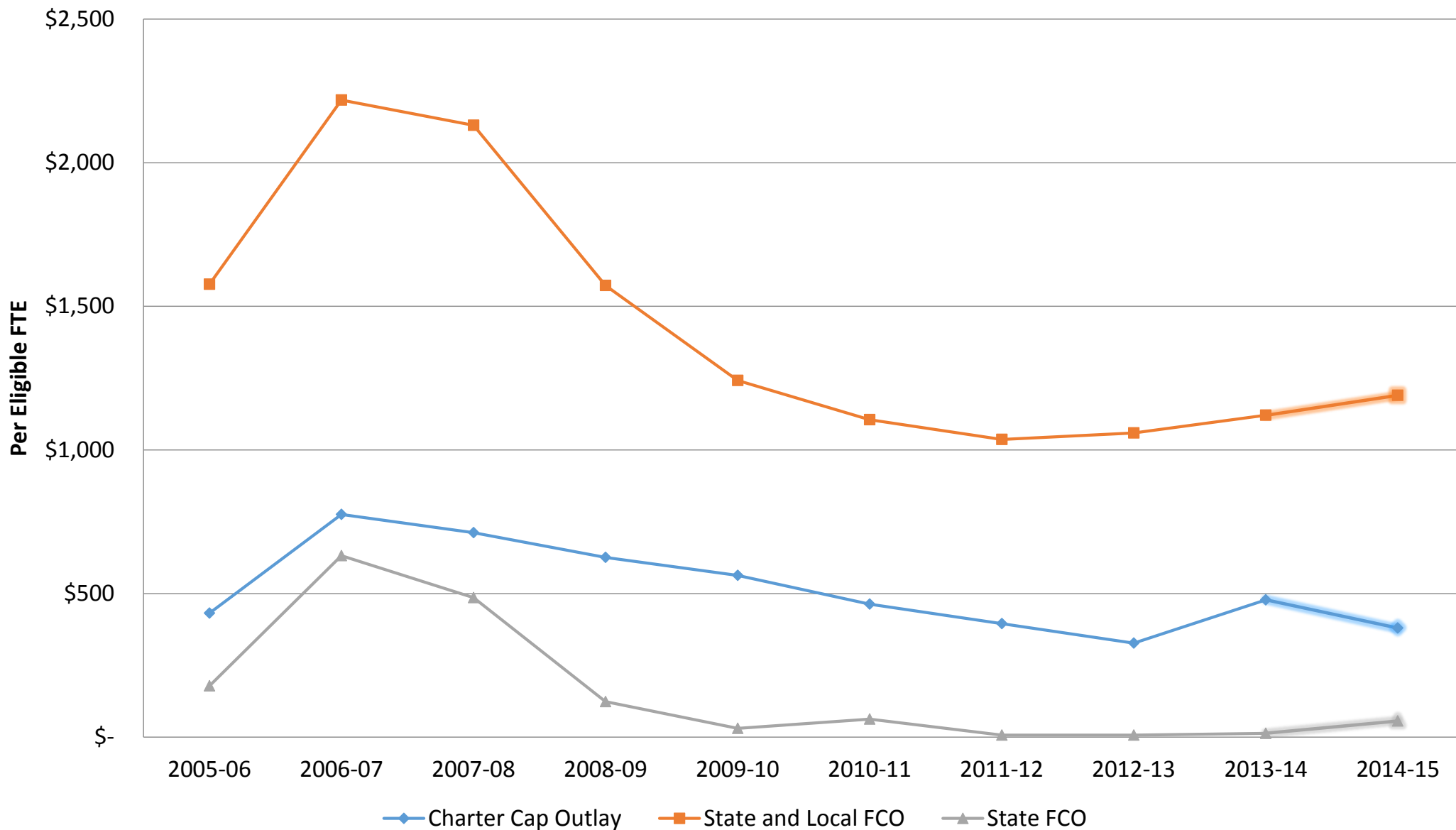
Funding: Federal

- If the district school board is providing programs or services to students funded by federal funds, any eligible students enrolled in charter schools in the school district shall be provided federal funds for the same level of service provided students in the schools operated by the district school board

Charter School Capital Outlay

- Annual appropriation
- Eligibility criteria (s. 1013.62, F.S.)
 - 3 full years of operation complete
 - Several exceptions, including SACS accreditation
 - Financial and academic standing
 - Approved by District to operate
 - Cannot operate in District owned facility
- Approximately 75% of existing charter schools receive charter school capital outlay
- Allocated to school by formula
 - FTE
 - Grade levels served

Charter School Capital Outlay and District Fixed Capital 2005-Present



Funding: Fixed Capital Outlay

- Allocation (s. 1013.62 (1)(b), F.S.)
 - Priority I
 - Charter schools that received capital outlay during 2005-06 at the lesser of current year capital outlay FTE or 2005-06 capital outlay FTE
 - Priority II: Funds Remaining After Priority 1
 - Excess funds allocated in an amount equal to the capital outlay FTE to eligible schools not included in priority I and to those priority I schools experiencing growth from 2005-06
 - Funds Remaining After Priority II
 - Allocated to all eligible charter schools
- Maximum of $1/15^{\text{th}}$ of cost per student station pursuant to s. 1013.64(6)(b), F.S.

Funding: Fixed Capital

- Charter School Capital Outlay Allowable Uses
 - Purchase of real property
 - Construction of school facilities
 - Purchase, lease-purchase, or lease of permanent or relocatable school facilities
 - Purchase of vehicles to transport students to and from the charter school
 - Renovation, repair, and maintenance of school facilities that the charter school owns or is purchasing through a lease-purchase or long-term lease of 5 years or longer

Funding: Fixed Capital

- Charter School Capital Outlay
 - Effective July 1, 2008, purchase, lease-purchase, or lease of new and replacement equipment, and enterprise resource software applications that are classified as capital assets in accordance with definitions of the Governmental Accounting Standards Board, have a useful life of at least 5 years, and are used to support schoolwide administration or state-mandated reporting requirements
 - Payment of the cost of premiums for property and casualty insurance necessary to insure the school facilities
 - Purchase, lease-purchase, or lease of driver's education vehicles; motor vehicles used for the maintenance or operation of plants and equipment; security vehicles; or vehicles used in storing or distributing materials and equipment

Reversion Upon Closure

- When a charter school is nonrenewed or terminated, any unencumbered funds and all equipment and property purchased with district public funds shall revert to the ownership of the district school board
- The reversion of all property secured with public funds is subject to the complete satisfaction of all lawful liens or encumbrances. If there are additional local issues such as the shared use of facilities or partial ownership of facilities or property, these issues shall be agreed to in the charter contract prior to the expenditure of funds



www.FLDOE.org



www.FLDOE.org

THE FLORIDA SENATE

APPEARANCE RECORD

(Deliver BOTH copies of this form to the Senator or Senate Professional Staff conducting the meeting)

3-5-15

Meeting Date

Bill Number (if applicable)

Topic Charter Schools

Amendment Barcode (if applicable)

Name Tom Madjanis

Job Title Exec. Director KIPP

Address

Phone 904-738-4145

Street

Jacksonville

Email

City

State

Zip

Speaking: For Against Information

Waive Speaking: In Support Against
(The Chair will read this information into the record.)

Representing

Appearing at request of Chair: Yes No

Lobbyist registered with Legislature: Yes No

While it is a Senate tradition to encourage public testimony, time may not permit all persons wishing to speak to be heard at this meeting. Those who do speak may be asked to limit their remarks so that as many persons as possible can be heard.

This form is part of the public record for this meeting.

THE FLORIDA SENATE

APPEARANCE RECORD

(Deliver BOTH copies of this form to the Senator or Senate Professional Staff conducting the meeting)

3/5/2015

Meeting Date

Bill Number (if applicable)

Topic Fix Capital Funding for Charter Schools

Amendment Barcode (if applicable)

Name Jesse L Jackson

Job Title Superintendent

Address 13rd E. Central Av.

Phone 863-604-8221

Street

Lake Wales FL

33859

Email jackson@lwcharterschools.com

City

State

Zip

Speaking: For Against Information

Waive Speaking: In Support Against
(The Chair will read this information into the record.)

Representing Charter Schools

Appearing at request of Chair: Yes No

Lobbyist registered with Legislature: Yes No

While it is a Senate tradition to encourage public testimony, time may not permit all persons wishing to speak to be heard at this meeting. Those who do speak may be asked to limit their remarks so that as many persons as possible can be heard.

This form is part of the public record for this meeting.

THE FLORIDA SENATE
APPEARANCE RECORD

(Deliver BOTH copies of this form to the Senator or Senate Professional Staff conducting the meeting)

3-5-15
Meeting Date

Bill Number (if applicable)

Topic Charter Bills

Amendment Barcode (if applicable)

Name Kathryn LeRoy

Job Title Superintendent Polk Co. Public Schools

Address 1915 S. Floral Ave

Phone 863-430-2244

Bartow FL 3811
City State Zip

Email ~~to~~ Kathryn.leroy@Polk-fl.net

Speaking: For Against Information

Waive Speaking: In Support Against
(The Chair will read this information into the record.)

Representing Polk County Public Schools

Appearing at request of Chair: Yes No

Lobbyist registered with Legislature: Yes No

While it is a Senate tradition to encourage public testimony, time may not permit all persons wishing to speak to be heard at this meeting. Those who do speak may be asked to limit their remarks so that as many persons as possible can be heard.

This form is part of the public record for this meeting.

THE FLORIDA SENATE

APPEARANCE RECORD

(Deliver BOTH copies of this form to the Senator or Senate Professional Staff conducting the meeting)

3/5/15
Meeting Date

Bill Number (if applicable)

Topic Charter Schools

Amendment Barcode (if applicable)

Name ALBERTO CARVALHO

Job Title SUPERINTENDENT MIAMI-DADE

Address 145 NE 2nd AVE

Phone _____

Street

MIAMI FL 33132

Email _____

City

State

Zip

Speaking: For Against Information

Waive Speaking: In Support Against
(The Chair will read this information into the record.)

Representing Miami-Dade Public Schools

Appearing at request of Chair: Yes No

Lobbyist registered with Legislature: Yes No

While it is a Senate tradition to encourage public testimony, time may not permit all persons wishing to speak to be heard at this meeting. Those who do speak may be asked to limit their remarks so that as many persons as possible can be heard.

This form is part of the public record for this meeting.

THE FLORIDA SENATE
APPEARANCE RECORD

(Deliver BOTH copies of this form to the Senator or Senate Professional Staff conducting the meeting)

3/5/15
Meeting Date

Bill Number (if applicable)

Topic Charter Schools

Amendment Barcode (if applicable)

Name Robert Runcie

Job Title Superintendent, Broward County Public Schools

Address _____

Phone 954.552.7886

Street

Ft. Lauderdale, FL

City

State

Zip

Email r.r@browardschools.com

Speaking: For Against Information

Waive Speaking: In Support Against
(The Chair will read this information into the record.)

Representing Broward County Public Schools

Appearing at request of Chair: Yes No

Lobbyist registered with Legislature: Yes No

While it is a Senate tradition to encourage public testimony, time may not permit all persons wishing to speak to be heard at this meeting. Those who do speak may be asked to limit their remarks so that as many persons as possible can be heard.

This form is part of the public record for this meeting.

S-001 (10/14/14)

THE FLORIDA SENATE

APPEARANCE RECORD

(Deliver BOTH copies of this form to the Senator or Senate Professional Staff conducting the meeting)

3/5/15

Meeting Date

Bill Number (if applicable)

Topic Charter Schools

Amendment Barcode (if applicable)

Name Jon Hage

Job Title Founder/CEO Charter Schools USA

Address 800 Corporate Drive Suite 124 Phone 954-416-4071

Street

Ft Lauderdale FL 33334

City

State

Zip

Email jhage@charterschoolsusa.com

Speaking: [] For [] Against [X] Information

Waive Speaking: [] In Support [] Against (The Chair will read this information into the record.)

Representing Charter Schools USA

Appearing at request of Chair: [X] Yes [] No

Lobbyist registered with Legislature: [] Yes [X] No

While it is a Senate tradition to encourage public testimony, time may not permit all persons wishing to speak to be heard at this meeting. Those who do speak may be asked to limit their remarks so that as many persons as possible can be heard.

This form is part of the public record for this meeting.

THE FLORIDA SENATE
APPEARANCE RECORD

(Deliver BOTH copies of this form to the Senator or Senate Professional Staff conducting the meeting)

3.5.15
Meeting Date

Bill Number (if applicable)

Topic Charter School

Amendment Barcode (if applicable)

Name Charles Gibson

Job Title Attorney

Address 3634 Grand Ave

Phone _____

Street

Coconut Grove, FL 33133

Email _____

City

State

Zip

Speaking: For Against Information

Waive Speaking: In Support Against
(The Chair will read this information into the record.)

Representing Gibson Charter School

Appearing at request of Chair: Yes No

Lobbyist registered with Legislature: Yes No

While it is a Senate tradition to encourage public testimony, time may not permit all persons wishing to speak to be heard at this meeting. Those who do speak may be asked to limit their remarks so that as many persons as possible can be heard.

This form is part of the public record for this meeting.

S-001 (10/14/14)

THE FLORIDA SENATE

APPEARANCE RECORD

(Deliver BOTH copies of this form to the Senator or Senate Professional Staff conducting the meeting)

3/5/15

Meeting Date

Bill Number (if applicable)

Topic CHARTON Schools

Amendment Barcode (if applicable)

Name KURT BROWNING

Job Title PASCO Supt of Schools

Address 227 LAND O LAKES BLVD

Phone 813 794 2657

Street

CITY STATE ZIP LAND O LAKES FL 34238

Email KSBROS@PASCO.K12.FL.US

Speaking: For Against Information

Waive Speaking: In Support Against (The Chair will read this information into the record.)

Representing PASCO School Dist

Appearing at request of Chair: Yes No

Lobbyist registered with Legislature: Yes No

While it is a Senate tradition to encourage public testimony, time may not permit all persons wishing to speak to be heard at this meeting. Those who do speak may be asked to limit their remarks so that as many persons as possible can be heard.

This form is part of the public record for this meeting.

THE FLORIDA SENATE
APPEARANCE RECORD

(Deliver BOTH copies of this form to the Senator or Senate Professional Staff conducting the meeting)

03/05/2015

Meeting Date

Bill Number (if applicable)

Topic Charter School Discussion

Amendment Barcode (if applicable)

Name Adam Miller

Job Title Executive Director, Office of Independent Education and Parental Choice

Address 325 W. Gaines St.

Phone Adam.Miller@fldoe.org

Street

Tallahassee

FL

32399

Email 850-245-0502

City

State

Zip

Speaking: For Against Information

Waive Speaking: In Support Against
(The Chair will read this information into the record.)

Representing Florida Department of Education

Appearing at request of Chair: Yes No

Lobbyist registered with Legislature: Yes No

While it is a Senate tradition to encourage public testimony, time may not permit all persons wishing to speak to be heard at this meeting. Those who do speak may be asked to limit their remarks so that as many persons as possible can be heard.

This form is part of the public record for this meeting.

S-001 (10/14/14)

THE FLORIDA SENATE

APPEARANCE RECORD

(Deliver BOTH copies of this form to the Senator or Senate Professional Staff conducting the meeting)

March 5, 2015

N/A

Meeting Date

Bill Number (if applicable)
N/A

Topic Charter Schools

Amendment Barcode (if applicable)

Name Larry Williams

Job Title Director of Governmental Affairs

Address 1225 S.E. 2nd Ave.

Phone 904-557-8593

Street

Fort Lauderdale

FL

33316

City

State

Zip

Email larry@larrywilliamsconsulting.com

Speaking: [] For [] Against [x] Information

Waive Speaking: [] In Support [] Against
(The Chair will read this information into the record.)

Representing Florida Consortium of Public Charter Schools

Appearing at request of Chair: [] Yes [x] No

Lobbyist registered with Legislature: [x] Yes [] No

While it is a Senate tradition to encourage public testimony, time may not permit all persons wishing to speak to be heard at this meeting. Those who do speak may be asked to limit their remarks so that as many persons as possible can be heard.



THE FLORIDA SENATE

Tallahassee, Florida 32399-1100

COMMITTEES:
Appropriations Subcommittee on
Transportation, Tourism, and Economic
Development, *Chair*
Appropriations
Commerce and Tourism
Governmental Oversight and Accountability
Regulated Industries
Rules

SENATOR JACK LATVALA
20th District

March 5, 2015

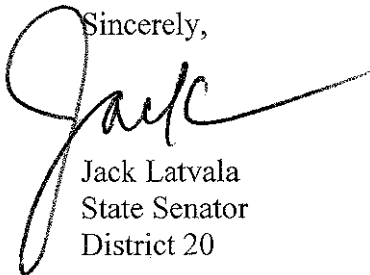
The Honorable Tom Lee, Chairman
Senate Committee on Appropriations
201 The Capitol
404 S. Monroe Street
Tallahassee, FL 32399-1100

Dear Chairman Lee:

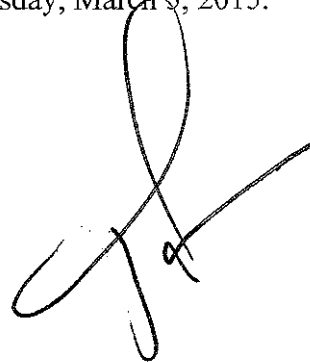
Per my earlier conversation with you, I respectfully request to be excused from the meeting of the Appropriations Committee which is scheduled for Thursday, March 5, 2015.

Thank you for your consideration.

Sincerely,



Jack Latvala
State Senator
District 20



Cc: Cindy Kynoch, Staff Director
Alicia Weiss, Administrative Assistant

REPLY TO:

- 26133 U.S. Highway 19 North, Suite 201, Clearwater, Florida 33763 (727) 793-2797 FAX: (727) 793-2799
- 408 Senate Office Building, 404 South Monroe Street, Tallahassee, Florida 32399-1100 (850) 487-5020

Senate's Website: www.flsenate.gov

ANDY GARDINER
President of the Senate

GARRETT RICHTER
President Pro Tempore

CourtSmart Tag Report

Room: KN 412

Case:

Type:

Caption: Senate Appropriations Committee

Judge:

Started: 3/5/2015 1:10:20 PM

Ends: 3/5/2015 3:00:52 PM Length: 01:50:33

1:10:22 PM	Sen. Lee (Chair)
1:12:39 PM	TAB 1 - Workshop on Charter Schools
1:12:52 PM	Adam Miller, Executive Director, Office of Independent Education and Parental Choice, Department of Education
1:35:54 PM	Sen. Lee
1:36:06 PM	Sen. Margolis
1:36:44 PM	A. Miller
1:37:34 PM	Sen. Lee
1:37:38 PM	Sen. Montford
1:38:22 PM	A. Miller
1:38:26 PM	Sen. Montford
1:38:57 PM	A. Miller
1:39:47 PM	Sen. Montford
1:40:22 PM	A. Miller
1:40:44 PM	Sen. Lee
1:41:37 PM	Kurt Browning, Superintendent, Pasco County
1:48:55 PM	Sen. Lee
1:49:36 PM	Kathryn LeRoy, Superintendent, Polk County
1:52:58 PM	Sen. Lee
1:53:05 PM	Jesse Jackson, Superintendent, Lake Wales Charter School System
1:56:32 PM	Sen. Lee
1:56:48 PM	Robert Runcie, Superintendent, Broward County
2:02:35 PM	Sen. Lee
2:03:04 PM	Tom Majdanics, Executive Director, KIPP Jacksonville
2:09:45 PM	Sen. Lee
2:09:56 PM	Charles Gibson, Founder, Gibson Charter School
2:16:20 PM	Sen. Lee
2:16:30 PM	Jon Hage, Founder, Charter Schools U.S.A.
2:22:40 PM	Sen. Lee
2:23:03 PM	Alberto Carvalho, Superintendent, Miami-Dade County
2:30:15 PM	Sen. Lee
2:30:32 PM	Sen. Ring
2:30:44 PM	J. Hage
2:31:06 PM	Sen. Ring
2:31:14 PM	J. Hage
2:31:48 PM	Sen. Lee
2:31:53 PM	Sen. Gaetz
2:32:44 PM	Sen. Lee
2:32:50 PM	R. Runcie
2:34:14 PM	A. Carvalho
2:35:28 PM	Sen. Lee
2:35:28 PM	Sen. Gaetz
2:36:17 PM	T. Majdanics
2:38:00 PM	J. Jackson
2:39:12 PM	Sen. Margolis
2:40:02 PM	R. Runcie
2:41:18 PM	Sen. Margolis
2:42:35 PM	Sen. Benacquisto
2:43:10 PM	J. Hage
2:45:17 PM	J. Jackson
2:47:39 PM	Sen. Montford
2:48:24 PM	J. Hage

2:49:52 PM	Sen. Montford
2:50:24 PM	J. Hage
2:52:47 PM	ANNOUNCEMENTS
2:52:48 PM	Sen. Lee
2:57:16 PM	Sen. Gaetz
2:58:53 PM	Sen. Lee
2:59:12 PM	Sen. Garcia
3:00:38 PM	Sen. Lee