

Public Hearing on Redistricting Boca Raton (August 16, 2011)

Contents

Hearing Report.....	3
Submission from Lisa Aronson	4
Submission from Michael Barnett	7
Submission from Hugh Brown	8
Submission from Kristine deHaseth	10
Submission from Dianne Douglas DeWolfe.....	12
Submission from Jessica Dornblasu	14
Submission from Annette Evans.....	15
Submission from Peter Feaman	16
Submission from Robert Ganger	19
Submission from Susan Haynie	23
Submission from Linda Johnson.....	25
Submission from Mike Jones.....	27
Submission from Mrs. Robert Kotecki	28
Submission from Steven Laine	29
Submission from David Lewin	32
Submission from Margaret Mackey.....	35
Submission from Pat Magrogan.....	39
Submission from Yolanda Mercedes	40
Submission from Howard Parmet.....	42
Submission from Cynthia Plocelman.....	43
Submission from Bob Roath.....	44
Submission from John Robarts	45
Submission from Allen Robbins.....	47
Submission from Herman Robinson.....	55
Submission from Stacy S. Ruwe.....	56
Submission from Shirley L. Schaff.....	57
Submission from Mark Schneider	58
Submission from John R. Smith	60
Submission from Joy Stone	61

Submission from Diane Van der Meer 62
Submission from Margie J. Walden..... 63
Handouts 64
Displays Prepared by Florida Senate 66

Hearing Report

Date: August 16, 2011

City: Boca Raton

Location: Florida Atlantic University Friedberg Lifelong Learning Center

Time: 10:00am-1:00pm

Number of Speakers: 93 out of 110

Total Attendance: 237

The public hearing in Boca Raton took place at Florida Atlantic University in the Friedberg Lifelong Learning Center (777 Glades Rd., Boca Raton, FL 33431). Prior to the meeting, a map with directions to the hearing and parking instructions was posted on the internet. Legislative staff posted signs outside the building and the room to provide directions to the hearing, and was on hand to answer questions and display district building software outside the meeting room.

The hearing was advertised in The Palm Beach Post and The Sun-Sentinel on August 14 and 15, in The Miami Herald on August 14 and 16, and in El Nuevo Herald on August 14. Each chamber's website published the public notice, and social media websites invited the public to the hearing as well. Senate staff sent invitations to more than 30 school board officials, over 50 county commissioners, administrators, and personnel under local supervisors of elections. Over 620 city-level elected officials in South Florida and more than 240 public interest group leaders received invitations encouraging leaders and the groups they represent to attend the hearing.

The hearing was streamed live on The Florida Channel's website, recorded, and subsequently re-aired. There were 11 senators and 24 representatives present at the hearing chaired by Senator Gaetz. Of the 237 people who filled out attendance cards 110 indicated they wanted to speak at the hearing. At the time of adjournment 17 speakers remained. Senator Gaetz invited those speakers to supplement the record with their written comments or to submit comments via email.

Submission from Lisa Aronson



Please Provide Completed Form To:
 Legislative Staff at the Meeting.

or
 Email to: mydistrictbuilder@myfloridahouse.gov
 and redistrictflorida@flsenate.gov.

or
 Fax to (850) 487-6413



Florida Redistricting Suggestion Form

By submitting this form, I acknowledge that my comments and suggestions may be displayed on www.floridaredistricting.org and www.flsenate.gov/redistricting or other public websites maintained by the Florida Legislature. Note: the entirety of this form is public record.

*Field is required.

Prefix Comm *First Name Lisa *Last Name Aronson Suffix _____

Organization Name (If applicable) City of Coconut Creek

*Your Address 4800 W. Copans Rd. *City Coconut Creek *State FL *Zip 33073

Your County Broward Your Email laronson@coconutcreek.net

*What type of map are you commenting on? Congressional State House State Senate

*Would you like to receive email updates regarding Florida Redistricting? Yes No

Please provide detailed comments regarding your redistricting suggestion or request.

See attached

Good morning honorable members of the Florida Legislature:

My name is Lisa Aronson and I am a city commissioner for the city of Coconut Creek in northern Broward County. For those of you unfamiliar with Coconut Creek, our beautiful city is bordered on the north by the Hillsboro Canal which divides Broward County from Palm Beach County, and our southern border is primarily Atlantic Boulevard. Our eastern border is the Florida Turnpike and our western border is generally State Road 7. Coconut Creek, proudly known as the Butterfly Capital of the World, is now home to almost 53,000 residents based on the 2010 Census. Our population is diverse throughout our entire city.

Since 2002, we have been fortunate to have representation from two members of Congress, two State Senators and two State Representatives. We are grateful that several of you and your colleagues have local government experience, and Rep. Jim Waldman is a former Mayor and City Commissioner for the City of Coconut Creek.

While I am not here today to make specific recommendations about proposed maps for the Florida House and Senate or for congressional representation in Florida, I am here to convey our City Commission's consensus. At a recent City Commission workshop held on August 4th, the consensus of our commission was to voice our preference for having continuing representation by two members of Congress, two State Senators and two State Representatives. We want you to know we appreciate having opportunities to discuss issues and interests with multiple elected leaders. If you are inclined to keep our entire city together within one district each as the maps are

drawn, please keep in mind the City of Coconut Creek Commission's preference for two.

I commend the Florida House and Florida Senate for the incredible number of resources available online to give the public the opportunity to learn about the redistricting process and the multiple ways one can participate. Thank you for taking the time to hear from me and numerous South Florida residents about redistricting.

###

Submission from Michael Barnett

Thank you, Mr. Chairman & members, for taking the time to listen to the citizens of Palm Beach County today.

My name is Michael Barnett and as a Palm Beach County resident, I rise to speak today to the importance of ensuring that African Americans in Palm Beach County have the chance to elect candidates of their choice in House, Senate and Congressional maps. I know that over the last few decades, this body has made great strides in the representation of racial and language minorities in the state's legislature and congressional delegation, and my hope today is this progress will continue.

My fear is that the new redistricting standards before you today endanger the progress we have made. Now that our constitution contains a requirement for districts to be "geographically compact" and "follow political boundaries where feasible," it seems quite possible that several minority crossover districts may fall victim to these new standards.

Please understand that majority-minority districts sometimes are not compact. Take for example Senate District 29, which stretches from Ft. Lauderdale to Riviera Beach. This district may not look pretty, but it is ensuring that the minority citizens of Riviera Beach have the chance to elect a candidate of their choice. If this particular district was cut any other way, the ultimate result would silence the voice of these citizens, a result which isn't good for our county. If I may, I would like to point out there are still disparities with our House delegation. African-American residents in neighborhoods such as Lake Worth, Lantana, Boynton & Delray Beach do not have the chance to elect a candidate of their choice in the House so I would urge you to rectify this situation as allowed under federal law.

In closing, my purpose today is to remind you to **preserve minority access districts in Palm Beach County and throughout Florida.** We have come too far to see the vague new standards which are open to much interpretation roll back the progress we have made in this state. We have worked too hard for too long to allow for this to happen. Please continue the work we have accomplished together, Republicans and Democrats, over the last 30 years. **Please, make it your number one priority to preserve minority access seats in South Florida.**

Submission from Hugh Brown

FERRIN.JAY

From: H. Brown [hb3003@gmail.com]
Sent: Saturday, August 20, 2011 10:19 AM
To: MyDistrictBuilder
Subject: Redistricting Process

Legislators,

Thank you for letting me comment on the redistricting process - I appreciate you taking my comments ahead of creating new district boundaries. I'm Hugh Brown, and I live in Boynton Beach in Palm Beach County.

As an African American, I want to make sure that my voice and the voice of others in my community is heard fairly at all levels of government. In Boynton Beach, the African American community has the ability to elect candidates of our choice to all levels of government except the State House of Representatives.

I don't think it makes sense that the African American community in Boynton Beach, Delray Beach, Lantana, and other neighboring towns can elect candidates of our choice to the County Commission, the State Senate, and the US Congress, but not the Florida House. This omission prevents our community from truly being empowered, and I ask that you please fix this when you draw the new lines and allow us to elect a candidate of our choice to the Florida House. Our community is very important in these areas of Palm Beach County, and we have unique needs that must be represented at all levels of government. I believe if you fix this problem, African Americans in neighborhoods like Boynton Beach and Delray Beach will truly feel empowered.

Again, I ask that you allow African Americans in the communities that I mentioned to elect a candidate of our choice to the State House and preserve our ability to do so at all other levels of our government, from the county to the State Senate to Congress.

Sincerely,

Hugh Brown

--

Thank you,

The H. Brown

hb3003@gmail.com

"There are no secrets to success. It is the result of preparation, hard work, and learning from failure."

-Colin Powell-

Submission from Kristine deHaseth



Please Provide Completed Form To:
 Legislative Staff at the Meeting.
 or
 Email to: mydistrictbuilder@myfloridahouse.gov
 and redistrictflorida@flsenate.gov.
 or
 Fax to (850) 487-6413



Florida Redistricting Suggestion Form

By submitting this form, I acknowledge that my comments and suggestions may be displayed on www.floridaredistricting.org and www.flsenate.gov/redistricting or other public websites maintained by the Florida Legislature. Note: the entirety of this form is public record.

*Field is required.

Prefix _____ *First Name Kristine *Last Name de Haseth Suffix _____
 Organization Name (If applicable) FL Coalition for Preservation
 *Your Address 235 NE 6 AVE *City Delray Beach *State FL *Zip 33483
 Your County Palm Beach Your Email Kristine@preservationfla.org
 *What type of map are you commenting on? Congressional State House State Senate
 *Would you like to receive email updates regarding Florida Redistricting? Yes No

Please provide detailed comments regarding your redistricting suggestion or request.

(Over)

www.floridaredistricting.org www.flsenate.gov/redistricting

Redistricting 2012

Good Morning. Thank you for the opportunity to speak today and I applaud your efforts to involve the public in such an important decision.

My name is Kristine de Haseth. I am a homeowner in Ocean Ridge, a small beach front community in House District 87 and Senate District 25. I am active in the community as a member of the local Garden Club, the Women League of Voters, the Florida Coalition for Preservation and on the board of a resident owned, old Florida beach Club. When issues arise, as they always do, local and state legislators have been key to providing information, guidance, resources and support.

There are many unique issues that face coastal communities and residents on barrier islands that are not shared by other County residents. By creating and maintaining a contiguous district of coastal communities, it affords representatives to have an in-depth knowledge of coastal issues and become a champion of this important state resource.

As the first round of public input draws to a close, I would encourage that maps be top priority in the upcoming legislation. Public input without knowledge of the final proposed maps is important but not complete. Please allow ample time for public input once the maps are release.

Thank you for your attention.

Submission from Dianne Douglas DeWolfe

FERRIN.JAY

From: Dianne DeWolfe [dddew91843@aol.com]
Sent: Sunday, August 14, 2011 5:24 PM
To: MyDistrictBuilder
Subject: Dis 22

As I'm having surgery, unable to attend the 8/16 redistricting meeting. Please keep the coastal district districts intact. We have concerns that are similar especially about being prepared for hurricanes and quick repair after hurricanes.

Dianne Douglas DeWolfe
561-512-7104
Palm Beach Gardens, Florida
Sent from my iPad

FERRIN.JAY

From: Dianne DeWolfe [dddew91843@aol.com]
Sent: Sunday, August 14, 2011 6:31 PM
To: FERRIN.JAY
Subject: Re: Redistricting Public Hearing in Boca Raton

Follow Up Flag: Follow up
Flag Status: Completed

Due to upcoming spine surgery I will not be able to attend. Please keep fl 22 a coastal district. We need someone who can quickly react to hurricane help. I also worked hard for Allen West to be my congressman and I want him to stay my congressman!!

Dianne Douglas DeWolfe
561-512-7104
Palm Beach Gardens, Florida
Sent from my iPad

On Aug 12, 2011, at 4:04 PM, FERRIN.JAY <FERRIN.JAY@flsenate.gov> wrote:

Dear Dianne DeWolfe:

Thank you for registering to attend the public hearing in Boca Raton on Tuesday, August 16th, starting at 10:00am at Florida Atlantic University. We look forward to hearing from you about new congressional, state senate, and state house maps that will work for your communities and meet requirements of federal and state law.

If you need directions or parking information, please visit our [Public Hearings](#) web page. If you need special accommodations, please notify the Senate Sergeant at Arms at (850) 487-5224.

The House and Senate websites are packed with information about redistricting in Florida. Visit www.flsenate.gov/Session/Redistricting and www.floridaredistricting.org to learn more about how you can participate in the most open, transparent, and interactive redistricting ever.

Sincerely,

Will W. Weatherford, House Redistricting Committee Chair

Don Gaetz, Senate Reapportionment Committee Chair

Submission from Jessica Dornblasu



Please Provide Completed Form To:
Legislative Staff at the Meeting.

or
Email to: mydistrictbuilder@myfloridahouse.gov
and redistrictflorida@flsenate.gov.

or
Fax to (850) 487-6413



Florida Redistricting Suggestion Form

By submitting this form, I acknowledge that my comments and suggestions may be displayed on www.floridaredistriking.org and www.flsenate.gov/redistricting or other public websites maintained by the Florida Legislature. Note: the entirety of this form is public record.

*Field is required.

Prefix _____ *First Name Jessica *Last Name Dornblasu Suffix _____

Organization Name (If applicable) _____

*Your Address 136 Michigan City Boca Raton State FL *Zip 33487

Your County _____ Your Email jessica.dornblasu@gmail.com

*What type of map are you commenting on? Congressional State House State Senate

*Would you like to receive email updates regarding Florida Redistricting? Yes No

Please provide detailed comments regarding your redistricting suggestion or request.

stop the jerry mandering!
Rep. are supposed to Represent based
on geography not party.

Submission from Annette Evans

Comments from Annette Evans, 3422 Pine Haven Cir,
Boca Raton (zip 33431)

- I heartily endorse the comments ^{made by} ~~the~~ the following:

- Mr. Joseph (Caribbean Assoc.)
- Joan Karp
- Florence (From AFT)
- Corinne Miller
- Margie Walden
- Susan Bucher
- woman from NAACP
- Patricia O'Connor
- Pam Goodman
- Kara Capp

Legislators should realize that illogically-shaped districts make their jobs more difficult.

The staff of the re-districting website are professional and I appreciate them.

- The timeline you have established ensures that incumbents will benefit. This means the will of the people is not being carried out (the 63% who voted for Amendments 5 + 6).
- Some ~~at~~ have said public participation means allowing citizens to submit maps. Actually, historically, governmental public hearings present a plan for citizens to review and comment on. The legislature should have produced 2 or 3 maps for the public to comment on.
- Partisan line-drawing marginalizes moderate voters, which exacerbates our fractured politics.
- Eliminating gerrymandering is important to maintaining true democracy. Not having geographically cohesive, contiguous districts disenfranchises voters.
- I am offended that Rep. Bill Hager left the dais for much of the hearing, and when he was there, he appeared to spend most of the time reading a magazine.
- The emcee was sarcastic to Rick Neuhoff.

Submission from Peter Feaman

TESTIMONY BEFORE REDISTRICTING MEETING

Self Intro.

Name, city, occupation, lived and worked in eastern Palm Beach County for last 28 years.

I'm not here to criticize, complain or posture. Why would I say that?

I've ~~seen~~^{heard} the League of Women Voters website where they posted talking points for these hearings. ~~It~~^{she} demands you produce maps now. ~~It~~^{they} criticizes the process. That's posturing. It was the League of Women Voters itself that first publicly proposed maps 10 years ago. It's in the redistricting archives of the Florida Senate. ^{BUT} Now they won't propose maps.

With Amendments 5 and 6, you must take public input first because the wording of these Amendments is so difficult to comprehend – such as “existing political boundaries” and “compactness.”

Why the change of position by the League? It's because Amendments 5 & 6 are so subjective they don't want to show their hand – or plans – yet they want the House and Senate to go first, so they can play “Gotcha!”

The only fair way to do this is to take public input first.

^{got} But, honestly, in today's political climate, there will be no map you can pass that will satisfy these critics.

They will file lawsuit after lawsuit until they can find a court to draw these maps, rather than you, our elected officials.

It's a shame that a group once founded on the principal of civic participation is not taking advantage of these public hearings to talk about specific ideas on how to redraw our legislative and congressional districts, but instead, show up just to criticize the process. A process they had no problem with 10 and 20 years ago.

Well, I do have specific suggestions for this geographical community of Palm Beach County.

Two Points:

1. There is no question that in Palm Beach County there are 2 distinct economic communities.

AGRICULTURE drives the economy in the western half of the county.

The BEACH communities drive the economic engine east of the Florida Turnpike. 2 distinct economic concerns.

Our maps should keep our Eastern beach communities whole, as they have similar economic interests. And our Western agriculture communities should be connected to others of the same interest in South Florida.

2. In addition to diverse economies here, we have a diverse population.

Our African-American neighbors in Riviera Beach, Pahokee, Belle Glade and South Bay are all now represented by a minority-majority district in the House. I know you cite ^{on your website} Sections 2 & 5 of the Federal Voting Rights Act as a consideration. These communities should remain united.

In conclusion, ignore the critics who make no suggestions of their own, finish your listening tour and do your best to draw maps that will best serve ALL Floridians, not political interest groups.

Thank you.

PETER M. FEAMAN, P.A.
Strategic Counselor, Political Advisor

1615 W. Boynton Beach Blvd.
Boynton Beach, FL 33416
Tel: 561-734-5552
Fax: (561) 734-5554
pfeaman@feamanlaw.com
Beach Office:
7900 Glades Road, Suite 330
Boca Raton, FL 33434



PETER M. FEAMAN, P.A.
www.feamanlaw.com

Submission from Robert Ganger



Please Provide Completed Form To:
 Legislative Staff at the Meeting.
 or
 Email to: mydistrictbuilder@myfloridahouse.gov
 and redistrictflorida@flsenate.gov.
 or
 Fax to (850) 487-6413



Florida Redistricting Suggestion Form

By submitting this form, I acknowledge that my comments and suggestions may be displayed on www.floridaredistricting.org and www.flsenate.gov/redistricting or other public websites maintained by the Florida Legislature. Note: the entirety of this form is public record.

*Field is required.

Prefix _____ *First Name Robert *Last Name Ganger Suffix _____
 Organization Name (If applicable) FL Coalition for Preservation
 *Your Address 235 NE 6 AVE *City Delray Beach *State FL *Zip 33483
 Your County Palm Beach Your Email rwganger@bellsouth.net
 *What type of map are you commenting on? Congressional State House State Senate
 *Would you like to receive email updates regarding Florida Redistricting? Yes No

Please provide detailed comments regarding your redistricting suggestion or request.

3 minute Draft Redistricting Remarks

My name is Robert Ganger. I am speaking on behalf of the Florida Coalition for Preservation, a local non-profit corporation, headquartered in nearby Delray Beach.

Our Mission is to champion responsible development on Florida's barrier islands and coastal communities. We are an apolitical organization, concerned primarily with preserving the fragile land and marine environment on the state's shorelines, and enhancing the quality of life for millions of people who enjoy our fabulous beaches and waterways.

I am here today to propose that the legislature make *no major changes* to Senate District 25 and House District 87 as part of the 2012 redistricting process.

Your Website indicates that one of the principles guiding definition of a "compact" district is (quote)...*"how the communities relate to one another...in order to promote the creation of effective representational units"* (end quote).

As a practical matter, there are close to 20 individual jurisdictions fronting the ocean in Senate District 25, including seven individual jurisdictions within House District 87.

Our Coalition is focused primarily on a handful of these jurisdictions spanning about a dozen linear miles of oceanfront ---Delray Beach, Gulf Stream, Briny Breezes, Ocean Ridge, Manalapan, Lantana and a sliver of Boynton Beach and Lake Worth. These municipalities increasingly want to work together to deal with *shared issues that are unique to coastal communities*---and particularly to populations located on the barrier island and near the intracoastal waterway.

These are issues that no one community can solve individually. They include beach erosion and renourishment; coping with rising sea levels; hurricane evacuation and storm remediation; access to potable water; curbing treated sewage outflows ; maintaining a healthy dune and marine environment; providing adequate infrastructure and recreational facilities, and on and on.

Public interest groups, such as the Florida Coalition, are working with *each* of the individual coastal communities in hopes of creating multi-jurisdictional Master Plans to address common issues. In turn, we expect the coordinated support of State elected officials and departments, to help us protect our coastline— unquestionably one of Florida’s most important state resources.

The beauty of current local districting is that it does provide an efficient and effective mechanism for citizens living on the coastline to be represented in State Government. Protecting the coastline is not a party issue—we just need a handful of key legislators whose highest priorities include keeping a watchful eye on the health of our waterfront resources.

Please consider the unique needs of coastal communities when reapportioning legislative districts, both here in South Florida and elsewhere in the state.

And one final word. Please assure our citizens that proposed redistricting maps are available for public comment well in advance of the next legislative session. The last thing we want to do is run to Tallahassee at the final hour, only to find that it is too late to plead our case.

Thank you.

480

Aug 16, 2011

Submission from Susan Haynie

Redistricting Comments – Susan Haynie, Boca Raton Deputy Mayor August 16, 2011

Good Morning Representatives, Thank you for the opportunity to address you today on the important issue of redistricting.

My name is Susan Haynie. I am a native Floridian and a 40-year resident of Boca Raton. Although I have the honor to serve as the Deputy Mayor of the City of Boca Raton, I am speaking this morning as an individual who has had the privilege and honor of serving as an elected official in this wonderful community since 2000. Welcome to our beautiful and vibrant city.

I would share two issues with you:

First Issue - The majority of the City of Boca Raton is within House District 87 with areas in the Northwest located with House District 86. A small portion of Southeastern Boca Raton, which abuts the Palm Beach County/Broward County line, is currently in District 91. These Boca Raton residents are not being adequately represented by a Broward-based Legislator who has limited interaction with the entities serving them such as: Palm Beach County: Commission, Tax Collector, Property Appraiser, Supervisor of Elections, League of Cities, Metropolitan Planning Organization, School District, and Health District; Lake Worth Drainage District, City of Boca Raton, The Greater Boca Raton Beach and Park District and the Treasure Coast Regional Planning Council.

Please place all of southeastern Boca Raton in Palm Beach County-based District 87.

Second Issue - The Coastal communities within Palm Beach County are truly communities of interests with separate needs and concerns from the rest of Palm Beach County. The unique attributes that define these coastal communities fall into three categories:

Barrier Island Issues –

Our barrier island communities have unique environmental concerns requiring strong knowledgeable representation at the State and Federal levels. Issues regarding beach re-nourishment, dredging, inlet management, dune preservation, sea turtle and manatee protection programs, disaster planning and evacuation issues must constantly be addressed with advocacy and funding.

North-South Transportation Corridors (railroads,waterways,roads)–

Our coastal communities share two railroads, the FEC and CSX, and the issues surrounding them such as safety concerns, railroad crossings, train horn issues, station placement and redevelopment opportunities; The Intracoastal Waterway connects our coastal communities with its unique issues surrounding boating safety and signage, bridge/waterway and canal issues and inlet management; Our vital north/south roadway corridors, A-1-A, Federal Highway, Dixie Highway, I-95 present multiple issues surrounding providing services for these important transportation systems. Safety, maintenance, multi-modal planning, signals, signage and traffic flow as well as issues surrounding our first responders and working with the FDOT for vital funding requires strong and knowledgeable representation at the State and Federal level.

Governance/Development Patterns/Downtowns/Insurance Issues –

The coastal communities of Palm Beach County are all incorporated municipalities which provide a system of local governance for our State and Federal representatives to interact with. Coastal Palm Beach County is fully developed with multiple downtowns sited along our historic transportation corridors. Infill redevelopment, and the challenges it places on our existing infrastructure, is the future development pattern of our coastal communities which is a vastly different development pattern than that of our western areas. Property insurance issues for properties located east of I-95 continue to be a challenge for our coastal communities and require strong and knowledgeable representation at the State and Federal level.

I respectfully request that you give consideration to the aforementioned special and unique attributes of the coastal communities of Palm Beach County and that they be kept together as communities of interest as you redefine our districts.

Thank you for the opportunity to address you this morning.

Submission from Linda Johnson

LINDA JOHNSON Vice President

Florida State Conference NAACP
Palm Beach County Talking Points

The state of Florida should ensure transparency, fairness, and compliance with the Voting Rights Act and with Equal Protection.

- You should ensure "one person one vote."
- You should redistrict in a way that avoids minority vote dilution.
- You should avoid drawing district lines so that the minority population is over-concentrated or "packed" into election districts.
- You should also be careful to avoid *cracking* (or "fracturing")—drawing district lines so that an area of concentrated minority population, is divided and spread among several districts that are predominantly white.
- You should be careful to avoid *stacking*—drawing district lines so that a large minority population concentration is included with a larger white population with the purpose or effect of depriving minority voters of a voting majority.
- We also respectfully request that you avoid drawing plans that erode minority rights relative to the status quo—that is that you avoid creating retrogressive redistricting plans.

A key traditional redistricting principle is respect for communities of interest.

- These are defined by three characteristics:
 - the extent to which non-members identify members as a distinct community;
 - the extent to which members identify themselves as a distinct community; and
 - the extent to which members are similarly affected by governmental action.
- African-American citizens form one of the strongest communities of interest in the state and the redistricting plan should have as a priority the fashioning of districts that accord appropriate representation to communities of interest.

We are aware of and request adherence to the redistricting principles outlined in sections 20 and 21 of the Florida Constitution.

- "Districts shall not be drawn with the intent or result of denying or abridging the equal opportunity of racial or language minorities to participate in the political process or to diminish their ability to elect

Florida State Conference NAACP
Palm Beach County Talking Points

representatives of their choice." In addition, districts shall be compact and contiguous.

•
Palm Beach County Redistricting Data

- In Palm Beach County, by 2010, the black voting age population was 159,187; an increase of approximately 67 percent. The Hispanic voting age population was 180,155; an increase of approximately 81 percent.

Voting Age Population Data

<u>Race/Ethnicity</u>	<u>2010</u>	<u>Percentage*</u>	<u>2000</u>	<u>Percentage*</u>
Black	159,187	15.1%	180,155	17.1%
Latino	98,342	11%	99,253	11.1%

*Percentages are of the county's voting age population

Map Production by precinct and Voting Age Population

- In producing the data for the maps, we ask that you include precinct and district Voting Age Population (VAP), disaggregated by race and national origin. We ask that the data also include VAP of citizens who can vote.

Finally, we find the absence of prospective maps at redistricting public meetings very troubling.

- The ability to offer substantive comments is severely diminished without the presentation of maps at these public halls. We ask that an additional set of meetings is established throughout the state in order to allow for effective comment on the proposed maps.

Submission from Mike Jones



August 14, 2011

Talking Points, Mike Jones, President and CEO

August 15 and 16 redistricting hearings in Stuart and Boca Raton

I am the President and CEO of the Economic Council of Palm Beach County, Inc. The EC is non-partisan, non-profit organization promoting policies that create an environment in which business can prosper. The EC is a countywide organization of owners and CEOs of large, medium and small employers representing every industry sector and geographical area. I have been a resident of North Palm Beach for over 10 years.

- I have reviewed the redistricting guidelines and found them to be very confusing and contradictory. I sympathize with legislators who must finally decide and applaud your efforts to hear from the public.
- Thanks to the Legislature for listening to citizens first before producing maps.
- I also commend the Legislature for an open and transparent process that allows citizens to submit their suggestions.
- The growth of Palm Beach County (16.7%) has nearly matched that of the State (17.7%) and justifies consideration to maintain fair representation for our County in the Legislature and Congress.
- Palm Beach County is larger than some other "regions" of the State composed of multiple counties. Almost 60% of the population resides within incorporated areas.
- Even though we are one of the largest counties in land area east of the Mississippi, larger than some states, and even though our diverse population is dispersed in 38 cities and towns, we do have "communities of interest with common concerns" which can be grouped geographically.
- These communities of interest can rationally be divided, for example, geographically among the northern population centers (Juno, Jupiter, Lake Park, North Palm Beach, Palm Beach Gardens, Tequesta), the central county (Greenacres, Lake Worth, Lantana, Palm Springs, West Palm Beach), the south county (Boca Raton, Boynton Beach, Delray Beach), the western communities (Loxahatchee Groves, Royal Palm Beach, Wellington,) and the Lakes-Glades region (Belle Glade, Pahokee and South Bay).
- A large percentage of the population within our very large County resides within 10-15 miles of the coast.
- While the FEC corridor, I-95 and the Turnpike serve as north-south connectors for communities of interest, they also provide natural division boundaries between the east and west.
- Much of the County's organic growth continues to move northward toward the Treasure Coast as evidenced by the establishment of Scripps and Max Planck on the FAU-Abacoa campus and Torrey Pines in St Lucie County.
- These points of connectivity in the northern portions of the Treasure Coast must be counterbalanced with the recognition that the new FAU medical school on the Boca Raton campus has launched a joint PhD program with the Scripps Institute to the north.

Thank you for the opportunity to comment.

1555 Palm Beach Lakes Boulevard, Suite 950
West Palm Beach, Florida 33401
Telephone: (561) 684-1551 ♦ Facsimile: (561) 689-7346

Submission from Mrs. Robert Kotecki

From: bkotecki@comcast.net
To: [MyDistrictBuilder](#);
Subject: Please keep Congress FL House (8) (FL 22) and the 3 and 25) districts the same
Date: Tuesday, August 16, 2011 1:14:32 PM

To Whom It May Concern:

I moved to Miami with my family in 1956.

I am a graduate of the University of Florida.

Since 1976, I have resided with my husband in coastal northeast Palm Beach County where our 3 sons were born & raised.

Currently we reside in Palm Beach Gardens on the Intracoastal.

It is imperative that our districting reflect the coastal area, since the needs & challenges of western Palm Beach County are totally different from the coastal area.

It would be irresponsible to lump all of the county together or redistrict based on northern & southern considerations, since the different interests would not be fairly represented.

Please keep Congress FL House (8) (FL 22) and the 3 and 25) districts the same.

Thank you for considering the interests of those of us who live here fulltime!

Sincerely,

bkotecki@comcast.net

Mrs. Robert Kotecki

561-627-2422

Submission from Steven Laine

Redistricting... Public Hearing, FAU, Tues. Aug. 16

Steven Laine... Full time resident: 1978

A displaced prune picker... little bit wrinkled...

Former Asst. to the Secy. USDA, DC

Worked in DC 3 days, President quit.. Ford in my F.

37 years ago last week... Gerald Ford became Pres.

**A great deal has changed in the following years and
the results have been mixed...**

**Been active in civic groups in the community...
and church related activities... PDG Rotary Int...
Currently S. FL Sub Base Cdr. Live in a condo and
am a Board member as well as Govt. Liaison for our
condo as well as the BHA, Boca Highland Beach
Condo Assoc. which comprises of 62 condos along
A1A from the PBC line to the south and the North
end of Highland Beach. Approx. 10K condo
residents make up the resident population.**

**BHA interest range from Beach Renourishment to
Fire Alarm Issues as well as Sea Grape issues ^{CHALLENGE}
which block views of the ocean from some
properties... Contacts are maintained at the local,
county, state and Federal level with agencies which
impact these and other issues.**

**BHA is vitally Interested in Redistricting: Want to
thank you for holding these 25 plus hearings thru
out Florida**

Has to be a real grinder... *Florida*
Looking at the districts reminds me of:

The Rorschach Inkblot test. You know, a psychologist shows the patient an inkblot and asks what the patient sees in it ... and every patient sees something different. We each look at the district and see it from different perspectives.

The analogy is there for us to consider.

ReDistricting is not a pretty picture and has lots of issue consequences as we are all aware. As previously indicated, everyone has a different concept of its meaning...

My district 91 has special interests in the beaches of our communities... Our immediate district (87) to the north of us is analogous in some respects... *As indicated*
With Distr. 91 having just six or so precincts in PBC and the remainder in Broward County, it seems a bit contrived for both districts for many reasons... *there*

Having been exposed to AG a bit, I look at other central FL districts which really look like ink spots... And I understand the rural nature of the land and the lack of habitation and *what* problems insue in *the* districting... *Re*

A real challenge to retain some continuity and to be representative in large geographical areas. As an example and one close to home just west of us is... District # 78, really a challenge to cover and serve constituents.

Perhaps the Inkblot test should be reviewed and a

hard look at what you/ and we are really trying to achieve be the objective of this difficult undertaking and exercise... to be fair to all concerned and to build goodwill and better relationships for everyone!

Thanks for taking the time to let me share with you a few of my thoughts and again for all you do to make it possible for all of us to enjoy the wonderful place the Good Lord has created. *FLORIDA*

God Bless You All!

Submission from David Lewin

Florida State Legislature Redistricting Palm Beach County

I'm pleased to submit for consideration and discussion, the following simple suggestions for redistricting Palm Beach County (PBC) representation in the Florida State Senate and House of Representatives:

I would propose that after the 2010 redistricting process, in accordance with Fair District amendments 5 and 6. PBC be represented by three (3) Florida State Senators. PBC is currently partly represented by five (5) Senators.

I would propose that after redistricting, there should be nine (9) PBC House of Representatives. There are currently eleven (11) Representatives partly representing PBC.

I base these suggestions on the following facts:

Senate

Florida 2010 census total population of 18,801,310 divided by 40, the total Senate districts, means that each Senate District would consist of a population of 470,033, (current district population 399,559). PBC 2010 census total population of 1,320,134, divided by 470,033 should mean that the County would have 2.81 Senators. If Deerfield Beach, Broward County, population were included, PBC would have three State Senators.

I would suggest that redistricted Senate district boundaries are drawn much along the lines of current boundaries for Districts 25, 29, and 30, and incorporate the PBC areas currently represented by districts 27 and 28.

House

Florida total population 18,801,310 divided by 120 the total House districts, means each House District would represent a population of 156,678, (current district population 133,186). PBC population of 1,320,134, divided by 156,678 should mean that PBC would have 8.43 Representatives. If Deerfield Beach, Broward County, population were included, PBC would have 9 House Representatives.

I would suggest that redistricted House district boundaries are drawn much along the lines of current boundaries for districts 78, 83, 84, 85, 86, 87, 88, 89, and 90, and incorporate the PBC areas currently represented by districts 82 and 91.

Message

You replied on 7/11/2011 7:23 AM.

From: David Lewin [dlew@comcast.net] Sent: Sun 7/10/2011 5:12 PM
 To: MyDistrictBuilder
 Cc:
 Subject: Redistricting Palm Beach County FL State Senate

According to <http://www.flsenate.gov/Senators/Districts> there are currently 5 senators whose districts include parts of Palm Beach County :

FL Senate District (40 total)	Incumbent	District Population (2000)	Note
25	Elyn Bogdanoff	399,580	Keep PBC Lose Broward? Rural
27	Lizbeth Benacquisto	399,568	Lose PBC? Take Hendry?
28	Joe Negron	399,573	Lose PBC?
29	Chris Smith	399,534	Keep PBC Add Deerfield Beach Broward? Coastal
30	Maria Sachs	399,553	Keep PBC Lose Broward? Suburban

Palm Beach County Pop. 2000	1,131,184	
Palm Beach County Pop. 2010	1,320,134	
Florida Population 2000	15,982,378	399,559
Florida Population 2010	18,801,310	470,033
		2,808,600

Each senator represents a population of about 399,500, based on 2000 census figures. (of the district population of 399,500, there were 330,694 of voting age)

Florida state has a population of 18.8 million, according to the 2010 census, basis for the 2010 redistricting. There are 40 senators in the state legislature. 18.8 mil (population) divided by 40 (senators) comes to 470,000 population per senate district (vs current 399,500) and 2.81 senators for Palm Beach County. (2010 census population 1.32 million) It is my understanding that Amendment 5 requires senate districts (40) to be in line with governmental bounderies, like county lines. Amendment 6 has the same requirement for the representatives (120)

If neighboring Deerfield Beach (contiguous Broward county) population were added to Palm Beach county population, Palm Beach county should end up with 3 senators and the main question would be should they be E/W oriented or N/S? Should each district include a coastal portion? The consensus seems to be N/S to provide representation for the coastal area, suburban and rural areas for each district. The demographics presented at <http://www.flsenate.gov/Senators/Districts> don't seem to indicate a requirement for minority considerations. Delray Beach, Boca Raton and Deerfield Beach are considered 'sister' cities, and I'm unaware of a similar relationship in contiguous Northern Palm Beach County.

Respectfully submitted for your consideration,

David Lewin

Redistricting Palm Beach County FL State House of Representatives - Message (HTML)

You replied on 7/13/2011 12:16 AM

From: David Lewin [dlew@comcast.net] Sent: Mon 7/11/2011 1:14 PM
 To: Kelly, Alex
 Cc:
 Subject: Redistricting Palm Beach County FL State House of Representatives

There are currently 11 representatives whose districts include parts of Palm Beach County:

FL House District (120 total)	Incumbent	District Population (2000)	Deviation	Note
78	Steve Penman	132,858	-328 -0.2%	Keep PBC Lose Martin
82	William Snyder	133,132	54 0.0%	Lose PBC Keep Martin
83	Patrick Rooney	133,850	664 0.5%	Keep PBC
84	Mack Bernard	132,198	-988 -0.7%	Keep PBC
85	Joseph Abuzzo	132,080	-1,106 -0.8%	Keep PBC
86	Lon Berman	133,526	340 0.3%	Keep PBC
87	Bill Hager	133,861	675 0.5%	Keep PBC Lose Broward
88	Mark Pafford	134,078	892 0.7%	Keep PBC
89	Jeff Clemens	133,810	624 0.5%	Keep PBC
90	Irv Slosberg	134,668	1,482 1.1%	Keep PBC Lose Broward
91	George Moraitis	132,744	-442 -0.3%	Lose PBC Keep Broward

Palm Beach County Pop. 2000	1,131,184		
Palm Beach County Pop. 2010	1,320,134		
Florida Population 2000	15,982,378	133,186	
Florida Population 2010	18,801,310	156,678	8.425800117 Representatives

Each representative represents a population of about 133,000, based on 2000 census figures.

Florida state has a population of 18.6 million, according to the 2010 census, basis for the 2010 redistricting. There are 120 representatives in the state legislature. 18.6 mil (population) divided by 120 (representatives) comes to approx. 156,700 population per district (vs current 133,000) and 8.43 representatives for Palm Beach County, (2010 census population 1.32 million). It is my understanding that Amendment 5 requires senate districts (40) to be in line with governmental boundaries, like county lines. Amendment 6 has the same requirement for the representatives (120).

If neighboring Deerfield Beach (contiguous Broward county) population were added to Palm Beach county population, Palm Beach county should end up with 9 representatives and the main question would be should they be E/W oriented or N/S? Should each district include a coastal portion? The consensus seems to be N/S to provide representation for the coastal area, suburban and rural areas for each district. Delray Beach, Boca Raton and Deerfield Beach are considered 'sister' cities, and I'm unaware of a similar relationship in contiguous Northern Palm Beach County.

Respectfully submitted for your consideration,

David Lewin

Submission from Margaret Mackey



Please Provide Completed Form To:

Legislative Staff at the Meeting.

or

Email to: mydistrictbuilder@myfloridahouse.gov
and redistrictflorida@flsenate.gov,

or

Fax to (850) 487-6413



Florida Redistricting Suggestion Form

By submitting this form, I acknowledge that my comments and suggestions may be displayed on www.floridaredistricting.org and www.flsenate.gov/redistricting or other public websites maintained by the Florida Legislature. Note: the entirety of this form is public record.

*Field is required.

Prefix MS *First Name Margaret *Last Name Mackey Suffix _____

Organization Name (If applicable) rep of self

*Your Address 3930 Sacred Blvd. *City Lantana *State FL *Zip 33462

Your County Palm Bch Your Email mackmg11@aol.com

*What type of map are you commenting on? Congressional State House State Senate

*Would you like to receive email updates regarding Florida Redistricting? Yes No

Please provide detailed comments regarding your redistricting suggestion or request.

8-16-2011 -- I submitted 3 maps and gave them to a rep. of the Chair of this meeting

1. Congressional, State Rep and State Senate maps are based on the items of transience of populations and all of the TV input I noted on Channel 42-4 State TV.

2. My personal interest is to make the Districts on my maps encompass the idea of these numbers I pointed on those maps as to numbers of reps etc -- so that the precincts could be set up keeping in mind the ethnic requests of congruity. The write-in ballot should be on each precinct voting machine.**

3. Also my thought is public transportation interests to reduce waste by having the Counties working together.

4. The differentiation of transience and death rate should balance the numbers required.

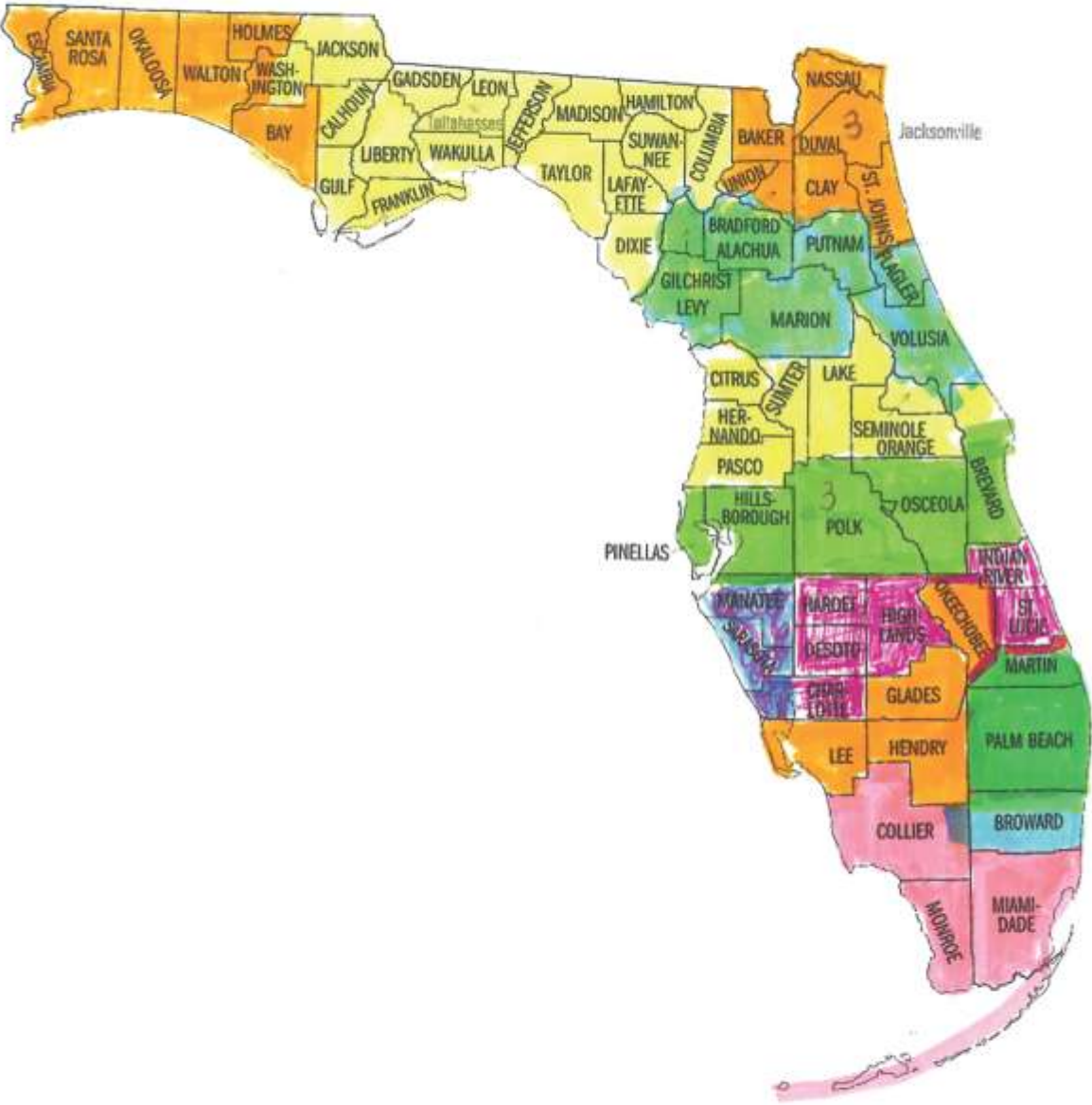
5. The Precincts are done by the new maps.

(Over)

www.floridaredistricting.org

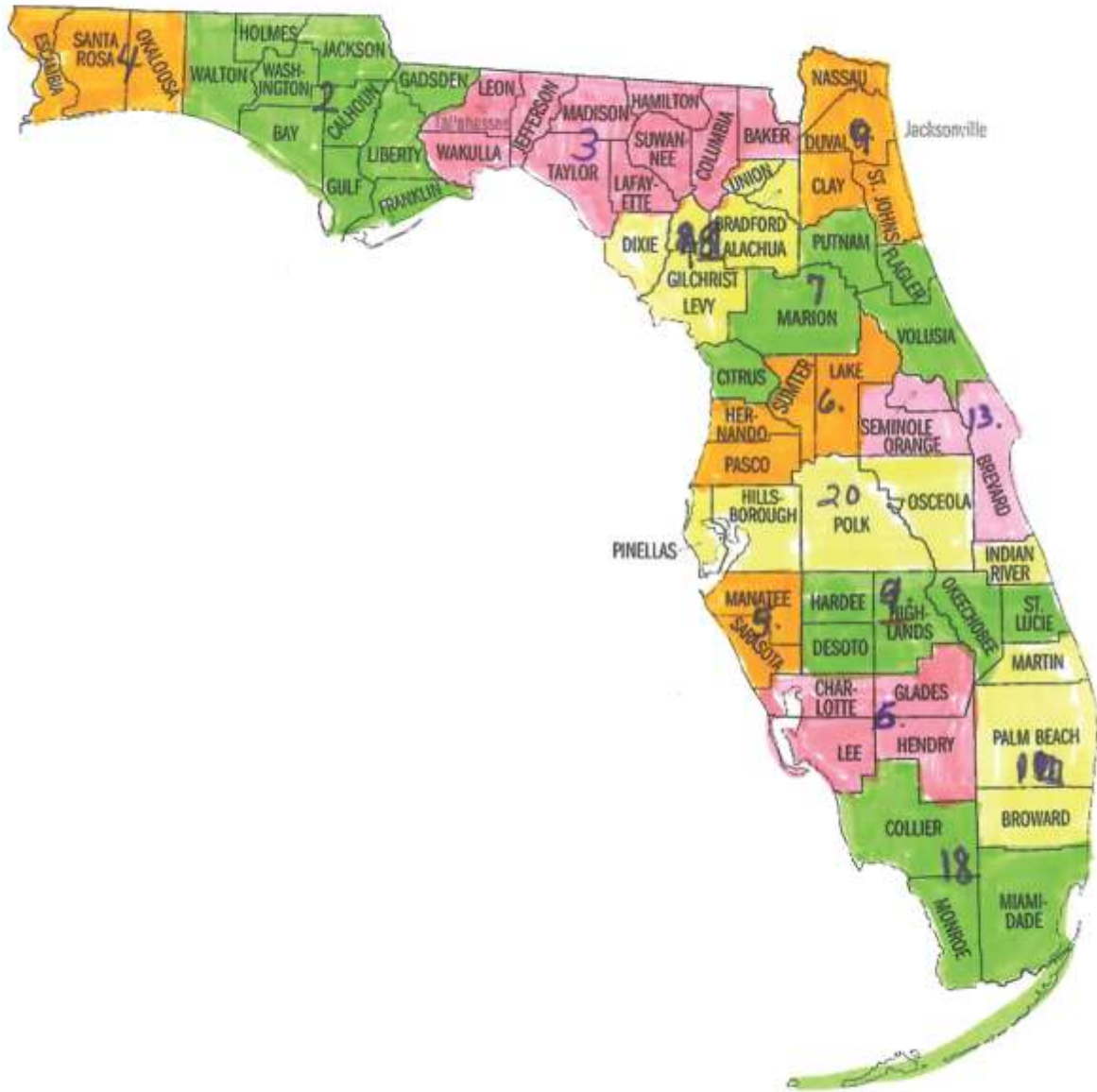
www.flsenate.gov/redistricting

FL CONGRESSIONAL DISTRICTS



Margaret Mackey

FLORIDA STATE REPRESENTATIVES



Margaret Mackey

FL SENATE



Margaret Mackey

Submission from Pat Magrogan

From: [Pat Magrogan](#)
To: [MyDistrictBuilder](#);
Subject: KEEPING DISTRICTS TOGETHER
Date: Tuesday, August 16, 2011 9:19:22 AM

Please keep Palm Beach County districts together for the protector of the residents and their assists.

Submission from Yolanda Mercedes

FERRIN.JAY

From: Yolanda Mercedes [latino77712@yahoo.com]
Sent: Monday, August 22, 2011 10:41 AM
To: MyDistrictBuilder
Subject: ATTN: Redistricting committee

ATTN: Redistricting committee

My name is Yolanda Mercedes, and I am a resident of 5245 Coconut Blvd 33411 in Palm Beach County Florida. Thank you for allowing me the opportunity to offer my input to the redistricting committee.

I'm writing today to speak for many Hispanics and other minorities who live in neighborhoods in The Acreage, Royal Palm Beach, Lake Worth, Lantana, Boynton Beach, Delray Beach, and other cities here in Palm Beach County. As our district lines are currently drawn, we have an opportunity to elect a candidate of our choice – a candidate that looks like us and that understands the needs of minorities in Palm Beach County – at the county level, at the State Senate level, and at the Congressional level.

But, at the State House level, something is wrong. At the State House level, minorities living in the neighborhoods I mentioned earlier are not empowered because we cannot elect a candidate of our choice with the way the House lines are drawn right now. I ask you to rectify this problem and draw State House lines that let Hispanics and other minorities have the same opportunities to elect candidates of our choice like we have at all other levels of government. Our community has many pressing and important needs, both economically and socially, that require representation in the State House from someone who understands and is a part of our community. Making this change will empower minorities locally and help us have a stronger voice in Tallahassee.

Thanks for the opportunity

Yolanda Mercedes-Flores
5245 Coconut Blvd
The Acreage-Royal Palm Beach.
Palm Beach , Fl. 33411
PH 561-594-9920

Submission from Howard Parmet

FERRIN.JAY

From: Marmaid12@aol.com
Sent: Sunday, August 14, 2011 3:42 PM
To: MyDistrictBuilder
Subject: Redistricting

To: the Florida Legislature
RE: Redistricting

Thank you for taking the time to receive input from citizens BEFORE drawing maps. I appreciate the legislature taking the time to listen to it's citizens.

Please consider the Palm Beach County coastal districts of FL 22, and FL state 25 and 83. They all are coastal communities and share similar concerns. They differ from the remainder of Palm Beach County. The concerns that they share include property insurance, hurricane preparedness, tourism, coastal erosion, and ports.

Thank you,
Howard Parmet
Palm Beach Gardens
25 year resident

Submission from Cynthia Plocelman



Please Provide Completed Form To:

Legislative Staff at the Meeting.

OR

Email to: mydistrictbuilder@myfloridahouse.gov
and redistrictflorida@flsenate.gov.

OR

Fax to (850) 487-6413



Florida Redistricting Suggestion Form

By submitting this form, I acknowledge that my comments and suggestions may be displayed on www.floridaredistriking.org and www.flsenate.gov/redistricting or other public websites maintained by the Florida Legislature. Note: the entirety of this form is public record.

*Field is required.

Prefix _____ *First Name CYNTHIA *Last Name PLOCELMAN Suffix _____

Organization Name (If applicable) Audubon Society OF THE EVERGLADES

*Your Address 30 FRANKLIN BL *City WPB *State FL *Zip 33405

Your County PALM BEACH Your Email C.PLOCELMAN

*What type of map are you commenting on? Congressional State House State Senate

*Would you like to receive email updates regarding Florida Redistricting? Yes No

Please provide detailed comments regarding your redistricting suggestion or request.

- ① OBEY the LAW - FAIR DISTRICTS ADMENDMENT
- ② DOES NOT MATTER IF SITTING ELECTED OFFICIALS HAVE TO IRUN⁴ AGAINST EACH OTHER!!
- ③ COMPACT, CONTIGUOS, IMPARTIAL - REQUIRED
- ④ DO NOT SEPARATE BY POLITICAL PARTIES
- ⑤ DO YOUR JOB, AS REQUIRED!
- ⑥ MAPS - FROM YOU IF BETTER DEFINITIONS NEEDED!

(Over)

www.floridaredistriking.org

www.flsenate.gov/redistricting

Submission from Bob Roath

FERRIN.JAY

From: Bob Roath [bobonsurf@gmail.com]
Sent: Friday, August 19, 2011 5:50 AM
To: MyDistrictBuilder
Cc: Marilyn Parmet; R G Russell
Subject: I appreciate your consideration of the following:

I am requesting the coastal districts of Palm Beach County to be kept together as these districts in Congress (FL 22) and the FL House (83 and 25) all share similar interests. They are coastal districts and are concerned about similar issues like hurricane preparedness, property insurance, tourism and beach erosion, to name a few. They differ in their concerns from the remainder of Palm Beach County.

Resident,

Bob Roath

--

Robert S. Roath
199 Regatta Drive
Jupiter, FL 33477
561 745-1644
203 858-8848 cell
bobonsurf@gmail.com

Submission from John Roberts



Please Provide Completed Form To:

Legislative Staff at the Meeting.

or

Email to: mydistrictbuilder@myfloridahouse.gov
and redistrictflorida@flsenate.gov.

or

Fax to (850) 487-6413



Florida Redistricting Suggestion Form

By submitting this form, I acknowledge that my comments and suggestions may be displayed on www.floridaredistricting.org and www.flsenate.gov/redistricting or other public websites maintained by the Florida Legislature. Note: the entirety of this form is public record.

*Field is required.

Prefix Mr. *First Name John *Last Name Roberts Suffix _____

Organization Name (If applicable) _____

*Your Address 6223 Pond Tree Ct *City Greenacres *State FL *zip 33463

Your County Palm Beach Your Email jrobarts@yahoo.com

*What type of map are you commenting on? Congressional State House State Senate

*Would you like to receive email updates regarding Florida Redistricting? Yes No

Please provide detailed comments regarding your redistricting suggestion or request.

I'm sitting in an auditorium at FAU. It's 11:30 AM and half way through the allotted 3 hours, and no one has mentioned the elephant in the room (or for that matter, the donkey). In this case, the elephant is more appropriate since the Republican Party dominates the political process and holds a solid majority in the legislature and constitutional offices. They have accomplished this despite the fact that there are 600,000 to 750,000 more registered Democrats in the state. How did they accomplish this majority position? In a word, it was gerrymandering. It looks like they plan to use this process once again to continue their success. The time schedule that has been set up is a disaster. It will probably lead to all incumbents being swept back into office, a reward that

(Over)

www.floridaredistricting.org

www.flsenate.gov/redistricting

many have not earned.

Please prove that this isn't true.

Change the timeline to one that will allow the 2012 elections to proceed logically and effectively.

Release the maps that have been drafted.

I don't think that anyone at this hearing really believes that these haven't been drafted.

If you make these changes and create districts that make sense, you will be seen as politicians who did the right thing.

Submission from Allen Robbins

The submissions received from Allen Robbins at the Boca Raton Public Hearing included letters, emails, pictures, talking points, and the copyrighted publications [“Redrawing the Map On Redistricting 2010: The Philadelphia Study”](#) and [“The Gerrymandering Index”](#).



I WANT YOU
TO DEFEND THE INTEGRITY
OF OUR ELECTION PROCESS.

We need your signature on our two petitions to protect against politicians from manipulating the system to preserve their own power and the dominance of one party over another.

Your signature will help end the political free-for-all and replace it with a system that requires natural fairness and competition in legislative and congressional elections.

SIGN TO FIX A BROKEN SYSTEM

Paid for by FairDistrictsFlorida.org

FAU REDISTRICTING HEARING –Tuesday 16 Aug. 2011

I'm here today to talk about the software MyDistrictBuilder the Senate District Builder and how it relates to Amendments 5 & 6.

There are three web base programs that are called District Builder the one that has Geospatial analysis is a national Public Mapping Project, which is a open-source redistricting application that supports both Amendments 5 & 6 language.

The other two Florida web based programs in have failed to include this vital component.

[\(http://www.azavea.com/research/company-research/redistricting-2010-whitepapers/\)](http://www.azavea.com/research/company-research/redistricting-2010-whitepapers/).

The state has been notified on several occasions.

A reply was sent back indicating that they would NOT include a “Show Plan Summary” and they did say, “We did not plan to include a compactness measurement tool.” We find this very unacceptable.

We know that “No mathematical formula is likely to adequately correct for all of the geographical and social variability that can result in irregular district shapes.” **However, when the authors wrote Amendments 5 & 6 they implicitly implied that the processes include a geometric measure of compactness as part of the process.**

When they say “you do not need Reock, Convex Hull, Polsby-Popper and Schwartzberg scores to know what makes sense for creating compact districts”. What they really mean is no one in court can challenge a subjective term it looks OK to me.

I did have a close look in the Agreement for Consulting Service Contract on how the MyDistrictBuilder was created.

In Attachment “A” a five-page document, which outlines what the program has to accomplish.

In MyDistrictBuilder Section Glossary the term Geospatial formula was also left out and it was also left out in the Senate Help section on Definitions.

Nowhere in Attachment “A” did it say that the program has to be compliant with Amendments 5 & 6. In fact it failed to mention the term Gerrymandering and how to prevent it from happening.

Both state programs are very basic map-drawing programs. It also looks like an end run around geometric calculations.

The people of Florida are fed up with the partisan politics from all sides, and now is the time to end the games.

We are requesting that both “Azavea white paper” and the “Redrawing the Map on Redistricting 2010 – The Philadelphia Study” be add to the states web page right next to The

Brennan Center For Justice which failed to explain the word “Gerrymandering”

We want fair districts drawn therefore we demand that MyDistrictBuilder and the Senate District Builder software be either fixed or replaced so the mandate of the people is followed to the letter of the law and to make sure the DOJ and the Florida Supreme Court have full access to geospatial analysis to measure relative compactness, which was a mandate from 3,150,000 plus people who voted for in Amendments 5 & 6.



Legislative Committee

May 5, 2011

To: Governor Rick Scott; Florida's State Senate; Florida's State House; Manuel Diaz, the Chairman of Fair Districts Florida and President Barack Obama.

In an overwhelming display of non-partisan voting, 63% of Florida's 2010 voters clearly spoke their mind to do away with highly partisan gerrymandering in an effort to have fair elections and redraw the electoral districts in a fashion coinciding with Florida State Constitution Amendments 5 & 6.

The purpose of Amendments 5 & 6 are to allow communities to remain cohesive and inclusive, for districts to be non-partisan, racially or economically skewed. That they should be compact, contiguous and grid-like except when that grid would divide a community, existing city, county or geographical boundary.

The Palm Beach County Democratic Party urges you to follow Amendments 5 & 6 to the literal letter of the law. There is no room for interpretation that could allow partisan gerrymandering to persist.

Further, the Palm Beach Democratic Party calls for Fair Districts Florida (as the authors of Amendments 5 & 6) to act as an independent, non-partisan committee to monitor and oversee the redistricting process to insure that the true intent of Amendments 5 & 6 are implemented.

Last week, the Florida House of Representatives – Congressional Redistricting Subcommittee had a hearing to define "compactness" and they are ignoring the intent of Amendments 5 & 6 by using semantics to justify use of districting software without geospatial analysis.

The Gerrymandering Index¹ provides a District "Shape & Compactness Score" as well as a clearly detailed definition of "Compactness: Dispersion and Indentation". Just as assessing credit without a credit rating would be ludicrous, so assessing compactness without a compactness rating would be equally futile.

Finally, the Palm Beach County Democratic Party calls for an upgrade to the Districting Software to include geospatial analysis so that the true intent of Amendments 5 & 6 are accomplished.

Partisan gerrymandering equates to voter suppression which cannot be permitted any longer. We the 63% of voters, should not have to go through the court system as a solution to this problem.

Respectfully submitted,

The Palm Beach County Democratic Party Legislative Committee:

Wendi Lipsich & Mae Yates Co-Chairs, Florence Fidell, Adele Kaserman, Frieda Martey, Rick Neuhoﬀ, Allen Robbins, Ken Sommers and Bill Weg.

1 - The Gerrymandering Index, a whitepaper from Azavea / Cicero (Oct 2006 rev. 2010)

Subject: District Builder Question
From: Robbins <allenhip2@bellsouth.net>
Date: Wed, 23 Feb 2011 14:29:36 -0500
To: DB.Help@flsenate.gov, "GUTHRIE.JOHN" <GUTHRIE.JOHN@flsenate.gov>
CC: Mark Alan Siegel <masiegel@gate.net>, Terrie Rizzo <terrierizzo@yahoo.com>, Richard Ingman <ingman100@yahoo.com>, sean.phillippi@gmail.com

To: John Guthrie

From: Allen Robbins

I was unable to find in District Builder an index rating that prevents Gerrymandering, if I missed it let me know.

There are a number of standards or formulas that give a user rating for geospatial analysis.

I read your help section very carefully and found no reference to this type of geospatial analysis to measure relative compactness of electoral districts that gives it a **specific rating** as part of the (Analyze Plan) or (Show Plan Summary) section of District Builder.

I'm sending you a white paper that addresses this problem.

cc. Mark Alan Siegel
cc. Terrie Rizzo
cc. Richard Ingman
cc. Sean Phillippi

Gerrymandering_Index_Whitepaper.pdf	Content-Type: application/pdf Content-Encoding: base64
-------------------------------------	---

Richard Ingman & Associates

1400 South Ocean Boulevard, Suite N804
Boca Raton, Florida 33432

March 3, 2011

Mr. John Guthrie
Staff Director
Florida State Senate
Select Committee on Apportionment & Redistricting
404 S. Monroe St
Tallahassee, FL 32399-1100

Dear Mr. Guthrie:

I am following up on the email sent to you on February 23, 2011 by my associate, Allen Robbins; he has yet to receive a reply.

For the redistricting process, a software known as District Builder will be used. Modern redistricting software has a feature which gives a mathematical geospatial rating, also called a "compactness rating" to each proposed district. A tightly drawn district, in which each voter lived at the minimum possible distance from the center, would get a high rating. An "octopus" district with tentacles all over the map (like many of our current districts in Florida) would get a very low rating.

We have not found any such "compactness rating" feature in District Builder. If it exists, we would greatly appreciate your help in finding it. If not, then we must strongly protest. A mathematical "compactness rating" would raise the level of debate and help determine if the proposed new districts meet one of the design requirements in the new amendments to the Florida constitution. A common tool for this important evaluation should be included in the final version.

I look forward to your prompt response.

All the best,

Richard Ingman

RI/mas

Fw: Geospatial analysis in District Builder

Subject: Fw: Geospatial analysis in District Builder
From: "Richard.Mary Ingman" <ingman100@yahoo.com>
Date: Thu, 3 Mar 2011 07:40:05 -0800 (PST)
To: Mark Alan Siegel <masiegel@gate.net>, Allen Robbins <allenhip2@bellsouth.net>, Sean Phillippi <sean.phillippi@gmail.com>
CC: Terrie Rizzo <terrierizzo@yahoo.com>

Hi:

Thank you for your input on our letter to John Guthrie. I incorporated your suggestions, and attach my email, to which is attached my formal letter. (I did not know, Mark, that I was Richard Ingman & Associates, but what fine Associates!!)

Richard

--- Forwarded Message ---
From: Richard.Mary Ingman <ingman100@yahoo.com>
To: John Guthrie <GUTHRIE,JOHN@flsenate.gov>
Sent: Thu, March 3, 2011 10:37:23 AM
Subject: Geospatial analysis in District Builder

Dear Mr Guthrie:

Thank you for registering me as a user of District Builder.

I have examined the program. In common with Mr. Allen Robbins (who sent you an email on 2/23), I cannot find any geospatial analysis feature, which would give a mathematical rating to the relative physical compactness of proposed districts.

Since we are sure that modern redistricting packages contain this feature, we would appreciate very much if you would point out how to access it.

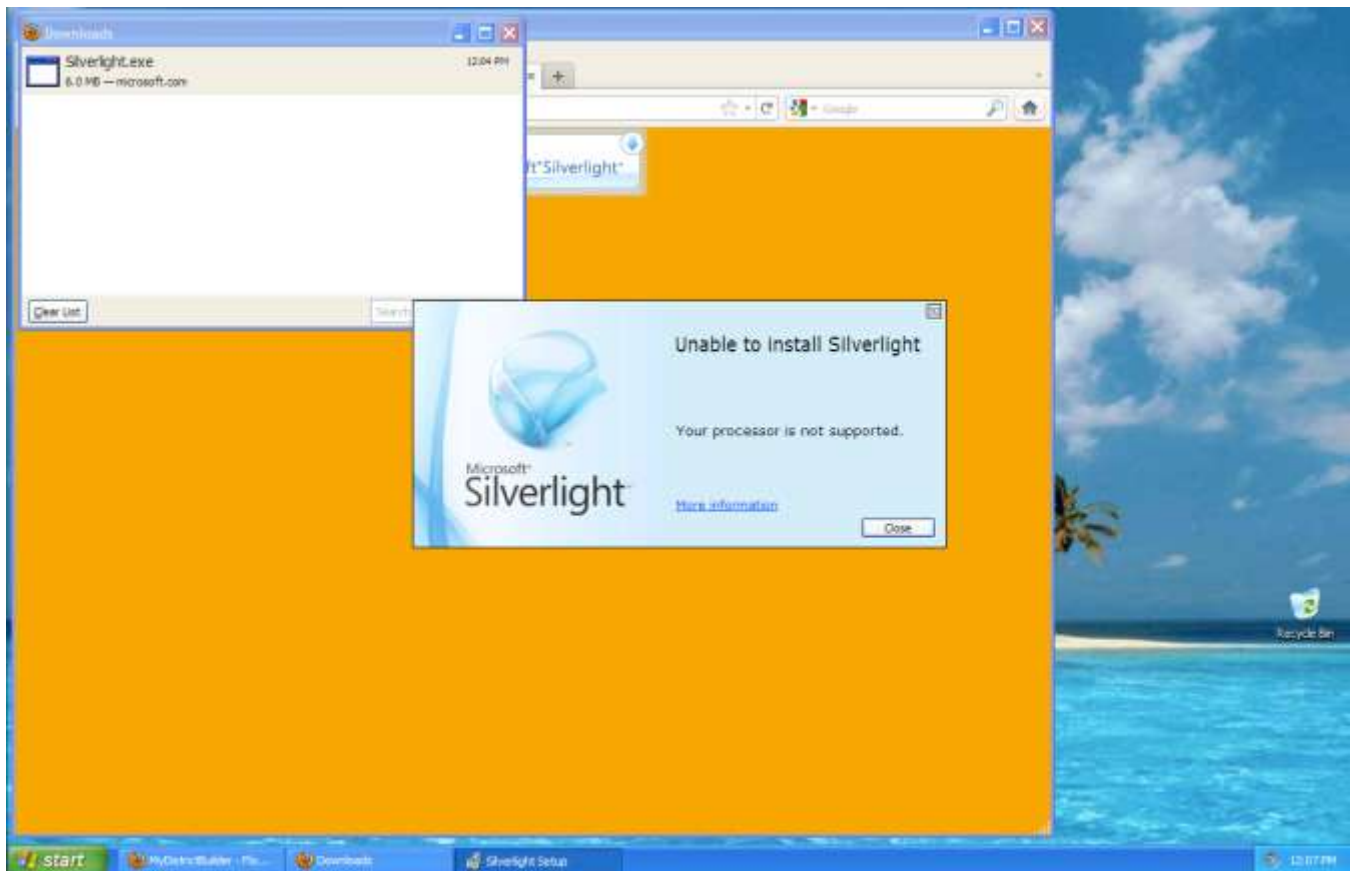
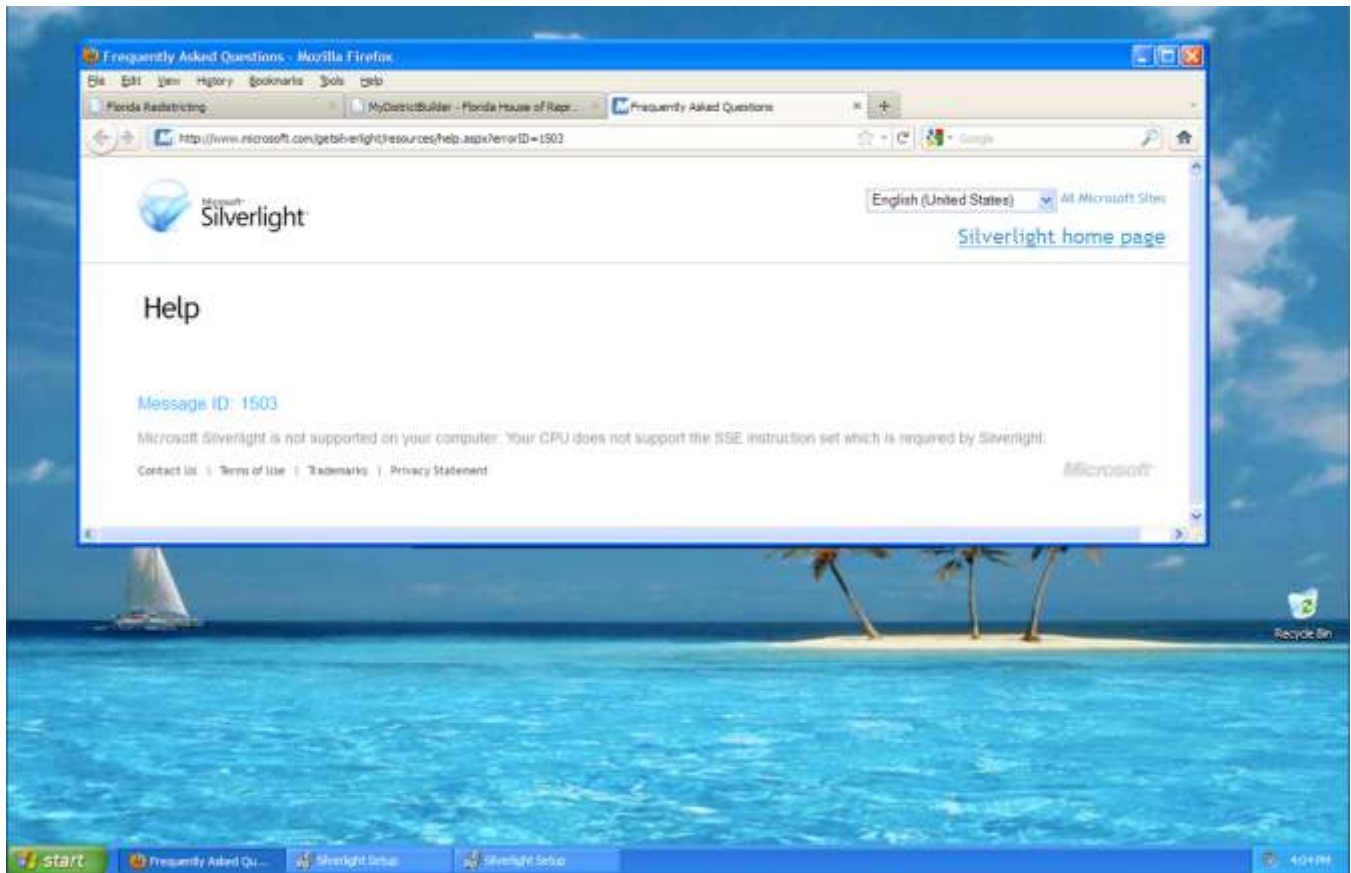
I attach a letter to this same effect, which I am also sending my mail.

I look forward to your response.

Thank you.

Richard Ingman

Guthrie 030311.pdf	Content-Type: application/pdf Content-Encoding: base64
---------------------------	---



Submission from Herman Robinson



Please Provide Completed Form To:

Legislative Staff at the Meeting.

or

Email to: mydistrictbuilder@myfloridahouse.gov
and redistrictflorida@flsenate.gov.

or

Fax to (850) 487-6413



Florida Redistricting Suggestion Form

By submitting this form, I acknowledge that my comments and suggestions may be displayed on www.floridaredistriking.org and www.flsenate.gov/redistricting or other public websites maintained by the Florida Legislature. Note: the entirety of this form is public record.

*Field is required.

Prefix _____ *First Name Herman *Last Name Robinson Suffix _____

Organization Name (If applicable) _____

*Your Address 114 Ocean Breeze *City Lake Worth *State FL *Zip 33460

Your County Palm Beach Your Email HCRFLA99@yahoo.com

*What type of map are you commenting on? Congressional State House State Senate

*Would you like to receive email updates regarding Florida Redistricting? Yes No

Please provide detailed comments regarding your redistricting suggestion or request.

*You have a chance to establish some respect for
Sailors by respecting citizen votes. Please make
boundaries more like building blocks of good representative
government rather than a slimy fish that protects
your jobs over compactness, and respect for community.
People are discussed enough with government
that is not fair.*

Herman Robinson

(Over)

www.floridaredistriking.org

www.flsenate.gov/redistricting

Submission from Stacy S. Ruwe

FERRIN.JAY

From: Stacy Ruwe [Ruwe@comcast.net]
Sent: Sunday, August 14, 2011 3:59 PM
To: MyDistrictBuilder
Subject: redistricting

Dear Legislator,

I write to request that the coastal districts of Palm Beach County to be kept together as these districts in Congress (FL 22) and the FL House (83 and 25) all share similar interests. They are coastal districts which are concerned about similar issues like hurricane preparedness, property insurance, tourism and beach erosion, to name a few. I believe that they differ in their concerns from the remainder of Palm Beach County. I have lived in FL since March 2006 in Palm Beach Gardens. Thank you for listening to my concerns before redistricting.

Sincerely yours,
Stacy S. Ruwe
512 Les Jardin Drive
Palm Beach Gardens, FL 33410

Submission from Shirley L. Schaff

FERRIN.JAY

From: Shirley L Schaff [shirley.schaff@gmail.com]
Sent: Tuesday, August 16, 2011 12:10 PM
To: MyDistrictBuilder
Subject: Redistricting

Florida Legislature:

Thank you for listening to the citizens in the redistricting matter. I have lived in Palm Beach County for 18 years and ask that you keep Congressional districts 22 and Florida House 83 and 25 together. They all share similar concerns in hurricane preparedness and beach erosion and need to remain together.

Thank you for your time.

Shirley L Schaff
West Palm Beach

Submission from Mark Schneider



Please Provide Completed Form To:
 Legislative Staff at the Meeting,
 or
 Email to: mydistrictbuilder@myfloridahouse.gov
 and redistrictflorida@flsenate.gov,
 or
 Fax to (850) 487-6413



Florida Redistricting Suggestion Form

By submitting this form, I acknowledge that my comments and suggestions may be displayed on www.floridaredistricting.org and www.flsenate.gov/redistricting or other public websites maintained by the Florida Legislature. Note: the entirety of this form is public record.

*Field is required.

Prefix DR *First Name MARK *Last Name SCHNEIDER Suffix

Organization Name (If applicable)

*Your Address 5165 PALAZZO PL *City BOYNTON B. *State FL *Zip 33437

Your County P.D. Your Email

*What type of map are you commenting on? Congressional State House State Senate

*Would you like to receive email updates regarding Florida Redistricting? Yes No

Please provide detailed comments regarding your redistricting suggestion or request.

Members of the Florida House and Senate:

I'd like to address the impact of redistricting on the representation of racial minorities and on the implementation of policies addressing the needs of minority communities. In the previous Senate, 3 of 15 senators from South East Florida were black, as were 4 of 23 members of the House. Two of the black senators were elected from majority-minority districts, while one was elected from a majority-majority district. Three of the black House members were from minority-majority districts, while one was from a majority-majority district.

The ability of minority legislators to be elected from majority-majority districts, argues that the redistricting process should not cluster minorities as heavily in specific districts as they are currently. Black minority-majority districts are comprised of an average of roughly 60% black voters. The black electorate outside these districts averaged around 10%. The latter districts are commonly called "bleached" because of the effect of clustering minorities in specific districts.

The process of bleaching districts in the redistricting process may guarantee representation by minorities in the legislature. This representation, I suggest, would be preserved were the bleaching reduced. Further, the domination of the legislature by highly bleached districts more or less guarantees that the legislative process ignores the needs of minority communities. As a case in point, consider the failure of the current legislature to support penal reforms that would lessen the disproportionate impact of incarceration on minority communities—despite these reforms having impeccable conservative backing from Florida TaxWatch.

Therefore I encourage you to bleach less in drawing your new maps. Less bleaching should lead both to greater minority representation, and, more importantly, to a greater legislative attention to matters of vital concern to minority communities.

Thank you for the opportunity to alert you to this pressing issue.

Mark A. Schneider, Boynton Beach, 561-752-0946

Submission from John R. Smith

SPEAKER:
JOHN R. SMITH

REMARKS #1

Hello. My name is John R Smith. I own a financial services company and I Chair the Business Political Action Committee of Palm Beach County.

The business leadership here is very aware that "communities of interest" exist in Palm Beach County. We believe their interests must be recognized and preserved by the legislature, and we believe this can be accomplished without violating the new standards from Fair Districts. We have communities here that have more in common with each other, than they do with other geographic or demographic interests.

Your goal must be to unite distinct "communities of interest", such as the large coastal community of interest, agricultural districts, and inner-city or minority districts. These communities need and deserve representation which reflects their unique needs, which can only be preserved if redistricting is fair.

The coastal communities especially must be considered a "community of interest". It is important they be kept together in state legislative and Congressional districts, so that they have the opportunity to elect people who understand their unique and specific concerns. They have different concerns than the more inland parts of the County. Their unique needs and interests include property insurance, hurricane storm surge protection, the environment, and tourism, all of which are particularly important to folks who live along the coast.

Likewise, the agricultural communities in the western part of the county are the engine that drives their local economy, and are the primary source of jobs. They are a "community of interest" with a completely different economic make-up than coastal communities. Their interests need to be recognized. For example, joining both the agricultural communities and coastal communities into the same district would ultimately disenfranchise both of them in Tallahassee.

The county also has thriving African-American communities, such as in Riviera Beach, Pahokee, Belle Glade, and South Bay, which is a third "community of interest." Those cities should remain in the "majority minority" House seat (Mack Bernard) they have today. Also, African-Americans in Riviera Beach should remain in the "majority minority" Senate district (Chris Smith) as they are today. This is necessary in order to ensure that the minority citizens in these communities don't lose their voice by being included in districts dominated by non-minority voters.

Thank you for taking our needs into consideration.

Submission from Joy Stone

FERRIN.JAY

From: Joy Stone [stonebug@mac.com]
Sent: Tuesday, August 16, 2011 12:09 PM
To: MyDistrictBuilder
Subject: Redistricting.

Dear Sirs:

I have lived in Palm Beach County my whole life, 60 years. I'm currently residing in the town of Jupiter.

I request that you keep our coastal districts intact, Congress FL 22 and FL House 25 and 83. These residents have unique concerns - beach erosion, tourism, hurricane preparedness, environmental concerns such as turtle protection, oil spills, etc.

Thank you for listening to the people.

Blessings,
Joy Stone
16 W Riverside Dr.
Jupiter 33469

stonebug@mac.com

Submission from Diane Van der Meer

August 16, 2011

My Name is Dianne Van der Meer and I am a member of the clergy. I hold a post graduate degree in Higher Education Administration, Policy and Planning from Boston University and I am currently a doctoral student, at Union University, in Higher Education and Social Justice. I am speaking as a concern citizen.

My contact Information: email: vandermeerdee@yahoo.com. Phone 857-753-7737.

The transparency to which these re-districting public forums are held around the state is plausible. However, legislators do have the moral duty of ensuring Justice and Fairness, for its entire constituency, to the best of their ability.

In determining whether to move forward with any proposed redistricting plans, legislators, by virtue of their office, owe it to the people of Florida, "to do the right thing." While I recognize from a political view, justice as fairness exemplifies what brings the greatest satisfaction to the majority, I am of the view, that, to truly be able to "do the right thing," the voice of minority groups must be very present in this equation; or, the process and any good intent of these re-districting forums will be nothing but a farce. Legislators must ensure that the voice of the minority population is not denied by virtue of limiting their scope to elect their own representation to the legislature.

To this end, as the current debates, once again, bring Section 5 of the Voting Rights Act to the table; it becomes the duty and social responsibility of you as legislators to protect the voice of freedom, to which minority groups could have adequate representation that is not tampered with, but preserved, in the spirit of democracy.

Dianne Van der Meer

Boca Raton, Florida
Precinct 4128
August 16th. 2011

Submission from Margie J. Walden

Communities

Abbey Village
Addison Reserve C.C.
Addison Trace
Aspen Ridge
Bel-Aire
Boca Delray C.C.
Bonaire Village
Bridgeview
Bristol Pointe
Camelot Village
Cloister Del Mar
Coco Wood Lakes
Country Lake
Crosswinds of Delray
Deauville Village
Delaire C. C.
Delray Harbor Club
Delray Lakes Estates
Delray Summit
Delray Villas I
Delray Villas III
Delray Villas IV/V
Delray W. Townhouses
Emerald Pointe
Floral Lakes
Four Seasons
Glencroft C. C.
Hamilton House
Hamlet C. C.
Heritage Park West
High Point of Delray Beach
High Point West I
High Point West 2
Hunter's Run C.C.
Huntington Lakes (5)
Huntington Pointe
Huntington Towers
International Club
Kings Point
Lakes of Delray
Las Verdes
Legacy at Sherwood Forest
Lexington Club
Mizner Master Assoc. HOA
Monterey Lake
Morningstar
Newport Cove
Palm Beach Bath & Tennis
Palm Greens 1
Palm Greens 2
Pelican Harbor
Pines of Delray E.
Pines of Delray N.
Pines of Delray W.
Pine Ridge of Delray Beach
Pinewood Cove
Polo Trace C. C.
Rainberry Bay Master
Rainberry Bay Homes
Rainberry Bay Villas
Rio Poco
Saturnia Isles
Shadywoods
Tierra Del Rey
Tierra Verde at Delray Beach
Tropic Bay
Tropic Isle
Valencia Falls
Valencia Palms
Villa Borghese
Vizcaya
Waterways
Whisper Walk (5)

Alliance of Delray Residential Associations, Inc.

13900 Jog Road, Suite 203 - 212

Delray Beach, FL 33446

Phone (561) 495-9670 FAX# (561) 495-0888

Visit our Website: www.allianceofdelray.com

August 16, 2011

The Alliance of Delray is a community based organization comprised of 81 condominium and homeowner's associations in Delray Beach representing more than 100,000 residents. We work towards building a strong community by addressing issues that improve our quality of life.

63% of Florida voters supported fair redistricting and it seems that this process is not being carried out fairly by our State Legislators. The 100,000 residents that the Alliance of Delray represents have a great concern about the following:

1. The deletion of the compactness and geospatial analysis from the My District Builder software-an important component that ensures equal population in each district and helps make sure districts are not drawn to favor or disfavor a particular political party
2. The lack of proposed plans and maps distributed to the public for comment prior to these public meetings
3. Only allowing comments from the public on proposed maps during committee meetings that will be held in Tallahassee during session
4. Utilizing taxpayer funds in a pending lawsuit to overturn Fair Districting amendments that were approved by 63% of the population
5. Establishing an unrealistic timeline for approval that will prevent the completion of the entire process in time for all incumbent and new candidates to declare their candidacy and for the Supervisor of Elections to prepare ballots.

Therefore, these meetings are not really about the public being able to comment on bona-fide proposals or maps. Instead, these meetings have become forums for the public to complain, question and share their lack of confidence about the fairness of amendments that were passed by close to 2/3 of all registered Florida voters. Moreover, it seems that redistricting will only be decided by the Florida Supreme Court after the 2012 election is completed.

So as we are facing extremely high unemployment and services being cut we are all counting the millions of dollars being spent on holding these meetings and suits pending on the constitutionality of these amendments. This is not good governance and the waste is unconscionable. The Alliance of Delray members will be watching very closely and are prepared to make our voices heard through every possible channel during this entire process to ensure the enactment of fair districts.

Margie J. Walden
Exec. VP

Officers

Robert Schulbaum, *President*

Margie J. Walden, *Executive Vice President*

Lori Vinikoor, *First Vice President*

Mort Mazor, *Vice President*, Barbara Zee, *Vice President*,

Evelyn Spielholz, *Secretary*, Stan Kalish, *Treasurer*

Directors

Norma Arnold, Ed Berger, Edwin Goldwasser, Stan Goodman,

Harold Kleiner, Charles Laufer, Phyllis Levine, Susan Zuckerman

Joshua Gerstin, *Legal Counsel*

Assistants to the President-Richard Herman, Carol Klausner, Marianne Weisman

REDISTRICTING · 2012


ABOUT REDISTRICTING

After each decennial Census, the Legislature redraws the districts from which voters elect their public officials. In general, districts are redrawn to accommodate population change and ensure that district populations are as nearly equal in number as practicable.

There will be opportunities for citizen participation during public hearings, interim committee meetings, and the 2012 Session.

THE NUMBERS

In 2012, the Legislature will redraw the state's congressional districts as well as districts for Florida House and Florida Senate seats. The number of congressional districts in Florida will increase from 25 to 27. The number of Florida House seats must be between 80 and 120, while the number of Florida Senate seats must be between 30 and 40. Currently, the Florida House and Florida Senate contain 120 members and 40 members, respectively. If these numbers are maintained, the average population of a Florida House district will be 156,078, while the average population of a Florida Senate district will be 470,633. Each congressional district will contain approximately 696,345 people.



REDISTRICTING LAW

The United States Constitution, the federal Voting Rights Act of 1965, and the Florida Constitution each regulate redistricting. Under the United States Constitution, district populations must be as nearly equal as practicable. In addition, race may not be the predominant factor in drawing lines, unless the use of race is narrowly tailored to achieve a compelling interest.

The Voting Rights Act requires the creation of a district that performs for racial minorities where (1) a minority population is geographically compact and sufficiently numerous to be a majority in a single district, (2) the minority population is politically cohesive, (3) the majority votes insufficiently as a bloc to enable it usually to defeat the minority-preferred candidate, and (4) under all of the circumstances, the minority population has less opportunity than others to participate in the political process and elect representatives of its choice.

The Voting Rights Act applies additional requirements to districts that include any part of Collier, Hardee, Hendry, Hillsborough, or Monroe County. In these districts, the Voting Rights Act prohibits purposeful discrimination and protects against retrogression—or backsliding—in the ability of racial minorities to elect representatives of their choice. To ensure compliance with these requirements, the redistricting plan must be submitted to and precleared by a federal court or the United States Department of Justice before it may be enacted.

The Florida Constitution requires that districts be contiguous. A district is contiguous if all of its territory is in actual contact, uninterrupted by the territory of another district. Contact at a corner or right angle is insufficient, but territory may cross bodies of water. The Constitution allows that legislative districts to overlap, either partially or entirely.

In November 2010, the voters added Amendments 5 and 6 to the Florida Constitution. These Amendments prohibit line drawing that intentionally favors or disfavors a political party or an incumbent. The Amendments also afford protection to racial and language minorities. Districts may not be drawn (1) with the intent or result of denying or abridging the equal opportunity of racial or language minorities to participate in the political process, or (2) to diminish their ability to elect representatives of their choice. Finally, unless it would conflict with federal law or the standards described above, the Amendments require that district populations be as nearly equal as practicable, and that districts be compact and, where feasible, follow existing political and geographical boundaries.

PUBLIC COMMENTS

The Legislature will draw lines in accordance with the standards in federal and state law and traditional redistricting principles not inconsistent with those standards. In this end, the Legislature encourages public testimony directed to the following points:

- The full implementation of the protections afforded by the Amendments to racial and language minorities, including continuance of the Legislature's long-established policy to preserve or enhance the number of performing minority districts.
- The various measures of compactness, from geometric calculations to a broad consideration of how communities relate to one another, for example through commerce, transportation, and communication—in order to promote the creation of effective representational units.

REDISTRICTING 2012

- The feasibility of using political and geographical boundaries in the formation of districts, in light of other standards such as the equality of district population, the protection of racial and language minorities, and compactness.
- To the extent not inconsistent with the Amendments, the desire to preserve the cores of existing districts or the proper placement of communities of interest in districts, as determined by local circumstances and voter preferences.

This approach, together with public testimony, research, and facts developed throughout the redistricting process, will result in the adoption of redistricting plans that have the intent and result of full compliance with all legal mandates, including Amendments 5 and 6, and of effective and meaningful representation for all voters in the State of Florida.

Citizens from all parts of the state can visit the House website (www.floridaredistricting.org) and the Senate website (www.floridasenate.gov/Redistricting), to learn about creating and submitting their own House, Senate, and congressional maps, and to participate actively in the most open, transparent, and interactive redistricting ever.

LEGAL REVIEWS

After enactment, state senatorial and representative districts are reviewed by the Florida Supreme Court.

Congressional districts are set by an act of the Legislature subject to the Governor's approval. All redistricting plans must be submitted to and precleared by a federal court or the United States Department of Justice.

REDISTRICTING MILESTONES

- JUNE 20 - SEPTEMBER 1, 2011: STATEWIDE PUBLIC HEARINGS
- SEPTEMBER - DECEMBER 2011: INTERIM COMMITTEE MEETINGS
- JANUARY 10 - MARCH 9, 2012: REGULAR SESSION
- FEBRUARY - JUNE 2012: LEGAL REVIEWS
- JUNE 4 - 8, 2012: QUALIFYING FOR STATE AND FEDERAL OFFICES
- AUGUST 14, 2012: PRIMARY ELECTION
- NOVEMBER 6, 2012: GENERAL ELECTION

SENATE COMMITTEE ON REAPPORTIONMENT

Senator Don Gault, Chair
www.floridasenate.gov/redistricting
 103 Senate Office Building
 404 South Monroe Street
 Tallahassee, FL 32399-1100
 (850) 487-5555
RedistrictFlorida@flsenate.gov

HOUSE REDISTRICTING COMMITTEE

Rep. Will W. Weatherford, Chair
www.floridaredistricting.org
 400 House Office Building
 402 South Monroe Street
 Tallahassee, FL 32399-1300
 (850) 488-3928
mydistrictbuilder@myfloridahouse.gov

Visit

www.floridaredistricting.org and
www.floridasenate.gov/Redistricting
 to learn more about creating and
 submitting your own house, senate,
 and congressional maps.

Draw and Submit Your Own Districts

District Builder is a full-featured web application with 2010 Census data for drawing Florida Senate, Florida House, and Congressional districts and submitting them to the Legislature. Submitting your plan is one of the best ways to show what works for your community. Citizens have full and easy access to the same web application and information that Senators and professional staff use.

To start using District Builder you need:

- A personal account. Choose “**District Builder**” at www.flsenate.gov/Redistricting to register.
- Display resolution of 1024 x 768 or higher.
- A broadband Internet computer and mouse. Firefox (3.6 and 4.0) and Internet Explorer (7 and 8) are supported (Internet Explorer 9 and Opera are not). Your browser must be set to allow JavaScript and pop-ups from “flsenate.gov.”

For full details, see <https://db10.flsenate.gov/db1/help>.

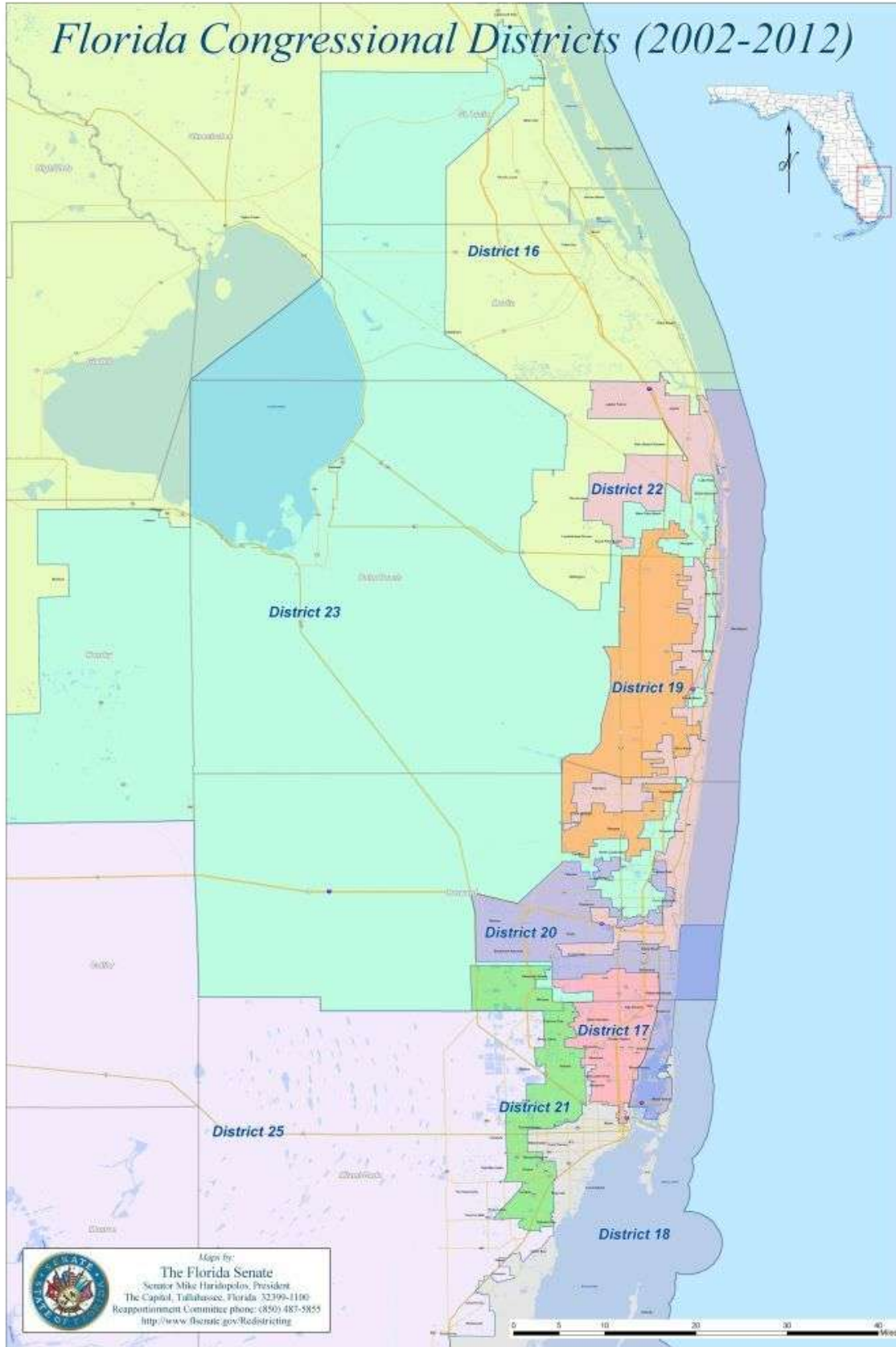
When you decide to submit your plan for public consideration, it will be published at <http://www.flsenate.gov/Session/Redistricting/Plans> with a standard set of interactive map links, reports, downloads, and maps. Otherwise, your personal plans are stored on secure servers and exempt from inspection and copying. See § 11.0431(2)(e), Fla. Stat.

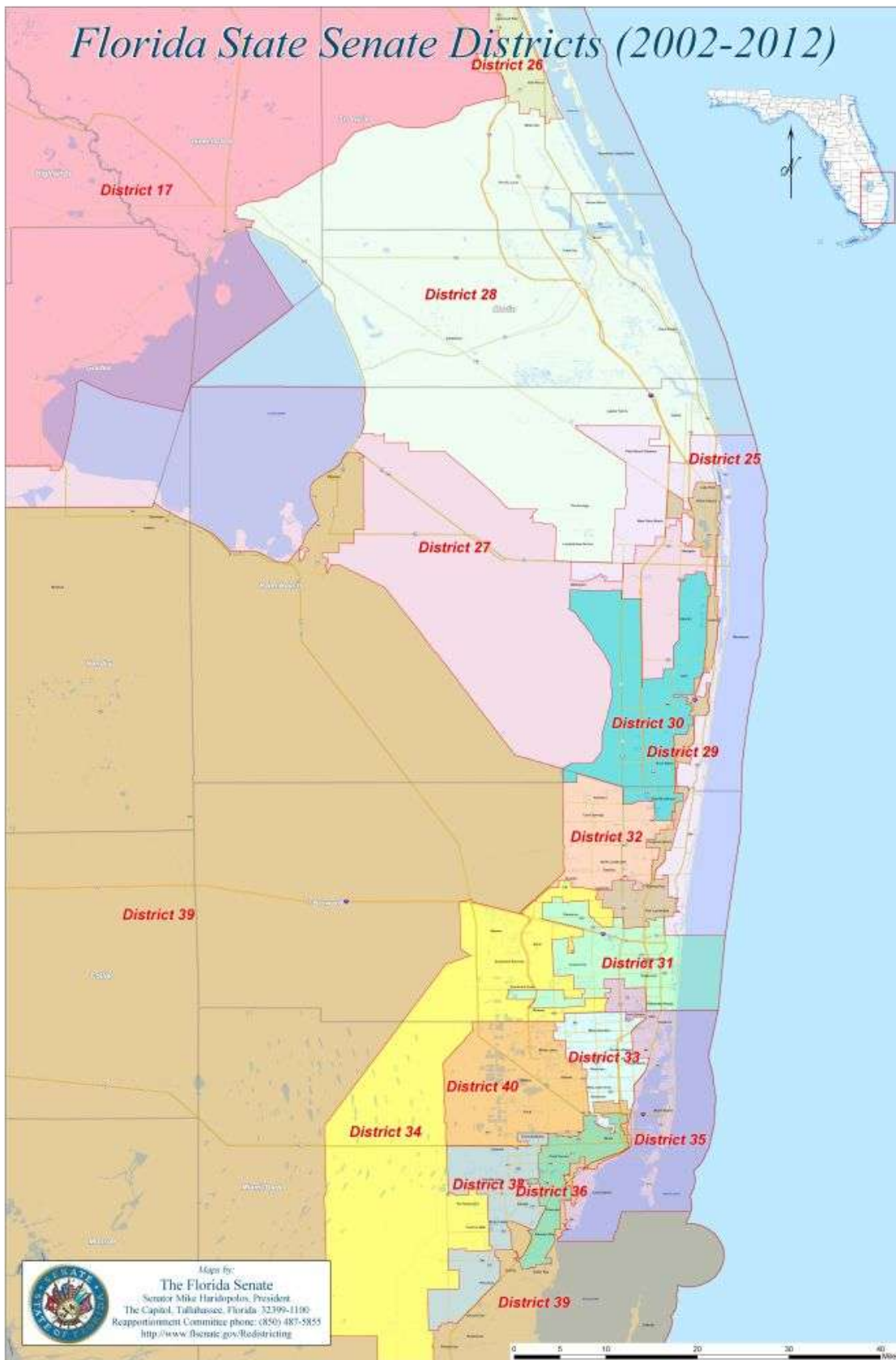
The Florida House of Representatives is building its own web application. To learn about “MyDistrictBuilder,” see www.floridaredistricting.org. The fact that the Senate and House systems are different is a plus. Each has unique features, and citizens can choose which better meets their needs.

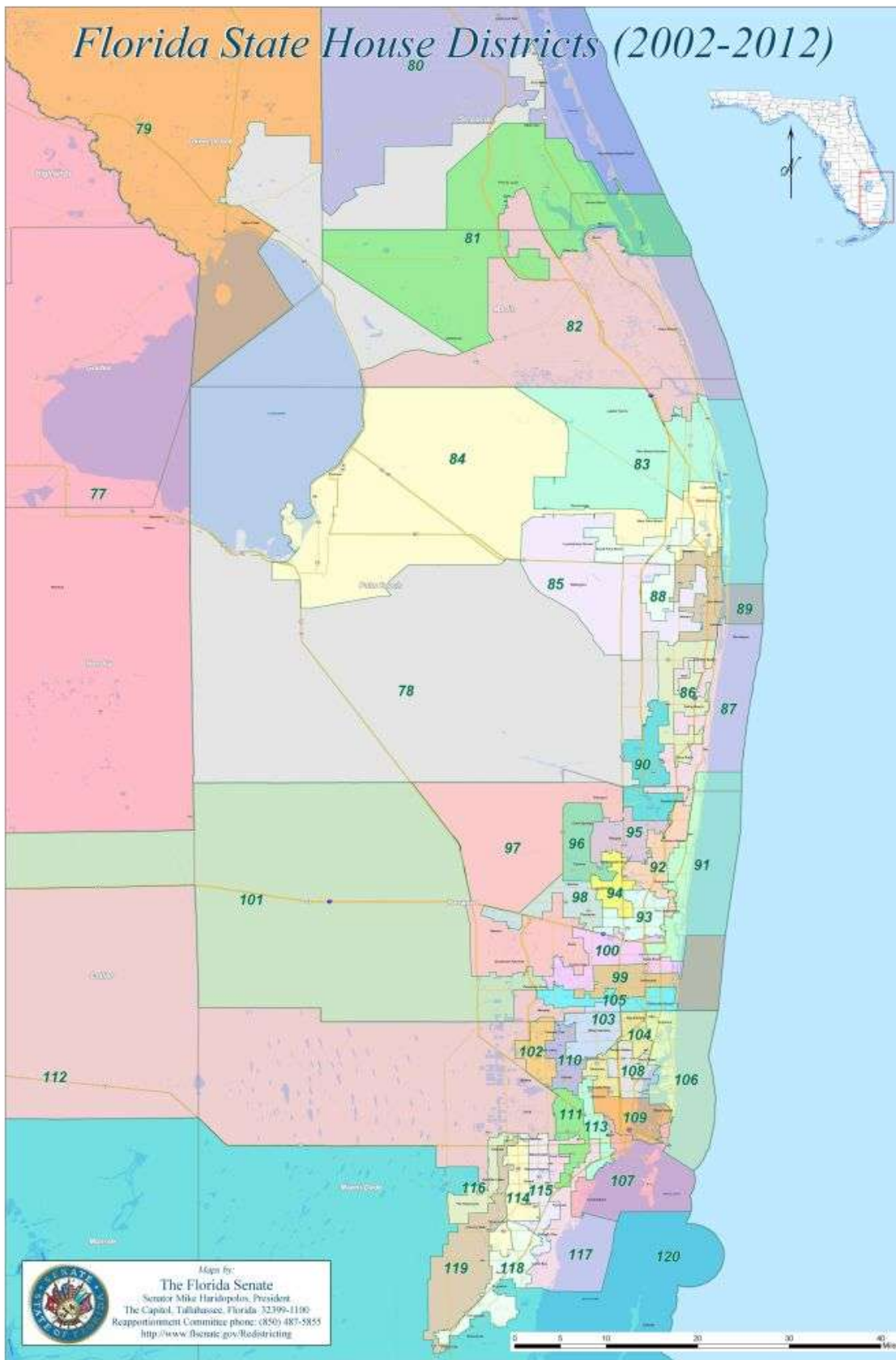
Full-featured redistricting systems typically cost thousands of dollars per user. The overarching goal shared by the Florida Senate and Florida House is giving everyone free and easy access to all the same tools and data the Legislature is using.

With innovative technologies and joint [public hearings](#), the Florida Legislature is promoting the most open, accessible, and interactive redistricting ever.

Displays Prepared by Florida Senate







Population deviations of current districts (2010 Census)—Southeast Florida

Congressional District	2010 Pop.	2010 Ideal	2010 Deviation	
			Count	%
16 Tom Rooney	797,711	696,345	101,366	14.6%
17 Frederica Wilson	655,160	696,345	-41,185	-5.9%
18 Ileana Ros-Lehtinen	712,790	696,345	16,445	2.4%
19 Ted Deutch	736,419	696,345	40,074	5.8%
20 Debbie Wasserman Schultz	691,727	696,345	-4,618	-0.7%
21 Mario Diaz-Balart	693,501	696,345	-2,844	-0.4%
22 Allen West	694,259	696,345	-2,086	-0.3%
23 Alcee L. Hastings	684,107	696,345	-12,238	-1.8%
25 David Rivera	807,176	696,345	110,831	15.9%

State House District	2010 Pop.	2010 Ideal	2010 Deviation	
			Count	%
78 Steven M. "Steve" Perman	156,153	156,678	-525	-0.3%
80 Debbie Mayfield	148,503	156,678	-8,175	-5.2%
81 Gayle B. Harrel	201,633	156,678	44,955	28.7%
82 William D. Snyder	172,265	156,678	15,587	9.9%
83 Patrick Rooney, Jr.	168,377	156,678	11,699	7.5%
84 Mack Bernard	144,934	156,678	-11,744	-7.5%
85 Joseph Abruzzo	193,827	156,678	37,149	23.7%
86 Lori Berman	142,110	156,678	-14,568	-9.3%
87 Bill Hager	137,131	156,678	-19,547	-12.5%
88 Mark S. Pafford	164,967	156,678	8,289	5.3%
89 Jeff Clemens	140,077	156,678	-16,601	-10.6%
90 Irving "Irv" Slosberg	142,553	156,678	-14,125	-9.0%
91 George R. Moraitis, Jr.	129,999	156,678	-26,679	-17.0%
92 Gwyndolen "Gwyn" Clarke-Reed	133,187	156,678	-23,491	-15.0%
93 Perry E. Thurston, Jr.	131,283	156,678	-25,395	-16.2%
94 Hazelle P. "Hazel" Rogers	135,245	156,678	-21,433	-13.7%
95 James W. "Jim" Waldman	134,355	156,678	-22,323	-14.2%
96 Ari Abraham Porth	140,377	156,678	-16,301	-10.4%
97 Martin David "Marty" Klar	169,848	156,678	13,170	8.4%
98 Franklin Sands	134,942	156,678	-21,736	-13.9%
99 Elaine J. Schwartz	137,645	156,678	-19,033	-12.1%
100 Evan Jenne	137,630	156,678	-19,048	-12.2%
101 Matt Hudson	189,600	156,678	32,922	21.0%
102 Eduardo "Eddy" Gonzalez	160,952	156,678	4,274	2.7%
103 Barbara Watson	138,339	156,678	-18,339	-11.7%
104 John Patrick Julien	137,432	156,678	-19,246	-12.3%
105 Joseph A. "Joe" Gibbons	151,273	156,678	-5,405	-3.4%
106 Richard L. Steinberg	150,952	156,678	-5,726	-3.7%
107 Luis R. Garcia, Jr.	156,177	156,678	-501	-0.3%
108 Daphne D. Campbell	132,251	156,678	-24,427	-15.6%
109 Cynthia A. Stafford	135,230	156,678	-21,448	-13.7%
110 Esteban L. Bowo, Jr.	132,138	156,678	-24,540	-15.7%
111 Erik Fresen	139,430	156,678	-17,248	-11.0%
112 Jeanette M. Nuñez	210,556	156,678	53,878	34.4%
113 Carlos Lopez-Cantera	136,597	156,678	-20,081	-12.8%
114 Ana Rivas Logan	133,125	156,678	-23,553	-15.0%
115 Jose Felix Diaz	135,054	156,678	-21,624	-13.8%
116 Carlos Trujillo	134,681	156,678	-21,997	-14.0%
117 Michael Bileca	150,960	156,678	-5,718	-3.6%
118 Dwight M. Bullard	162,848	156,678	6,170	3.9%
119 Frank Artiles	154,679	156,678	-1,999	-1.3%
120 Ron Saunders	170,078	156,678	13,400	8.6%

State Senate District	2010 Pop.	2010 Ideal	2010 Deviation	
			Count	%
25 Eilyn Setnor Bogdanoff	428,398	470,033	-41,635	-8.9%
26 Mike Haridopolos	481,892	470,033	11,859	2.5%
27 Lizbeth Benacquisto	551,555	470,033	81,522	17.3%
28 Joe Negron	545,085	470,033	75,052	16.0%
29 Christopher L. "Chris" Smith	397,144	470,033	-72,889	-15.5%
30 Maria Lorts Sachs	458,703	470,033	-11,330	-2.4%
31 Eleanor Sobel	432,649	470,033	-37,384	-8.0%
32 Jeremy Ring	428,898	470,033	-41,135	-8.8%
33 Oscar Braynon II	404,290	470,033	-65,743	-14.0%
34 Nan H. Rich	481,165	470,033	11,132	2.4%
35 Gwen Margolis	438,861	470,033	-31,172	-6.6%
36 Miguel Diaz de la Portilla	418,626	470,033	-51,407	-10.9%
38 Antire Flores	442,810	470,033	-27,223	-5.8%
39 Larcenia J. Bullard	483,183	470,033	13,150	2.8%
40 Rene Garcia	448,543	470,033	-21,490	-4.6%



Prepared by:
The Florida Senate
 Senator Mike Haridopolos, President
 The Capitol, Tallahassee, Florida 32399-1100
 Reapportionment Committee phone: (850) 487-5855
<http://www.flsenate.gov/Redistricting>

Population Deviations of Current Florida House Districts Relative to 2010 Census
 Ideal district population (156,678)

Population Deviations of Current Florida Senate Districts Relative to 2010 Census
 Ideal district population (470,033)

Population Deviations of Current Congressional Districts Relative to 2010 Census
 Ideal district population (696,345)

