



Congressional Redistricting Subcommittee

Meeting Packet

Monday, October 17, 2011
3:45 PM
404 HOB

Committee Meeting Notice

HOUSE OF REPRESENTATIVES

Congressional Redistricting Subcommittee

Start Date and Time: Monday, October 17, 2011 03:45 pm
End Date and Time: Monday, October 17, 2011 05:45 pm
Location: 404 HOB
Duration: 2.00 hrs

AGENDA:

Presentation and discussion of decision points and options for Congressional districts
Other Committee Business

NOTICE FINALIZED on 10/10/2011 14:25 by Crofoot.Katie

Florida House of Representatives

Congressional Redistricting Subcommittee

Staff Presentation on Options for:

- **The Congressional Map**

Regarding:

- **Options for urban communities;**
- **Options for high growth communities;**
- **Options for minority communities; and**
- **Options for starting the map in Central Florida.**

Last Updated: Monday, October 17, 2011

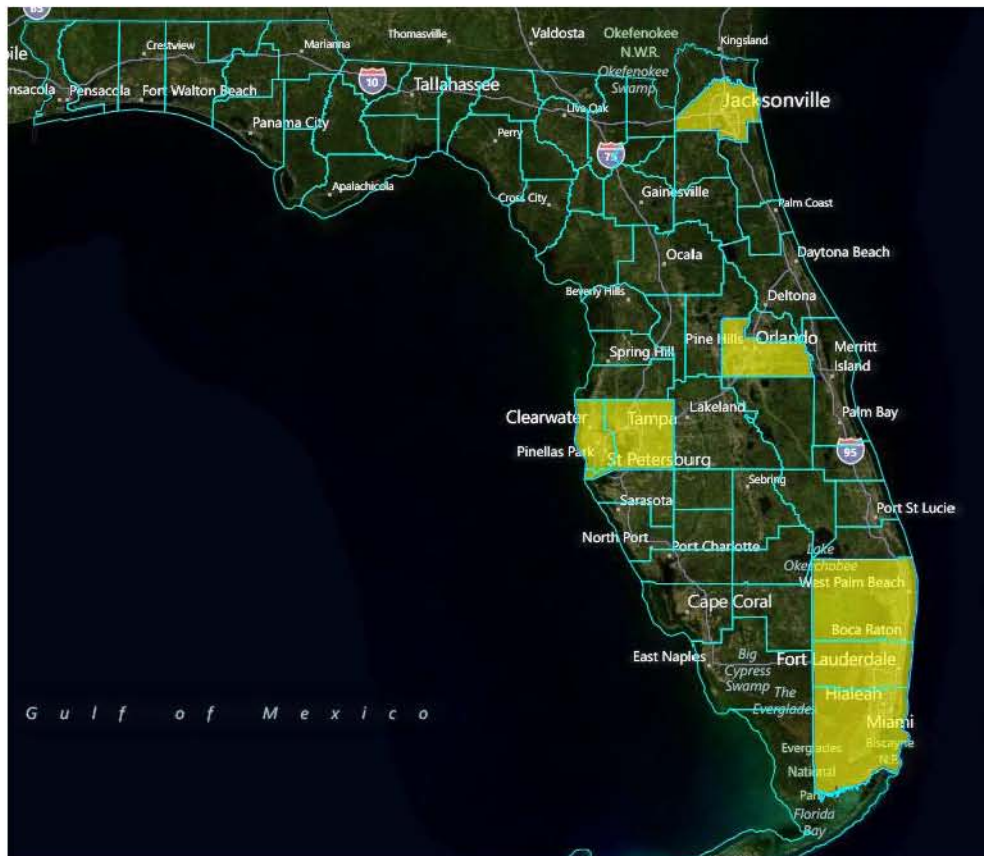
Introduction

Topics:

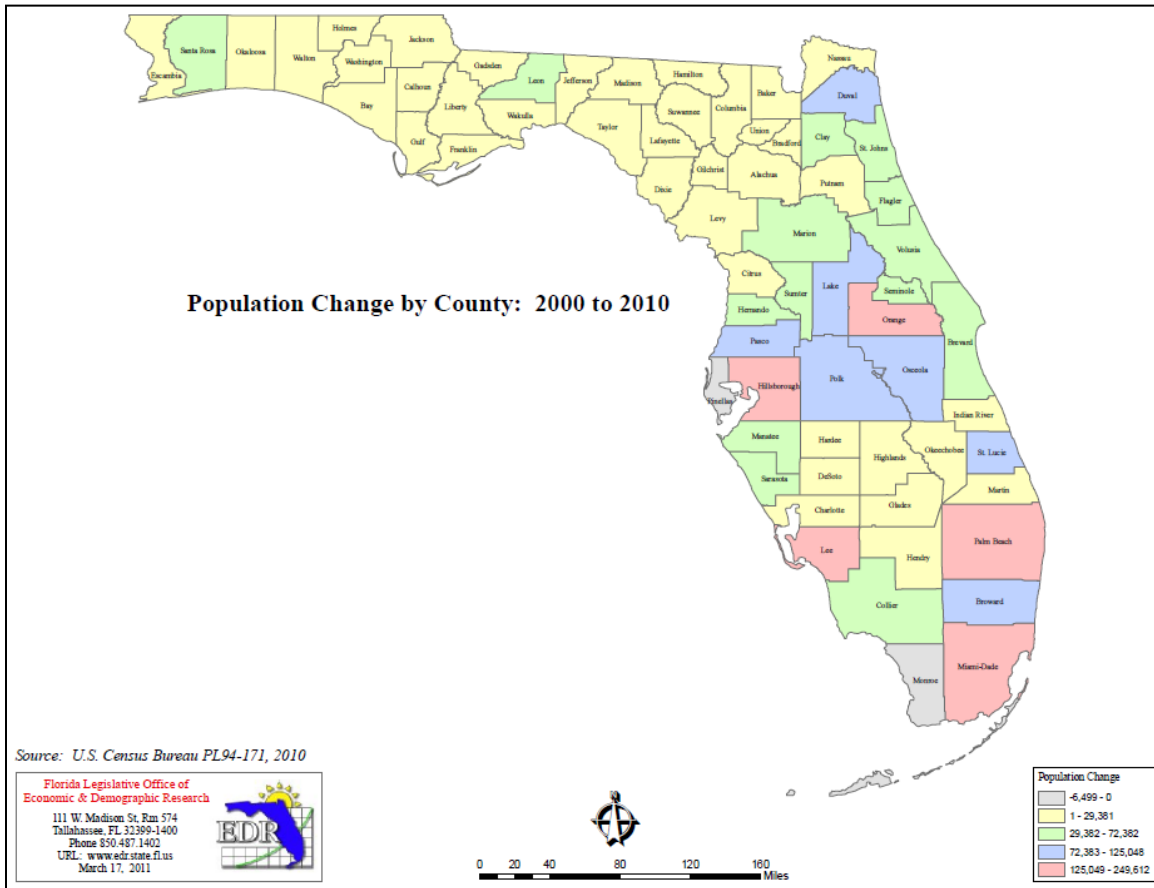
- Options for urban communities; Subsequent impacts on rural communities
- Options for high growth communities
- Options for minority communities
- Options for starting the maps in Central Florida

Qualifiers:

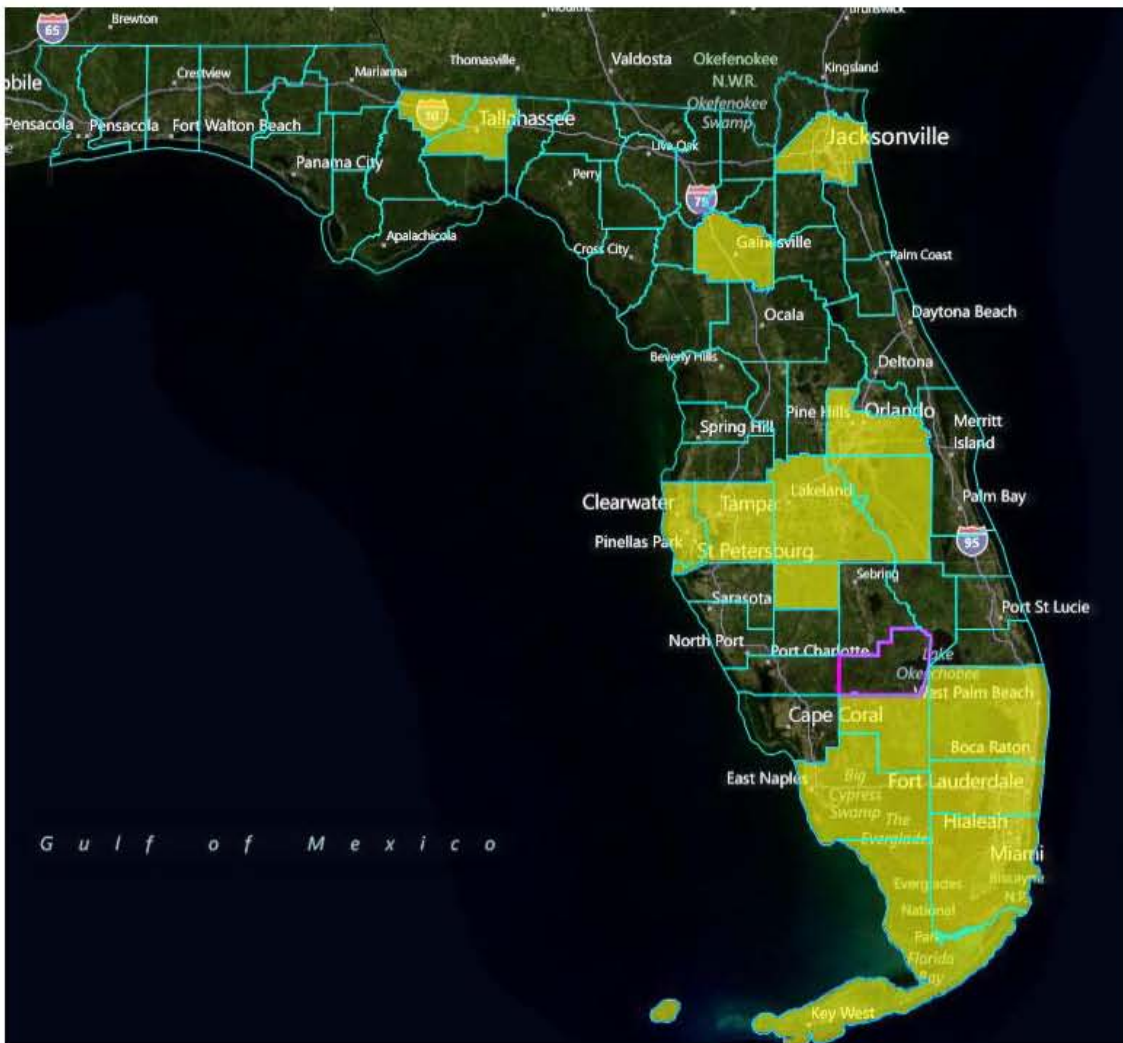
- Defined “urban communities” as though counties with a population larger than the ideal population of a Congressional district, i.e., larger than 696,345 Florida residents as of the 2010 Census.
 - Miami-Dade County – 2,496,435 residents
 - Broward County – 1,748,066 residents
 - Palm Beach County – 1,320,134 residents
 - Hillsborough County – 1,229,226 residents
 - Orange County – 1,145,956 residents
 - Pinellas County – 916,542 residents
 - Duval County – 864,263 residents



- Defined “high growth communities” according to the Florida Legislature’s Office of Economic & Demographic Research’s data regarding “Population Change by County: 2000 to 2010,” excluding those counties already covered by the first topic:
 - Lee County
 - St. Lucie County
 - Polk County
 - Osceola County
 - Pasco County
 - Lake County



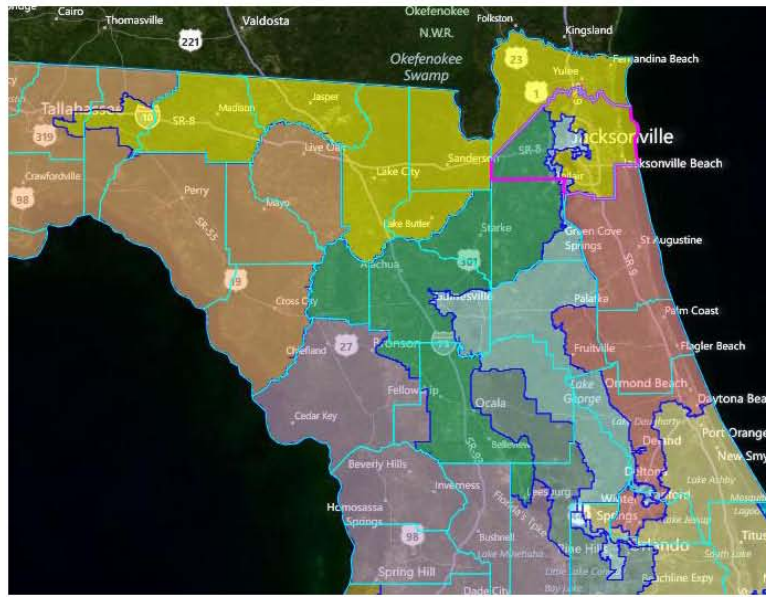
- Looked at the following counties, regarding “minority communities”:
- Alachua County
- Broward County
- Collier County
- Miami-Dade County
- Duval County
- Gadsden County
- Hardee County
- Hendry County
- Hillsborough County
- Leon County
- Monroe County
- Orange County
- Osceola County
- Palm Beach County
- Pinellas County
- Polk County



Duval County / Northeast Florida

- Minority communities in Alachua County
- Minority communities in Gadsden County
- Minority communities in Leon County

Current Congressional Map (2002)



- Congressional District 3 (light blue):
 - Population Deviation: -5.355%
 - Black VAP: 49.87%
 - Hispanic VAP: 10.57%
- Congressional District 4 (yellow):
 - Population Deviation: 6.904%
 - Black VAP: 14.64%
 - Hispanic VAP: 6.40%
- Congressional District 6 (green):
 - Population Deviation: 16.713%
 - Black VAP: 13.83%
 - Hispanic VAP: 7.92%

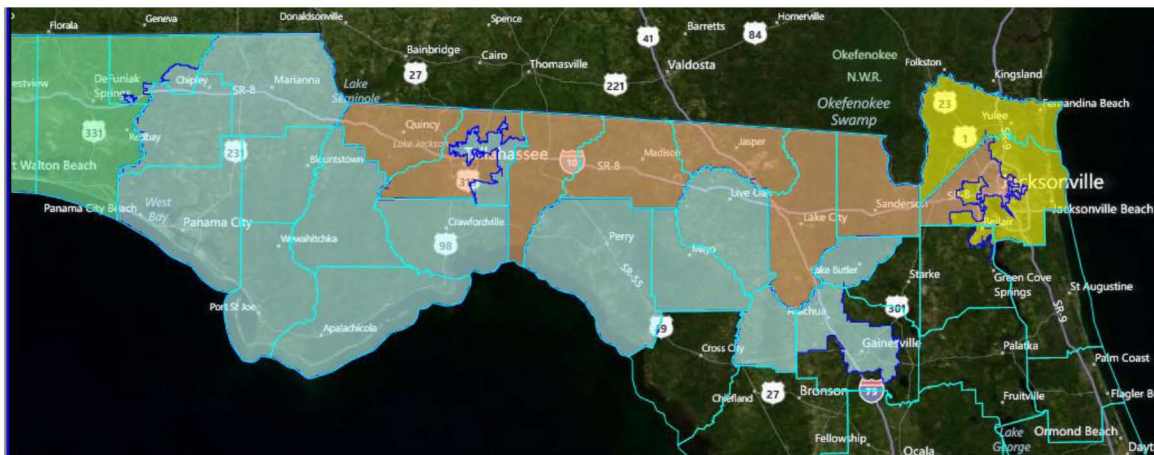
1. Black Minority Access District

Black Majority-Minority District; Duval to Orange County: HPUBC0001



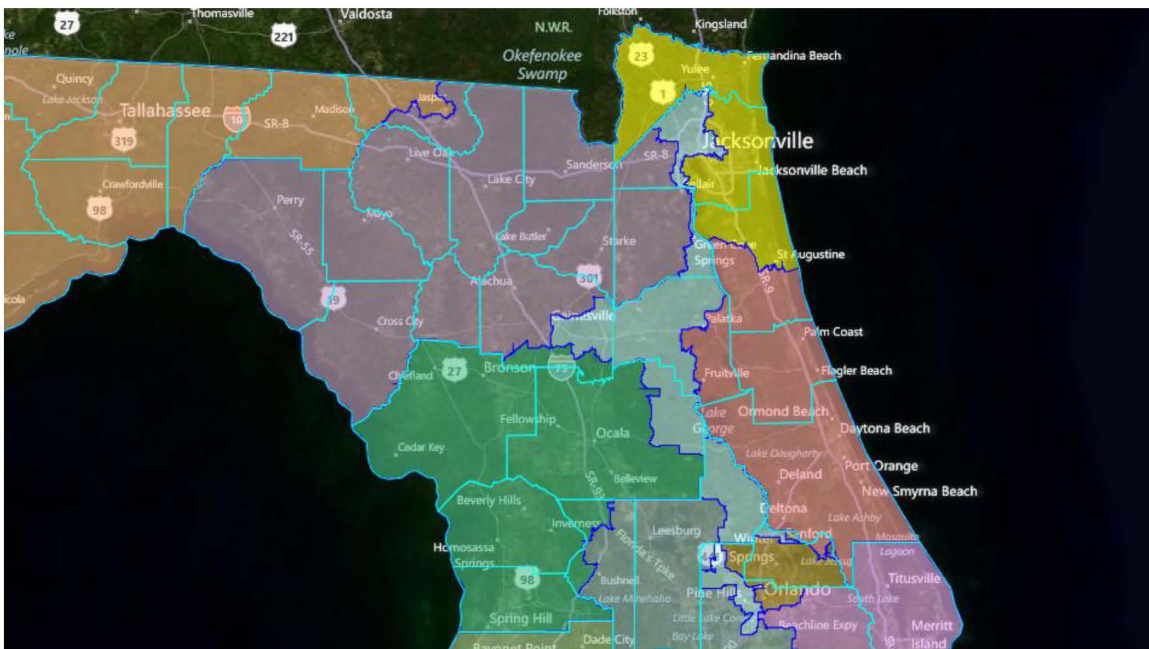
- Congressional District 26 (olive):
 - Population Deviation: 0.000%
 - Black VAP: 50.26%
 - Hispanic VAP: 10.22%

Black Minority Access District; Duval to Gadsden County: HPUBC0075



- Congressional District 2 (orange):
 - Population Deviation: -0.073%
 - Black VAP: 42.34%
 - Hispanic VAP: 5.50%

Black Minority Access District: HPUBC0019



- Congressional District 3 (light blue):
 - Population Deviation: 0.000%
 - Black VAP: 48.16%
 - Hispanic VAP: 10.24%

2. Two Districts in Duval County

Keeping the Second Jacksonville District Local: HPUBC0001

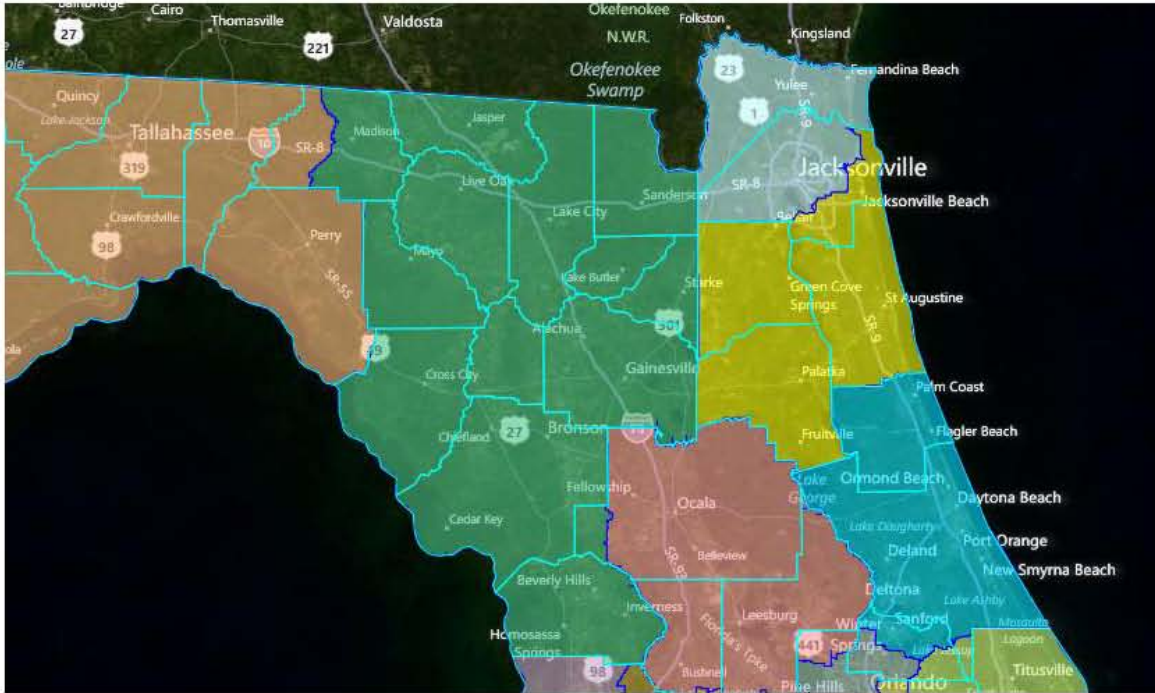


- Congressional District 24 (brown):
 - Population Deviation: 0.000%
 - Black VAP: 12.73%

- Hispanic VAP: 7.05%

3. How to Anchor Northeast Florida Seats

One Major Population Center per District: HPUBC0093

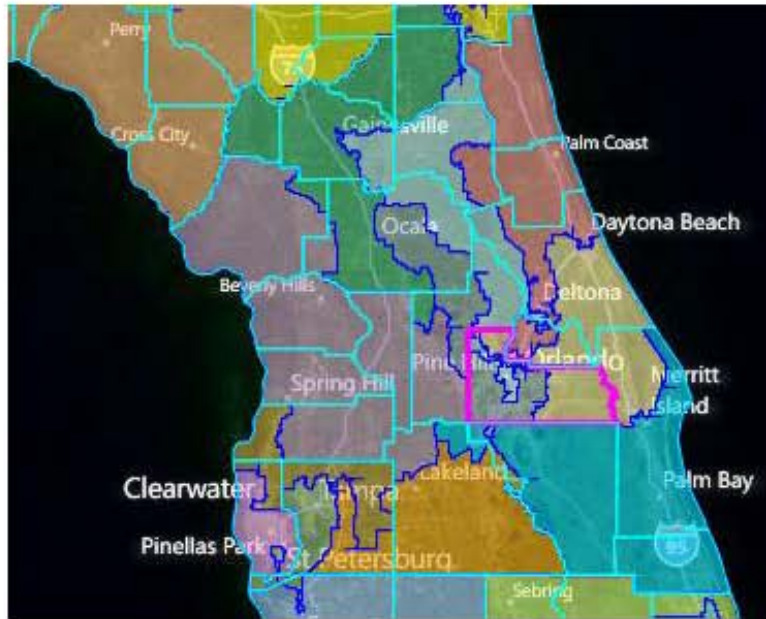


- Congressional District 3 (white):
 - Population Deviation: -570
 - Black VAP: 31%
 - Hispanic VAP: 6%
- Congressional District 4 (yellow):
 - Population Deviation: 727
 - Black VAP: 9%
 - Hispanic VAP: 6%
- Congressional District 6 (green):
 - Population Deviation: -221
 - Black VAP: 14%
 - Hispanic VAP: 5%

Orange County / Central Florida

- Lake County
- Polk County
- Osceola County

Current Congressional Map (2002)

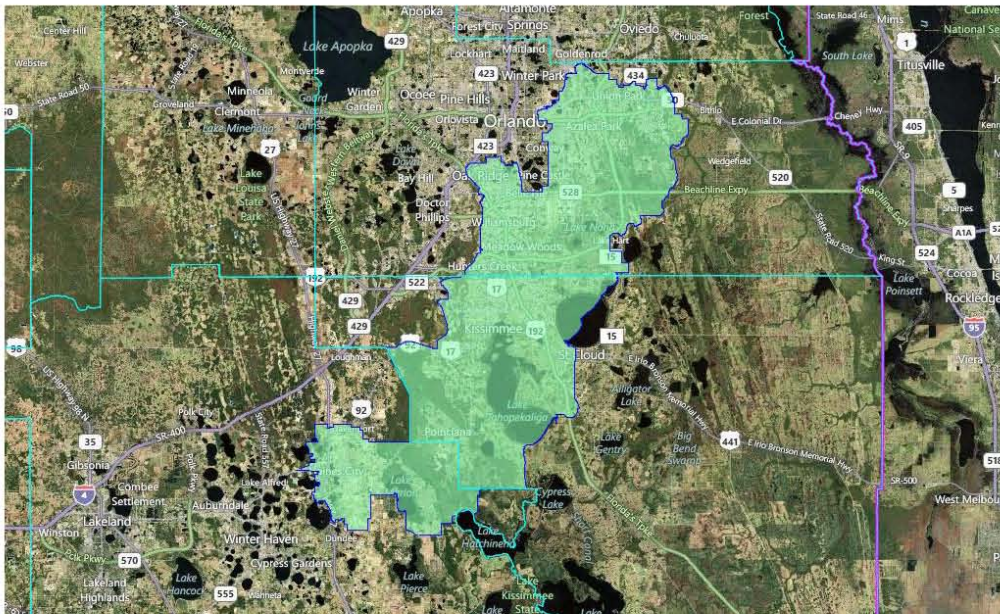


- Congressional District 3 (light blue):
 - Population Deviation: -5.355%
 - Black VAP: 49.87%
 - Hispanic VAP: 10.57%
- Congressional District 5 (purple):
 - Population Deviation: 33.487%
 - Black VAP: 6.12%
 - Hispanic VAP: 9.11%
- Congressional District 6 (green):
 - Population Deviation: 16.713%
 - Black VAP: 13.83%
 - Hispanic VAP: 7.92%
- Congressional District 7 (red):
 - Population Deviation: 16.672%
 - Black VAP: 9.77%
 - Hispanic VAP: 9.84%
- Congressional District 8 (gray):
 - Population Deviation: 15.691%

- Black VAP: 10.63%
- Hispanic VAP: 23.86%
- Congressional District 12 (orange):
 - Population Deviation: 20.946%
 - Black VAP: 15.32%
 - Hispanic VAP: 18.06%
- Congressional District 15 (blue):
 - Population Deviation: 16.834%
 - Black VAP: 9.47%
 - Hispanic VAP: 17.83%
- Congressional District 24 (tan):
 - Population Deviation: 14.775%
 - Black VAP: 8.81%
 - Hispanic VAP: 14.60%

1. Hispanic Minority Access Seat

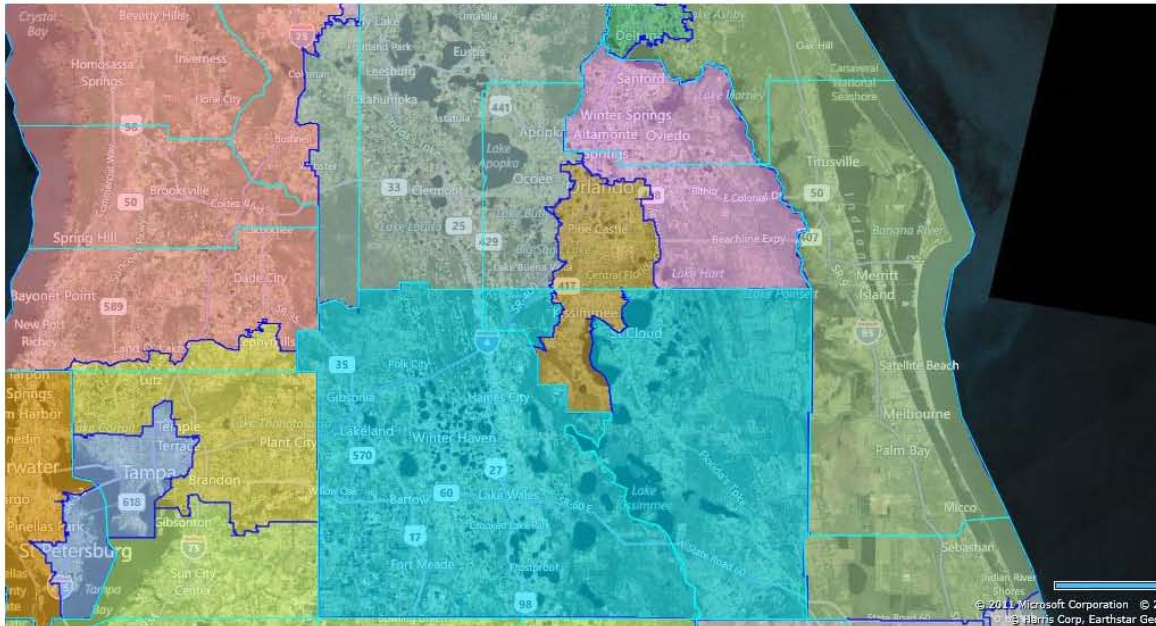
Hispanic Access Seat in Orange, Osceola and Polk Counties: HPUBC0023



- Congressional District 1 (green):
 - Population Deviation: 0.000%
 - Black VAP: 14.96%
 - Hispanic VAP: 43.38%

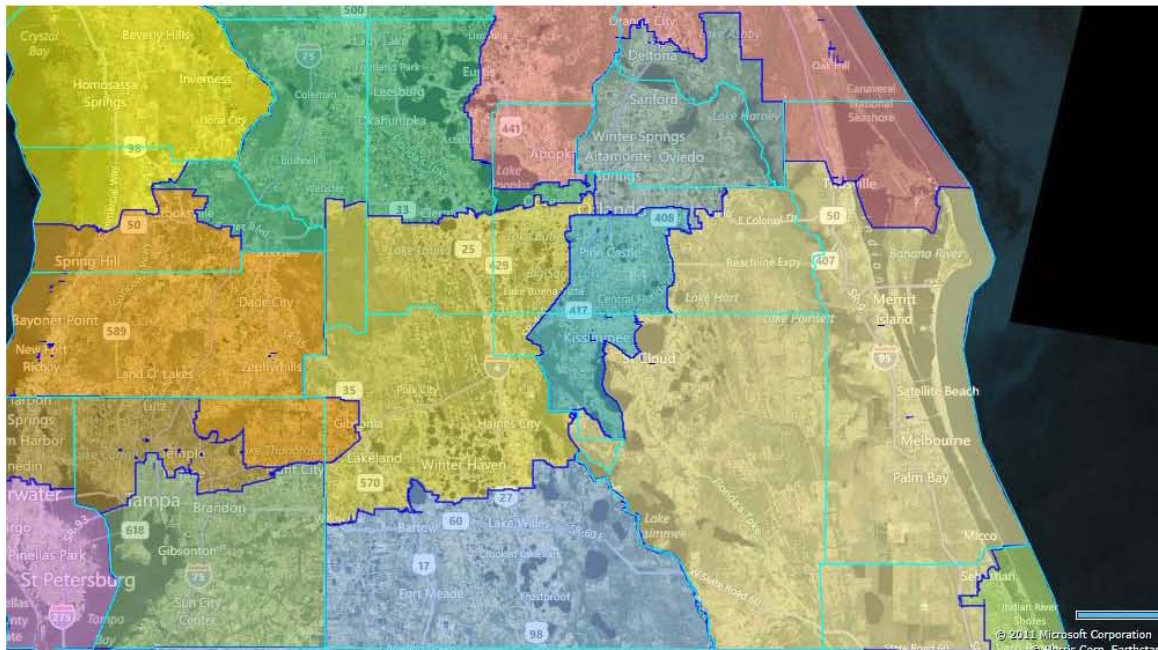
2. Orange County's Relationship with Lake, Osceola and Seminole Counties

Connecting Osceola with Polk County; Orange with Lake County; Orange with Seminole County
Hispanic Access Seat in Orange and Osceola Counties: HPUBC0069



- Congressional District 8 (gray):
 - Population Deviation: -0.001%
 - Black VAP: 16.53%
 - Hispanic VAP: 13.09%
- Congressional District 9 (pink):
 - Population Deviation: 0.001%
 - Black VAP: 20.76%
 - Hispanic VAP: 37.15%
- Congressional District 10 (green):
 - Population Deviation: -0.001%
 - Black VAP: 11.32%
 - Hispanic VAP: 18.48%
- Congressional District 15 (blue):
 - Population Deviation: -0.001%
 - Black VAP: 12.62%
 - Hispanic VAP: 15.90%

Connecting Osceola with Orange and Brevard Counties; Orange with Lake County; Orange with Seminole County; Orange County is Regionalized; Hispanic Access Seat in Orange and Osceola Counties;
 HPUBC0057



- Congressional District 6 (green):
 - Population Deviation: 0.035%
 - Black VAP: 13.76%
 - Hispanic VAP: 9.13%

- Congressional District 7 (pink):
 - Population Deviation: -0.179%
 - Black VAP: 11.16%
 - Hispanic VAP: 9.07%

- Congressional District 8 (gray):
 - Population Deviation: 0.157%
 - Black VAP: 10.62%
 - Hispanic VAP: 16.45%

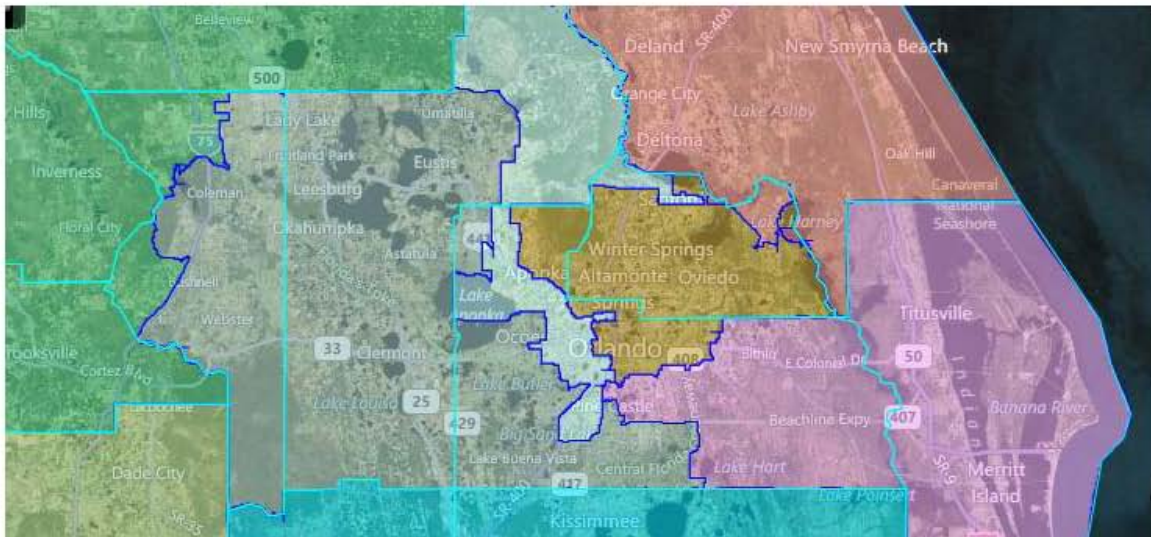
- Congressional District 14 (gold):
 - Population Deviation: 0.150%
 - Black VAP: 15.77%
 - Hispanic VAP: 14.81%

- Congressional District 24 (vanilla):
 - Population Deviation: -0.150%
 - Black VAP: 9.42%
 - Hispanic VAP: 11.87%

- Congressional District 27 (blue):
 - Population Deviation: 0.051%
 - Black VAP: 19.14%
 - Hispanic VAP: 38.40%

3. Black Minority Access Seat

Black Minority Access Seat: SPUBC0062



- Congressional District 3 (blue):
 - Population Deviation: 0.000%
 - Black VAP: 48.16%
 - Hispanic VAP: 10.24%

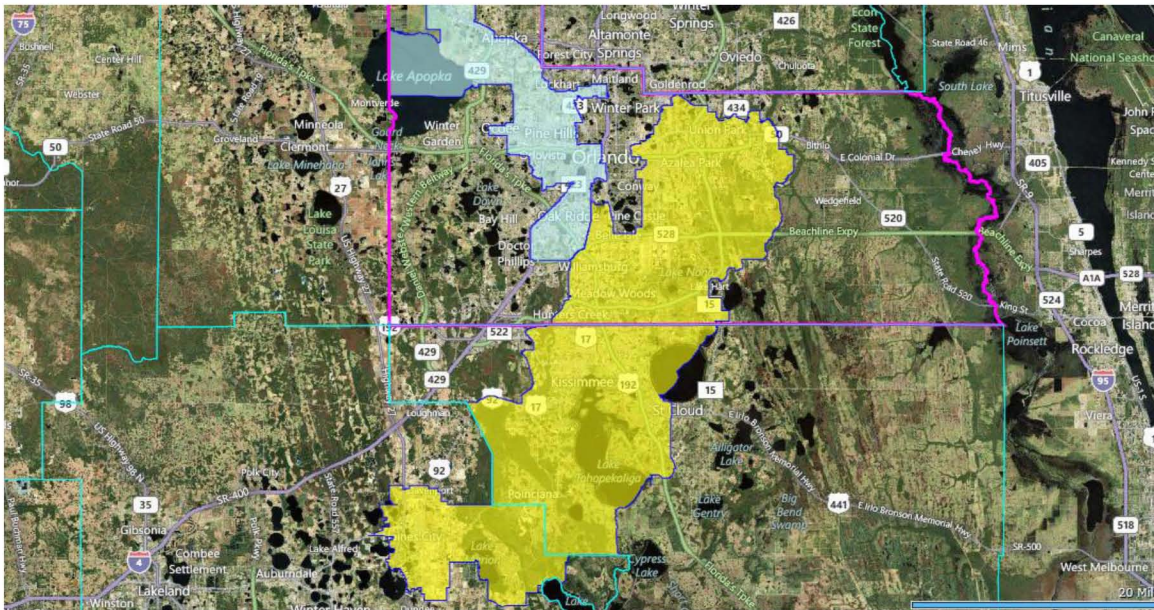
- Congressional District 8 (gray):
 - Population Deviation: 0.000%
 - Black VAP: 10.82%
 - Hispanic VAP: 17.59%

- Congressional District 9 (brown):
 - Population Deviation: 0.000%
 - Black VAP: 9.60%
 - Hispanic VAP: 18.84%

- Congressional District 10 (pink):
 - Population Deviation: 0.000%
 - Black VAP: 9.23%
 - Hispanic VAP: 15.29%

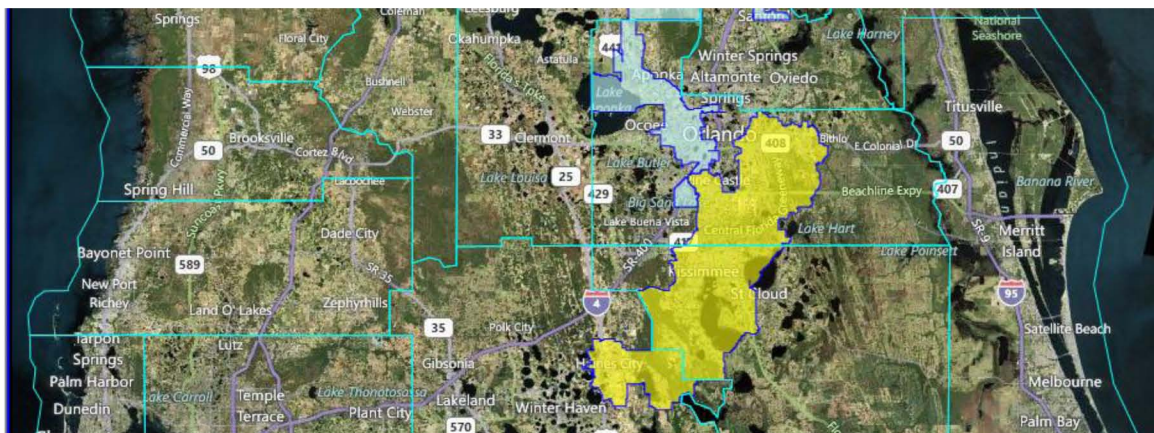
4. Both a Black Minority Access Seat and Hispanic Minority Access Seat

Black Access Seat from SPUBC0062 – locked; Hispanic Access Seat from HPUBC0023



- Congressional District 4 (yellow):
 - Population Deviation: -39,903
 - Black VAP: 13%
 - Hispanic VAP: 43%

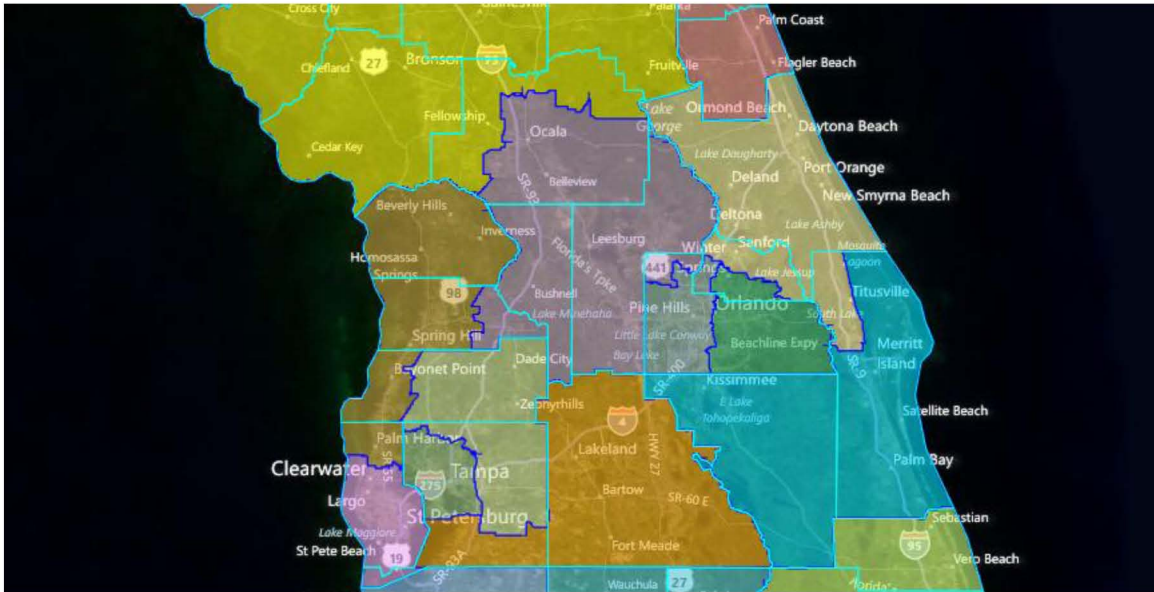
Black Access Seat from SPUBC0062; Hispanic Access Seat from HPUBC0023 – locked



- Congressional District 3 (blue):
 - Population Deviation: -39,903
 - Black VAP: 48%
 - Hispanic VAP: 8%

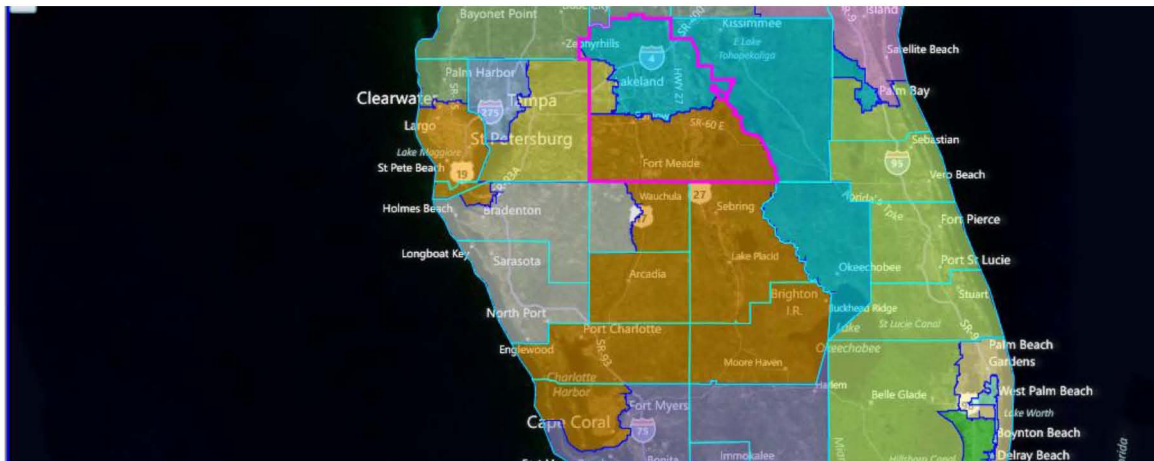
5. Lake and Polk Counties

Keeping the Majority of Lake, Marion and Sumter Counties Together;
Polk County in One District; SPUBC0051



- Congressional District 5 (purple):
 - Population Deviation: 1.550%
 - Black VAP: 10.23%
 - Hispanic VAP: 9.07%

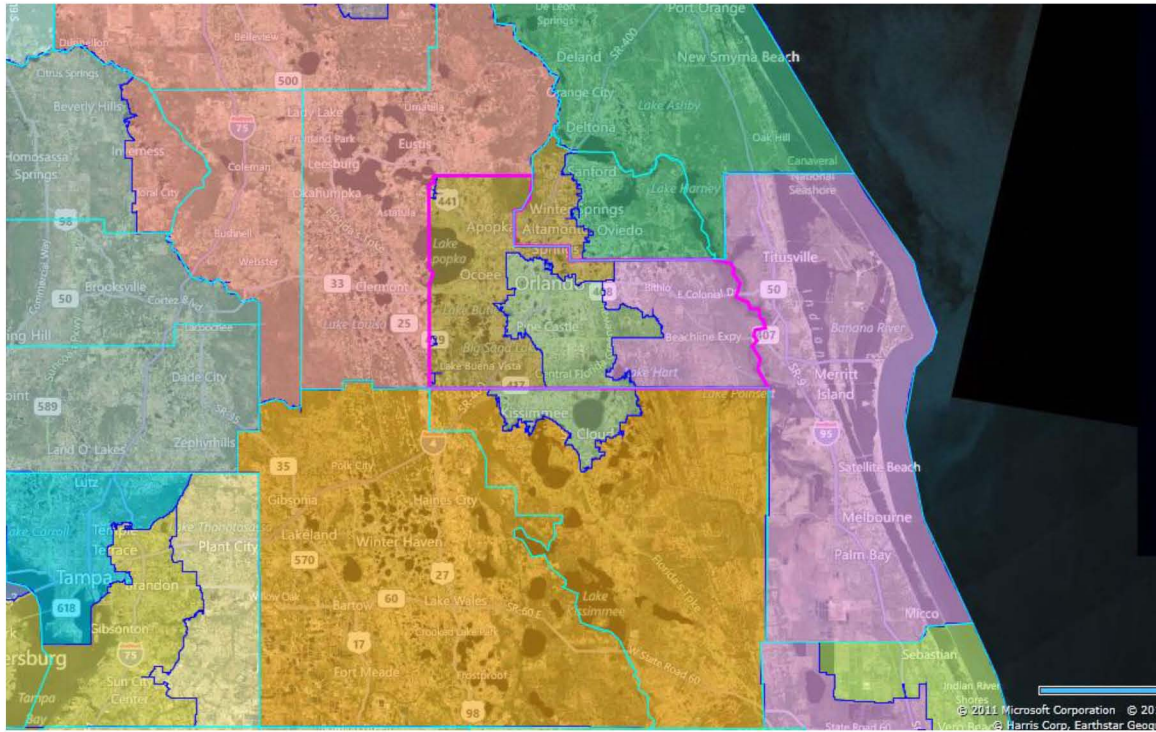
Southern Polk County with Rural Communities: HPUBC0019



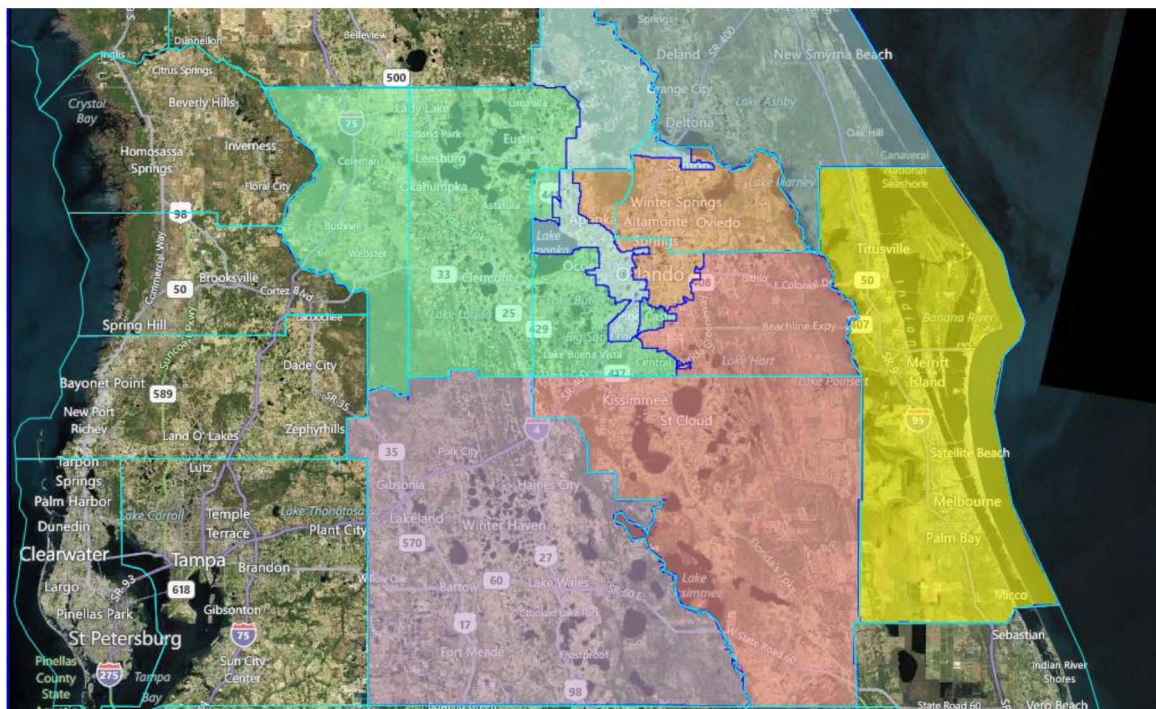
- Congressional District 19 (orange):
 - Population Deviation: 0.000%
 - Black VAP: 6.85%
 - Hispanic VAP: 13.06%

6. Starting the Map in Central Florida

Orange County split Three Ways; Polk Whole; Lake Whole; Brevard Whole, Volusia Whole, Seminole Split Two Ways; Osceola Split Two Ways; Eliminates Black Access District: HPUBC0031



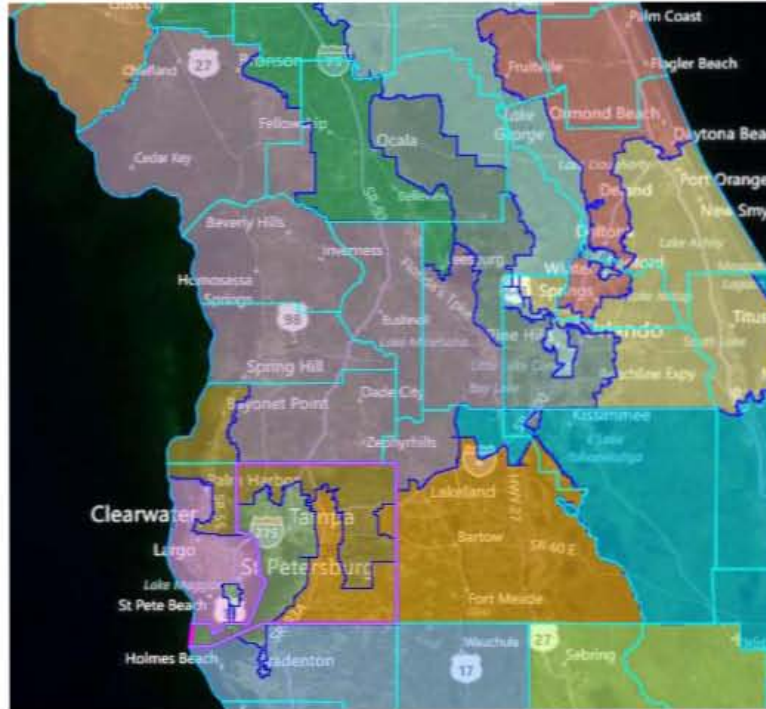
Combining the Black Access District in SPUBC0062 with the framework of Central Florida in HPUBC0031



Hillsborough County and Pinellas County

- Pasco County

Current Congressional Map (2002)

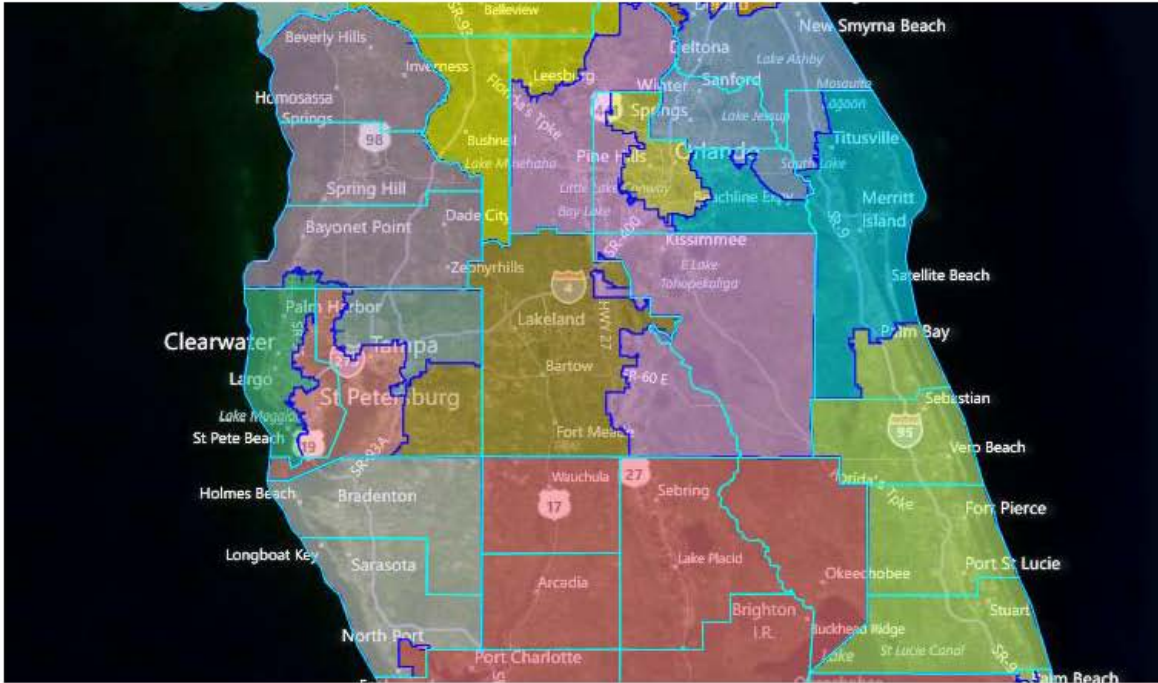


- Congressional District 5 (purple):
 - Population Deviation: 33.487%
 - Black VAP: 6.12%
 - Hispanic VAP: 9.11%
- Congressional District 9 (brown):
 - Population Deviation: 8.215%
 - Black VAP: 5.66%
 - Hispanic VAP: 11.73%
- Congressional District 10 (pink):
 - Population Deviation: -8.969%
 - Black VAP: 5.19%
 - Hispanic VAP: 6.48%
- Congressional District 11 (dark green):
 - Population Deviation: -3.238%
 - Black VAP: 26.78%
 - Hispanic VAP: 25.84%
- Congressional District 12 (orange):

- Population Deviation: 20.946%
- Black VAP: 15.32%
- Hispanic VAP: 18.06%

1. How to Anchor Seats in Tampa Bay

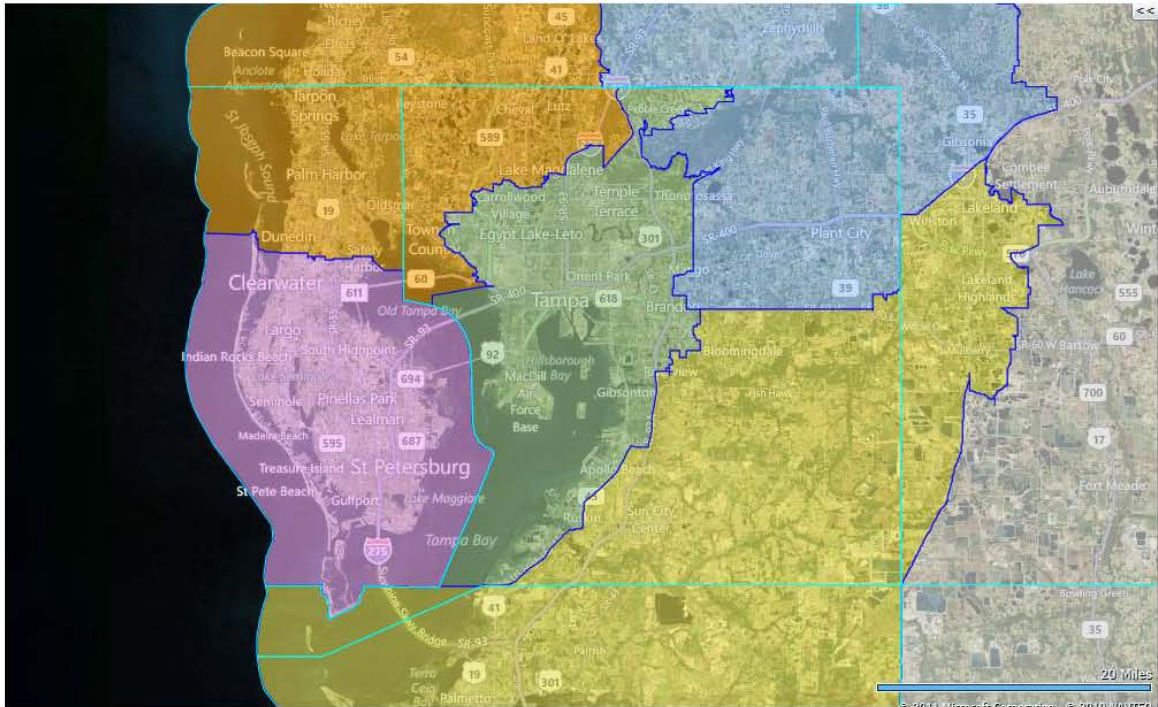
Pinellas County with Nearly One Whole District; Hillsborough County with One Whole District; Pinellas and Hillsborough County Split Another District; Pasco, Hernando and Citrus Counties Nearly Entirely in One District; Manatee and Sarasota Counties Nearly Entirely in One District: HPUBC0041



- Congressional District 5 (purple):
 - Population Deviation: 0.022%
 - Black VAP: 4.26%
 - Hispanic VAP: 8.56%
- Congressional District 6 (green):
 - Population Deviation: -0.035%
 - Black VAP: 5.06%
 - Hispanic VAP: 6.88%
- Congressional District 7 (pink):
 - Population Deviation: -0.014%
 - Black VAP: 17.72%
 - Hispanic VAP: 14.22%
- Congressional District 8 (gray):
 - Population Deviation: 0.002%
 - Black VAP: 16.53%

- Hispanic VAP: 25.56%
- Congressional District 18 (white):
 - Population Deviation: 0.046%
 - Black VAP: 5.84%
 - Hispanic VAP: 8.92%

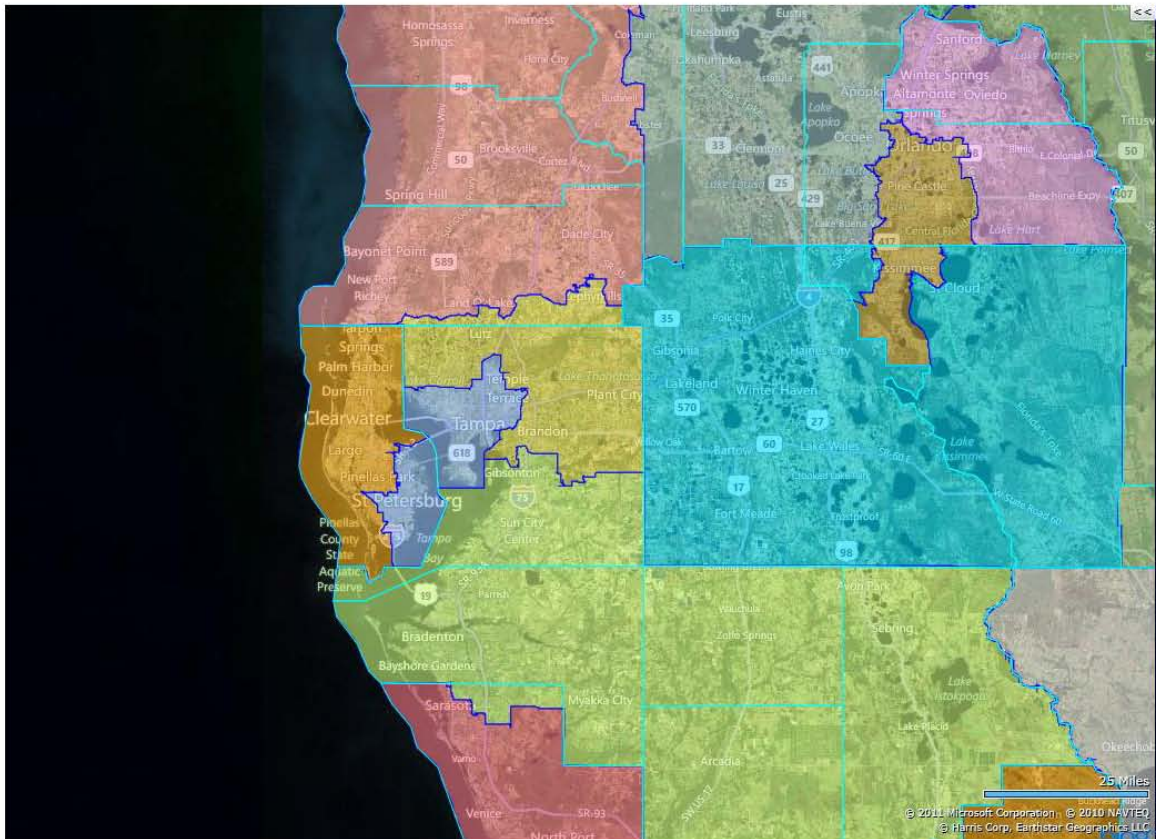
Did Not Cross Any Bridges; Pinellas County with One Whole Districts; Hillsborough County with One Whole District; Build from Southern Pinellas, Go North, Come Back Around Bay: SPUBC0077



- Congressional District 10 (pink):
 - Population Deviation: 0.000%
 - Black VAP: 11.33%
 - Hispanic VAP: 7.08%
- Congressional District 11 (green):
 - Population Deviation: -0.007%
 - Black VAP: 21.65%
 - Hispanic VAP: 26.31%
- Congressional District 12 (orange):
 - Population Deviation: -0.004%
 - Black VAP: 3.82%
 - Hispanic VAP: 9.48%
- Congressional District 13 (blue):
 - Population Deviation: -0.004%

- Black VAP: 6.43%
- Hispanic VAP: 11.36%
- Congressional District 14 (yellow):
 - Population Deviation: 0.000%
 - Black VAP: 9.96%
 - Hispanic VAP: 13.72%

Minority Access: HPUBC0069

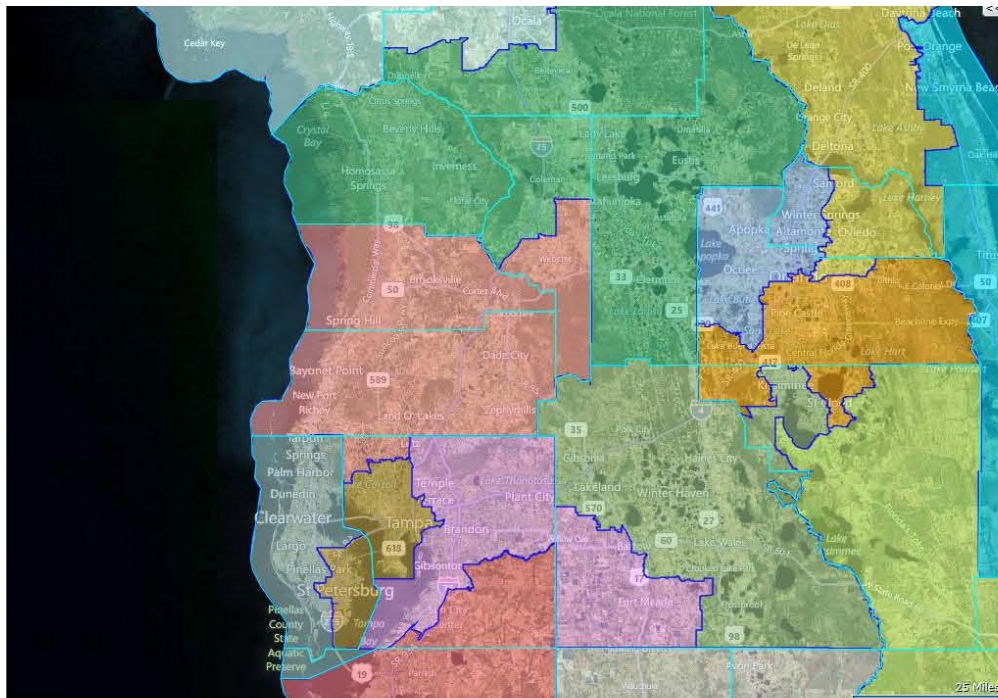


- Congressional District 12 (orange):
 - Population Deviation: 0.000%
 - Black VAP: 4.86%
 - Hispanic VAP: 7.01%
- Congressional District 13 (blue):
 - Population Deviation: 0.001%
 - Black VAP: 23.62%
 - Hispanic VAP: 21.26%
- Congressional District 14 (yellow):
 - Population Deviation: -0.001%
 - Black VAP: 10.48%

- Hispanic VAP: 17.82%
- Congressional District 16 (green):
 - Population Deviation: 0.000%
 - Black VAP: 8.91%
 - Hispanic VAP: 15.46%

2. Alternative for Pasco County and North of Tampa Growth

Pasco with Hernando and Southern Sumter Counties; The Villages Whole in a District with Citrus County;
Coastline Blocked: HPUBC003



- Congressional District 6 (green):
 - Population Deviation: 0.000%
 - Black VAP: 7.57%
 - Hispanic VAP: 7.96%
- Congressional District 7 (pink):
 - Population Deviation: 0.000%
 - Black VAP: 4.61%
 - Hispanic VAP: 9.80%
- Congressional District 8 (gray):
 - Population Deviation: 0.000%
 - Black VAP: 6.12%
 - Hispanic VAP: 6.95%

- Congressional District 9 (brown):
 - Population Deviation: 0.000%
 - Black VAP: 16.85%
 - Hispanic VAP: 21.58%

- Congressional District 10 (purple):
 - Population Deviation: 0.000%
 - Black VAP: 17.93%
 - Hispanic VAP: 19.16%