

THE FLORIDA SENATE

1996-1998

SEAL OF THE FLORIDA SENATE

The 1972 Senate adopted a new official Senate seal. The perimeter of the seal contains the words "Senate" and "State of Florida." The center contains a fan of the five flags which have flown over Florida, above a disc containing the words, "In God We Trust," arched above a gavel, quill, and scroll — symbols of the Legislature. The quill depicts the writing of laws; the gavel depicts control or authority in the presiding officer; and the scroll depicts the parchment on which laws are permanently written. It is this body of written law upon which rests the very foundation of this nation's "rule of law," as opposed to "rule of men."



MESSAGE FROM THE PRESIDENT



TONI JENNINGS
President of the Senate

Welcome to the Florida Senate. As one of the Florida Legislature's two houses, the Senate is often referred to as the "upper house" because its smaller membership serves longer terms and Senators represent a larger constituency than members of the House of Representatives. Though elected under partisan banners, the Senate is more collegial in nature. During the 1996-1998 term, inclusiveness and governing by consensus will outweigh individual agendas.

The Senate will focus on the issues of improving our public education system, creating sufficient and meaningful job opportunities, making government less intrusive and more efficient, and protecting our citizens while in their homes and on our streets.

The Senators you will read about in this handbook are part of a forty-member team who will shape Florida's future as we prepare to meet the 21st Century.

Come along with us. Participate in your government by letting those who represent you know your thoughts on the important issues of the day. Effective government is a two-way street. Let us hear from you. Together we can make a better Florida!

A handwritten signature in black ink that reads "Toni Jennings". The signature is fluid and cursive, with a large initial "T" and "J".

THE FLORIDA SENATE

When the first Senate was convened on January 7, 1839 — six years before Florida became a state — no business could be transacted because only seven of the sixteen Senators were present. There was no quorum of Senators for three of the first four days, and it was not until the fifth day of the first session that Territorial Governor Richard Keith Call addressed the Senate and the House of Representatives in joint session.

Since the beginning days, the Senate has evolved into a highly organized, smoothly functioning legislative body that meets annually to conduct the people's business. There is a year-round staff of committees to conduct vital research and prepare for the legislative sessions. The legislative branch is now equal to the executive and the judicial branches in function as well as in theory.

“Once a Senator, always a Senator” is a catchy phrase of good fellowship that conveys something of the philosophy of the Senate.



Newly elected Senate President Toni Jennings addresses the Senate at the November 19, 1996, Organization Session.

The Florida Senate today is made up of 40 members, each elected from a single district representing more than 323,448 Florida citizens. Each Senator is elected for a four-year staggered term and may be elected for more than one term, but may not seek reelection if at the end of his current term he has served eight consecutive years (see Article VI, section 4, State Constitution). The State Constitution specifies that Senators must be at least twenty-one years of age, must be registered voters, must be residents of the districts from which they are elected, and must have resided in Florida for two years prior to their election.

While members of the other branches of government devote full time to public service, the Legislature maintains its identity as the “citizen” branch. Almost all of the Senators are occupied in a business or profession when they are not carrying out their legislative duties.

The 1996-1998 Senate membership includes 34 men and 6 women. There are 23 Republicans and 17 Democrats whose professions or occupations include law, medicine, banking, business, agriculture, and industry. The average Senator is about 51 years old, is married and has children. Thirty-seven of the Senators have college degrees and 36 have held other public offices before they were elected to the Senate. Fourteen Senators served in the House of Representatives prior to their election to the Senate. Others have served in local governments. The Senate is presided over by a President elected by the members of the Senate for a two-year term. Also elected for a two-year term is the President Pro Tempore. The President for the 1996-1998 term is Senator Toni Jennings from Orlando, a 16-year veteran in the Senate. The President Pro Tempore is Senator Roberto Casas from Hialeah, who has served in the Senate since 1988.

Additional information on these officers and the other members of the Senate is contained on the following pages of this booklet. The booklet also outlines and describes the Senate and its operation and its relationship to the other House of the Legislature and the other two branches of Florida government.

ELECTED OFFICERS OF THE FLORIDA SENATE



Toni Jennings
Republican, District 9
President

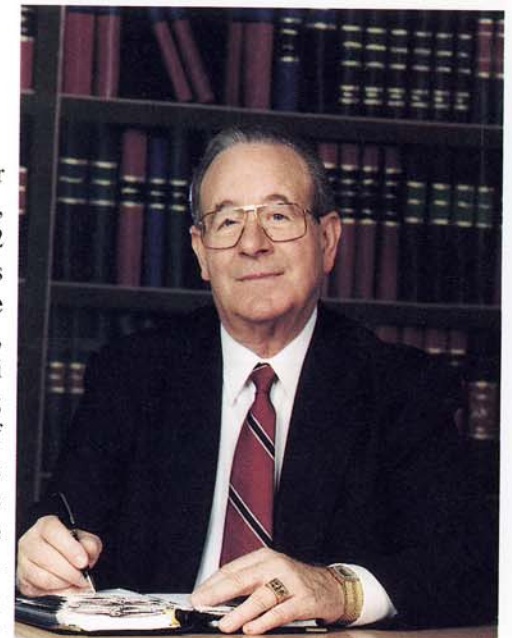
Construction, Realtor **born** May 17, 1949 in Orlando **education** Wesleyan College, B.A., 1971; Rollins College, 1972; Phi Kappa Phi, Kappa Delta Epsilon, Mortar Board, Honor Court **affiliations** Metropolitan Urban League, Inc., honorary board member; Orlando Area Board of Realtors; Associated Builders and Contractors; Central Florida Builders Exchange; Delta Kappa Gamma Society International; Salvation Army Advisory Board **legislative service** House of Representatives, 1976-1980;

elected to the Senate in 1980, reelected subsequently; Senate Republican Leader, 1984 and 1986-1988; Republican Leader Pro Tempore, 1982-1983 and 1985-1986; Orange County Legislative Delegation Chairman: 1980-1982, 1985-1986, 1991-1992; Seminole County Legislative Delegation: Chairman, 1990-1991, 1991-1992; President, 1996-1998 **highlights** Florida Bankers Association Award, 1997; National Multiple Sclerosis Society, Hope Award; Women's Resource Center's Summit Award; Florida Sheriffs Legislative Award; Florida Home Builders Association, "Legislator of the Year" Award, 1994; National Associated Builders and Contractors, Distinguished Service Award; Florida Chamber of Commerce, Award for Economic Development; National Federation of Independent Businesses, Florida Guardian of Small Business Award; National Republican Legislators Association, 2nd Annual "Frank J. Fahrenkopf, Jr., Award," Outstanding State Minority Leader; Missing Children Help Center, Tampa Chapter, Outstanding Efforts for the "Voice of the Missing Child" **historical** Jack Jennings, father, Orange County School Board Chairman. Charles H. Jennings, great-grandfather, was a member of Virginia Legislature. General Edward Martin, great-uncle, Governor of Pennsylvania **religious affiliation** Episcopal **recreation** bicycling **addresses** (district) 1032 Wilfred Drive, Orlando 32803-2571 (Tallahassee) 322 Senate Office Building, 32399-1100 **telephones** (district) 407/898-1861 (Tallahassee) 904/487-5050.

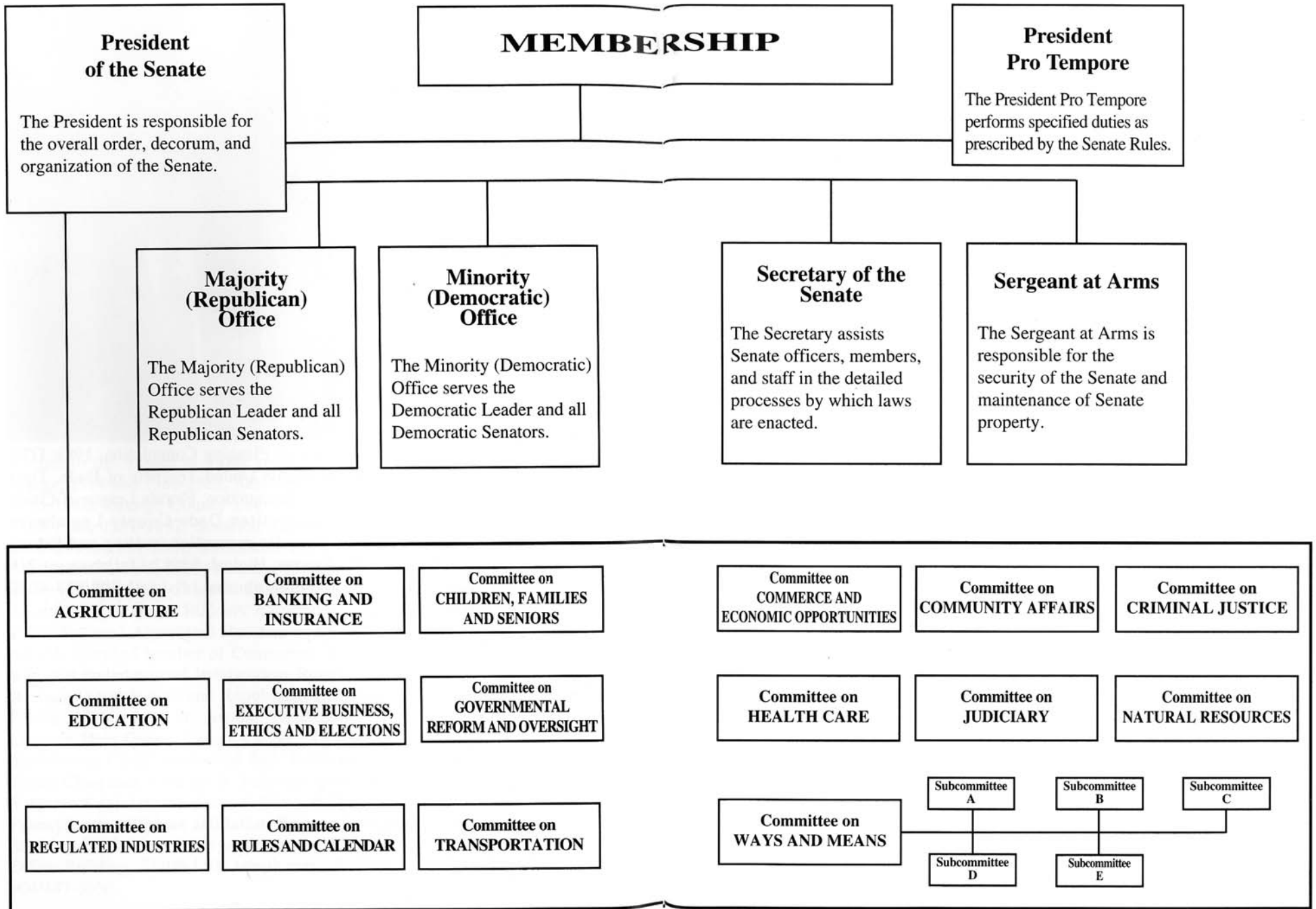
Roberto Casas
Republican, District 39
President Pro Tempore

Real Estate Broker, Investor **born** April 25, 1931 in Havana, Cuba. Moved to Florida in 1962 **education** Havana Business University, B.A., 1954 **wife** Violeta Colominas of Matanzas, Cuba **affiliations** Hialeah-Miami Springs Chamber of Commerce; Hialeah-Miami Springs Board of Realtors; Miami Lions Club; Flamingo Kiwanis Club; Knights of Columbus **legislative service** House of Representatives, 1982-1988; elected to the Senate in 1988, reelected subsequently

other public service Secondary Education Planning Commission, 1983; OTB International Trade Commission **highlights** United Teachers of Dade, Tiger Award; South Hialeah Elementary PTA Recognition; Florida League of Cities, Prominent Personality, 1985; Metropolitan Dade County Legislative Appreciation **religious affiliation** Catholic **recreation** hunting and fishing **addresses** (district) 4821 W. 4th Avenue, Hialeah 33012 (Tallahassee) 216 Senate Office Building, 32399-1100 **telephones** (district) 305/827-4040 (Tallahassee) 904/487-5106.



SENATE ORGANIZATION



MEMBERS OF THE SENATE



William G. (Bill) Bankhead
Republican, District 8

Manager, CSX Transportation, Real Estate Sales Administration **born** January 15, 1941 in Americus, Georgia. Moved to Florida in 1944 **education** Englewood High School, Jacksonville, 1959; University of Florida, B.S., Business Administration, 1963 **wife** Diana O'Quinn of Callahan **children** William G. III and Diana Brooke **affiliations** honorary member, Jacksonville Power Squadron, 1992; life member, University of Florida Real Estate Fraternity; member, Young

Republicans, Advisory Board; member, National Republican Legislators Association; member, Alimacani Local School Advisory Council, 1991-1994; member, American Legislative Exchange Council; member, Freedoms Foundation at Valley Forge; president, Saturday Morning Toastmasters, 1977; president, Civic Round Table, 1976; regional director, Florida Jaycees, 1975-1976; president, Jacksonville Jaycees, 1973-1974 **legislative service** House of Representatives, 1978-1988, Minority Whip; elected to the Senate in 1988, reelected subsequently **other public service** Mayor's Drug Abuse Advisory Council, 1971 **highlights** Health and Human Services Board and District 4 of the Department of Health and Rehabilitative Services, Certificate of Appreciation, 1996; Florida Council on Aging, Jacksonville Chapter, 1996 Outstanding Legislator; Florida Pharmacy Association, 1996 Legislative Excellence Award; Florida AHEC Network, 1996 Distinguished Service Award; Florida Ports Council, 1996 "Tugboat" Award; Florida Chiropractic Association, 1996 D.I. Rainey Legislative Award; *Wall Street Journal*, 1996 "Rising Star"; Florida Health Care Association, 1996 Legislator of the Year Award; Florida Restaurant Association, 1995 Legislative Recognition Award; Florida Pharmacy Association, 1995 Outstanding Legislator Award; Florida Council for Community Mental Health, 1995 Legislator of the Year Award; Charles Dick Medal of Merit, National Guard Association of the United States, 1992; recognized by the Florida Poison Information Center in 1992; Florida Distinguished Service Medal from the National Guard, 1991; Duval County Medical Society, Legislative Stethoscope Award, 1991; 1990 "Distinguished Legislator Award," Florida Network of Youth and Family Services; 1990 Guardian of Small Business Award, National Federation of Independent Businessmen; Florida Sheriffs Association, Legislative Award, 1988 **military service** Florida Army National Guard, 1964-1969 **religious affiliation**

Presbyterian, Deacon **recreation** travel, photography, and government **addresses** (district) P.O. Box 41624, Jacksonville 32203-1624 (Tallahassee) 305 Senate Office Building, 32399-1100 **telephones** (district) 904/359-1014, 800/258-0941 (Tallahassee) 904/487-5030.



Charles H. (Charlie) Bronson, Jr.
Republican, District 18

Rancher **born** September 15, 1949 in Kissimmee **education** University of Georgia, B.S.A., 1973 **wife** Regina Bolden of Macon, Georgia **children** Michelle, Melanie **affiliations** Republican Men's Club of Brevard; Florida Cattlemen's Association **legislative service** elected to the Senate in 1994 **other public service** Water Management District Review Commission, 1995-1996; Agriculture and Rural Development Committee of the Southern Legislative Conference, 1995-present; Recycling

Markets Advisory Committee, 1995-present; Spaceport Florida Authority, 1995-present; Chairman, Brevard County Republican Party, 1992-1994; appointed by President George Bush to Rural Telephone Bank Board, 1990-1995; Republican State Committeeman, Brevard County, 1988-1992; Republican Party of Florida, Executive Committee, 1988-present; Brevard County Sheriff's Department, Reserve Deputy, 1982-present; Dade County Reserve Deputy, 1978-1979 **highlights** Florida Farm Bureau Federation, Legislative Award, 1996; Florida Aquatic Plant Management Society, Inc., Legislative Environmental Leadership Award, 1996; The Greater Osceola County-St. Cloud Chamber of Commerce, Good Government Award, 1996; Florida Fruit and Vegetable Association, Outstanding Legislator Award, 1996; Florida Medical Association, Inc., Legislative Appreciation Award, 1996; Florida Sheriffs, Legislative Award, 1995 and 1996; Florida Veterinary Medical Association, Legislative Award, 1995; Printing Association of Florida's Paul Revere Award, 1995; South Brevard Beaches Jaycees, Outstanding Young Farmer Award, 1986 **religious affiliation** Methodist **recreation** hunting and fishing **addresses** (district) Suite 2, 1300 Pine Tree Drive, Indian Harbour Beach 32937; 1322 10th Street, St. Cloud 34769 (Tallahassee) 356 Senate Office Building, 32399-1100 **telephones** (district) 407/779-1155; 407/846-5275; (district-wide) 800/843-2945 (Tallahassee) 904/487-5056.



Ginny Brown-Waite
Republican, District 10

Legislator **born** October 5, 1943 in Albany, New York. Moved to Florida in 1986 **education** State University of New York, B.S., 1976; Russell Sage College, M.S., 1984; Cornell University, Certificate Program, 1980 **husband** Harvey Waite of Albany, New York **children** Jeannine Roxby-Waite, Danene Mitchell, and Lorie Sue Meaders **affiliations** B.P.W.; Suncoast MG Club; West Hernando GOP; Board member, Hernando Spouse Abuse Shelter; former treasurer, United Way

legislative service elected to the Senate in 1992; reelected subsequently **other public service** Hernando County Commissioner; Legislative Director, New York State Senate **highlights** various community awards: Spring Hill Civic Association, Florida Association of Community Health Centers, Pasco-Hernando Community College, American Lung Association, American Heart Association, American Cancer Society; member of Board of Directors, National Order of Women Legislators; Business and Professional Women, Woman of the Year; Florida League of Cities, Quality Floridian Award; Florida Trial Attorneys, Consumer Rights Award; Florida Public Health Association, Outstanding Legislator; Mothers Against Drunk Driving, Legislative Excellence; American Business Women's Association, Associate of the Year; Redlands Christian Migrant Association, Exceptional Moments in Good Government; Florida Medical Association, Leadership Award; Florida Sheriffs Association, Legislative Award; Florida Conservation Association Award **religious affiliation** Catholic **recreation** reading and computer work **addresses** (district) 20 North Main Street, County Office Building, Rm. 200, Brooksville 34601 (Tallahassee) 316 Senate Office Building, 32399-1100 **telephones** (district) 352/544-2344 (Tallahassee) 904/487-5040.



Locke Burt
Republican, District 16
Republican Leader

Insurance Executive; President, Ormond Re Group, Inc. **born** February 19, 1948 in Des Moines, Iowa. Moved to Florida in 1959 **education** Northwestern University, B.S.B.A., 1969; M.B.A., 1970; Loyola University, J.D., 1974 **wife** Ann E. Snyder of Milwaukee, Wisconsin **children** Melissa, 18 and Thomas, 17 **affiliations** member: The Florida Bar, American Bar Association, Illinois Bar Association, Volusia County Bar Association

legislative service elected to the Senate, July 30, 1991, reelected subsequently; Senate Majority Whip, 1996 **other public service** chairman, Local Government Study Commission, 1982-1984; member, Citizens Advisory Committee on Fiscal Policy and Productivity, 1991 **highlights** The Governor's Administrative Procedure Act (APA) Review Commission, 1996; Florida Sentencing Guidelines Commission, 1996; Florida Sheriffs Association, Legislative Award, 1996; Florida Council on Crime and Delinquency Chapter XVII, Distinguished Service Award, 1996; Printing Association of Florida, The Paul Revere Award, 1996; Florida Economic Development Council, Legislator of the Year Award, 1996; Florida Association of Counties, County Champion Award, 1995; Senator of the Year, Florida Sheriffs Award, 1995; HRS District 12, Outstanding Leadership Award, 1995; Florida Prosecuting Attorneys Association, Furtherance of Justice Award, 1995; Man of the Year, Daytona Beach Chamber of Commerce, 1986; Good Government Award, Daytona Beach Jaycees, 1985; Florida Association of Domestic Insurance Companies, Distinguished Service Award, 1982 **religious affiliation** Episcopal **recreation** sailing and golf **addresses** (district) 140 S. Atlantic Avenue, Suite 205, Ormond Beach 32176; 838 E. New York Avenue, Suite B, DeLand 32724 (Tallahassee) 346 Senate Office Building, 32399-1100 **telephones** (district) 904/673-7299 or 904/738-9002 (Tallahassee) 904/487-5033.



Walter G. (Skip) Campbell, Jr.
Democrat, District 33

Attorney **born** November 12, 1948 in Rockaway Beach, New Jersey. Moved to Florida in 1961 **education** St. John Vianney Seminary, A.A., 1968; University of Florida: B.A., 1970, J.D., 1973; Alpha Epsilon Delta (pre-med); Phi Delta Phi; Beta Theta Phi **wife** Lynn Satin of Miami Beach **children** Christina, 18; Daniel, 13 **affiliations** Democratic Party; local chairman, National Multiple Sclerosis Society **legislative service** elected to the Senate in 1996 **other public service**

Florida Elections Commission **highlights** National Multiple Sclerosis Society, Hope Award; listed in *The Best Lawyers In America*; Coral Springs Economic Development Foundation, Achievement Award; Broward Lawyers Care, Outstanding Contribution insuring equal access to the legal system for economically disadvantaged of our community **religious affiliation** Catholic **recreation** golf **addresses** (district) 10094 McNab Road, Tamarac 33321 (Tallahassee) 254 Senate Office Building, 32399-1100 **telephones** (district) 954/346-2813 (Tallahassee) 904/487-5094

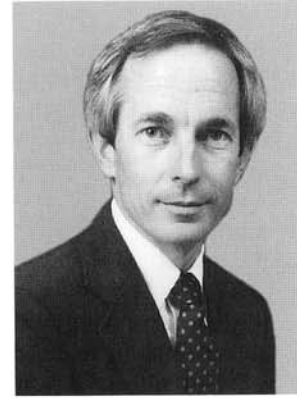


W. D. Childers
Republican, District 1
Dean of the Senate

Businessman **born** November 25, 1933 in Okaloosa County **education** Florida State University, B.S., 1955 **wife** Ruth A. Johnson of Wakeeney, Kansas **children** Gail, Jeanna, Karen, and Marvel; grandchildren: Mandy, Jamie, Max, Hailey, Bradley, Brandon and Hannah **affiliations** Lions Club; Farm Bureau; Masonic Lodge #348 **legislative service** elected to the Senate in 1970, reelected subsequently: President 1980-1982; Dean

of the Senate **highlights** NRA Legislator of the Year Awards; Florida Association of Realtors Legislator of the Year Award; Unified Sportsmen Service Award, several years; Florida Jaycees Governmental Affairs Appreciation Award; Distinguished Service Award for representing the interests of Northwest Florida in the Florida Legislature; Florida Blue Key Honorary Membership; University of West Florida Government Award for Outstanding Leadership and Service; Florida State University and the Florida State University Alumni Association recognition of Outstanding Professional and Public Service Achievements; Allen Morris Awards: Most Effective in Debate,

three times; Most Effective in Committee; Most Effective Member of the Senate; Former school teacher and retail business owner; various other awards not listed **religious affiliation** Baptist **recreation** fishing, hunting, and camping **addresses** (district) 2889 Michigan Avenue, Pensacola 32526 (Tallahassee) 205 Senate Office Building, 32399-1100 **telephones** (district) 904/944-3900 (Tallahassee) 904/487-5000.



Charles W. (Charlie) Clary III
Republican, District 7

Architect **born** June 24, 1950 in Crestview **education** Auburn University: B.A., Architecture, Environmental Design, 1977 **wife** Beth Graham of Ft. Walton Beach **children** Joanna, 16; Laura, 13 **affiliations** Destin Kiwanis Club, past president; Salvation Army Advisory Board; YMCA Board; Destin Chamber of Commerce; Ft. Walton Beach Chamber of Commerce; Submarine Veterans; American Legion **legislative service** elected to the Senate in 1996 **other public service** Councilman,

City of Destin, 6 years **highlights** Destin Kiwanis, Distinguished President's Award **military service** U.S. Navy: Submarine service, 4 years active and 2 years inactive **religious affiliation** Baptist **recreation** fishing, pen and ink sketching, and photography **addresses** (district) P.O. Box 277, Destin 32540 (Tallahassee) 328 Senate Office Building, 32399-1100 **telephones** (district) 904/833-9159 (Tallahassee) 904/487-5009.



Anna P. Cowin
Republican, District 11

Educator **born** May 23, 1946 in Brooklyn, New York. Moved to Florida in 1980 **education** College of New Rochelle, New York, B.A., 1968; Fordham University, New York, M.S.; Beta Beta Beta National Biology Honor Society; Sigma Xi Biological Research Society **husband** Dr. John A. Cowin of Leesburg **children** David, Lynda, and Scott **affiliations** Leesburg Area Chamber of Commerce, president and member; Altrusa International of Lake County, president and charter

member; Education Foundation of Lake County, president and founder; Lake Sumter Community College Foundation, member; Leesburg Federated Republican Women's Club, member and former president; Leesburg Federated Republican Club, member; Hospice Ethics Board, member **legislative service**

elected to the Senate in 1996 **other public service** chairman and member, Lake County School Board, 1982-1990; elected precinct committeewoman; Lake County Republican Executive Committee 1982-2000; Committee for Fair Utility Prices, president **highlights** City of Leesburg, Community Service and Leadership Awards; *Orlando Sentinel* and League of Cities; Leesburg Area Chamber of Commerce; Rollins College; Board of Directors, Florida School Boards Association; United Way Campaign, Chairman for Lake and Sumter counties; Leadership Lake County, vice president and charter member; former college professor/counselor; field underwriter; biological researcher **religious affiliation** Catholic **addresses** (district) 716 West Magnolia Street, Leesburg 34748 (Tallahassee) 240 Senate Office Building, 32399-1100 **telephones** (district) 352/315-9335 (Tallahassee) 904/487-5014.



Charlie Crist
Republican, District 20

Attorney, Senator **born** July 24, 1956 in Altoona, Pennsylvania. Moved to Florida in 1960 **education** St. Petersburg High: Senior Class President; National Honor Society; Quarterback, Varsity Football; Wake Forest University, 1974-1976: Quarterback, Varsity Football; Florida State University: Student Body Vice President; Garnet and Gold Key Honorary; B.S., Government, minor in Education, 1978; Cumberland School of Law, J.D., 1981 **affiliations** Board of Directors,

Foundation for Florida's Future; American Lung Association's President's Council of Pinellas County; Tampa Bay MDA Advisory Committee; St. Petersburg Chamber of Commerce; Pinellas Park Chamber of Commerce; Board of Directors, Operation PAR; Florida Conservation Association; Board of Directors, Police Athletic League; Fellow, American Swiss Association; Hillsborough Bar Association; St. Petersburg Bar Association; Ethics Committee, The Florida Bar; American Bar Association; Board of Governors, Republican National Lawyers Association; Pinellas County Republican Executive Committee; Area Agency on Bay Management; Administrative Board, First United Methodist Church; Suncoasters Civic Club; FSU Boosters; Rotary; Board of Directors, Suncoast Tiger Bay Club **legislative service** elected to the Senate in 1992; reelected in 1994 **other public service** U.S. Senator Connie Mack's former State Director; Chairman, Senator Mack's Baseball Anti-Trust Advisory Committee; served as youngest member of Senator Mack's Federal Judicial Advisory Commission; Former General Counsel, National Association of Professional Baseball Leagues **highlights** Florida Police Benevolent Association, Distinguished Legislator Award, 1996; Florida Conservation Association, Legislative Conservation Award, 1996; Honorary

Sheriff, 1995; Police Benevolent Association, Legislator of the Year, 1995; Florida Prosecuting Attorneys Association, Senatorial Leadership Award, 1995; Urban League Government Award, 1995; Florida Wildlife Federation's Conservationist Legislator of the Year, 1995; Florida Sheriffs Association, Legislative Award, 1994, 1996; Stop Turning Out Prisoners Award, 1994; Florida Association of School Administrators, Legislative Award, 1993; Pinellas School Administrators, Legislative Award, 1993; PACE Award, 1993; Florida Chamber of Commerce, Roll Call Award, 1993; Leadership St. Petersburg; Outstanding Young Men of America; Tiger Bay of Tampa True Grit Award; Major League Baseball Phil Piton Award for Service **religious affiliation** Methodist **recreation** water skiing, reading, and jogging **addresses** (district) 360 Central Avenue, Suite 1210, St. Petersburg 33701 (Tallahassee) 304 Senate Office Building, 32399-1100 **telephones** (district) 813/893-5463 (Tallahassee) 904/487-5075.



Rick Dantzer
Democrat, District 17

Lawyer, Mediator, Businessperson **born** January 6, 1956 in Fort Leonard Wood, Missouri. Moved to Florida in 1956 **education** University of Florida: B.A., 1978; J.D., 1981; Florida Blue Key **wife** Julie Pope of Winter Haven **children** Elizabeth, 10; Margaret, 7 **affiliations** The Florida Bar; Green Horizon Land Trust Board of Directors; United Way Success By Six; Ducks Unlimited **legislative service** House of Representatives, 1982-1990; elected to the Senate in 1990, reelected

subsequently **religious affiliation** Presbyterian **recreation** sports, camping, hunting, and fishing **addresses** (district) P.O. Box 9225, Winter Haven 33883-9225 (Tallahassee) 200 Senate Office Building, 32399-1100 **telephones** (district) 941/294-2876; (Sebring) 941/386-6016 (Tallahassee) 904/487-5044.



Mario Diaz-Balart
Republican, District 37

President: Gordon, Sloan and Diaz-Balart **born** September 25, 1961 in Fort Lauderdale **education** University of South Florida **affiliations** Westchester Lions Club; Special Olympics Florida Board of Directors, former member; Spanish American League Against Discrimination; Republican National Committee's Hispanic Advisory Board; National Association of Latino Elected Officials, Asociacion Integral Mambisa; National Human Rights Commission of the

"Municipios en el Exilio," Advisor **legislative service** House of Representatives, 1988-1992; elected to the Senate in 1992, reelected subsequently **other public service** Miami Mayor Xavier Suarez's Administrative Assistant, 1985-1988; Consultive Committee of Children's First Member; member of Dade Partners for Safe Neighborhoods; member of the Board of Directors of the Florida Entertainment Commission **highlights** Florida Conference of District Courts of Appeal Judges, Resolution of Appreciation, 1996; Florida Association of State Troopers, Leadership Award, 1996; Police Benevolent Association, Distinguished Leadership Award, 1996; American Association of Poison Control Centers, Government Recognition Award, 1996; Florida Attorneys Association, Furtherance of Justice Award, 1994; MADD, Award of Honor, Public Services Award, 1994; Florida Association of Community Colleges Award **historical** Rafael Diaz-Balart, grandfather, elected to Cuban House of Representatives in 1936. Juan Caballero, uncle, elected to Cuban House of Representatives in 1954. Rafael L. Diaz-Balart, father, Majority Leader of Cuban House of Representatives 1954-1958 and elected to Cuban Senate in 1958. Lincoln Diaz-Balart, brother, served in the Florida House of Representatives from 1986-1989 and served in the Florida Senate from 1989-1992; elected to the U.S. Congress, September 1992, Congressional District 21 **religious affiliation** Catholic **recreation** reading, biking, and diving **addresses** (district) 8890 Coral Way, Suite 215, Miami 33165 (Tallahassee) 334 Senate Office Building, 32399-1100 **telephones** (district) 305/227-7690 (Tallahassee) 904/487-5130.



Fred R. Dudley
Republican, District 25

Attorney **born** November 8, 1944 in Fort Myers **education** University of South Florida, B.A., 1965; President, Interfraternal Council; Stetson University College of Law, J.D., 1968; Dean's List **children** Charlie and Chris **affiliations** Tropical Lodge #56, Masons; Araba Shrine Temple **legislative service** House of Representatives, 1982-1986; elected to the Senate in 1986, reelected subsequently **other public service** Municipal Judge, City of Cape Coral; Planning and Zoning

Commissioner, City of Cape Coral; Chairman, Board of Trustees, Cape Coral Hospital; President, Cape Coral Chamber of Commerce **highlights** Allen Morris Award: Most Promising First Term, 1986; Board Certified, The Florida Bar: Probate and Estate Planning; Fellow, American College of Trust and Estate Counsel **religious affiliation** Episcopal **recreation** music (guitar) and book collecting **addresses** (district) 1718 Cape Coral Parkway, E., Cape Coral 33904 (Tallahassee) 313 Senate Office Building, 32399-1100 **telephones** (district) 941/432-5795 (Tallahassee) 904/487-5124.



John H. (Buddy) Dyer, Jr.
Democrat, District 14

Attorney **born** August 7, 1958 in Orlando **education** Brown University, Sc.B. Civil Engineering, 1980; University of Florida College of Law, J.D., 1987; Order of the Coif; Florida Blue Key; Editor-in-Chief, *University of Florida Law Review*, 1987; member, Chester Bedell American Inn of Court, 1986-87; Golden Key National Honor Society (Honorary Member) **wife** Karen Caudill of Palm Beach Gardens **children** John Hugh III (Trey), Andrew (Drew) Warren **affiliations** The

Florida Bar (Young Lawyers Division, Board of Governors, 1989-1992); Orange County Bar Association (Young Lawyers Section, Board of Directors, 1989-1992); American Bar Association; Florida Engineering Society; Florida Lawyers Association for the Maintenance of Excellence **legislative service** elected to the Senate in 1992; reelected subsequently **other public service** ex-officio member of Enterprise Florida Technology Development Board, 1996; Florida Education Facilities Study Committee, 1994; Governor's Growth Management Plan Advisory Committee, 1993; Department of Education "Classrooms First" Task Force, 1993 **highlights** Council of State Governments,

Henry Toll Fellow, 1996; International Council of Shopping Centers, Legislator of the Year, 1996; Independent Funeral Directors, Legislator of the Year, 1996; Seminole County Public Schools, Outstanding Legislator, 1995-1996; Florida Board of Regents, Legislative Leadership Award, 1995; Florida Association of Social Workers, Legislator of the Year Award, 1995; Athletic Trainers' Association of Florida, Service Appreciation Award, 1995; Florida Association of Realtors, Legislator of the Year, 1995; Florida Association of District Instructional Materials Administrators, Outstanding Support, 1994; James A. Ruth Outstanding Legislative Effectiveness Award, Florida Engineering Society, 1994; D.I. Rainey Legislative Award, 1994; FTP/NEA Freshman Friend of Education Award, 1993; Quality Floridian, Florida League of Cities, 1993; Florida Audubon Society, Legislative Excellence Award, 1993 **religious affiliation** Presbyterian **recreation** fishing, reading, and golf **addresses** (district) P.O. Box 1031, Orlando 32802-1031 (Tallahassee) 204 Senate Office Building, 32399-1100 **telephones** (district) 407/245-0882 (Tallahassee) 904/487-5190.



Howard C. Forman
Democrat, District 32

Market Consultant **born** January 6, 1946 in Pittsburgh, Pennsylvania. Moved to Florida in 1955 **education** Miami-Dade Community College; University of Miami; New York Institute of Finance **wife** Susan Schwartzman of Charleston, South Carolina **children** Iris and Rosette Forman; stepchildren: Todd and Michelle Stone **affiliations** Broward Lodge No. 300, Free and Accepted Masons; Mahi Shrine Temple; Knights of Pythias, Pembroke Pines Lodge No. 216; Bernard Baruch

B'nai B'rith Unit; several Democratic clubs; Pierpointe Homeowners' Association **legislative service** elected to the Senate in 1988, reelected subsequently; Chairman, Broward County Delegation, 1990 **other public service** Human Resources Committee of the Southern Legislative Conference, alternate member, 1995; South Florida Regional Planning Council, 1977-1985; Mental Health Board, 1977-1980, chairman of MPO, 1982-1984; Broward County Commission, 1976-1988, chairman: 1979-1980, 1986-1987, vice-chairman: 1978-1979, 1985-1986; Hallandale City Commission, 1973-1976 **highlights** Anti-Defamation League, North Broward Region, Torch of Liberty Award, 1996, 1995; The Broward Children's Center, 1996 Award; 1996 American Lung Association Legislative Advocacy Award; Community Committee for Developmental Handicaps, Inc., 1996 Legislator of the Year; Paralyzed Veterans of America, Harry A. Schweikert, Jr., Disability Awareness Award for 1995; Appreciation Award, 1995 Florida Children's Forum;

Outstanding Service and Contributions Award on behalf of Developmentally Disabled Individuals, Foundation for Learning, 1995; Florida Fire Chiefs' Association, 1995 Distinguished Service Award; March of Dimes, Legislative Recognition Award, 1995; 1995-1996 United Way of Dade County, Public Policy Leadership Award; The Academy of Florida Trial Lawyers, Outstanding Legislator Award, 1994; ARC Broward, Inc., Senator of the Year, 1994; American Planning Association, Florida Chapter, Legislator of the Year, 1994; Sunshine Health Center, Inc., Humanitarian of the Year, 1994; Florida Consumer Action Network, Consumer Champion Award, 1993; Florida Advocates for Community Care for Disabled Adults, Award for Commitment to Community's Adults with Disabilities; Florida Federation of Business and Professional Women's Clubs, Inc., Outstanding Senator for 1993; Florida Council for Community Mental Health, Legislator of the Year, 1993; Florida Pharmacy Association, President's Award of Excellence, 1992-1993; Florida Audubon Society, Legislative Excellence Award, 1992; Florida Association of School Administrators, Raymond B. Stewart Gavel of Authority Award, 1991; Florida School Boards Association, 67 Award, 1990, 1991; Allen Morris Award: Most Promising First Term (runner-up), *Florida Times-Union* Poll, 1990; Early Childhood Development Association, 1986 **religious affiliation** Jewish **recreation** reading, bicycling, and swimming **addresses** (district) 4000 Hollywood Boulevard, Suite 340-N, Hollywood 33021-6744 (Tallahassee) 210 Senate Office Building, 32399-1100 **telephones** (district) 954/983-3200 (Tallahassee) 904/487-5103.



John A. Grant, Jr.
Republican, District 13

Attorney **born** July 12, 1943 in Tampa **education** University of Florida, 1961-1962; University of South Florida, B.A., 1964; Florida State University, Master of Science and Government, 1965; Stetson University, J.D., 1968; Trinity College of Florida, Honorary Doctorate of Humane Letters (DHL), 1993 **wife** Beverley Code of Tampa **children** John, James, and Jeanette Odom; grandchild: Hannah Elizabeth Odom **affiliations** North Tampa Rotary; Moffitt Cancer Center Board of Directors; Egypt

Temple Shrine; 32nd degree Mason; Tampa Consistory of Scottish Rite; Temple Terrace Masonic Lodge; The Florida Bar; American Bar Association; American Judicature Society; North Tampa Kiwanis Club, past president; University of South Florida Alumni Association, past national president and National Board of Directors; University of South Florida Foundation Board of Directors; Florida State University Alumni Association; Stetson Lawyers Association; United States Small Business Administration Advisory Board,

1973-1976 **legislative service** House of Representatives, 1980-1986; elected to the Senate in 1986, reelected subsequently **other public service** Chairman of the Board of Trustees, Good Samaritan Hospital, 1976-1983; Florida Ethics Commission, 1974-1978, Vice Chairman, 1976-1978; Tampa Housing Authority General Counsel, 1972-1979; Assistant State Attorney, 1970-1972; Florida Senate Administrative Assistant, 1966-1967; Lakeland City Manager Assistant, 1964 **highlights** God and Country Award, Christian Coalition of Pasco, 1996; Community Communications Award, Tampa Educational Consortium, 1996; Gift of Life Award, LifeLink Foundation, Inc., 1995; Better Life Award, The Florida Assisted Living Association, 1994; D.I. Rainey Legislative Award; Crimefighter Award, Florida Department of Law Enforcement, 1988; Florida Mental Health Counselors Association, Advocate of the Year, 1988; Freedom Award, Tampa Women for Responsible Legislation, 1987; Outstanding Legislator Award, Unified Sportsmen of Florida, 1987 **religious affiliation** Baptist **recreation** tennis, travel, and flying **addresses** (district) 610 West Waters Avenue, Suite A, Tampa 33604 (Tallahassee) 317 Senate Office Building, 32399-1100 **telephones** (district) 813/975-6658, 800/795-5597 (Tallahassee) 904/487-5068.



Alberto (Al) Gutman
Republican, District 34

Businessman **born** January 4, 1959 in Havana, Cuba. Moved to Florida in 1965 **education** Miami-Dade Community College, A.A., 1980; University of Miami, B.B.A., 1982; Phi Theta Kappa National Honor Fraternity; Golden Key National Honor Society; Honor Society of Phi Kappa Phi **wife** Marci Rabinowitz of New York, New York **children** Lauren, 9; and Ilana, 8 **affiliations** University of Miami Alumni Association; FIU Alumni Association, honorary member; B'nai

B'rith; Masons; Miami-Roads Civic Association; Young Republicans; Republicans for Environmental Protection, founding member; United Way Hispanic Leadership Committee **legislative service** House of Representatives, 1984-1992: Joint Committee on Child Abuse; House of Representatives' Liaison to the Governor's Commission for a Free Cuba; Founding Chairman of the Cuban-American Caucus of the House of Representatives; elected to the Senate in 1992; reelected in 1994; Select Committee on Hurricane Relief and Disaster Preparedness; Commissioner, Florida Commission on Minority Health, 1993-1995; Select Committee on Health Care, vice chairman, 1994; National Conference of State Legislatures, Health Care Committee; Southern Legislative Conference, Environmental Quality and Natural Resources Committee; Select Committee on Telecommunications **other public service** Florida Seed Capital

Board, Advisory Board Member; Dade County Republican Party Executive Committeeman; United Way Hispanic Leadership Committee, Youth Sub-chairman **highlights** Miami Association of Life Underwriters, Dade Association of Health Underwriters; Columbia Hospital Corporation Award; Subacute Care Month Health Care Award, 1994; Recognition for Outstanding Service, Federal Law Enforcement Officers Association; Florida Medical Association, Leadership Award, 1993; Community Service Award: National Alliance of American Latins, Private Industry Council Stay in School Program; Certificate of Appreciation, United States Department of Justice Drug Enforcement Administration; Republican of the Year Award, Dade County Republican Party; Outstanding Young Men of America; "OTTO" Award, 1992; Legislator of the Year Awards: Florida Bingo Association, 1992; International Council of Shopping Centers, 1989; Retail Grocers Association of Florida, 1989 **religious affiliation** Jewish; Temple Beth Shmuel, Beth Chaim Yosef Congregation, Temple Beth David **recreation** fishing and reading **addresses** (district) 1800 S.W. 27th Avenue, Suite 300, Miami 33145 (Tallahassee) 215 Senate Office Building, 32399-1100 **telephones** (district) 305/442-6990 (Tallahassee) 904/487-5109.



James T. (Jim) Hargrett, Jr.
Democrat, District 21

Real Estate, Retail **born** July 31, 1942 in Tampa **education** Morehouse, B.A., 1964; Atlanta University, M.B.A., 1965 **wife** Berlyn Chatard of New Orleans, Louisiana **children** Crystal and James III **affiliations** Board of Directors, Moffitt Cancer Center; member, Florida First Capital Finance Corporation; Board of Directors, Hillsborough County National Conference of Christians and Jews; Board of Governors, Greater Tampa Chamber of Commerce; Florida State and

Hillsborough County Democratic Executive Committees; Ybor City Chamber of Commerce; Florida Council on Crime and Delinquency; Tampa Bay Performing Arts Center Board of Trustees Alumni Club; University of Tampa Board of Trustees; United Way Florida State Campaign Chairman; Ybor City Centennial Celebration Committee; board member, Legal Environmental Assistance Foundation; Job Club Advisory Committee **legislative service** House of Representatives, 1982-1992; Chairman: Employee and Management Relations Committee, Public Transportation Committee; Delegate: National Conference of State Legislatures, Southern Regional Education Board; Chairman, Florida Conference of Black State Legislators, 1984-1986; Chairman, Hillsborough County Legislative Delegation, 1986-1987; elected to the Senate in 1992; reelected subsequently. Chairman: Tourism, Trade and

Economic Development Committee; Transportation Committee; member, Select Committee on Juvenile Justice Reform **other public service** Citizens' Planning and Environmental Advisory Council, 1994; Governor's Advisory Committee on Cable Television; Governor's Advisory Council on Minority Enterprise Development, 1984-1985; Florida Economic Development Advisory Council, 1980-1982; Hillsborough County Board of Consumer Affairs and Appeals, chairman, 1979-1981; City of Tampa Downtown Development Authority, 1979-1982; City of Tampa Housing Authority, 1969-1971 **highlights** Polk County Young Democrats, Democrat of the Year Award; Elderly Handicapped and Disadvantaged Citizens, Leadership in Transportation Needs Award; Central Florida Human Services Center Award for Dedicated Community Service; Award for Outstanding Efforts on Behalf of Families, Pinellas County; Excellence, Dedication and Devotion in Education Award from Hillsborough County Public Schools; Polk Education Association Award for Maintaining 100% voting record in 1993; Florida Legal Services, Most Effective Legislator; Florida Consumer Action Network, Consumer Champion; Award for Tireless Leadership in Affordable Housing Issues; Florida Association of Housing and Redevelopment, Legislative Award; Southern Political Science Association, Appreciation Award; Airport Visionary and Preservationist Award **military service** U.S. Army Reserve 1965-1971 **religious affiliation** Methodist **recreation** fishing **addresses** (district) P.O. Box 11025, 2107 E. Osborne Avenue, Tampa 33680 (Tallahassee) 330 Senate Office Building, 32399-1100 **telephones** (district) 813/272-2990 (Tallahassee) 904/487-5059.



Katherine Harris
Republican, District 24

Vice President, commercial real estate firm **born** April 5, 1957 in Key West **education** Agnes Scott College: B.A., History, 1979; first position collegiate tennis team; University of Madrid: Spanish, Art, 1978; L'Abri International Fellowship, Philosophy, Religion, 1980; Harvard University, M.P.A., International Trade, 1996 **husband** Anders Ebbeson of Halmstead, Sweden **affiliations** Mote Marine Laboratory, former Advisory Council member; Sarasota, Englewood,

Charlotte, and Venice Chambers of Commerce; Women's Resource Center, Presidential Advisory Council; former member, Board of Directors, Sarasota County Arts Council; Leadership Sarasota and Leadership Tampa, former member of Nominating and Steering Committees; Sarasota Jaycees; Habitat for Humanity; New College; United Cerebral Palsy; Florida Republican Executive Committee **legislative service** elected to the Senate in 1994; Sarasota County

Legislative Delegation, vice chair **other public service** Congressional intern, U.S. Senate and U.S. House of Representatives, 1978; former vice chair, Ringling Museum Board of Trustees; Public Service Commission Nominating Council; Supreme Court Gender Bias Commission; American Legislative Exchange Council, vice chair for Florida; National Conference of State Legislators, Arts and Tourism Committee; Southern Legislative Conference, Energy Committee, alternate member **highlights** Department of Labor and Employment Security, 1996 Legislative Appreciation Award; Florida Optometric Association, 1996 Legislator of the Year Award; Florida Funeral Directors Association, 1996 Legislative Leadership Award; Independent Funeral Directors of Florida, 1996 Legislator of the Year Award; Sarasota Opera, 1996 Legislator of the Year Award; *Sarasota Magazine*, 1995 Best Government Official; Sarasota Chamber of Commerce, 1994 Distinguished Leadership Alumni Award; Sarasota County Arts Council, Florida Artspace, 1995 Arts Advocacy Award; IBM, National Accounts Division, Marketing; Leadership Sarasota's Distinguished Leadership Alumni Award, 1994 **historical** Ben Hill Griffin, Jr., grandfather, served in the House of Representatives from 1956 until 1963; was elected to the Senate, serving the 7th district from 1965-1966, and the 27th district from 1967-1968 **religious affiliation** Presbyterian **recreation** skiing, beach volleyball **addresses** (district) 3131 Tamiami Trail South, Suite 101, Sarasota 34239-5101 (Tallahassee) 324 Senate Office Building, 32399-1100 **telephones** (district) 941/365-8683 (Tallahassee) 904/487-5081.

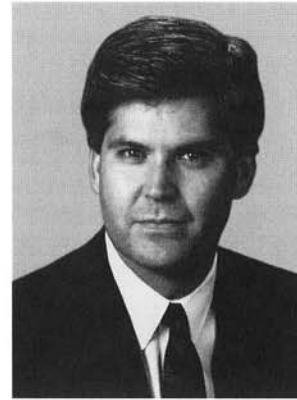


Betty S. Holzendorf
Democrat, District 2

Administrator **born** April 5, 1939 in Jacksonville **education** Edward Waters College, B.S., 1965; Atlanta University, M.A., Bio-Chemistry, 1971; University of North Florida, M.Ed. Adm., 1973 **husband** King Holzendorf, Jr. of Jacksonville **children** Kim V. Lockley, King L. III, Kevin J., and Kessler L. **affiliations** National Conference of State Legislatures; Alpha Kappa Alpha; National Council of Negro Women, life member; National Conference of Black State Legislators; Jacksonville

Chamber of Commerce; Northside Businessmen's Club; NAACP; Northside Civic Association, founder; Jacksonville Conference of Black Elected Officials **legislative service** House of Representatives, 1988-1992; elected to the Senate in 1992, reelected subsequently: Subcommittee chairperson, Appropriations Subcommittee B (Education); Vice chair, Juvenile Justice Reform; Central Voter File Study Committee; chairperson, Duval Legislative Delegation, 1992-1993; Florida Conference of Black State Legislators, chairperson, 1994-1995

other public service Juvenile Justice Advisory Board; Florida Laubach Organizations; National Council of Negro Women; United Way; University Medical Center, Community Advisory Committee; Minority Business Opportunity Committee; Jacksonville Symphony; Andrew Jackson High School Oversight Committee; Blueprint 2000; Coalition for a Drug and Crime Free Jacksonville; Florida Council on Vocational Education; Jacksonville Affordable Housing Committee, 1993-present; Health Clubs, USA; First Coast Black Business Investment Board; Jacksonville Community Liaison Officer, 1979-1981; Legislative Aide, 1981-1987; Jacksonville AA/EEO Officer, 1975-1979 **highlights** First Coast Black Business Investment Corporation, Special Recognition Award, 1996; FTP-NEA, Friend of Education Award, 1996; IPN-Florida's Intervention Project for Nurses Award, 1996; A. Philip Randolph Northside Skills Center, Special Recognition Award, 1996; James Weldon Johnson Living Legend Award, 1996; All People Church of God, Woman of Distinction Award, 1996; Duval Teachers Union, Legislator of the Year Award, 1996; Florida Association of School Administrators, Raymond B. Stewart Gavel of Authority Award, 1996, 1994, 1993; Department of Labor, Legislative Award, 1996; First Coast Manufacturers Association, Special Recognition Award, 1996; University of North Florida, Distinguished Alumni Award, 1996; Florida Insurance Council, Legislator of the Year, 1996; State Attorneys' Recognition of Achievement, 1995; Outstanding Service, M.L. King Elementary School, 1995; Edward Waters College, Honorary Doctor of Laws, 1994; State Long-Term Care Ombudsman Council, Certificate of Appreciation; Florida-Georgia Alliance for Minority Participation, 1994; Ribault Senior High School, Class of 1994, Recognition of Support; Board of Regents, Resolution honoring and recognizing outstanding leadership, 1994; Juvenile Justice Center, Award for Support, 1993; Duval Teachers United, Outstanding Legislator Award, 1993; Putnam County School Board, Outstanding Legislator Award, 1993; Florida Insurance Commission, 1993 Award for Excellence; Jacksonville Chamber of Commerce, Outstanding Legislator Award, 1993; Florida League of Cities, Quality Legislative Award, 1992; Fraternal Order of Police Award, 1992; Successful Role Model Award, 1991; Brotherhood Award, 1990; Florida A&M University: President's Award, 1990, African American Heritage Award for support of education, 1991, Distinguished Leadership Award, Meritorious Achievement Award, 1994, FAMU Honorary Alumnus, 1995; Jacksonville Job Corps, Outstanding Service Award, 1990; Jacksonville Chamber of Commerce, Governmental Service Award, 1989; Emancipation Proclamation Award, Community Service Award, Northwest Council; *Who's Who Among Black Americans*, 1985; *Who's Who Among American Educators*, 1972 **religious affiliation** African Methodist Episcopal (A.M.E.) **recreation** reading and collecting pennies **addresses** (district) 816 North Ocean St., Jacksonville 32202-3083 (Tallahassee) 242 Senate Office Building, 32399-1100 **telephones** (district) 904/359-6880 (Tallahassee) 904/487-5024.



Jim Horne
Republican, District 6

Certified Public Accountant **born** January 20, 1959 in Orange Park **education** Florida State University, B.S., Accounting, 1980 (graduated with business degree in 3 years) **wife** Lori McArdle of Niagara Falls, New York **children** Ashley, Laura, John David, and Katherine **affiliations** board member, Orange Park Rotary; board member, "Keep Clay Beautiful"; appointed member of Clay County Transit Authority **legislative service** elected to the Senate in 1994 **other public service** Chairman, Clay County Chamber Education Committee; Board member, Clay County Chamber of Commerce; President, Clay County Chamber of Commerce, 1992; Co-founder, Clay County Education Foundation **highlights** immediately upon graduation from Florida State University, Jim Horne became the youngest tax manager for Price Waterhouse in the history of its Jacksonville office **religious affiliation** Baptist **recreation** running, golf **addresses** (district) 4250 Lakeside Drive, Suite 205, Jacksonville 32210-3306 (Tallahassee) 342 Senate Office Building, 32399-1100 **telephones** (district) 904/381-6025 (Tallahassee) 904/487-5027.



Kenneth C. (Ken) Jenne II
Democrat, District 29
Democratic Leader

Attorney **born** December 1, 1946 in New Haven, Connecticut. Moved to Florida in 1956 **education** Palm Beach Junior College, A.A., 1966; Florida Atlantic University, B.A., 1968; Florida State University, J.D., 1972; Fort Lauderdale College honorary Doctor of Humane Letters, 1978; Southeastern University honorary Doctor of Laws, 1986; Phi Alpha Delta International, Pi Sigma Alpha, Sigma Phi Epsilon, Pi Alpha Alpha, Phi Rho Pi **wife** Caroline Maslanka of St. Petersburg Beach **children** Evan Boyd and Sarah Elizabeth Anne **affiliations** American, Florida, and Broward Bar Associations, member; National District Attorneys, former member; Florida Prosecuting Attorneys Association, former member **legislative service** elected to the Senate, 1978-1988; reelected to the Senate in 1990; reelected subsequently; Appropriations Committee Chairman; Rules and Calendar Committee Chairman; Judiciary Committee Chairman; Judiciary Criminal Chairman; Executive Business Committee Chairman; Finance, Taxation and Claims Committee Chairman; Select Committee on Hurricane Relief and

Disaster Preparedness; Broward County Legislative Delegation, former Chairman and Vice Chairman; Hendry County Legislative Delegation, former Chairman and Vice Chairman; Collier County Legislative Delegation, former Vice Chairman; Democratic Leader, 1994-1996; 1996-1998 **other public service** Constitution Reform Revision Steering Committee; Governor's Commission on Education; Commission on Local Government II; Chair, Joe DiMaggio Children's Foundation; Honorary Board Member, Ft. Lauderdale Children's Theater; Board Member, Clinica de las Americas; Governor's Council on Organized Crime; Florida Tax and Budget Reform Commission; Florida High Technology and Industry Council; Florida Council on Asian Affairs; Columbus Hemispheric Trade Commission; Task Force for Beach Management Funding; Broward County Commission, 1975-1978, Chairman, 1976-1977; Broward County Charter Commission, Executive Director, 1974-1975; former Assistant State Attorney, 17th Judicial Circuit **highlights** FEA United, Legislative Award, 1996; United Teachers of Dade and Dade School Board Award, 1994; Florida Audubon Society, Legislative Excellence Award, 1993; Elks South/West Hollywood Lodge, Outstanding Legislative Service Award, 1993; American Planning Association, Legislative Service Award, 1992; Florida Association of Property Appraisers, Most Valuable Legislator Award, 1991; Broward County Veterans Council, Outstanding Elected Official Award, 1991; American Jewish Committee, Learned Hand Award, 1989; Environmental Coalition Award, Environmentalist of the Year, 1988; Young Democrats Club, Democrat of the Year Award, 1988; Florida Consumer Federation, Leadership Award, 1986; Children's Home Society, Legislative Award, 1986; Broward County Commission, Leadership Award, 1985; Florida Pediatric Society, Outstanding Legislator Award, 1985; Allen Morris Award, Most Effective Senator, 1984, 1986, 1987; National Jewish Hospital/National Asthma Center, Humanitarian Award, 1983; Human Services Advocates of Broward County, Legislator of the Year Award, 1982 **military service** Sergeant, U.S. Army Reserve **religious affiliation** Episcopal **addresses** (district) The 110 Tower, 110 SE 6th Street, 9th Floor, Ft. Lauderdale 33301 (Tallahassee) 211 Senate Office Building, 32399-1100 **telephones** (district) 954/712-4999 (Tallahassee) 904/487-5097.



Daryl L. Jones
Democrat, District 40

Attorney of Counsel: Adorno & Zeder, PA **born** May 31, 1955 in Jackson, Mississippi. Moved to Florida in 1981 **education** Valedictorian, Lanier High School, Jackson, Mississippi; President, Mississippi State Association of Student Councils; high school city track champion, mile run; United States Air Force Academy: B.S., Math, with honors, 1977; Cadet Vice Wing Commander (#2 in military leadership); middleweight boxing champion; University of Miami School of Law:

J.D., cum laude, 1987; Iron Arrow; Law Review, Note published; President: Student Bar Association, National Student Bar Association; Moot Court Board **wife** Myoushi Carter of Birmingham, Alabama **children** Derek L., Durel L., Michele E. **affiliations** member: Governor's Commission for a Sustainable South Florida, American Bar Association, National Bar Association, Dade County Bar Association, American Bankers Insurance Group Board of Directors, Orange Bowl Committee, Zoological Society of Florida Board of Directors; Attorney/Coach, 1990 Dade County High School Mock Trial Champions, Miami Central High School; Lector, Christ the King Catholic Church; Motivational speaker at Dade County schools **legislative service** House of Representatives, 1990-1992; elected to the Senate in 1992, reelected subsequently **other public service** Aviation Division, Dade County Attorney's Office, 1988-1990; Federal Judicial Clerk, Judge Peter T. Fav, 11th Circuit Court of Appeals, 1987-1988 **highlights** Best Local Politician, *New Times*, 1996; Carter G. Woodson Humanitarian Award, 1995; St. Martin de Porres Association Peace and Unity Award, 1995; Most Effective Freshman Senator, *Miami Herald*, 1994; Peace and Justice Award in Law, Alpha Kappa Alpha, 1994; NAACP Gwendolyn S. Cherry Memorial Award, 1994; Ronald McDonald House, Twelve Good Men, 1994; Legislator of the Year, Midwives Association of Florida, 1992; Most Effective Freshman Representative, *Miami Herald*, 1991; Freshman Legislator of the Year Award, Dade County Young Democrats, 1991; First Term Legislator of the Year, Florida School Boards Association, 1991; Outstanding Freshman Representative, Academy of Florida Trial Lawyers, 1991; Up and Comer Award, Government, Price Waterhouse/*South Florida* Magazine, 1991; Excellence and Achievement Award, the Miami Agenda, 1991; Toll Fellow, Class of 1991, The Council of State Governments; Politician of the Year Award, Mu Gamma Zeta Chapter, Zeta Phi Beta Sorority, Inc., 1991; Service Award, Richmond/Perrine Optimist Club, 1991; Leadership Miami, Class of 1987 **military service** United States Air Force: 1977-1984, F-4 Phantom Pilot; Puerto Rico Air National Guard, 1988-1989 A-7D Corsair II Pilot; USAF Reserves, 1989-present, F-16 Falcon

pilot **religious affiliation** Lector and member, Christ the King Catholic Church
recreation all sports **addresses** (district) 9300 S. Dadeland Boulevard, Suite 401, Miami 33156 (Tallahassee) 212 Senate Office Building, 32399-1100
telephones (district) 305/442-6901; (Monroe County) 800/303-2988 (Tallahassee) 904/487-5127.



George Grier Kirkpatrick, Jr.
Democrat, District 5

Executive Director, Independent Colleges and Universities of Florida; real estate; investments
born December 24, 1938 in Gainesville **education** Davidson College, B.S., Psychology, 1962 **wife** Monika Godzewski of Berlin, Germany **children** Catherine Grace and George Grier III **affiliations** Enterprise Florida, Inc., Board of Directors; Santa Fe Community College Endowment Corporation, Board of Directors; Foundation For Florida's Future, Board of Directors; Governor's

Commission on Education; Home Builders Association of Gainesville, past president; Florida Home Builders Association, past area Vice-President and Director; Gainesville Chamber of Commerce, past Director and Vice-President for Economic Development **legislative service** elected to the Senate in 1980, reelected subsequently **highlights** University of Florida Distinguished Achievement Award, 1996; *Gainesville Sun* Person of the Year, 1994; Association of Counties, County Champion, 1994; Florida Dental Association, Legislator of the Year Award, 1994; Florida Association of Community Colleges, Legislative Service Award, 1993; Preservation 2000 Leadership Award, 1992; Florida Association of Realtors, Legislator of the Year Award, 1992; American Foundation for Urological Disease, Appreciation Award, 1992; Florida Restaurants Association, Legislative Leadership Award, 1988; Florida Chamber of Commerce Award, 1986; Florida Student Association, Senator of the Year Award, 1986; Gator Medal of Honor, 1981; Allen Morris Awards: Most Effective First Term Senator, runner-up, 1982; Most Effective in Committee, 1985, 1986, and 1987 **military service** U.S. Army, 1st Lieutenant Military Police Corps, West Berlin, Germany 1962-1964 **religious affiliation** Presbyterian **recreation** fishing, golfing, enology, and origami **addresses** (district) 1103 N.W. 13th Street, Gainesville 32601 (Tallahassee) 252 Senate Office Building, 32399-1100 **telephones** (district) 352/377-3800 (Tallahassee) 904/487-5020.



Ron Klein
Democrat, District 28

Attorney **born** July 10, 1957 in Cleveland, Ohio. Moved to Florida in 1985 **education** Ohio State University: B.A., Political Science, 1979; Case Western Reserve University, J.D., 1982; Eta Chapter of Alpha Epsilon Pi Fraternity, president and founder; Judicial Commission Chief Justice; Phi Eta Sigma Scholastic Honorary **wife** Dori Dragin of Cleveland, Ohio **children** Brian, 11; and Lauren, 8 **affiliations** The Florida Bar and Palm Beach County Bar Association, Business and

Health Care sections; Board of Directors, World Trade Center of Palm Beach County; member: South Palm Beach County Jewish Federation, Executive Committee of the Jewish Community Relations Council, Florida Holocaust Curriculum Task Force, Honorary Board of Directors of the Holocaust Research Collection at Florida Atlantic University, Florida Atlantic University Holocaust Commission, Florida Atlantic University International Business Advisory Board; School Advisory Committee of Omni Middle School in Boca Raton; Fellow: Fleming Fellows Institute, Wexner Heritage Foundation; commissioner, Florida International Affairs Commission **legislative service** House of Representatives, 1992-1996; elected to the Senate in 1996. Legislative intern, Ohio House of Representatives, 1976-1979; Legislative Intern, U.S. House of Representatives, 1979 **other public service** United Way; Big Brothers, Big Sisters **highlights** American Heart Association, Outstanding Legislator, 1996; Florida Economic Development Council, Legislator of the Year, 1996; Recognition by Palm Beach County Sheriff's Office, Outstanding Support of Project D.A.R.E.; Holocaust Documentation and Education Center Award, for the Holocaust Education Bill, 1994; Pulmosa Elementary School Award, Outstanding Contribution to Education, 1993 **religious affiliation** Jewish **recreation** tennis, racquetball, water sports, and camping **addresses** (district) 9070 Kimberly Boulevard, Suite 60, Boca Raton 33434 (Tallahassee) 228 Senate Office Building, 32399-1100 **telephones** (district) 561/482-8560 (Tallahassee) 904/487-5091.



Patsy Ann Kurth
Democrat, District 15

Real Estate Broker **born** February 2, 1941 in Washington, Missouri. Moved to Florida in 1960 **education** Southwest Missouri State Teachers College; Brevard Community College **husband** Alan "Al" Kurth of New Jersey **children** Dawn (deceased), Wendy, Martha, and Sara **affiliations** South Brevard Democratic Women's Club, League of Women Voters **legislative service** elected to the Senate in 1990, reelected subsequently **other public service** Brevard County Planning and

Zoning Board; Planning and Zoning Board for the Town of Malabar **highlights** Area Association of Retarded Citizens, ARC/Florida Senator of the Year, 1996; Children's Home Society, R. David Thomas Child Advocate of the Year Award, 1996; Florida Alcohol and Drug Abuse Association, 1996 Legislator of the Year; Florida Economic Development Advisory Council, Legislator of the Year, 1996; Florida Network of Youth and Family Services, Legislator of the Year, 1996, 1995; Florida Pediatric Society, Outstanding Advocacy of Children's Causes, 1996; Rainbow Alliance for the Mentally Ill, Legislator of the Year, 1996; Area Association of Retarded Citizens, Brevard, Legislator of the Year Award, 1995; Brevard County Association of Retarded Citizens, Legislator of the Year Award, 1994; Child Care Association of Brevard, Marjorie Olsen Child Advocacy Award, 1994; Florida Nurses Association Outstanding Senator Award, 1994; Florida Economic Development Advisory Board, Legislator of the Year, 1993; Florida Restaurant Association, Legislator of the Year, 1993; Florida Association of Realtors, Legislator of the Year, 1993; East Central Florida Memory Disorder Clinic, Sustained Support Award, 1992 and 1994; Florida Chamber of Commerce-Chairman International Trade, Economic Development and Tourism, Leadership Award, 1992 **religious affiliation** Methodist **recreation** fishing, walking, quilting, and antique collecting **addresses** (district) 2174 Harris Avenue, N.E., Suite 1-B, Palm Bay 32905 (Tallahassee) 258 Senate Office Building, 32399-1100 **telephones** (district) 407/984-4951 (Tallahassee) 904/487-5053.



Jack Latvala
Republican, District 19

President, Direct Mail Systems, Inc., and Direct Response Marketing, Inc. **born** November 3, 1951 in Oxford, Mississippi. Moved to Florida in 1962 **education** Bartow High School, 1969; Stetson University, B.A., 1973 **wife** Susan Richardson of Shelbyville, Kentucky, Republican member of the Pinellas County School Board **children** Stephanie, Colin, Evan, and Christopher **affiliations** founding president, North Pinellas Republican Club; Pinellas County Republican Executive Committee; UPARC

Foundation **legislative service** elected to the Senate in 1994, reelected subsequently **other public service** Pinellas Sports Authority, 1987-1993 (Secretary, 1988-1990; Vice Chairman, 1990-1991); Chairman, Palm Harbor Community Services Agency (chairman, two terms; vice chairman, two terms, 1985-1993) **highlights** Florida School Boards Association, Florida Association of Counties, and South Florida Consortium of School Boards, 1995 Freshman Legislator of the Year; Eckerd Family Youth Alternatives, 1995 Legislator of the Year; Florida Association of School Administrators, Raymond B. Stewart Gavel of Authority; Florida League of Cities, Quality Floridian Award; Florida Conservation Association, 1995 and 1996 Legislative Conservation Awards; 1995 Florida Restaurant Association, Legislative Leadership Award; Florida Sheriffs Association, 1995 and 1996 Legislative Award; Outstanding Young Man of America, 1983; Outstanding Florida College Republican, 1972; Order of DeMolay, Distinguished Service Award, 1971 **religious affiliation** North Dunedin Baptist Church **recreation** fishing **addresses** (district) 35111 U.S. Highway 19, North, Suite 105, Palm Harbor 34684 (Tallahassee) 302 Senate Office Building, 32399-1100 **telephones** (district) 813/787-8991 (Tallahassee) 904/487-5062.



Tom Lee
Republican, District 23

Vice President, Sabal Homes of Florida, Inc. **born** January 21, 1962 in San Antonio, Texas. Moved to Florida in 1969 **education** Hillsborough Community College, A.A., 1982; University of Tampa, B.S., Business, 1984; Presidential Scholarship; Athletic Scholarship; Hillsborough Community College Scholastic Athlete of the Year, 1982 **wife** Amy Carey of Brandon **affiliations** Brandon '86 Rotary Club, charter member; Leadership Brandon Alumni; Florida Homebuilders Association; Greater Brandon Chamber of

Commerce **legislative service** elected to the Senate in 1996 **other public service** Hillsborough County Zoning Board of Adjustment, member, 1991-1993; Brandon Transportation Task Force, member, 1992; Greater Brandon Chamber of Commerce, president, 1993; Hillsborough County City/County Planning Commission, member, 1992-1995 **highlights** 1986 Graduate, Leadership Brandon; 1991 Greater Brandon Chamber of Commerce President's Award **religious affiliation** Catholic **recreation** golf, travel **addresses** (district) P.O. Box 2743, Brandon 33509; 1421 Oakfield Drive, Brandon 33511 (Tallahassee) 340 Senate Office Building, 32399-1100 **telephones** (district) 813/744-8683 (Tallahassee) 904/487-5072.



John M. McKay
Republican, District 26

Real Estate Broker, Mortgage Broker **born** September 23, 1948 in Winter Haven **education** Florida State University, B.S., 1972 **children** Mary Patricia, Sara Jane, and Meredith **legislative service** elected to the Senate in 1990, reelected subsequently **other public service** Chairman, Bradenton Downtown Development Authority, 1989-1990; Chairman, Bradenton Community Redevelopment Agency, 1989-1990; Board of Directors, Habitat for Humanity, 1989-1990;

member: Manatee and Sarasota Chamber of Commerce, Kiwanis Club; Board member, Learning Disability Association of Florida **highlights** Florida Association of Counties, County Champion Award, 1996; Tampa Educational Cable Consortium, Community Communications Award, 1996; Port Authority of Manatee County, Appreciation Award, 1996; Tampa Bay Regional Planning Council, Service Award, 1996; Organized Fishermen of Florida, Legislative Award, 1995; International Council of Shopping Centers, Legislator of the Year Award, 1995; Florida Sheriffs Association, Legislative Award, 1995; Florida

Association of Realtors, Legislator of the Year Award, 1995; Florida Educators of the Hearing Impaired, Honors Award, 1995; Florida Farm Bureau, Friends of Agriculture Award, 1994; Florida Alcohol and Drug Abuse Association, Legislator of the Year Award, 1994; Florida Medical Association, Legislative Leadership Award, 1993; Florida Association of Community Colleges, Legislative Service Award, 1993; Florida Chamber of Commerce, Cornerstone of Florida Business Award, 1993, 1995 **historical** D.B. McKay, great-uncle, Mayor of Tampa for 16 years in the early 1900s. Mitchell F. McKay, grandfather, Clerk of the Criminal Court in Tampa, 1908-1910, Deputy Clerk of Circuit Court, 1924-1928 **military service** Army National Guard and U.S. Army Reserve, 1969-75, honorable discharge **religious affiliation** First Presbyterian Church of Bradenton, Elder **recreation** golf and sailing **addresses** (district) 2424 Manatee Avenue, West, Suite 101, Bradenton 34205 (Tallahassee) 318 Senate Office Building, 32399-1100 **telephones** (district) 941/741-3099 (Tallahassee) 904/487-5078.



Matthew J. Meadows
Democrat, District 30

Diversity and Cultural Outreach Coordinator, School Board of Broward County **born** September 5, 1938 in Ft. Pierce **education** Bethune-Cookman College, 1961; President of Student Government Association; President, Kappa Alpha Psi; graduate studies: University of Massachusetts and Nova University; graduate seminars: University of New Hampshire, Harvard University **wife** Charley Mae Harris of Macon, Georgia **children** Matthew, Felicia, Debbie, Tommy, and Priscilla **legislative**

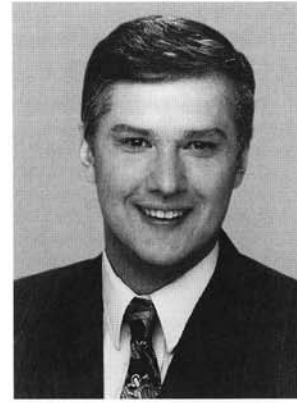
service elected to the Senate in 1992; reelected subsequently **other public service** consultant: State Department of Education, Florida Right to Read Sessions **highlights** *Who's Who Among American Colleges and Universities* **religious affiliation** Baptist **recreation** bowling and fishing **addresses** (district) 2453 North State Road 7, Lauderhill 33313 (Tallahassee) 224 Senate Office Building, 32399-1100 **telephones** (district) 954/714-3400, 800/459-3330 (Tallahassee) 904/487-5112.



William G. (Doc) Myers, M.D.
Republican, District 27

Physician **born** September 28, 1930 in Kittanning, Pennsylvania. Moved to Florida in 1961 **education** University of Pittsburgh: B.S., 1952, M.D., 1956; internship: Southside Hospital, Pittsburgh, 1957; internal medicine residency, 1958; Pi Kappa Alpha; Football 1, 2, 3; Nu Sigma honorary; Pitt Players; Alpha Omega Alpha honorary; Nu Sigma Nu **wife** Carol Anne Edgar of Washington, Pennsylvania **children** Jacqueline Jolane Means, William George Jr., Bradley Stephen, Brian Jeffry, Barry Douglas,

and Jennifer Sue **affiliations** Knights of Pythias, past member; Elks; Martin County Medical Society; American, Florida, and Southern Medical Associations **legislative service** House of Representatives, 1978-1982; elected to the Senate in 1982, reelected subsequently: Majority Leader, 1994-1996; Republican Leader, 1988-1990; Republican Leader Pro Tempore, 1986-1988; Health and Rehabilitative Services Committee Chairman, 1986-1988; Republican Whip, 1984-1986 **other public service** Health and Rehabilitative Services Department District IX Advisory Council Chairman, 1977-1978; Health Planning Council, 1977-1978; Treasure Coast Regional Planning, 1976-1978; Martin County Commission Chairman, 1968-1972 and 1976-1978 **highlights** American Medical Association, Dr. Nathan Davis Award, 1996; Florida Association of Counties, 1996; Florida Environmental Health Association, 1996; AAA, Legislator of the Year Award, 1994; Allen Morris Awards: Most Effective Freshman Senator, runner-up; and Most Respected Senator, 1990; Most Effective in Debate Award, runner-up 1986; S.O.D.A. (Stamp Out Drug Abuse) Martin County Founder, 1970; University of Pittsburgh, James Heard Prize Medicine Award, 1952 **religious affiliation** Methodist **recreation** tennis, racquetball, and squash **addresses** (district) 50 Kindred Street, Suite 301, Stuart 34994-3058 (Tallahassee) 236 Senate Office Building, 32399-1100 **telephones** (district) 561/283-3133 (Tallahassee) 904/487-5088.



John Ostalkiewicz
Republican, District 12

President and Owner of: Ostalkiewicz Diamond Importers (1969-present) in Rhode Island, Massachusetts, and Florida; Park Importers (1990-present); Liger Software (1992-present) **born** September 19, 1952 in Beverly, Massachusetts. Moved to Florida in 1988 **education** Babson College, B.S. in Accounting, 1974; Young Republicans; Junior Achievement; President, Chess Club; Gemological Institute of America, Graduate Gemologist **wife** Cynthia Celona of North

Providence, Rhode Island **children** Joshua, 14; Rebecca, 12; Samuel, 9 **affiliations** Jewelers of America **legislative service** elected to the Senate in 1994; Chairman, Seminole County Legislative Delegation, 1996 **other public service** Host of FM talk show: "John Ostalkiewicz's Family Rights Show," 1992-present; sponsor of Leukemia Society Annual Diamond Ball, 1991-present; Founder of Family Rights Committee, Inc., 1989-present **religious affiliation** Baptist **recreation** tennis, basketball, chess, family **addresses** (district) 6000 S. Rio Grande Avenue, Suite 101, Orlando 32809 (Tallahassee) 312 Senate Office Building, 32399-1100 **telephones** (district) 407/858-6183 (Tallahassee) 904/487-5047.



Tom Rossin
Democrat, District 35

Attorney, Banking Consultant **born** August 29, 1933 in New York, New York. Moved to Florida in 1958 **education** Columbia University, B.S., 1957; University of Miami, J.D., 1965 **wife** Joyce Thornton of Colquitt, Georgia **children** Thomas, Jr., Allen, and Michael Rossin; stepchildren: Robert Jr., Sam, Andrew, and Sandi Bouchlas **affiliations** member, Criminal Justice Commission of Palm Beach County; member, Horizons Council of Lee County; immediate past chairman, Economic

Council of Palm Beach County; chairman, Hanley Hazeldon Center at St. Mary's Hospital; past president, Community Bankers of Florida; board member, Big Brothers, Big Sisters; past president, Boy Scouts of America Gulfstream Council; American, Florida, and Palm Beach Bar Associations **legislative service** elected to the Senate in 1994; reelected subsequently **other public service** past president (9 years), West Palm Beach Downtown Development Authority; past vice chair, Palm Beach County Charter Revision Commission;

member, Joint Committee to Increase Government Efficiency **highlights** President, Flagler National Bank (1974-1993); Boy Scouts Silver Beaver Award; American Free Enterprise Award recipient **religious affiliation** Protestant **recreation** tennis and skiing **addresses** (district) 1241 Okeechobee Road, Building A, Suite 4, West Palm Beach 33401-6953; Lee County Courthouse, 2120 Main Street, Ft. Myers 33901 (Tallahassee) 230 Senate Office Building, 32399-1100 **telephones** (district) 561/837-5400 or 941/338-2646 (Tallahassee) 904/487-5356.



James A. (Jim) Scott
Republican, District 31

Attorney **born** January 14, 1942 in Pikeville, Kentucky. Moved to Florida in 1966 **education** University of Kentucky, B.A., 1963; J.D., 1965, Sigma Nu, Debate and Discussion Team, Phi Alpha Delta Law Fraternity **wife** Janice Ann Suskey of Miami **children** Frank and Stacy Ann **affiliations** Florida, Kentucky, and American Bar Associations; Broward County and South Palm Beach County Bar Associations; Ft. Lauderdale Chamber of Commerce; University of Kentucky Law Alumni

Association; Boca Raton Chamber of Commerce **legislative service** elected to the Senate in 1976, reelected subsequently: Minority Floor Leader, 1978-1980 and Minority Leader, 1980-1982; chairman, Appropriations Committee, 1986-1988 and 1992-1993; chairman, Rules and Calendar Committee, 1989-1990; vice chairman, Rules and Calendar Committee, 1993-1994; President, 1994-1996 **other public service** Legal Aid Service of Broward County Board of Directors and Treasurer, 1974-1976; prosecutor in Deerfield Beach, 1973-1976; Broward Legislative Delegation Attorney, 1972-1974; Associate Municipal Judge in Deerfield Beach, 1972 **highlights** Children's Home Society Award, 1996; Pete Weitzel/Friend of the First Amendment Award, 1996; Nature Conservancy, "Preservation 2000 Future Generations Award," 1993; Cities in Schools, "Appreciation Award," 1993; Legislative Excellence Awards: Audubon Society, 1990, 1992, and 1993; National Republican Legislator of the Year Award, 1990; Republican choice for Senate President-Designate, 1989; Retarded Citizens of Broward County, Legislator of the Year, 1987; Anti-Defamation League, "Torch of Liberty," Award, 1985; Community Service Council's Distinguished Service Award, 1984; Honorary Doctorate from Fort Lauderdale College, 1980; Allen Morris Awards: Most Effective First Term Member of Senate, 1978; Most Effective in Debate, runner-up, 1980-1982; Most Effective Member of the Senate, 1990 **military service** U.S. Coast Guard, 1965-1968 **religious affiliation** Presbyterian **recreation** golf and horseback riding **addresses** (district) 2000 East Oakland Park Boulevard, Ft. Lauderdale

33306-1195 (Tallahassee) 308 Senate Office Building, 32399-1100 **telephones** (district) 954/566-8600; (Boca Raton) 954/392-3710; (North Palm Beach) 954/833-9231 (Tallahassee) 904/487-5100.



Ronald A. Silver
Democrat, District 38

Attorney **born** June 25, 1943 in Cambridge, Massachusetts. Moved to Florida in 1958 **education** University of Miami, B.A., 1965; University of Miami, School of Law, J.D., 1968; Student Bar Association Senator, Phi Alpha Delta **wife** Irene Huth of Savannah, Georgia **children** Elayne and Joel **affiliations** American Judges Association; North Dade Bar Association, President, 1975 **legislative service** House of Representatives, 1978-1992: chairman, Dade

County Legislative Delegation, 1982-1983; House Majority Whip, 1984-1986; House Majority Leader, 1986-1988; House Floor Leader for Governor, 1990-1992. elected to the Senate in 1992; reelected in 1994: Majority Leader, 1994; chairman, Dade County Legislative Delegation, 1995-1996 **other public service** Task Force on Revenue Sharing for Dade County, 1996; The Florida-Israel Cooperation Committee, 1996; Southern Legislative Conference of the Council of State Governments, Executive Committee, Governing Board, Management Committee 1995-1996; Chair of the SLC of the CSG, 1992-1994, vice chair 1991-1992; member, United States Trade Representatives Intergovernmental Policy Advisory Committee, 1994-present; Federal Emergency Management Agency's Advisory Board representing the CSG, 1993-present; member, National Conference of State Legislatures, Criminal Justice Committee; Metro-Miami Marketplace-Destination 2001, Tourism Subcommittee, and Dade Partners for Safe Neighborhoods Task Force Leadership; chairman, Florida Condominium Study Commission, 1990; Governor's Task Force on Criminal Justice; Lauderdale Lakes Municipal Judge, 1975-1977; Miami Assistant City Attorney, 1972-1975; North Miami Beach Prosecuting Attorney, 1968-1971 **highlights** Florida Sheriffs Association: Legislative Award, 1996, Senator of the Year Award, 1994; Academy of Florida Trial Lawyers, Outstanding Senate Member, 1996; Police Benevolent Society, Outstanding Senator of the Year, 1995, 1994; Association of Counties, County Champion, 1995; United Teachers of Dade, Public School Education and Leadership in the Florida Senate, 1993; U.S. Department of Justice/Drug Enforcement Administration, Second Legislative Leadership Award Certificate of Appreciation, 1991; Areawide Council on Aging, Humanitarian Leadership Award, 1990; Allen Morris Award: Most Effective in Debate, 1988; Florida League of Cities, Quality Floridian, 1988 **religious affiliation** Jewish

recreation softball, tennis and basketball **addresses** (district) 115 N.W. 167th Street, 2nd Floor, N. Miami Beach 33169 (Tallahassee) 246 Senate Office Building, 32399-1100 **telephones** (district) 305/655-1701 (Tallahassee) 904/487-5121.



Donald C. (Don) Sullivan, M.D.
Republican, District 22

Orthopedic Surgeon **born** June 10, 1936 in Chicago, Illinois. Moved to Florida in 1972 **education** Northwestern University, B.S., 1958; Roosevelt University; Baylor University, M.D., 1962 **wife** Irene Hyland of Detroit, Michigan **children** Mary, Patrick, and Andrew **affiliations** Pinellas County Medical Society; Florida Medical Association; American Medical Association; member: American Academy of Orthopedic Surgeons, Florida Orthopedic Society **legislative**

service elected to the Senate in 1992; reelected in 1994 **other public service** Board of Legislative Advisors, Institute for Technology Assessment; member, Florida Commission on Aging with Dignity; member, Florida Education Commissioner's Instructional Materials Task Force; member, Greenways Coordinating Council; member, Greenways Commission; former board member, Pinellas County Medical Society; member of Leadership St. Petersburg **highlights** Merit Award, Pinellas County Medical Society, 1989-1990 and 1991-1992; Veterans of Foreign Wars; American Legion; Certified, American Board of Orthopedic Surgery; American Medical Association's Physician's Recognition Award **military service** U. S. Air Force, orthopedic surgeon **religious affiliation** Catholic **recreation** hunting and private pilot **addresses** (district) 8050 Seminole Office Center, Suite 330, Seminole 33772 (Tallahassee) 336 Senate Office Building, 32399-1100 **telephones** (district) 813/547-7801 (Tallahassee) 904/487-5065.



Pat Thomas
Democrat, District 3

Insurance Executive, Mortgage Broker **born** November 21, 1933 in Quincy **education** Quincy High School: Future Farmers of America, State Vice President; University of Florida, B.S.A., 1957; Florida Blue Key, Alpha Gamma Rho President, Senior Class President **wife** Mary Ann Jolley of Naples **children** Anne Jolley Thomas and John Pat Thomas; grandchildren: Corbett Proctor, Ivie Elizabeth, and Audrey Anne Thomas **affiliations** BPOE and Rotary, past President; 32nd

Degree Mason; Shriner **legislative service** House of Representatives, 1972-1974; elected to the Senate in 1974, reelected subsequently; President Pro Tempore, 1992-1993; President, 1993-1994 **other public service** Chairman, Democratic Party of Florida, 1966-1970 **highlights** Allen Morris Awards: Most Respected Senate Member, 1990 runner-up; Most Effective in Committee, 1983 and 1986; Most Effective in Debate, 1981 and 1986; Most Outstanding First-Term Member of the Senate, 1976; One of Florida's Five Outstanding Young Men, 1967; National Junior Chamber of Commerce's nominee as Outstanding Young Man of America, 1967; DeMolay Legion of Honor **military service** U.S. Army, Korea **religious affiliation** Presbyterian **recreation** hunting, boating, and fishing **address** 220 Senate Office Building, 32399-1100 **telephone** 904/487-5004.



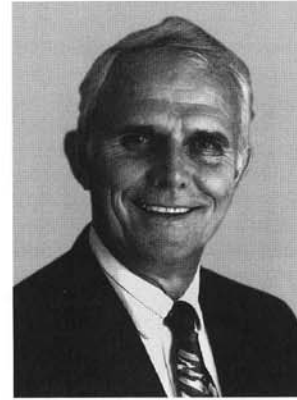
William H. (Bill) Turner
Democrat, District 36

Education administrator, former policeman, former teacher, consultant **born** August 1, 1931 in Miami **education** Bethune-Cookman, B.S., 1956; University of Miami, M.Ed., 1969; Honorary Doctor of Laws Degree, Faith College, Birmingham, Alabama, 1982 **children** Sereetta, Inger, Mark, and Gersen **affiliations** President's Leadership Circle, appointed by President William Clinton; Governor's Ad Valorem Task Force; Southern Regional Education Board; Education

Reform and Accountability Commission; Environmental Equity and Justice Commission; Vision 2000; Florida Commission on Long-Term Care; Dade Association of Vocational Adult Career and Community Education; American Association of Retired Persons; Dade County School Administrators Association; Dade County Democratic Executive Committee; Youth Crime

Watch of America Advisory Board; Kids in Dade Society, Board of Directors; NAF/Fannie Mae Academy of Finance, Board of Directors; Family Counseling Services of Greater Miami, Advisory Board; Elks Lodge 308; Circuit and County Courts Value Adjustment Board; Hialeah Hospital Advisory Board; Dade Public Education Fund, Board of Directors; Veterans Wish Foundation, Honorary Chairperson; Miami-Dade Community College Advisory Board; Dade County Tax Adjustment Board; Council of Great City Schools; National Alliance of Black School Educators; Youth Industries Advisory Board; Community Action Advisory Board; Released Employment Placement Service Advisory Board; Carver YMCA Board of Management; Dade County Association for Retarded Children; Black Grove; Third Century-Planning Committee; Southern Association of Black Administration Personnel, Inc.; Economic Development and Job Placement Council; Urban League of Greater Miami; School Board's Self-Insurance Commission; Dade Association of Vocational Adult Career and Community Education; National Jewish Democratic Council; Democratic National Committee; Miami Dade Chamber of Commerce **legislative service** elected to the Senate in 1992, reelected subsequently; Dade County Legislative Delegation chairman, 1993-1994 **other public service** elected to Dade County School Board, 1971, 1974, 1982, 1986, and 1990; elected Chairman, 1989 and 1990 **highlights** Distinguished Education Service Award, FIU College of Education, 1996; Outstanding Black American, Robert Morgan Vocational Technical Institute; Red Shield Award, The Salvation Army; Florida's Public Official, Adult and Community Educators of Florida; Founders Award, Kids In Dade Society/Florida Youth Cadets; Pinnacle Award, Bethune-Cookman College; Outstanding Legislator Award, South Florida Consortium of School Boards; Dr. Jean Jones-Perdue Special Achievement Award; Legislator of the Year, Florida School Boards Association; Citizen of the Year Award, Sigma Alpha Chapter, Omega Psi Phi Fraternity; Good Government Award, Dade County League of Cities; "Legislator of the Year," Dade County School Administrators' Association; Lard Brick Award given in recognition of support for state employees, AFL-CIO; Cornerstone of Florida Business 100% Award, Florida Chamber of Commerce; "67 Award," Florida School Boards Association; *Who's Who Among Black Americans*; Raymond B. Stewart Gavel of Authority Award, Florida Association of School Administrators; United Negro College Fund, honorary chairperson; Outstanding Citizen of the Year, Association for Retarded Citizens; The Hand of Friendship Award, NAACP ACT-SO Committee; William H. Turner Day, City of Miami; Arts and Letters Award, Miami Alumnae Chapter, Delta Sigma Theta Sorority, Inc.; Freedom Fighter Award, Greater Miami NAACP; Citizen of the Year, Phi Beta Sigma, Tau Zeta Chapter; Nathan W. Collier Meritorious Service Award, Florida Memorial College; William "Bill" Turner Day throughout Metropolitan Dade County; Melvin Rolle Memorial Award, *Liberty News* of Miami; recognized as a "Living Legend," W.D. Redmond Christian Academy **military service** U.S.

Army, 1951-1953 **religious affiliation** Episcopal **recreation** fishing and listening to jazz **addresses** (district) 9999 N.E. 2nd Avenue, Suite 207, Miami Shores 33138 (Tallahassee) 234 Senate Office Building, 32399-1100 **telephones** (district) 305/758-8100 (Tallahassee) 904/487-5116.



Charles Williams
Democrat, District 4

Realtor, insurance, farmer **born** March 25, 1939 in Gilchrist County **education** Florida State University, B.S., Business Administration, 1961; Alpha Kappa Psi; ROTC, commissioned 2nd Lieutenant upon graduation; ROTC Distinguished Military Student at FSU, 1961 **wife** Marilyn Jones of Branford **children** Charles III, Cherie, and Wesley **affiliations** Masonic Lodge, Rotary Club **legislative service** elected to the Senate in 1992, reelected subsequently **other public service**

Suwannee River Coordination Committee, 1990-1992; Suwannee County Commissioner: 1988-1992, Chairman, 1991-1992; member, Suwannee River Task Force, 1988-1990; North Central Florida Regional Planning Council, 1988-1992 **highlights** Organized Fishermen of Florida, Legislative Award, 1994; Florida Farm Bureau, Legislative Award, 1994; Small County Coalition, Leadership Award, 1994; Florida League of Cities, Quality Floridian, 1993; Northeast Florida Educational Consortium, Outstanding Freshman Senator, 1993; president: Polk County Association of Insurance Agents, Lakeland Association of Insurance Agents; One of Five Outstanding Young Men of Lakeland, 1968; president, Lakeland Jaycees, 1967 **military service** U.S. Army, 1962-1964 **religious affiliation** Baptist **recreation** fishing and hunting **addresses** (district) 102 Dowling Avenue, Live Oak 32060 (Tallahassee) 250 Senate Office Building, 32399-1100 **telephones** (district) 904/364-7777 (Tallahassee) 904/487-5017.

Non-member Officers

At its organization session every two years, the Senate designates a Secretary of the Senate and the President employs a Sergeant at Arms. These two officers are not members of the Senate. The Secretary keeps all Senate records and authenticates each act and resolution passed by the Senate. She also publishes the journal and the calendar and supervises Legal Research and Drafting, which drafts proposed legislation. The Sergeant maintains order in the chamber, in the gallery, and in committee rooms. He is responsible for the maintenance of all Senate property.



Faye W. Blanton
Secretary of the Senate

born November 9, 1946 in Tallahassee **education** Jones Business College, Jacksonville, 1967 **husband** Edwin F. (Ed) Blanton of St. Petersburg **children** Wade, Doug, and Laurel McDaniel; Garrett and Travis Blanton; grandchildren: Zachary Gillis and Garrett Blanton, Jr. **affiliations** American Society of Legislative Clerks and Secretaries, past staff vice president, and chairman, vice-chairman and member of various committees; past Leon County School District Advisory Board

member; PTO President; Advisor and Counselor for: Girls State, YMCA Youth Legislature, and Silver-Haired Legislature **legislative service** Committee secretary, Senate Governmental Efficiency Committee, 1970-1972; Administrative Assistant to Director of Management and Staff, 1973-1974; Assistant to Secretary of the Senate, 1974-1984; Assistant Secretary of the Senate, 1984-1996; designated Secretary of the Senate, November 19, 1996 **highlights** first woman designated as Secretary of the Florida Senate for a two-year term **religious affiliation** Baptist **recreation** gardening, walking, and reading **address** Suite 405, The Capitol, 32399-1100 **telephone** 904/487-5270.



Wayne W. Todd, Jr.
Sergeant at Arms

born July 19, 1944 in Tallahassee **education** Florida State University, B.S., 1968; attended Florida State University College of Law **wife** Ann Sadler of St. Petersburg **children** Kathryn Jennifer Tennyson and Julie Hunt **affiliations** Tallahassee Ballet Board of Directors **legislative service** Acting Sergeant at Arms of the Senate, 1982; elected Sergeant at Arms of the Senate, November 16, 1982; President, National Legislative Services and Security Association, 1985-1987; National

Conference of State Legislatures, Executive Board, 1988-1990 (member, Legislative Staff Coordinating Committee Task Force on Professional Staff Development); member, Assembly for State Issues (Legislative Management Committee) **highlights** Florida Jaycees "Distinguished Service Award," 1977; United States Jaycees Outstanding Young Men of America, 1974; Jaycees Governmental Affairs Committee, State Chairman; U.S. Marshal's Training Academy, Washington, D.C., "Specialized Security" certificate, 1972 **military service** Florida National Guard, 1962-1966 **religious affiliation** Methodist **recreation** hunting and fishing **address** Suite 403, The Capitol, 32399-1100 **telephone** 904/487-5224.

A PHOTOGRAPHIC TOUR OF THE 1996-1998 FLORIDA SENATE



Supreme Court Justice Charles T. Wells administers the oath of office to President Toni Jennings and to President Pro Tempore Roberto Casas.



The oath of office is administered to Senators Skip Campbell, Tom Rossin, Jim Scott, Roberto Casas, Ken Jenne, Mario Diaz-Balart, Fred Dudley, Ron Klein, Tom Lee and Jim Hargrett.



President Jennings works with policy directors.



A bill begins with a consultation in Legal Research and Drafting Services.



Friendly service is a hallmark of Senate Documents.



The Committee on Health Care at work on an interim project.



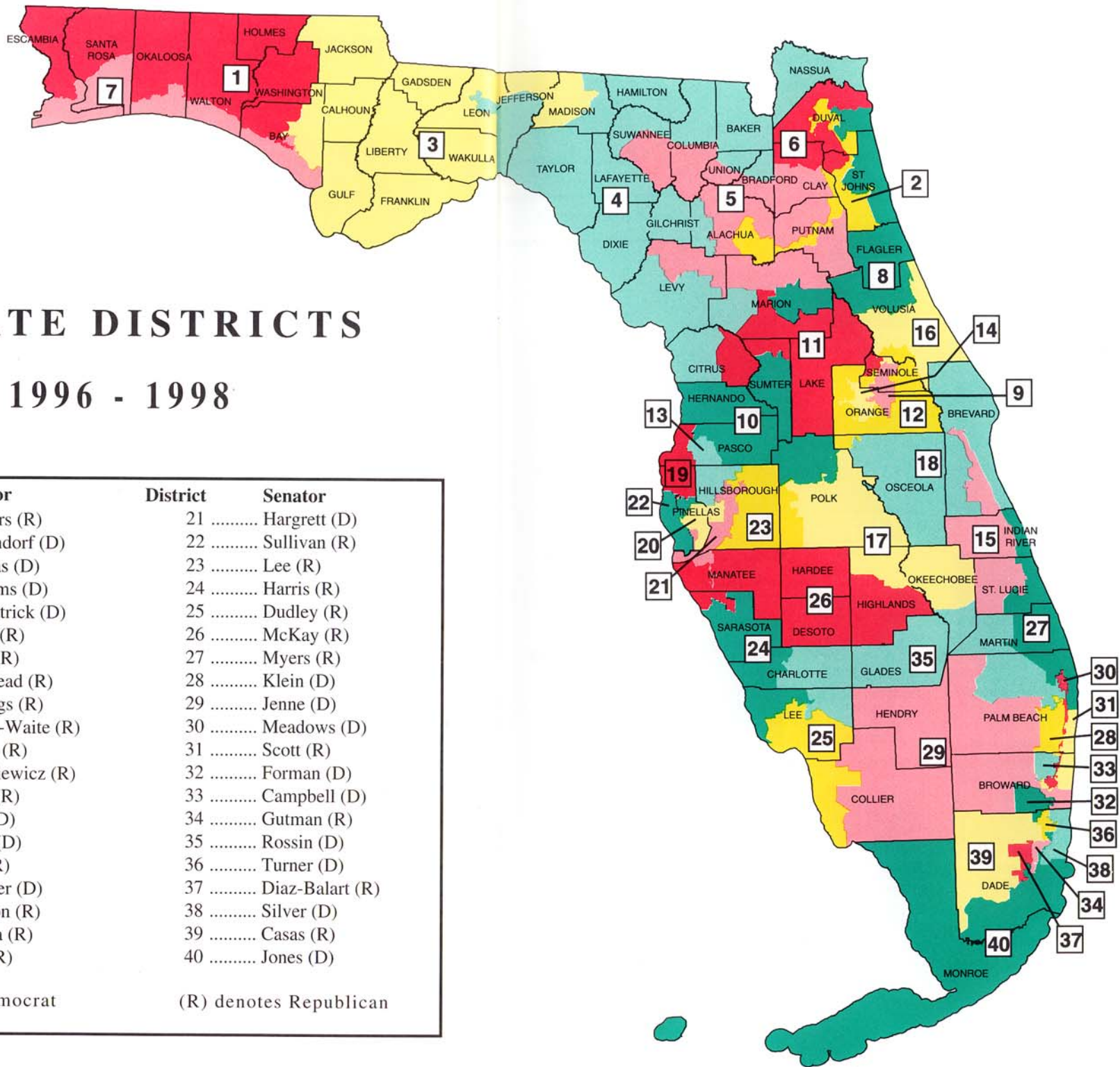
A presentation before the Rules and Calendar Committee meeting.



Secretary of the Senate Faye Blanton encourages tomorrow's leaders.

SENATE DISTRICTS

1996 - 1998

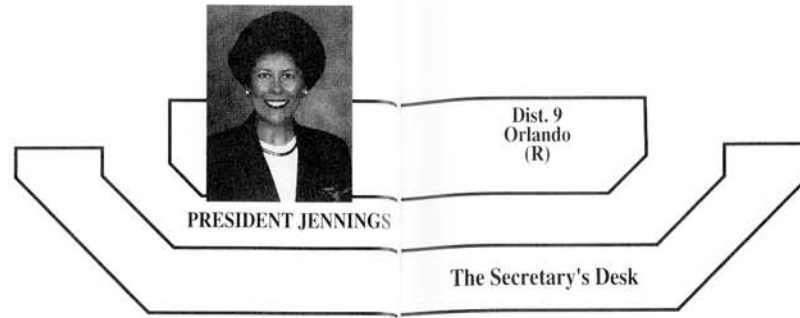


District	Senator	District	Senator
1	Childers (R)	21	Hargrett (D)
2	Holzendorf (D)	22	Sullivan (R)
3	Thomas (D)	23	Lee (R)
4	Williams (D)	24	Harris (R)
5	Kirkpatrick (D)	25	Dudley (R)
6	Horne (R)	26	McKay (R)
7	Clary (R)	27	Myers (R)
8	Bankhead (R)	28	Klein (D)
9	Jennings (R)	29	Jenne (D)
10	Brown-Waite (R)	30	Meadows (D)
11	Cowin (R)	31	Scott (R)
12	Ostalkiewicz (R)	32	Forman (D)
13	Grant (R)	33	Campbell (D)
14	Dyer (D)	34	Gutman (R)
15	Kurth (D)	35	Rossin (D)
16	Burt (R)	36	Turner (D)
17	Dantzler (D)	37	Diaz-Balart (R)
18	Bronson (R)	38	Silver (D)
19	Latvala (R)	39	Casas (R)
20	Crist (R)	40	Jones (D)

(D) denotes Democrat (R) denotes Republican

THE FLORIDA SENATE

1996-1998



BROWN-WAITE
(R) Dist. 10
Brooksville



HORNE
(R) Dist. 6
Jacksonville



WILLIAMS
(D) Dist. 4
Live Oak



HOLZENDORF
(D) Dist. 2
Jacksonville



CASAS
(R) Dist. 39
Hialeah



BANKHEAD
(R) Dist. 8
Jacksonville
Rules Chairman



CHILDERS
(R) Dist. 1
Pensacola



THOMAS
(D) Dist. 3
Quincy



KIRKPATRICK
(D) Dist. 5
Gainesville



CLARY
(R) Dist. 7
Destin



CRIST
(R) Dist. 20
St. Petersburg



BRONSON
(R) Dist. 18
Indian Harbour Beach



OSTALKIEWICZ
(R) Dist. 12
Orlando



DYER
(D) Dist. 14
Orlando



BURT
(R) Dist. 16
Ormond Beach
Majority (Republican) Leader



JENNE
(D) Dist. 29
Ft. Lauderdale
Minority (Democratic) Leader



GRANT
(R) Dist. 13
Tampa



KURTH
(D) Dist. 15
Palm Bay



DANTZLER
(D) Dist. 17
Winter Haven



LATVALA
(R) Dist. 19
Palm Harbor



MEADOWS
(D) Dist. 30
Lauderhill



KLEIN
(D) Dist. 28
Boca Raton



McKAY
(R) Dist. 26
Bradenton



HARRIS
(R) Dist. 24
Sarasota



SULLIVAN
(R) Dist. 22
Seminole



HARGRETT
(D) Dist. 21
Tampa



LEE
(R) Dist. 23
Brandon



DUDLEY
(R) Dist. 25
Cape Coral



ROSSIN
(D) Dist. 35
West Palm Beach



COWIN
(R) Dist. 11
Leesburg



JONES
(D) Dist. 40
Miami



SILVER
(D) Dist. 38
North Miami Beach



TURNER
(D) Dist. 36
Miami Shores



GUTMAN
(R) Dist. 34
Miami



FORMAN
(D) Dist. 32
Hollywood



SCOTT
(R) Dist. 31
Ft. Lauderdale



CAMPBELL
(D) Dist. 33
Tamarac



MYERS
(R) Dist. 27
Stuart



DIAZ-BALART
(R) Dist. 37
Miami



JENNINGS
(R) Dist. 9
Orlando
President



SECRETARY
Faye W. Blanton

SERGEANT AT ARMS



Wayne Todd

The Senate Chamber

Frequently before a session of the Senate convenes, Senators can be seen rushing "to the floor." They're headed for the chamber on the fourth floor of the Capitol where they debate the merits of proposed legislation. This is the fourth chamber used since the first session of the Senate was called to order in 1839. The first session held in this chamber was in 1978.

On the floor above the chamber is the gallery. Citizens may be seated in the gallery to observe the Senate in session. From the gallery, attention is drawn to the rostrum where the President is presiding.

The President occupies the "chair," pacing the flow of legislation, deciding who will speak, and ruling on parliamentary disputes. The President frequently calls on other members to preside while she works out the details of legislative proposals. If the President wishes to debate an issue before the Senate, she will vacate the chair and speak from her regular desk on the floor.

The portraits hanging below the gallery commemorate past Presidents of the Senate. After each President's two-year term a portrait is painted and hung in this area. The portraits are arranged in chronological order with the most recent one on the presiding officer's right. Since all spaces are now filled, each time the newest one is added, the oldest one is taken down and moved to the Historic Capitol, keeping 100 years of past Presidents on display in the "new" chamber.

Under the direction of President Toni Jennings a new chamber automation system, designed to display amendments and information on bills, will be used for the first time during the 1997 session. Senators will have the flexibility of accessing the chamber automation system from their Tallahassee offices and in the Senate chamber on their laptop computers.

Just above the President's rostrum is the screen used to welcome groups of visitors watching from the gallery. In the booth on the left side of the screen, computer operators record the Senate's actions into the legislative information network. The booth on the right houses the chamber's sound system operators.

In front of the President's rostrum is the Secretary's "desk," that is staffed by the Secretary of the Senate. Legislative business is not properly before the Senate until it is "on the desk." Clerks at this desk read the bills and amendments before the body and record Senate actions. These actions are published in the journal, the official record of Senate proceedings. The chamber automation system, the video system, and the voting boards are also operated from this desk. A Senator who wishes to "approach the well" to make a speech on a particularly important matter speaks from one of the reading podiums at the Secretary's desk.

Voting boards on each side of the chamber record a member's green "yea" or red "nay" vote. (The white lights you see next to some names indicate that the Senator wants a "page" to deliver a message or retrieve a file from his or her office). The voting boards also display the number of the bill or amendment being debated and other information related to the proceedings. Electronic voting was first used in the Senate in 1966, and now nearly all votes are recorded electronically.

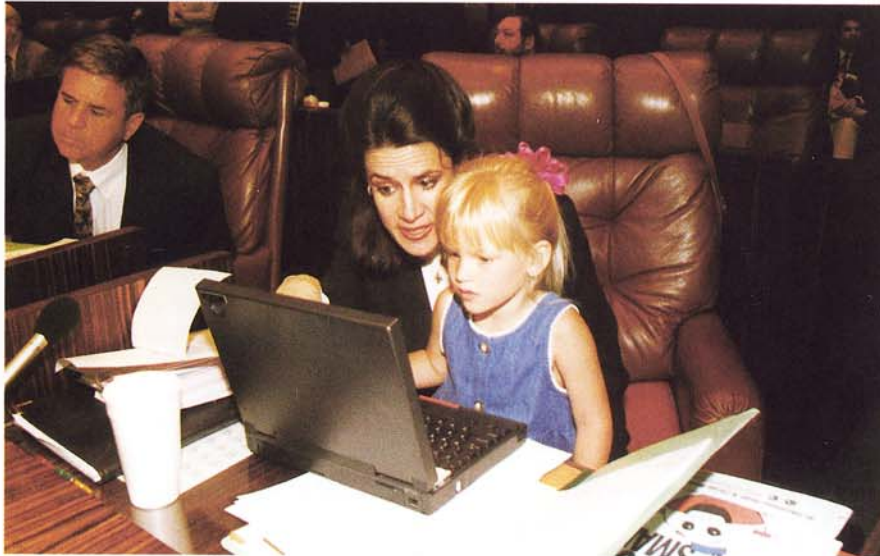
The seating arrangement in the chamber is determined by district number. Senators from odd-numbered districts sit on the President's left, and those representing even-numbered districts sit on the right. There are exceptions to this tradition. The Chairman of the Committee on Rules and Calendar sits in the first seat to the President's left in the front row and the Minority (Democratic) Leader sits directly behind him. The President Pro Tempore is seated to the President's right in the front row, with the Majority (Republican) Leader seated directly behind him. With these exceptions, the seats are arranged numerically. The front row numbers represent single-digit districts, the second row all teens, the third row the twenties and the back row holds the thirties and number 40.

At one time, the chamber desk was a member's only desk. Members' secretaries sat beside them in the chamber, even during sessions. Often a Senator would interrupt a letter he was dictating to rise and speak on a bill, then return to his correspondence after he had had his say. Now adequate office space is provided for the Senators and their staff; telephones at each chamber desk provide direct communication with the staff. Today, only members of the Senate and designated staff members are allowed in the chamber while the Senate is in session. Certain present and past state officials and guests invited by the President may also enter the chamber during a session. All men in the chamber must wear coats and ties.

Senators are addressed by their district number when they are recognized to speak. Custom decrees that a Senator may not be addressed as a gentleman or lady, as are members of the House of Representatives. He or she is "the Senator from the thirty-fifth," for example, but never "the gentleman or lady from the thirty-fifth." During debate, the members are always formally addressed as "Senator," not by their given names.

In the room at the right rear of the chamber, staff attorneys draft "floor amendments" to bills being debated. The caucus room at the left rear is frequently used for quick conferences of Senators, often with their colleagues from the House of Representatives. Just over the main entrance is the press gallery, where members of Florida's press corps record history. The remainder of the gallery is open to the public at all sessions, except that a portion of the gallery is usually reserved for the Senators' families and other sections are often reserved for visiting students.

Television cameras from Florida Public Broadcasting are positioned at the front and rear of the gallery to provide live, televised coverage of all Senate sessions. Each weekday evening during the session, public television stations broadcast "Today in the Legislature," a one-hour program summarizing that day's legislative action. The broadcasts are funded by the Legislature, but all editorial content is determined by the group of professional journalists who produce the programs. Florida's legislative telecasts were used as a model for a similar system installed in 1979 in the U.S. House of Representatives.



Senator Katherine Harris demonstrates the use of her laptop computer to a future Senator.

Presidents of the Senate

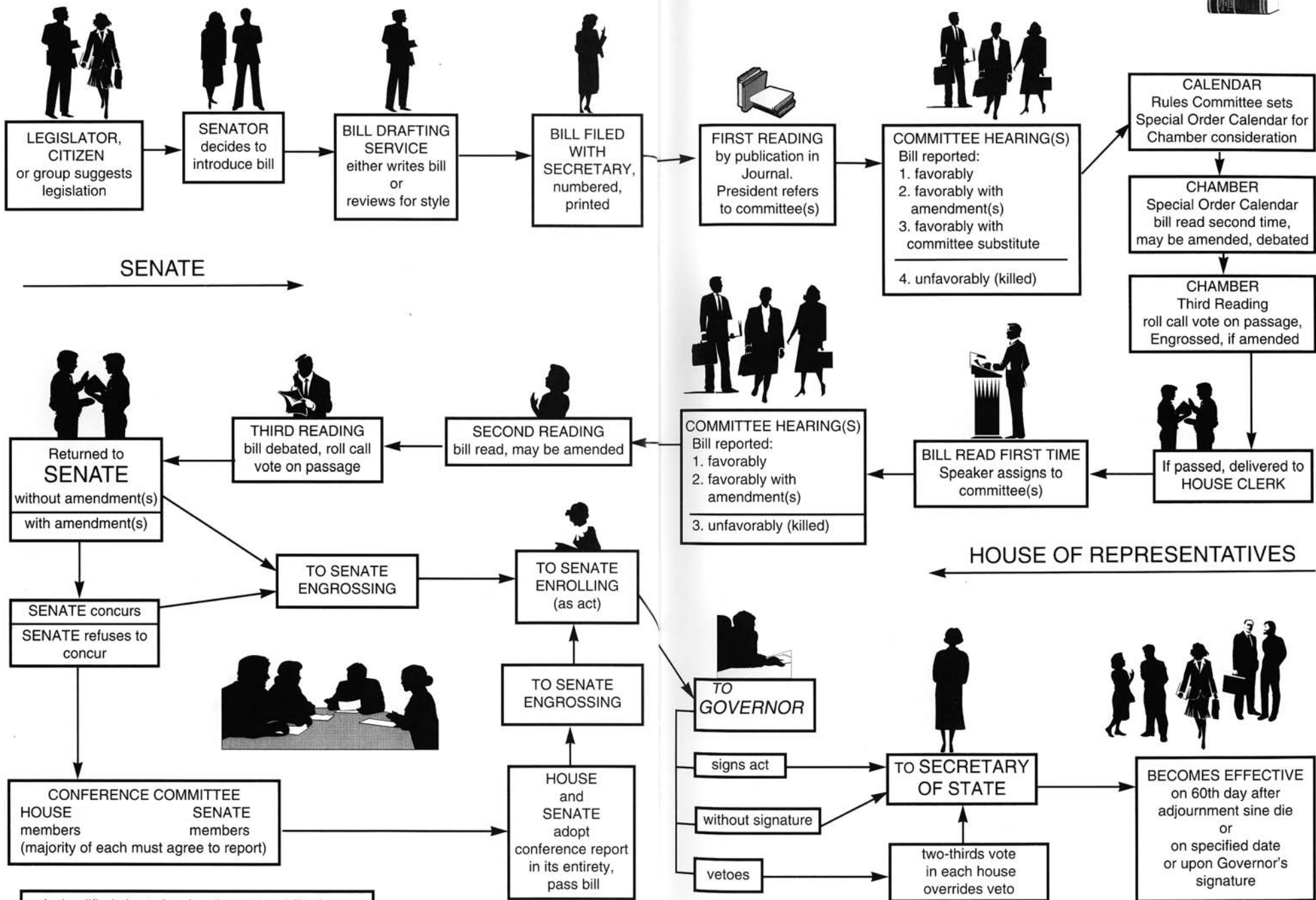
Session	President	Session	President
1839-40	John Warren	1927	Samuel W. Anderson
1841	William P. Duval	1929	Jesse J. Parrish
1842	William H. Brockenbrough	1931	Patrick C. Whitaker
1843-44	George Walker	1933	Truman G. Futch
1845	James A. Berthelot	1935	William C. Hodges
1846	Dennitt H. Mays	1937	D. Stuart Gillis
1847	Daniel G. McLean	1939	J. Turner Butler
1848	Erasmus D. Tracy	1941	John R. Beacham
1850-52	Robert J. Floyd	1943	Philip D. Beall
1854-55	Hamlin V. Snell	1945	Walter W. Rose
1856	Philip Dell	1947-48	S. Dilworth Clarke
1858-59	John Finlayson	1949	Newman C. Brackin
1860-61	Thomas Jefferson Eppes	1951	Wallace E. Sturgis
1862-63	Enoch J. Vann	1953	Charley E. Johns
1864	Abraham K. Allison	1955-56	W. Turner Davis
		1957	William A. Shands
		1959	Dewey M. Johnson
		1961	W. Randolph Hodges
		1962-63	F. Wilson Carraway
		1965	James E. Connor
		1967	Verle A. Pope
		1968-70	John E. Mathews, Jr.
		1970-72	Jerry Thomas
		1972-74	Mallory E. Horne
		1974**	Louis de la Parte
		1974-76	Dempsey J. Barron
		1976-78	Lew Brantley
		1978-80	Philip D. Lewis
		1980-82	W. D. Childers
		1982-84	Curtis Peterson
		1984-86	Harry A. Johnston II
		1986-88	John W. Vogt
		1988-90	Bob Crawford
		1990-92	Gwen Margolis
		1992-93	Ander Crenshaw
		1993-94	Pat Thomas
		1994-96	James A. Scott
		1996-98	Toni Jennings

From 1865 through 1887 the Lt. Governor served as President.

*Extended Session

**Served as Acting President from July 1, 1974 when President Horne resigned until November 6, 1974

HOW AN IDEA BECOMES A LAW



A simplified chart showing the route a bill takes through the Florida Legislature. Bills may originate in either house. This bill originated in the Senate.

Three Branches of Government

Florida's Constitution, in the traditional American pattern of "separation of powers," divides the governmental structure of the state into three separate and independent branches.

The *Legislative Branch* has exclusive law-making power and determines the general policies by which the problems of society are to be met. It may delegate limited rule-making power to some executive agencies.

The *Executive Branch*, with the Governor as its chief, administers the laws made by the Legislature. The Cabinet—composed of the Secretary of State, Attorney General, Comptroller, Treasurer, Commissioner of Agriculture, and Commissioner of Education—shares some executive power and responsibilities with the Governor.

The *Judicial Branch* interprets the law and applies the Constitution. The judiciary also presides over trials, although certain limited administrative disputes may be decided by executive agencies when authorized by law.

This structural division, faithfully maintained, sets up a system of "checks and balances" to ensure that all three branches properly perform their constitutional duties in the administration of state affairs.

The Legislative Branch

Composition and organization

Florida's Legislature is composed of two houses, the Senate and the House of Representatives. Each house is the sole judge of the qualifications and elections of its members and has the power to choose its own officers and establish its own rules of procedure. All legislative sessions are open to the public, except executive sessions of the Senate when appointments or suspensions of public officials are considered. Either house of the Legislature may initiate legislation on any subject.

The State Constitution, adopted in 1968, provides that the Legislature shall be apportioned into not less than 30, nor more than 40, senatorial districts; and not less than 80, nor more than 120, representative districts. The Legislature met that mandate during the 1972 session when it established 40 Senate districts and 120 House districts and membership of each house has since remained at that same number. Senators serve four-year terms and representatives serve two-year terms. While a legislator may be elected for more than one term, he may not seek reelection if at the end of his current term he has served for eight consecutive years.

Elections and qualifications

The Constitution requires that members of the Legislature be elected at the general election in November of even-numbered years. Party candidates are nominated in party primary elections held prior to the general

elections. Members of the Legislature must be at least 21 years old, electors and residents of the districts they represent, and Florida residents for two years prior to election.

Legislative sessions

Two weeks after each general election, the Legislature convenes for the exclusive purpose of organization and election of officers. Even though officers are formally elected during this organization session, they may previously have been designated by their respective party caucuses. No legislation is considered during the organization session.

Regular sessions of the Legislature begin on the first Tuesday after the first Monday in March in odd-numbered years and continue for sixty consecutive days. The Legislature may by law change its convening date in even-numbered years but generally leaves the date the same as in odd-numbered years except once every 10 years when it deals with reapportionment.

Special sessions may be called by the Governor, or may be convened by joint proclamation of the President of the Senate and the Speaker of the House of Representatives. Special sessions may not exceed twenty days, unless extended by a three-fifths vote of each house. Each "call" for a special session outlines the business to be considered. The Legislature may also be convened in special session under specified circumstances. The Senate may resolve itself into executive session to consider appointment to or removal from public office even when the House of Representatives is not meeting.

Committees

The committee is the heart of the legislative process, functioning to study, research, and plan solutions to "people problems." The Senate and House rules provide for certain standing committees, special or select committees, and subcommittees. The presiding officers name the chairmen and members of all committees.

Bills are assigned to one or more committees for study. In this preliminary screening the committees may hold public hearings where committee members hear sponsoring legislators and others in the industry or profession, the governmental agency, or the general public, who are interested in the bill. The committee then votes to recommend the bill favorably; unfavorably, with a committee substitute; unfavorably; or favorably with amendments to be considered when the bill is debated on the floor by the full Senate.

When the Senate and House are unable to agree on the final content of a bill, it goes to a conference committee. This committee, composed of members of both houses, tries to resolve the differences between the Senate and House versions of a bill. The conference committee report may not be amended and must be approved by both houses.

Other committees commonly used are joint committees, which are composed of members from each house, and select committees, which are usually appointed

to make recommendations on special or unique problems.

The Joint Legislative Management Committee supervises services that can be shared by both houses, thereby affording better facilities at a reduced cost. The Joint Legislative Auditing Committee, another joint Senate-House committee, employs an Auditor General who audits governmental agencies.

Florida's Public Counsel is also an office of the Legislature. The Public Counsel represents Florida consumers in utility-rate cases.

The Joint Administrative Procedures Committee, the Joint Legislative Committee on Intergovernmental Relations, the Joint Information Technology Resources Committee, and the Office of Program Policy Analysis and Government Accountability are also part of the legislative branch.

Lobbying By definition a lobbyist is anyone who tries to influence legislation. Unless exempt, all persons who seek to influence legislation must register with the Joint Legislative Management Committee before they begin lobbying. Every lobbyist must also state any direct business association or partnership with any current member of the Legislature and make periodic reports on moneys spent lobbying.

Forms of legislation Legislative proposals may be in the form of bills, resolutions, concurrent resolutions, joint resolutions, or memorials. A bill is a proposed law, and it may be either a general bill or a local bill. A general bill would have a general impact within the state; a local bill would affect only a particular county, city, or town named in the bill. A majority vote is required to pass a bill.

A resolution expresses the opinion of one house of the Legislature, whereas a concurrent resolution expresses the opinion of both houses. A joint resolution is usually a proposal to amend the State Constitution, to apportion the Legislature, or to set the effective date of a vetoed bill when the veto is overridden. Resolutions, concurrent resolutions, and joint resolutions are passed by a majority vote, except that a three-fifths vote of the members of both houses is required to pass a joint resolution that proposes an amendment to the State Constitution. A memorial is a petition addressed to the President of the United States, the Congress, or some official agency of the federal government. It requests action or expresses the Legislature's collective viewpoint and is passed by a majority vote.

Impeachments The Governor, Lieutenant Governor, members of the Cabinet, justices of the Supreme Court, and judges may be removed from office only by impeachment. The House of Representatives has the sole power to impeach, that is, to bring charges. The Senate then tries all impeachments, with the Chief Justice of the Supreme Court presiding. A two-thirds vote of the Senate is required to convict. If convicted, the officer is removed from office.

STATE DESIGNATIONS

Air fair:	Central Florida Air Fair
Animal:	Florida panther
Band:	St. Johns River City Band
Beverage:	<i>Citrus sinensis</i> (orange juice)
Bird:	Mockingbird
Butterfly:	Zebra Longwing
Festival:	"Calle Ocho-Open House 8"
Fiddle contest:	<i>see</i> section 15.048, Florida Statutes
Flower:	Orange Blossom
Freshwater fish:	Florida largemouth bass
Gem:	Moonstone
Litter control symbol:	The official Keep Florida Beautiful, Incorporated, service mark
Marine mammal:	Manatee (sea cow)
Motto:	"In God We Trust"
Moving image center and archive:	Louis Wolfson II Media History Center, Inc.
Nickname:	Sunshine State
Opera program:	<i>see</i> section 15.044, Florida Statutes
Pageant:	"Indian River"
Play:	"Cross and Sword"
Railroad museums:	<i>see</i> section 15.045, Florida Statutes
Renaissance festival:	<i>see</i> section 15.0445, Florida Statutes
Reptile:	American alligator
Rodeo:	Silver Spurs Rodeo
Saltwater fish:	Atlantic sailfish
Saltwater mammal:	Porpoise (dolphin)
Shell:	Horse conch
Soil:	Myakka fine sand
Statewide trail:	Florida National Scenic Trail
Stone:	Agatized coral
Transportation museum:	Florida Museum of Transportation and History
Tree:	Sabal palmetto palm
Wildflower:	Coreopsis

EVENTS IN FLORIDA'S HISTORY

1819-1845

9000 B.C. Florida may first have been seen by Indian wanderers who crossed a land bridge from Siberia to Alaska during the late Pleistocene or Ice Age. Their presence in Florida may be surmised from stone points of javelins and spears found in conjunction with bones of large animals long extinct.

5000 B.C. First semi-permanent settlements appeared in Florida as the Indians depended in a large degree upon snails, mollusks, and freshwater shellfish.

1498-1586

◆ **1498-1528** John Cabot viewed in 1498 or 1499 a great bay that may have been Miami's Biscayne Bay. Giovanni da Verrazano likely reached the coast of Florida during a voyage in 1528. The Cantino map of 1502 shows a New World peninsula not unlike Florida. ◆ **1513** Juan Ponce de Leon sighted Florida on March 27. Going ashore between April 2 and 8 in the vicinity of St. Augustine, he named the land "Pascua Florida" because of its discovery "in the time of the Feast of Flowers." ◆ **1516-1561** Florida explored by Ponce de Leon; Panfilo de Narvaez; Hernando de Soto; and Tristan de Luna, who established a colony on the shores of Pensacola Bay in 1559. ◆ **1562** Jean Ribault, searching for a site for a Huguenot colony, entered the St. Johns River on April 30. ◆ **1565** On August 28, Pedro Menendez de Aviles, celebrating the feast day of Saint Augustine with a High Mass, gave the place the name of San Augustin (afterwards St. Augustine). ◆ **1586** Sir Francis Drake sacked and burned St. Augustine.

1600-1698

◆ **1600** San Marcos de Apalache (St. Marks) was a fort and a settlement of consequence by the 1680s. Possession of Pensacola was reestablished in 1698. ◆ **1605** Franciscan friars were conducting a primary school in the Convent of the Immaculate Conception, where a "*maestro de gramatica*" instructed the children of St. Augustine. ◆ **1672-1698** Thirty years in building, the *Castillo de San Marcos* was finished at St. Augustine. This fort of coquina, a rock formed of sand and shell, provided a bastion for the Spanish in East Florida.

1783-1795

◆ **1783** Florida was returned to Spain by the British for the Bahamas. Florida's first newspaper, the *East Florida Gazette*, was published at St. Augustine by William Charles Wells. ◆ **1795** Treaty between the United States and Spain as to Florida's western boundary.

◆ **1819** American Secretary of State John Quincy Adams and Spanish Minister Luis de Onis reached an agreement, finally ratified by both nations in 1821, by which Spain gave the United States title to East and West Florida. ◆ **1822** The unified government of Florida was established March 30, 1822, when President Monroe signed into law the Congressional act providing for a Governor and a Legislative Council of 13 citizens, appointed by the President and confirmed by the Senate. William P. DuVal, a Virginian who grew to manhood in Kentucky, became the first Territorial Governor. ◆ **1824** Governor DuVal, on March 4, proclaimed the site of today's Tallahassee as the seat of the new Territory, with the Legislative Council meeting there in November at a log house erected in the vicinity of today's Capitol. ◆ **1830** Population 34,730 ◆ **1834-1837** Florida's first railroads began operation. The Tallahassee-St. Marks road was first incorporated (February 10, 1834). The St. Joseph-Lake Wimico line was the first to get into service (early March 1836). St. Joseph put in service the state's first steam locomotive (September 5, 1836). ◆ **1835** Beginning of the Seminole War. Major Francis L. Dade and Chief Osceola were major figures in this war. ◆ **1838-1839** Fifty-six commissioners elected from Florida's 20 counties gathered at Saint Joseph to draft a constitution in anticipation of statehood. The convention lasted from December 3, 1838, until January 11, 1839. ◆ **1840** Population 54,477 ◆ **1842** Seminole War ended. ◆ **1845** President John Tyler on March 3, signed into law the act granting statehood to Florida with its 57,921 people. First State Governor was William D. Moseley. Elected to Congress as first Representative was David Yulee.

1850-1898

◆ **1850** Population 87,445 ◆ **1851** Dr. John Gorrie of Apalachicola patented the process of making ice artificially, a process he had developed in 1845 to cool the rooms of feverish patients. ◆ **1860** The Florida Railroad, first cross-state line, linked Fernandina, on the east coast, with Cedar Key on the west. Population 140,424; voting population, 14,374 ◆ **1861** Florida withdrew from the Union on January 10. Florida was admitted to the Confederacy on February 4, but remained an independent nation until April 22, when the Secession Convention ratified the Constitution of the Confederate States of America. ◆ **1861-1865** Florida furnished salt, beef, and bacon to the armies of the Confederacy. ◆ **1865** Home Guards and Cadets from West Florida Seminary saved Tallahassee from capture by turning back invading federal forces at the Battle of Natural Bridge. The war ended with Tallahassee the only Confederate state capital east of Mississippi to escape occupation. Federal troops entered Tallahassee on May 10, and the American flag again flew over the Capitol on May 20. A Constitutional Convention, convened on October 25, annulled the Ordinance of Secession and decreed that slavery no longer existed. ◆ **1868** The faction-torn convention submitted a new Constitution, given voter-approval in May, which granted equal suffrage to male persons of "whatever race, color, nationality, or previous condition . . ." ◆ **1870** Population 187,748 ◆ **1884** The first train of the new Plant System, created of many short-lines in the south by Henry B. Plant, rumbled

into Tampa to produce the agricultural and industrial awakening of the West Coast. ♦ **1885** A Constitutional Convention of 56 days broadened people's share in their government. Cabinet posts were made elective, as were those of Justices of the Supreme Court and all county offices except county commissioner. The State Board of Education was created. The establishment of normal schools was authorized. ♦ **1886** Requiring a railroad adequate to serve a great hotel he had built at St. Augustine, Henry M. Flagler bought the first transportation link in the chain of railroad and hotel properties he constructed down the East Coast to Key West. ♦ **1888** The first commercial shipment of phosphate from the Peace River Valley, in the southwestern peninsular, where the mineral had been discovered in 1881. ♦ **1889** A yellow fever epidemic brought creation of the State Board of Health. ♦ **1890** A national convention of Farmers' Alliance, a predecessor of the Populist Party, held in Ocala. Population 391,422 ♦ **1894-1899** Repeated frosts killed much citrus and sent the industry southward. ♦ **1897** The State Railroad Commission was established with authority to promulgate "reasonable and just" passenger and freight rates, and to correct transportation abuses. Floridians gave aid and comfort to the Cubans rebelling against Spain. ♦ **1898** The Spanish-American War saw embarkation camps at Tampa, Miami, and Jacksonville, with thousands of soldiers and others who later returned to visit or to live.

1900-1949

♦ **1900** Population 528,542 ♦ **1901** On May 3, flames raced for eight hours across the heart of Jacksonville, covering 146 city blocks and destroying 2,368 buildings, including 23 churches and 10 hotels. ♦ **1905** The Buckman Act consolidated state institutions of higher learning into three: the University of Florida at Gainesville, Florida State College for Women at Tallahassee, and the Florida Agricultural and Mechanical College for Negroes at Tallahassee. ♦ **1906** Hundreds of workers on the Florida East Coast Railway's Overseas Extension were lost when a hurricane swept the Keys on October 18. Miami was battered. ♦ **1908** With \$400 capital the Kalem Company made in Jacksonville what is regarded as the first dramatic motion picture in Florida. It was entitled *A Florida Feud*. ♦ **1911** In March, Lincoln Beachey, at Tampa, made the first night flight in history. He also set a new world's altitude record of 11,500 feet over Tampa during this year. ♦ **1912** R.C. Fowler, in January, started the second transcontinental flight at Jacksonville, flying to San Francisco, a distance of 2,232 miles, in 151 days. ♦ **1913** Governor Park Trammell sponsored the first Corrupt Practices Law, to reduce the legal cost of seeking public office. The law allowed the expenditure of \$4,000 by the candidates for the U.S. Senate and for Governor; \$3,500 for cabinet positions. The Legislature also enacted a law for state-conducted primary elections. On May 17, Domingo Rosillo flew across the Straits of Florida from Key West to Havana in two hours and 30 minutes. ♦ **1914** On January 1, the first regularly scheduled commercial airline between two U.S. cities was established at St. Petersburg as Antony Jannus flew St. Petersburg's Mayor A.C. Pheil and freight to Tampa. ♦ **1915** The first legal steps were taken toward establishment of a state constructed and maintained system of highways, a governmental function left previously to local agencies but requiring

emergency measures because of rapid development of automobiles and tourist traffic. ♦ **1917** Senator Oscar Eaton of Polk County introduced a bill to appropriate \$300,000 for citrus canker eradication. ♦ **1917-1918** Florida was the scene of training for World War I fighting men, particularly aviators, as weather permitted year-round activity. On October 27, 1918, air passenger service between Key West and Havana was inaugurated by Aeromarine Company. ♦ **1919** The first guided missiles were tested at Carlstrom Field, Arcadia, in September. ♦ **1920** A campaign to eradicate the Texas cattle tick saw Georgia erect along the boundary a double barbed wire fence, policed by riders, to keep infested Florida cattle from straying into Georgia. Within Florida, for the same purpose, counties were quarantined against other counties. Dipping vats were used to kill the ticks. Population 968,470 ♦ **1922** The U.S. Department of Commerce issued its first Florida radio broadcasting license on May 15, 1922, to WDAE, Tampa. WFAW, afterwards WQAM, Miami had commenced broadcasting in 1920 with a 50-watt transmitter assembled by Frederick William Borton from materials in a shop specializing in electrical repairs to automobiles and fixtures. ♦ **1925** Mark Sullivan, in his book *Our Times*, said of Florida's land boom: "All of America's gold rushes, all her oil booms, and all her free-land stampedes dwindled by comparison with the torrent of migration pouring into Florida during the early fall of 1925." ♦ **1926** Florida Airways Corporation, on April 1, became the nation's second airline to commence domestic airmail service. ♦ **1927** On October 28, a chartered Fokker trimotor airplane rumbled along the dirt runway of Key West's Meacham Field to inaugurate both Pan American Airways and airmail service to Havana. The Pan American plane carried 28 sacks of mail over the 90 miles of water. Service for paying passengers began three months later. ♦ **1928** Hurricane winds and water on September 16 brought death to 1,850-2,000 persons on the southeastern shores of Lake Okeechobee, perhaps the third after the Galveston Hurricane and Johnstown flood among America's natural catastrophes. The loss of life was so great that funeral pyres were required. ♦ **1929** An infestation of Mediterranean fruit fly required tons of citrus fruit to be destroyed in 20 mid-state counties. ♦ **1930** Eastern Air Transport, Inc. (formerly Pitcairn Aviation, Inc.) in April inaugurated service between New York and Miami, changing pilots at Jacksonville. Population 1,468,211 ♦ **1931** The Legislature, applying part of the proceeds of a gasoline tax, secured bonds issued by counties for roads and bridges during the expansion period of the 1920s. Pari-mutuel wagering at horse and dog tracks was legalized. ♦ **1934** The Depression-exhausted Key West City Council and the Monroe County Commission signed over their powers to the Federal Emergency Relief Administration. FERA's administrator initiated a program to make Key West the American winter resort of the tropics. ♦ **1935** A storm in the Florida Keys brought death to upwards of 400 persons, including some 200 veterans of World War I. A remnant of the Bonus Army which had marched on Washington, the veterans were employed on highway construction as a federal work relief project. ♦ **1937** On June 1, Amelia Earhart took off from Miami on the first overwater leg of a round-the-world flight. Flying a new Lockheed Pegasus, she was accompanied by Fred Noonan, veteran aerial navigator. They disappeared over the Pacific on July 2 in an aura of mystery. ♦ **1939** The Highway Patrol, financed from the sale of driver licenses, was established. ♦ **1940** The ad valorem tax for state purposes was abolished. A constitutional amendment

authorized the Legislature to create a parole commission for the supervised release of worthy prisoners. Population 1,897,414 ♦ **1941-1945** Florida hummed with World War II industry, as training grounds for tens of thousands of men and women of the armed forces at camps like Camp Blanding and Camp Gordon Johnston and in the forging of vessels and tools for the conflict. Tourist hotels and restaurants at Miami Beach, Daytona Beach, St. Petersburg, and other resort centers afforded quick means for accommodating hordes of trainees. ♦ **1943** A cigarette tax was levied to replace the war-lost revenue from horse and dog racing. ♦ **1945** The cigarette tax was increased from three cents to four and taxes on beer and other alcoholic beverages were raised to finance a multi-million dollar improvement program at state institutions and to provide more money for schools. A state advertising program of \$500,000 a year was instituted. ♦ **1946** The end of World War II allowed the start of public institutional improvements and a statewide building boom. ♦ **1947** The Legislature enacted a Minimum Foundation Program to put a floor under educational opportunity for children in elementary schools of all counties and to encourage teachers to improve their qualifications by offering better pay for better training. Florida State College for Women transformed into coeducational Florida State University. The University of Florida was opened to female students. ♦ **1949** The Legislature banned livestock from highways; enacted an omnibus citrus law designed to raise marketing standards for fresh and canned fruit; overhauled election laws; enacted three-percent limited retail sales tax; shared the proceeds of an increased cigarette tax with cities; and earmarked money from the seventh cent of gasoline tax (previously used for schools and general government) for roads.

1950-1969

♦ **1950** Frozen concentrates of citrus juices became a major industry. Population 2,771,305 ♦ **1952** Voters amended the Constitution to allow the pledge of motor vehicle tax revenue for school construction. ♦ **1953** An institutional building program was authorized, particularly to catch up the lag in mental hospitals. ♦ **1954** The first Republican since 1885 was elected to Congress. The Sunshine Skyway, stretching 15.2 miles across lower Tampa Bay, opened to toll traffic. ♦ **1954-1960** The school desegregation decision of the U.S. Supreme Court in *Brown v. Board of Education of Topeka* had Florida ramifications. Sit-in demonstrations at segregated lunch counters occurred. In later days, often through interracial committees, segregated lunch counter policies were ended in some 20 Florida communities. ♦ **1955** The Legislature authorized a state-long turnpike. Lawmakers were deadlocked for months in a special session over reapportionment of the state Senate. ♦ **1956** Elected in 1954, LeRoy Collins was the first chief executive reelected to a successive term. Collins also was the first candidate for Governor to *win* a first-primary victory, defeating five opponents for the Democratic nomination. A worm-eaten grapefruit in a Miami Shores backyard brought first aerial spraying to combat the Mediterranean fruit fly. More than a half million acres were sprayed before the battle ended nearly a year later. ♦ **1957** The Legislature authorized statewide educational television. Funds were appropriated for the University of South Florida and for expansion of the network of community colleges. ♦ **1958** The free world's first earth satellite, Explorer I, was sent

aloft from Cape Canaveral. ♦ **1960** The federal census ranked Florida 10th in the nation. Population 4,951,560 ♦ **1961** On May 5, astronaut Alan Shepard, climbed into space from Cape Canaveral. President Kennedy announced that the United States would undertake to fly men to the moon and back during the decade of the 60s, and the National Aeronautics and Space Administration selected Florida for its Spaceport, acquiring 87,763 acres by purchase. The state granted use rights to an additional 53,553 acres. The flight of Cubans from their homeland brought upwards of 50,000 into Florida. ♦ **1962** Space Age ramifications, spreading out from Cape Canaveral's launching base, influenced the state in many ways; higher education and industry being among the most important of these. Florida was the build-up area for the nation's armed forces during a crisis with Russia over missile bases and offensive weapons in Cuba. The first black students were admitted to undergraduate classes at the University of Florida and Florida State University. The Mediterranean fruit fly returned to Dade County. A quarantine was quickly established and spraying commenced, to be continued for a year. ♦ **1963-1964** In May 1963, blacks demonstrated against discrimination in Daytona and Tallahassee. St. Augustine became the center of disturbances in 1964, with wide coverage by media. ♦ **1963** The State Constitution was amended to authorize the sale of state bonds to construct buildings at universities, colleges, and vocational schools. Voters also approved the issuance of bonds to purchase land for conservation purposes. The election of Governor and Cabinet was shifted to off-year from Presidential selection. Cape Canaveral was renamed Cape Kennedy after President John F. Kennedy's assassination (reverted to original historical name in 1973). ♦ **1964** The first classes were held at Florida Atlantic University, Boca Raton. The University of West Florida was the name given to the institution being established at Pensacola. ♦ **1965** The Board of Regents took over policymaking for the state's institutions of higher learning from the Board of Control. ♦ **1966** The first Republican since 1872, Claude R. Kirk, Jr., was elected Governor. Quarterback Steve Spurrier, of the University of Florida, won the Heisman Trophy. ♦ **1967** Repeated efforts by the Legislature to devise an acceptable plan of apportionment ended when a three-judge federal court drew the boundaries of Senate and House districts and ordered new elections. ♦ **1968** The Legislature submitted and voters ratified three amendments which combined to give the state an almost new Constitution. Republicans held their convention at Miami Beach, the first national gathering of a major political party ever convened in Florida. The first Republican, Edward J. Gurney, ever elected by popular ballot was sent to the U.S. Senate. ♦ **1969** With the office reestablished by the revised Constitution, the first Lieutenant Governor (Ray C. Osborne) since 1889 was appointed. On July 16, at 9:32 a.m., Apollo II, with Astronauts Neil Armstrong, Edwin Aldrin, and Michael Collins, lifted off Pad A at Cape Kennedy on the journey to the moon. Four days later, at 4:15 p.m. (EDT) on July 20, as Armstrong stepped onto the surface of the moon, he advised the Earth - "The Eagle has landed."

1970-1989

♦ **1970** The first Legislature to meet in annual session under the new Constitution enacted a significant package of conservation laws that included

protection of alligators, stiffer penalties for air and water pollution, and reduced use of persistent pesticides. Population 6,789,443 ♦ **1971** The Legislature submitted, and the voters ratified, an amendment to the State Constitution permitting the levy of a tax on the income of corporations. Two successful moon landings by Apollo spacecraft blasted off from Cape Kennedy. ♦ **1972** The voters ratified a constitutional amendment reorganizing the sixteen kinds of trial courts into a uniform state system. The new Judicial Article eliminated all Justice of the Peace courts. All judges were to be elected without party label. Democratic and Republican National Conventions met at Miami Beach. ♦ **1973** After seven and a half years and nearly 261,000 refugees, the "freedom flights" from Cuba came to an end on April 7. The state commenced defining areas of critical concern to the well-being of the public, first being the 858,000 acres of the Big Cypress in southwest Florida brought under control by purchase or regulation. ♦ **1974** Reubin O'D. Askew became the first Governor to be elected to successive four-year terms. The Legislature enacted legislation for collective bargaining by public employees, and created an ethics commission to oversee public officers and employees. ♦ **1975** Governor Askew appointed Joseph W. Hatchett to the Supreme Court, the first black Justice in the court's history. ♦ **1976** Former Georgia Governor Jimmy Carter topped Alabama Governor George C. Wallace and 10 other Democrats in Florida's March Presidential Preference Primary. In the same primary, Florida Republicans preferred President Gerald R. Ford over former California Governor Ronald Reagan. ♦ **1977** January 20 saw snow as far south as Cutler Ridge in Dade County. A numbing wind brought death, power failure, agricultural ruin, and hundreds of traffic accidents around Florida. U.S. Corps of Engineers recommended against resumption of construction on Cross Florida Barge Canal. Completion of the new Capitol building. ♦ **1978** Jesse J. McCrary, Jr., the second black to serve as Secretary of State and as a member of the Cabinet, was appointed Secretary of State by Governor Reubin O'D. Askew on July 19. First meeting of the Legislature in the new Capitol building. Florida A&M University defeated the University of Massachusetts to become the first NCAA Division I-AA National football champions. ♦ **1980** The "Mariel Boatlift" of myriad small boats risked the Straits of Florida to bring 120,000 Cubans to Key West. Some 30,000 Haitian and 15,000 Nicaraguan refugees added to the resettlement problems of federal, state, and local authorities. Population 9,746,342 ♦ **1981** The Space Shuttle Columbia rose from the Kennedy Space Center on April 12, the dawn of a new age in spaceflight. Successfully completing its series of experiments aloft, Astronauts John Young and Bob Crippen brought the Columbia to a landing at Edwards Air Force Base, California. On October 1, Florida's Walt Disney World observed its tenth anniversary. During the decade, the central Florida theme park attracted more than 125 million visitors and became the world's biggest privately owned tourist attraction. ♦ **1982** The Legislature established single-member districts for the House and Senate. Mrs. Carrie P. Meek of Miami was nominated without opposition to be the first black State Senator since 1887 and the first black woman Senator ever. Roberto Casas, of Hialeah, became the first Cuban American elected to the Florida House of Representatives. ♦ **1983** A devastating Christmas freeze ruined groves in central Florida with damage to fruit and trees totaling more than \$1 billion. The University of Miami defeated the University of Nebraska to become the National football

champions. ♦ **1984-1986** Betty Castor, Tampa, became the first woman elected to serve as President Pro Tempore of the Senate. ♦ **1985** Nature was unkind to Florida. Citrus and vegetables were frozen in all but one of the 67 counties. A total of 8,949 forest fires charred a record 345,643 acres. On May 12 fires destroyed 200 structures statewide including 130 homes at Palm Coast in Flagler County. Three hurricanes brushed the seacoasts. Disaster stunned the owners of citrus groves and nurseries, with more than 10 million trees uprooted and burned to eradicate citrus canker. Rosemary Barkett became the first woman Florida Supreme Court Justice on October 14th. ♦ **1986** The space shuttle Challenger exploded upon take-off from Cape Canaveral on January 28, killing six astronauts and its citizen-passenger, Christa McAuliffe, an elementary school teacher from Concord, New Hampshire. Quarterback Vinny Testaverde, of the University of Miami, won the Heisman Trophy. ♦ **1987** The University of Miami defeated the University of Oklahoma to become the National football champions. ♦ **1988** The space shuttle Discovery catapulted five astronauts aloft from Cape Canaveral on September 29. It was 32 months after the Challenger catastrophe suspended American manned space flight. Also in September, a Winter Springs resident, Sheelah Ryan, won the Florida Lottery's \$55.1 million jackpot, the largest prize awarded in a North American lottery to that time. Arnett E. Girardeau, from Jacksonville, became the first African American elected President Pro Tempore of the Florida Senate. ♦ **1989** Death robbed the country of an outstanding Floridian. U.S. Representative Claude Denson Pepper, a self-described Alabama plowboy who became a tireless champion of the poor and the elderly, died May 30. In his place was elected Florida's first Cuban-born woman, Ileana Ros-Lehtinen. The University of Miami defeated the University of Alabama to become the National football champions.

1990-1996

1990 The history of the community, *Miami U.S.A.*, by Helen Muir reported that streams of refugees had poured into Miami since Cubans arrived: Nicaraguans, Colombians, Jamaicans, Salvadorans, Guatemalans, Venezuelans, Peruvians, Ethiopians, Cambodians, Lebanese, and Ukrainians, "to name a few." Germans, Japanese, Mexicans, Chinese, and citizens of the Arab countries joined the march to south Florida. Gwen Margolis, North Miami Beach, was elected as the first woman President of the Florida Senate. Federal census ranked Florida fourth in the nation with a population of 13,003,362. ♦ **1991** The University of Miami defeated the University of Nebraska to become the National football champions. ♦ **1992** Homestead and adjacent south Florida was devastated on August 24 by the costliest natural disaster in American history, with Hurricane Andrew wreaking damage demanding billions in aid. The first elections since Florida gained four additional seats in the U.S. House of Representatives saw Cuban Americans and African Americans seated. Lincoln Diaz-Balart joined Ileana Ros-Lehtinen. Among the African Americans elected to Congress were Carrie Meek of Miami and Corrine Brown of Jacksonville. After the November general election, when the Legislature met to organize as provided in the Constitution, there were 20 Democrats and 20 Republicans in the 40-member Senate and each had its President-Designate. After several ballots, it

was obvious that the Senate was deadlocked on the election of the President for a two-year term. After several days of negotiation, a solution was worked out which provided for splitting the term into two one-year terms with Ander Crenshaw, Jacksonville, the Republican President-Designate in command the first year and Pat Thomas, Quincy, the Democratic President-Designate taking over for the second year. Quarterback Gino Torretta, of the University of Miami, won the Heisman Trophy. ♦ **1993** Janet Reno, for 15 years State Attorney for Dade County, was named Attorney General of the United States by President Clinton; the first woman to so serve in U.S. history. The Florida State University defeated the University of Nebraska in the Orange Bowl to become the National football champions, and quarterback Charlie Ward won the Heisman Trophy. ♦ **1994** In July, tropical storm Alberto caused the worst flooding in 65 years and did at least \$40 million in damage to crops, livestock, and equipment in counties west of the Apalachicola River. In August, tropical storm Beryl flooded much of panhandle Florida again, and in November, tropical storm Gordon killed eight in Florida and did \$336 million in damage to south Florida winter crops. Connie Mack became the first Republican U.S. Senator from Florida to win reelection. The first Republican majority elected to the State Senate in this century resulted in the election of Jim Scott, Ft. Lauderdale, as President of the Senate for a two-year term. ♦ **1995** Florida celebrated its Sesquicentennial. ♦ **1996** Toni Jennings, of Orlando, became the first Republican woman elected President of the Florida Senate. Roberto Casas, of Hialeah, became the first Cuban American elected President Pro Tempore of the Senate. The University of Florida defeated The Florida State University in the Sugar Bowl to become the National football champions, and quarterback Danny Wuerffel won the Heisman Trophy.

Selected items used with permission from *The Florida Handbook*, compiled by Allen Morris and Joan Perry Morris.

Compiled by the Office of the Secretary of the Senate.

About This Handbook

This handbook is distributed free of charge to Capitol visitors and other interested Floridians to enhance their knowledge and understanding of Florida's government, and particularly, the Florida Senate.

Included in the handbook is a photographic tour of the Senate, showing the Senate at work. The front cover, courtesy of Donn Dughi (House Communications Office), captures the tower of the new Capitol rising above the cupola of the Historic Capitol. The back cover features the Seal of the Florida Senate.

The Florida Senate handbook is published by the Secretary of the Senate. While many individuals of the Secretary's staff contributed in myriad ways to publishing this handbook, special acknowledgment is made to Jhonnie Gillispie for compiling and editing the content, to Paulette Lowry for photographs, and to Shirley Joyce for the computer entry of graphics and text. A special thanks is also extended to Pam Stevens and Jim Higdon with the Legislative Data Center.

Florida Legislature's home page, *Online Sunshine*
<http://www.leg.state.fl.us/>