

FLORIDA SENATE HANDBOOK 1998-2000



THE FACES OF
FLORIDA'S FUTURE



MESSAGE FROM THE PRESIDENT



TONI JENNINGS

President of the Senate

Welcome to the Florida Senate — an institution with a deep tradition of debating issues and building consensus for the benefit of all Floridians.

The Florida Senate and senators who make up this legislative body are here to serve all Floridians. Legislation passed in the Senate affects every citizen — making it important for all Floridians to take an active role in government to ensure their voices are heard.

During the 1999 and 2000 sessions, the Florida Senate will focus its efforts on ensuring children are ready to learn when they enter school and that Florida's schools and teachers are prepared to lead our children. We will also work to improve government services, drive down illegal drug use and protect our natural resources.

The senators you read about in this book are part of a 40-member team of leaders working to shape the future. We will help lead Florida into the next century. While we are eager to get to work serving the people of Florida, it is important that citizens stay in touch with us. Let us hear from you. We welcome your ideas and thoughts.

Together, we can make a better Florida!

A handwritten signature in black ink that reads "Toni".

About The Cover: The Faces of Florida's Future is a copy of the visual aid President Jennings used in her opening day speech. The presentation focused on education as the key to our children's future success. Faces in this pictorial are the children and grandchildren of Florida state senators. These children, just like all of Florida's children, are the future of Florida. Special gratitude is extended to Matthew Voyer, of the Publishing Division of the Office of Legislative Information Technology Services, for the design of the cover.

THE FLORIDA SENATE

When the first Senate was convened on January 7, 1839 — six years before Florida became a state — no business could be transacted because only seven of the sixteen Senators were present. There was no quorum of Senators for three of the first four days, and it was not until the fifth day of the first session that Territorial Governor Richard Keith Call addressed the Senate and the House of Representatives in joint session.

Since the beginning days, the Senate has evolved into a highly organized, smoothly functioning legislative body that meets annually to conduct the people's business. The year-round staff conducts vital research and prepares for the legislative sessions.

“Once a Senator, always a Senator” is a catchy phrase of good fellowship that conveys something of the philosophy of the Senate.



President Jennings addresses the Senate on the opening day of the 1999 Regular Session.

The Florida Senate today has 40 members, each elected from a single district and each representing more than 323,448 Florida citizens. Each Senator is elected for a four-year staggered term. He or she may be elected for more than one term, but may not serve for more than 8 consecutive years (see Article VI, section 4, State Constitution). The Constitution of the State of Florida specifies that Senators must be at least twenty-one years of age, must be registered voters, must be residents of the district from which they are elected, and must have resided in Florida for two years prior to their election.

While members of the other branches of government work full time in public service, the Legislature maintains its identity as the “citizen” branch. Almost all of the Senators are occupied in a business or profession when they are not carrying out their legislative duties.

The 1998-2000 Senate membership includes 33 men and 7 women. There are 25 Republicans and 15 Democrats whose professions or occupations include law, medicine, banking, business, agriculture, and industry. The average Senator is about 51 years old, is married, and has children. Thirty-seven of the Senators have college degrees and 37 have held other public offices before they were elected to the Senate. Twenty Senators served in the House of Representatives prior to their election to the Senate. Others have served in local governments. The Senate is presided over by a President elected by the members of the Senate. Also elected is the President Pro Tempore. The President for the 1998-2000 term is Senator Toni Jennings from Orlando, an 18-year Senate veteran. The President Pro Tempore is Senator William G. “Doc” Myers from Hobe Sound, who has served in the Senate since 1982.

Additional information on these officers and the other members of the Senate is contained on the following pages of this handbook. The handbook also further outlines and describes the Senate, its operations, and its relationship to the House of Representatives and the other two branches of Florida government.

Elected Officers of the Senate



Toni Jennings
Republican, District 9
President

Construction, Realtor **born** May 17, 1949 in Orlando **education** Wesleyan College, B.A., 1971; Rollins College, 1972 **legislative service** House of Representatives, 1976-1980; elected to the Senate in 1980, reelected subsequently; Senate Republican Leader, 1984, 1986-1988; Republican Leader Pro Tempore, 1982-1983, 1985-1986; Orange County Legislative Delegation Chairman: 1980-1982, 1985-1986, 1991-1992; Seminole County Legislative Delegation: Chairman, 1990-1991, 1991-1992; President,

1996-1998, 1998-2000 **historical** Jack Jennings, father, Orange County School Board Chairman. Charles H. Jennings, great-grandfather, was a member of Virginia Legislature. General Edward Martin, great-uncle, Governor of Pennsylvania **religious affiliation** Episcopal **recreation** bicycling **addresses** (district) 1032 Wilfred Drive, Orlando 32803-2571 (Tallahassee) Suite 409, The Capitol 404 South Monroe Street, 32399-1100 **telephones** (district) 407/898-1861 (Tallahassee) 850/487-5229.

<http://www.leg.state.fl.us/senate/members/s09>



William G. "Doc" Myers
Republican, District 27
President Pro Tempore

Physician **born** September 28, 1930 in Kittanning, Pennsylvania. Moved to Florida in 1961 **education** University of Pittsburgh: B.S., 1952, M.D., 1956; internship: Southside Hospital, Pittsburgh, 1957; internal medicine residency, 1958 **wife** Carol Anne Edgar of Washington, Pennsylvania **children** Jacqueline Jolane Means, William George Jr., Bradley Stephen, Brian Jeffry, Barry Douglas, and Jennifer Sue **legislative service** House of Representatives, 1978-1982; elected to the Senate in 1982, reelected subsequently; Republican Whip, 1984-1986; Republican Leader Pro Tempore, 1986-1988; Republican Leader, 1988-1990; Majority Leader, 1994-1996; President Pro Tempore, 1998-2000 **religious affiliation** Methodist **recreation** tennis, racquetball, and squash **addresses** (district) 50 Kindred Street, Suite 301, Stuart 34994-3058 (Tallahassee) 402 Senate Office Building 404 South Monroe Street, 32399-1100 **telephones** (district) 561/283-3133 (Tallahassee) 850/487-5088.

<http://www.leg.state.fl.us/senate/members/s27>

MEMBERS OF THE SENATE



Charles H. "Charlie" Bronson, Jr.
Republican, District 18

Rancher **born** September 15, 1949 in Kissimmee **education** University of Georgia, B.S.A., 1973 **wife** Regina Bolden of Macon, Georgia **children** Michelle and Melanie **legislative service** elected to the Senate in 1994, reelected subsequently **religious affiliation** Methodist **recreation** hunting and fishing **addresses** (district) 1813 South Patrick Drive, Indian Harbour Beach 32937; 1322 10th Street, St. Cloud 34769 (Tallahassee) 322 Senate Office Building 404 South Monroe Street, 32399-1100 **telephones** (district) 407/726-2880 or

407/846-5275, 888/447-1877 (Tallahassee) 850/487-5056.

<http://www.leg.state.fl.us/senate/members/s18>



Locke Burt
Republican, District 16

Insurance Executive; President, Ormond Re Group, Inc. **born** February 19, 1948 in Des Moines, Iowa. Moved to Florida in 1959 **education** Northwestern University, B.S.B.A., 1969; M.B.A., 1970; Loyola University, J.D., 1974 **wife** Ann E. Snyder of Milwaukee, Wisconsin **children** Melissa and Thomas **legislative service** elected to the Senate, July 30, 1991; reelected subsequently; Senate Majority Whip, 1996; Republican Leader, 1996-1998 **religious affiliation** Episcopal **recreation** sailing and golf **addresses** (district) 140 S. Atlantic

Avenue, Suite 201, Ormond Beach 32176; 838 E. New York Avenue, Suite B, DeLand 32724 (Tallahassee) 410 Senate Office Building 404 South Monroe Street, 32399-1100 **telephones** (district) 904/673-7299 or 904/738-9002 (Tallahassee) 850/487-5033.

<http://www.leg.state.fl.us/senate/members/s16>



Ginny Brown-Waite
Republican, District 10

Legislator **born** October 5, 1943 in Albany, New York. Moved to Florida in 1986 **education** State University of New York, B.S., 1976; Russell Sage College, M.S., 1984; Cornell University, Certificate Program, 1980 **husband** Harvey Waite of Albany, New York **children** Jeannine Bradford, Danene Mitchell, and Lorie Sue Busiere **legislative service** elected to the Senate in 1992; reelected subsequently **religious affiliation** Catholic **recreation** reading and computer work **addresses** (district) Hernando Government Complex, 20

North Main Street, Room 200, Brooksville 34601 (Tallahassee) 314 Senate Office Building 404 South Monroe Street, 32399-1100 **telephones** (district) 352/544-2344 (Tallahassee) 850/487-5040.

<http://www.leg.state.fl.us/senate/members/s10>



Walter G. "Skip" Campbell, Jr.
Democrat, District 33

Attorney **born** November 12, 1948 in Rockaway Beach, New York. Moved to Florida in 1961 **education** St. John Vianney Seminary, A.A., 1968; University of Florida: B.A., 1970; J.D., 1973 **wife** Lynn Satin of Miami Beach **children** Christina and Daniel **legislative service** elected to the Senate in 1996; Minority Whip, 1998 **religious affiliation** Catholic **recreation** golf and flying **addresses** (district) 10094 McNab Road, Tamarac 33321 (Tallahassee) 308 Senate Office Building 404 South Monroe Street, 32399-1100 **telephones**

(district) 954/346-2813 (Tallahassee) 850/487-5094.

<http://www.leg.state.fl.us/senate/members/s33>



Lisa Carlton
Republican, District 24

Co-owner/manager cattle and citrus business **born** May 7, 1964 in Sarasota **education** Stetson University, B.A., Sociology, 1986; Mercer University School of Law, J.D., 1989 **husband** Robert (Rob) Robinson of Lake Wales **children** Carlton Elaine and Mabry Robert **legislative service** House of Representatives, 1994-1998; Sarasota County Legislative Delegation Chairman, 1994-1998; elected to the Senate in 1998 **historical** Mabry Carlton, Jr., father, Sarasota County Commissioner, 1980-1989; Mabry Carlton, Sr., grandfather, Hardee County Tax Assessor for 18 years; Doyle E. Carlton, great-uncle, Florida Senator: 1917, 1919, Florida Governor: 1929-1933; Doyle E. Carlton, Jr., uncle, Florida Senator: 1953, 1955, 1957, 1959, 1965, 1966; Fran Carlton, cousin, Florida Representative: 1976-1988 **religious affiliation** Baptist **recreation** tennis **addresses** (district) 2127 S. Tamiami Trail, Osprey 34229-9695 (Tallahassee) 310 Senate Office Building 404 South Monroe Street, 32399-1100 **telephones** (district) 941/486-2032 (Tallahassee) 850/487-5081.

<http://www.leg.state.fl.us/senate/members/s24>



Roberto Casas
Republican, District 39

Real Estate Broker, Investor **born** April 25, 1931 in Havana, Cuba. Moved to Florida in 1962 **education** Havana Business University, B.A., 1954 **wife** Violeta Colominas of Matanzas, Cuba **legislative service** House of Representatives, 1982-1988; elected to the Senate in 1988, reelected subsequently; President Pro Tempore, 1996-1998 **religious affiliation** Catholic **recreation** hunting and fishing **addresses** (district) 4821 W. 4th Avenue, Hialeah 33012 (Tallahassee) 420 Senate Office Building 404 South Monroe Street, 32399-1100 **telephones** (district) 305/827-4040 (Tallahassee) 850/487-5106.

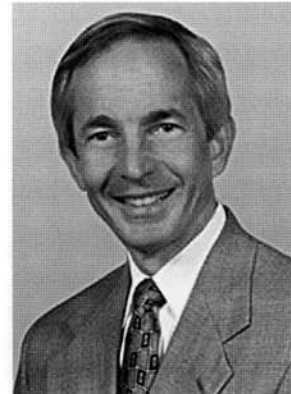
<http://www.leg.state.fl.us/senate/members/s39>



W.D. Childers
Republican, District 1
Dean of the Senate

Businessman **born** November 25, 1933 in Okaloosa County **education** Florida State University, B.S., 1955 **wife** Ruth A. Johnson of Wakeeney, Kansas **children** Gail, Jeanna, Karen and Marvel; grandchildren: Mandy, Jamie, Max, Hailey, Bradley, Brandon, and Hannah; great grandchild: Sidney **legislative service** elected to the Senate in 1970, reelected subsequently; President 1980-1982; Dean of the Senate **religious affiliation** Baptist **recreation** fishing, hunting, and camping **addresses** (district) 2889 Michigan Avenue, Pensacola 32526 (Tallahassee) 404 Senate Office Building 404 South Monroe Street, 32399-1100 **telephones** (district) 850/944-3900 (Tallahassee) 850/487-5000.

<http://www.leg.state.fl.us/senate/members/s01>



Charles W. "Charlie" Clary III
Republican, District 7

Architect **born** June 24, 1950 in Crestview **education** Auburn University: B.A., Architecture, Environmental Design, 1977 **wife** Beth Graham of Ft. Walton Beach **children** Joanna and Laura **legislative service** elected to the Senate in 1996 **military service** U.S. Navy: Submarine service, 4 years active and 2 years inactive **religious affiliation** Baptist **recreation** fishing, pen and ink sketching, and photography **addresses** (district) 1241 Airport Road, Suite A, Destin 32541 (Tallahassee) 205 Senate Office Building 404 South Monroe Street, 32399-1100 **telephones** (district) 850/833-9159 (Tallahassee) 850/487-5009.

<http://www.leg.state.fl.us/senate/members/s07>



Anna P. Cowin
Republican, District 11

Educator **born** May 23, 1946 in Brooklyn, New York. Moved to Florida in 1980 **education** College of New Rochelle, New York, B.A., 1968; Fordham University, New York, M.S. **husband** Dr. John A. Cowin of Leesburg **children** David, Lynda, and Scott **legislative service** elected to the Senate in 1996 **religious affiliation** Catholic **addresses** (district) 716 West Magnolia Street, Leesburg 34748; P.O. Box 490238, Leesburg 34749 (Tallahassee) 305 Senate Office Building 404 South Monroe Street, 32399-1100 **telephones** (district) 352/315-9335, 352/360-6750 (Tallahassee) 850/487-5014.

<http://www.leg.state.fl.us/senate/members/s11>



M. Mandy Dawson-White
Democrat, District 30

Consultant/Legislator **born** July 18 in Fort Lauderdale **education** Florida A & M University, B.S., Social Work, 1980 **husband** Johnny L. White **children** Shatereas, Colongie, and Ashley **legislative service** House of Representatives, 1992-1998; elected to the Senate in 1998 **religious affiliation** Baptist **recreation** travel, reading, swimming, writing short stories for children **addresses** (district) 33 N.E. 2nd Street, Suite 209, Ft. Lauderdale 33301-1033 (Tallahassee) 224 Senate Office Building 404 South Monroe Street, 32399-1100 **telephones** (district) 954/467-4317, 877/632-9766 (Tallahassee) 850/487-5112.

<http://www.leg.state.fl.us/senate/members/s30>



Mario Diaz-Balart
Republican, District 37

Director: Citigate Gordon Diaz-Balart; Marketing and Public Affairs **born** September 25, 1961 in Fort Lauderdale **education** University of South Florida **legislative service** House of Representatives, 1988-1992; elected to the Senate, 1992; reelected subsequently **historical** Rafael Diaz-Balart, grandfather, elected to Cuban House of Representatives in 1936. Juan Caballero, uncle, elected to Cuban House of Representatives in 1954. Rafael L. Diaz-Balart, father, Majority Leader of Cuban House of Representatives 1954-1958 and elected to Cuban Senate in 1958. Lincoln Diaz-Balart, brother, served in the Florida House of Representatives from 1986-1989 and served in the Florida Senate from 1989-1992; elected to the U.S. Congress, 1992, Congressional District 21 **religious affiliation** Catholic **recreation** reading, biking, and diving **addresses** (district) 8890 Coral Way, Suite 215, Miami 33165 (Tallahassee) 202 Senate Office Building 404 South Monroe Street, 32399-1100 **telephones** (district) 305/227-7690 (Tallahassee) 850/487-5130.

<http://www.leg.state.fl.us/senate/members/s37>



John H. "Buddy" Dyer, Jr.
Democrat, District 14
Democratic Leader

Attorney **born** August 7, 1958 in Orlando **education** Brown University, Sc.B. Civil Engineering, 1980; University of Florida College of Law, J.D., 1987 **wife** Karen Caudill of Palm Beach Gardens **children** John Hugh III (Trey) and Andrew (Drew) Warren **legislative service** elected to the Senate in 1992; reelected subsequently; Democratic Leader, 1998 **religious affiliation** Presbyterian **recreation** fishing, reading, and golf **addresses** (district) P.O. Box 1031, Orlando 32802-1031 (Tallahassee) 200 Senate Office Building 404 South Monroe Street, 32399-1100 **telephones** (district) 407/245-0882 (Tallahassee) 850/487-5190.

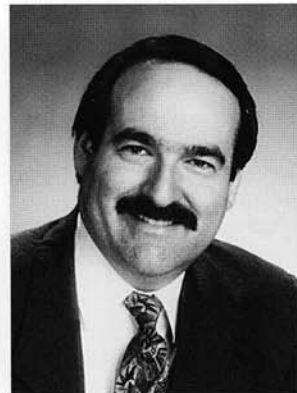
<http://www.leg.state.fl.us/senate/members/s14>



Howard C. Forman
Democrat, District 32
Democratic Whip

Market Consultant **born** January 6, 1946 in Pittsburgh, Pennsylvania. Moved to Florida in 1955 **education** Miami-Dade Community College; University of Miami; New York Institute of Finance **wife** Susan Schwartzman of Charleston, South Carolina **children** Iris and Rosette Forman; stepchildren: Todd and Michelle Stone **legislative service** elected to the Senate in 1988, reelected subsequently; Chairman, Broward County Delegation, 1990 **religious affiliation** Jewish **recreation** reading, bicycling, and swimming **addresses** (district) 10400 Griffin Road, Suite 104, Cooper City 33328 (Tallahassee) 208 Senate Office Building 404 South Monroe Street, 32399-1100 **telephones** (district) 954/680-5632 (Tallahassee) 850/487-5103.

<http://www.leg.state.fl.us/senate/members/s32>



Steven A. Geller
Democrat, District 29

Attorney **born** November 4, 1958 in Bronx, New York. Moved to Florida in 1965 **education** Florida State University: B.A., 1979; J.D., 1982 **wife** Laurel Leffler of West Palm Beach **child** Marc Isaac **legislative service** House of Representatives, 1988-1998; elected to the Senate March 17, 1998 **religious affiliation** Jewish **addresses** (district) 400 South Federal Highway, Suite 204, Hallandale 33009; 481 W. Hickpoochee Avenue, P.O. Box 580, LaBelle 33975 (Tallahassee) 318 Senate Office Building 404 South Monroe Street, 32399-1100 **telephones** (district) 954/893-5089 (Tallahassee) 850/487-5097.

<http://www.leg.state.fl.us/senate/members/s29>



John A. Grant, Jr.
Republican, District 13

Attorney **born** July 12, 1943 in Tampa **education** University of Florida, 1961-1962; University of South Florida, B.A., 1964; Florida State University, Master of Science and Government, 1965; Stetson University, J.D., 1968; Trinity College of Florida, Honorary Doctorate of Humane Letters (DHL), 1993 **wife** Beverley Code of Tampa **children** John A. III, Jeanette E. Odom, and James William; grandchildren: Hannah Elizabeth Odom and Jimmy Lane Odom III **legislative service** House of Representatives, 1980-1986; elected to the Senate in 1986, reelected subsequently **religious affiliation** Baptist **recreation** tennis, travel, and flying **addresses** (district) 610 West Waters Avenue, Suite A, Tampa 33604 (Tallahassee) 414 Senate Office Building 404 South Monroe Street, 32399-1100 **telephones** (district) 813/975-6658, 800/795-5597 (Tallahassee) 850/487-5068.

<http://www.leg.state.fl.us/senate/members/s13>



Alberto "Al" Gutman
Republican, District 34

Businessman **born** January 4, 1959 in Havana, Cuba. Moved to Florida in 1965 **education** Miami-Dade Community College, A.A., 1980; University of Miami, B.B.A., 1982 **wife** Marci Rabinowitz of New York, New York **children** Lauren and Ilana **legislative service** House of Representatives, 1984-1992; elected to the Senate in 1992; reelected subsequently; National Conference of State Legislatures **religious affiliation** Jewish; Temple Beth Shmuel, Beth Chaim Yosef Congregation, Temple Beth David **recreation** fishing and reading **addresses** (district) 1800 S.W. 27th Avenue, Suite 300, Miami 33145 (Tallahassee) 222 Senate Office Building 404 South Monroe Street, 32399-1100 **telephones** (district) 305/442-6990 (Tallahassee) 850/487-5109.

<http://www.leg.state.fl.us/senate/members/s34>



James T. "Jim" Hargrett, Jr.
Democrat, District 21

Real Estate, Retail **born** July 31, 1942 in Tampa
education Morehouse, B.A., 1964; Atlanta
University, M.B.A., 1965 **wife** Berlyn Chatard of
New Orleans, Louisiana **children** Crystal and
James III **legislative service** House of
Representatives, 1982-1992; elected to the Senate
in 1992, reelected subsequently **military service**
U.S. Army Reserve 1965-1971 **religious affiliation**
Methodist **recreation** fishing **addresses** (district)
P.O. Box 11025, Tampa 33680; 2107 E. Osborne
Avenue, Tampa 33610 (Tallahassee) 320 Senate

Office Building 404 South Monroe Street, 32399-1100 **telephones** (district)
813/272-2990 (Tallahassee) 850/487-5059.

<http://www.leg.state.fl.us/senate/members/s21>



Betty S. Holzendorf
Democrat, District 2
Democratic Leader Pro Tempore

Administrator **born** April 5, 1939 in Jacksonville
education Edward Waters College, B.S., 1965;
Atlanta University, M.A., Bio-Chemistry, 1971;
University of North Florida, M.Ed. Adm., 1973
husband King Holzendorf, Jr. of Jacksonville
children Kim V. Lockley, King L. III, Kevin J. and
Kessler L.; grandchildren: Kevin G. Holzendorf II,
Travis Lockley, and Deidra Holzendorf **legislative**
service House of Representatives, 1988-1992;

elected to the Senate in 1992, reelected subsequently; Democratic Leader Pro
Tempore, 1998 **religious affiliation** African Methodist Episcopal (A.M.E.)
recreation reading and collecting pennies **addresses** (district) 816 North Ocean
St., Jacksonville 32202-3083 (Tallahassee) 213 Senate Office Building 404
South Monroe Street, 32399-1100 **telephones** (district) 904/359-6880
(Tallahassee) 850/487-5024.

<http://www.leg.state.fl.us/senate/members/s02>



Jim Horne
Republican, District 6

Certified Public Accountant **born** January 20, 1959
in Orange Park **education** Florida State University,
B.S., Accounting, 1980 (graduated with business
degree in 3 years) **wife** Lori McArdle of Niagara
Falls, New York **children** Ashley, Laura, John
David, and Katherine **legislative service** elected to
the Senate in 1994; reelected subsequently
religious affiliation Baptist **recreation** running,
golf **addresses** (district) 2301 Park Avenue, Suite
403, Orange Park 32073 (Tallahassee) 214 Senate
Office Building 404 South Monroe Street, 32399-

1100 **telephones** (district) 904/573-4900 (Tallahassee) 850/487-5027.

<http://www.leg.state.fl.us/senate/members/s06>



Daryl L. Jones
Democrat, District 40

Attorney of Counsel: Adorno & Zeder, PA **born**
May 31, 1955 in Jackson, Mississippi. Moved to
Florida in 1981 **education** Valedictorian, Lanier
High School, Jackson, Mississippi, 1973; United
States Air Force Academy: B.S., Math, Honor
graduate, 1977; University of Miami (Florida)
School of Law: J.D., cum laude, 1987 **wife**
Myoushi Carter of Birmingham, Alabama **children**
Derek L., Durel L., and Michele E. **legislative**
service House of Representatives, 1990-1992;
elected to the Senate in 1992, reelected

subsequently; Democratic President Designate, 1995-1996; Dade County
Legislative Delegation, Vice Chairman, 1993 **military service** United States
Air Force Reserve (Major): 482nd FW Mission Support Squadron Commander,
1997-present; F-16 Falcon Pilot, Homestead Air Force Base, Florida, 1989-
1991; Puerto Rico Air National Guard, (Captain): A-7D Corsair II Pilot, Puerto
Rico Air National Guard, 1988-1989; United States Air Force (Captain): F-4
Phantom II Instructor Pilot, Homestead Air Force Base, Florida, 1981-1984;
twice selected 31st TTS Instructor Pilot of the Quarter; F-4 Phantom II Pilot,
Clark Air Base, Philippines, 1979-1981; Cope Thunder Mission Commander,
Flight Leader **religious affiliation** Lector and member, Christ the King Catholic
Church **recreation** all sports **addresses** (district) 9200 S. Dadeland Boulevard,
Suite 208, Miami 33156 (Tallahassee) 218 Senate Office Building 404 South
Monroe Street, 32399-1100 **telephones** (district) 305/671-7240, 800/303-2988
(Tallahassee) 850/487-5127.

<http://www.leg.state.fl.us/senate/members/s40>

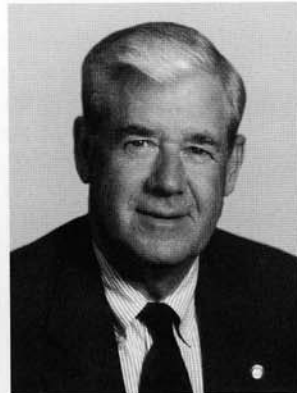


James E. "Jim" King, Jr.
Republican, District 8

Owner, Personnel Services Firms **born** October 30, 1939 in Brooklyn, New York. Moved to Florida in 1945 **education** St. Petersburg Junior College, A.A., 1959; Florida State University, B.S.B.A., 1961; M.B.A., 1962 **wife** Linda Braddock of Orange Park **children** Monta Michele and Laurie Anne **legislative service** House of Representatives, 1986-1999; House Republican Policy Committee Chairman, 1992-1994; Republican Legislature Leadership Committee and Republican Leadership Team, 1986-1994; Minority Floor Whip, 1988-

1990; Duval Delegation Chairman, 1992; Republican Reapportionment Committee, Vice Chairman; elected to the Senate March 9, 1999 **military service** U.S. Coast Guard, 1962-1968 **religious affiliation** Episcopal **recreation** scuba diving, boating, sport fishing, and gardening **addresses** (district) 9485 Regency Square Boulevard, Suite 108, Jacksonville 32225-8145 (Tallahassee) 312 Senate Office Building 404 South Monroe Street, 32399-1100 **telephones** (district) 904/727-3600 (Tallahassee) 850/487-5030.

<http://www.leg.state.fl.us/senate/members/s08>



George Grier Kirkpatrick, Jr.
Republican, District 5

Executive Director, Independent Colleges and Universities of Florida; real estate; investments **born** December 24, 1938 in Gainesville **education** Davidson College, B.S., Psychology, 1962 **wife** Monika Godzewski of Berlin, Germany **children** Catherine Grace and George Grier III **legislative service** elected to the Senate in 1980, reelected subsequently **military service** U.S. Army, 1st Lieutenant Military Police Corps, West Berlin, Germany 1962-1964 **religious affiliation** Presbyterian **recreation** fishing, golfing, enology

and origami **addresses** (district) 1103 N.W. 13th Street, Gainesville 32601 (Tallahassee) 400 Senate Office Building 404 South Monroe Street, 32399-1100 **telephones** (district) 352/377-3800 (Tallahassee) 850/487-5020.

<http://www.leg.state.fl.us/senate/members/s05>



Ron Klein
Democrat, District 28

Attorney **born** July 10, 1957 in Cleveland, Ohio. Moved to Florida in 1985 **education** Ohio State University: B.A., Political Science, 1979; Case Western Reserve University, J.D., 1982 **wife** Dori Dragin of Cleveland, Ohio **children** Brian and Lauren **legislative service** House of Representatives, 1992-1996; elected to the Senate in 1996, reelected subsequently; Minority Whip, 1998 **religious affiliation** Jewish **recreation** tennis, racquetball, water sports, and camping **addresses** (district) 3333 South Congress Avenue,

Suite 305A, Delray Beach 33445 (Tallahassee) 220 Senate Office Building 404 South Monroe Street, 32399-1100 **telephones** (district) 561/274-4777 (Tallahassee) 850/487-5091.

<http://www.leg.state.fl.us/senate/members/s28>



Patsy Ann Kurth
Democrat, District 15

Real Estate Broker **born** February 2, 1941 in Washington, Missouri. Moved to Florida in 1960 **education** Southwest Missouri State Teachers College; Brevard Community College **husband** Alan "Al" Kurth of New Jersey **children** Dawn (deceased), Wendy, Martha, and Sara **legislative service** elected to the Senate in 1990, reelected subsequently **religious affiliation** Methodist **recreation** fishing, walking, quilting, and antique collecting **addresses** (district) 2174 Harris Avenue, N.E., Suite 1B, Palm Bay 32905 (Tallahassee) 412

Senate Office Building 404 South Monroe Street, 32399-1100 **telephones** (district) 407/984-4951 (Tallahassee) 850/487-5053.

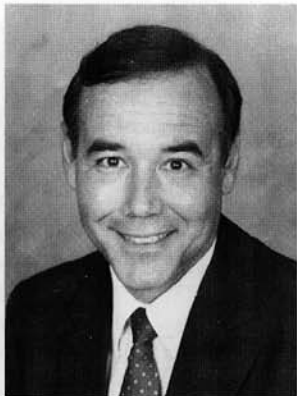
<http://www.leg.state.fl.us/senate/members/s15>



Jack Latvala
Republican, District 19
Majority (Republican) Leader

President, Direct Response Marketing of Orlando, Inc. **born** November 3, 1951 in Oxford, Mississippi. Moved to Florida in 1962 **education** Bartow High School, 1969; Stetson University, B.A., 1973 **wife** Susan Richardson of Shelbyville, Kentucky, Republican member of the Pinellas County School Board **children** Stephanie, Colin, Evan, and Christopher **legislative service** elected to the Senate in 1994; reelected subsequently; Republican Leader, 1998-2000 **religious affiliation** North Dunedin Baptist Church **recreation** fishing **addresses** (district) 35111 U.S. Highway 19, North, Suite 105, Palm Harbor 34684 (Tallahassee) 300 Senate Office Building 404 South Monroe Street, 32399-1100 **telephones** (district) 727/787-8991 (Tallahassee) 850/487-5062.

<http://www.leg.state.fl.us/senate/members/s19>



John F. Laurent
Republican, District 17

Attorney, Cattle and Citrus **born** October 4, 1946 in Bartow **education** University of Florida: B.S., 1969; J.D., 1972 **wife** Martha Espinosa of Cuba **children** John Alexander and George Frank **legislative service** House of Representatives, 1990-1998; elected to the Senate March 10, 1998 **religious affiliation** Presbyterian **recreation** boating, fishing, diving and reading **addresses** (district) 250 North Clark Avenue, Bartow 33830 (Tallahassee) 216 Senate Office Building 404 South Monroe Street, 32399-1100 **telephones**

(district) 941/519-7595 (Tallahassee) 850/487-5044.

<http://www.leg.state.fl.us/senate/members/s17>



Tom Lee
Republican, District 23

Vice President, Sabal Homes of Florida, Inc. **born** January 21, 1962 in San Antonio, Texas. Moved to Florida in 1969 **education** Hillsborough Community College, A.A., 1982; University of Tampa, B.S., Business, 1984 **wife** Amy Carey of Brandon **child** Regan Carey **legislative service** elected to the Senate in 1996 **religious affiliation** Catholic **recreation** golf, travel **addresses** (district) P.O. Box 2743, Brandon 33509; 1421 Oakfield Drive, Brandon 33511 (Tallahassee) 311 Senate Office Building 404 South Monroe Street, 32399-1100 **telephones** (district) 813/744-8683 (Tallahassee) 850/487-5072.

<http://www.leg.state.fl.us/senate/members/s23>



John M. McKay
Republican, District 26

Real Estate Broker, Businessman **born** September 23, 1948 in Winter Haven **education** Florida State University, B.S., 1972 **wife** Michelle Dodson of Dothan, AL, Telecommunication Consultant **children** Mary Patricia, Sara Jane, and Meredith **legislative service** elected to the Senate in 1990, reelected subsequently **historical** D.B. McKay, great-uncle, Mayor of Tampa for 16 years in the early 1900s. Mitchell F. McKay, grandfather, Clerk of the Criminal Court in Tampa, 1908-1910, Deputy Clerk of Circuit Court, 1924-1928 **military service** Army National Guard and U.S. Army Reserve, 1969-1975, honorable discharge **religious affiliation** Episcopal **recreation** golf and sailing **addresses** (district) 2424 Manatee Avenue, West, Suite 101, Bradenton 34205 (Tallahassee) 416 Senate Office Building 404 South Monroe Street, 32399-1100 **telephones** (district) 941/741-3099 (Tallahassee) 850/487-5078.

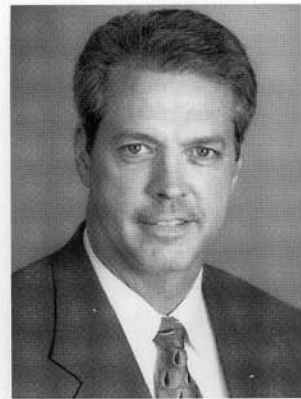
<http://www.leg.state.fl.us/senate/members/s26>



Kendrick B. Meek
Democrat, District 36

Development Representative for Wackenhut Corporation **born** September 6, 1966 in Miami **education** Florida A & M University, B.S., 1989; Co-founder of the Florida A & M University College Young Democrats, 1986; statewide president of the College Young Democrats, 1987-1988; Omega Psi Phi Fraternity, Inc.; varsity athlete; Florida Highway Patrol Academy, Law Enforcement Standards, 1989 **wife** Leslie Dixon of Brooklyn, New York **children** Lauren and Kendrick B. Jr. **legislative service** House of Representatives, 1994-1998; elected to the Senate in 1998 **historical** Carrie P. Meek, mother, Florida House of Representatives, 1979-1982; Florida Senate, 1982-1992; U.S. Congress, 1993-present **religious affiliation** Baptist **recreation** fishing, hunting, scouting **addresses** (district) 18441 N.W. 2nd Avenue, Suite 515, Miami 33169 (Tallahassee) 226 Senate Office Building 404 South Monroe Street, 32399-1100 **telephones** (district) 305/655-3671 (Tallahassee) 850/487-5116.

<http://www.leg.state.fl.us/senate/members/s36>



Richard Mitchell
Democrat, District 4

Executive Director, Comprehensive Community Services, Inc. **born** May 23, 1956 in Jasper **education** Florida State University, B.S., English and Speech Communications, 1979 **wife** Debra Rogers of Hahira, Georgia **children** Savannah, Kylie, and Jessica **legislative service** elected to the Senate in 1998 **military service** Officer, Jet Pilot, U.S. Navy; Commander, U.S. Naval Reserves **religious affiliation** Baptist **recreation** hunting, fishing, and jogging **addresses** (district) Virgie Cone Center, 406 10th Avenue NW, Jasper 32052 (Tallahassee) 212 Senate Office Building 404 South Monroe Street, 32399-1100 **telephones** (district) 904/719-2733, 888/329-6784 (Tallahassee) 850/487-5017.

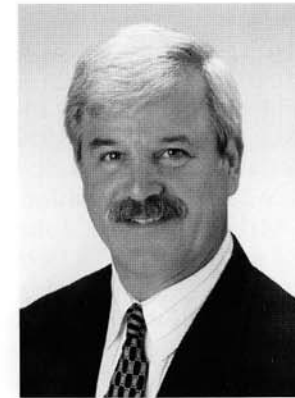
<http://www.leg.state.fl.us/senate/members/s04>



Tom Rossin
Democrat, District 35

Attorney, Banking Consultant **born** August 29, 1933 in New York, New York. Moved to Florida in 1958 **education** Columbia University, B.S., 1957; University of Miami, J.D., 1965 **wife** Joyce Thornton of Colquitt, Georgia **children** Thomas, Jr., Allen, and Michael Rossin; stepchildren: Robert Jr., Sam, Andrew, and Sandi Bouchlas **legislative service** elected to the Senate in 1994; reelected subsequently **religious affiliation** Protestant **recreation** tennis and skiing **addresses** (district) 1241 Okeechobee Road, Building A, Suite 4, West Palm Beach 33401-6953; Lee County Courthouse, 2120 Main Street, #206, Ft. Myers 33901 (Tallahassee) 210 Senate Office Building 404 South Monroe Street, 32399-1100 **telephones** (district) 561/837-5400 or 941/338-2646 (Tallahassee) 850/487-5356.

<http://www.leg.state.fl.us/senate/members/s35>



Burt L. Saunders
Republican, District 25

Attorney **born** November 7, 1948 in Hampton, Virginia. Moved to Florida in 1978 **education** University of South Florida, B.A., Physics, 1972; William and Mary Law School, J.D., 1975; University of Miami Law School, LL.M., 1979 **wife** Lillian of Whaleyville, Maryland **children** Frank, Jonathan, and Matthew **legislative service** House of Representatives, 1994-1998; elected to the Senate in 1998 **religious affiliation** Jewish **recreation** back packing, snow skiing and hiking **addresses** (district) 3301 E. Tamiami Trail, Administration Building, Suite 304, Naples 34112; 1039 S.E. 9th Place, Room 120 A & B, Cape Coral 33904 (Tallahassee) 326 Senate Office Building 404 South Monroe Street, 32399-1100 **telephones** (district) 941/417-6220 or 941/338-2777 (Tallahassee) 850/487-5124.

<http://www.leg.state.fl.us/senate/members/s25>



James A. "Jim" Scott
Republican, District 31

Attorney **born** January 14, 1942 in Pikeville, Kentucky. Moved to Florida in 1966 **education** University of Kentucky, B.A., 1963; J.D., 1965 **wife** Janice Ann Suskey of Miami **children** Frank and Stacy Ann **legislative service** elected to the Senate in 1976, reelected subsequently: Minority Floor Leader, 1978-1980 and Minority Leader, 1980-1982; President, 1994-1996 **military service** U.S. Coast Guard, 1965-1968 **religious affiliation** Presbyterian **recreation** golf and horseback riding **addresses** (district) 2000 East Oakland Park

Boulevard, Ft. Lauderdale 33306-1195 (Tallahassee) 408 Senate Office Building 404 South Monroe Street, 32399-1100 **telephones** (district) 954/566-8600 or 954/392-3710, 954/833-9231 (Tallahassee) 850/487-5100.

<http://www.leg.state.fl.us/senate/members/s31>



James A. "Jim" Sebesta
Republican, District 20

Real Estate/Broker/Developer **born** August 24, 1935 in Pontiac, Illinois. Moved to Florida in 1959 **education** Loyola University, Chicago, B.Sc.; DePaul University, M.B.A. **wife** Jean **children** Jim, Anne Comber, Steve, Mike, Bob and John **legislative service** elected to the Senate in 1998 **religious affiliation** Catholic **recreation** family time, fishing and golf **addresses** (district) Oaks at Gandy, 9887 4th Street North, Suite 319, St. Petersburg 33702 (Tallahassee) Room 324 Senate Office Building 404 South Monroe Street, 32399-

1100 **telephones** (district) 727/563-0377, 727/217-7088 (Tallahassee) 850/487-5075.

<http://www.leg.state.fl.us/senate/members/s20>



Ronald A. Silver
Democrat, District 38

Attorney **born** June 25, 1943 in Cambridge, Massachusetts. Moved to Florida in 1958 **education** University of Miami, B.A., 1965; University of Miami, School of Law, J.D., 1968 **wife** Irene Huth of Savannah, Georgia **children** Elayne and Joel **legislative service** House of Representatives, 1978-1992: Chairman, Dade County Legislative Delegation, 1982-1983; House Majority Whip, 1984-1986; House Majority Leader, 1986-1988; House Floor Leader for Governor, 1990-1992. elected to the Senate in

1992; reelected subsequently: Majority Leader, 1994; Chairman, Dade County Legislative Delegation, 1995-1996 **religious affiliation** Jewish **recreation** softball, tennis and basketball **addresses** (district) 12000 Biscayne Blvd., Suite 411, North Miami 33181 (Tallahassee) 302 Senate Office Building 404 South Monroe Street, 32399-1100 **telephones** (district) 305/893-0488 (Tallahassee) 850/487-5121.

<http://www.leg.state.fl.us/senate/members/s38>



Donald C. "Don" Sullivan, M.D.
Republican, District 22

Orthopedic Surgeon **born** June 10, 1936 in Chicago, Illinois. Moved to Florida in 1972 **education** Northwestern University, B.S., 1958; Roosevelt University; Baylor University, M.D., 1962 **wife** Irene Hyland of Detroit, Michigan **children** Mary, Patrick, and Andrew **legislative service** elected to the Senate in 1992; reelected subsequently **military service** U.S. Air Force, orthopedic surgeon **religious affiliation** Catholic **recreation** hunter and private pilot **addresses** (district) 4020 Park Street North, Suite 204, St.

Petersburg 33709 (Tallahassee) 306 Senate Office Building 404 South Monroe Street, 32399-1100 **telephones** (district) 727/893-9657 (Tallahassee) 850/487-5065.

<http://www.leg.state.fl.us/senate/members/s22>

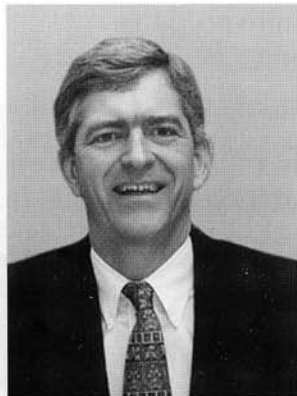


Pat Thomas
Democrat, District 3

Insurance Executive, Mortgage Broker **born** November 21, 1933 in Quincy **education** Quincy High School; University of Florida, B.S.A., 1957 **wife** Mary Ann Jolley of Naples **children** Anne Jolley Thomas Byrd and John Pat Thomas; grandchildren: Corbett Proctor, Ivie Elizabeth, Audrey Anne, and Mary Patterson Thomas **legislative service** House of Representatives, 1972-1974; elected to the Senate in 1974, reelected subsequently; President Pro Tempore, 1992-1993; President, 1993-1994 **military service** U.S. Army,

Korea **religious affiliation** Presbyterian **recreation** hunting, boating, and fishing **address** 406 Senate Office Building 404 South Monroe Street, 32399-1100 **telephone** 850/487-5004.

<http://www.leg.state.fl.us/senate/members/s03>



Daniel Webster
Republican, District 12

Owner, Webster Air Conditioning and Heating, Inc. **born** April 27, 1949 in Charleston, West Virginia. Moved to Florida in 1956 **education** Georgia Tech, B.S.E.E., 1971 **wife** Sandy Jordan of Orlando **children** David Lee, Brent Alan, Jordan Daniel, Elizabeth Anne, John Elliott, and Victoria Suzanna **legislative service** House of Representatives, 1980-1998; Minority Floor Leader, 1982-1984; Orange County Delegation Chairman, 1985, 1991; Minority Whip, 1988-1990; Republican Leader Pro Tempore, 1992-1994; Republican Leader, 1994-

1996; Speaker of the House of Representatives, 1996-1998; elected to the Senate in 1998 **religious affiliation** Baptist **addresses** (district) 315 S. Dillard Street, Winter Garden 34787 (Tallahassee) 316 Senate Office Building 404 South Monroe Street, 32399-1100 **telephones** (district) 407/656-0066 (Tallahassee) 850/487-5047.

<http://www.leg.state.fl.us/senate/members/s12>

Secretary of the Senate

At its organization session every two years, the Senate designates a Secretary of the Senate pursuant to the Constitution of the State of Florida. This non-member officer keeps all Senate records and authenticates each act and resolution passed by the Senate. She also publishes the journal and the calendar and supervises Legal Research and Drafting, which drafts proposed legislation.

Other operations within the Secretary's Office include: bill and amendment preparation, duplication and distribution of documents, recording of actions taken by the Senate, and the performance of support services for the Senate. Special programs, such as the vote system and the Chamber Automation System, are coordinated by the Secretary's Office.

As liaison to the Office of Legislative Information Technology Services, the Secretary serves as the Senate coordinator for the development and maintenance of computer applications used by Senate staff as well as for investment in and allocation of hardware and software resources. Senate information included in the Legislature's Online Sunshine homepage is coordinated by the Secretary's Office.

The Secretary speaks to various visiting civic and student groups during the year. The Office of the Senate Secretary hosts numerous mock sessions throughout each year. Staff and facilities are provided for the YMCA Youth Legislature, Boys State, Girls State, the Silver-Haired Legislature, and others.



Faye W. Blanton
Secretary of the Senate

born November 9, 1946 in Tallahassee **education** Jones Business College, Jacksonville, 1967 **husband** Edwin F. (Ed) Blanton of St. Petersburg **children** Wade, Doug, and Laurel McDaniel; Garrett and Travis Blanton; grandchildren: Zachary Gillis; Megan and Garrett Blanton, Jr. **legislative service** committee secretary, Senate Governmental Efficiency Committee, 1970-1972; Administrative Assistant to Director of Management and Staff, 1973-1974; Assistant to

Secretary of the Senate, 1974-1984; Assistant Secretary of the Senate, 1984-1996; designated Secretary of the Senate, November 19, 1996, subsequently redesignated November 17, 1998 **religious affiliation** Baptist **recreation** gardening, walking, and reading **address** Suite 405, The Capitol 404 South Monroe Street, 32399-1100 **telephone** 850/487-5270.

Sergeant at Arms

The President employs a Sergeant at Arms who maintains order in the chamber, in the gallery, and in committee rooms. He is responsible for the maintenance of all Senate property.

Wayne W. Todd, Jr. Sergeant at Arms



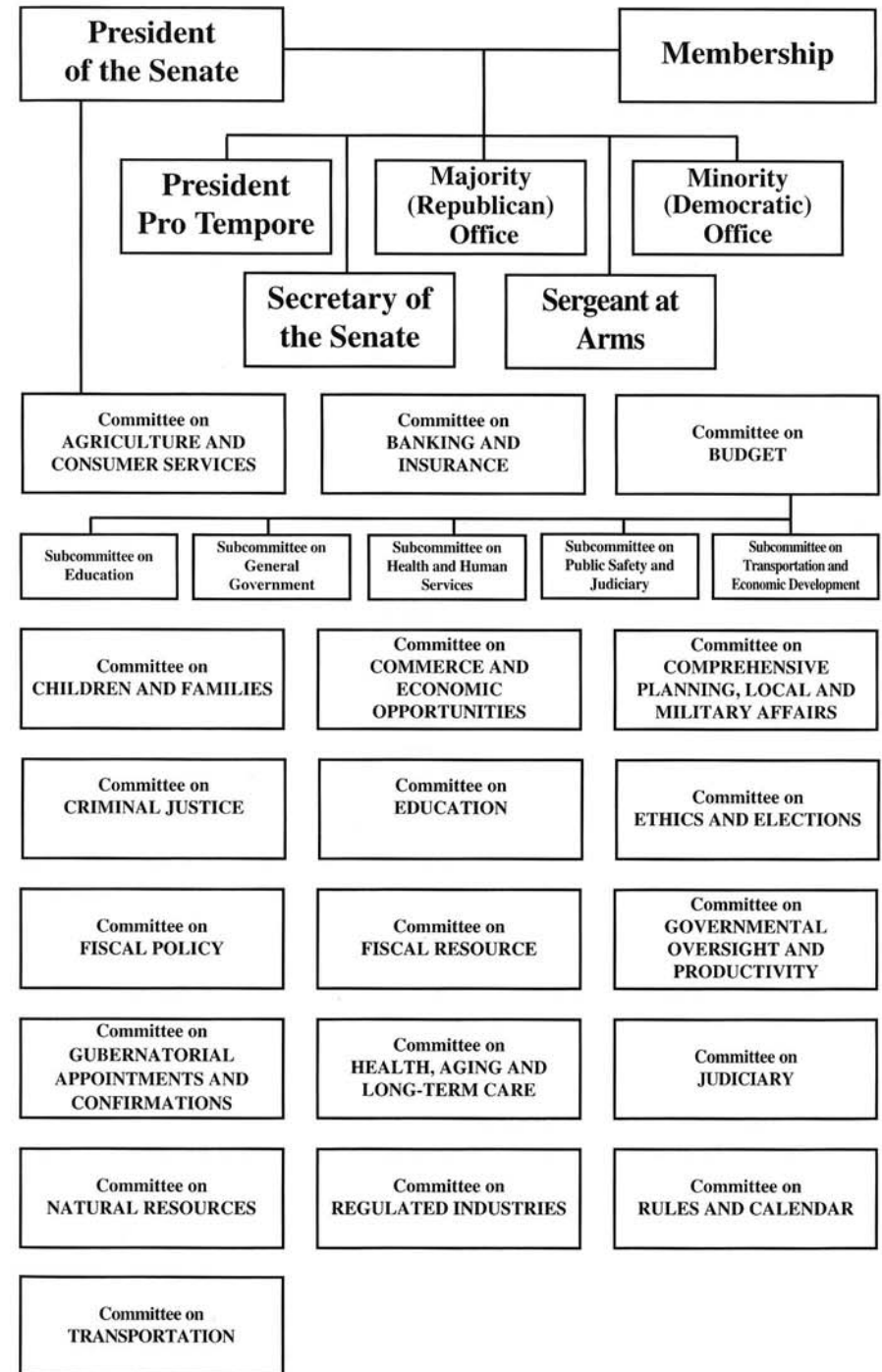
born July 19, 1944 in Tallahassee **education** Florida State University, B.S., 1968; attended Florida State University College of Law **wife** Ann Sadler of St. Petersburg **children** Kathryn Jennifer Tennyson and Julie Hunt **legislative service** Acting Sergeant at Arms of the Senate, 1982; elected Sergeant at Arms of the Senate, November 16, 1982 **military service** Florida National Guard, 1962-1966 **religious affiliation** Methodist **recreation** hunting and fishing **address** Suite 403, The Capitol 404 South Monroe Street, 32399-1100 **telephone** 850/487-5224.

The Capitol 404 South Monroe Street, 32399-1100 telephone 850/487-5224.



Participants in the 1999 Senate-led Statewide Drug Control Summit view a presentation on the Senate's Chamber Video Display System.

SENATE ORGANIZATION



PRESIDENTS OF THE SENATE

Session	President	Session	President
1839-1840	John Warren	1927	Samuel W. Anderson
1841	William P. Duval	1929	Jesse J. Parrish
1842	William H. Brockenbrough	1931	Patrick C. Whitaker
1843-1844	George Walker	1933	Truman G. Futch
1845	James A. Berthelot	1935	William C. Hodges
1846	Dennitt H. Mays	1937	D. Stuart Gillis
1847	Daniel G. McLean	1939	J. Turner Butler
1848	Erasmus D. Tracy	1941	John R. Beacham
1850-1852	Robert J. Floyd	1943	Philip D. Beall
1854-1855	Hamlin V. Snell	1945	Walter W. Rose
1856	Philip Dell	1947-1948	S. Dilworth Clarke
1858-1859	John Finlayson	1949	Newman C. Brackin
1860-1861	Thomas Jefferson Eppes	1951	Wallace E. Sturgis
1862-1863	Enoch J. Vann	1953	Charley E. Johns
1864	Abraham K. Allison	1955-1956	W. Turner Davis
		1957	William A. Shands
From 1865 through 1887 the Lt. Governor served as President.		1959	Dewey M. Johnson
		1961	W. Randolph Hodges
		1962-1963	F. Wilson Carraway
1889*	Patrick Houstoun	1965	James E. Connor
1889	Joseph B. Wall	1967	Verle A. Pope
1891	Jefferson B. Browne	1968-1970	John E. Mathews, Jr.
1893	William H. Reynolds	1970-1972	Jerry Thomas
1895	Frederick T. Myers	1972-1974	Mallory E. Horne
1897	Charles J. Perrenot	1974**	Louis de la Parte
1899	Frank Adams	1974-1976	Dempsey J. Barron
1901	Thomas Palmer	1976-1978	Lew Brantley
1903	Frank Adams	1978-1980	Philip D. Lewis
1905	Park M. Trammell	1980-1982	W. D. Childers
1907	William H. Harris	1982-1984	Curtis Peterson
1909	Frederick M. Hudson	1984-1986	Harry A. Johnston II
1911-1912	Frederick P. Cone	1986-1988	John W. Vogt
1913	Herbert J. Drane	1988-1990	Bob Crawford
1915	Charles E. Davis	1990-1992	Gwen Margolis
1917-1918	John B. Johnson	1992-1993	Ander Crenshaw
1919	James E. Calkins	1993-1994	Pat Thomas
1921	William A. MacWilliams	1994-1996	James A. Scott
1923	Theo T. Turnbull	1996-1998	Toni Jennings
1925	John S. Taylor	1998-2000	Toni Jennings

*Extraordinary Session

**Served as Acting President from July 1, 1974 when President Horne resigned until November 6, 1974

CONTACTING YOUR SENATOR

Your Senator is interested in hearing your opinions concerning the issues on which he or she will vote. This section will provide you with guidelines on how to approach legislators and how best to express your ideas so that they will be read, or listened to, and understood.

Most people communicate with their Senator by letter (increasingly by email), but you can also try to speak directly with him or her by telephone or even in person. No matter which method you choose, the same guidelines apply:

- Know your subject matter well, and have data to back up your point of view.
- Inform yourself about the full name and address of your Senator and about the positions he or she has taken on the issues that concern you.
- Do not use form letters; instead, if you are working from a form letter, rewrite the essential points in your own words.
- If you represent others from your community, formally or even informally, indicate that to the Senator.
- Be brief and to-the-point in your presentation. Attach supporting data or documents and refer to them in your cover letter.
- Be courteous.
- Be completely fair in your presentation of the facts.
- If you are interested in a specific bill, refer to that bill by its number. You can find out this information from the Division of Legislative Information at 1-800-342-1827. Note that Senate Bills use even numbers and House Bills use odd numbers.
- Always provide your address (street and/or email) and your telephone number so that your Senator or his or her staff assistants can contact you for further data or discussion.
- If you are going to meet personally with your Senator, prepare carefully for the meeting and be on time. If he or she asks you for more information than you have brought with you, be prompt in responding to the request.

You can build an effective relationship with your Senator on a series of issues

and make considerable contributions to the process of creating public policy. Your Senator will be grateful for your participation.

COMMITTEE TESTIMONY

You may want to keep track of your bills as they proceed through the legislative process. To find out which committees your bills have been assigned to, access Online Sunshine, contact your Senator's office, or call the Division of Legislative Information (1-800-342-1827).

You may have an opportunity to appear before a committee that is hearing the bill by contacting the committee as soon as the bill has been referred to the committee. The committee's chairman controls his or her committee's agenda and schedules the bills.

If your bill is scheduled for a public hearing, keep these guidelines in mind:

- When signing up to testify on a bill, the committee may require you to present written testimony for distribution to committee members and staff. Written testimony should be submitted to the appropriate office at least 24 hours prior to the scheduled committee hearing.
- Generally, each committee chairman follows the order of the bills listed on the agenda.
- As a courtesy to departmental officials who must testify before a number of committees each day, most committee chairmen allow departmental representatives to present their testimony before the general public presents its testimony.
- Prepare your oral testimony in advance and be brief unless asked to elaborate.
- Be specific and to the point regarding the bill you are testifying on.
- Be prepared to answer questions from committee members on your testimony or on the position you have taken on each bill. If you do not know the answer to a question, just say so.
- Be aware of the number of bills scheduled and the other people signed up to testify. If you are asked to summarize your oral testimony, comply with the committee chairman's request.
- Be polite, not adversarial.

SENATE PAGE PROGRAM

You can be a part of history! The Senate Page Program gives Florida students the rare opportunity to observe and participate in the legislative process.

During regular sessions of the Legislature, participating students come to Tallahassee for one week to work in the Senate Chamber, distribute materials, and deliver messages to Senators and staff. Each Senator may sponsor four pages (ages 15-18). Senators may also submit applications for alternate pages, who serve on an as-needed basis.

Sponsoring Senators give an application to the students they wish to sponsor. Senators submit completed applications by February 1 of each year. The Office of Administration and Staff Development schedules each page for one week of service during the upcoming session.

Pages receive a minimum-wage stipend for participating in the program. Students are expected to provide their own transportation, housing, and meals while in Tallahassee.

Each week of session, pages discuss the legislative process and participate in a "mock session." Students act as Senators, debating and voting on bills. Other educational opportunities and Capitol tours are planned during session.



President Jennings and the students who served as Senate Pages the first week of the 1999 Session.

THE SENATE CHAMBER

The Senate Chamber, also known as the “floor,” is the room on the fourth floor of the Capitol where Senators debate the merits of proposed legislation. The current room is the fourth used since the first session of the Senate was called to order in 1839. The first session held in this chamber occurred in 1978.

On the floor above the chamber is the gallery. Citizens may sit in the gallery to observe the Senate in session. From the gallery, attention is drawn to the rostrum where the President is presiding.

The President occupies the “chair,” pacing the flow of legislation, deciding who will speak, and ruling on parliamentary disputes. The President frequently calls on other Senators to preside while she works out the details of legislative proposals.



The Senate in session as viewed from the gallery.

The portraits hanging below the gallery commemorate past Presidents of the Senate. After each President’s term, a portrait is painted and hung in this area. The portraits are arranged in chronological order with the most recent one on the presiding officer’s right. Each time the newest one is added, the oldest one is taken down and moved to the Historic Capitol, keeping 100 years of past Presidents on display in the “new” chamber. The chamber automation system, designed to display amendments and information on bills, allows Senators the flexibility of accessing legislative information from their Tallahassee offices and in the Senate chamber on their laptop computers.

In front of the President’s rostrum is the Secretary’s “desk,” which is staffed by the Secretary of the Senate. Legislative business is not properly before the Senate until it is “on the desk.” Clerks at this desk read the bills and amendments before the body and record Senate actions. These actions are published in the journal, the official record of Senate proceedings. A Senator who wishes to “approach the well” to make a speech speaks from one of the reading podiums at the Secretary’s desk.

Voting boards on each side of the chamber record a member’s green “yea” or red “nay” vote. (The white lights you see next to some names indicate that the Senator wants a “page” to deliver a message or retrieve a file from his or her office.) The voting boards also display the number of the bill or amendment being debated and other information related to the proceedings. Electronic voting was first used in the Senate in 1966, and now nearly all votes are recorded electronically.

The seating arrangement in the chamber is determined by the President. At one time, the chamber desk was a member’s only desk. Members’ secretaries sat beside them in the chamber, even during sessions. Now adequate office space is provided for the Senators and their staff; telephones at each chamber desk provide direct communication with the staff. Today, only members of the Senate and designated staff members are allowed in the chamber while the Senate is in session. Certain present and past state officials and guests invited by the President may also enter the chamber during a session. All men in the chamber must wear coats and ties.

Senators are addressed by their district number when they are recognized to speak. Custom decrees that a Senator may not be addressed as a gentleman or lady. He or she is “the Senator from the fifth,” for example, but never “the gentleman or lady from the fifth.” During debate, the members are always formally addressed as “Senator,” not by their given names.

Just over the main entrance is the press gallery, where members of Florida’s press corps record history. The remainder of the gallery is open to the public at all sessions, except that a portion of the gallery is usually reserved for the Senators’ families and other sections are often reserved for visiting students.

Television cameras from the Florida Channel are positioned at the front and rear of the gallery to provide live, televised coverage of all Senate sessions. Each weekday evening during the session, the Sunshine Network, The Florida Channel, and Florida’s public television affiliates broadcast “Capitol Update,” a live half-hour news program explaining and analyzing each day’s most significant legislative developments. The broadcasts are funded by the Legislature, but all editorial content is determined by the group of professional journalists who produce the programs. Florida’s legislative telecasts were used as a model for a similar system installed in 1979 in the U.S. House of Representatives.

THE FLORIDA SENATE

1998-2000



BROWN-WAITE
Dist. 10
Brooksville
(R)



SEBESTA
Dist. 20
St. Petersburg
(R)



FORMAN
Dist. 32
Cooper City
(D)



JONES
Dist. 40
Miami
(D)



SECRETARY
Faye W. Blanton



KING
Dist. 8
Jacksonville
(R)



BRONSON
Dist. 18
Indian Harbour Beach
(R)



DAWSON-WHITE
Dist. 30
Ft. Lauderdale
(D)



SILVER
Dist. 38
North Miami
(D)



HORNE
Dist. 6
Orange Park
(R)



BURT
Dist. 16
Ormond Beach
(R)



KLEIN
Dist. 28
Delray Beach
(D)



MEEK
Dist. 36
Miami
(D)



MITCHELL
Dist. 4
Jasper
(D)



WEBSTER
Dist. 12
Ocoee
(R)



CARLTON
Dist. 24
Osprey
(R)



GUTMAN
Dist. 34
Miami
(R)



PRESIDENT JENNINGS



HOLZENDORF
Dist. 2
Jacksonville
(D)



DYER
Dist. 14
Orlando
(D)



SULLIVAN
Dist. 22
St. Petersburg
(R)



MYERS
Dist. 27
Stuart
(R)

President Pro Tempore

Dist. 9
Orlando
(R)

The Secretary's Desk



McKAY
Dist. 26
Bradenton
(R)

Rules Chairman



LATVALA
Dist. 19
Palm Harbor
(R)

Majority (Republican) Leader



LAURENT
Dist. 17
Bartow
(R)



SCOTT
Dist. 31
Ft. Lauderdale
(R)



CHILDERS
Dist. 1
Pensacola
(R)



CLARY
Dist. 7
Destin
(R)



HARGRETT
Dist. 21
Tampa
(D)



CAMPBELL
Dist. 33
Tamarac
(D)



THOMAS
Dist. 3
Quincy
(D)



COWIN
Dist. 11
Leesburg
(R)



LEE
Dist. 23
Brandon
(R)



ROSSIN
Dist. 35
West Palm Beach
(D)



KIRKPATRICK
Dist. 5
Gainesville
(R)



GRANT
Dist. 13
Tampa
(R)



SAUNDERS
Dist. 25
Naples
(R)



DIAZ-BALART
Dist. 37
Miami
(R)



JENNINGS
Dist. 9
Orlando
(R)
President



KURTH
Dist. 15
Palm Bay
(D)



GELLER
Dist. 29
Hallandale
(D)



CASAS
Dist. 39
Hialeah
(R)



SERGEANT AT ARMS

Wayne Todd

THE 1998-2000 FLORIDA SENATE AT WORK



President Jennings and Senator Clary discussing legislative matters.



Staff of the Committee on Agriculture and Consumer Services working on an interim report.



Top national and statewide drug control officials attending the 1999 Senate-led Statewide Drug Control Summit.



Committee staff examining issues concerning regulated industries.



Staff of the Committee on Natural Resources finalizing a committee report.



President Jennings and Senator Casas viewing an amendment on the Chamber Automation System.



Secretary Blanton assisting Senator Meek with accessing the Chamber Automation System.



Senator Bronson conferring with his legislative aide.

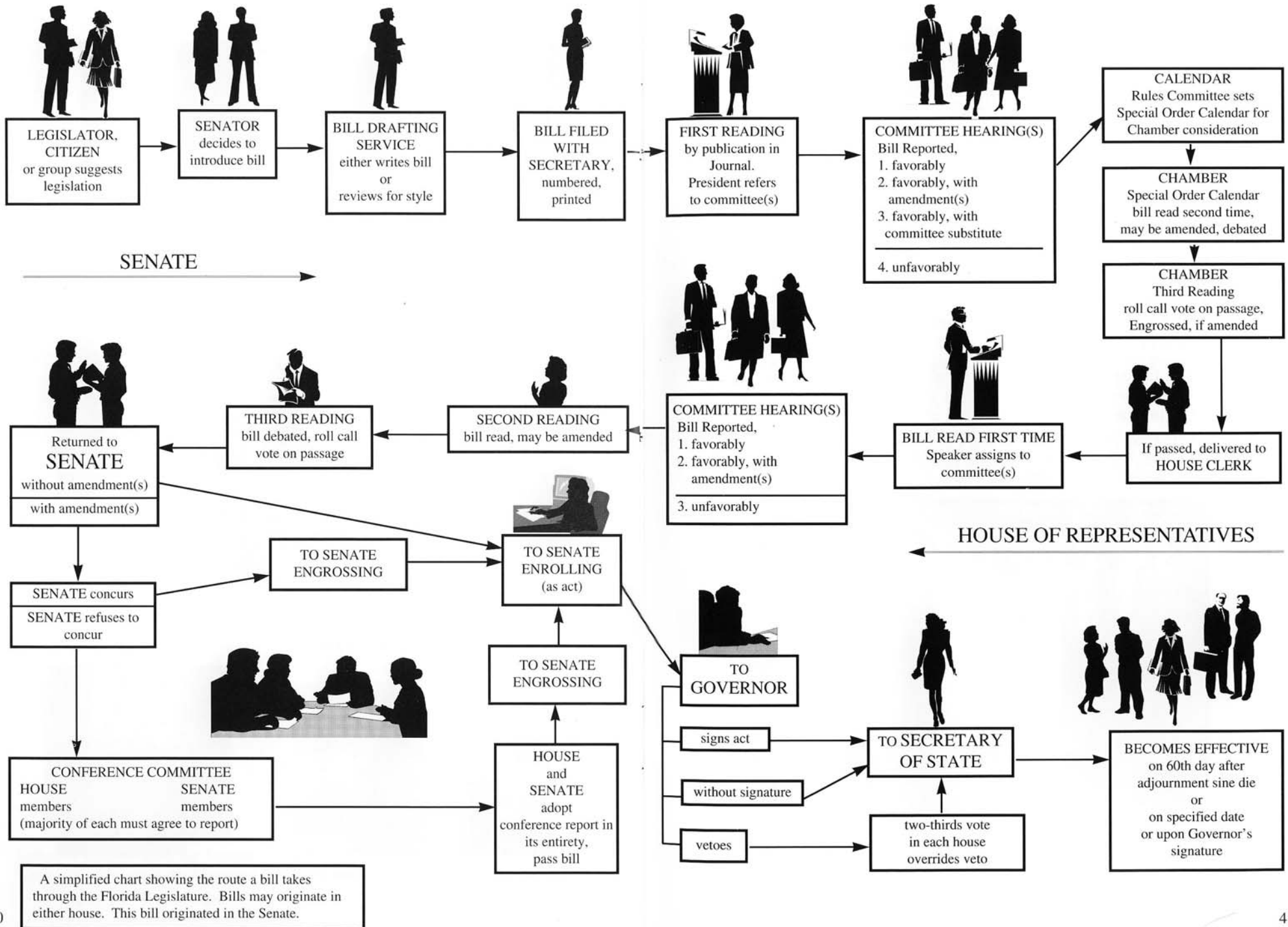


Verifiers in the Secretary's office working on an engrossed bill.



The President's assistant organizing the day's agenda.

HOW AN IDEA BECOMES A LAW



THREE BRANCHES OF GOVERNMENT

Florida's Constitution, in the traditional American pattern of "separation of powers," divides state government into three separate and independent branches. This division of powers creates a system of "checks and balances" ensuring that all three branches properly perform their constitutional duties in the administration of state affairs. Tallahassee is the seat of Florida's state government.

Executive Branch

The Florida Constitution vests the supreme power of the state in the Governor and provides that he or she shall ensure that the laws are faithfully executed. It provides for a Lieutenant Governor to be elected in a joint candidacy with the Governor. The Lieutenant Governor works with the Governor and performs such duties pertaining to the office of the Governor as assigned by the Governor, or as otherwise provided by law. The Constitution also provides that the Governor shall be assisted by an elected Cabinet consisting of a Secretary of State, Attorney General, Comptroller, Treasurer, Commissioner of Agriculture, and a Commissioner of Education.

The Governor, Lieutenant Governor, and members of the Cabinet are elected to four-year terms. They take office on the first Tuesday after the first Monday in January following their election in November of non-presidential election years. The Governor may succeed himself or herself in office unless he or she has served more than 6 years in 2 consecutive terms. Cabinet members are not limited in the number of terms they may seek.



The Governor and the Cabinet. Seated: Secretary of State Katherine Harris, Governor Jeb Bush, Commissioner of Education Tom Gallagher. Standing: Comptroller Robert F. Milligan, Commissioner of Agriculture Bob Crawford, Attorney General Robert A. Butterworth and Treasurer Bill Nelson.

Judicial Branch

The Judicial Branch interprets the law and applies the Constitution. Florida's court system consists of a series of circuit and county courts, district courts of appeal, and the state Supreme Court.

County courts preside over criminal trials of misdemeanors and some civil cases. They also have the power to issue warrants of arrest. There is one county court located in each of Florida's 67 counties. The number of judges in each county court varies with the population and caseload of the county. County judges are elected to four-year terms.

Circuit courts are located in each of Florida's twenty judicial circuits. Some circuits contain only one county, but most are multi-county. The circuit courts are at the top of the trial system, and they also hear limited appeals from county courts. Circuit judges are elected by the voters of the circuits to serve six-year terms.

The District Courts of Appeal are intermediate appellate courts that receive most of the appeals from trial courts. There are five judicial districts in Florida, with courts located in Tallahassee, Lakeland, Daytona Beach, West Palm Beach, and Miami. Appointed by the Governor to serve in each district court, these judges must be reconfirmed by the voters every six years.

The Supreme Court is at the top of Florida's court system and is the final state court of appeal. The Supreme Court determines the constitutionality of statutes, has the authority to issue advisory opinions to the Governor, and has administrative responsibilities over all lower courts. There are seven Supreme Court justices, each appointed by the Governor and retained by a popular vote every six years.



The Supreme Court. Back row: Justice R. Fred Lewis; Justice Harry Lee Anstead; Justice Barbara J. Pariente; Justice Peggy A. Quince. Front row: Justice Leander J. Shaw, Jr.; Chief Justice Major B. Harding; Justice Charles T. Wells.



The Legislative Branch



The Legislative Branch has exclusive law-making power and determines the general policies by which the problems of society are to be met. It may delegate limited rulemaking power to some executive agencies.

Composition and organization

The Constitution of the State of Florida requires that members of the Legislature be elected at the general election in November of even-numbered years.

Florida's Legislature is composed of two houses, the Senate and the House of Representatives. Each house is the sole judge of the qualifications and elections of its members and has the power to choose its own officers and establish its own rules of procedure. All legislative sessions are open to the public, except executive sessions of the Senate when appointments or suspensions of public officials are considered. Either house of the Legislature may initiate legislation on any subject.

The State Constitution provides that the Legislature shall be apportioned into 30 to 40 senatorial districts, and 80 to 120 representative districts. The 1972 Legislature established 40 Senate districts and 120 House districts. Senators serve four-year terms and representatives serve two-year terms. While a legislator may be elected for more than one term, he may not seek reelection if at the end of his current term he has served for eight consecutive years.

Legislative sessions

Two weeks after each general election, the Legislature convenes for the exclusive purpose of organization and election of officers. No

legislation is considered during the organization session.

Regular sessions of the Legislature begin on the first Tuesday after the first Monday in March in odd-numbered years and continue for 60 consecutive days. The Legislature may change its convening date in even-numbered years, but generally the date remains the same as in odd-numbered years, except once every 10 years when the Constitution requires the Legislature to reapportion the state's voting districts. Special sessions may be called by the Governor, or may be convened by joint proclamation of the President of the Senate and the Speaker of the House of Representatives. Special sessions may not exceed 20 days, unless extended by a three-fifths vote of each house. Each "call" for a special session outlines the business to be considered. The Senate may resolve itself into executive session to consider appointment to or removal from public office, even when the House of Representatives is not meeting.

Rules

During the organization session, each house adopts its rules of procedure to be followed for the next

two years. The rules provide for orderly proceedings and determine how each house will conduct its business.

Committees

A committee functions to study, research, and plan solutions to "people problems." The Senate and

House rules provide for certain standing committees, special or select committees, and subcommittees. The presiding officers name the chairmen and members of all committees.

Bills are assigned to one or more committees for study. Committees may hold public hearings where committee members hear sponsoring legislators and others who are interested in the bill. The committee may vote to recommend the bill favorably; favorably, with a committee substitute; unfavorably; or favorably with amendments to be considered when the bill is debated on the floor by the respective house.

When the Senate and House are unable to agree on the final content of a bill, it goes to a conference committee. This committee, composed of members of both houses, tries to resolve the differences between the Senate and House versions of a bill.

Other committees commonly used are joint committees, which are composed of members from each house, and select committees, which are usually appointed to make recommendations on special or unique problems.

Lobbying

A lobbyist is anyone who tries to influence legislation. Unless exempt, all persons who seek to

influence legislation must register with the Division of Legislative Information before they begin lobbying. Every lobbyist must also state any direct business association or partnership with any current member of the Legislature and make periodic reports on moneys spent lobbying.

Journals and Calendars

The Secretary of the Senate and the Clerk of the House each publish daily journals and calendars during the legislative session. Each journal details

the proceedings on the floor, committee reports, and related actions of the previous day. The calendar is a schedule of business to be taken up that day and the next two days, including committee meetings and bills to be considered.

Forms of legislation

Legislative proposals may be in the form of bills, resolutions, concurrent resolutions, joint resolutions, or memorials. A bill is a proposed law, and it may be

either a general bill or a local bill. A general bill would have a general impact within the state; a local bill would affect only a particular county, city, or town named in the bill. A majority vote is required to pass a bill. Companion bills are often used as a timesaving device. These are identical bills introduced in both houses, which allow simultaneous committee study in each body. The appropriations bill is one of the most important bills considered by the Legislature. This bill is the state's budget and it specifies the amount of money available to various state agencies during the next 2 years. The appropriations bill follows the same course as other general bills, but because it is difficult to get both houses to agree on all items in the bill, a conference committee is usually appointed to resolve the differences.

GLOSSARY OF LEGISLATIVE TERMS

Act. A bill passed by the legislature.

Adjourn. To end a legislative session, a day's session, or a committee meeting.

Adopt. To vote to accept.

Amendment. A proposal to change the original terms of a bill.

Bicameral. Consisting of two houses. All states have bicameral legislatures except Nebraska, which has only one house (unicameral).

Bill. A draft of a proposed law.

Budget. A bill that states how much money will be spent on government programs and services.

Calendar. List of bills awaiting action.

Chair. A legislator who presides over a committee meeting or a session.

Chamber. Also known as the "floor," it is the room in which the Senate or the House of Representatives meets.

Clerk of the House of Representatives. The person designated by the House of Representatives to assist the members of the House in the detailed processes of enacting laws and to record that history.

Committee. A group of Senators or Representatives appointed by the presiding officer to consider an issue or question and to submit a report on its recommendations for action by the body that created it.

Constitution. The written instrument embodying the fundamental principles of the state that establishes power and duties of the government and guarantees certain rights to the people.

Constituent. A citizen who resides in the district of a legislator.

Convene. To meet in formal legislative session.

Debate. To argue the merits of a bill, for and against.

Decorum. Appropriate behavior and conduct.

District. That area of the state represented by a legislator, determined on the basis of population.

Gallery. The seating area for visitors located above the chambers (on the fifth floor of the Capitol).

Governor. The highest ranking state official.

Journal. The official record of the proceedings of the Senate or the House of Representatives.

Law. The final product of the legislative process. It is the end result of the introduction of a bill, its passage by both houses, its approval by the Governor (or the overriding of his veto by the legislature), and its recording by the Secretary of State.

Majority party. The political party having greater than a majority of seats in a house.

Minority party. The political party having fewer than a majority of seats in a house.

Motion. A proposal, usually oral, made to the presiding officer and relating to procedure or action before a legislative body.

Oath of Office. An oath or vow taken by a public official prior to taking up his or her official duties.

Order of Business. The defined routine of procedure in the legislative body each day. It can be deviated from only by waiver of the rules.

Passage. Favorable action on a measure before the legislature.

President of the Senate. The presiding officer of the Senate. He or she is designated as President by the majority party in caucus and then elected by the full membership of the Senate for a term of two years.

President Pro Tempore of the Senate. Literally, president "for a time." He or she performs specified duties as prescribed by the Senate Rules or the Senate President.

Quorum. The number of members required for the conduct of business.

Repeal. The removal of a provision from the law.

Roll call. To determine a vote on a question by the taking of names in favor and opposed.

Rules. Provisions for the procedure, organization, officers, and committees of each house of the legislature.

Secretary of the Senate. The person designated by the Senate to assist Senate officers, members, and staff in the detailed processes of enacting laws and to record that history.

Sergeant at Arms. The person in each house who is responsible for the security of the legislative house and the maintenance of that house's property.

Session. The period during which the legislature meets.

Sine die. Refers to final adjournment of a legislative session. The term is sometimes used to denote the ceremony involving the dropping of white handkerchiefs which symbolizes the end of a regular session.

Speaker of the House of Representatives. The presiding officer of the House of Representatives. He or she is designated as Speaker by the majority party in caucus and then elected by the full membership of the House for a term of two years.

Veto. Return by the Governor to the legislature of a bill without his or her signature; the veto message from the Governor usually explains why he or she thinks the bill should not become a law.

Vote. A decision on a question, either affirmative or negative.

FLORIDA IN THE 106TH CONGRESS



Washington, D.C., is the seat of the nation's government. The names and addresses of Florida's representatives in the legislative branch may be found on a separate page in many Florida telephone directories.

Further information on each Member of Congress may be found at the official websites for The United States Senate (www.senate.gov) and The United States House of Representatives (www.house.gov).



United States Senate

The Senate is composed of 100 Members, two from each state, elected by the people pursuant to the 17th Amendment to the Constitution. A Senator must be at least 30 years of age, have been a citizen of the United States for nine years, and, when elected, be a resident of the state from which the Senator is chosen. The term of office is six years, and one-third of the total membership of the Senate is elected every second year. The terms of both Senators from a particular state are so arranged that they do not terminate at the same time. Of the two Senators from a state serving at the same time, the one who was elected first (or if both were elected at the same time, the one elected for a full term) is referred to as the "senior" Senator from that state. The other is referred to as the "junior" Senator. Senators Bob Graham and Connie Mack represent Florida in Washington.

United States House of Representatives

The House of Representatives is composed of 435 Members elected every two years from among the 50 states, apportioned according to their total populations. The Constitution of the United States limits the number of Representatives to not more than one for every 30,000 people.

A Representative must be at least 25 years of age, have been a citizen of the United States for seven years, and, when elected, be a resident of the state in which the Representative is chosen.

In addition to the Representatives from each of the states, there is a Resident Commissioner from the Commonwealth of Puerto Rico and Delegates from the District of Columbia, American Samoa, Guam, and the Virgin Islands. The Resident Commissioner and the Delegates have most of the prerogatives of

Representatives, with the important exception of the right to vote on matters before the House.

Under the provisions of Section 2 of the 20th Amendment to the Constitution, Congress must assemble at least once every year, at noon on the third day of January, unless by law it appoints a different day. A Congress lasts for two years, commencing in January of the year following the biennial election of Members, and is divided into two sessions.

Unlike some other parliamentary bodies, both the Senate and the House of Representatives have equal legislative functions and powers (except that only the House of Representatives may initiate revenue bills), and the designation of one as the "upper" House and the other as the "lower" House is not appropriate.

The Constitution authorizes each House to determine the rules of its proceedings. Pursuant to that authority, the House of Representatives adopts its rules on the opening day of each Congress. The Senate, which considers itself a continuing body, operates under standing rules that it amends from time to time.

The chief function of Congress is the making of laws. In addition, the Senate has the function of advising and consenting to treaties and to certain nominations by the President. In the matter of impeachments, the House of Representatives presents the charges--a function similar to that of a grand jury--and the Senate sits as a court to try the impeachment. Both Houses meet in joint session on the sixth day of January, unless by law they appoint a different day, following a presidential election, to count the electoral votes.

District	Name	Home Town
1	Joe Scarborough	Pensacola
2	Allen Boyd	Monticello
3	Corrine Brown	Jacksonville
4	Tillie K. Fowler	Jacksonville
5	Karen L. Thurman	Dunnellon
6	Cliff Stearns	Ocala
7	John L. Mica.....	Winter Park
8	Bill McCollum	Longwood
9	Michael Bilirakis.....	Palm Harbor
10	C. W. Bill Young.....	Indian Rocks Beach
11	Jim Davis	Tampa
12	Charles T. Canady	Lakeland
13	Dan Miller.....	Bradenton
14	Porter J. Goss.....	Sanibel
15	Dave Weldon	Palm Bay
16	Mark Foley	West Palm Beach
17	Carrie P. Meek	Miami
18	Ileana Ros-Lehtinen	Miami
19	Robert Wexler.....	Boca Raton
20	Peter Deutsch	Ft. Lauderdale
21	Lincoln Diaz-Balart	Miami
22	E. Clay Shaw, Jr	Ft. Lauderdale
23	Alcee L. Hastings	Miramar

We're on the Web

Online Sunshine

The Official Guide to the State of Florida Legislature
(www.leg.state.fl.us)

A variety of legislative data can be accessed on this Internet site. Senate information includes:

- BILLS:** Find complete listing of current session bills including bill text, bill history, amendments, bill analysis, and votes on a specific bill. Bills are also available starting with the 1995 session.
- CALENDARS:** Get up-to-the-minute scheduling on interim and daily activities of the Senate including committee meetings, day's order of business, special order and other calendars, and additional legislative business.
- JOURNALS – DAILY AND BOUND VOLUME:** Obtain the daily record of legislative proceedings during session. The official corrected bound volume journals are available starting with the 1997 session.
- DIRECTORY:** Access information about each Senator and various legislative offices such as committees, staff directors, addresses, and telephone numbers.
- SENATE HANDBOOK:** Read a message from the Senate President, find information on each Senator, an explanation of how a bill becomes a law, and other legislative data.
- SENATOR INFORMATION:** Locate specific information on all Senators, including photos, highlights, personal messages, districts, mailing addresses, committee appointments, bills sponsored, and email addresses.
- CITIZEN'S GUIDE:** Find useful tips on locating your legislators, getting your voice heard, general information about the House and Senate, how committees work, and how a bill becomes a law.
- KIDS' PAGE:** Introduce younger Floridians to the Florida Legislature.

If you have any questions regarding Senate information on this site, please email the Secretary of the Senate at sensecretary.notify@leg.state.fl.us or call the Secretary at (850) 487-5270.

We're on the Web for kids, too!



This Internet site introduces younger Floridians to the Florida Legislature. Designed to be educational, it appeals to children of all ages. This site is easily accessed (interface is not browser specific) and low-resolution graphics allow for ease of use. A viable website, Online Sunshine for Kids is always under construction. Keep checking for new pages.



President Toni Jennings previews the Legislature's new website for kids in February 1999.

How many of these Florida license plates have you seen?

Regular License Plate



Environmental License Plates



Agriculture



Conserve Wildlife



Everglades
River of Grass



Indian River Lagoon



Largemouth Bass



Manatee



Panther



Sea Turtles



Wild Dolphins

Miscellaneous License Plates



Boy Scouts of
America



Challenger



Florida Arts



Florida Educational



Florida Salutes
Veterans



Florida Sheriffs
Youth Ranches



Florida Special
Olympics



Girl Scouts



Invest In Children



Keep Kids Drug Free



Police Athletic
League



U.S. Olympic
League

Professional Sports Teams License Plates



Florida Marlins
(Baseball)



Florida Panthers
(Hockey)



Jacksonville Jaguars
(Football)



Miami Dolphins
(Football)



Miami Heat
(Basketball)



Orlando Magic
(Basketball)



Orlando Predators
(Arena Football)



Tampa Bay
Buccaneers
(Football)



Tampa Bay Devil Rays
(Baseball)



Tampa Bay Lightning
(Hockey)



Tampa Bay Storm
(Arena Football)

Collegiate License Plates



Barry University



Bethune-Cookman
College



Florida A&M
University



Florida Atlantic
University



Florida Gulf Coast
University



Florida International
University



Florida State
University



University of
Central Florida



University of
Florida



University of
Miami



University of
North Florida



University of
South Florida



University of
West Florida

OFFICIAL STATE DESIGNATIONS



Air fair:

Central Florida Air Fair

Animal:

Florida panther

Beverage:

Citrus sinensis
(orange juice)

Bird:

mockingbird

Butterfly:

Zebra Longwing

Freshwater fish:

Florida largemouth bass

Gem:

moonstone

Marine mammal:

manatee

Pageant:

"Indian River"

Play:

"Cross and Sword"

Reptile:

American alligator

Rodeo:

Silver Spurs Rodeo

Saltwater fish:

Atlantic sailfish

Saltwater mammal:

porpoise

Shell:

horse conch

Stone:

agatized coral

Tree:

sabal palmetto palm

Wildflower:

Coreopsis



About This Handbook

This Florida Senate Handbook is published by the Secretary of the Senate. It is distributed free of charge to Capitol visitors and other interested Floridians to enhance their knowledge and understanding of Florida's government, and particularly, the Florida Senate.

Included in the Handbook are photographs provided by James Gaines and Eric Tourney (Department of Management Services), Donn Dughi (House Clerk's Office), and Paulette Grimaldi and Jim Griner (Senate Secretary's Office). Grateful appreciation is extended to Bob Webb, from the Department of Highway Safety and Motor Vehicles, for providing the license plate images.

While many individuals of the Secretary's staff contributed in myriad ways to publishing this Handbook, special acknowledgment is made to Courtney Christian and Mike Thurmond for the material from *Online Sunshine for Kids*, to Jhonnie Gillispie for compiling and editing the content, and to Shirley Joyce for the computer entry of graphics and text. A special thanks is also extended to Pam Stevens, Jim Higdon, and Claudia Vaccaro with the Office of Legislative Information Technology Services.

Visit the Florida Legislature's home page, *Online Sunshine*:
<http://www.leg.state.fl.us>