





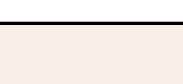
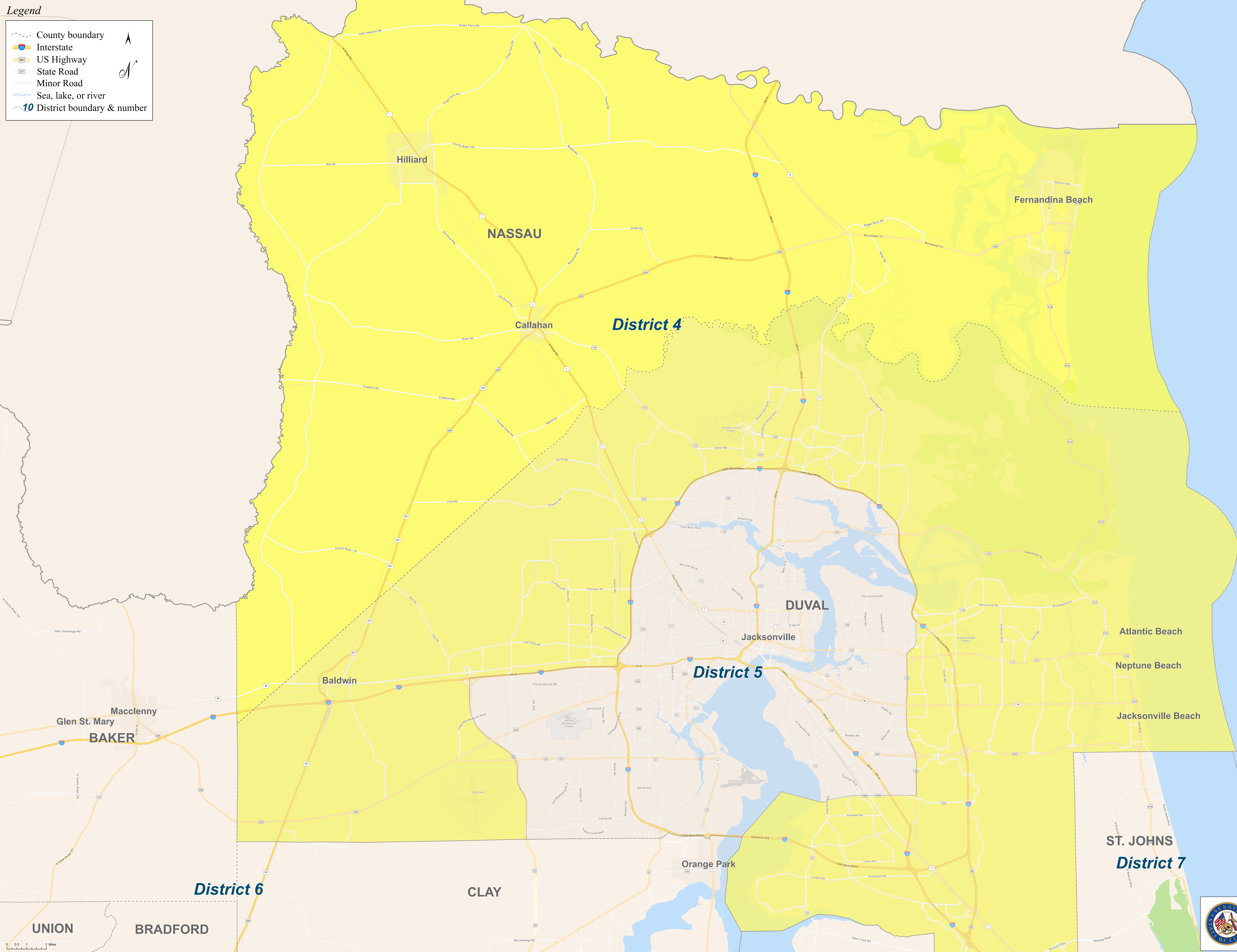
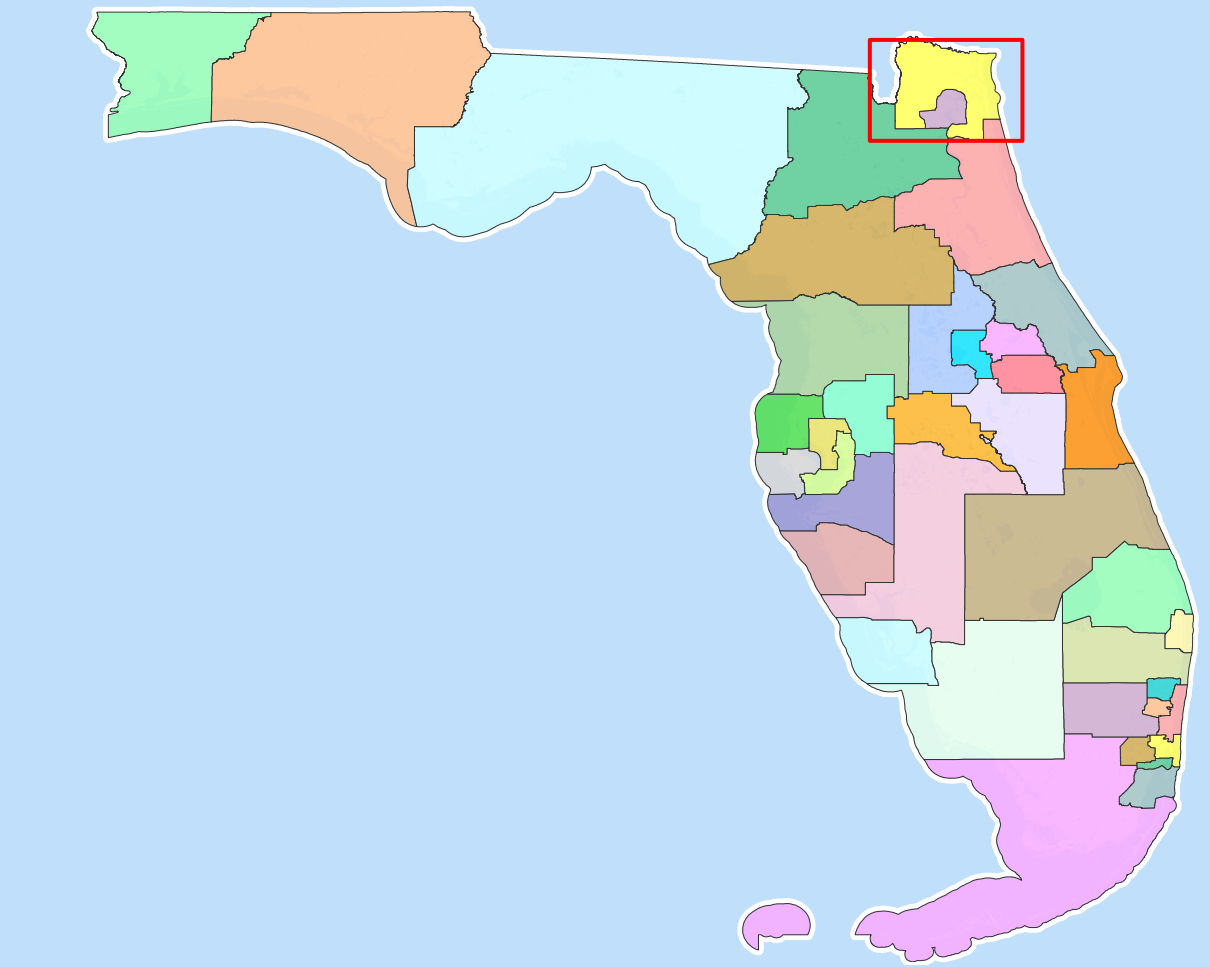
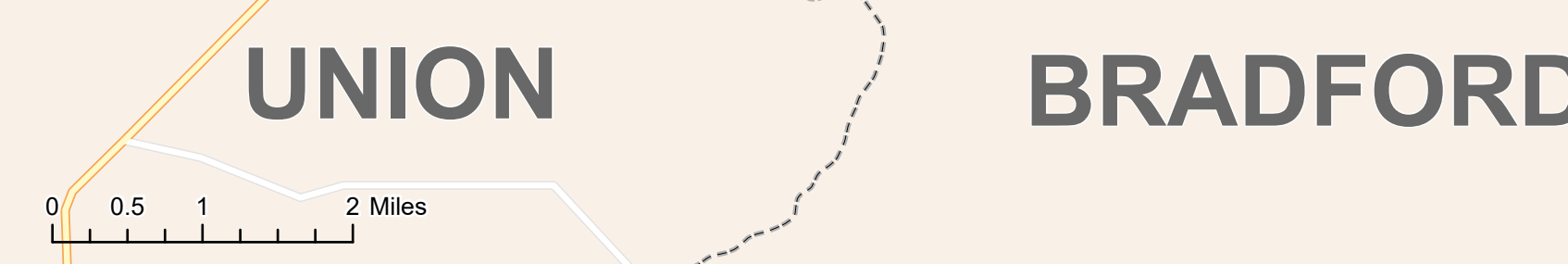


Legend

-  County boundary
-  Interstate
-  US Highway
-  State Road
-  Minor Road
-  Sea, lake, or river
-  District boundary & number



*Florida*  
 State Senate Districts  
 S027S8058  
 \* \* \* \* \*  
 CS/SJR 100  
 February 3, 2022





Map produced by  
 staff of the Florida  
 Senate Committee on  
 Reapportionment

Scan QR  
 Code to View  
 Interactive Map

