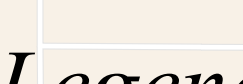





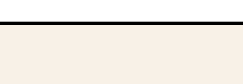
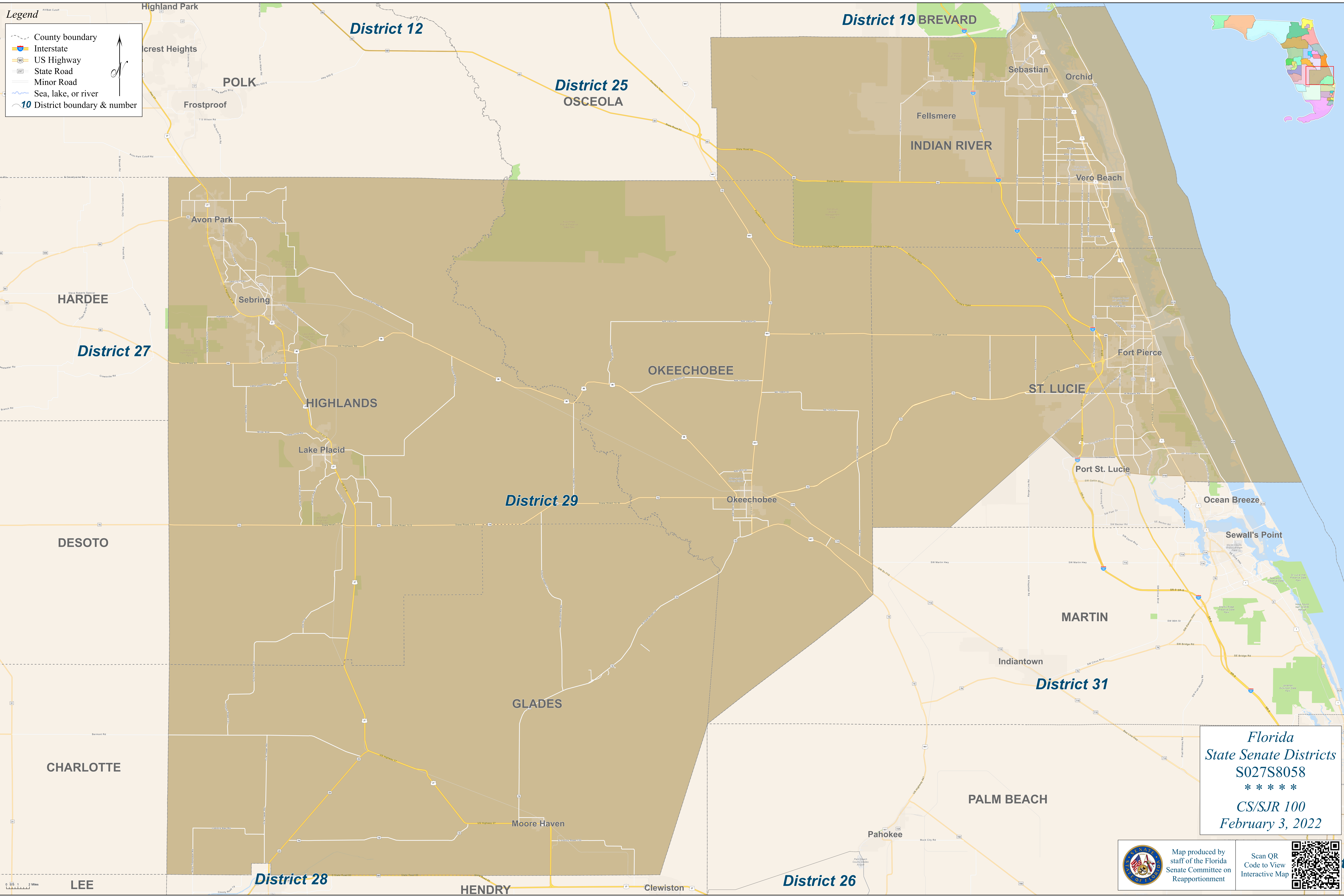
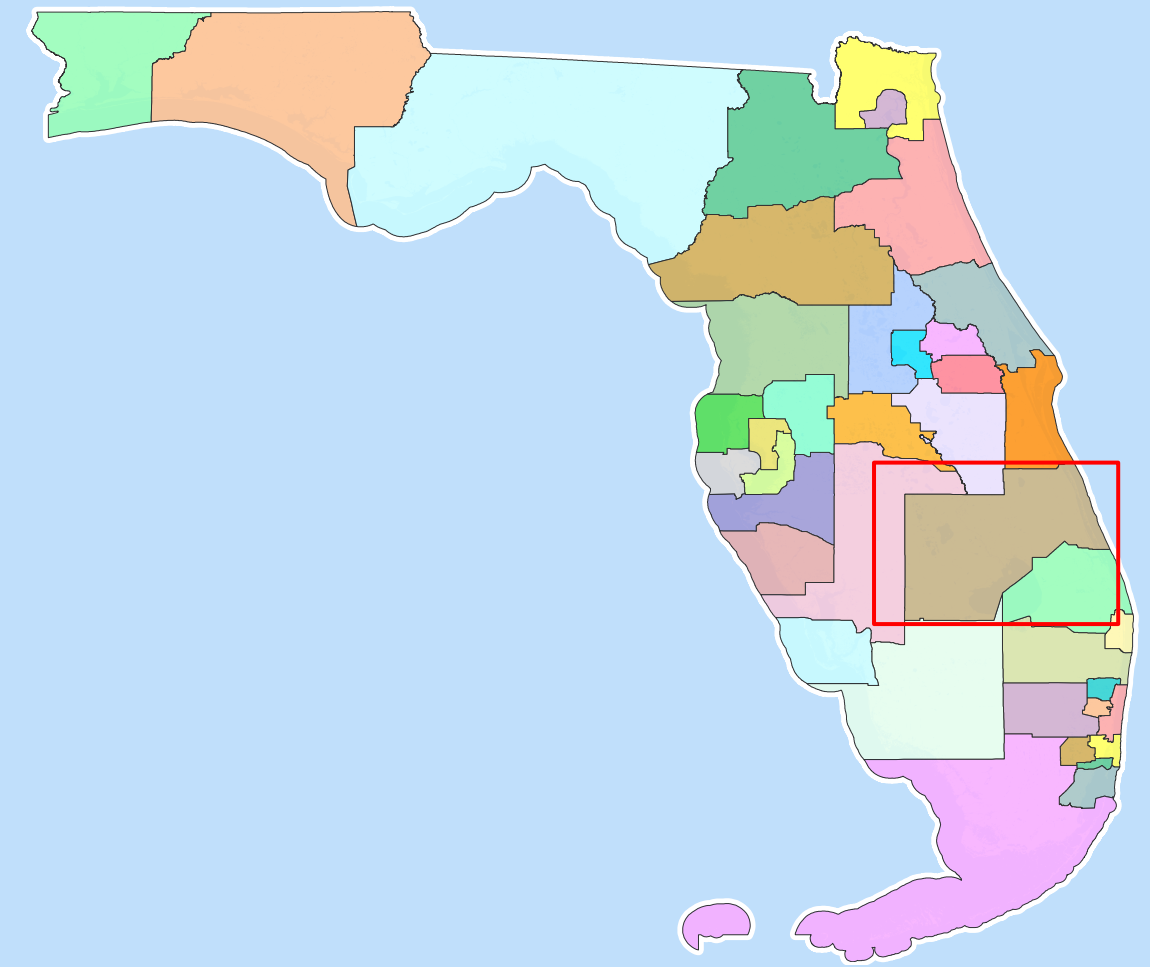


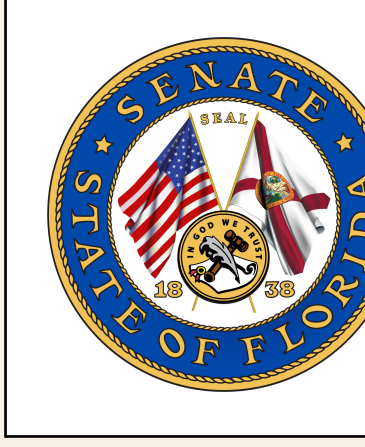
**Legend**

-  County boundary
-  Interstate
-  US Highway
-  State Road
-  Minor Road
-  Sea, lake, or river
-  **10** District boundary & number



*Florida*  
**State Senate Districts**  
**S027S8058**  
 \* \* \* \* \*  
*CS/SJR 100*  
*February 3, 2022*

0 1 2 Miles



Map produced by  
 staff of the Florida  
 Senate Committee on  
 Reapportionment

Scan QR  
 Code to View  
 Interactive Map

