



# THE FLORIDA SENATE

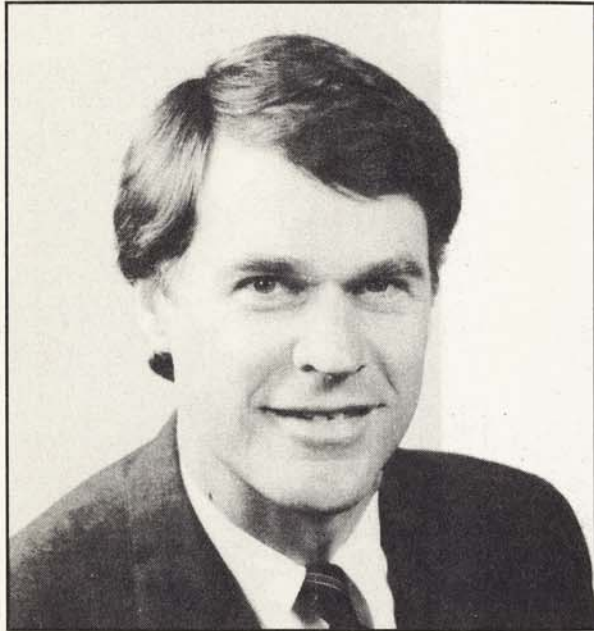
1992 • 1994



# The Senate

A funny thing happened on the way to organization of the 1992-1994 term of the Florida Senate.

When the Senate met to organize as provided in the Constitution, there were 20 Democrats and 20 Republicans in the 40-member Senate and each had its President-Designate. After several ballots it was obvious that the Senate was deadlocked at 20/20 on the election of a President for the 1992-1994 term.



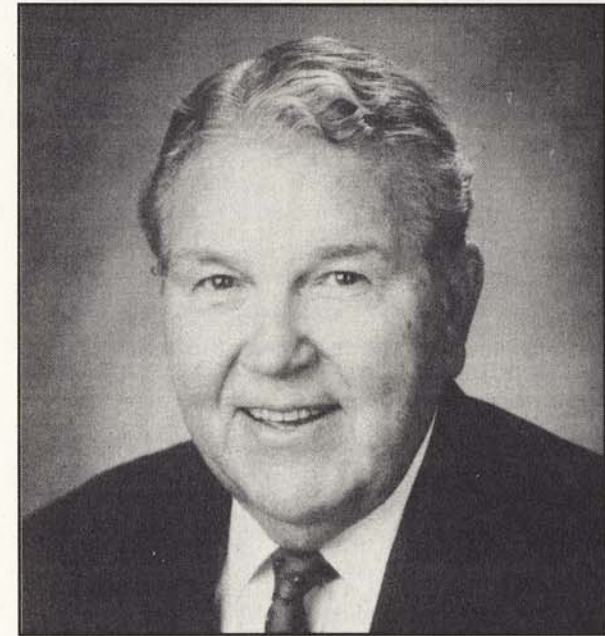
Senator Ander Crenshaw

President 1992-1993  
President Pro Tempore 1993-1994

After several days of negotiation between the parties, a solution was worked out which provided for splitting the term into two one-year terms with the Republican President-Designate in command the first year and the Democratic President-Designate taking over for the second year.

# Presidents

So, if you are reading this handbook prior to October 11, 1993, the President of the Senate is Ander Crenshaw, Republican, of Jacksonville. If you are reading it after that date, the President is Pat Thomas, Democrat, of Quincy. While each is serving a one-year term as President, the other is serving a one-year term as President Pro Tempore.



Senator Pat Thomas

President 1993-1994  
President Pro Tempore 1992-1993

The President presides over the Senate and is in charge of all Senate operations. He appoints all committees and committee chairs and references all bills to committees of his choice. During this split term, each President appoints one-half of the members of each committee and appoints committee chairs for one year during his term as presiding officer.



# The Florida Senate

The Florida Senate is made up of 40 members, each from a single district representing more than 323,448 Florida citizens. They are elected for four year terms and may be elected for more than one term.

The 1992 Senate membership includes 34 men and 6 women. There are 20 Democrats and 20 Republicans whose professions or occupations include banking, business, education, law and medicine. The average senator is about 45 years old, is married and has children. Thirty-two of the senators have college degrees and 31 have held other public offices before they were elected to the Senate. Nineteen senators served in the House of Representatives prior to their election to the Senate. Others have served in local governments. The Senate is presided over by a President elected by the members of the Senate for a two year term. Other officers of the Senate, also elected for two year terms, include the President Pro Tempore, the Secretary and the Sergeant at Arms.

Additional information on these officers and the other members of the Senate is contained on the following pages of this booklet. The booklet also further outlines and describes the Senate and its operation and its relationship to the other House of the Legislature and the other two branches of Florida government.

## Members of the Senate

### Ander Crenshaw



*Republican, District 6*

*President, 1992-1993;*

*President Pro Tempore 1993-1994*

Investment Banker **born** September 1, 1944 in Jacksonville **education** University of Georgia, B.A., 1966; basketball scholarship; Sigma Alpha Epsilon; University of Florida, J.D., 1969; Phi Delta Phi Legal Fraternity **wife** Katharine Kirk of Jacksonville **children** Sarah, 15, and Alex, 13 **affiliations** Meninak Club of Jacksonville; Jacksonville Chamber of Commerce **legislative service** House of Representatives, 1972-78; elected to the Senate April 1, 1986, reelected subsequently **other public service** Florida Ethics Commission, 1983-85; Republican State Committeeman, Duval County, 1984-86 **highlights** 1992 National Legislator of the Year Award from the NRLA; Senate Republican Leader, 1990-92; J. Turner Butler Award for Outstanding Member of the Duval Legislative Delegation, 1991 and 1992; Florida Sheriffs Association Leadership Award, 1990; Florida League of Cities "Quality Floridian," 1989 **religious affiliation** Episcopal **recreation** golf and tennis **addresses** (district) 4250 Lakeside Drive, Suite 205, Jacksonville 32210-3306 (Tallahassee) Suite 409, The Capitol, 32399-1100 **telephones** (district) 904/381-6018 (Tallahassee) 904/487-5229.







## Pat Thomas

*Democrat, District 3*

*President Pro Tempore, 1992-1993;  
President, 1993-1994*

Insurance Executive and Mortgage Broker  
**born** November 21, 1933 in Quincy **education**  
Quincy High School; Future Farmers of  
America, State Vice President; University of  
Florida, B.S.A., 1957, Florida Blue Key, Alpha

Gamma Rho President, Senior Class President **wife** Mary Ann Jolley of  
Naples **children** Anne Jolley Proctor and John Pat Thomas;  
grandchildren Corbett Proctor and Ivie Elizabeth Thomas **affiliations**  
BPOE and Rotary, Past President **legislative service** House of  
Representatives, 1972-74; elected to the Senate in 1974, reelected  
subsequently **other public service** Chairman, Democratic Party of  
Florida, 1966-70 **highlights** One of Florida's Five Outstanding Young  
Men, 1967; National Junior Chamber of Commerce's nominee as  
Outstanding Young Man of America, 1967; DeMolay Legion of Honor;  
Allen Morris Awards: Most Outstanding First-Term Member of the  
Senate, 1976; Most Effective in Debate, 1981 and 1986; Most Effective in  
Committee, 1983 and 1986; Most Respected Senate Member, 1990  
runner-up **military service** U.S. Army, Korea **religious affiliation**  
Presbyterian **recreation** hunting, boating, and fishing **addresses**  
(district) 1821 West Jefferson Street, P. O. Box 598, Quincy 32351  
(Tallahassee) 220 Senate Office Building, 32399-1100 **telephones**  
(district) 904/875-1919 (Tallahassee) 904/487-5004.



## William G. (Bill) Bankhead

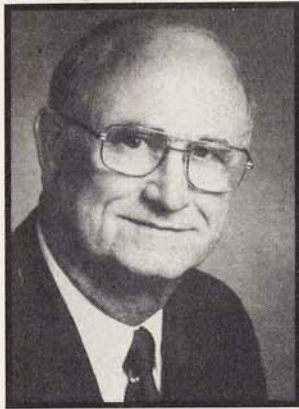
*Republican, District 8*

*Republican Leader*

Manager, CSX Transportation (Real Estate  
Sales Administration) **born** January 15, 1941  
in Americus, Georgia. Moved to Florida in  
1944 **education** Englewood High School,  
1959; University of Florida, B.S., Business  
Administration, 1963 **wife** Diana O'Quinn of

Callahan **children** William G. III, 11 and Diana Brooke, 10 **affiliations**  
member, Alimacani Local School Advisory Council, 1991-92; President,  
Jacksonville Jaycees, 1973-74; Regional Director, Florida Jaycees, 1975-  
76; member, Chamber of Commerce, Board of Governors, 1973-74,  
Skyliner, 1975; President, Civic Round Table, 1976; member, American  
Legislative Exchange Council; member, Freedoms Foundation at Valley  
Forge; President, Saturday Morning Toastmasters, 1977; member, Young  
Republicans, Advisory Board; member, National Republican Legislators  
Association; honorary member, Jacksonville Power Squadron, 1992; life  
member, University of Florida Real Estate Fraternity **legislative service**  
House of Representatives, 1978-88, Minority Whip; elected to the Senate  
in 1988, reelected subsequently **other public service** Mayor's Drug  
Abuse Advisory Council, 1971 **highlights** Charles Dick Medal of Merit  
from the National Guard Association of the United States, 1992; Florida  
Distinguished Service Medal from the National Guard for exceptionally  
meritorious service and support of the Florida National Guard, 1991;  
Duval County Medical Society Legislative Stethoscope Award, 1991;  
1990 "Distinguished Legislator Award" from the Florida Network of  
Youth and Family Services; 1990 Guardian of Small Business Award by  
the National Federation of Independent Businessmen; chosen by the  
Florida Sheriffs Association to receive the 1988 Legislative Award in  
recognition of his introduction and passage of Serious Habitual Juvenile  
Offender Legislation; recognized by the Florida Poison Information  
Center in 1992 for leadership and support in the development of a  
statewide network of poison information centers **military service**  
Florida Army National Guard, 1964-69 **religious affiliation**  
Presbyterian, Deacon **recreation** travel, photography, and government  
**addresses** (district) P. O. Box 41624, Jacksonville 32203-1624  
(Tallahassee) 346 Senate Office Building, 32399-1100 **telephones**  
(district) 904/359-1014 (Tallahassee) 904/487-5030.



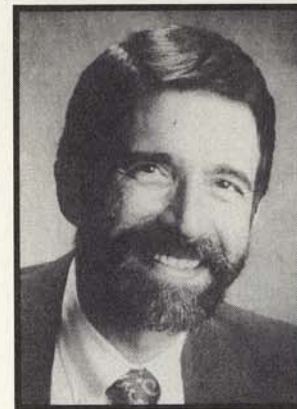


## Malcolm E. Beard

*Republican, District 23*

Senator **born** February 21, 1919 in Moultrie, Georgia. Moved to Florida in 1924 **education** University of Tampa **wife** Mary Ellen Moreau of Oak Hill, West Virginia **children** Thomas Beard and Barbara Mullins **affiliations** Egypt Temple Shrine; Past Director, Royal Order of Jesters Court 89; Past President of the

following: Florida Sheriffs Association; Justice of the Peace Association; Florida FBI National Academy Associates; Tampa Boys Club and Tampa Girls Club **legislative service** House of Representatives, 1978-80; elected to the Senate, March 1980, reelected subsequently **other public service** Sheriff of Hillsborough County, 1965-78; Constable of Hillsborough County, 1957-65; appointed by the Governor to serve as a member of State Governor's Commission on Human Relations; Governor's Commission on Standards and Goals; Supreme Court Advisory Committee on Plea Bargaining, Sentencing and Bail on Appeal; Governor's Task Force on the Correctional System; Interagency Law Enforcement Planning Council Region V Mutual Aid Coordinator **highlights** Governor's Medal; The Silver Medallion Award presented by the National Council of Christians and Jews; Hillsborough County Bar Association, Liberty Bell Award; Black Community Professional Award; Jaycees Award for Good Government **military service** U. S. Navy, World War II **religious affiliation** First Christian Church; served as Deacon **recreation** hunting and fishing **addresses** (district) P. O. Box 3565, Plant City 33564 (Tallahassee) 336 Senate Office Building, 32399-1100 **telephones** (district) 813/653-7767 (Tallahassee) 904/487-5072.



## Jim Boczar

*Democrat, District 24*

Attorney **born** March 28, 1947 in Miami **education** Florida Atlantic University, B.S., 1968; University of Miami Law School, J.D., 1972; Stanford University Law School, Master of Laws, 1979 **wife** Linda Boczar, M.D. of Little Rock, Arkansas **children** Jay, 21; John, 14; Justin, 12; and Drew, 7 **affiliations** Sarasota

County Bar Association; Civic League; League of Women Voters **legislative service** elected to the Senate in 1992 **highlights** Watergate Special Prosecutors Task Force, 1973; Law School Professor: St. Louis University Law School, University of Arkansas Law School **religious affiliation** Unitarian **recreation** skiing and bicycling **addresses** (district) 8484 S. Tamiami Trail, Suite B, Sarasota 34238-2953 (Tallahassee) 319 Senate Office Building, 32399-1100 **telephones** (district) 813/653-7767 (Tallahassee) 904/487-5081.



## Ginny Brown-Waite

*Republican, District 10*

Legislator **born** October 5, 1943 in Albany, New York. Moved to Florida in 1986 **education** State University of New York, B.S., 1976; Russell Sage College, M.S., 1984; Cornell University, Certificate Program, 1980 **husband** Harvey Waite of Albany, New York **children** Jeannine Roxby-Waite, 13; Danene Mitchell

and Lorie Sue Meaders **affiliations** Rotary; B.P.W.; Suncoast MG Club; West Hernando GOP; Board of Directors, Habitat for Humanity; former treasurer, United Way **legislative service** elected to the Senate in 1992 **other public service** Hernando County Commissioner; Legislative Director, New York State Senate **highlights** various community awards for activity and support **religious affiliation** Catholic **recreation** reading and computer work **addresses** (district) 20 North Main Street, County Office Building, Rm. 361, Brooksville 34601 (Tallahassee) 316 Senate Office Building, 32399-1100 **telephones** (district) 904/544-2344 (Tallahassee) 904/487-5040.





## Locke Burt

*Republican, District 16*

Insurance Executive; President, Ormond Re Group, Inc. **born** February 19, 1948 in Des Moines, Iowa. Moved to Florida in 1959 **education** Northwestern University, B.S.B.A., 1969; M.B.A., 1970; Loyola University, J.D., 1974 **wife** Ann E. Snyder of Milwaukee, Wisconsin **children** Melissa, 15 and Thomas, 13 **affiliations** member: The Florida Bar, American Bar Association, Illinois Bar Association, Volusia County Bar Association **legislative service** elected to the Senate, July 31, 1991; reelected in 1992 **other public service** chairman, Local Government Study Commission, 1982-84; member, Citizens Advisory Committee on Fiscal Policy and Productivity, 1991 **highlights** Distinguished Service Award, Florida Association of Domestic Insurance Companies, 1982; Good Government Award, Daytona Beach Jaycees, 1985; Man of the Year, Daytona Beach Chamber of Commerce, 1986 **religious affiliation** Episcopal **recreation** sailing and golf **addresses** (district) 140 S. Atlantic Avenue, Ormond Beach 32176; 838 E. New York Avenue, Suite B, DeLand 32724 (Tallahassee) 240 Senate Office Building, 32399-1100 **telephones** (district) 904/673-7299 or 904/738-9002 (Tallahassee) 904/487-5033.



## Roberto Casas

*Republican, District 39*

Real Estate Broker and Investor **born** April 25, 1931 in Havana, Cuba. Moved to Florida in 1962 **education** Havana Business University, B.A., 1954 **wife** Violeta Colominas of Matanzas, Cuba **affiliations** Hialeah Old Town Optimist Club; Hialeah Athletic Association; Little Havana Activities and Nutrition Centers,

Hialeah Center; Republican Party of Dade County, Outstanding Member; National Republican Congressional Committee; Hialeah-Miami Springs Chamber of Commerce **legislative service** House of Representatives, 1982-88; elected to the Senate in 1988, reelected subsequently **other public service** Secondary Education Planning Commission, 1983; OTB

International Trade Commission; Florida International Affairs Commission, 1990 **highlights** United Teachers of Dade, Tiger Award; South Hialeah Elementary PTA Recognition; Florida League of Cities, Prominent Personality, 1985; Metropolitan Dade County Legislative Appreciation **religious affiliation** Catholic **recreation** hunting and fishing **addresses** (district) 4821 W. 4th Avenue, Hialeah 33012 (Tallahassee) 216 Senate Office Building, 32399-1100 **telephones** (district) 305/827-4040 (Tallahassee) 904/487-5106.



## W. D. Childers

*Democrat, District 1*

*Dean of the Senate*

Businessman **born** November 25, 1933 in Okaloosa County **education** Florida State University, B.S., 1955 **wife** Ruth A. Johnson of Wakeeney, Kansas **children** Gail, Jeanna, Karen, and Marvel; grandchildren Mandy, Jamie, Max, Hailey and Bradley **affiliations** Lions Club; Farm Bureau; Masonic Lodge #348 **legislative service** elected to the Senate in 1970, reelected subsequently; President 1980-82; Dean of the Senate **highlights** Former school teacher prior to going into business; Dean of the Senate; Allen Morris Awards: Most Effective in Debate, three times; Most Effective in Committee, two times, and runner-up, one time; Most Effective Member of the Senate, one time; Florida State University and the Florida State University Alumni Association recognition of Outstanding Professional and Public Service Achievements; Senate Resolution commending Senator Childers and urging him to remain in the Florida Senate; Florida Blue Key Honorary Membership; University of West Florida Government Award for Outstanding Leadership and Service; Distinguished Service Award for representing the interests of Northwest Florida in the Florida Legislature; Florida Jaycees Governmental Affairs Appreciation Award; Unified Sportsmen Service Award, several years **religious affiliation** Baptist **recreation** fishing, hunting, and camping **addresses** (district) 2889 Michigan Avenue, Pensacola 32526 (Tallahassee) 205 Senate Office Building, 32399-1100 **telephones** (district) 904/944-3900 (Tallahassee) 904/487-5000.

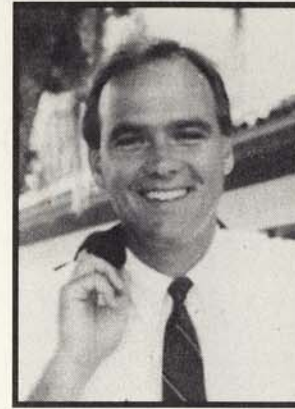




## Charlie Crist

*Republican, District 20*

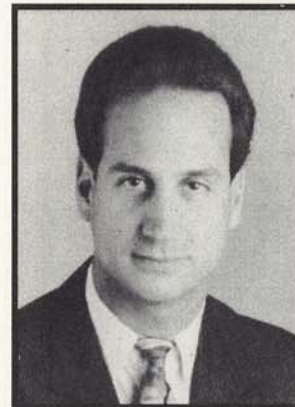
Attorney; Senator **born** July 24, 1956 in Altoona, Pennsylvania. Moved to Florida in 1960 **education** Wake Forest University, 1974-76: quarterback, football team; Athletic Advisory Council for Athletic Director; Florida State University, B.S., Government, 1978: Garnet and Gold Key Member; Student Body Vice-President; Phi Kappa Alpha; Cumberland School of Law, J.D., 1981: Phi Delta Phi Legal Fraternity, President; Junior Class President; Writer, *Pro Confesso*; Senior Class President, St. Petersburg High School **affiliations** member, Board of Directors, Suncoast Tiger Bay Club; former member, Board of Directors, St. Petersburg Rotary Club and Police Athletic League; St. Petersburg Chamber of Commerce; Hillsborough and Pinellas County Bar Associations; The Florida Bar Ethics Committee; Board of Governors, Republican National Lawyers Association; Pinellas County Republican Executive Committee; Administrative Board, First United Methodist Church; member: FSU Boosters; Florida Conservation Association; Suncoasters Civic Club; Board of Directors of Operation PAR; American Lung Association Presidents Council **legislative service** elected to the Senate in 1992 **other public service** U. S. Senator Connie Mack's State Director; Chairman, Senator Mack's Baseball Anti-Trust Advisory Committee; served as youngest member of Senator Mack's Federal Judicial Advisory Commission **highlights** Outstanding Young Man of America; Leadership St. Petersburg Graduate; St. Petersburg Chamber of Commerce; Tiger Bay of Tampa True Grit Award; Major League Baseball Phil Piton Award for Service; Former General Counsel, National Association of Professional Baseball Leagues **religious affiliation** Methodist **recreation** water skiing, reading, and jogging **addresses** (district) 360 Central Avenue, Suite 1210, St. Petersburg 33701 (Tallahassee) 304 Senate Office Building, 32399-1100 **telephones** (district) 813/893-5463 (Tallahassee) 904/487-5075.



## Rick Dantzler

*Democrat, District 17*

Lawyer, Businessperson **born** January 6, 1956 in Fort Leonard Wood, Missouri. Moved to Florida in 1956 **education** University of Florida, B.A., 1978; J.D., 1981; Florida Blue Key **wife** Julie Pope of Winter Haven **children** Elizabeth, 6; Margaret, 2 **affiliations** The Florida Bar; Winter Haven Board of Realtors **legislative service** House of Representatives, 1982-90; elected to the Senate in 1990, reelected in 1992 **highlights** Legislator of the Year, Florida Alcohol and Drug Abuse Association, 1986; Legislator of the Year, Florida Farm Bureau, 1987 and 1991; Legislative Conservation Award, Florida Conservation Association, 1989, 1990 and 1991; Quality Floridian, Florida League of Cities, 1990; ranked first in Senate by Associated Industries for 1991 session; Legislator of the Year, Florida Fruit and Vegetable Association, 1991; Florida Sentencing Commission, appointed Senate member, 1992 **religious affiliation** Presbyterian **recreation** sports and outdoor activities; hunting and fishing **addresses** (district) P. O. Box 9225, Winter Haven 33883-9225 (Tallahassee) 200 Senate Office Building, 32399-1100 **telephones** (district) 813/294-2876 (Tallahassee) 904/487-5044.



## Mario Diaz-Balart

*Republican, District 37*

Business Development Coordinator - Downtown Development Authority **born** September 25, 1961 in Fort Lauderdale **education** University of South Florida **affiliations** Westchester Lions Club; South Florida Young Republicans, past vice president; former member, Elderly Services Advisory Council; Special Olympics Florida Board of Directors, volunteer member; member: Spanish American League Against Discrimination (S.A.L.A.D.); Republican National Committee's Hispanic Advisory Board; NALEO (National Association of Latino Elected Officials), Asociacion Integral Mambisa **legislative service** House of Representatives, 1988-



92; elected to the Senate in 1992 **other public service** Miami Mayor Xavier Suarez's Administrative Assistant three years; appointed by Speaker to International Trade and Investment Council, 1990; Consultive Committee of Children's First Member; National Human Rights Commission of the "Municipios de Cuba en el Exilio" Advisor **highlights** 1992 S.A.L.A.D. Public Service Award; Florida Association of Community Colleges Award; Metro Dade Legislative Award, 1989; Khoury League International Award, 1990 **historical** Rafael Diaz-Balart, grandfather, elected to Cuban House of Representatives in 1936. Juan Caballero, uncle, elected to Cuban House of Representatives in 1954. Rafael L. Diaz-Balart, father, Majority Leader of Cuban House of Representatives 1954-58 and elected to Cuban Senate in 1958. Rafael L. Diaz-Balart is currently the Economic and Commercial Advisor to the President of Costa Rica. Lincoln Diaz-Balart, brother, served in the Florida House of Representatives from 1986-89 and served in the Florida Senate from 1989-92; elected to the U. S. Congress, September 1992, Congressional District 21 **religious affiliation** Catholic **recreation** reading, biking, and diving **addresses** (district) 8890 Coral Way, Suite 215, Miami 33165 (Tallahassee) 334 Senate Office Building, 32399-1100 **telephones** (district) 305/227-7690 (Tallahassee) 904/487-5130.



Fred R. Dudley

Republican, District 25

Attorney **born** November 8, 1944 in Fort Myers **education** University of South Florida, B.A., 1965; President, Interfraternal Council; Stetson University College of Law, J.D., 1968; Dean's List **wife** Linda L. Anderson of Cumberland, Maryland **children** Charlie, Chris, Jimmy, and Scott, 15 **affiliations**

Tropical Lodge #56, Masons; Araba Shrine Temple **legislative service** House of Representatives, 1982-86; elected to the Senate in 1986, reelected subsequently **other public service** Municipal Judge, City of Cape Coral; Planning and Zoning Commissioner, City of Cape Coral; Chairman, Board of Trustees, Cape Coral Hospital; President, Cape Coral Chamber of Commerce **highlights** Allen Morris Award: Most Promising First Termer, 1986; Board Certified, The Florida Bar: Probate and Estate Planning; Fellow, American College of Trust and Estate Counsel **religious affiliation** Episcopal **recreation** music (guitar) and book collecting **addresses** (district) 1708 Cape Coral Parkway, Cape Coral 33904 (Tallahassee) 313 Senate Office Building, 32399-1100 **telephones** (district) 813/542-1324 (Tallahassee) 904/487-5124.

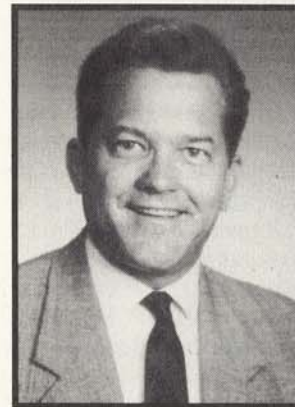


John H. (Buddy) Dyer, Jr.

Democrat, District 14

Attorney **born** August 7, 1958 in Orlando **education** Brown University, Sc.B. Civil Engineering, 1980; University of Florida College of Law, J.D., 1987; Order of the Coif, Florida Blue Key; Editor-in-Chief, *University of Florida Law Review*, 1987; member, Custer Bedell American Inn of Court, 1986-87 **wife**

Karen Caudill of West Palm Beach **child** John Hugh III (Trey), 2 **affiliations** Orange County Bar Association; The Florida Bar; American Bar Association; Florida Engineering Society; Board of Directors, Young Lawyers Section of Orange County Bar; Board of Directors, Young Lawyers Section of The Florida Bar; Florida Lawyers Association for the Maintenance of Excellence **legislative service** elected to the Senate in 1992 **religious affiliation** Presbyterian **recreation** fly fishing and jogging **addresses** (district) P. O. Box 1031, Orlando 33904 (Tallahassee) 254 Senate Office Building, 32399-1100 **telephones** (district) 407/872-2200 (Tallahassee) 904/487-5190.



Mark A. Foley

Republican, District 35

Realtor **born** September 8, 1954 in Newton, Massachusetts. Moved to Florida in 1957 **education** Palm Beach Community College, 1973-75 **affiliations** Gulfstream Goodwill Industries, Chairman; Palm Beach Regional Hospital, Chairman; Central County Council of Realtors, Past President; Realtors

Congressional Contact Committee; Lake Worth Chamber of Commerce, Past President; Lantana Chamber of Commerce; Boynton Beach Chamber of Commerce; Special Olympics Volunteer **legislative service** House of Representatives, 1990-92; elected to the Senate in 1992 **other public service** City of Lake Worth, Commissioner; City of Lake Worth, Vice-Mayor, 1982 **highlights** Voter's Coalition, Most Promising Newcomer, 1991; Price Waterhouse-South Florida *Business Journal* UP & COMERS Award, 1990; Jaycees, Outstanding Young Floridian, 1987



**historical** Edward J. Foley, Jr., father, South Lake Worth Inlet Commissioner, 1980-92 **religious affiliation** Catholic **recreation** travel, snow and water sports, athletics, and community service **addresses** (district) 2324 S. Congress Avenue, Suite 2-A, West Palm Beach 33406 (Tallahassee) 318 Senate Office Building, 32399-1100 **telephones** (district) 407/433-2668 (Tallahassee) 904/487-5356.



Howard C. Forman

*Democrat, District 32*

Marketing Consultant **born** January 6, 1946 in Pittsburgh, Pennsylvania. Moved to Florida in 1955 **education** Miami-Dade Community College; University of Miami; New York Institute of Finance **wife** Susan Schwartzman of Charleston, South Carolina **children** Iris and Rosette Forman; stepchildren, Todd and Michelle Stone **affiliations** Broward Lodge No. 300, Free and Accepted Masons; Mahi Shrine Temple; Knights of Pythias, Pembroke Pines Lodge No. 216; Bernard Baruch B'nai B'rith Unit; several Democratic clubs **legislative service** elected to the Senate in 1988, reelected subsequently; Chairman, Broward County Delegation, 1990 **other public service** Hallandale City Commission, 1973-76; Broward County Commission, 1976-88, Chairman, 1979-80, 1986-87, Vice-Chairman, 1978-79, 1985-86; South Florida Regional Planning Council, 1977-85; Mental Health Board, 1977-80, Chairman of MPO, 1982-84; Chairman, Broward Employment Training Agency (BETA), 1980-85; Broward Representative to Dade County Sports Authority, 1982; State Job Training Coordinating Council, 1983-84; NACO Steering Employment Committee, 1984; Chairman Broward County Expressway Authority, 1987-88; National Conference of State Legislatures Task Force for Developmental Disabilities, 1990 **highlights** Early Childhood Development Association, 1986; Allen Morris Award: Most Promising First Termer (runner-up), Florida Times-Union Poll, 1990; Florida School Boards Association, 67 Award, 1990 and 1991; Florida Association of School Administrators, Raymond B. Stewart Gavel of Authority Award, 1991; Florida Audubon Society, Legislative Excellence Award, 1992 **religious affiliation** Jewish **recreation** reading, bicycling, and swimming **addresses** (district) 4000 Hollywood Boulevard, Suite 340-N, Hollywood 33021-6744 (Tallahassee) 208 Senate Office Building, 32399-1100 **telephones** (district) 305/983-3200 (Tallahassee) 904/487-5103.



John A. Grant, Jr.

*Republican, District 13*

Attorney **born** July 12, 1943 in Tampa **education** University of Florida, 1961-62; University of South Florida, B.A., 1964; Florida State University, Master of Science and Government, 1965; Stetson University, J.D., 1968 **wife** Beverley Code of Tampa **children** John, Jeanette, and James **affiliations** Egypt Temple Shrine; 32nd degree Mason; Tampa Consistory of Scottish Rite; Temple Terrace Masonic Lodge; Florida and American Bar Associations; American Judicature Society; North Tampa Kiwanis Club, past president; University of South Florida Alumni Association, past national president and National Board of Directors; University of South Florida Foundation Board of Directors; Florida State University Alumni Association; Stetson Lawyers Association; United States Small Business Administration Advisory Board, 1973-76 **legislative service** House of Representatives, 1980-86; elected to the Senate in 1986, reelected subsequently **other public service** Lakeland City Manager Assistant, 1964; Florida Senate Administrative Assistant, 1966-67; Assistant State Attorney, 1970-72; Tampa Housing Authority General Counsel, 1972-79; Florida Ethics Commission, 1974-78, Vice Chairman, 1976-78; Chairman of the Board of Trustees, Good Samaritan Hospital, 1976-83 **highlights** Award for support of quality health care for the citizens of Florida, 1987; Freedom Award, Tampa Women for Responsible Legislation, 1987; Outstanding Legislator Award, Unified Sportsmen of Florida, 1987; Crimefighter Award, Florida Department of Law Enforcement, 1988; Florida Mental Health Counselors Association, Advocate of the Year, 1988; D.I. Rainey Legislative Award, Outstanding Contributions to Quality Health Care for the Citizens of Florida **religious affiliation** Baptist **recreation** tennis, travel, and flying **addresses** (district) 1715 N. Westshore Blvd., Suite 257, Tampa 33607 (Tallahassee) 356 Senate Office Building, 32399-1100 **telephones** (district) 813/554-5060 (Tallahassee) 904/487-5068.







## Patricia Grogan

*Democrat, District 18*

Senator **born** September 11, 1962 in Dover, New Jersey. Moved to Florida in 1963 **education** The American University, B.A., 1984; Magna Cum Laude, University Honors, Presidential Scholar; University of Central Florida, M.P.A., 1990 **husband** David Teek of Merritt Island **affiliations** Kiwanis Club; Zonta

(Business and Professional Women's organization); Leadership Brevard **legislative service** elected to the Senate in 1992 **highlights** Chairman, Brevard County Democratic Party, 1988-90; National President, College Young Democrats of America, 1983-84; legislative assistant to Rep. Harry C. Goode, Jr., 1986-92 **addresses** (district) 862 Dixon Boulevard, Cocoa 32922 (Tallahassee) 230 Senate Office Building, 32399-1100 **telephones** (district) 407/690-3259 (Tallahassee) 904/487-5056.



## Alberto (Al) Gutman

*Republican, District 34*

Businessman **born** January 4, 1959 in Havana, Cuba. Moved to Florida in 1965 **education** Miami-Dade Community College, A.A., 1980; University of Miami, B.B.A., 1982; Phi Theta Kappa National Honor Fraternity; Golden Key National Honor Society; Honor Society of Phi Kappa Phi **wife** Marci

Rabinowitz of New York, New York **children** Lauren Samantha, 5 and Ilana Caroline, 4 **affiliations** University of Miami Alumni Association; FIU Alumni Association Honorary Member; B'nai B'rith; Masons; Miami-Roads Civic Association; Young Republicans; Republicans for Environmental Protection, Founding Member; United Way Hispanic Leadership Committee **legislative service** House of Representatives, 1984-92; Joint Committee on Child Abuse; House of Representatives Liaison to the Governor's Commission for a Free Cuba; Founding Chairman of the Cuban-American Caucus of the House of Representatives; elected to the Senate in 1992 **other public service** Florida Seed Capital Board, Advisory Board Member; Dade County

Republican Party Executive Committeeman; United Way Hispanic Leadership Committee, Youth Sub-chairman **highlights** Legislator of the Year Awards: Florida Bingo Association, 1992; International Council of Shopping Centers, 1989; Retail Grocers Association of Florida, 1989; Outstanding Young Men of America; "OTTO" Award, 1992; Community Service Award, National Alliance of American Latins, Community Service Award, Private Industry Council Stay in School Program; Certificate of Appreciation, United States Department of Justice Drug Enforcement Administration; Republican of the Year Award, Dade County Republican Party; Recognition for Outstanding Service, Federal Law Enforcement Officers Association **religious affiliation** Jewish; Temple Beth Shmuel, Beth Chaim Yosef Congregation, Temple Beth David **recreation** fishing and reading **addresses** (district) 300 S. W. 12th Avenue, Suite 326-A, Miami 33130 (Tallahassee) 204 Senate Office Building, 32399-1100 **telephones** (district) 305/541-9090 (Tallahassee) 904/487-5109.



## Robert T. Harden

*Republican, District 7*

Senator **born** July 6, 1960 in Cooperstown, North Dakota. Moved to Florida in 1964 **education** Okaloosa-Walton Junior College, A.A.; Florida State University, B.S.; College Republicans, debate team **affiliations** Fort Walton Beach Kiwanis, Okaloosa County 4-H Advisory Board, United Way Advisory Board,

Restoration Ranch for Children Board of Directors **legislative service** House of Representatives, 1986-92; elected to the Senate in 1992 **highlights** Outstanding Young Men of America, 1981; Cotton, Wesley and Poche Legal Foundation's Peerless Advocate Award, 1986 **religious affiliation** Baptist **recreation** swimming, water sports, and reading **addresses** (district) 11 Racetrack Road, N.E., Executive Park Suite, D-3, Fort Walton Beach 32547 (Tallahassee) 328 Senate Office Building, 32399-1100 **telephones** (district) 904/833-9155 (Tallahassee) 904/487-5009.







## James T. (Jim) Hargrett, Jr.

*Democrat, District 21*

Retail, Real Estate **born** July 31, 1942 in Tampa **education** Morehouse, B.A., 1964; Atlanta University, M.B.A., 1965 **wife** Berlyn Chatard of New Orleans, Louisiana **children** Crystal and James III **affiliations** Moffitt Cancer Center Board of Directors; Florida First Capital Finance Corporation, member;

Hillsborough County National Conference of Christians and Jews, Board of Directors; Greater Tampa Chamber of Commerce; Florida State and Hillsborough County Democratic Executive Committees; Ybor City Chamber of Commerce; Florida Council on Crime and Delinquency; Tampa Bay Performing Arts Center Board of Trustees Alumni Club; Tampa Bay Area Committee on Foreign Relations; University of Tampa Board of Trustees, 1986-89; United Way Florida State Campaign Chairman, 1987; Ybor City Centennial Celebration Committee **legislative service** House of Representatives, 1982-92: Chairman, Employee Management Relations Committee; National Conference of State Legislators; Southern Region Education Board Conference Delegate, 1983; Florida Conference of Black State Legislators, Chairman, 1984-86; National Black Caucus of State Legislators Executive Committee, 1985-86; elected to the Senate in 1992 **other public service** City of Tampa Housing Authority, 1967-71; Hillsborough County Board of Consumer Affairs and Appeals, chairman, 1979-81; Florida Economic Development Advisory Council, 1980-82; City of Tampa Downtown Development Authority, 1979-82; Governor's Advisory Committee on Cable Television; Governor's Advisory Council on Minority Enterprise Development, 1984-85 **highlights** Outstanding Young Man of America, 1975; Florida Legal Services Most Effective Legislator, 1992; Tampa Urban League Award for Meritorious Service in Housing; Bethune-Cookman College Outstanding Contribution to Education and Civic Affairs Award, 1983; Florida Voter League's Leadership Award, 1985; *Who's Who Among Black Americans*, 1986; Tampa Organization of Black Affairs Martin Luther King Memorial Award, 1986; Bethune-Cookman College Distinguished Leadership Award, 1990; Elderly Handicapped and Disadvantaged Citizens Leadership in Transportation Needs Award, 1990; Florida Consumer Action Network Award for Tireless Leadership on Affordable Housing Issues, 1991 **military service** U.S. Army Reserve 1965-71 **religious affiliation** Protestant **recreation** fishing **addresses** (district) P. O. Box 11025, Tampa 33680 (Tallahassee) 330 Senate Office Building, 32399-1100 **telephones** (district) 813/272-2990 (Tallahassee) 904/487-5059.



## Betty S. Holzendorf

*Democrat, District 2*

Educator; Administrator **born** April 5, 1939 in Jacksonville **education** Edward Waters College, B.S., 1965; Atlanta University, M.A., 1971; University of North Florida, M.Ed., Adm., 1973; Honor Society Hall of Fame **husband** King Holzendorf, Jr. of Jacksonville **children** Kim V. Lockley, King L. III, Kevin J.

and Kessler L. **affiliations** National Conference of State Legislators; Florida Conference of Black State Legislators; Alpha Kappa Alpha; National Council of Negro Women, life member; National Conference of Black State Legislators; Jacksonville Chamber of Commerce; Northside Businessmen Club; N.A.A.C.P. **legislative service** House of Representatives, 1988-92; elected to the Senate in 1992 **other public service** Jacksonville AA/EED officer, 1975-79; Jacksonville Community liaison officer, 1979-81; Affirmative Action/EEO Officer; Legislative Liaison; Aide to Mayor, City of Jacksonville; EEO Specialist, Department of Transportation **highlights** National Council of Negro Women Appreciation Award, 1988; Jacksonville Chamber of Commerce Government Service Award, 1989; Florida A&M Bold City Classic Award, 1989; Outstanding Contribution Jacksonville Job Corps, 1990; Distinguished Leadership in the Florida Legislature, 1990; Bethune-Cookman College, Distinguished Leadership in the Florida Legislature, 1990; Florida A&M University, President's Award, 1990; *Who's Who Among American Education*, 1972; *Who's Who Among Black Americans*, 1985; *Who's Who of American Women*, 1990 **religious affiliation** African Methodist Episcopal (A.M.E.) **recreation** reading and collecting pennies **addresses** (district) 5045 Soutel Drive, Suite 60, Jacksonville 32208 (Tallahassee) 242 Senate Office Building, 32399-1100 **telephones** (district) 904/765-5610 (Tallahassee) 904/487-5024.







## Kenneth C. (Ken) Jenne II

*Democrat, District 29*

Attorney **born** December 1, 1946 in New Haven, Connecticut. Moved to Florida in 1956 **education** Palm Beach Junior College, A.A., 1966; Florida Atlantic University, B.A., 1968; Florida State University, J.D., 1972; Fort Lauderdale College honorary Doctor of Humane Letters, 1978; Southeastern

University honorary Doctor of Laws, 1986; Phi Alpha Delta International, Pi Sigma Alpha, Sigma Phi Epsilon, Pi Alpha Alpha, Phi Rho Pi **wife** Caroline Maslanka of St. Petersburg Beach **children** Evan Boyd and Sarah Elizabeth Anne **affiliations** St. Thomas of Villanova University Board of Trustees; Community Service Council Board of Directors; South Florida American Red Cross Board of Directors; National District Attorneys, former member; Florida Prosecuting Attorneys Association, former member; American, Florida, and Broward Bar Associations **legislative service** elected to the Senate, 1978-88; reelected to the Senate in 1990, reelected subsequently; Rules and Calendar Committee Chairman; Judiciary Committee Chairman; Executive Business Committee Chairman; Finance and Tax Committee Chairman; Select Committee on Hurricane Relief and Disaster Preparedness; Broward County Legislative Delegation Chairman, 1992-93 **other public service** Broward County Charter Commission, Executive Director, 1974; Broward County Commission, 1975-78, Chairman, 1976-77; Assistant State Attorney; Governor's Council on Organized Crime **highlights** Human Services Advocates of Broward County, Legislator of the Year, 1982; National Jewish Hospital/National Asthma Center Humanitarian Award, 1983; Allen Morris Awards: Most Effective Member of the Senate, 1984, 1986, 1987, and runner-up, 1985; Florida Pediatric Society Samuel P. Bell III, Outstanding Legislator Award, 1985; Broward County Commission Leadership Award, 1985; Children's Home Society Legislative Award 1986; Florida Consumer Federation Leadership Award, 1986; Hollywood Democratic Club Democrat of the Year, 1987; Young Democrats Club Democrat of the Year, 1988; Hollywood Civitan Club Citizen of the Year; Environmental Coalition Environmentalist of the Year, 1988; American Jewish Committee Learned Hand Award, 1989; American Automobile Association of Florida, Legislator of the Year, 1992 **military service** U.S. Army Reserve **religious affiliation** Episcopal **addresses** (district) 612 S. E. 5th Avenue, Suite 3, Ft. Lauderdale 33301 (Tallahassee) 211 Senate Office Building, 32399-1100 **telephones** (district) 305/467-4332 (Tallahassee) 904/487-5097.



## Toni Jennings

*Republican, District 9*

Construction, Realtor **born** May 17, 1949 in Orlando **education** Wesleyan College, B.A., 1971; Rollins College, 1972; Phi Kappa Phi, Kappa Delta Epsilon, Mortar Board, Honor Court **affiliations** Orlando Area Board of Realtors; Associated Builders and Contractors; Central Florida Builders Exchange; Delta

Kappa Gamma Society International; Salvation Army Advisory Board; Orlando Museum of Art; Valencia Community College **legislative service** House of Representatives, 1976-80; elected to the Senate in 1980, reelected subsequently; Senate Republican Leader, 1984 and 1986-88; Republican Leader Pro Tempore, 1982-83 and 1985-86; Orange County Legislative Delegation Chairman, 1980-82 and 1985-86, 1991-92; Seminole County Legislative Delegation, Chairman, 1990-91, 1991-92 **highlights** National Associated Builders and Contractors, Distinguished Service Award; Florida Chamber of Commerce, Award for Economic Development; National Federation of Independent Business, Florida Guardian of Small Business Award; National Republican Legislators Association, 2nd Annual "Frank J. Fahrenkopf, Jr., Award," Outstanding State Minority Leader; Missing Children Help Center, Tampa Chapter, Outstanding Efforts for the "Voice of the Missing Child" **historical** Jack Jennings, father, Orange County School Board Chairman. Charles H. Jennings, great-grandfather, was a member of Virginia Legislature. General Edward Martin, great-uncle, Governor of Pennsylvania **religious affiliation** Episcopal **recreation** bicycling **addresses** (district) 1042 Wilfred Drive, Orlando 32803-2571 (Tallahassee) 322 Senate Office Building, 32399-1100 **telephones** (district) 407/898-1861 (Tallahassee) 904/487-5050.





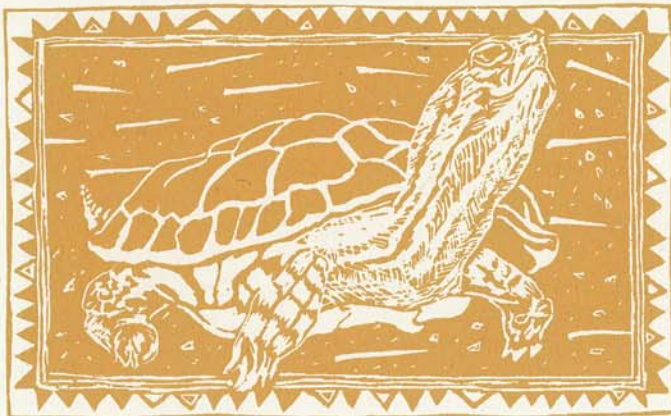


## Karen Johnson

*Democrat, District 11*

Senator **born** November 16, 1943 in Pittsburgh, Pennsylvania. Moved to Florida in 1958 **husband** Ray Johnson **children** Greg, 27; Terri, 25; and Connie, 22; grandchildren Kendra, 3; Shawn, 1; Johnathan Ray and Alyssa Ann, twins, 4 months **affiliations** Chamber of Commerce; Altrusa International,

past president **legislative service** elected to the Senate in 1992 **other public service** Elected to Citrus County School Board, 1982; reelected in 1986 and 1990; Drug Free Council; Family Resource Center Board of Directors; Adult Abuse Advisory Council; Key Training Center for Adult Mentally Handicapped; Marion, Citrus Mental Health Board; Healthy Start Regional Board representing Citrus, Hernando, Lake and Sumter Counties; Formed "Summer Scholarships" **highlights** Inverness Elks Lodge #2522 Achievement Award; Florida Congress of Parents and Teachers, Honorary Life Membership for Outstanding Service to Children and Youth; Pre-kindergarten Early Intervention Program in appreciation of unselfish dedication to children; Pat Spangler Award **religious affiliation** Lutheran **recreation** boating, snow skiing, and dancing **addresses** (district) P. O. Box 490557, Sun Bank Bldg., 2nd Floor, 900 N. 14th St., Leesburg 34749-0557; One Courthouse Square, Inverness 34452 (Tallahassee) 317 Senate Office Building, 32399-1100 **telephones** (district) 904/360-6670 or 904/637-9990 (Tallahassee) 904/487-5014.



## Daryl L. Jones

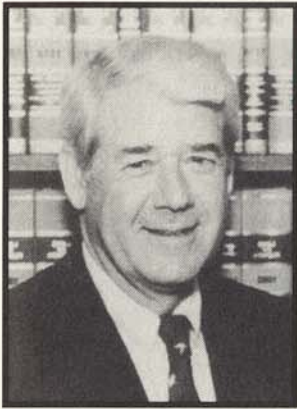
*Democrat, District 40*

Attorney **born** May 31, 1955 in Jackson, Mississippi. Moved to Florida in 1981 **education** United States Air Force Academy: B.S., Math, with honors, 1977; USAFA Cadet Vice Wing Commander; middleweight boxing champion; University of Miami School of Law, J.D., cum laude, 1987; President: Student Bar

Association; National Student Bar Association; Valedictorian, Lanier High School, Jackson, Mississippi **wife** Myoushi Carter of Birmingham, Alabama **children** Derek L., 10; Durel L., 7; Michele E., 4 **affiliations** Attorney/Coach, 1990 Dade County High School Mock Trial Champions, Miami Central High School; member: Black Lawyers' Association, Miami Chapter; Orange Bowl Committee; Board of Directors, Zoological Society of Florida; The American Legion **legislative service** House of Representatives, 1990-92; elected to the Senate in 1992 **other public service** Dade County Attorney's Office, Aviation Division, 1988-90; Federal Judicial Clerk, Judge Peter T. Fav, 11th Circuit Court of Appeals, 1987-88 **highlights** Midwives Association of Florida, Legislator of the Year, 1992; Most Effective Freshman Representative, *Miami Herald*, 1991; First Term Legislator of the Year, Florida School Boards Association, 1991; Outstanding Freshman Representative for Diligent Efforts on Behalf of Consumers' Rights and the Administration of Justice, The Academy of Florida Trial Lawyers; 1991 Toll Fellow, Class of 1991, The Council of State Governments **military service** United States Air Force, 1977-84, F-4 Phantom Pilot; 1988-89 Puerto Rico Air National Guard-A-7D Corsair II Pilot; 1989-present, USAF Reserves F-16 pilot **religious affiliation** Lector and member, Christ the King Catholic Church **recreation** all sports **addresses** (district) 9300 S. Dadeland Boulevard, Suite 401, Miami 33156 (Tallahassee) 212 Senate Office Building, 32399-1100 **telephones** (district) 305/442-6901 (Tallahassee) 904/487-5127.







## George Grier Kirkpatrick, Jr.

*Democrat, District 5*

Real Estate, Investments **born** December 24, 1938 in Gainesville **education** Davidson College, B.S., Psychology, 1962 **wife** Monika Godzewski of West Berlin, Germany **children** Catherine Grace and George Grier III **affiliations** University of Florida, College of Health Related Professions Board of Advisors;

Columbus Hemispheric Trade Commission; Home Builders Association of Gainesville, past president; Florida Home Builders Association, past area Vice-President and Director; past President, United States, Florida, Lafayette County and Putnam County Chambers of Commerce; Gainesville Chamber of Commerce: past Director and Vice-President for Economic Development **legislative service** elected to the Senate in 1980, reelected subsequently **highlights** Preservation 2000 Leadership Award, 1992; Florida Association of Community Colleges Legislative Service Award, 1991; Florida Distinguished Service Medal Award, 1991; Florida Army National Guard Officer's Association Award for Dedicated Service in the Senate, 1989; Florida Student Association Outstanding Legislator Award, several years; Sierra Club Legislative Award, 1986; Florida Regional Councils Association Award for Major Growth Management Acts, 1986; Florida Chamber of Commerce Award for Outstanding Contributions to Economic Development in Florida, 1986; Allen Morris Awards: Most Effective First-Term Senator, runner-up 1982; Most Effective in Committee, 1985, 1986 and 1987; *Who's Who in the South and Southwest*, 1984; University of Florida Service Award **military service** U.S. Army, 1st Lieutenant Military Police Corps, West Berlin, Germany 1962-64 **religious affiliation** Presbyterian **recreation** hunting, fishing, golfing, travel, enology, and origami **addresses** (district) 1103 N.W. 13th Street, Gainesville 32601 (Tallahassee) 252 Senate Office Building, 32399-1100 **telephones** (district) 904/377-3800 (Tallahassee) 904/487-5020.



## S. Curtis (Curt) Kiser

*Republican, District 19*

Attorney **born** June 17, 1944 in Oskaloosa, Iowa. Moved to Florida in 1967 **education** University of Iowa, B.A., 1967; Florida State University, J.D., 1970, Phi Delta Phi Legal Fraternity **wife** Sara M. "Sally" Hess of Rochester, New York **children** Jennifer Lynn and Kevin Curtis **affiliations** Palm Harbor

Chamber of Commerce; Palm Harbor Youth Recreation League Board of Directors; Clearwater and Tarpon Springs Republican Clubs; American, Florida, and Clearwater Bar Associations; Indian Bluff Island Civic Association President, 1972-73; Florida State University Law School Alumni Board of Directors **legislative service** House of Representatives, 1972-82; Pinellas Legislative Delegation Chairman, 1976-77 and 1987-88; Minority Leader, 1978-82; Public Service Commission Nominating Council, 1978-90; Joint Committee on Administrative Procedures Chairman, 1979-80 and 1988; National Conference of State Legislatures Committee on Fiscal Affairs and Oversight Chairman, 1978-79; National Conference of State Legislatures Governmental Operations Vice Chairman, 1988; Assembly on the Legislature, Chairman, 1979-81; elected to the Senate in 1984, reelected subsequently **other public service** Assistant Legal Counsel to Governor Kirk, 1970; Department of Community Affairs Advisory Council, 1971; Pinellas County Bi-Racial Committee, 1971; Dunedin Associate Municipal Judge, 1972; Governor's Commission on Property Rights, 1974; Marketable Record Title Act Study Commission; Supreme Court Study Commission on Restructuring the Courts; Motor Vehicles Emissions Study Commission Chairman, 1988; Electoral College Member, 1980; Columbus Hemispheric Commission Chairman, 1990; Mobile Home Study Commission, Chairman, 1989-90; Pepper Commission Chairman **highlights** FTP-NEA Friend of Education Award; Florida Conservation Award, 1988, 1989, 1990, 1992; 1992 Preservation 2000 Leadership Award; Florida Health Care Association Legislator of the Year Award, 1992; First Chairman of the Claude Pepper Commission on Aging **historical** Ira Kiser, father, served 12 years as an Alderman for the City of Davenport, Iowa. Jean Kiser, mother, former member of Iowa Legislature **religious affiliation** Presbyterian **recreation** hunting, swimming, fishing, and diving **addresses** (district) 1968 Bayshore Boulevard, Dunedin 34698 (Tallahassee) 300 Senate Office Building, 32399-1100 **telephones** (district) 813/733-1700 (Tallahassee) 904/487-5062.



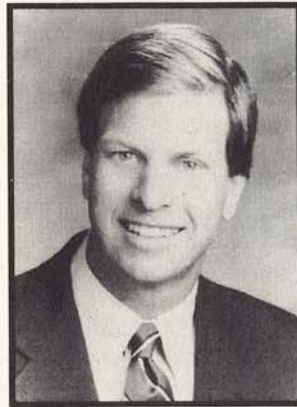


## Patsy Ann Kurth

*Democrat, District 15*

Real Estate Broker **born** February 2, 1941 in Washington, Missouri. Moved to Florida in 1960 **education** Southwest Missouri State Teachers College; Brevard Community College **husband** Alan "Al" Kurth of New Jersey **children** Dawn (deceased), Wendy, Martha, and Sara **affiliations** South Brevard

Democratic Women's Club, League of Women Voters **legislative service** elected to the Senate in 1990, reelected subsequently **other public service** Brevard County Planning and Zoning Board; Planning and Zoning Board for the Town of Malabar **highlights** East Central Florida Memory Disorder Clinic Sustained Support Award, 1992; Florida Chamber of Commerce Award for Leadership in Passage of Enterprise Florida, 1992; Mothers Against Drunk Driving Appreciation Award, 1992 **religious affiliation** Methodist **recreation** fishing, walking, quilting, and antique collecting **addresses** (district) 2174 Harris Avenue, N.E., Suite 1-B, Palm Bay 32905 (Tallahassee) 258 Senate Office Building, 32399-1100 **telephones** (district) 407/984-4951 (Tallahassee) 904/487-5053.



## John M. McKay

*Republican, District 26*

Real Estate Broker, Mortgage Broker **born** September 23, 1948 in Winter Haven **education** Florida State University, B.S., 1972 **wife** Deborah D. Dye of Bradenton **children** Mary Patricia, Sara Jane, and Meredith **affiliations** Chairman, Bradenton Downtown Development Authority, 1989-90; Chairman,

Bradenton Community Redevelopment Agency, 1989-90; Board of Directors, Habitat for Humanity, 1989-90; member: Chamber of Commerce, Kiwanis Club **legislative service** elected to the Senate in 1990, reelected subsequently **other public service** Aide to Senator Lawton M. Chiles, Jr., 1969; legislative aide, House of Representatives Education Committee, 1970-71; legislative intern, House of Representatives, Education Committee, 1971-72 **historical** Dewey Dye,

Sr., wife's grandfather, Florida Senate President pro tempore 1939-41. D. B. McKay, great-uncle, Mayor of Tampa for 16 years in the early 1900's. Mitchell F. McKay, grandfather, Clerk of the Criminal Court in Tampa 1908-10, Deputy Clerk of Circuit Court 1924-28 **military service** Army National Guard and U.S. Army Reserve, 1969-75, honorable discharge **religious affiliation** First Presbyterian Church of Bradenton, Elder **recreation** golf and sailing **addresses** (district) 2424 Manatee Avenue, West, Suite 101, Bradenton 34205 (Tallahassee) 324 Senate Office Building, 32399-1100 **telephones** (district) 813/741-3099 (Tallahassee) 904/487-5078.



## Matthew Meadows

*Democrat, District 30*

Curriculum Supervisor, School Board of Broward County **born** September 5, 1938 in Ft. Pierce **education** Bethune-Cookman College, 1961; President of Student Government Association; President, Kappa Alpha Psi; graduate studies: University of Massachusetts and Nova University; graduate

seminars: University of New Hampshire, Harvard University **wife** Charley Mae Harris of Macon, Georgia **children** Matthew, Felicia, Debbie, Tommy and Priscilla **legislative service** elected to the Senate in 1992 **other public service** consultant: State Department of Education, Florida Right to Read Sessions **highlights** *Who's Who Among American Colleges and Universities* **religious affiliation** Baptist **recreation** bowling and fishing **addresses** (district) 800 West Oakland Park Boulevard, Suite 308, Ft. Lauderdale 33311 (Tallahassee) 224 Senate Office Building, 32399-1100 **telephones** (district) 305/467-4600 (Tallahassee) 904/487-5112.







## William G. (Doc) Myers, M.D.

*Republican, District 27*

Physician **born** September 28, 1930 in Kittanning, Pennsylvania. Moved to Florida in 1961 **education** University of Pittsburgh: B.S., 1952, M.D., 1956; Rotating internship Southside Hospital, Pittsburgh, 1957; internal medicine residency, 1958; Pi Kappa Alpha; Football 1, 2, 3; Nu Sigma honorary; Pitt Players; Alpha Omega Alpha honorary; Nu Sigma Nu **wife** Carol Anne Edgar of Washington, Pennsylvania **children** Jacqueline Jolane Means, William George, Jr., Bradley Stephen, Brian Jeffry, Barry Douglas, and Jennifer Sue **affiliations** Knights of Pythias, past member; Elks; Martin County Medical Society; American, Florida, and Southern Medical Associations **legislative service** House of Representatives, 1978-82; elected to the Senate in 1982, reelected subsequently; Republican Whip, 1984-86; Joint Advisory Council on Intergovernmental Relations Committee, member; Health and Rehabilitative Services Committee Chairman, 1986-88; Republican Leader Pro Tempore, 1986-88; Republican Leader, 1988-90 **other public service** Martin County Commissioner Chairman, 1968-72 and 1976-78; Health and Rehabilitative Services Department District IX Advisory Council Chairman, 1977-78; Health Planning Council, 1977-78; Treasure Coast Regional Planning 1976-78 **highlights** University of Pittsburgh James Heard Prize Medicine Award, 1952; S.O.D.A. (Stamp Out Drug Abuse) Martin County Founder 1970; Allen Morris Awards: Most Effective in Debate Award, runner-up 1986; Most Effective Freshman Senator, runner-up; and Most Respected Senator, 1990 **religious affiliation** Methodist **recreation** tennis, racquetball, and squash **addresses** (district) 50 Kindred St., Suite 301, Stuart 34994 (Tallahassee) 342 Senate Office Building, 32399-1100 **telephones** (district) 407/283-3133 (Tallahassee) 904/487-5088.



## James A. (Jim) Scott

*Republican, District 31*

Attorney **born** January 14, 1942 in Pikeville, Kentucky. Moved to Florida in 1966 **education** University of Kentucky, B.A., 1963; J.D., 1965, Sigma Nu, Debate and Discussion Team, Phi Alpha Delta Law Fraternity **wife** Janice Ann Suskey of Miami **children** Frank and Stacy Ann **affiliations** Florida, Kentucky and American Bar Associations; Broward County and South Palm Beach County Bar Associations; Ft. Lauderdale Chamber of Commerce; University of Kentucky Law Alumni Association; Boca Raton Chamber of Commerce **legislative service** elected to the Senate in 1976, reelected subsequently; Minority Floor Leader, 1978-80 and Minority Leader, 1980-82; chairman, Appropriations Committee, 1986-88; chairman, Rules and Calendar Committee, 1989-90 **other public service** Associate Municipal Judge in Deerfield Beach, 1972; Broward Legislative Delegation Attorney, 1972-74; prosecutor in Deerfield Beach, 1973-76; Legal Aid Service of Broward County Board of Directors and Treasurer, 1974-76 **highlights** Allen Morris Awards: Most Effective First Term Member of Senate, 1978; Most Effective in Debate, runner-up, 1980-82; Most Effective Member of the Senate, 1990; Honorary Doctorate from Fort Lauderdale College; Community Service Council's Distinguished Service Award; Anti-Defamation League, "Torch of Liberty," Award, 1985; Retarded Citizens of Broward County Legislator of the Year, 1987; Republican choice for Senate President-Designate, 1989; National Republican Legislator of the Year Award, 1990; Legislative Excellence Awards: Audubon Society, 1990 and 1992 **military service** U.S. Coast Guard **religious affiliation** Presbyterian **recreation** golf, horses, and riding **addresses** (district) 2000 East Oakland Park Boulevard, Ft. Lauderdale 33306-1195 (Tallahassee) 308 Senate Office Building, 32399-1100 **telephones** (district) 305/566-8600 (Tallahassee) 904/487-5100.





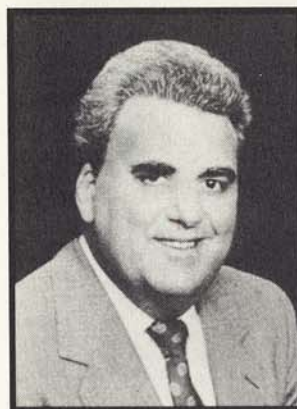


## Gary Siegel

*Republican, District 12*

Attorney **born** June 26, 1949 in New York, New York. Moved to Florida in 1976 **education** University of Miami, B.A., 1971; Memphis State University, J.D., 1974; Georgetown University, Master of Laws, 1976 **wife** Carol Rooney of Kissimmee **children** Caitlin, 9; Erin, 6; Derek, 3 **affiliations** Seminole County Bar

Association, Secretary and Director; past member, Florida Jaycees; member, Seminole County Law Library Board of Directors; Grievance Committee, 18th Judicial Circuit; Counsel, United States District Court, Middle District; Court appointed counsel, United States Court of Appeals, 11th Circuit; Special Public Defender, 9th and 18th Judicial Circuits. Admitted to practice before: United States Supreme Court; United States Tax Court; United States Court of Claims; United States Courts of Appeal, 5th and 11th Circuits; United States District Court, Middle District of Florida **legislative service** Elected to the Senate in 1992 **other public service** Assistant County Attorney, Seminole County, 1976-78 **religious affiliation** Jewish **recreation** family, jogging, swimming, and basketball **addresses** (district) 801 Douglas Avenue, Altamonte Springs 32714 (Tallahassee) 312 Senate Office Building, 32399-1100 **telephones** (district) 407/682-6777 (Tallahassee) 904/487-5047.



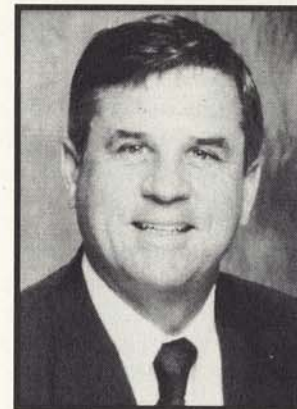
## Ronald A. Silver

*Democrat, District 38*

Attorney **born** June 25, 1943 in Cambridge, Massachusetts. Moved to Florida in 1958 **education** University of Miami, B.A., 1965; University of Miami, School of Law, J.D., 1968, Student Bar Association Senator; Phi Alpha Delta **wife** Irene Huth of Savannah, Georgia **children** Elayne and Joel **affiliations**

American Judges Association; North Dade Bar Association President, 1975; Florida Council of Bar Association Presidents Chairman, 1977-78; North Miami Beach Jaycees, President, 1971; B'nai B'rith Simcha Lodge;

Golden Glades Masonic Lodge; North Miami Beach Knights of Pythias; North Miami Beach Kiwanis Club; Sentencing Guidelines Commission; B'nai B'rith Anti-Defamation League Regional Board; United Democratic Club; William Lehman Involved Democrats **legislative service** House of Representatives, 1978-92; Chairman, Dade County Legislative Delegation, 1982-83; House Majority Whip, 1984-86; House Majority Leader, 1986-88; House Floor Leader for Governor, 1990-92; elected to the Senate in 1992 **other public service** Miami Assistant City Attorney, 1972-75; Lauderdale Lakes Municipal Judge, 1975-77; North Miami Beach Prosecuting Attorney, 1968-72; Governor's Task Force on Juvenile Justice Delinquency Prevention; Governor's Task Force on Criminal Justice; Chairman, Mobile Home Study Commission, 1983-84; Co-chairman, Ad Hoc Corrections Committee, 1990-91; Chairman, Condominium Study Commission, 1990-91; Chairman, Foreclosure Study Commission, 1991 **highlights** Allen Morris Award: Most Effective in Debate, 1988; Florida Department of Law Enforcement Crime Fighters Award, 1989; Miami Beach Chamber of Commerce Special Recognition Award for Outstanding Efforts on behalf of the economic future of Miami Beach, 1983; U. S. Jaycees Outstanding Young Man of America, 1977; Dade League of Cities Good Government Awards, 1985, 1986, 1988; United States Department of Justice/Drug Enforcement Administration, appreciation for outstanding contributions in the field of law enforcement, 1991 **religious affiliation** Jewish **recreation** tennis, softball, and basketball **addresses** (district) 2750 N.E. 187th Street, N. Miami Beach 33180 (Tallahassee) 246 Senate Office Building, 32399-1100 **telephones** (district) 305/937-1826 (Tallahassee) 904/487-5121.



## Donald C. (Don) Sullivan, M.D.

*Republican, District 22*

Orthopedic Surgeon **born** June 10, 1936 in Chicago, Illinois. Moved to Florida in 1972 **education** Northwestern University, B.S., 1958; Roosevelt University; Baylor University, M.D., 1962 **wife** Irene Hyland of Detroit, Michigan **children** Mary, Patrick, and Andrew **affiliations** Pinellas County Medical Society;

Florida Medical Association; American Medical Association; member: American Academy of Orthopedic Surgeons, Florida Orthopedic Society **legislative service** elected to the Senate in 1992 **other public service** Board of Directors, Goodwill Industries; Board of Directors, Straight Foundation, Inc.; Board of Directors, Pinellas County Medical Society; Member of Leadership St. Petersburg **highlights** Merit Award Pinellas County Medical Society, 1989-90 and 1991-92; Veterans of Foreign



Wars; American Legion; Certified, American Board of Orthopedic Surgery; American Medical Association's Physician's Recognition Award **military service** U. S. Air Force, orthopedic surgeon **religious affiliation** Catholic **recreation** hunting and private pilot **addresses** (district) 8050 Seminole Office Center, Suite 330, Seminole 34642 (Tallahassee) 340 Senate Office Building, 32399-1100 **telephones** (district) 813/547-7801 (Tallahassee) 904/487-5065.



## William H. (Bill) Turner

*Democrat, District 36*

Education administrator, consultant, former policeman, former teacher **born** August 1, 1931 in Miami **education** Bethune Cookman, B.S., 1956; University of Miami, M.Ed., 1969; Honorary Doctor of Laws Degree, Faith College, Birmingham, Alabama, 1982 **wife** Julia A. Turner of Summerton, South Carolina

**children** Sereetta, 33; Inger, 26; Mark, 23; Gersen, 19; Gina, 12; Wade, 11; Aron, 9 **affiliations** member, Circuit and County Courts Value Adjustment Board; Youth Crime Watch of America Advisory Board; Hialeah Hospital Advisory Board; Dade Public Education Fund Board of Directors; Miami-Dade Community College Advisory Board; Dade County Tax Adjustment Board; Elks Lodge 308 Executive Committee; National Alliance of Black School Educators; Dade County Association for Retarded Children; The Democratic Club of Miami Beach; Southern Association of Black Administration Personnel, Inc.; member, School Board's Self-Insurance Commission, 1972-92 **legislative service** elected to the Senate in 1992 **other public service** elected to Dade County School Board, 1971, 1974, 1982, 1986 and 1990; elected Chairman, 1989 and 1990 **highlights** Meritorious Service Award in appreciation of distinguished volunteer services on behalf of the United Negro College Fund and its member colleges and universities to assist deserving students in fulfilling their ambition to attend college; Black Student Opportunity Program Legends Award for unselfish support, vision, guidance and leadership, June 1991; The National School Boards Association, in appreciation for dedicated service to the school children of the nation; Outstanding Citizen of the Year, Association for Retarded Citizens, 1991; Honorary Chairperson, United Negro College Fund, 1990-present; The Hand of Friendship Award in Appreciation for Outstanding Support to African American Children, NAACP ACT-SO Committee, 1990; Certificate of Appreciation for valuable and distinguished service to the State and contributions to the quality of life in the state, Office of the Governor, 1986; *Who's Who Among Black*

*Americans*, 1974, 1985 and 1986; "William (Bill) Turner Day" proclaimed by Metropolitan Dade County and City of Miami in connection with the Bethune-Cookman College Alumni Association's Annual Founders Day Banquet honoring Mr. Turner as the "Product of a Dream," 1990 **military service** U. S. Army, 1951-53 **religious affiliation** Episcopal **recreation** fishing and listening to jazz **addresses** (district) 9999 N. E. 2nd Avenue, Suite 207, Miami Shores 33138 (Tallahassee) 234 Senate Office Building, 32399-1100 **telephones** (district) 305/758-8100 (Tallahassee) 904/487-5116.



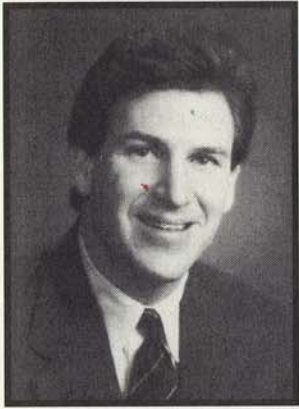
## Peter M. Weinstein

*Democrat, District 33*

Attorney **born** February 3, 1947 in New York, New York. Moved to Florida in 1977 **education** New York University, B.S., 1967; Brooklyn Law School, J.D., 1970, Junior and Senior Honorary Societies **wife** Barbara Ann Forman of Chicago, Illinois **children** Andrew and Michael **legislative service** elected to the

Senate in 1982, reelected subsequently; Broward County Legislative Chairman, 1985-86; Majority Leader, 1990-92 **other public service** Florida Sentencing Guidelines Commission, 1985-88; Florida Crime Prevention and Law Enforcement Study Commission, 1988; Florida Judicial Council, 1989-present; Florida Guardianship Oversight Board Chairman, 1991-present; Assistant District Attorney, Queens County, New York; Assistant State Attorney, Broward County; member: Broward County Charter Review Commission **highlights** Allen Morris Awards: Most Outstanding First-Term Member of the Senate, 1983-84; Most Effective in Committee, runner-up, 1987-88; "Legislative Child Advocate of the Year" by the Early Childhood Development Association, 1986; recognition of dedicated service to Florida children by the Florida Children's Forum; Florida Distinguished Service Medal by the Florida National Guard, 1991 **historical** The Honorable Moses Weinstein, father, New York Supreme Court Justice retired, and former Speaker of New York State Assembly; The Honorable Jeremy Weinstein, brother, former New York State Senator **military service** U.S. Army, awarded the Army Commendation Medal, discharged as Captain **religious affiliation** Jewish **recreation** reading and photography **addresses** (district) 7880 N. University Drive, Suite 301, Tamarac 33321 (Tallahassee) 236 Senate Office Building, 32399-1100 **telephones** (district) 305/726-1400 (Tallahassee) 904/487-5094.



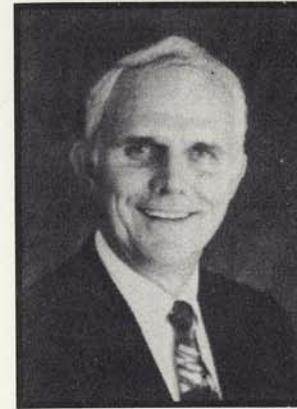


## Robert Wexler

*Democrat, District 28*

Attorney **born** January 2, 1961 in New York, New York. Moved to Florida in 1971 **education** Emory University, 1978-79; University of Florida, B.A., 1982; George Washington University Law School, J.D., 1985 **wife** Laurie Cohen of Glen Falls, New York **child** Rachel, 3 **affiliations** The Florida Bar; South Palm

Beach County Jewish Federation **legislative service** elected to the Senate in 1990, reelected subsequently **other public service** member: Palm Beach County Planning and Zoning Commission, 1989-90; Palm Beach County Democratic Executive Committee, 1989-90; Palm Beach County Affordable Housing Commission, 1990; Board of Directors Caldwell Theatre; Governor's Task Force on Productivity Enhancement **highlights** FTP-NEA Freshman Friend of Education Award, 1992; Florida League of Conservation Voters, Silver Medal Award, 1991 and 1992; Veterans of Foreign Wars, Certificate of Appreciation, 1992; Century Village West Outstanding Legislator Award, 1991; Voters Coalition Most Promising Newcomer Award, 1991; Academy of Florida Trial Lawyers Outstanding Member Award, 1992 **religious affiliation** Jewish **recreation** reading, tennis, chess, and travel **addresses** (district) 2500 N. Military Trail, Suite 252, Boca Raton 33431 (Tallahassee) 228 Senate Office Building, 32399-1100 **telephones** (district) 407/994-6505 (Tallahassee) 904/487-5091.



## Charles Williams

*Democrat, District 4*

Realtor, insurance, farmer **born** March 25, 1939 in Gilchrist County **education** Florida State University, B.S., Business Administration, 1961; Alpha Kappa Psi; ROTC, commissioned 2nd Lieutenant upon graduation **wife** Marilyn Jones of Branford **children** Charles III, 30; Cherie, 25; Wesley,

18 **affiliations** Masonic Lodge, Rotary Club **legislative service** elected to the Senate in 1992 **other public service** Suwannee County Commissioner: 1988-92, Chairman, 1991-92; member, Suwannee River Task Force, 1988-90; Suwannee River Coordination Committee, 1990-92; North Central Florida Regional Planning Council, 1988-92 **highlights** President, Lakeland Jaycees, 1967; One of Five Outstanding Young Men of Lakeland, 1968; ROTC Distinguished Military Student at FSU, 1961; President: Polk County Association of Insurance Agents, Lakeland Association of Insurance Agents **military service** U. S. Army, 1962-64 **religious affiliation** Baptist **recreation** fishing and hunting **addresses** (district) 102 Dowling Avenue, Live Oak 32060 (Tallahassee) 248 Senate Office Building, 32399-1100 **telephones** (district) 904/364-7777 (Tallahassee) 904/487-5017.





## Elected non-member officers

At its organization session every two years, the Senate elects a Secretary of the Senate and a Sergeant at Arms. These two officers are not members of the Senate. The Secretary keeps all Senate records and authenticates each act and joint resolution passed by the Senate. He also publishes the journal and the calendar and supervises Legal Research and Drafting, which drafts proposed legislation. The Sergeant maintains order in the chamber, in the gallery and in committee rooms. He is responsible for the acquisition and maintenance of all Senate property.



Joe Brown

*Secretary of the Senate*

**born** July 15, 1932 in Columbus, Georgia. Moved to Florida in 1932 **education** University of Florida, B.S.J., 1958, student publications; student government; Sigma Delta Chi; Alpha Gamma Rho; Florida State University, 1972-73, Graduate Certificate in Public Administration and Executive Management

**wife** Rebecca Anne Etheridge of Waycross, Georgia **children** Joe, Charles, Julie Lawhead, Ivy, and Andi, and grandson Jared **affiliations** Past and present: American Legion, Elks, Jaycees, Kiwanis, Boy Scouts, University of Florida Alumni Association, and Florida Blue Key honorary **legislative service** Assistant to Speaker of the House of Representatives, 1967; Senate Governmental Operations Committee, Staff Director 1971-72; Senate Director of Management and Staff, 1973-74; elected Secretary of the Senate, April 2, 1974; reelected subsequently; American Society of Legislative Clerks and Secretaries, past president; National Conference of State Legislatures, past Staff Vice President and past Staff Chair; Advisor and/or Counselor for Boys State, Girls State, YMCA Youth Legislature, and Silver-Haired Legislature **other public service** Executive Assistant to Commissioner of Agriculture, 1961-67; State Tourist Director, 1967; Deputy Beverage Director, 1967-68; Hotel and Restaurant Commissioner, 1969 **military service** U.S. Air Force, 1950-53 Korea; U.S. Coast Guard Reserve **religious affiliation** Methodist **recreation** hunting, fishing, camping, and cooking **address** Suite 404, The Capitol, 32399-1100 **telephone** 904/487-5270.



Wayne W. Todd, Jr.

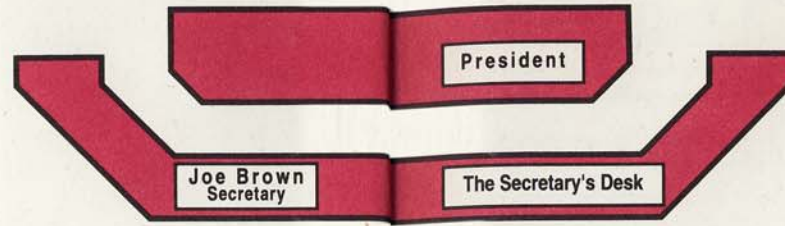
*Sergeant at Arms*

**born** July 19, 1944 in Tallahassee **education** Florida State University, B.S., 1968; attended Florida State University College of Law **wife** Ann Sadler of St. Petersburg **children** Kathryn Jennifer and Julie Hunt **affiliations** Elks; president, National Legislative Services and Security Association, 1985-87 **legislative**

**service** Acting Sergeant at Arms of the Senate, 1982; elected Sergeant at Arms of the Senate, November 16, 1982, reelected subsequently; National Conference of State Legislatures Executive Board, 1988-90 (member of Legislative Staff Coordinating Committee Task Force on Professional Staff Development); Assembly on the Legislature (Legislative Organization and Management Committee) **highlights** Florida Jaycees "Distinguished Service Award," 1977; United States Jaycees Outstanding Young Men of America, 1974; Jaycees Governmental Affairs Committee, State Chairman; U.S. Marshal's Training Academy, Washington, D.C., "Specialized Security" certificate, 1972 **military service** Florida National Guard, 1962-66 **religious affiliation** Methodist **recreation** hunting and fishing **address** Suite 403, The Capitol, 32399-1100 **telephone** 904/487-5224.







10  
**BROWN-WAITE**  
Brooksville

8  
**BANKHEAD**  
Jacksonville

4  
**WILLIAMS**  
Live Oak

2  
**HOLZENDORF**  
Jacksonville

3  
**THOMAS**  
Quincy

9  
**JENNINGS**  
Orlando

1  
**CHILDERS**  
Pensacola

5  
**KIRKPATRICK**  
Gainesville

7  
**HARDEN**  
Fort Walton Beach

6  
**CRENSHAW**  
Jacksonville

20  
**CRIST**  
St. Petersburg

18  
**GROGAN**  
Cocoa Beach

16  
**BURT**  
Ormond Beach

14  
**DYER**  
Orlando

12  
**SIEGEL**  
Altamonte Springs

11  
**JOHNSON**  
Leesburg

13  
**GRANT**  
Tampa

15  
**KURTH**  
Palm Bay

17  
**DANTZLER**  
Winter Haven

19  
**KISER**  
Dunedin

30  
**MEADOWS**  
Ft. Lauderdale

28  
**WEXLER**  
Boca Raton

26  
**McKAY**  
Bradenton

24  
**BOCZAR**  
Sarasota

22  
**SULLIVAN**  
Seminole

21  
**HARGRETT**  
Tampa

23  
**BEARD**  
Plant City

25  
**DUDLEY**  
Cape Coral

27  
**MYERS**  
Stuart

29  
**JENNE**  
Ft. Lauderdale

40  
**JONES**  
Miami

38  
**SILVER**  
North Miami Beach

36  
**TURNER**  
Miami Shores

34  
**GUTMAN**  
Miami

32  
**FORMAN**  
Hollywood

31  
**SCOTT**  
Ft. Lauderdale

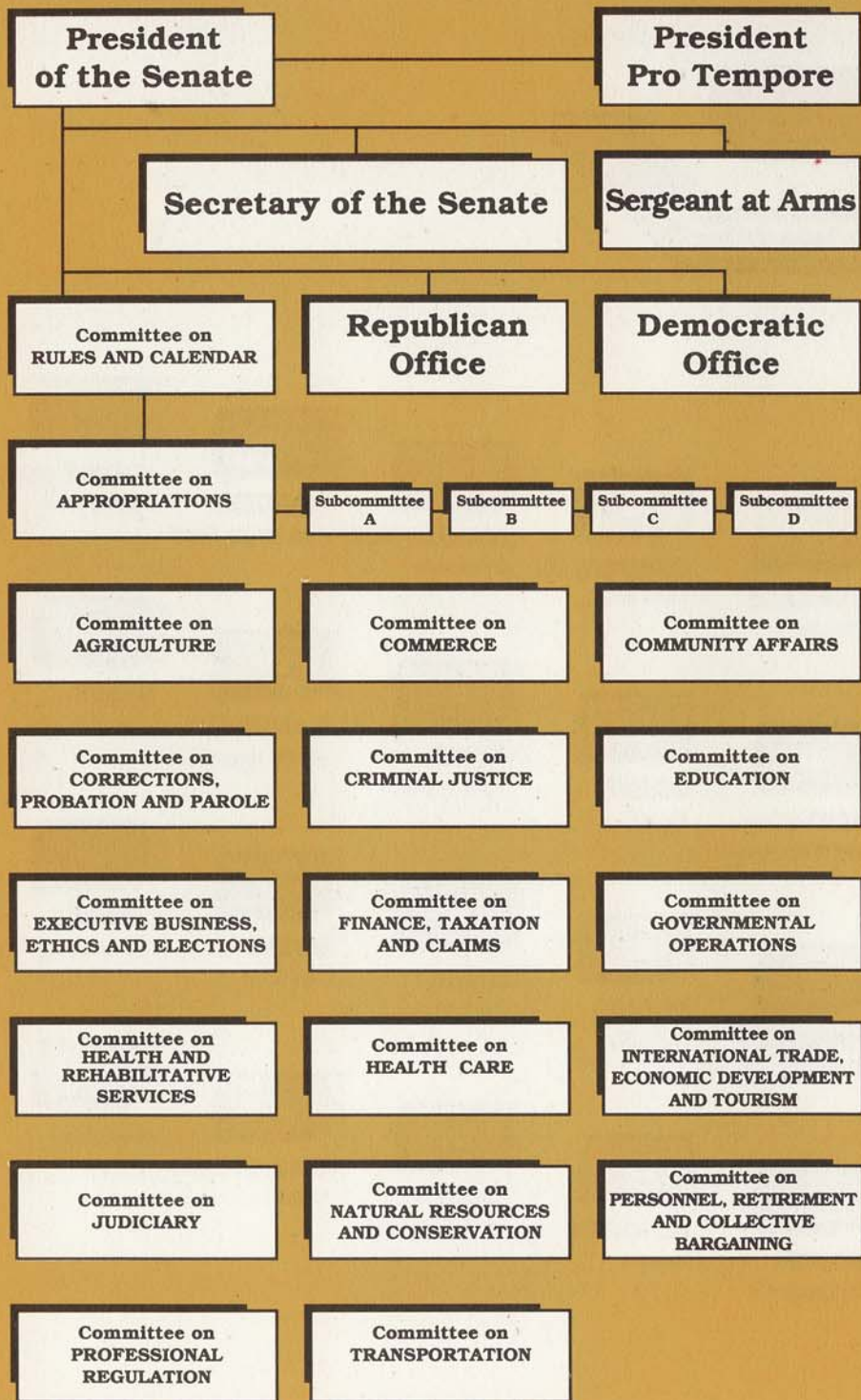
33  
**WEINSTEIN**  
Tamarac

35  
**FOLEY**  
West Palm Beach

37  
**DIAZ-BALART**  
Miami

39  
**CASAS**  
Hialeah





# Presidents of the Senate

## Session President

1839-40	John Warren
1841	William P. Duval
1842	William H. Brockenbrough
1843-44	George Walker
1845	James A. Berthelot
1846	Dennitt H. Mays
1847	Daniel G. McLean
1848	Erasmus D. Tracy
1850-52	Robert J. Floyd
1854-55	Hamlin V. Snell
1856	Philip Dell
1858-59	John Finlayson
1860-61	Thomas Jefferson Eppes
1862-63	Enoch J. Vann
1864	Abraham K. Allison
From 1865 through 1887 the Lt. Governor served as President.	
1889**	Patrick Houstoun
1889	Joseph B. Wall
1891	Jefferson B. Browne
1893	William H. Reynolds
1895	Frederick T. Myers
1897	Charles J. Perrenot
1899	Frank Adams
1901	Thomas Palmer
1903	Frank Adams
1905	Park M. Trammell
1907	William H. Harris
1909	Frederick M. Hudson
1911-12	Frederick P. Cone
1913	Herbert J. Drane
1915	Charles E. Davis
1917-18	John B. Johnson
1919	James E. Calkins
1921	William A. MacWilliams
1923	Theo T. Turnbull

## Session President

1925	John S. Taylor
1927	Samuel W. Anderson
1929	Jesse J. Parrish
1931	Patrick C. Whitaker
1933	Truman G. Futch
1935	William C. Hodges
1937	D. Stuart Gillis
1939	J. Turner Butler
1941	John R. Beacham
1943	Philip D. Beall
1945	Walter W. Rose
1947-48	S. Dilworth Clarke
1949	Newman C. Brackin
1951	Wallace E. Sturgis
1953	Charley E. Johns
1955-56	W. Turner Davis
1957	William A. Shands
1959	Dewey M. Johnson
1961	W. Randolph Hodges
1962-63	F. Wilson Carraway
1965	James E. Connor
1967	Verle A. Pope
1968-70	John E. Mathews, Jr.
1970-72	Jerry Thomas
1972-74	Mallory E. Horne
1974*	Louis de la Parte
1974-76	Dempsey J. Barron
1976-78	Lew Brantley
1978-80	Philip D. Lewis
1980-82	W. D. Childers
1982-84	Curtis Peterson
1984-86	Harry A. Johnston, II
1986-88	John W. Vogt
1988-90	Bob Crawford
1990-92	Gwen Margolis
1992-93	Ander Crenshaw
1993-94	Pat Thomas

\*Served as Acting President from July 1, 1974 when President Horne resigned until November 6, 1974

\*\*Ext Session

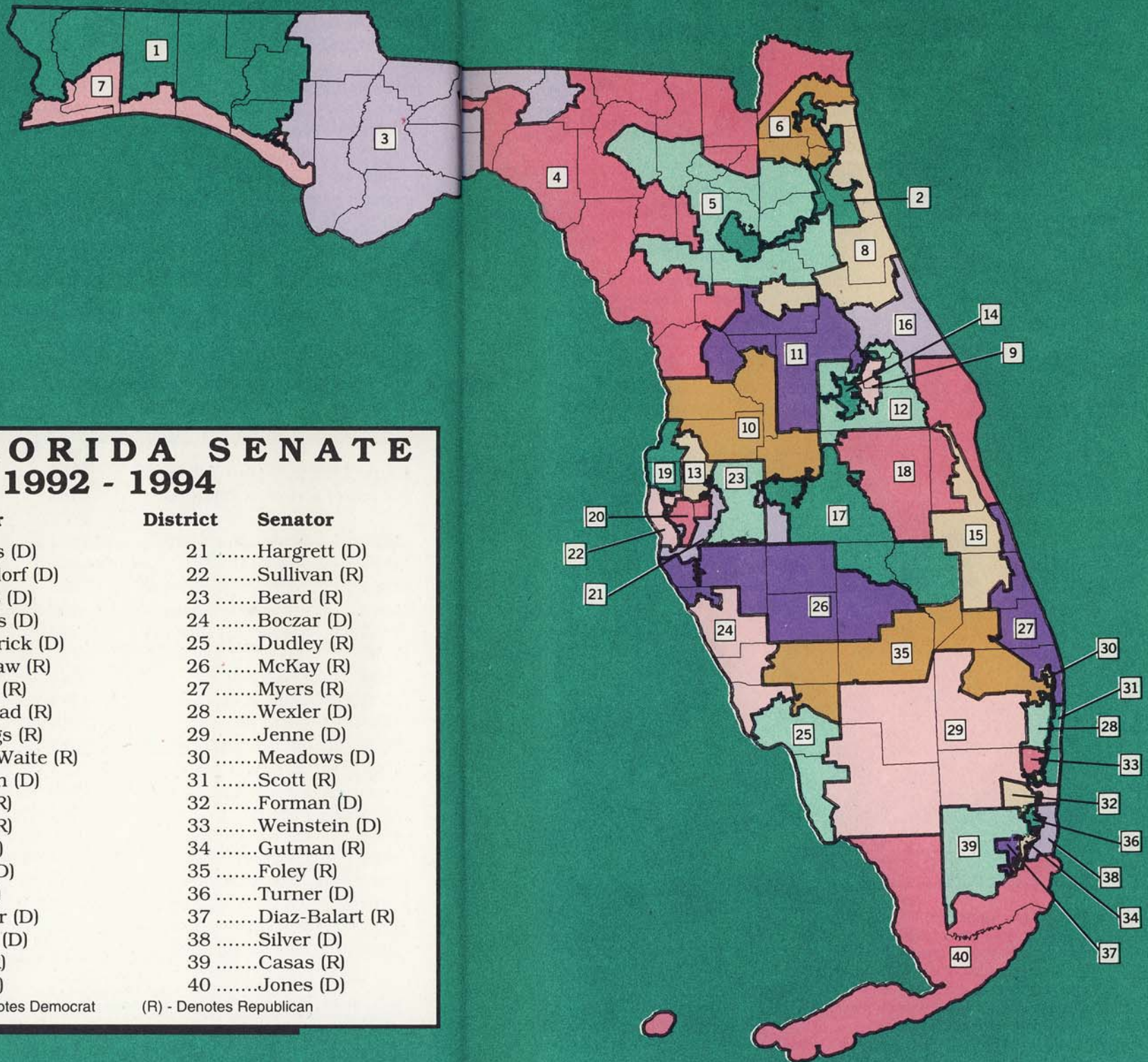


# THE FLORIDA SENATE 1992 - 1994

District	Senator	District	Senator
1	Childers (D)	21	Hargrett (D)
2	Holzendorf (D)	22	Sullivan (R)
3	Thomas (D)	23	Beard (R)
4	Williams (D)	24	Boczar (D)
5	Kirkpatrick (D)	25	Dudley (R)
6	Crenshaw (R)	26	McKay (R)
7	Harden (R)	27	Myers (R)
8	Bankhead (R)	28	Wexler (D)
9	Jennings (R)	29	Jenne (D)
10	Brown-Waite (R)	30	Meadows (D)
11	Johnson (D)	31	Scott (R)
12	Siegel (R)	32	Forman (D)
13	Grant (R)	33	Weinstein (D)
14	Dyer (D)	34	Gutman (R)
15	Kurth (D)	35	Foley (R)
16	Burt (R)	36	Turner (D)
17	Dantzler (D)	37	Diaz-Balart (R)
18	Grogan (D)	38	Silver (D)
19	Kiser (R)	39	Casas (R)
20	Crist (R)	40	Jones (D)

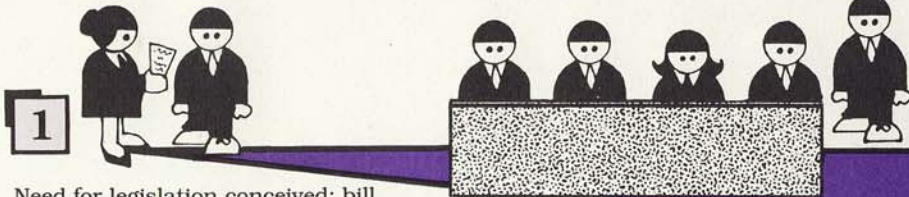
(D) - Denotes Democrat

(R) - Denotes Republican

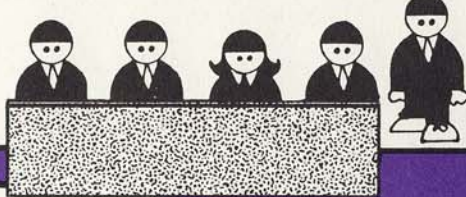




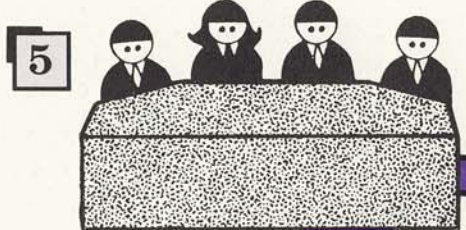
# How a Senate Bill Becomes a Law



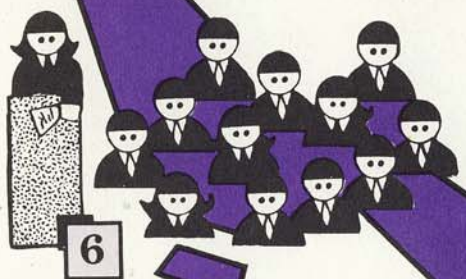
**1**  
Need for legislation conceived; bill is prepared, numbered, introduced and referred to one or more committees.



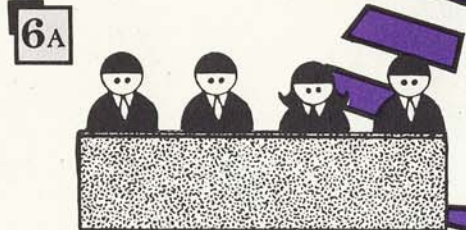
**2**  
Committee hearings held. Public is invited to testify. If bill is reported favorably....



**5**  
Committee hearings held. Public is invited to testify. If bill is reported favorably....



Bill debated by full House, amendments considered. If the bill passes House it becomes an Act and goes to Governor.



**6A**  
Conference committee. If the two houses cannot agree on a final bill, a conference committee works out a compromise and both houses then vote on the compromise. If compromise bill passes it becomes an Act and goes to Governor.



Bill debated by full Senate, amendments considered. If the bill passes Senate....

**3**

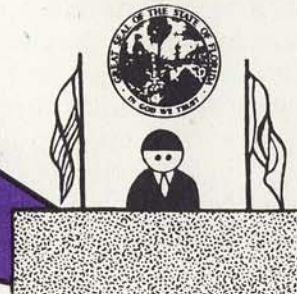


**4**

Bill goes to the House of Representatives where it is referred to one or more committees.

**How a bill becomes a law**

Bills may be introduced by one or more Senators or Representatives in their respective houses. When a Senate bill has been prepared, it is delivered to the Secretary of the Senate for introduction and is given a number. The bill is then read the first time by publication in the journal. It is referred to the appropriate committees, and the original copy is delivered to the chairman of the committee of first reference. The process continues as illustrated above.



To Governor for his approval or veto. If vetoed, 2/3 vote in each house overrides veto.

**7**



# Three Branches of Government

Florida's Constitution, in the traditional American pattern of "separation of powers," divides the governmental structure of the state into three separate and independent branches.

The Legislative Branch has exclusive law-making power and determines the general policies by which the problems of society are to be met. It may delegate limited rule-making power to some executive agencies.

The Executive Branch, with the Governor as its chief, administers the laws made by the Legislature. The Cabinet--composed of the Secretary of State, Attorney General, Comptroller, Treasurer, Commissioner of Agriculture and Commissioner of Education--shares some executive power and responsibilities with the Governor.

The Judicial Branch interprets the law and applies the Constitution. The judiciary also presides over trials, although certain limited administrative disputes may be decided by executive agencies when authorized by law.

This structural division, faithfully maintained, sets up a system of "checks and balances" to ensure that all three branches properly perform their constitutional duties in the administration of state affairs.

## The Legislative Branch

**Composition and organization** Florida's Legislature is composed of two houses, the Senate and the House of Representatives. Each house is the sole judge of the qualifications and elections of its members and has the power to choose its own officers and establish its own rules of procedure. All legislative sessions are open to the public, except sessions of the Senate when appointments or suspensions of public officials are considered. Either house of the Legislature may initiate legislation on any subject.

The state Constitution, adopted in 1968, provides that the Legislature shall be apportioned into not less than 30, nor more than 40, senatorial districts; and not less than 80, nor more than 120, representative districts. The Legislature met that mandate during the 1972 session when it established 40 Senate districts and 120 House districts and membership of each house has since remained at that same number. Senators serve four-year terms and representatives serve two-year terms.

### Elections and qualifications

The Constitution requires that members of the Legislature be elected at the general election in November of even-numbered years. Party candidates are nominated in party primary elections held prior to the general elections. Members of the Legislature must be at least 21 years old, electors and residents of the district they represent, and Florida residents for two years prior to election.

### Legislative sessions

Two weeks after each general election, the Legislature convenes for the exclusive purpose of organization and election of officers. Even though officers are formally elected during this organization session, they may have been previously designated by their respective party caucuses. No legislation is considered during the organization session.

Regular sessions of the Legislature begin on the first Tuesday after the first Monday in February in odd-numbered years and continue for sixty consecutive days. The Legislature may by law change its convening date in even-numbered years but generally leaves the date the same as odd-numbered years except once every 10 years when it deals with reapportionment.

Special sessions may be called by the Governor, or may be convened by joint proclamation of the President of the Senate and the Speaker of the House. Special sessions may not exceed twenty days, unless extended by a three-fifths vote of each house. Each "call" for a special session outlines the business to be considered. The Legislature may also be convened in extra session if three-fifths of the members of both houses agree. When in extra session, the Legislature may consider any subject as if convened in regular session, but an extra session is limited to thirty days. The President of the Senate may convene the Senate in special session to consider executive suspensions even when the House of Representatives is not meeting.

### Committees

The committee is the heart of the legislative process, functioning to study, research, and plan solutions to "people problems." The Senate and House rules provide for certain standing committees, special or select committees, and subcommittees. The presiding officers name the chairmen and members of all committees.

Bills are assigned to one or more committees for study. In this preliminary screening the committees may hold public hearings where committee members hear sponsoring legislators and others



in the industry or profession, the governmental agency, or the general public, who are interested in the bill. The committee then votes to recommend the bill favorably, unfavorably, or favorably with amendments to be considered when the bill is debated on the floor by the full Senate.

When the Senate and House are unable to agree on the final content of a bill, it goes to a conference committee. This committee, composed of members of both houses, tries to resolve the differences between the Senate and House versions of a bill. The conference committee report must be approved by both houses.

Other committees commonly used are joint committees, which are composed of members from each house; and select committees, which are usually appointed to make recommendations on special or unique problems.

The Joint Legislative Management Committee supervises services which can be shared by both houses, thereby affording better facilities at a reduced cost. The Legislative Auditing Committee, another joint Senate-House committee, employs an Auditor General who audits governmental agencies.

Florida's Public Counsel is also an office of the Legislature. The Public Counsel represents Florida consumers in utility rate cases.

Administrative Procedures is another joint legislative committee. It reviews regulations passed by executive agencies based on Florida laws. ACIR stands for Advisory Council on Intergovernmental Relations and is also considered partly legislative.

**Lobbying** By definition a lobbyist is anyone who tries to influence legislation. Unless exempt, all persons who seek to influence legislation must register with the Joint Legislative Management Committee before they begin lobbying. Every lobbyist must also state any direct business association or partnership with any current member of the Legislature and make periodic reports on monies spent lobbying.

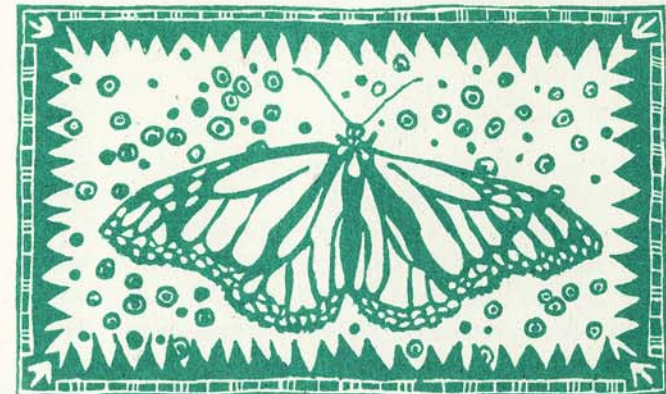
**Forms of legislation** Legislative proposals may be in the form of bills, resolutions, concurrent resolutions, joint resolutions, or memorials.

A bill is a proposed law, and it may be either a general bill or a local bill. A general bill would have a general impact within the state; a local bill would affect only a particular county, city, or town named in the bill. A majority vote is required to pass a bill.

A resolution expresses the opinion of one house of the Legislature, whereas a concurrent resolution expresses the opinion of both houses. A joint resolution is usually a proposal to amend the State Constitution, to apportion the Legislature, to set the effective date of a vetoed bill when the veto is overridden, or to recess for more than seventy-two hours. Resolutions, concurrent resolutions, and joint resolutions are passed by a majority vote, except that a three-fifths vote of the members of both houses is required to pass a joint resolution that proposes an amendment to the State Constitution.

A memorial is a petition addressed to the President of the United States, the Congress, or some official agency of the federal government. It requests action or expresses the Legislature's collective viewpoint and is passed by a majority vote.

**Impeachments** The Governor, Lieutenant Governor, members of the Cabinet, justices of the Supreme Court, and judges may be removed from office only by impeachment. The House of Representatives has the sole power to impeach, that is, to bring charges. The Senate then tries all impeachments, with the Chief Justice of the Supreme Court presiding. A two-thirds vote of the Senate is required to convict. If convicted, the officer is removed from office.





# The Senate Chamber

**F**requently before a session of the Senate convenes, senators can be seen scurrying "to the floor" or "to the chamber." They're headed for the modern room on the fourth floor of the Capitol where they debate the merits of proposed legislation. This is the fourth chamber used since the first session of the Senate was called to order in 1839. In 1978, the senators held their first session in this chamber.

On the floor above the chamber, and appearing to drop down into the chamber, is the gallery. Citizens may be seated in the gallery and may observe the Senate in session. From the gallery one's attention is drawn to the rostrum where the President is presiding.

The President occupies the "chair," pacing the flow of legislation, deciding who will speak, and ruling on parliamentary disputes. The President frequently calls on other members to preside while he works out the details of legislative proposals. If the President wishes to debate an issue before the Senate, he will vacate the chair and speak from his regular desk on the floor.

The portraits hanging below the gallery commemorate past Presidents of the Senate. After each President's two-year term a portrait is painted and hung in this area. The portraits are arranged in chronological order with the most recent one on the presiding officer's right. Since all spaces are now filled, each time the newest one is added, the oldest one is taken down and moved to the Old Capitol, keeping 100 years of past Presidents on display in the "new" chamber.

Just above the President, recessed into the ebony walls, is the screen for the video projection system which displays the text of proposed amendments as they are offered in debate. The display system is also used to welcome groups of visitors watching from the gallery. In the booth on the left side of the screen, computer operators record the Senate's actions into the legislative information network. The booth on the right houses the sound system operators.

**I**n front of the President's rostrum is the Secretary's "desk," which is staffed by the Secretary of the Senate. Legislative business is not properly before the Senate until it is "on the desk." Clerks at this desk read the bills and amendments before

the body and record Senate actions. These actions are published in the journal, the official record of Senate proceedings. The video system and the voting boards are also operated from this desk. A senator who wishes to "approach the well" to make a speech on a particularly important matter speaks from one of the reading podiums at the secretary's desk.

Voting boards on each side of the chamber record a member's green "yea" or red "nay" votes. (The yellow lights you see by some names aren't caution lights or indications that a senator can't decide how to vote. They're signals that the senator wants a "page" to deliver a message or retrieve a file from his office, and you can be sure that one of the blue-blazered messengers will be at the senator's desk shortly.) The voting boards also display the number of the bill or amendment being debated and other information related to the proceedings. Electronic voting was first used in the Senate in 1966, and now nearly all votes are recorded electronically.

The seating arrangement in the chamber is determined by district number. Senators from odd-numbered districts sit on the President's left, and those representing even-numbered districts sit on the right. There are exceptions to this tradition. The chairman of the Committee on Rules and Calendar sits in the first seat to the President's left in the front row. The President Pro Tempore is seated to the President's right in the front row. With these exceptions, the seats are arranged numerically. The front row numbers are single digit, the second row all teens, the third row in the twenties and the back row holds the thirties and number 40.

**A**t one time, the chamber desk was a member's only desk. Their secretaries sat beside them in the chamber, frequently even during sessions. Often a senator would interrupt a letter he was dictating to rise and speak on a bill, then return to his correspondence after he had his say. Now adequate office space is provided for the senators and their staff; telephones at each chamber desk provide direct communication with the staff. Today, only members of the Senate and designated staff members are allowed in the chamber while the Senate is in session. Certain present and past state officials and guests invited by the President may also enter the chamber during a session. All men in the chamber must wear coats and ties.

Senators are addressed by their district number when they are



recognized to speak. Custom decrees that a senator may not be addressed as a gentleman or lady, as are members of the House of Representatives. He or she is "the senator from the thirty-fifth," for example, but never "the gentleman or lady from the thirty-fifth." During debate, the members are always formally addressed as "senator," not by their given names.

In the room at the right rear of the chamber, staff attorneys draft "floor amendments" to bills being debated. The caucus room at the left rear is frequently used for quick conferences of senators, often with their colleagues from the House of Representatives. Just over the main entrance is the press gallery, where members of Florida's press corps record history. The remainder of the gallery is open to the public at all sessions, except that a portion of the gallery is usually reserved for the senators' families and other sections are often reserved for visiting students.

Television cameras from Florida Public Broadcasting are positioned at the front and rear of the gallery to televise all Senate sessions. Each weekday evening during the session, public television stations broadcast "Today in the Legislature," a one-hour program summarizing legislative action during the day. The broadcasts are funded by the Legislature, but all editorial content is determined by the group of professional journalists who produce the programs. Florida's legislative telecasts were used as a model for a similar system installed in 1979 in the U.S. House of Representatives.

### **ABOUT THE FLORIDA SENATE HANDBOOK**

This handbook is distributed free of charge to Capitol visitors and other interested Floridians to enhance their knowledge and understanding of Florida's government, and particularly, the Florida Senate.

You will note that the booklet is also splashed with symbols of those natural elements which make Florida beautiful. One of the primary jobs of Florida's Senate and government is the conservation and preservation of the natural resources of our state. As part of that goal, this booklet is printed on recycled paper.

The Florida Senate handbook is published by the Secretary of the Senate with a special thanks this year to Paulette Grimaldi Garner, who produced all the graphics and art; and Shirley Joyce, Norma McKee and Pam Simcoke, who were responsible for the text.

