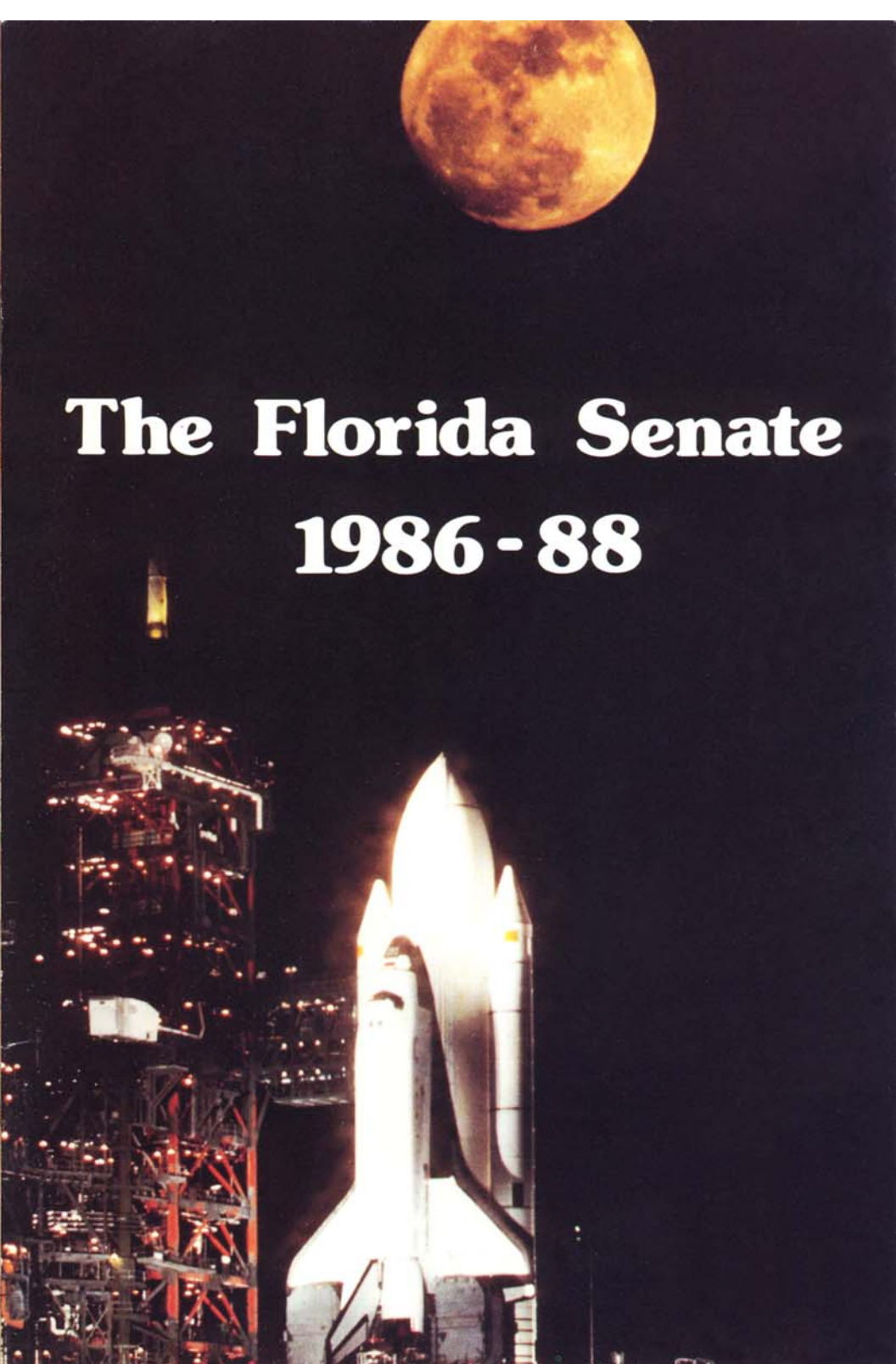




The Florida Senate 1986 - 88



A message from the President



SENATOR JOHN W. VOGT
President

Dear Friends and Fellow Floridians:

This booklet is presented to you on behalf of the 40 members of the Florida Senate, with the hopes that you will become more informed about the role of the Senate and its place in the governance of our citizens, and be a more interested and active participant in that process.

The handbook is designed to give you basic information about the Senate, its members and its mission. I hope that it will also inspire you to visit the Capitol and see firsthand what goes into the policymaking and lawmaking process of our state.

Sincerely,

A handwritten signature in black ink that reads "John W. Vogt".

John W. Vogt
President

About the Front Cover

The front cover is from a photograph taken by Cecil Stoughton and presented to Senate President John Vogt in a collage titled "Saga of the Columbia". Mr. Stoughton is former White House photographer for Presidents John F. Kennedy and Lyndon B. Johnson and is now a neighbor of Senator Vogt on Merritt Island. The collage hangs in the office of the president at the Capitol. The cover is a salute by the Senate to the space program and the space industry, in recognition of their importance to the State of Florida and the United States of America.

The Florida Senate

The Florida Senate is made up of 40 members, each from a single district representing about 300,000 Florida citizens. They are elected for four year terms and may be elected for more than one term.

The 1986 Senate membership includes 30 men and 10 women. There are 25 Democrats and 15 Republicans whose professions or occupations include law, medicine, banking, business, agriculture and industry. The average senator is 51 years old, is married and has children. Thirty-two of the senators have college degrees and thirty-four have held other public offices before they were elected to the Senate. Twenty-seven senators served in the House of Representatives prior to their election to the Senate. Others have served in various capacities of local governments.

The Senate is presided over by a President elected by the members of the Senate for a two year term. Other officers of the Senate, also elected for a two year term, include the President Pro Tempore who assists the President and carries out duties assigned by him and presides in his absence; the Secretary and the Sergeant at Arms who are not members of the Senate but serve all members of the Senate under the direction of the President.



JOHN W. VOGT
President of the Senate

The President for the 1986-88 term is Senator John W. Vogt, a fifteen year veteran in the Senate and an engineer from Merritt Island. The President Pro Tempore is Senator John A. Hill, a nine year veteran of the Senate and an insurance executive from Hialeah.

Additional information on these officers and members of the Senate, is contained on the following pages of this booklet.

The booklet also further outlines and describes the Senate and its operation and its relationship to the other House of the Legislature and the other two branches of Florida government.

The purpose of the booklet is to help you better understand your Senate and government, its members and operation, and its role of service to you, the citizens of the State of Florida.



Senator John W. Vogt of Merritt Island was sworn in as President of the Senate at the organization session on November 18, 1986 (top). Senator John A. Hill of Hialeah was sworn in as President Pro Tempore (lower). Both officers were sworn in by Florida Supreme Court Justice Rosemary Barkett. The President and President Pro Tempore serve for two years.



Officers of the Senate

President of the Senate

John W. Vogt Democrat, District 17

Registered professional engineer in Florida, New York and Maryland; President, Amasek, Inc. **born** December 28, 1936 in Lake Wales **education** University of Florida, B.C.E., 1961; graduate work at the University of South Florida and Rutgers University; president of Alpha Tau Omega, 1960 **wife** Tonie Fernandez of Miami **children** D'Anna, Suzanne, Leanne, Lisa and Vicki **affiliations** Chamber of Commerce; Florida Engineering Society; Boy Scouts of America, Advisory Council; Cocoa Kiwanis; Missile, Space and Range Pioneers, Inc.; University of Florida and University of Central Florida Engineering Advisory Councils; Florida Solar Energy Center Policy Advisory Board; Seminole Community College Community Instructional Services Advisory Board; National Institute of Building Sciences, Florida Consultative Council, chairman; University of Central Florida School of Business Advisory Committee; Brevard Art Center and Museum, Advisory Board **legislative service** elected to the Senate in 1972, reelected subsequently **other public service** Brevard COPE Advisory Board **highlights** *Pensacola News-Journal* Award "Outstanding Freshman Senator," 1973; Outstanding Florida Young Democrat, 1973; Kissimmee-St. Cloud Jaycees "Good Government Award," 1973-74; Canaveral Council of Technical Societies "Engineer of the Year," 1973; Florida Association for Retarded Citizens "Senator of the Year," 1975, 1979 and 1983; Florida Association of Community Colleges "Legislative Service Award," 1976, 1977, 1978; Florida Chapter of the Acoustical Society of America Environmental Award, 1976; Florida Federation of Humane Societies Humanitarian Award, 1976; Florida Epilepsy Foundation Legislative Leadership Award, 1977; National Foundation March of Dimes "Distinguished Voluntary Leadership Award," 1977; Brevard Cancer Society Outstanding Legislator Award, 1978; Florida Audubon Society Legislative Award, 1978 and 1980; Titusville Knights of Columbus Distinguished Legislative Service Award, 1979; National and Florida Wildlife Federations Conservation Legislator of the Year, 1979 and 1981; Variety Children's Hospital "Helping Hand Award," 1979; Florida Sierra Club Legislative Award, 1979; Public Defenders of Florida Legislative Appreciation Award, 1979; Florida Council of Handicapped Organizations, Award of Recognition for Outstanding Service, 1980; Florida Civitan Club's Good Citizenship in Government Award, 1980; Florida Institute of Consulting Engineers, Outstanding Civic Contributions by a Consulting Engineer, 1980; Florida Chamber of Commerce, Appreciation Award for Outstanding Leadership in the passage of the Omnibus Permitting Bill, 1980; Cocoa-Rockledge Civic League, Appreciation Award for Outstanding Leadership in making the Monroe Center Project a reality, 1980; Institute of Food and Agricultural Sciences, recognized for efforts in maintaining the delicate balance between the needs of Florida agriculture and the environment, 1981; Disabled Citizens in Action, Legislative Award, 1981; Florida Society of Ophthalmology, Legislative Award, 1981; Space Coast Association of Physically Handicapped, Legislator of the Year Award, 1981; Florida Engineering Society Award, 1981; Florida Guardian Ad Litem Program's Most Effective Senator Award, 1982; Florida League of Hospitals, Outstanding Legislator Award, 1982; Florida Network of Youth and Family Services, Most Valuable Member of Florida Senate, 1982; Florida Shore and Beach Preservation Association's Annual Legislative Award, 1982; Florida Psychological Association, Legislator of the Year, 1983; Florida Health Care Association, Outstanding Legislator Award, 1983; Florida Council for Community Mental Health, Legislator of the Year, 1983; *Engineering News-Record*, Award for Contributions to the Construction Industry, 1984; Florida Septic Tank Association, Outstanding

Senator Award, 1984; Humane Society of the United States, Appreciation Award, 1984; Associated Builders and Contractors, Legislator of the Year, 1984; Florida Sheriffs Association Legislative Award, 1984; Florida Society of Ophthalmology, Appreciation Award, 1984; Spina Bifida Association, Appreciation Award, 1984; "Most Effective Member of the Senate," 1985, runner-up, 1986 (Allen Morris Award); Florida Chamber of Commerce, Appreciation Award for leadership in passage of Growth Management Act of 1985; Florida Ports Council, Tugboat Award, 1986; Florida Chamber of Commerce Award for Quality of Life Legislation, 1986 **historical** Dr. Daniel A. Vogt, great-great-uncle of Ocala, was a member of Florida House of Representatives from Marion County, 1856-1861; Albertus Vogt, grandfather, discovered phosphate near Dunnellon in 1880's; old family residence still in existence at Vogt Springs near Dunnellon **church** Catholic **recreation** tennis and hunting **addresses** (district) 102 Columbia Drive, Suite 205, Cape Canaveral, 32920 (Tallahassee) The Capitol, Suite 409 or 404 Senate Office Building, 32399-1100 **telephones** (district) 305/783-9618 (Tallahassee) 904/487-5229 or 487-5056.

President Pro Tempore of the Senate

John A. Hill Democrat, District 33

Insurance executive **born** May 20, 1931 in Miami **education** Miami Dade Junior College **wife** Vivian Carlson of Miami **children** John, Allen and Kathy **affiliations** past member and president of Local Union 359, International Brotherhood of Electrical Workers; past member and assistant business manager of System Council U-4, International Brotherhood of Electrical Workers; Hialeah-Miami Springs Chamber of Commerce, director, 1974-75; Spotlight Club of Hialeah, second vice president, 1972-74; Hialeah Optimist Club; Rotary Club of Miami Lakes, president, 1972-73; Mahi Temple AANMS; Scottish Rite, Valley of Miami, Orient of Florida; Order of Eastern Star, Allapattah Chapter 194; National Association of Life Underwriters; the Tree of Italy **legislative service** House of Representatives, 1974-78; House Majority Leader, 1976-78; elected to the Senate in 1978, reelected subsequently **highlights** New York Life Top Club Centurion Award; National Sales Achievement Award from the National Association of Life Underwriters; Florida Education Association's Outstanding Freshman Legislator, 1975; George Groome Award as Outstanding Freshman Legislator from the Rotary Club; Hialeah Spotlight Club's Edward A. Wallace Award as "Outstanding Freshman Legislator," 1975; Kiwanis Distinguished Service Award, 1975; received the key to Dade County for economic development service to the county; City of Hialeah Appreciation Award, 1976; Teacher in Government Education Award, 1978; Florida Podiatry Association, Legislator of the Year Award, 1980; Sickle Cell Foundation Award, 1981; received key to City of Hialeah, 1981; Appreciation Award from PBA for participation in establishing Police Memorial, Firefighters Award, 1982; Award of Appreciation from Latin Builders Association, 1982; High Noon Optimist Award of Appreciation, 1982; Grand Jury Labor Award, 1982; Apprenticeship Council Appreciation, 1982; ABATE of Florida, Inc. Appreciation Award, 1984, S.E. Chapter, 1985; South Hialeah Elementary PTA Appreciation Award, 1984; Mayor of Hialeah, Raul Martinez, proclamation; Hialeah-Miami Springs YMCA, sustaining campaign presentation, 1984; Dade County League of Cities, Inc., Appreciation Award, 1984; City of Opa-Locka, Certificate of Appreciation, 1984; Florida Association of Home Health Agencies, Inc., Appreciation Award, 1984; Florida Council on Crime and Delinquency, Distinguished Service Award, 1985. Certificate of Completion in Correctional Megatrends, 1986; PRIDE of Florida, Appreciation Award, 1985; Miami Lakes Jr. High, Certificate of Appreciation, 1985; Hialeah-Miami Springs N.W. Dade Chamber of Commerce, Certificate of Appreciation, 1986; United Teachers of Dade TIGER Award, 1986 **military service** U.S. Marine Corps Reserve, 1950-63, master sergeant **church** Presbyterian **recreation** golf, racquetball and swimming **addresses** (district) 1140 West 50th Street, Suite 202, Hialeah 33012 (Tallahassee) 405 Senate Office Building, 32399-1100 **telephones** (district) 305/558-6780 (Tallahassee) 904/487-5106.

Members of the Senate



Dempsey J. Barron Democrat, District 3 Dean of the Senate

Attorney, businessman and rancher **born** March 5, 1922 in Andalusia, AL. Moved to Florida in 1924 **education** Florida State University, B.S.; University of Florida, J.D. **children** Steve and Stuart **affiliations** American, Florida, Fourteenth Judicial Circuit and Bay County Bar Associations **legislative service** House of Representatives, 1956-60; elected to the Senate in 1960, reelected subsequently, President Pro Tempore, 1967-68, President, 1974-76, Dean of the Senate and Dean of the Legislature **highlights** president of House of Representatives Freshman Club, 1957; Florida Jaycees Good Government Award, 1966; "Most Effective in Debate," 1971 and 1979, "Most Effective in Committee," 1972, "Most Effective Member of the Senate," 1974, 1975, 1977, 1980 and 1982 (Allen Morris Awards); Tampa Bay Good Government Award, 1975-76; Florida March of Dimes Award, 1976; Florida Academy of Family Physicians Freedom Heritage Award, 1976; Constitution Revision Commission, 1977-78; Unified Sportsmen of Florida Legislator of the Year Award, 1980 and 1982; "Most Valuable Member of the Senate," 1982 (St. Petersburg Times Award); Florida Realtors' Legislator of the Year, 1983; American Judicature Society Award of Merit, 1984; Organized Fishermen of Florida, Outstanding Legislator Award, 1986 **military service** U.S. Navy, Pacific and European theaters during World War II **recreation** hunting and fishing **addresses** (district) P.O. Box 1638, Panama City 32401 (Tallahassee) 205 Senate Office Building, 32399-1100 **telephones** (district) 904/785-7454 (Tallahassee) 904/487-5009.



Malcolm E. Beard Republican, District 22

State Senator **born** February 21, 1919 in Moultrie, GA. Moved to Florida in 1924 **education** University of Tampa **wife** Mary Ellen Moreau of Oak Hill, WV **children** Thomas M. Beard and Barbara Mullins **affiliations** past president of Florida Sheriffs Association; past president of Justices of the Peace and Constables Association; past president of FBI National Academy Associates of Florida; past president of Boys Clubs of Tampa; past state director of National Sheriffs Association; board of directors: Florida Bureau of Law Enforcement, Florida Sheriffs Boys Ranch, Girls Club of Tampa, Gulf Ridge Council, Boy Scouts of America; board of directors and general chairman of Hillsborough County Scout-O-Rama, 1968; Egypt Temple Shrine Honor Patrol **legislative service** House of Representatives, 1978-80; elected to the Senate, March 25, 1980, reelected subsequently **other public service** Hillsborough County Constable, 1957-65; sheriff of Hillsborough County, 1965-78; Appointed by the Governor to serve as a member of the State Commission on Human Relations; the Governor's Commission on Standards and Goals; Supreme Court Advisory Committee on Plea Bargaining, Sentencing and Bail on Appeal; Governor's Task Force on Correctional System; Interagency Law Enforcement Planning Council, Region V, Mutual Aid Coordinator **highlights** Governor's Medal, 1967; Tampa Jaycees Award for Good Government; Hillsborough County Bar Association Liberty Bell Award; Sertoma International Freedom Award; Optimist International, Florida District, Law Enforcement Award;

Black Community Professional Award; National Conference of Christians and Jews Silver Medallion Award **military service** U.S. Navy, World War II **church** First Christian, served as Deacon **recreation** hunting and fishing **addresses** (district) P.O. Box 16516, Temple Terrace 33687 (Tallahassee) 242 Senate Office Building, 32399-1100 **telephones** (district) 813/272-6708 (Tallahassee) 904/487-5072.



Tom C. Brown
Democrat, District 10

Legislator **born** August 26, 1933 in Daytona Beach **education** David Lipscomb College, Nashville, TN, B.A., 1958; University of Florida, M.A., 1965; Phi Kappa Phi Scholastic Society; Baseball; Basketball **wife** Jo Young of Franklin, KY **children** Lauren, Mark, Kevin and Keith **affiliations** Past member of board of directors, Committee of 100; past member of board of directors, Volusia County Drug Council; past member of board of directors, United Way; past member, National Association of Security Dealers; past member, International Association of Financial Planners; past chairman, Citizens For Responsible

Government; Volusia County Ambassadors; board of directors, Coastal Educational Broadcasters; Phi Kappa Phi Scholastic Society **legislative service** House of Representatives 1980-86; elected to the Senate in 1986 **other public service** Volusia County Council 1979-80; East Volusia Transportation Authority; Metropolitan Planning Organization; Volusia County Drug Council; Chairman of Legislators and on the Executive Committee of the Atlantic States Marine Fisheries Commission; National Conference of State Legislatures; Southern Legislative Conference **highlights** Environmental Good Government Award, 1980; Committee of 100 Service Award, 1981; Sierra Club Legislative Appreciation Award, 1982; Audubon Society Legislative Award, 1982; St. Johns River Water Management District Award, 1983; FTP-NEA Friend of Education Award, 1983; Teacher Education Center Council Award, 1984; Florida Health Care Association Outstanding Services Award, 1984; Staff Development Distinguished Service Award, 1985; Community Outreach Services Community Service Award, 1985; Daytona Beach Downtown Business Association Award, 1985; Florida Regional Councils Association Award, 1986 **military service** U.S. Army, 1954-56 **church** Church of Christ **recreation** fishing, golf, tennis, restoring antiques and woodcarving **addresses** (district) 326 1/2 S. Beach, Daytona Beach 32014 (Tallahassee) 200 Senate Office Building, 32399-1100 **telephones** (district) 904/253-9327 (Tallahassee) 904/487-5033.



Donnell C. (Don) Childers
Democrat, District 28

Contractor; bank advisory board member **born** March 3, 1932 in Skipperville, AL. Moved to Florida in 1960 **education** Troy State University, B.S., 1960 **wife** Kay Bess of Miami **children** Lisa, Don, Jr. and Timothy **affiliations** Committee for the Needs of Children; Bureau of Missing Children, Inc.; Palm Beach County Traffic Safety Project Committee; Redi Nurse Advisory Board; Sterling Christian Corporation Boys Home; past treasurer and board member of Christian Manors, Inc. (Senior Citizens Home in West Palm Beach); past member of Boy Scouts of America **legislative service** elected to the Senate in 1974, reelected

subsequently, chairman of Palm Beach County Legislative Delegation, 1982 **other public service** past member of Executive Democratic Committee, Palm Beach County; member of local Democratic Clubs, Palm Beach County; Florida Delegate, Democratic National Convention, 1972; Florida Delegate, Democratic National Mini-Convention, Kansas City, MO, 1974; chairman of Select Subcommittee on Division of Youth Services, 1975; National Conference of State Legislatures, State-Federal Relations Assembly, Committee on Human Resources, 1977; Florida Crime Prevention Commission Advisory Council; member of State Board of Education Task Force on Migrant Education, 1979; Interstate Migrant Education Council; Public Health Unit Subcouncil; member of Primary Education (PREP) Council, 1979-81 **highlights** Florida Personnel and Guidance Association Outstanding Legislator Award; Palm Beach County Classroom Teachers Association plaque for Services to Public Education; Florida Wildlife Federation, Special Service Award; Palm Beach County School Board, Certificate of Appreciation for Advancing Education; Florida PTA "Appreciation Award for Outstanding Contribution to PTA and Children of Florida"; Florida Association of Home Health Care Agencies, Legislator of the Year Award, 1983; Property Appraisers Association of Florida, Outstanding Member of the Florida Senate, 1986 **military service** U.S. Air Force **church** Baptist **recreation** fishing, hunting and football **addresses** (district) 2101 South Military Trail, Suite B, West Palm Beach 33415 (Tallahassee) 336 Senate Office Building, 32399-1100 **telephones** (district) 305/964-6464 (Tallahassee) 904/487-5091.



W. D. Childers
Democrat, District 1

Businessman **born** November 25, 1933 in Okaloosa County **education** Florida State University, B.S., 1955 **wife** Ruth A. Johnson of Wakeeney, KS **children** Gail, Jeanna, Karen and Marvel **affiliations** Lions Club; Farm Bureau; Ferry Pass Lodge 348 **legislative service** elected to the Senate in 1970, reelected subsequently, President, 1981-82 **highlights** "Most Effective in Debate," 1975, 1976, 1980, "Most Effective in Committee," 1978, runner-up in 1979, "Most Effective Member of the Senate," 1979 (Allen Morris Awards); Florida Credit Union League, Inc., "Outstanding Legislative Service Award," 1973-79; Legislator of the Year

for Outstanding Service to Vision Care in the State of Florida, 1975; Unified Sportsmen Service Award, 1977-79; Associated Builders and Contractors of Florida, Inc., "Legislator of the Year Award," 1980; Jaycees Good Government Award, 1980; Kiwanis Club 59th Annual Civic Award, 1981; Florida Blue Key Honorary Membership, 1981; Pensacola Civitan Club 1980 citation for Outstanding Civic Service in the Promotion of Good Citizenship, 1981; taught high school science and mathematics in Santa Rosa County before going into private business **church** Baptist **recreation** fishing, hunting and camping **addresses** (district) 2869 Michigan Avenue, Pensacola 32506 (Tallahassee) 211 Senate Office Building, 32399-1100 **telephones** (district) 904/944-3900 (Tallahassee) 904/487-5000.



Robert B. (Bob) Crawford
Democrat, District 13

Owner of real estate and securities investment firm; property management—ranch, citrus and commercial **born** January 26, 1948 in Bartow **education** University of Miami; debate team; Delta Sigma Rho, national forensic honorary **wife** Nancy Sue Caswall of Bartow **children** Robert Bruce, IV and Kristin Nicole **affiliations** past state director of Jaycees; Kiwanis; past vice president of Young Democrats of Polk County; past member of Polk County Criminal Justice Task Force; board of directors, Polk County Coalition for Children and Youth, 1980-84; member, board of directors, Winter Haven Hospital Foundation Board 1981-82; 1983 campaign chairman, Division 10 of the American Heart Association which includes Polk, Hardee and Highlands Counties; Polk Community College Foundation; Career Development Center for Vocational Education, advisory committee **legislative service** House of Representatives, 1976-82; elected to the Senate in 1982, reelected subsequently **other public service** administrative assistant to Attorney General, 1975-76 **church** Baptist **recreation** tennis and boating **addresses** (district) P.O. Box 9445, Winter Haven 33883 (Tallahassee) 318 Senate Office Building, 32399-1100 **telephones** (district) 813/299-6759 (Tallahassee) 904/487-5044.



Ander Crenshaw
Republican, District 8

Investment banker **born** September 1, 1944 in Jacksonville **education** University of Georgia, A.B., 1966; University of Florida, J.D., 1969; Rhodes Scholarship candidate; varsity basketball; Sigma Alpha Epsilon; Phi Delta Phi legal fraternity **wife** Katharine Kirk of Jacksonville **children** Sarah and Alex **affiliations** Florida Bar Association; Jacksonville Committee of 100; Jacksonville Area Chamber of Commerce; Florida Chamber of Commerce; Meninak Club of Jacksonville; past president of Sigma Alpha Epsilon Alumni Association of Jacksonville; past board member of Regional Board of Directors of Young Life; Executive Board of Directors of Big Brothers; Board of Directors of Multiple Sclerosis Society; Board of Directors of Learn to Read, Inc.; Fellowship of Christian Athletes; Jacksonville Jaycees; Jacksonville Quarterback Club; Youth Committee of the Y.M.C.A.; United Way Campaign **legislative service** House of Representatives, 1972-78; elected to the Senate, April 1, 1986, reelected November 4, 1986 **other public service** Florida Ethics Commission, 1983-85; Republican State Committeeman for Duval County, 1984-86 **highlights** founder and first president of Campus Crusade for Christ chapter at University of Florida, 1966 **church** Christian Family Chapel **recreation** tennis, golf and snow skiing **addresses** (district) 3733 University Blvd., W., Suite 117, Jacksonville 32217 (Tallahassee) 212 Senate Office Building, 32399-1100 **telephones** (district) 904/733-8888 (Tallahassee) 904/487-5027.



Timothy D. (Tim) Deratany
Republican, District 16
Republican Floor Leader

Businessman **born** October 19, 1939 in Detroit, MI. Moved to Florida in 1947 **education** Brevard Community College; Eckerd College **wife** Andrea Green of Indialantic **children** Brooke M. and Todd C. **affiliations** Chamber of Commerce; Lions Club; Community School Advisory Board, chairman, 1978; Governor's Highway Safety Council **legislative service** House of Representatives 1978-1984; elected to Senate April 10, 1984, reelected subsequently **other public service** Councilman, 1969-71, Mayor, Indialantic, 1971-77; Brevard County Beach Erosion Advisory Committee, 1970-78; Brevard League of Municipalities, President, 1974; Melbourne/Indialantic Causeway Beautification Committee, Chairman, 1976-78 **highlights** Brevard League of Municipalities, life time honorary membership; Florida League of Cities, Prominent Personality, 1979; Apartment Association Legislative Award, 1984; Education TIGER Award, 1985; Florida Ophthalmology Society Legislative Award, 1985 **church** Congregational **recreation** tennis, golf, hunting and fishing **addresses** (district) 1300 Pinetree Drive, Indian Harbour Beach 32937 (Tallahassee) 342 Senate Office Building, 32399-1100 **telephones** (district) 305/777-0032 (Tallahassee) 904/487-5053.



Fred R. Dudley
Republican, District 38

Attorney **born** November 8, 1944 in Fort Myers **education** University of South Florida, B.A.; Stetson College of Law, J.D., 1968; Phi Alpha Delta legal fraternity **wife** Carol F. Matthews of Fort Myers **children** Charlie and Chris **affiliations** Attorney's Title Guaranty Fund; Connie Mack Tent, Saints and Sinners; American, Florida and Lee County Bar Associations; admitted to practice, United States Supreme Court; Tropical Masonic Lodge #56, Fort Myers; Fort Myers York Rite Bodies; Araba Shrine Temple; Cape Coral Shrine Club, charter member; Fort Myers Order of Eastern Star; Board of Trustees, Cape Coral Philanthropic Foundation, secretary; Cape Coral High School Advisory Board; Lee County Estate Planning Council; Cape Coral Construction Industry Association; Cape Coral YMCA Advisory Council; Vice Chairman, Continuing Education Committee, Florida Bar, 1982; Director, Community Associations Institute **legislative service** House of Representatives, 1982-86; elected to the Senate in 1986 **other public service** Past Municipal Judge, City of Cape Coral; past member, Cape Coral Planning and Zoning Commission, 1975-77; past instructor, Edison Community College and American Institute of Banking; past lecturer, Florida Legal Assistants and The Florida Bar, Seventh Annual Condominium Seminar; past director, Legal Staff, Araba Shrine Temple; past chairman, United Way of Lee County and Cape Coral Hospital, Board of Trustees; lecturer, Florida Bar; honorary trustee, Cape Coral Hospital; member, Florida Marketable Record Title Act Study Commission, 1985 **highlights** Freshman of the Year nominee, 1983; Chevilar Degree, Order of the DeMolay; Florida Optometric Association Legislator of the Year, 1984 **publications** Seventh Annual Condominium Seminar, *Time Sharing From a Lender's Perspective*, The Florida Bar; *The Surviving Spouse, A Legal Guide*, Studio II Productions; *The Personal Representative, A Legal Guide*, Studio II Productions **church** Episcopal **recreation** sailing, book and currency collecting **addresses** (district) 1708 Cape Coral Parkway, Cape Coral 33904 (Tallahassee) 258 Senate Office Building, 32399-1100 **telephones** (district) 813/542-1324 (Tallahassee) 904/487-5124.



Pat Collier Frank
(Mrs. Richard Harlan)
Democrat, District 23

Legislator and business economist **born** November 12, 1929 in Cleveland, OH. Moved to Florida in 1936 **education** University of Florida, B.S.B.A., 1951; Georgetown University School of Law; Hall of Fame Mortar Board **husband** Richard Harlan Frank **children** Stacy, Hillary and Courtney **affiliations** Athena Society; Tampa Bay Committee on Foreign Relations; Chi Omega Sorority; Florida Women's Network **legislative service** House of Representatives, 1976-78; elected to the Senate in 1978, reelected subsequently **other public service** Hillsborough County School Board, 1972-76, chairman, 1975-76; City of Tampa Election Board; Region VIII Drug Advisory Council, chairman; Region VI Health and Rehabilitative Services Advisory Council; Florida Phosphate Land Reclamation Study Commission; Special Ambassador for the United States to the Independence of St. Vincent's Island, 1979; Southern Regional Education Board (SREB), 1979-1990, Legislative Advisory Council (SREB), Vice Chairman, 1986-present; National Committee of Advanced Leadership Program Services (ALPS), 1981-82; Assessment Policy Committee of National Assessment of Educational Progress (NAEP), Vice Chairman, 1981-present; Joint Executive and Legislative Task Force for Teacher Quality Improvement, 1982; Governor's Commission on Secondary Schools, 1982-83; National Science Foundation Task Group on Governments of the National Science Board Commission on Precollege Education in Mathematics, Science and Technology, 1982-84; Juvenile Justice and Delinquency Prevention Task Force, 1982-85; Member, Florida Council on Far East Research and Development, 1986; Georgetown University Board of Regents, 1986-present **highlights** officer of the first class admitting women to the University of Florida, 1947; first woman admitted to Georgetown University Law School, 1951; selected by House leaders as the most promising freshman legislator of the 1977 legislative session; NEA-FTP, 1977; TIGER Award, 1977, 1978, 1979 and 1981; first woman to receive award as "Most Effective First Term Member of the House," 1978 (Allen Morris Award); runner-up as "Most Valuable Member of the House," 1978 (St. Petersburg Times Award); Kappa Delta Pi Educator of the Year, 1979; Florida "NOW Award," 1979; Tampa Jaycees "Good Government Award," 1979; Florida Council of Handicapped Organizations Award, 1980, 1985; Women in Communications "Athena Award," 1980; Florida Association of School Administrators, 1981; Phi Delta Kappa, 1981; Delta Kappa Gamma Honorary Membership; Hillsborough County Council of PTA's Honorary Life Membership; Florida Association District Instructional Materials Administrators, 1981; National Society to Prevent Blindness, 1981; Vocational Education Award, 1982; City of Tampa Office of Community Relations Human Rights Award, 1983; AAUW, 1983; Outstanding Contribution to Florida Democratic Party, 1983; Outstanding Service Award, Florida Federation B.P.W., 1983; "Zonta Club Woman of the Year," 1984; Florida State Museum Award for Conserving Florida's Fossil Heritage, 1984; Science and Mineral Club Award for support of Florida's Paleontology Heritage, 1984; Florida Grape Growers Award, 1984; Mt. Zion A.M.E. Church Humanitarian Service Award, 1984; National Federation of Business and Professional Women's Clubs, Woman of Achievement Award, 1984; Humanitarian Award, Judeo-Christian Clinic, 1984; League of Conservation, 1985; Outstanding Service Award, USF, 1985; Kidney Foundation Distinguished Service Award, 1985; Best Public Servant Award, National Association of Industrial Office Parks, 1985; Florida Phosphate Council, 1985; Tampa Bay Regional Planning Council, 1985; League of Cities, 1985; Citizen of Year, NASW, 1985; Outstanding Legislative Effectiveness Award, Florida Engineering Society, 1986; Chapter Legislative Award, Florida Chapter of the Sierra Club, 1986; Award of Merit, American Planning Association, 1986 **church** Episcopal **recreation** music and needlepoint **addresses** (district) 401 S. Albany Ave., Tampa 33606 (Tallahassee) 312 Senate Office Building, 32399-1100 **telephones** (district) 813/272-6614 (Tallahassee) 904/487-5075.



Arnett E. Girardeau, D.D.S.
Democrat, District 7

Dentist, merchant **born** July 15, 1929 in Jacksonville **education** Howard University, B.S., 1952, D.D.S., 1962; post graduate work at Wayne State University and Fisk University; received three awards for excellence in areas of specialty **wife** Matilda Carolyn Lee of New Hill, NC **children** Arnetta and Arnett Elysus, Jr. **affiliations** Florida Medical, Dental and Pharmaceutical Association; former member, Jacksonville Dental Society; Academy of Dentistry, board of directors; Dental Society, Dental Laboratories Committee; Florida State Dental Association; Eartha M. White Nursing Home, board of directors; Florida Junior College Dental Assistant's Advisory Committee; Northwest Council Chamber of Commerce, Board of Governors; Howard University Alumni President; Jacksonville Museum of Arts and Sciences, board of trustees; Florida/Africa Trade Development Council, board of directors **legislative service** House of Representatives, 1976-82; elected to the Senate in 1982, reelected subsequently, chairman, Duval Delegation, 1982-84 **other public service** vice president of NAACP, 1962-66; board of directors of Greater Jacksonville Economic Opportunities, 1967-72; Mayor's Task Force on East Jacksonville Civil Disorder, 1969; president and vice president of United Jax, 1969-70; president of Community Urban Development Council, 1969-72; Jacksonville Housing Authority, 1970-74; president of Black Community Coalition, 1970-75; Florida Human Relations Commission, 1971-73; Duval co-coordinator of McGovern for President, 1972; co-chairman of Jacksonville Home Town Plan, Advisory Committee, 1972-75; Council of Leadership for Community Advancement, 1973; board of directors of Traveler's Aid, 1973-74; Mayor's Ad Hoc Committee on Fuel Crisis, 1974; Citizens Against Crime, Steering Committee, 1974-75; executive committee, Jacksonville Council on Citizens Involvement, 1974-75; Kansas City Mini Convention, chairman of District 9 Committee, 1975; State Action Council, 1975; at large member of State Central Committee of Democratic Party; chairman of Affirmative Action Committee, 1976; Florida Advisory Committee to the Federal Civil Rights Commission; Jacksonville Metropolitan Criminal Justice Advisory Council; past chairman of Corrections, Justice Model and Correctional System Subcommittee; member, Governor's Advisory Council on Minority Enterprise Development; founding member, vice-chairman 1984, Florida Conference of Black State Legislators **highlights** American Spirit Honor Medal for outstanding achievement in leadership, 1953; Howard University College of Dentistry, instructor, 1962; Jacksonville Urban League Award, 1972; Gallant Ladies of Pittsburgh "Award for Work in Education Advancement," 1973; Edward Waters College Award, 1973; Jacksonville Community Relations Commission "Award for Outstanding Service," 1974-75; Phi Delta Kappa National Sorority "Award for Dedicated Service in Civic Affairs," 1976; Florida Human Relations Commission Legislative Achievement Award, 1977; Florida Medical, Dental and Pharmaceutical Award, 1977; Florida Junior College Student Government Award, 1978; State Action Council Award, 1978; Jacksonville Area Sickle Cell Association Honors, 1979; Edward Waters College, Annual Founders' Day and Alumni Award, 1980; Duval Teachers United Certificate of Appreciation, 1980; Florida Dental Association "Outstanding Contribution to the Legislature," 1980; Sickle Cell Foundation, Inc., Tampa, Leadership in Community Involvement, 1980; Hospice of Northeast Florida, 1981; Florida Chiropractic Association "Outstanding Contribution to Quality Health Care for the Citizens of Florida," 1982; Florida Nurserymen and Growers Association, Appreciation Award, 1982; National Handicapped Awareness Award, 1982; Rotary International, Hilliard, Certificate of Appreciation, 1982; Jacksonville Frontiers International Award, 1983; LINKS, Inc., Outstanding Service Award, 1983; Bethune-Cookman College, Outstanding Contributions to Education and Civic Affairs Award, 1983; Jacksonville Chamber of Commerce, Outstanding Service Award, 1984; Interfaith Council of Jacksonville, Public Service Award, 1984; FAMU Meritorious Achievement Award, 1984; Howard University

Alumni Achievement Award, 1984 **historical** Richard L. Brown, great-uncle, last black from Duval County to serve in the Florida Legislature during Reconstruction, 1881-83 **military service** U.S. Army, Signal Corps **church** Methodist **recreation** fishing, boating and golf **addresses** (district) 26 East Sixth Street, Jacksonville 32206 (Tallahassee) 324 Senate Office Building, 32399-1100 **telephones** (district) 904/354-3369 (Tallahassee) 904/487-5024.



Jack D. Gordon
Democrat, District 35

Public Policy Institute Director, FIU **born** June 3, 1922 in Detroit, MI. Moved to Florida in 1940 **education** University of Michigan, B.A., 1942, Phi Epsilon Pi **children** Andrew, Deborah and Jonathan **affiliations** member of National Governing Council, American Jewish Congress; past president of South Florida Division, American Friends of Hebrew University; former director of National Association of Better Business Bureaus; former director of National Council of Senior Citizens; former state chairman of Concerned Democrats of Florida; honorary member of United Steelworkers of America **legislative service** elected to the Senate

in 1972, reelected subsequently, President Pro Tempore, 1982-84 **other public service** chairman and member of Miami Beach Housing Authority, 1949-56; housing finance consultant to U.S. State Department in Latin America and Africa, 1959-71; Dade County Board of Public Instruction, 1961-69; housing finance consultant to United Nations Technical Assistance Program, 1963-70; Dade County Economic Opportunity Program Board, 1964-67; U.S. Advisory Committee on State Departments of Education, 1965-70; Governor's Commission on Quality Education in Florida, 1966; U.S. Advisory Panel on Teacher Training, 1968-71; chairman of Miami Beach Tourist Development Authority, 1971-72; Dade County Community Relations Board, 1972 **highlights** *Who's Who in America*; Veterans of Foreign Wars Americanism Award; Dade County Classroom Teachers Association School Bell Award; First Unitarian Church Living Religion Award; Miami Beach Taxpayers Association Outstanding Citizens Award; Costa Rican National Institute of Housing citation for encouraging savings and home ownership; American Civil Liberties Union Stanley Milledge Award, 1973; Miami Beach Chamber of Commerce Man of the Year, 1975; "Most Effective in Committee," 1976, "Most Effective in Debate," 1983, 1984, runner-up, 1980, 1981, 1985, "Most Effective Member of the Senate," runner-up, 1981 (Allen Morris Awards); Florida International University Distinguished Service Award, 1978; TIGER Award, 1978-79; Nelson Poynter Civil Liberties Award, 1979; Dade County National Organization for Women Gwendolyn S. Cherry Award, 1979; National Council of Jewish Women Hannah G. Solomon Award, 1980; FIU Distinguished Visiting Lecturer, Political Science, 1982-83 **military service** U.S. Army, combat infantryman **church** Jewish **recreation** walking **addresses** (district) 2555 Collins Avenue, Suite 405, Miami Beach 33140 (Tallahassee) 308 Senate Office Building, 32399-1100 **telephones** (district) 305/531-7297 (Tallahassee) 904/487-5112.



John A. Grant, Jr.
Republican, District 21

Attorney **born** July 12, 1943 in Tampa **education** University of Florida; University of South Florida, B.A., 1964, honor student; Distinguished Alumnus, 1978; Florida State University, M.S., 1965; Stetson University, J.D., 1968, Dana Scholar, Advocacy Award; Phi Alpha Delta; Omicron Delta Epsilon; Pi Sigma Epsilon; Pi Sigma Alpha, honorary member **wife** Beverley Code of Tampa **children** John A., III, Jeanette E. and James W. **affiliations** Egypt Temple Shrine; 32nd degree Mason; Tampa Consistory of Scottish Rite; Temple Terrace Masonic Lodge; American and Florida Bar Associations; American Judicature Society; North Tampa Kiwanis Club, past president; University of South Florida Alumni Association, past national president and national board of directors; University of South Florida Foundation, Board of Directors; Florida State University Alumni Association; Stetson Lawyers Association; United States Small Business Administration, Advisory Board **legislative service** House of Representatives, 1980-86; elected to the Senate in 1986, Hillsborough County legislative delegation, co-chairman, 1986-present **other public service** Lakeland City Manager Assistant, 1964; Florida Senate Administrative Assistant, 1966-67; Assistant State Attorney, 1970-72; Tampa Housing Authority, General Counsel, 1972-79; Florida Ethics Commission, 1974-78, vice chairman, 1976-78; appointed by President Reagan to the Graduate Fellowship Board of the U.S. Department of Education, 1985-present **highlights** Boy Scouts of America God and Country Award, 1960; Florida State University Institute of Governmental Research, 1965; University of South Florida American Studies Instructor, 1965-67; United States Peace Corps Instructor and Coordinator for International Studies, 1966; University of Tampa Business and Economics Lecturer, 1966; University of South Florida Law and Business Administration Assistant Professor, 1969-70, part-time lecturer in Business Law and Finance, 1971-73; North Tampa Kiwanis Club President's Award, 1969; Hillsborough Community College Business Law lecturer part-time, 1970; listed in *Outstanding Young Men of America*, 1970 and 1972; *Who's Who in the South*; *Who's Who in Religion*; Greater Tampa Chamber of Commerce President's Award, 1972; Tampa Christian Academy Board of Directors, 1973-79, chairman, 1975-76; Florida Southern College Board of Trustees and Executive Committee, 1974-80; Asbury Theological Seminary, Wilmore, Kentucky, Board of Trustees, chairman of Development Committee, and Executive Committee, 1974-87; Shriners Hospital for Crippled Children, Tampa Unit, Board of Governors; Stetson University College of Law, Board of Trustees, 1985-present; Spessard Holland Humanitarian Award, 1975; Ruth Award for Legislative Effectiveness, 1981 and 1986; Unified Sportsmen of Florida, Outstanding Legislator Award; Conference of County Judges, Legislative Appreciation Award **church** Methodist, Lay Leader and chairman of Administrative Board; former member, Tampa District and Florida Conference United Methodist Board of Trustees; member, United Methodist General Board of Laity, 1968-72; Florida Conference, Board of Laity, 1968-74; General Board of Laity, member, 1976-80; United Methodist Laymen's Foundation Board of Directors, vice chairman, 1968-72; Florida Conference Laymen's Retreats at Leesburg, director, 1972-85; Methodist Hour International Board of Directors, 1972-78, vice chairman; Florida Conference, Certified Lay Speaker; Florida Conference United Methodist Men, president, 1976-85; United Methodist Church General Conference, delegate, 1980; member, American Bible Society National Board of Managers **recreation** tennis, travel, flying and photography **addresses** (district) P.O. Box 24268, Tampa 33623 (Tallahassee) 356 Senate Office Building, Tallahassee 32399-1100 **telephones** (district) (813) 272-5957 (Tallahassee) 904/487-5068.



Mary R. Grizzle
Republican, District 20

Homemaker; investments **born** August 19, 1921 in Lawrence County, OH. Moved to Florida in 1950 **education** Portsmouth, Ohio Interstate Business College **husband** Ben F. Grizzle (deceased); Charles H. Pearson of St. Petersburg **children** Henry, Polley, Lorena, Mary Alice, Betty and Jeanne **affiliations** past president of Anona PTA; Altrusa Club; Woman's Club; League of Women Voters; Largo Business and Professional Women; past chairman of Florida Commission on Status of Women; Honorable Order of Kentucky Colonels; president of Florida Federation of Republican Women, 1965-69; Clearwater Woman's Club; National Order of Women Legislators; honorary member of Alpha Phi Chapter, Delta Kappa Gamma **legislative service** House of Representatives, 1963-78; chairman of Pinellas Legislative Delegation, 1964-66, Minority Leader Pro Tempore, 1974-78; elected to the Senate in 1978, reelected subsequently, chairman of Pinellas Legislative Delegation, 1979-80, 1984-85 **other public service** former town commissioner; former member of Pinellas County Planning Council **highlights** Largo Business and Professional Woman's Club's "Outstanding Woman of the Year" for civic participation, 1966; listed in *Personalities in the South* and *Who's Who in American Women*; co-authored and published *Thimbleful of History*; named by *St. Petersburg Times* as "One of Ten Outstanding Women in 1966"; "Friend for Life" of Suncoast Girl Scout Council, 1973; Pinellas Planning Council Service Award, 1974; Florida Association of Community Colleges Legislative Service Award, 1974 and 1977; Pinellas Juvenile Welfare Board legislative award for "Outstanding Service to Children," 1976; Pinellas County Classroom Teachers Association Outstanding Service to Education, 1978; Florida Rehabilitation Association's Achievement Award for Outstanding Service to the Handicapped, 1979; named honorary lifetime member of Pinellas County School Food Services for dedication to the School Food Program, 1979; FTP-NEA "Friend of Education Award," 1979 and 1984; Largo Junior Women's Club award, "Woman of the Year," 1980; Outstanding Elected Official, Republican Club of Greater Seminole, 1980; Clearwater BPW, "Career Woman of the Year," 1981; honorary degree, Associate of Arts for College and Community Service, St. Petersburg Junior College, 1982; Florida League of Hospitals "Outstanding Legislator", 1982; Special Honor, St. Petersburg Junior College "Mary R. Grizzle Dental Hygiene Program," 1982; Soroptimist International, Women Honoring Women Award for Government, 1984; Tampa Bay Regional Planning Council Award; St. Petersburg Junior College Award, Latchkey Services for Children Circle of Caring Award, 1985; Outstanding Honoree PACE Award, Outstanding Elected Official, Republican Club of Greater Seminole; "Most Effective Legislator in Committee," 1986 (Allen Morris Award); Florida Association of Community Colleges "Most Effective Legislator," 1986 **church** Episcopal **addresses** (district) 2601 Jewel Road, Suite C, Belleair Bluffs 33540 (Tallahassee) 340 Senate Office Building, 32399-1100 **telephones** (district) 813/584-8465 (Tallahassee) 904/487-5065.



Mattox S. Hair
Democrat, District 9

Attorney **born** January 18, 1938 in Coral Gables; reared in Live Oak **education** Florida State University, B.S., 1960; student body vice president and president; president of Kappa Alpha fraternity; FSU Gold Key; FSU Hall of Fame; permanent class president and outstanding senior man, 1960; *Who's Who in American Colleges and Universities*; University of Florida, J.D., 1964; Phi Delta Phi legal fraternity **wife** Betty Winstead of Jacksonville **affiliations** Fellowship of Christian Athletes, Jacksonville chapter; American, Florida and Jacksonville Bar Associations; Chamber of Commerce; Sons of American Legion; Rotary Club of Jacksonville **legislative service** House of Representatives, 1972-74; elected to the Senate in 1974, reelected subsequently **highlights** legislative aide, 1957 and 1959 sessions; assistant attorney general, 1964-65; Jacksonville Jaycees "Good Government Award," 1974; "J. Turner Butler Outstanding Member of the Duval Delegation Award," 1977 and 1979 **military service** U.S. Army, first lieutenant; Florida National Guard, captain **church** Baptist **recreation** racquetball and hunting **addresses** (district) 1200 Gulf Life Drive, Suite 900, Jacksonville 32207 (Tallahassee) 322 Senate Office Building, 32399-1100 **telephones** (district) 904/359-6408 (Tallahassee) 904/487-5030.



Wayne Hollingsworth
Democrat, District 5

Legislator, farmer, mobile home park owner **born** February 14, 1938 in Lake City **education** University of Miami; Arkansas State University, B.S., 1961 **child** Robert Wayne, Jr. **affiliations** former member Board of Directors, Lake City Jaycees **legislative service** House of Representatives, 1970-72, 1976-86, Majority Whip, 1980-82, 1982-84; elected to the Senate in 1986 **other public service** former teacher, Columbia County School System, 1962-70; director, Clay Electric Co-op; member, State Tobacco Advisory Board; past vice president, Columbia County Education Association; former member, Advisory Committee, North East Florida State Hospital **highlights** Lake City Jaycees Key Man Award; Florida Conservative Union Award, 1979-80; Florida Farm Bureau Outstanding Service Awards, Columbia County, 1979, Madison County, 1980 **church** Baptist **addresses** (district) Rt. 7, Box 472, Lake City 32055 (Tallahassee) 224 Senate Office Building, 32399-1100 **telephones** (district) 904/752-4304 (Tallahassee) 904/487-5017.



Kenneth C. (Ken) Jenne
Democrat, District 32

Attorney **born** December 1, 1946, in New Haven, CT. Moved to Florida in 1956 **education** Palm Beach Junior College, A.A., 1966; Florida Atlantic University, B.A., 1968; Florida State University College of Law, J.D., 1972; Fort Lauderdale College, Doctor of Humane Letters (Honorary), 1978; Southeastern College of Osteopathic Medicine, Doctor of Laws, 1986; Phi Alpha Delta, International; Pi Sigma Alpha; Sigma Phi Epsilon; Pi Alpha Alpha; Phi Rho Pi **wife** Caroline Maslanka of St. Petersburg Beach **children** Evan Boyd and Sarah Elizabeth Anne **affiliations** St. Thomas of Villanova University, Board of Trustees; Community Service Council,

Board of Directors; South Florida American Red Cross, Board of Directors; American, Florida and Broward Bar Associations; National District Attorneys, former member; Florida Prosecuting Attorneys Association, former member **legislative service** elected to the Senate in 1978, reelected subsequently **other public service** Executive director of Broward County Charter Commission, 1974; Broward County Commission, 1975-78, chairman, 1976-77; Governor's Council on Organized Crime; Florida High Technology and Industry Council; Far East Council; Columbus Hemispheric Trade Commission **highlights** Human Service Advocates of Broward County, Legislator of the Year, 1982; National Jewish Hospital/National Asthma Center, Humanitarian Award, 1983; "Most Effective Member of the Senate," 1984, 1986, runner-up, 1985 (Allen Morris Award); Hollywood Civitan Club Citizen of the Year Award; Florida Pediatric Society, Samuel P. Bell, II Award for Outstanding Legislator, 1985; Broward County Commission Leadership Award, 1985; Children's Home Society Legislative Award, 1986; Florida Consumer Federation Leadership Award, 1986 **military service** U.S. Army Reserve **church** Episcopal, Vestry member **addresses** (district) 1926 Tyler Street, Hollywood 33020 (Tallahassee) 248 Senate Office Building, 32399-1100 **telephones** (district) 305/925-4455 (Tallahassee) 904/487-5103.



Toni Jennings
Republican, District 15
Republican Leader

President of family general contracting firm; realtor and mortgage broker **born** May 17, 1949 in Orlando **education** Wesleyan College, B.A., 1971; Rollins College; Phi Kappa Phi; Kappa Delta Epsilon; Mortar Board; Honor Court **affiliations** Orlando-Winter Park Board of Realtors; Associated Builders and Contractors; Central Florida Builders Exchange; Republican Women's Club of Winter Park; Winter Park Republican Women's Federated Club; Delta Kappa Gamma Society International **legislative service** House of Representatives, 1976-80; elected to the

Senate in 1980, reelected subsequently, chairman, Orange County Legislative Delegation, 1980-82, Republican Leader, 1984, Republican Leader Pro Tempore, 1982-84, 1984-86 **highlights** Orlando Chamber of Commerce Central City Committee, Outstanding Woman in Government, 1977; International Women's Year Conference, Florida delegate, 1977; Associated Builders and Contractors of Florida, Legislator of the Year, 1978; Florida Federation of Humane Societies, Meritorious Service, 1979; Florida Restaurant Association Special Commendation, 1979; Homebuilders Association of Mid-Florida, Outstanding Service, 1980; Florida League of Cities Prominent Personality of the Month, June 1980; Orange County Young Republican Club, Legislator of the Year, 1980-81; Outstanding Young Women in America, 1980-82; Wesleyan College, Distinguished Alumni Award, 1981; Women for Responsible Legislation, Freedom Award

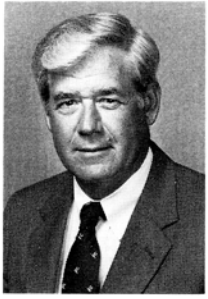
for Excellence in State Government, 1982; Florida Sheriffs Association Award for Consistent Support of Effective Law Enforcement, 1983; Missing Children Help Center, Tampa Chapter, Outstanding Efforts for the "Voice of the Missing Child," May 1983; Retail Grocers Association of Florida, Outstanding Service to the Florida Food Industry and its Customers, October 1983; Florida Chiropractic Association, D.I. Rainey Legislative Award for Outstanding Contribution to Quality Health Care for the Citizens of Florida, 1983 and 1986; Florida Medical Association and the Physicians of Florida, Award in Appreciation for Efforts in the 1983 Florida Legislature to Stabilize Health Care Costs Through Tort Reform, November 1983; Orange County Republican Executive Committee, Outstanding Republican Woman of the Year, 1983; City of Apopka, Grateful Appreciation for work on behalf of the City of Apopka, August 1984; Florida Association of Realtors Legislator of the Year, 1984 **historical** Jack Jennings, father, chairman of Orange County School Board; General Edward Martin, great uncle, Governor of Pennsylvania; Charles H. Jennings, great grandfather, member of Virginia Legislature **church** Episcopal **recreation** bicycling **addresses** (district) 1032 Wilfred Drive, Orlando 32803 (Tallahassee) 348 Senate Office Building, 32399-1100 **telephones** (district) 305/898-1861 (Tallahassee) 904/487-5184.



Bob Johnson
Republican, District 25

Attorney **born** September 1, 1934 in Akron, OH. Moved to Florida in 1946 **education** Florida State University, B.S., 1958; Duke University Graduate School; University of Florida College of Law, J.D., 1964; Florida State University: University Hall of Fame, Omicron Delta Kappa, Gold Key, *Who's Who in American Universities*, Sigma Chi; University of Florida: president, Phi Alpha Delta **wife** Patricia Ann Edenfield of Sarasota **children** Jeannene Elizabeth Mironack, Cecilia Ann Griffin, Michael and Kathryn Rebecca **affiliations** President, Sarasota Kiwanis Club, 1978; Executive Committee Chairman, New College Foundation;

Vice President, Asolo Theatre, Inc.; Sarasota Opera Association, County Fair Board; Mote Marine Laboratory and Foundation Boards; Sarasota County Farm Bureau; Cattlemen's Association; Chairman, Florida Arts Council, 1985-87; Sarasota County and Florida Bar Associations **legislative service** House of Representatives, 1970-76, 1982-84; elected to the Senate in 1984 **highlights** Nominated Outstanding First Year Member, 1971 (*Jacksonville Times-Union*); Arts and Culture Legislator of the Year, 1973; Florida School Boards Association Legislator of the Year for Education Award, co-winner 1973, winner 1974; Phi Delta Kappa Sarasota County Lay Citizen of the Year for Education; nominated Most Valuable Member of the House, 1974 (*St. Petersburg Times*); Florida Community Colleges Legislative Service Award Legislator of the Year for Vocational-Technical Education, 1984; Secretary of State Florida Arts Recognition Award, 1984; Florida Psychological Association Legislator of the Year Award, 1985; Florida Adult Education Association Legislative Award, 1985, 1986; Florida Association of School Administrators Gavel of Authority Award, 1985, 1986; League of Women Voters of Sarasota County Very Important Political Personage Award, 1986; Manasota-88 Legislator of the Year Award, 1986 **military service** United States Air Force Reserve, Captain; Distinguished Unit Awards from Presidents Eisenhower and Kennedy **church** Episcopal **recreation** swimming, fishing, scuba diving, sailing, camping and hunting **addresses** (district) 27 South Orange Avenue, Sarasota 33577 (Tallahassee) 254 Senate Office Building, 32399-1100 **telephones** (district) 813/365-4628 (Tallahassee) 904/487-5081.



George Grier Kirkpatrick, Jr.
Democrat, District 6

Real estate, investments **born** December 24, 1938 in Gainesville
education Davidson College, B.S., 1962; Sigma Chi **wife** Monika
 Godzewski of West Berlin, Germany **children** Catherine Grace and
 George Grier, III **affiliations** past president, vice president and secretary
 of Home Builders Association of Gainesville; past area vice president and
 director of Florida Home Builders Association; chairman of Committee
 on Housing Costs and Building Codes; chairman of Committee on HUD;
 chairman of Committee to Develop a State Housing Demand Forecasting
 Model; life director of National Home Builders Association; chairman of

Coordinating Committee for National "Sensible Growth" Environmental Committee; past president
 and vice president of Santa Fe Community College Endowment Corporation; United States,
 Florida, Lafayette and Putnam County Chambers of Commerce; vice president for Economic
 Development and past director of the Gainesville Chamber of Commerce; past chairman of
 Gainesville area Chamber of Commerce Committee of 100; charter graduate and Seminar
 Speaker, Leadership Gainesville; Crime Trac, Inc.; Unified Sportsmen of Florida; Alachua County
 Cattlemen's Association; Common Cause; National Riflemen's Association; Gator Boosters and
 Scholarship Boosters; Gator Touchdown and Tip-Off Clubs; past vice president of Jaycees; Florida
 Jaycee Ambassador to Germany; past director of United Fund; vice chairman of Gainesville Drug
 Control Foundation; past director of YMCA; chairman of area Boy Scouts Fund Drive; Cousteau
 Society; Ducks Unlimited; Sierra Club; Florida Fox Hunters Association; Fellowship of Christian
 Athletes; Florida Farm Bureau; life member of Sigma Chi; National Federation of Independent
 Business; American Legion Post 16; Veterans of Foreign Wars; Alachua Lions **legislative service**
 elected to the Senate in 1980, reelected subsequently; National Conference of State Legislatures;
 National Conference of State Legislatures Committee, panelist on Hazardous Wastes (Amnesty
 Days); member National Conference of State Legislatures Committee on Agriculture, Food Policy
 and Nutrition; Southern Regional Education Board **other public service** Citizens Council on
 Budget Research, Inc.; founding member of Alachua County Research and Development
 Authority; Alachua County Housing Task Force; vice chairman of Regional Utility Board
 Economic Development Committee **highlights** University of Florida Outstanding Service Award,
 1981; Gator Medal of Honor, 1981; Ocala Lions Club Certificate of Appreciation, 1981; Florida
 Farm Bureau Outstanding Legislator Award, 1981; Gainesville Board of Realtors Honored, 1981-82;
 Marion Correctional Institution honor for Outstanding Support of the Criminal Justice System,
 1982; Florida Student Association Distinguished Service Award, 1982; "Most Effective First Term
 Senator," runner-up, 1982, "Most Effective in Committee," 1985, 1986 (Allen Morris Awards);
 Florida Home Builders Association Builder of the Year, 1982; Florida League of Hospitals
 Outstanding Legislator Award, 1982; Florida Agricultural Research Institute First Florida Arbitrator
 Award, 1982; Florida Farm Bureau Legislative Award, 1982; Alachua County Medical Society
 Certificate of Appreciation, 1983; Florida Home Builders Association Outstanding Legislative
 Leadership Award, 1983; Florida Association of Soil and Water Conservation Districts Outstanding
 Support Award, 1983; Florida Surveyors Outstanding and Dedicated Service Award, 1983; Florida
 Farm Bureau Federation Legislative Award, 1983; Florida Sheriffs Association Effective Support
 for Law Enforcement Award, 1983; Alliance of North Florida Education Employees Excellence in
 Education Legislation Award, 1983; Unified Sportsmen of Florida Outstanding Legislator Award,
 1983; Florida Medical Association and Physicians of Florida Legislative Award, 1983; Florida
 Student Association Outstanding Legislator Award, 1983; Florida International University
 Outstanding Service Award, 1983; Florida Association of Community Colleges Legislative Service
 Award, 1983-84; Florida Citrus Mutual Service Award, 1984; Florida Cattlemen's Association
 Legislative Service Award, 1984; Florida Association of Funeral Directors Legislative Service

Award, 1984; City of Gainesville Certificate of Appreciation, 1984; Gainesville Police Department
 Outstanding Support Award, 1984; Florida Aquaculture Association Distinguished Service Award,
 1984; Future Farmers of America Honorary Farmer Award, 1984; Florida State Voters League
 Legislative Service Award, 1984; Florida Academy of Family Physicians Freedom Heritage Award,
 1984; *Who's Who in the South and Southwest*, 1984; Florida Association of Home Health Agencies
 Legislator of the Year Award, 1984; Florida Fruit and Vegetable Association Outstanding
 Legislator Award, 1984; Florida Regional Councils Association Outstanding Leadership Award,
 1984; Florida Chapter of the Sierra Club Legislative Award, 1986; Chamber of Commerce Annual
 Award for leadership in economic development legislation, 1986; Florida Association of
 Community Colleges Legislative Award, 1986; Florida Chapter, National Wild Turkey Federation
 first annual C.B. McLeod Memorial Award, 1986 **military service** U.S. Army, first lieutenant,
 Military Police Corps, West Berlin, Germany, 1962-64 **church** Presbyterian **recreation** hunting,
 fishing, travel, public speaking, enology and origami **addresses** (district) 1103 N.W. 13th Street,
 Gainesville 32601 (Tallahassee) 240 Senate Office Building, 32399-1100 **telephones** (district)
 904/377-3800 (Tallahassee) 904/487-5020.



S. Curtis (Curt) Kiser
Republican, District 19

Attorney **born** June 17, 1944 in Oskaloosa, IA. Moved to Florida in 1967
education University of Iowa, B.A., 1967; Florida State University, J.D.,
 1970; Phi Delta Phi Legal Fraternity **wife** Sara M. (Sally) Hess of
 Rochester, NY **children** Jennifer Lynn and Kevin Curtis **affiliations**
 Clearwater and Palm Harbor Chambers of Commerce; Palm Harbor
 Youth Recreation League, Board of Directors; Clearwater, Tarpon
 Springs, and Pinellas Park Republican Clubs; American, Florida and
 Clearwater Bar Associations; Indian Bluff Island Civic Association,
 president, 1972-73; Greater Pinellas Young Republicans Board of
 Directors, Florida State University Law School Alumni **legislative service** House of
 Representatives, 1972-82; chairman, Pinellas County legislative delegation, 1976-77, Minority
 Leader, 1978-82; elected to the Senate in 1984 **other public service** Assistant Legal Counsel to
 Governor Kirk, 1970; Department of Community Affairs Advisory Council, 1971; Pinellas County
 Bi-Racial Committee, 1971; Associate Municipal Judge, Dunedin, 1972; Governor's Commission on
 Property Rights, 1974; National Conference of State Legislatures Committee on Fiscal Affairs and
 Oversight, chairman, 1978-79; Public Service Commission Nominating Council, 1978-82, chairman,
 1986-87; Assembly on the Legislature, chairman, 1979-81; Supreme Court Restructuring Committee,
 1985; Marketable Records Title Act Study Commission, 1985 **highlights** Dunedin Chamber of
 Commerce "Outstanding Young Man of the Year," 1972; Florida Mobile Home Owners Bureau
 Legislative Counsel, 1972 regular session; nominated as one of the Outstanding Freshman
 Members, 1973 (*Jacksonville Times-Union*); "Most Outstanding First Term Member," runner-up,
 1974 (Allen Morris Award); nominated "Most Valuable Member of the House," 1977-78 (*St.*
Petersburg Times Award) **historical** Ira Kiser, father, served twelve years as an Alderman for the
 City of Davenport, Iowa; Jean Kiser, mother, former member of Iowa Legislature **church**
 Presbyterian **recreation** hunting, swimming, fishing and bridge **addresses** (district) 121 N. Osceola
 Avenue, Suite 201, Clearwater 33515 (Tallahassee) 300 Senate Office Building, 32399-1100
telephones (district) 813/461-2788 (Tallahassee) 904/487-5062.



Richard H. (Dick) Langley
Republican, District 11

Attorney; citrus grower and real estate **born** February 22, 1937 in Lakeland **education** University of Florida, B.S.A., 1960, J.D., 1964 **wife** Sheila Mooney of Clermont **children** DeeDee, Rick, Stephanie, Jacky, Randy and Ryan **affiliations** Lions Club; Florida and Lake County Bar Associations; Cattlemen's Association; Citrus Mutual **legislative service** House of Representatives, 1972-78, Minority Whip, 1976-78; elected to the Senate in 1980, reelected subsequently, Republican Leader Pro Tempore, 1984, Republican Leader, 1984-86 **other public service** City Attorney; City Judge; Assistant Public Defender; Lake County School Board, 1968-72,

chairman, 1970-72 **highlights** first elected Republican in Lake County; first Republican School Board Chairman in Lake County; "Most Effective in Debate", runner-up, 1983, 1984, "Most Effective in Debate", 1985 (Allen Morris Awards) **military service** U.S. Army, Korea, 1955-57 **church** Baptist **recreation** water sports, tennis, golf, snow skiing and flying **addresses** (district) P.O. Box 697, Clermont 32711 (Tallahassee) 336 Senate Office Building, 32399-1100 **telephones** (district) 904/394-6000 (Tallahassee) 904/487-5190.



Dexter Lehtinen
Republican, District 40

Attorney, Law Professor **born** March 23, 1946 in Homestead **education** University of Miami, 1968, B.A., *magna cum laude*; Columbia University, 1969, M.A., Lehman Scholar, 1974, M.B.A., International Fellow; Stanford University, 1975, J.D., Abbott Scholar for first in class; honors program graduate; Commander, Corps of Cadets; president, Florida Federation of College Young Republicans; Iron Arrow **wife** Ileana Ros of Miami **children** Katharine, Douglas and Amanda **affiliations** Military Order of Purple Heart; Disabled American Veterans; Florida and California Bar Associations; Ranger Association **legislative service** House of

Representatives 1980-86; elected to the Senate in 1986 **other public service** Federal Organized Crime Strike Force Prosecutor; Dade County Personnel Advisory Board, 1978-80; Florida Instructional Materials Council, 1978-80 **highlights** Adjunct Professor, Florida International University and University of Miami; police officer (part-time) **military service** captain, detachment commander, special forces (Green Beret), reserve, 1982-present; 1st Lt., Airborne-Ranger, Vietnam and Germany, 1969-72, retired for wounds received in action, Reconnaissance Platoon Leader **church** Lutheran **addresses** (district) P.O. Box 524113, Miami 33152 (Tallahassee) 334 Senate Office Building, 32399-1100 **telephones** (district) 305/591-1734 (Tallahassee) 904/487-5130.



Jeanne Malchon
Democrat, District 18

Communications consultant and president of communications company **born** June 17, 1923 in Newark, NJ. Moved to Florida in 1952 **education** Virginia Intermont College, A.A., 1943 **husband** Richard Malchon of Berlin, Germany **child** Richard, Jr. **affiliations** League of Women Voters, local and state president, national board; Florida Council for Clean Air, founding president, 1968-72; Pinellas County Arts Council, 1976-80; St. Petersburg Junior College Continuing Education Advisory Council, 1979-80; Pinellas Opportunity Council, 1983; United Way Board of Directors, 1980-84; Tampa Bay Study Committee, chair, 1982-84; Bureau

of Missing Children, Inc., advisory board, 1984; National Conference of Christians and Jews board of directors, Tampa Bay Chapter, 1974, chair 1980-81; American Lung Association, local and state president, national president 1984-85 **legislative service** elected to the Senate in 1982, reelected subsequently **other public service** Florida Health Planning Council, 1968-75, chair 1973-75; Governor's Commission on Criminal Justice Standards and Goals, 1971-79; Florida Judicial Council, 1972-80, appointed by Governor; Florida Council on State Housing Goals, 1974-76, chair; Cost Reduction Committee, appointed by Governor; National Association County Officials Criminal Justice Committee, 1975-80; State Association County Commissioners, director 1975-80, chair Urban Affairs Committee, 1978-80; Pinellas County Commission, 1975-80, chair 1977; Pinellas-Pasco District Mental Health Board, 1975-80; Criminal Justice Planning Council, 1975-80; Tampa Bay Area Regional Transit Authority, 1975-80; District V Advisory Council to HRS, 1975-81, vice chair 1976-81; Tampa Bay Regional Planning Council, 1975-84, secretary-treasurer, 1980; Office of Technology Assessment, Advisory Panel on Nuclear Waste Disposal and Advisory Panel on Computerized Medical Records, 1976; Pinellas County Affirmative Action Committee, 1976-80, chair 1976-78; Pinellas County Manpower Planning Council, 1976-80, chair 1977; Metropolitan Planning Organization, 1977-80, vice chair 1978-80; Clinical Trials Advisory Board, National Institute of Health, Heart, Lung and Blood Division, 1978; West Coast Regional Water Supply Authority, 1978; Florida Supreme Court Dispute Resolution Alternatives Committee, 1978-80; National Commission on Air Quality, appointed by President Carter, 1978-81; Special Committee on Cancer Research, National Institute of Health, 1979 **highlights** City of St. Petersburg, Outstanding Citizen Award, 1963; St. Petersburg Bar Association, Liberty Bell Award, 1972; Women in Communications, Athena Award, 1975; Soroptimist Club, Women Honoring Women, Woman in Government Award, 1979; Pinellas County Urban League, Outstanding Equal Opportunity Efforts, 1980; Florida Sheriffs Association, Most Effective Freshman Senator for Law Enforcement, 1983; Zonta International, Award for Contributions to Professional Women, 1984; Florida Sierra Club, Environmental Award, 1984; Florida Network of Youth and Family Services, Inc., Most Outstanding Senator Award, 1983, Most Valuable Senator Award, 1984; Tampa Bay Planning Council, Tampa Bay Management Study Commission, 1984; Tampa Bay Regional Planning Council, Outstanding Service to Local Governments of Tampa Bay Region Award, 1975-84, Growth Management Legislation Award, 1985; American Lung Association, Leadership on behalf of 1985 Clean Indoor Air Act; Pinellas County Association of Respiratory Care Managers, Distinguished Service Award, 1985; Florida Psychological Association, Legislator of the Year Award, 1985; Florida Counties, Improving Financing of Florida's State Court System, 1985; Florida Nurses Association, Outstanding Legislator of the Year Award, 1985; Mental Health Services of Upper Pinellas County, for Contribution to Mental Health, 1984-85; Florida Teaching Profession/National Education Association, Friend of Education, 1986; *Who's Who in America*; *Who's Who of American Women*; *Who's Who in the South and Southwest*; American Biographical Institute, Inc.; *The World Who's Who of Women* **church** Unitarian **addresses** (district) 2400 1/2 Pinellas Point Drive, St. Petersburg 33712 (Tallahassee) 230 Senate Office Building, 32399-1100 **telephones** (district) 813/867-1144 (Tallahassee) 904/487-5059.



Gwen Margolis
Democrat, District 37

Realtor, appraiser and developer **born** October 4, 1934 in Philadelphia, PA. Moved to Florida in 1960 **education** Temple University, 1952-54; University of Tampa and Dade Junior College, special real estate and appraisal courses **children** Edward, Ira, Karen and Robin **affiliations** director of North Miami Beach Chamber of Commerce; Business and Professional Women's Association; board of directors of Tropical Florida Girl Scouts; executive committee and former vice president of Florida Anti-Defamation League; Dade County Women's Democratic Club; Adlai Stevenson Democratic Women's Club; Democratic Club of North Dade;

League of Women Voters; past chairperson of North Dade Women's Political Caucus, 1972-73; Miami Board of Realtors; South Florida Planning and Zoning Association; National Order of Women Legislators; board of directors of Lincoln Savings and Loan Association **legislative service** House of Representatives, 1974-80, Dade Delegation chairperson, 1978-79; elected to the Senate in 1980, reelected subsequently **other public service** vice chairman of North Miami Board of Adjustment, 1972-73; vice chairman of North Miami Beach Human Relations Board, 1973; Governor Graham's Tax Study Commission, 1979 **highlights** *Who's Who of American Women*; *Who's Who of Women of the World*; *Who's Who in Commerce and Industry*; City of Hope Humanitarian of the Year, 1974 and 1979; Business and Professional Women, Outstanding Woman in Politics, 1974; Voters and Taxpayers League, Woman of the Year, 1976; FEA-United TIGER Award, 1979-82; North Miami Chamber of Commerce, Person of the Year, 1980; Women's Council of Realtors, Woman of the Year, 1980; Women in Communications, Community Headliner Award, 1980; honorary Associate of Arts degree from Miami-Dade Community College, 1981; Florida Association of Community Colleges Legislative Service Award, 1981-82; Governor's Award for the Arts Committee, Legislative Friend of the Arts, 1982; North Dade Chamber of Commerce, "Women of the Year", 1984; Florida Gold Coast Chamber of Commerce, "Women of the Year", 1985; Florida Marine Patrol, Exceptional Service Award, 1985; Florida Chamber of Commerce Economic Development Award, 1985; The Condominium Co-Op Executive Council of Florida Inc., "Women of the Year", 1985; Dade County League of Cities, Inc., Good Government Award, 1985-86; Dade County Public Schools and United Teachers of Dade, Outstanding Educational Leadership, 1986; Florida Motion Picture and Television Association, Miami/South Florida Chapter, Outstanding Service and Dedication Award, 1986 **church** Jewish **addresses** (district) 13899 Biscayne Blvd., North Miami Beach 33181 (Tallahassee) 316 Senate Office Building, 32399-1100 **telephones** (district) 305/949-4541 (Tallahassee) 904/487-5121.



Tom McPherson
Democrat, District 30

Farmer and businessman **born** March 26, 1935 in Bement, IL. Moved to Florida in 1950 **education** Stetson University, B.S., 1958; Delta Sigma Phi **wife** Sally Ann Webb of Leesburg **children** Peggy and Thomas **affiliations** past director of Broward County Mental Health Association; Broward County Farm Bureau; past president of Kiwanis, 1968; Broward County Friends of the Library; Broward County League of Women Voters; Sierra Club; Chamber of Commerce; Elks, Legislative Advisory Board **legislative service** House of Representatives, 1964-66, 1972-82; elected to the Senate in 1982, reelected subsequently **other public service**

Mayor of Cooper City, 1963-65; chairman of Florida Saltwater Fisheries Study and Advisory Council, 1980-82; vice chairman of National Conference of State Legislatures Urban Development Committee, 1980-81; member of National Conference of State Legislatures Natural Resources Committee, 1982-83; vice chairman of National Commission on Air Quality; chairman of Broward Methadone Maintenance Rehabilitation and Research Facility Advisory Board, Hollywood; chairman of Broward Treatment Program, Pompano Beach; Florida Council of State Housing Goals; South Florida State Hospital Citizens Advisory Board; Broward Community College Advisory Committee, Program on Marketing Management; advisor and sponsor of Broward County Historic Preservation Board; National Legislative Services and Security Association, member, Legislative Advisory Committee; executive board member, Girl Scouts of America; Board of Directors, Broward County Girl Scouts Council; Board of Directors, Broward County Youth Fair; Board of Directors, Marine Resources Development Foundation, 1986; Veterans of Foreign Wars, legislative advisory staff **highlights** Jaycees Good Government Award; Florida Fine Arts Council, Man of the Year Award, 1974 and 1977; Florida Association of Community Colleges Legislative Service Award, 1975; Florida Library Association Distinguished Service Award, 1978; Florida State Association of County Commissioners Distinguished Service Award, 1978; Broward County Classroom Teachers Association Community Appreciation Award, 1980; Broward County Historic Preservation Board Award for contribution to art and culture, 1980; Florida PTA Public Service Appreciation Award, 1980; Greater Hollywood YMCA Award, 1980; Broward County Public Service Award, Funding of Tree Tops Park, 1981; Fort Lauderdale Areas Board of Realtors, Legislative Appreciation Award, 1981; Greater Plantation Chamber of Commerce Public Service Award, 1981; Broward County Sierra Club, Friends of the Environment Award, 1982; Marine Industries Association of South Florida, Public Service Award, 1982; Florida Sierra Club, Legislative Award, 1982; Florida Nurserymen and Growers Association, Public Service Award, 1982; Better Business Bureau Outstanding Service Award, 1983; School Board of Broward County Award for Outstanding Assistance, 1983; Florida Marine Patrol Exceptional Service Award, 1984; Fort Lauderdale/Broward County Chamber of Commerce Award for Outstanding Participation, 1984; Florida Wildlife Federation, Conservation Legislator of the Year Award, 1985-86 **historical** Nellie McPherson, grandmother, founder of National Author's Day **military service** U.S. Army, first lieutenant, infantry, 1958-59 **church** Methodist **recreation** camping, tennis, fishing, bridge, woodworking and gourmet cooking **addresses** (district) 5273 S.W. 106th Avenue, Ft. Lauderdale 33328 (Tallahassee) 313 Senate Office Building, 32399-1100 **telephones** (district) 305/434-8787 (Tallahassee) 904/487-5097.



Carrie P. Meek
Democrat, District 36

Educational administrator and consultant **born** April 29, 1926 in Tallahassee **education** Florida A&M University, B.S., 1946; University of Michigan, M.S., 1948; University of Indiana, 1967; Florida Atlantic University, Ed.D. (pending); Educational Specialist in Leadership Training, Continuing Education and Administration of Higher Education; varsity letter, track and field; FAMU Sports Hall of Fame; Delta Sigma Theta; Phi Delta Kappa; Alpha Kappa Mu Honor Society **children** Lucia Davis Raiford, Sheila Davis Kinui and Kendrick B. **affiliations** Florida Association of Community Educators; trustee, National Parks and

Recreation Association, 1973-76; board of directors, National Association of Community Educators, 1975-78; League of Women Voters; National Organization for Women; NAACP; Top Ladies of Distinction, Miami Chapter; Miami-Dade Chamber of Commerce; Business and Professional Women's Club; Spanish American League Against Discrimination; board of directors, Miami Savings and Loan **legislative service** House of Representatives, 1979-82; elected to the Senate in 1982, reelected subsequently **other public service** board member, Dade County Schools, Bi-Racial/Tri-Ethnic Committee; board member, Health Systems-Health Planning Council, 1972-75; chairperson, City of Miami's "Parks for People" program, 1973-74; board member, Minority Business Enterprise Committee on Transportation, 1978-79; chairperson, Florida Conference of Black State Legislators, 1982-84; member of the Public Service Commission Nominating Council; board of directors, Family Health Center; member of the Governor's Housing Advisory Council **church** Baptist **addresses** (district) 149 West Plaza, Suite 236, Miami 33147 (Tallahassee) 210 Senate Office Building, 32399-1100 **telephones** (district) 305/693-0330 (Tallahassee) 904/487-5116.



William G. (Doc) Myers, M.D.
Republican, District 27
Republican Leader Pro Tempore

Physician **born** September 28, 1930 in Kittanning, PA. Moved to Florida in 1961 **education** University of Pittsburgh, B.S., 1952; School of Medicine, M.D., 1956; rotating internship, Southside Hospital, Pittsburgh, 1957; internal medicine residency, 1958; Phi Kappa Alpha; football, 1, 2, 3; Nu Sigma honorary; Pitt Players; Alpha Omega Alpha honorary; Nu Sigma Nu **wife** Carol Anne Edgar of Washington, PA **children** Jacqueline Jolane Means, William George, Jr., Bradley Stephen, Brian Jeffry, Barry Douglas and Jennifer Sue **affiliations** past member of Knights of Pythias;

Elks; Martin County Medical Society; American, Florida and Southern Medical Associations; Jupiter-Tequesta Rotary **legislative service** House of Representatives, 1978-82; elected to the Senate in 1982, reelected subsequently, Republican Floor Leader, 1984-86 **other public service** chairman of Martin County Commissioners, 1968-72 and 1976-78; chairman of HRS District IX Advisory Council, 1977-78; Health Planning Council, 1977-78; Treasure Coast Regional Planning Council, 1976-78; appointed by the Governor to the Drug and Alcohol Abuse Concerns Commission **highlights** University of Pittsburgh, James Heard Prize Medicine Award, 1952; founder, SODA (Stamp Out Drug Abuse) Martin County, 1970; Palm Beach Board of Education Appreciation Award, 1978-82; American Cancer Society Outstanding Service, 1978-80; Treasure Coast Planning Council Certificate of Appreciation, 1978; Kiwanis International Certificate of Appreciation, 1979; Martin County Schools Distinguished Service, 1981; Home Builders and

Contractors Certificate of Merit, 1981; Palm Beach Jr. College Outstanding Support Award, 1983; Florida Hospital Association "Legislator of the Year," 1983; Florida Society of Ophthalmology Legislative Award, 1983; Florida Association of General Contractors Outstanding Service Award, 1983; Florida Medical Association Tort Reform Award, 1983; Florida Association of Surgery/Medical Technicians Distinguished Service Award, 1983; United States Humane Society Certificate of Appreciation, 1984; Florida Humane Society Recognition Award, 1984; "Most Effective Freshman Senator," runner-up, 1984, "Most Effective in Debate," runner-up, 1986 (Allen Morris Awards); listed in the National Register of Prominent Americans **church** Methodist **recreation** tennis, racquetball and squash **addresses** (district) 5765 S.E. Federal Highway, Stuart 33497-8599 (Tallahassee) 304 Senate Office Building, 32399-1100 **telephones** (district) 305/283-3133 (Tallahassee) 904/487-5088.



Curtis Peterson
Democrat, District 12

Nurseryman and registered landscape architect **born** August 23, 1922 in Lakeland **education** George Washington University; Florida Southern College; Sigma Nu **wife** Ethel Schultz of Chicago, IL **children** Curtis III and Peter **affiliations** past president of Florida Nurserymen and Growers Association; director and past president of Agribusiness Institute of Florida; past president of Agricultural Tax Council; past chairman of Florida Agricultural Advisory Council; Lakeland Chamber of Commerce; Optimist; director of Polk County Association for Retarded Citizens; SHARE Council; director of Florida Sheriffs Girls Villa; Education

Commission of the States; Governor's Commission on Secondary Education **legislative service** elected to the Senate in 1972, reelected subsequently, President Pro Tempore, 1980-82, President, 1982-84 **highlights** Scouter Award, 1961; Florida Agricultural Advisory Council Distinguished Service Award, 1961-72; Florida Nurseryman of the Year, 1962; Florida Association for Retarded Children "Senator of the Year," 1974; Polk County Association for Retarded Children Outstanding Service Award, 1974; Gamma Sigma Delta Merit Award, 1976; Florida Farm Bureau Legislator of the Year, 1976; Florida Citrus Mutual Outstanding Service Award, 1977; "Most Effective in Committee," 1977 and 1980, "Most Effective Member of the Senate," 1981 (Allen Morris Awards); Florida School Boards Association "Outstanding Service Award," 1978; Florida Association of Community Colleges Legislative Service Award, 1978 and 1982; Florida Coalition for Education of Exceptional Students Award, 1978-79; Agribusiness Institute of Florida White Hat Award, 1979; Dairy Farmers, Inc. Appreciation Award, 1979; Florida Home Builders Association/Home Builders Association of Polk County Award, 1980; Associated General Contractors of America Service to Citizens Award, 1980; Florida Southern College "Citrus Club Award," 1981; Florida Chiropractic Association, Inc., D.I. Rainey Legislative Award, 1981; Florida Industrial Arts Association "Man of the Year Award," 1981; Florida Association for Media in Education Award, 1981; Florida Community Development Association Distinguished Leadership Award, 1982; Women for Responsible Legislation Appreciation Award, 1982; Lake County Area Vocational-Technical Center Appreciation Award, 1982; Florida Council on Economic Education Appreciation Award, 1982; Lakeland Lions Appreciation Award, 1982; FVATA Appreciation, 1982; City of Lakeland Outstanding Service Award, 1982; Haines City Kiwanis Distinguished Service Award, 1982; Lakeland and Winter Haven Board of Realtors Award, 1982; Imperial Polk County Farm Bureau Award, 1982; Florida Nurserymen and Growers Association "Dick Pope" Award, 1982; Florida Farm Bureau Honorary Director Award, 1982-83; Florida Counties Award, 1983; Southside Baptist Church Citizenship Award, 1983; Property Appraisers' Association of Florida Legislative Award,

1983; Florida Vocational Association Legislative Leadership Award, 1983; Florida Chiropractic Association Distinguished Service Award, 1983; Florida School Boards Association Outstanding Leadership Award, 1983; Curtis Peterson Auditorium/Lecanto High School and Community College Facility named by Citrus County, 1983; United States Sugar Corporation Award, 1983-84; Florida Citrus Mutual Appreciation Resolution, 1984; City of Lakeland Resolution designating a public park as Curtis Peterson Park, 1984; Honorary Doctor of Laws Degree, conferred by Florida Southern College in Lakeland, February 14, 1984; Curtis Peterson State Regional Service Center, Lakeland, named by the Florida Legislature, dedicated 1986 **historical** J. Hardin Peterson, uncle, was U.S. Congressman from Florida for 18 years; E.J. Etheredge, cousin, from DeSoto County, was elected to the Florida House in 1921, and to Florida Senate District 27 in 1923, 1925 and 1927; David Godfrey Harmon Geiger, great-grandfather, from Lafayette County, was elected to the Florida House in 1907; David Clayton Geiger, great-uncle, from Lafayette County, was elected to the Florida House in 1923 and 1933 **military service** U.S. Coast Guard, World War II convoy duty in Atlantic and Caribbean **church** Baptist **recreation** travel, hiking, fishing and reading **addresses** (district) P.O. Box 180, Eaton Park 33840 (Tallahassee) 252 Senate Office Building, 32399-1100 **telephones** (district) 813/665-5545 (Tallahassee) 904/487-5040.



Lawrence H. (Larry) Plummer
Democrat, District 39

Funeral director **born** October 27, 1940 in Miami **education** University of Miami, B.B.A., 1963; president of Sigma Alpha Epsilon **affiliations** director of Dade County Young Democrats, 1968; president of South Miami-Kendall Area Chamber of Commerce, 1970; president of South Miami-Kendall Jaycees, 1976; chairman of Chamber of Commerce Legislative Affairs Committee, 1978; Barry College President's Advisory Council; director of South Miami Hospital Associates, 1978; University of Miami Alumni Association and Athletic Federation; Southwest Miami-Kendall Rotary Club **legislative service** House of Representatives, 1978-82; elected to the Senate in 1982, reelected subsequently, Majority Floor Leader, 1984-86 **highlights** Voters and Taxpayers League Outstanding Young Man in Dade County, 1978; Coral Gables Jaycees Good Government Award, 1979-80; Dade County League of Cities Good Government Award, 1984; Florida Association Board of Realtors, Outstanding Senator Award, 1986 **historical** Dr. J.W.V.R. Plummer, great-grandfather, member of House of Representatives, 1881 and Key West Mayor, 1884; Joseph L. Plummer, father, Dade County School Board, 1948; Joseph L. Plummer, Jr., brother, Commissioner City of Miami, 1984 **military service** U.S. Marine Corps, 1964-70, unit citation, outstanding rifleman **church** Catholic **recreation** bicycling **addresses** (district) 6001 S.W. 40th Street, South Miami 33155 (Tallahassee) 204 Senate Office Building, 32399-1100 **telephones** (district) 305/665-3939 (Tallahassee) 904/487-5127.

Ileana Ros-Lehtinen
Republican, District 34

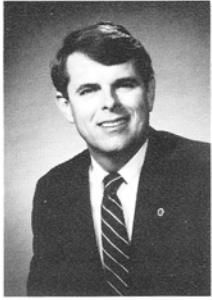


Educational Administrator, FIU Clinical Instructor **born** July 15, 1952 in Havana, Cuba. Moved to Florida in 1960 **education** Miami Dade Community College, A.A., 1972; Florida International University, B.A., 1975; graduated with honors from Miami Dade Community College and Florida International University; worked on college newspaper **husband** Dexter Lehtinen of Miami **children** Amanda Michelle; stepchildren, Katharine and Douglas **affiliations** Bilingual Private School Association, Honorary President; Council of Bilingual Schools, Vice President; Board of Friends of Education at Florida International University **legislative service** House of Representatives, 1982-86; elected to the Senate in 1986 **other public service** Florida certified teacher; member, Governor's Commission on Child Support Enforcement; member, Governor's Advisory Council on Minority Enterprise Development **highlights** First Hispanic woman elected to Florida House of Representatives and Florida Senate **religion** Catholic **recreation** reading **addresses** (district) 8421 N.W. 56th Street, Miami 33166 (Tallahassee) 330 Senate Office Building, Tallahassee 32399-1100 **telephones** (district) 305/592-1288 (Tallahassee) 904/487-5109.

James A. Scott
Republican, District 31



Attorney **born** January 14, 1942 in Pikeville, KY. Moved to Florida in 1965 **education** University of Kentucky, B.A., 1963, J.D., 1965; Sigma Nu; Phi Alpha Delta; debate and discussion team **wife** Janice Ann Suskey of Miami **children** Frank and Stacy Ann **affiliations** Florida, Kentucky and American Bar Associations; chairman of legislation committee of Broward Bar Association; Fort Lauderdale Chamber of Commerce; Broward Minutemen Bicentennial Committee; American Arbitration Association; Board of Governors, Nova University of Coral Springs; University of Kentucky Law Alumni Association; Ducks Unlimited; Hundred Club of Broward **legislative service** elected to the Senate in 1976, reelected subsequently, Minority Floor Leader, 1978-80, Minority Leader, 1980-82, chairman of Broward Legislative Delegation, 1981-82 **other public service** Associate Municipal Judge in Deerfield Beach, 1972; Broward legislative delegation attorney, 1972-74; Prosecutor in Deerfield Beach, 1973-76; director and treasurer of Legal Aid Service of Broward, 1974-76 **highlights** Florida Realtors for Private Property Rights "Legislator of the Year," 1978; "Most Effective First Term Member," 1978, "Most Effective in Debate," runner-up, 1980-82 (Allen Morris Awards) **military service** U.S. Coast Guard, 1965-68 **church** Presbyterian **recreation** golf, hunting and riding **addresses** (district) 2000 East Oakland Park Boulevard, Fort Lauderdale 33306 (Tallahassee) 346 Senate Office Building, 32399-1100 **telephones** (district) 305/566-8600 (Tallahassee) 904/487-5100.



George Stuart, Jr.
Democrat, District 14

Investment Banker, Drexel Burnham Lambert **born** January 13, 1946 in Orlando **education** University of Florida, B.A., 1968; Harvard University Graduate School of Business, M.B.A., 1970; Sigma Chi **wife** Elisabeth Hixon of Pensacola **children** Ann Elisabeth, Kathryn Knowles and Caroline Vickers **affiliations** Kiwanis Club of Orlando; Boys Club of Central Florida; Boy Scouts of America Central Florida Council Advisory Board; Orlando Regional Medical Center Foundation Board; University of Central Florida Foundation Board of Directors; Zora Neale Hurston Fellowship Award Committee; Tangerine Sports Association Board, chairman, 1979-80; Southeastern Regional Office Machine Dealers Association (SEROMDA), president, 1979-80; National Office Products Association; Greater Orlando Sports Organizing Committee, president **legislative service** elected to the Senate in 1978, reelected subsequently **other public service** Orlando City Council, 1972-78; Florida State Resource Recovery Council, vice chairman, 1974-79; Greater Orlando Aviation Authority, 1976-77; Southern Growth Policies Board; Council of State Governments, Executive Committee; Southern Legislative Conference **military service** U.S. Army Reserve, 1968-76 **church** Baptist **recreation** horses and golf **addresses** (district) P.O. Box 1188, Orlando 32802 (Tallahassee) 246 Senate Office Building, 32399-1100 **telephones** (district) 305/423-6710 (Tallahassee) 904/487-5047.



Pat Thomas
Democrat, District 2

Owner of general insurance agency, mortgage broker **born** November 21, 1933 in Quincy **education** University of Florida, B.S.A., 1957; Florida Blue Key; president of Alpha Gamma Rho; president of Senior Class **wife** Mary Ann Jolley of Naples **children** Anne Jolley Proctor and John Pat **affiliations** Mason; Rotary Club; Shrine; Chamber of Commerce; National and Gadsden County Associations of Insurance Agents; American Legion; Elks; Florida Farm Bureau **legislative service** House of Representatives, 1972-74; elected to the Senate in 1974, reelected subsequently **other public service** state chairman of Democratic Executive Committee of Florida, 1966-70 **highlights** "One of Florida's Five Outstanding Young Men," 1967; National Junior Chamber of Commerce nominee as "Outstanding Young Man of America," 1967; "Most Outstanding First Term Member," 1976, "Most Effective in Debate," 1981, 1986, "Most Effective in Committee," runner-up, 1983, 1985 (Allen Morris Awards); Legion of Honor recipient; Order of DeMolay; Florida Realtors Award for protection of private property rights, 1977; Florida Association of Community Colleges Service Award, 1978; Florida Fruit and Vegetable Growers Legislative Award, 1986; Florida Sheriffs Legislative Award, 1986 **military service** U.S. Army, Korea **church** Presbyterian **recreation** hunting, boating and fishing **address** 220 Senate Office Building, Tallahassee 32399-1100 **telephone** 904/487-5004.



Karen Thurman
Democrat, District 4

Teacher **born** January 12, 1951 in Rapid City, SD. Moved to Florida in 1966 **education** University of Florida, B.A., 1973 **husband** John Thurman of Orlando **children** McLin and Liberty Lee **affiliations** charter member of Dunnellon Chamber of Commerce; charter member of Florida Horseman's Children's Society; Pilot Club, honorary member; Altrusa Club of Ocala, member **legislative service** elected to the Senate in 1982, reelected subsequently **other public service** president mayor of Dunnellon City Council; Regional Energy Action Committee, Withlacoochee Regional Water Supply Authority; Marion County Transportation Board **highlights** Dunnellon Chamber of Commerce "Service Above Self Award," 1980; Withlacoochee Regional Planning Council Appreciation for Service, Regional Energy Action Committee; Altrusa Club of Ocala "Outstanding Woman of the Year", 1982-83; Dunnellon Area Chamber of Commerce Special Ambassadors Award, 1983 **church** Episcopal **recreation** bowling and water sports **addresses** (district) P.O. Box 5058, Inverness, 32650 (Tallahassee) 228 Senate Office Building, 32399-1100 **telephones** (district) 904/726-8500, ext. 595 (Tallahassee) 904/487-5014.



Peter M. Weinstein
Democrat, District 29

Attorney **born** February 3, 1947 in New York, NY. Moved to Florida in 1977 **education** New York University, B.S., 1967; Brooklyn Law School, J.D., 1970; Junior and Senior Honorary Societies **wife** Barbara Forman of New York, NY **children** Andrew and Michael **affiliations** Democratic Executive Committee of Broward County; Coral Springs Democratic Club, President, 1980-82; B'nai B'rith; Jewish War Veterans; Board Member, Peter Pan Non-profit Child Care Center **legislative service** elected to the Senate in 1982, reelected subsequently, Broward County Legislative Delegation, vice chairman, 1984-85, chairman, 1985-86 **other public service** Coral Springs Planning and Zoning Board; Broward County Charter Review Commission; appointed to Sentencing Guidelines Commission, 1985, reappointed subsequently **highlights** Assistant District Attorney, Queens County, NY, Narcotics Prosecutor, Chief of Supreme Court Trial Bureau; Florida Sheriffs Association "Most Effective Freshman for Law Enforcement," 1983; FTP/NEA, Freshman Friend of Education, 1983; "Most Effective First Term Member," 1983-84 (Allen Morris Award); Gwen Cherry Women's Political Caucus Appreciation Award, 1984; Broward County AFL-CIO Community Service Award, 1985; Sheriff's Appreciation Award, 1985; Early Childhood Development Association, Legislative Child Advocate of the Year, 1986; Florida Association of Alternative School Educators, Certificate of Appreciation for Prevention of School Dropout, 1986; Appointed National Guest Lecturer in Political Process and Social Issues at Nova University, Doctoral program in Early and Middle Childhood **historical** Moses Weinstein, father, New York Supreme Court Justice and former Speaker of New York State Assembly; Jeremy Weinstein, brother, New York State Senator **military service** U.S. Army, captain, awarded Army Commendation Medal for meritorious duty **church** Jewish **recreation** reading and photography **addresses** (district) 7880 N. University Drive, Suite 301, Tamarac 33321 (Tallahassee) 234 Senate Office Building, 32399-1100 **telephones** (district) 305/726-1400 (Tallahassee) 904/487-5094.



Eleanor Frank Weinstock
Democrat, District 26

Artist **born** January 25, 1929 in New York, NY. Moved to Florida in 1953 **education** Skidmore College, B.S., 1950 **husband** Sander of New York, NY **children** Charles, Jane and Ann **affiliations** State League of Women Voters, past president, 1973-75; Palm Glades Girl Scout Council, director and vice president, 1982; Mothers March of Dimes, chairman, 1985-87 **legislative service** House of Representatives, 1978-86; elected to the Senate in 1986 **other public service** Florida Fuel Allocation and Conservation Council, 1973-74; Florida Commission on the Status of Women, 1974-77; Fifteenth Judicial Circuit Nominating Commission, 1975-78; Migrant Education Task Force, 1979-80, 1983-84; Governor's Housing Goals Council, 1980-82; Health and Rehabilitative Services Advisory Council, Children, Youth and Families, 1981-83, 1985; West Palm Beach YWCA Advisory Panel for Domestic Assault Shelter, 1982; Joint Executive and Legislative Task Force for Teacher Education Quality Improvement, 1982-84; Florida Education Finance Program Task Force (FEFP), 1982-84; Math, Science and Computer Education Task Force, 1982-84; member, Florida Education Council, 1983-84; ex-officio member, Florida Quality Instruction Incentives Council, 1983-84; ex-officio member, Speaker's Task Force on Middle Childhood, 1983-84; appointed by Governor Graham to Southern Regional Education Board's (SREB) Legislative Advisory Council, 1983; member, Education Committee of the Tri-County Regional Delegation, Dade, Broward and Palm Beach counties, 1985 **highlights** County Sunshine Amendment Campaign and Corporate Profits Tax Campaign, chairman; member, Education and Job Training Committee of the State-Federal Assembly of the National Conference of State Legislatures, 1983-84; member, Education Commission of the States, 1983-85; member-alternate, Education and Labor Committee of the State-Federal Assembly of the National Conference of State Legislatures, 1985 **church** Jewish **recreation** tennis and bridge **addresses** (district) 319 Clematis Street, Suite 617, West Palm Beach 33401 (Tallahassee) 328 Senate Office Building, 32399-1100 **telephones** (district) 305/832-5122 (Tallahassee) 904/487-5356.



Marlene Woodson
Republican, District 24

Consultant **born** March 8, 1937 in Ford City, PA. Moved to Florida in 1963 **education** Indiana University of Pennsylvania, B.S., 1958; University of South Florida, M.A., 1968; Nova University, Ed.D., 1981 **children** George, Bert, Robert, Daniel and David **affiliations** HOPE of Manatee County Board of Directors, member, 1981-84, treasurer, 1981; Manatee County Council for the Arts, vice chairman, 1983-85; Manatee Chamber of Commerce, ambassador, committee chair, 1983-85; Girls Club of Manatee County Board of Directors, member, 1984-85; Existing Industry Committee, Manatee Economic Council, chairman, 1984-85; Sarasota Committee of 100 Board of Directors, member, 1984-86; Sarasota Chamber of Commerce Community Needs Assessment, chairman, 1985; Manatee County Council for Resource Development, chairman, 1985; Florida Council for Resource Development, president-elect, 1985; NCCJ Board of Directors, member, 1985-86; West Coast Symphony Guild, member, 1981-present; Child Development Center Board of Directors, member, 1983-present; Ringling Museum Council Board of Directors, member, 1985-present; Sarasota Opera Association Board of Directors, member, 1985-present; Bradenton Plaza Club Board of Governors, member, 1985-present; Salvation Army Board of Directors, member, 1985-present; Manatee Symphony Association,

president, 1986-87 **legislative service** elected to the Senate in 1986 **other public service** teacher: 12 years college level and eight years at secondary level, 1958-82; Manatee Community College, Director of Institutional Advancement, 1982-86; Manatee Community College Foundation, Inc., chief executive officer, 1982-86; Title III Federal Grant, project director, 1983-86 **highlights** named as one of the top twenty-five leading female executives in southwest Florida by *Florida Business Journal* and AT&T, 1985 **religion** Protestant **recreation** needlework, reading, tennis and golf **addresses** (district) P.O. Drawer 9065, Bradenton 33506 or 4815 Manatee Avenue, West, Bradenton 33529 (Tallahassee) 216 Senate Office Building, 32399-1100 **telephones** (district) 813/795-1777 (Tallahassee) 904/487-5078.

Presidents of the Senate

Session	President	Session	President
1839-40	John Warren	1919	James E. Calkins
1841	William P. Duval	1921	William A. MacWilliams
1842	William H. Brockenbrough	1923	Theo. T. Turnbull
1843-44	George Walker	1925	John S. Taylor
1845	James A. Berthelot	1927	Samuel W. Anderson
1846	Dennitt H. Mays	1929	Jesse J. Parrish
1847	Daniel G. McLean	1931	Patrick C. Whitaker
1848	Erasmus D. Tracy	1933	Truman G. Futch
1850-52	Robert J. Floyd	1935	William C. Hodges
1854-55	Hamlin V. Snell	1937	D. Stuart Gillis
1856	Philip Dell	1939	J. Turner Butler
1858-59	John Finlayson	1941	John R. Beacham
1860-61	Thomas Jefferson Eppes	1943	Philip D. Beall
1862-63	Enoch J. Vann	1945	Walter W. Rose
1864	Abraham K. Allison	1947-48	S. Dilworth Clarke
		1949	Newman C. Brackin
		1951	Wallace E. Sturgis
		1953	Charley E. Johns
		1955-56	W. Turner Davis
		1957	William A. Shands
		1959	Dewey M. Johnson
		1961	W. Randolph Hodges
		1962-63	F. Wilson Carraway
		1965	James E. Connor
		1967	Verle A. Pope
		1969-70	John E. Mathews, Jr.
		1971-72	Jerry Thomas
		1973-74	Mallory E. Horne
		1974*	Louis de la Parte
		1975-76	Dempsey J. Barron
		1977-78	Lew Brantley
		1979-80	Philip D. Lewis
		1981-82	W. D. Childers
		1983-84	Curtis Peterson
		1985-86	Harry A. Johnston, II.
		1987-88	John W. Vogt

*Served as Acting President from July 1, 1974 when President Horne resigned until November 6, 1974.

From 1865 through 1887 the Lt. Governor served as President.

Elected non-member officers

At its organization session every two years, the Senate elects a Secretary of the Senate and a Sergeant at Arms. These two officers are not members of the Senate, but they work closely with the senators and staff.

The Secretary of the Senate keeps all Senate records and authenticates each act and joint resolution passed by the Senate. The Secretary also publishes the journal and the calendar. He supervises Legal Research and Drafting, which drafts proposed legislation.

The Sergeant at Arms maintains order in the chamber, in the gallery and in committee rooms. He is in charge of property acquisition and is responsible for the maintenance of all Senate property.



Joe Brown
Secretary of the Senate

born July 15, 1932 in Columbus, GA. Moved to Florida in 1932 **education** University of Florida, B.S.J., 1958; graduate studies in public opinion research at University of Florida and public administration at Florida State and Florida A&M; student publications; student government; Sigma Delta Chi; Alpha Gamma Rho **wife** Rebecca Anne Etheridge of Waycross, GA **children** Joe, Charles, Julie, Ivy and Andi **affiliations** past staff vice president and staff chair of National Conference of State Legislatures; past president of American Society of Legislative Clerks and Secretaries; advisor and/or counselor, Boys State, Girls State, YMCA Youth Legislature and Silver Haired Legislature; past officer in American Legion, Elks, Sigma Delta Chi, Jaycees, Kiwanis, Boy Scouts, University of Florida Alumni Association; Florida Blue Key honorary **other public service** University of Florida faculty, 1960-61; executive assistant to the Commissioner of Agriculture, 1961-67; State Tourist Director, 1967; Deputy Beverage Director, 1967-68; Hotel and Restaurant Commissioner, 1969 **highlights** staff director of Senate Governmental Operations Committee, 1971-72; director of management and staff of the Senate, 1973-74; elected Secretary of the Senate, April 2, 1974, reelected subsequently **military service** U.S. Air Force, Korea; U.S. Coast Guard Reserve **church** Methodist **recreation** hunting, fishing, camping and cooking **address** The Capitol, Suite 404, Tallahassee 32399-1100 **telephone** 904/487-5270.



Wayne W. Todd, Jr.
Sergeant at Arms

born July 19, 1944 in Tallahassee **education** Florida State University, B.S., 1968; Florida State University College of Law, 1968-71 **wife** Ann Sadler of St. Petersburg **children** Kathryn Jennifer and Julie Hunt **affiliations** Elks; National Conference of State Legislatures, Executive Board, 1977-present; Assembly on the Legislature, Legislative Organization and Management Committee, member; National Legislative Services and Security Association, president, 1985-present **highlights** Florida Jaycees "Distinguished Service Award"; United States Jaycees Outstanding Young Men in America, 1974; Jaycees Governmental Affairs

Committee, state chairman; United States Marshal's Training Academy, Washington, D.C., "Specialized Security" certificate, 1972; acting Sergeant at Arms, July, 1982; elected Sergeant at Arms of the Senate, November 16, 1982, reelected subsequently **military service** Florida National Guard, 1962-66 **church** Methodist **recreation** hunting and fishing **address** The Capitol, Suite 403, Tallahassee 32399-1100 **telephone** 904/487-5224.

The Senate Chamber

Frequently before a session of the Senate convenes, senators can be seen scurrying "to the floor" or "to the chamber." They're headed for the modern room on the fourth floor of the Capitol where they debate the merits of proposed legislation. This is the fourth chamber used since the first session of the Senate was called to order in 1839. In 1978, the senators held their first session in this chamber.

On the floor above the chamber, and appearing to drop down into the chamber, is the gallery, where citizens may be seated and observe the Senate in session. From the gallery one's attention is drawn to the rostrum where the President is presiding.

The President occupies the "chair," pacing the flow of legislation, deciding who will speak, and ruling on parliamentary disputes. The President frequently calls on other members to preside while he works out the details of legislative proposals. If the President wishes to debate an issue before the Senate, he will vacate the chair and speak from his regular desk on the floor.

The portraits hanging below the gallery commemorate past Presidents of the Senate.

Just above the President, recessed into the ebony walls, is the screen for the video projection system which displays the text of proposed amendments as they are offered in debate. The display system is also used to welcome groups of visitors watching from the gallery. In the booth on the left side of the screen, computer operators record the Senate's actions into the legislative information network. The booth on the right houses the sound system operators.

In front of the President's rostrum is the Senate "desk," which is staffed by the Secretary of the Senate. Legislative business is not properly before the Senate until it is "on the desk." Clerks at this desk record Senate actions for publication in the journal, the official record of Senate proceedings. The video system and the voting boards are also operated from this desk. A senator who wishes to "approach the well" to make a speech on a particularly important matter speaks from one of the reading podiums at the secretary's desk.

Voting boards on each side of the chamber record a member's green "yea" or red "nay" votes. (The yellow lights you see by some names aren't caution lights or indications that a senator can't decide how to vote. They're signals that the senator wants a "page" to deliver a message or retrieve a file from his office, and you can be sure that one of the blue-blazered messengers will be at the senator's desk shortly.) The voting boards also display the number of the bill or amendment being debated and other information related to the proceedings. Electronic voting was first used in the Senate in 1966, and now nearly all votes are recorded electronically.

The seating arrangement in the chamber is determined by district number. Senators from odd-numbered districts sit on the President's left, and those

representing even-numbered districts sit on the right. There are exceptions to this tradition. The chairman of the Committee on Rules and Calendar sits in the first seat to the President's left in the front row. He's the one you'll see on his feet directing the flow of legislative traffic and advising the President on the rules. The President Pro Tempore is seated to the President's right in the front row. With these exceptions, the seats are arranged numerically. The front row numbers are single digit, the second row all teens, the third row in the twenties and the back row holds the thirties and number 40.

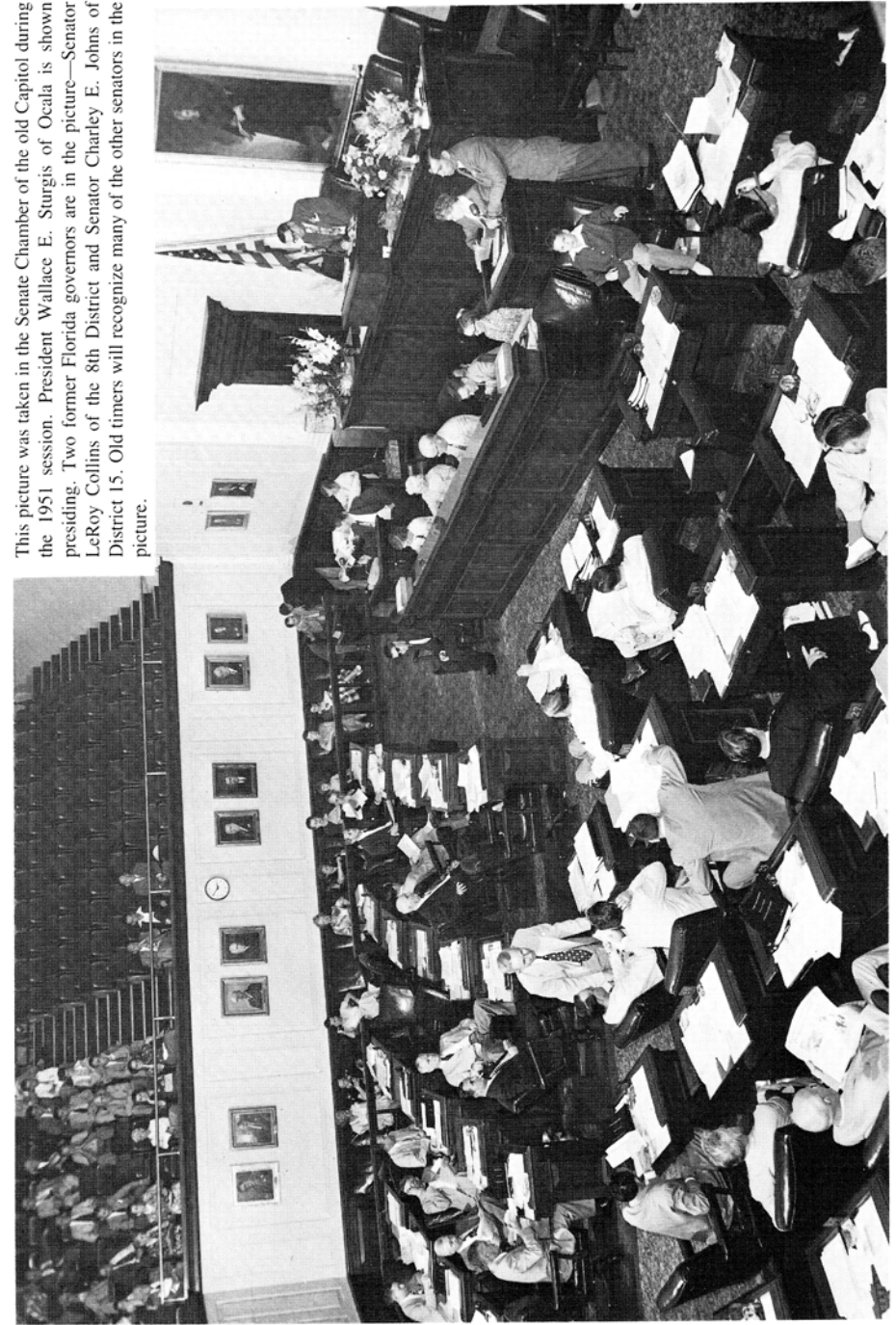
At one time, the chamber desk was a member's only desk. Their secretaries sat beside them in the chamber, frequently even during sessions. Often a senator would interrupt a letter he was dictating to rise and speak on a bill, then return to his correspondence after he had his say. Now adequate office space is provided for the senators and their staff; telephones at each chamber desk provide direct communication with the staff. Today, only members of the Senate and designated staff members are allowed in the chamber while the Senate is in session. Certain present and past state officials and guests invited by the President may also enter the chamber during a session. All men in the chamber must wear coats and ties.

Senators are addressed by their district number when they are recognized to speak. Custom decrees that a senator may not be addressed as a gentleman or lady, as are members of the House of Representatives. He or she is "the senator from the thirty-fifth," for example, but never "the gentleman or lady from the thirty-fifth." During debate, the members are always formally addressed as "senator," not by their given names.

In the room at the right rear of the chamber, staff attorneys draft "floor amendments" to bills being debated. The caucus room at the left rear is frequently used for quick conferences of senators, often with their colleagues from the House of Representatives. Just over the main entrance is the press gallery, where members of Florida's press corps record history. The remainder of the gallery is open to the public at all sessions, except that a portion of the gallery is usually reserved for senators' families and other sections are often reserved for visiting students.

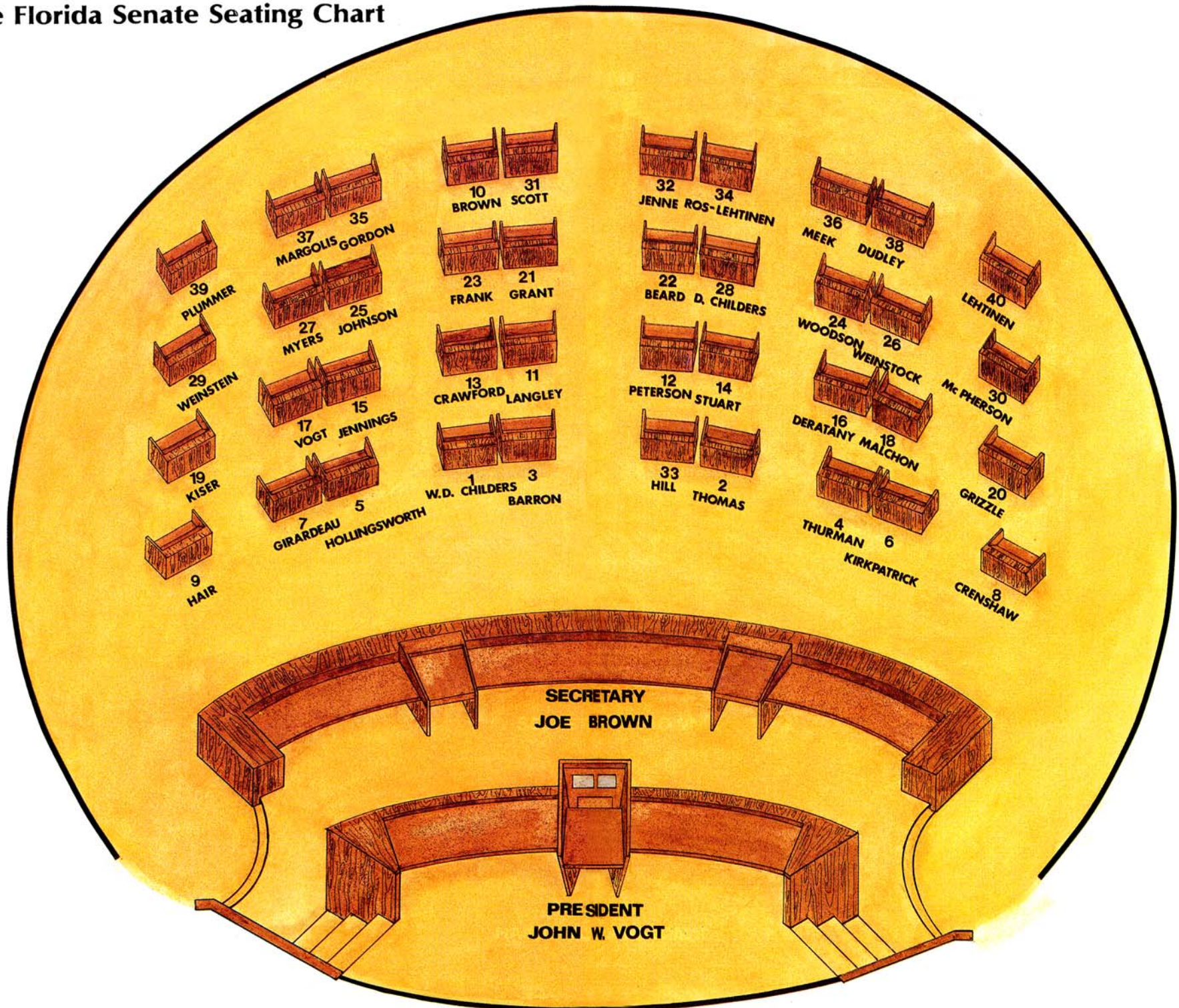
Television cameras from Florida Public Broadcasting are positioned at the front and rear of the gallery to televise all Senate sessions. Each weekday evening during the session, public television stations broadcast "Today in the Legislature," a one-hour program summarizing legislative action during the day. The broadcasts are funded by the Legislature, but all editorial content is determined by the group of professional journalists who produce the programs. Florida's legislative telecasts were used as a model for a similar system installed in 1979 in the U.S. House of Representatives.

This picture was taken in the Senate Chamber of the old Capitol during the 1951 session. President Wallace E. Sturgis of Ocala is shown presiding. Two former Florida governors are in the picture—Senator LeRoy Collins of the 8th District and Senator Charley E. Johns of District 15. Old timers will recognize many of the other senators in the picture.



The Way It Used To Be

The Florida Senate Seating Chart



**President
of the Senate**

**Committee on
RULES & CALENDAR**

Senator Barron, *chairman*
Senator Langley, *vice chm.*
Senator Jennings *Rep. Leader*
Senators D. Childers,
Crawford, Deratany, Hair, Hill,
Jenne, Johnson, Myers,
Ros-Lehtinen and Thomas

**President
Pro Tempore**

Republican Office

Sergeant at Arms

**Majority
Floor Leader**

**Secretary of the
Senate**

**Committee on
AGRICULTURE**

Senator Hollingsworth,
chairman
Senator Peterson, *vice chm.*
Senators Beard, Crawford,
Dudley, Kirkpatrick, Stuart,
Thomas, Thurman and
Weinstock

**Committee on
APPROPRIATIONS**

Senator Scott, *chairman*
Senator D. Childers, *vice chm.*
Senators Beard, Brown, W. D.
Childers, Grant, Grizzle, Hair,
Hollingsworth, Jennings,
Kirkpatrick, Langley, Lehtinen,
Margolis, Myers, Peterson and
Thomas

Subcommittee A

Senator W. D. Childers,
chairman
Senators Beard, Hollingsworth,
Jennings and Langley

Subcommittee B

Senator Peterson, *chairman*
Senators Grizzle, Hair,
Kirkpatrick and Lehtinen

Subcommittee C

Senator Thomas, *chairman*
Senators Brown, Grant,
Margolis and Myers

**Committee on
COMMERCE**

Senator Jennings, *chairman*
Senator Barron, *vice chm.*
Senators W. D. Childers,
Crenshaw, Deratany, Gordon,
Hair, Langley, Scott and
Thomas

**Committee on
CORRECTIONS,
PROBATION AND
PAROLE**

Senator Hill, *chairman*
Senator Woodson, *vice chm.*
Senators Hollingsworth,
Malchon, McPherson, Peterson
and Stuart

**Committee on
ECONOMIC,
COMMUNITY AND
CONSUMER AFFAIRS**

Senator Margolis, *chairman*
Senator Kirkpatrick, *vice chm.*
Senators Frank, Girardeau,
Meek, Ros-Lehtinen and
Thurman

**Committee on
EDUCATION**

Senator D. Childers, *chairman*
Senator Peterson, *vice chm.*
Senators Gordon, Johnson,
Meek, Myers, Ros-Lehtinen,
Thurman and Woodson

**Committee on
EXECUTIVE BUSINESS**

Senator Grizzle, *chairman*
Senator Dudley, *vice chm.*
Senators Kiser, Myers,
Plummer and Weinstock

**Committee on
FINANCE, TAXATION
AND CLAIMS**

Senator Deratany, *chairman*
Senator Crawford, *vice chm.*
Senators Crenshaw, Dudley,
Johnson, Kiser, Malchon,
Plummer, Stuart, Weinstein
and Woodson

**Committee on
GOVERNMENTAL
OPERATIONS**

Senator Kiser, *chairman*
Senator Jenne, *vice chm.*
Senators Brown, Johnson,
Margolis, McPherson and Scott

**Committee on
HEALTH AND
REHABILITATIVE
SERVICES**

Senator Myers, *chairman*
Senator Ros-Lehtinen, *vice chm.*
Senators D. Childers, Gordon,
Grant, Plummer and Woodson

**Committee on
JUDICIARY-CIVIL**

Senator Langley, *chairman*
Senator Grant, *vice chm.*
Senators Crenshaw, Dudley,
Frank, Jenne and Weinstein

**Committee on
JUDICIARY-CRIMINAL**

Senator Johnson, *chairman*
Senator Weinstein, *vice chm.*
Senators Beard, Brown, Grant,
Jenne and Lehtinen

**NATURAL RESOURCES
AND CONSERVATION**

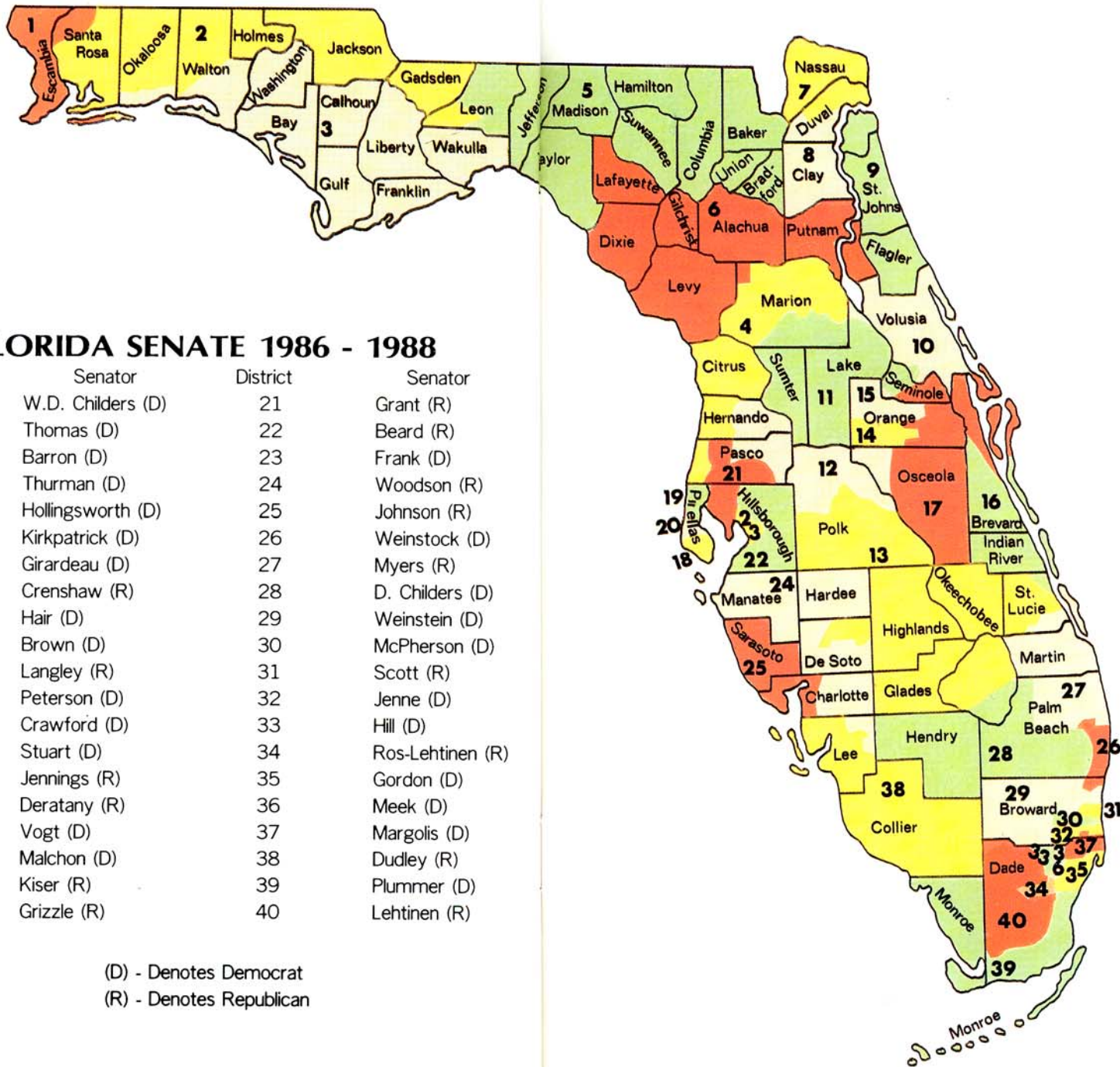
Senator Crawford, *chairman*
Senator Grizzle, *vice chm.*
Senators Brown, W. D.
Childers, Kirkpatrick, Lehtinen,
McPherson, Thomas and
Weinstock

**Committee on
PERSONNEL,
RETIREMENT AND
COLLECTIVE
BARGAINING**

Senator Hair, *chairman*
Senator Lehtinen, *vice chm.*
Senators Crenshaw, Frank, Hill
Malchon and Meek

**Committee on
TRANSPORTATION**

Senator Beard, *chairman*
Senator Stuart, *vice chm.*
Senators Deratany, Girardeau,
Hill, Jennings and Kiser



THE FLORIDA SENATE 1986 - 1988

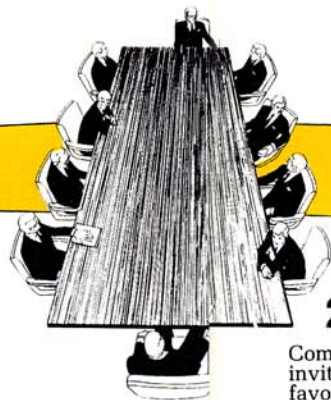
District	Senator	District	Senator
1	W.D. Childers (D)	21	Grant (R)
2	Thomas (D)	22	Beard (R)
3	Barron (D)	23	Frank (D)
4	Thurman (D)	24	Woodson (R)
5	Hollingsworth (D)	25	Johnson (R)
6	Kirkpatrick (D)	26	Weinstock (D)
7	Girardeau (D)	27	Myers (R)
8	Crenshaw (R)	28	D. Childers (D)
9	Hair (D)	29	Weinstein (D)
10	Brown (D)	30	McPherson (D)
11	Langley (R)	31	Scott (R)
12	Peterson (D)	32	Jenne (D)
13	Crawford (D)	33	Hill (D)
14	Stuart (D)	34	Ros-Lehtinen (R)
15	Jennings (R)	35	Gordon (D)
16	Deratany (R)	36	Meek (D)
17	Vogt (D)	37	Margolis (D)
18	Malchon (D)	38	Dudley (R)
19	Kiser (R)	39	Plummer (D)
20	Grizzle (R)	40	Lehtinen (R)

(D) - Denotes Democrat
 (R) - Denotes Republican

How a Senate Bill Becomes a Law

1.

Need for legislation conceived; bill is prepared, numbered, introduced and referred to one or more committees.



2.

Committee hearings held. Public is invited to testify. Bill reported favorably or unfavorably.

3.

Bill debated by full Senate, amendments considered. If the bill passes, then . . .



5.

Committee hearings held. Public is invited to testify. Bill reported favorably or unfavorably.



4.

Bill goes to the House of Representatives where it is referred to one or more committees.



6.

Bill debated by full House, amendments considered. If the bill passes, then . . .



6A.

Conference committee. If the two houses cannot agree on a final bill, a conference committee works out a compromise and both houses then vote on the compromise.



7.

To Governor for his approval or veto. If vetoed, 2/3 vote in each house overrides veto.



How a bill becomes a law

Bills may be introduced by one or more Senators or Representatives in their respective houses. When a Senate bill has been prepared, it is delivered to the Secretary of the Senate for introduction and is given a number. After receiving a number, the bill is read the first time by publication in the Journal. It is referred to the appropriate committees, and the original copy is delivered to the chairman of the committee of first reference. Then process continues as illustrated above.

Three Branches of Government

Florida's Constitution, in the traditional American pattern of "separation of powers," divides the governmental structure of the state into three separate and independent branches.

The Legislative Branch has exclusive law-making power and determines the general policies by which the problems of society are to be met. It may delegate limited rule-making power to some executive agencies.

The Executive Branch, with the Governor as its chief, administers the laws made by the Legislature. The Cabinet—composed of the Secretary of State, Attorney General, Comptroller, Treasurer, Commissioner of Agriculture and Commissioner of Education—shares some executive power and responsibilities with the Governor.

The Judicial Branch interprets the law and applies the Constitution. The judiciary also presides over trials, although certain limited administrative disputes may be decided by executive agencies when authorized by law.

This structural division, faithfully maintained, sets up a system of "checks and balances" to ensure that all three branches properly perform their constitutional duties in the administration of state affairs.

The Legislative Branch

Composition and organization Florida's Legislature is composed of two houses, the Senate and the House of Representatives. Each house is the sole judge of the qualifications and elections of its members and has the power to choose its own officers and establish its own rules of procedure. All legislative sessions are open to the public, except sessions of the Senate when appointments or suspensions of public officials are considered. These sessions may be, but seldom are, closed. Either house of the Legislature may initiate legislation on any subject.

The State Constitution, adopted in 1968, provides that the Legislature shall be apportioned into not less than 30, nor more than 40, senatorial districts; and not less than 80, nor more than 120, representative districts. The Legislature met that mandate during the 1972 session when it established 40 Senate districts and 120 House districts. Senators serve four-year terms and representatives serve two-year terms.

Officers The President of the Senate and the Speaker of the House preside over their respective houses. The President Pro Tempore and the Speaker Pro Tempore preside in the absence of the President or the Speaker. The presiding officers are elected by their respective bodies and serve for two-year terms. Each house also elects other constitutional officers, the Secretary of the Senate and the Clerk of the House, from outside its membership. Among their responsibilities is the duty to keep clear and accurate records of the proceedings of each body. A Sergeant at Arms is elected by the Senate and designated by the House to assist the presiding officer in maintaining order and providing services. Each house also employs other personnel to provide necessary support services.

Elections and qualifications

The Constitution requires that members of the Legislature be elected at the general election in November of even-numbered years. Party candidates are nominated in party primary elections held prior to the general elections. Members of the Legislature must be at least 21 years old, electors and residents of the district they represent, and Florida residents for two years prior to election. No person may serve in the Legislature while employed by the federal or state government.

Compensation

Legislators are paid \$18,000 annually. Like other state and local government employees, they are paid travel expenses when on official business and when in session. Each house also provides expense allowances for maintaining local offices to better serve the citizens of the district.

Legislative sessions

Two weeks after each general election, the Legislature convenes for the exclusive purpose of organization and election of officers. Even though the officers are formally elected during this organization session, they have been designated previously. No legislation is considered during the organization session.

Regular sessions of the Legislature begin on the first Tuesday after the first Monday in April in odd-numbered years and continue for sixty consecutive days. While the Legislature may by law change its convening date in even-numbered years, the date is usually the same as in odd-numbered years.

Special sessions may be called by the Governor, or may be convened by joint proclamation of the President of the Senate and the Speaker of the House. Special sessions may not exceed twenty days, unless extended by a three-fifths vote of each house. Each "call" for a special session outlines the business to be considered, and matters "outside the purview" of the call cannot be taken up unless two-thirds of the members of each house consent. The Legislature may also be convened in extra session if three-fifths of the members of both houses agree. When in extra session, the Legislature may consider any subject as if convened in regular session, but an extra session is limited to thirty days. The President of the Senate may convene the Senate in special session to consider executive suspensions even when the House of Representatives is not meeting.

Rules

During the organization session, each house adopts its rules of procedure to be followed for the next two years. The rules provide for orderly proceedings and determine how each house will conduct its business. Frequently, a legislator will move to "waive the rules" to speed the flow of business, but at least two-thirds of the members of the respective houses must agree before the rules can be waived.

Committees

The traditional framework through which ideas and needs are converted into legislation is the committee system. The committee is the heart of the legislative process, functioning to study, research, and plan solutions to "people problems."

The Senate and House rules provide for certain standing committees, special

or select committees, and subcommittees. The presiding officers name the chairmen and members of all committees.

The formation of committees creates small groups of legislators who can give a bill closer study than would be possible in debate on the floor. Although each house, sitting as a “committee of the whole”, could consider in detail each proposed piece of legislation, smaller committees can perform the task more thoroughly and more efficiently. The committee system has been constantly strengthened by the employment of trained and expert staff who work year-round to retain continuity in research programs.

Bills are assigned to one or more committees for study. In this preliminary screening the committees may hold public hearings where committee members hear sponsoring legislators and others in the industry or profession, the governmental agency, or the general public, who are interested in the bill. The committee then votes to recommend the bill favorably, unfavorably, or favorably with amendments to be considered when the bill is debated on the floor.

When the Senate and House are unable to agree on the final content of a bill, it goes to a conference committee. This committee, composed of members of both houses, tries to resolve the differences between the Senate and House versions of a bill. The conference committee report must be approved by both houses.

Other committees commonly used are joint committees, which are composed of members from each house; and select committees, which are usually appointed to make recommendations on special or unique problems.

The Joint Legislative Management Committee supervises services which can be shared by both houses, thereby affording better facilities at a reduced cost. The Legislative Auditing Committee, another joint Senate-House committee, employs an Auditor General who audits governmental agencies.

Florida’s Public Counsel is also an office of the Legislature. The Public Counsel represents Florida consumers in utility and limited insurance rate cases.

Administrative Procedures is another joint legislative committee. It reviews regulations passed by executive agencies based on Florida laws. ACIR stands for Advisory Council on Intergovernmental Relations and is also considered partly legislative.

Lobbying The definition of a lobbyist includes everyone who tries to influence legislators, except persons who make a single appearance before a committee without receiving additional compensation. All persons who seek to influence legislation, except members of the Legislature or their aides and the exception mentioned above, must register with the Secretary of the Senate or the Clerk of the House before they begin lobbying. Every lobbyist must also state any direct business association or partnership with any current member of the Legislature.

Journals and calendars

The Secretary of the Senate and the Clerk of the House publish a journal and a calendar daily during the legislative session. The journal details the proceedings on the floor, committee reports and related actions of the previous day. The calendar is a schedule of business to be taken up that day and the next, including committee meetings and bills to be considered.

The journal and the calendar are given to legislators each morning before the session convenes and are available to other interested parties. The calendar is of special significance to persons interested in the progress of particular bills, since it lists the order of bills scheduled for floor action and committee consideration.

A “special order” of bills to be considered “on the floor” is set each day by a subcommittee of the Rules and Calendar Committee and is published in the daily calendar.

Forms of legislation

Legislative proposals may be in the form of bills, resolutions, concurrent resolutions, joint resolutions, or memorials.

A bill is a proposed law, and it may be either a general bill or a local bill. A general bill would have a general impact within the state; a local bill would affect only a particular county or town named in the bill. Prior to its introduction, a local bill must either be advertised in the area to be affected, or it must contain a provision to allow the voters in the area to accept or reject the measure if it is passed by the Legislature. A majority vote is required to pass a bill.

A resolution expresses the opinion of one house of the Legislature, whereas a concurrent resolution expresses the opinion of both houses. A joint resolution is usually a proposal to amend the State Constitution, to apportion the Legislature, to set the effective date of a vetoed bill when the veto is overridden, or to recess for more than seventy-two hours. Resolutions, concurrent resolutions, and joint resolutions are passed by a majority vote, except that a three-fifths vote of the members of both houses is required to pass a joint resolution that proposes an amendment to the State Constitution.

A memorial is a petition addressed to the President of the United States, the Congress, or some official agency of the federal government. It requests action or expresses the Legislature’s collective viewpoint and is passed by a majority vote.

The Process

When a Senator wishes to propose a new law, he or she requests a bill be drafted by the offices of the Secretary of the Senate. After the bill is drafted the Senator signs it and files it for introduction. Upon introduction the President assigns the bill to one or more committees.

After a notice is published in the calendar, the committees meet in open session to hear debate on the bill, and vote to recommend it favorably or unfavorably to the entire Senate.

When the committee reports are received by the Secretary of the Senate, they are published in the journal. If the reports are favorable, the bill is placed on the calendar of bills available for second reading. After the Rules and Calendar Committee assigns it to "special order calendar" it may then be read a second time and is subject to amendment. If amended, the changes are incorporated into the bill and it is then returned to the floor as a bill available for third reading. When the bill is read a third time, general debate is allowed and a final vote is taken.

If the bill receives a favorable vote, it is delivered by messenger to the House of Representatives, where it works its way through House committees to the floor for action by the full House. If the House amends the bill, it must go back to the Senate. If the Senate does not approve of the House amendments, then the bill may go to a conference committee where a compromise version of the bill is agreed upon. When the bill is approved by both houses, in exactly the same form, the bill becomes an act. It is then enrolled as a part of the official records by the Secretary of the Senate and is certified to the Governor for his action.

An act becomes a law when signed by the Governor, or after the passage of a time specified in the Constitution it becomes law without his signature. Within the time set forth in the Constitution, the bill is subject to the Governor's veto. If the Governor disapproves of legislation, he must return the bill with his written objections to the house in which the bill originated. The veto may be overridden by a two-thirds vote of the members of each house, and the act thus becomes law, the Governor's veto to the contrary notwithstanding.

The appropriations bill is one of the most important bills considered by the Legislature. This bill is the state's budget and it determines the amount of money available to various state agencies during the next year. The appropriations bill follows the same course as other general bills, but because it is difficult to get both houses to agree on all items in the bill, a conference committee is usually appointed to resolve the differences.

Impeachments

The Governor, Lieutenant Governor, members of the Cabinet, justices of the Supreme Court, and judges of the District Courts of Appeal and Circuit Courts may be removed from office only by impeachment. The House of Representatives has the sole power to impeach, that is, to bring charges. The Senate then tries all impeachments, with the Chief Justice of the Supreme Court presiding. A two-thirds vote of the House of Representatives is required to impeach, and a two-thirds vote of the Senate is required to convict. If convicted, the officer is removed from office.

About the Back Cover

The back cover focuses on the entrance to the Senate Chamber through the display of Florida's five flags in the rotunda on the fourth floor of the Capitol. The picture below combines the old and new, with the Senate Office Building and the new Capitol front and center and the old Capitol on the right. Both photos by Richard Bivins, Senate staff graphic artist.



Prepared by the Secretary of the Senate

This publication was produced at a cost of \$.48 per copy for the purpose of informing the public about the organization and operation of the Florida Senate.