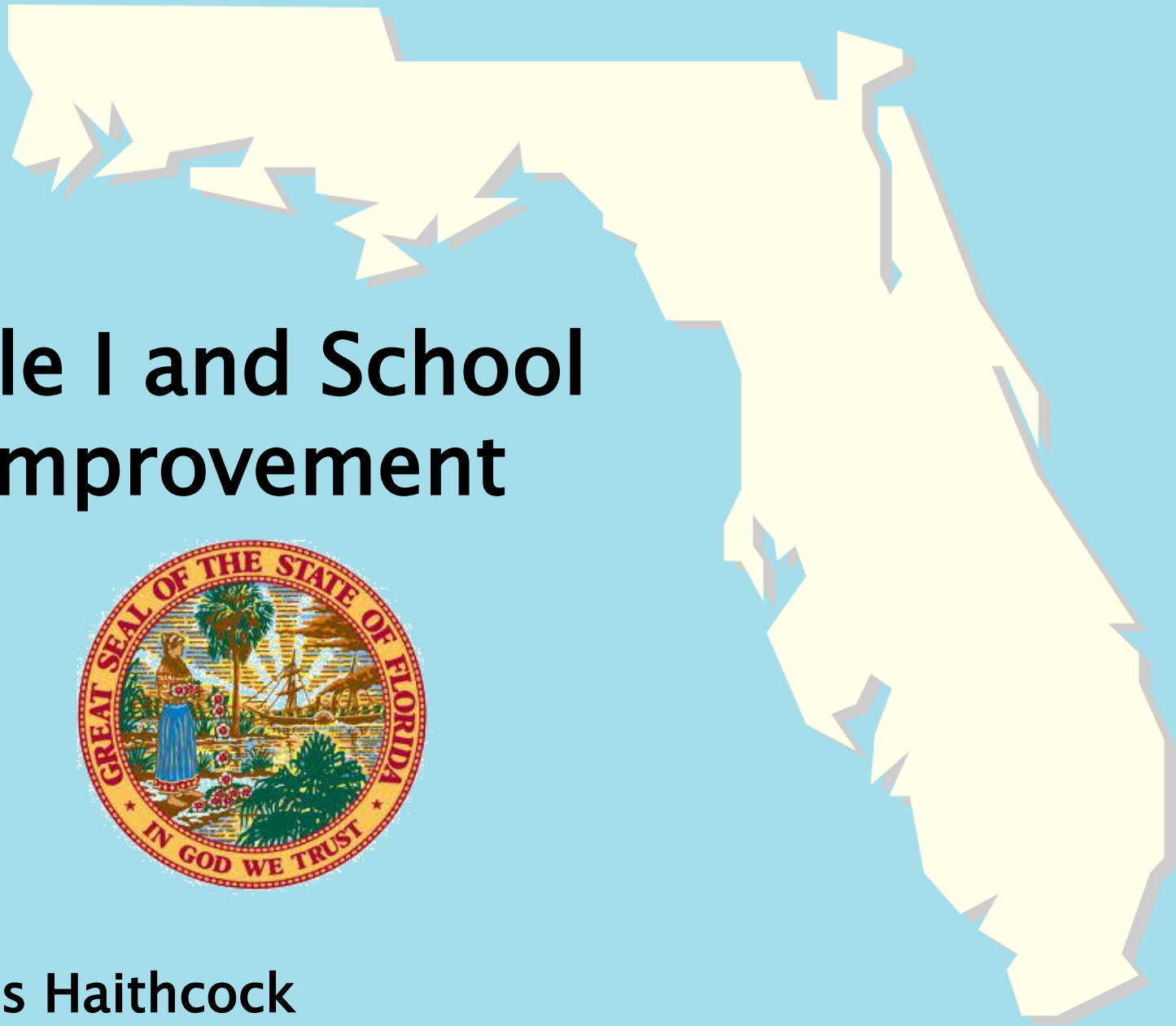


The Florida Senate
COMMITTEE MEETING EXPANDED AGENDA
BUDGET SUBCOMMITTEE ON EDUCATION PRE-K - 12
APPROPRIATIONS
Senator Simmons, Chair
Senator Montford, Vice Chair

MEETING DATE: Thursday, February 17, 2011
TIME: 8:00 —10:15 a.m.
PLACE: *Pat Thomas Committee Room, 412 Knott Building*

MEMBERS: Senator Simmons, Chair; Senator Montford, Vice Chair; Senators Detert, Dockery, Flores, Lynn, Ring, Siplin, and Wise

TAB	BILL NO. and INTRODUCER	BILL DESCRIPTION and SENATE COMMITTEE ACTIONS	COMMITTEE ACTION
1	Review of Recurring Appropriations for 2011-12		
2	Review of Extended School Day Options		
3	Digital Instructional Materials Discussion		
4	School District Audit Overviews		
5	Race to the Top Implementation Update		
6	Class Size Reduction Policy Discussion		
7	Pay Negotiation Update		
8	Workshop on Program Efficiencies and Alternatives for Cost Savings		
	Budget Work Session		



Title I and School Improvement



Dr. Frances Haithcock
Senate PreK–12 Education Appropriations Subcommittee
February 17, 2011

Funding Overview

	Non-ARRA	ARRA	Total
Title I, Part A, Basic	\$718,131,372	\$489,594,205	\$1,204,442,689
Choice/SES	\$135,186,272	\$92,342,815	\$227,529,087
Sch. Improvement	\$23,981,829	\$19,623,014	\$43,604,843
School Improvement Grant (SIG)	\$26,206,422	\$144,035,059	\$170,241,481

- Non-ARRA funds – available to districts for 2010-11 with possibility of extension
- Title I, Basic ARRA funds – available to districts through September 30, 2011
- SIG ARRA funds – available to districts through September 30, 2013



Title I, Part A, Basic

	Non-ARRA	ARRA	Total
Title I, Part A, Basic	\$718,131,372	\$489,594,205	\$1,204,442,689

- Devoted to facilitating a high-quality education by providing resources to schools with economically disadvantaged students
- Resources include additional teachers, professional development, extra time for teaching, and parent involvement activities
- Schools must have at least 35% of students receiving Free/Reduced lunch
- Each district must submit an application describing how the funds will be allocated and utilized by eligible schools to improve the academic achievement of students based on a needs assessment
- 1,801 Title I schools served in 2009-10
- Non-ARRA funds – available to districts for 2010-11 with possibility of extension
- Title I, Basic ARRA funds – available to districts through September 30, 2011



Title I, Part A

- ▶ Districts must set aside a portion of the Title I funds for the following purposes
 - Highly Qualified Teachers
 - Parental Involvement
 - Homeless
 - Neglected and Delinquent
 - LEA-wide Activities
 - Ten percent (10%) for Professional Development (SINI I and SINI II schools)
 - Twenty percent (20%) for Public Choice/SES



Supplemental Educational Services (SES)

	Non-ARRA	ARRA	Total
Choice/SES	\$135,186,272	\$92,342,815	\$227,529,087

- Title I, Part A of No Child Left Behind Act of 2001 (NCLB), calls for parents of eligible students attending Title I schools that have **not made adequate yearly progress (AYP)** in increasing student academic achievement to be **provided with opportunities and choices** to help ensure that their children achieve at high levels.
- **SES provides extra academic assistance for eligible children.** In Florida, students from low income families who are attending Title I schools that are in school improvement (i.e., have not made AYP for **two years**), in corrective action, or in restructuring status are eligible to receive these services.

- Non-ARRA funds – available to districts for 2010-11 with possibility of extension
- Title I, Basic ARRA funds – available to districts through September 30, 2011



SES Process

- ▶ **DOE is required to identify entities**, both public and private, that qualify to provide these services. These entities are identified through an application process.
- ▶ Parents of eligible students are then notified, by the district, that SES will be made available, and **parents may select** any approved provider in the geographic area served by the district or within a reasonable distance of that area that they feel will best meet their child's needs.
- ▶ The LEA **signs an agreement** with the provider selected by the parent, and the provider will then **provide services** to the child and **report on the child's progress** to the parents and to the LEA.



SES Evaluation

▶ Compliance items:

- Use of effective research-based practices
- Restrictions regarding use of incentives
- Calendar for activities
- Establishment of specific academic goals for each child
- Confidentiality
- Rules regarding health, safety and civil rights requirements
- Measurement of student progress/academic achievement



Title I, Part A, School Improvement Grants

	Non-ARRA	ARRA	Total
Sch. Improvement	\$23,981,829	\$19,623,014	\$43,604,843

- ▶ To increase the achievement of students scoring below proficiency in reading, mathematics, or writing on FCAT in Title I Schools identified in need of improvement, corrective action, or restructuring
- ▶ Serves schools in all 67 districts

- Non-ARRA funds – available to districts for 2010-11 with possibility of extension
- Title I, Basic ARRA funds – available to districts through September 30, 2011



School Improvement Grants (SIG)

	Non-ARRA	ARRA	Total
School Improvement Grant (SIG)	\$26,206,422	\$144,035,059	\$170,241,481

- ▶ These School Improvement funds are awarded separately from the Title I, Part B, Basic funds described previously
- ▶ Also known as “School Turnaround Grants”
- ▶ Federal requirements are much more stringent

- Non-ARRA funds – available to districts for 2010-11 with possibility of extension
- SIG ARRA funds – available to districts through September 30, 2013



School Improvement Grants (SIG)

▶ Qualified Schools:

Elementary	17
Middle	12
High	43
Combination	5
TOTAL	77

- ▶ Thirty-two (32) D and F schools received this SIG funding based upon the tiered identification process.
- ▶ Minimum funding for Tier I and Tier II schools set at \$500,000 per school/per year



How Were Schools Identified?

- ▶ Three Tiers Were Developed:
 - Tier I – Title I school, Persistently Lowest–Achieving (Lowest 5%) and have a Grad Rate less than 60%
 - Tier II – New Title I and Title I Eligible Schools, Persistently Lowest–Achieving (Lowest 5%), and have a Grad Rate less than 60%
 - Tier III – Title I, Lowest 25% of performance, Does not meet criteria for Tier I or Tier II



Key Components

- ▶ Extending learning time
- ▶ Incentives for recruitment, retention and performance pay for effective administrators and instructional staff
- ▶ Ensure highly qualified staff placement as indicated by student learning gains
- ▶ Provide common planning time to facilitate job-embedded professional development and support Lesson Study
- ▶ Develop a teacher evaluation system inclusive of student performance outcomes



Extended Learning Opportunities

- ▶ Through SIG all schools were required to extend their learning day.
- ▶ Extended day activities selected by districts reflects the following:

Activity	Number of Schools	Percentage of Total SIG Schools
Lengthening school day	45	66%
Before or After School/Saturday Activities	35	51%
Extending VPK	3	4%
Combination of Activities Above	27	40%



Florida Department of Education
Increased Learning Time: A Summary of Selected District Practices

Background Information

“Increased learning time” has been defined by the U.S. Department of Education to mean, “... using a longer school day, week, or year schedule to significantly increase the total number of school hours to include additional time for (a) instruction in core academic subjects including English, reading or language arts, mathematics, science, foreign languages, civics and government, economics, arts, history, and geography; (b) instruction in other subjects and enrichment activities that contribute to a well-rounded education, including, for example, physical education, service learning, and experiential and work-based learning opportunities that are provided by partnering, as appropriate, with other organizations; and (c) teachers to collaborate, plan, and engage in professional development within and across grades and subjects.”¹

Instructional Models and Funding Sources

Based on a review of 2010-11 data related to proposed expenditures for Title I schools and those identified as persistently low-achieving, the following instructional models are being implemented to provide selected students with increased learning time by extending:

- learning into before- and after-school hours
- designated schools days (e.g., Tuesday and Thursday)
- all school days
- the school week (e.g., Saturday School)
- the school year (e.g., instructional programs during winter holidays, spring break)
- learning into the summer (e.g., summer camps).

The above instructional models for extended learning opportunities may be funded through the district’s Title I, Part A (Improving the Academic Achievement of Disadvantaged Children and Youth), and/or School Improvement (1003(g)) funds.

Selected Districts

Information related to increased learning time for Alachua, Escambia, Nassau, Osceola, and Pasco is described below.

¹ U.S. Department of Education, *Guidance on School Improvement Grants Under Section 1003(g) of the Elementary and Secondary Education Act of 1965*, December 18, 2009, pages 9-10.

Alachua County

As reported in the district's Title I, School Improvement (1003(g)) application, the following extended learning opportunities are offered.

- Charles W. Duval Elementary – Extended day model to increase the instructional day by 45 minutes, four days per week; total school enrollment estimated at 428 students; estimated budget is \$313,806.
- Hawthorn Middle/High School – Extended day mode to increase the instructional day by 25 minutes; total school enrollment estimated at 393; estimated budget is \$131,142.
- Marjorie Kinnan Rawlings Elementary – Extended day model to increase the instructional day by 45 minutes, four days per week; total school enrollment estimated at 401 students; estimated budget is \$209,204.

Escambia County

As reported in the district's Title I Part A application, the following extended learning opportunities are offered.

- O.J. Semmes Elementary – Saturday tutoring provided to students identified as non-proficient by “Saturday Scholars;” total school enrollment estimated at 325; estimated budget is at \$5,600.

Nassau County

As reported in the district's Title I Part A application, the following extended learning opportunities are offered.

- Callahan Elementary – Extended day tutoring for students scoring in the red or yellow zones on the Florida Assessments for Instruction in Reading (FAIR) and scoring below grade level on the baseline math assessment; total school enrollment estimated at 625; estimated budget is \$4,000.

Osceola County

As reported in the district's Title I, School Improvement (1003(g)) application, the following extended learning opportunities are offered.

- Gateway High School – Instructional time is increased by adding a seventh period in 2009-10 and 2010-11; total school enrollment estimated at 2,276; estimated budget is \$202,800 (funded via School Improvement and 21st Century grants).
- Poinciana High School – Instructional time was increased by adding a seventh period in 2009-10 and 2010-11; total school enrollment estimated at 1,189; estimated budget is \$202,800 (funded via School Improvement and 21st Century grants).

Pasco County

As reported in the district's Title I, School Improvement (1003(g)) application, the following extended learning opportunities are offered.

- Ridgewood High School – The school day was restricted to add 20 minutes of instructional time for a Critical Thinking and Study Skills class; total school enrollment estimated at 1,856; estimated budget is \$264,268.

Title I, Part A, Improving the Academic Achievement of Disadvantaged Children and Youth

District	Non-ARRA	ARRA	Total	FTE*	Per FTE Amount
Alachua	7,520,574	5,239,343	12,759,917	12,827.30	994.75
Baker	942,702	459,004	1,401,706	2,360.22	593.89
Bay	6,648,276	4,323,843	10,972,119	13,295.54	825.25
Bradford	1,213,030	619,501	1,832,531	1,980.00	925.52
Brevard	15,028,458	9,381,288	24,409,746	29,392.47	830.48
Broward	65,126,438	49,751,800	114,878,238	137,217.61	837.20
Calhoun	721,265	412,469	1,133,734	1,342.00	844.81
Charlotte	3,109,901	1,823,802	4,933,703	3,538.33	1,394.36
Citrus	4,542,132	2,350,185	6,892,317	8,316.87	828.72
Clay	3,898,115	2,358,488	6,256,603	12,667.30	493.92
Collier	10,011,138	5,368,425	15,379,563	24,599.10	625.21
Columbia	3,271,794	1,459,326	4,731,120	6,064.26	780.16
Miami-Dade	126,496,518	99,027,779	225,524,297	239,733.81	940.73
DeSoto	2,476,517	1,613,754	4,090,271	3,576.19	1,143.75
Dixie	1,044,724	612,015	1,656,739	1,458.38	1,136.01
Duval	37,446,648	30,434,611	67,881,259	33,114.87	2,049.87
Escambia	14,530,302	10,730,342	25,260,644	23,580.96	1,071.23
Flagler	2,517,810	1,092,181	3,609,991	7,541.40	478.69
Franklin	636,981	363,165	1,000,146	945.72	1,057.55
Gadsden	3,334,872	2,149,656	5,484,528	4,735.13	1,158.26
Gilchrist	726,590	374,228	1,100,818	1,481.24	743.17
Glades	573,846	343,473	917,319	797.87	1,149.71
Gulf	651,654	331,214	982,868	1,014.00	969.30
Hamilton	1,174,560	774,100	1,948,660	1,333.28	1,461.55
Hardee	2,176,748	1,265,874	3,442,622	3,844.07	895.57
Hendry	2,847,588	1,622,685	4,470,273	5,250.53	851.39
Hernando	4,973,172	2,676,793	7,649,965	12,465.71	613.68
Highlands	4,112,039	2,656,151	6,768,190	8,169.04	828.52
Hillsborough	55,235,463	36,169,731	91,405,194	107,097.67	853.48
Holmes	1,256,395	726,399	1,982,794	2,102.75	942.95
Indian River	3,732,357	1,992,656	5,725,013	9,393.23	609.48
Jackson	2,079,672	1,163,680	3,243,352	3,861.12	840.00
Jefferson	746,150	437,783	1,183,933	825.36	1,434.44
Lafayette	348,264	237,713	585,977	677.13	865.38
Lake	8,867,952	4,978,442	13,846,394	21,948.59	630.86
Lee	18,789,666	11,642,167	30,431,833	50,128.02	607.08
Leon	7,972,999	3,826,641	11,799,640	14,327.62	823.56
Levy	2,300,922	1,475,693	3,776,615	3,878.61	973.70
Liberty	632,006	418,488	1,050,494	754.89	1,391.59
Madison	1,433,013	914,333	2,347,346	2,063.24	1,137.70
Manatee	11,152,316	6,640,177	17,792,493	23,417.68	759.79
Marion	14,641,506	8,721,378	23,362,884	25,727.13	908.10
Martin	2,920,189	1,655,360	4,575,549	6,856.42	667.34
Monroe	1,566,095	838,112	2,404,207	3,342.56	719.27
Nassau	1,608,764	993,607	2,602,371	4,888.48	532.35
Okaloosa	4,782,867	3,527,808	8,310,675	10,951.14	758.89
Okeechobee	2,438,527	1,133,425	3,571,952	4,556.72	783.89
Orange	46,635,195	29,879,628	76,514,823	99,836.41	766.40
Osceola	11,863,601	7,146,418	19,010,019	33,352.43	569.97
Palm Beach	41,432,691	29,237,248	70,669,939	87,970.04	803.34
Pasco	15,566,562	11,019,736	26,586,298	33,545.34	792.55
Pinellas	27,950,470	21,095,121	49,045,591	51,073.73	960.29
Polk	30,284,894	18,838,443	49,123,337	60,973.08	805.66
Putnam	5,307,499	2,555,989	7,863,488	8,455.29	930.01
St. Johns	2,937,218	1,638,894	4,576,112	6,595.44	693.83
St. Lucie	10,054,558	6,045,535	16,100,093	23,383.90	688.51
Santa Rosa	3,829,538	2,602,220	6,431,758	10,559.64	609.09
Sarasota	6,963,431	4,594,184	11,557,615	20,032.81	576.93
Seminole	9,288,541	6,090,708	15,379,249	26,160.68	587.88
Sumter	2,507,752	1,224,476	3,732,228	4,377.33	852.63
Suwannee	2,264,826	1,301,704	3,566,530	4,027.68	885.50
Taylor	1,200,428	670,817	1,871,245	1,888.32	990.96
Union	603,159	187,983	791,142	1,296.81	610.07
Volusia	19,356,419	15,267,330	34,623,749	34,586.58	1,001.07

Title I, Part A, Improving the Academic Achievement of Disadvantaged Children and Youth

District	Non-ARRA	ARRA	Total	FTE*	Per FTE Amount
Wakulla	963,246	455,159	1,418,405	2,417.16	586.81
Walton	2,412,322	1,017,091	3,429,413	4,001.77	856.97
Washington	1,444,244	649,687	2,093,931	2,221.16	942.72
Washington Special	-	-	-	-	-
FAMU Lab School	281,677	196,892	478,569	203.00	2,357.48
FAU - Palm Beach	461,751	338,145	799,896	835.49	957.40
FAU - St. Lucie	-	-	-	521.00	-
FSU Lab - Broward	-	-	-	-	-
FSU Lab - Leon	379,889	128,643	508,532	521.00	976.07
UF Lab	168,960	173,728	342,688	205.70	1,665.96
Virtual School	-	-	-	25.00	-
FLA SCH DEAF & BLIND**	430,100	129,338	559,438	603.00	927.76
TOTAL TITLE I	714,848,493	489,594,205	1,204,442,698		
Includes unspent funds from prior year	(3,307,164)				
State Administration 1%	6,590,043				
TOTAL TITLE I - NON-ARRA	718,131,372				

* Unweighted FTE for students eligible for Free/Reduced Price Lunch

**Enrollment of students eligible for Free/Reduced Price Lunch

Florida Department of Education

Title I, School Improvement*

District	Title I, Part A, School Improvement Allocations - Non-ARRA	Title I, Part A, School Improvement Allocations- ARRA	TOTAL Title I, Part A, School Improvement	Membership**	Per FTE Amount
Alachua	1,051,948	5,781,689	6,833,637	1,063.00	6,428.63
Baker	-	-	-	-	-
Bay	-	-	-	-	-
Bradford	-	-	-	-	-
Brevard	-	-	-	-	-
Broward	1,051,948	5,781,689	6,833,637	2,722.00	2,510.52
Calhoun	-	-	-	-	-
Charlotte	-	-	-	-	-
Citrus	-	-	-	-	-
Clay	-	-	-	-	-
Collier	701,299	3,854,459	4,555,758	2,755.00	1,653.63
Columbia	350,649	1,927,230	2,277,879	1,768.00	1,288.39
Miami-Dade	6,662,338	36,617,364	43,279,702	21,558.00	2,007.59
DeSoto	-	-	-	-	-
Dixie	-	-	-	-	-
Duval	3,857,143	21,199,526	25,056,669	9,930.00	2,523.33
Escambia	350,649	1,927,230	2,277,879	738.00	3,086.56
Flagler	-	-	-	-	-
Franklin	-	-	-	-	-
Gadsden	701,299	3,854,459	4,555,758	1,366.00	3,335.11
Gilchrist	-	-	-	-	-
Glades	-	-	-	-	-
Gulf	-	-	-	-	-
Hamilton	701,299	3,854,459	4,555,758	989.00	4,606.43
Hardee	350,649	1,927,230	2,277,879	1,243.00	1,832.57
Hendry	350,649	1,927,230	2,277,879	853.00	2,670.43
Hernando	701,299	3,854,459	4,555,758	3,047.00	1,495.16
Highlands	-	-	-	-	-
Hillsborough	701,299	3,854,459	4,555,758	1,725.00	2,641.02
Holmes	-	-	-	-	-
Indian River	-	-	-	-	-
Jackson	-	-	-	-	-
Jefferson	350,649	1,927,230	2,277,879	1,038.00	2,194.49
Lafayette	-	-	-	-	-
Lake	350,649	1,927,230	2,277,879	1,680.00	1,355.88
Lee	-	-	-	-	-
Leon	350,649	1,927,230	2,277,879	1,132.00	2,012.26
Levy	350,649	1,927,230	2,277,879	658.00	3,461.82
Liberty	-	-	-	-	-
Madison	350,649	1,927,230	2,277,879	1,952.00	1,166.95
Manatee	-	-	-	-	-

Title I, School Improvement*

District	Title I, Part A, School Improvement Allocations - Non-ARRA	Title I, Part A, School Improvement Allocations- ARRA	TOTAL Title I, Part A, School Improvement	Membership**	Per FTE Amount
Marion	-	-	-	-	-
Martin	-	-	-	-	-
Monroe	-	-	-	-	-
Nassau	-	-	-	-	-
Okaloosa	-	-	-	-	-
Okeechobee	-	-	-	-	-
Orange	1,051,948	5,781,689	6,833,637	4,475.00	1,527.07
Osceola	1,051,948	5,781,689	6,833,637	8,883.00	769.29
Palm Beach	1,051,948	5,781,689	6,833,637	3,301.00	2,070.17
Pasco	350,649	1,927,230	2,277,879	1,287.00	1,769.91
Pinellas	1,402,597	7,708,919	9,111,516	6,349.00	1,435.11
Polk	350,649	1,927,230	2,277,879	415.00	5,488.87
Putnam	-	-	-	-	-
St. Johns	350,649	1,927,230	2,277,879	244.00	9,335.57
St. Lucie	-	-	-	-	-
Santa Rosa	-	-	-	-	-
Sarasota	-	-	-	-	-
Seminole	-	-	-	-	-
Sumter	-	-	-	-	-
Suwannee	-	-	-	-	-
Taylor	-	-	-	-	-
Union	-	-	-	-	-
Volusia	-	-	-	-	-
Wakulla	-	-	-	-	-
Walton	-	-	-	-	-
Washington	-	-	-	-	-
Washington Special	-	-	-	-	-
FAMU Lab School	-	-	-	-	-
FAU - Palm Beach	-	-	-	-	-
FAU - St. Lucie	-	-	-	-	-
FSU Lab - Broward	-	-	-	-	-
FSU Lab - Leon	-	-	-	-	-
UF Lab	-	-	-	-	-
Virtual School	-	-	-	-	-
TOTAL ALLOCATIONS	24,896,101	136,833,309	161,729,410		
Administration	1,310,321	7,201,750	8,512,071		
TOTAL	26,206,422	144,035,059	170,241,481		
* Title I, School Improvement 1003(g)					
** Membership in eligible schools					



Senate PreK-12 Appropriations
Committee
Supplemental Academic
Improvement
February 17, 2011

Florida Department of Education
John Newman

S. 1011.62 (1)(f), Florida Statutes

Supplemental Academic Instruction:

- To provide the most efficient & effective way to help students progress and graduate
- May be provided any time during or after the school year
- Strategies may include:
 - Modified curriculum
 - Reading instruction
 - Tutoring
 - After school instruction
 - Mentoring
 - Class size reduction
 - Extended school year
 - Summer school

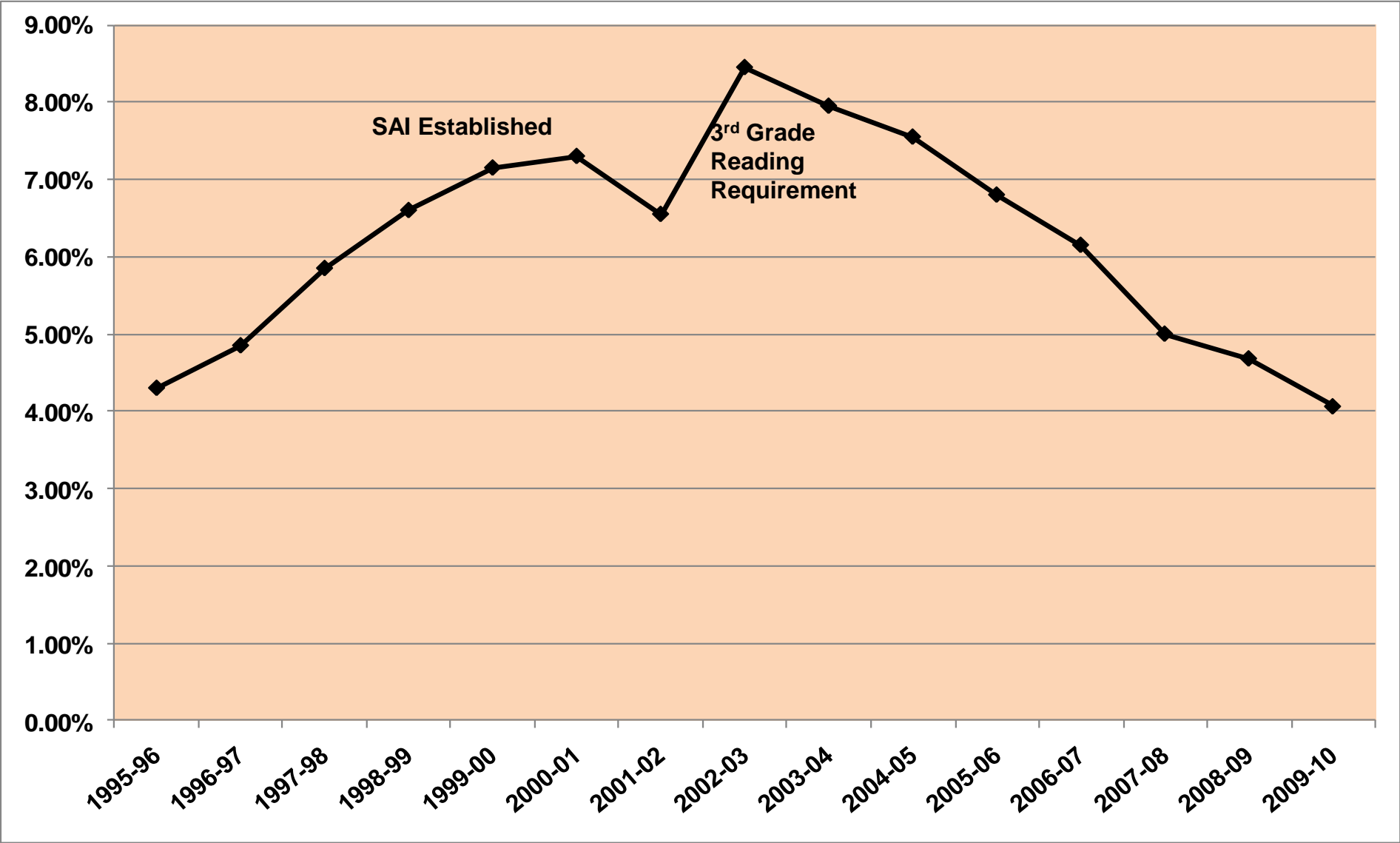
Supplemental Academic Instruction (SAI)

1999-2000	<ul style="list-style-type: none">■ K-8 Summer School Categorical■ 9-12 Summer School FTE■ Dropout Prevention Supplement■ Compression Funding■ Workload
2000-2001	<ul style="list-style-type: none">■ Workload Changes■ Equity Adjustment■ FEFP Disparity Compression Adjustment
2002-2003	<ul style="list-style-type: none">■ Requirement for Plans and Annual Reports Deleted
2005-2006 through 2007-2008	<ul style="list-style-type: none">■ Workload Adjustments
2008-2009 through 2009-2010	<ul style="list-style-type: none">■ Budget Reduction
2010-2011	<ul style="list-style-type: none">■ Workload Adjustments

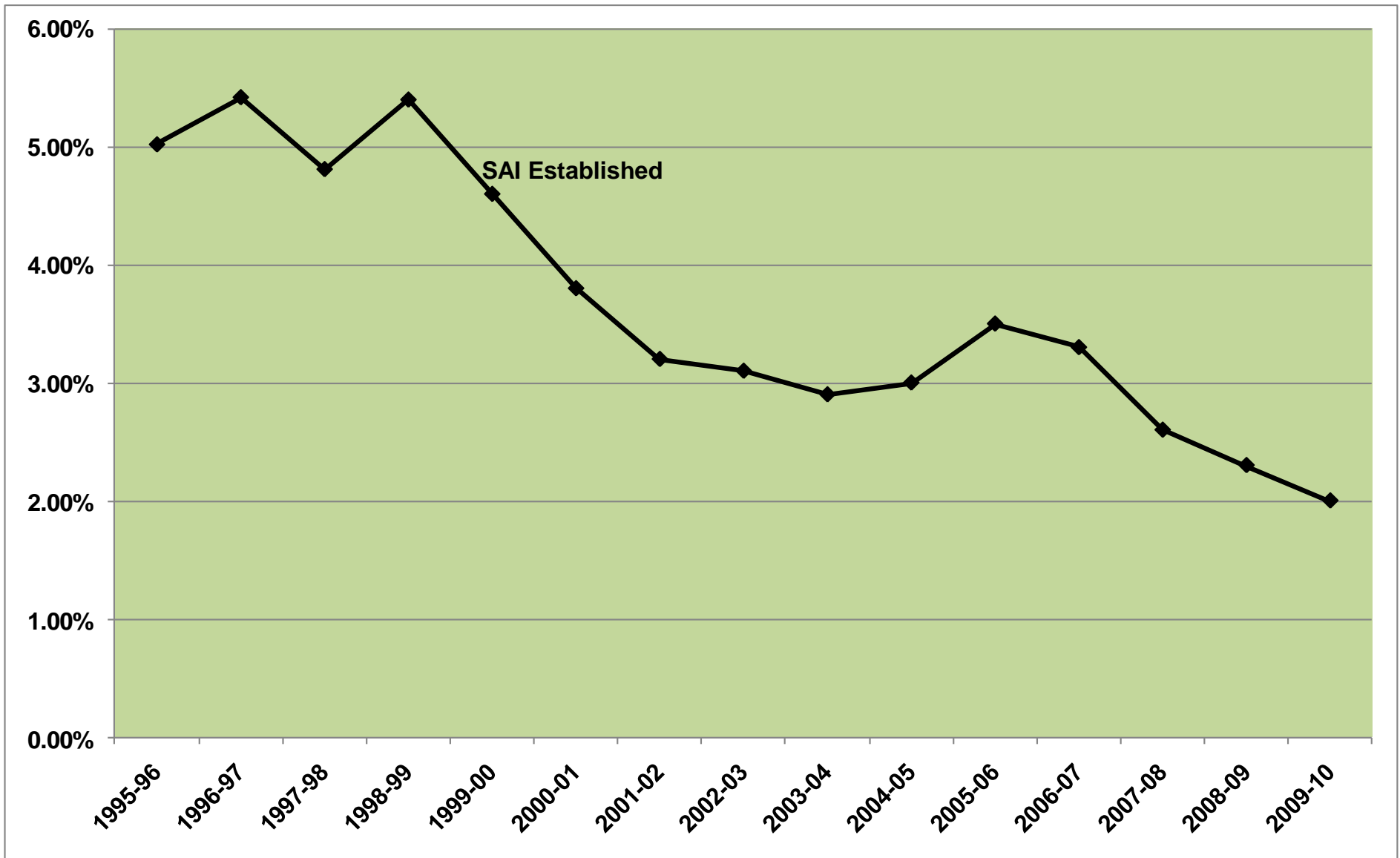
Supplemental Academic Instruction Funding History

Year	Amount
1999-2000	\$523,536,284
2000-2001	\$662,632,143
2001-2002	\$653,922,659
2002-2003	\$653,922,659
2003-2004	\$653,922,659
2004-2005	\$653,922,659
2005-2006	\$670,341,490
2006-2007	\$707,826,199
2007-2008	\$721,521,711
2008-2009	\$687,015,407
2009-2010	\$637,781,383
2010-2011	\$639,315,534

Statewide Average Non-Promotion Rate



Florida High School Dropout Rate



FLORIDA DEPARTMENT OF EDUCATION

2009-10 and 2010-11
SAI Funding Per Student

District	2009-10	2009-10	2009-10	2010-11	2010-11	2010-11
	UFTE	SAI	SAI Per UFTE	UFTE	SAI	SAI Per UFTE
	-1-	-2-	-3-	-4-	-5-	-6-
1 Alachua	27,077.11	7,705,156	285	26,847.93	7,671,344	286
2 Baker	4,967.85	1,907,962	384	4,954.43	1,909,704	385
3 Bay	25,152.79	7,572,792	301	25,109.10	7,490,732	298
4 Bradford	3,139.20	1,086,847	346	3,132.86	1,043,506	333
5 Brevard	71,592.08	19,336,832	270	71,072.08	19,159,324	270
6 Broward	255,174.05	52,597,803	206	255,499.62	52,983,431	207
7 Calhoun	2,183.34	488,042	224	2,188.56	488,381	223
8 Charlotte	16,562.65	3,800,584	229	16,310.59	3,726,765	228
9 Citrus	15,768.41	3,515,960	223	15,352.46	3,504,516	228
10 Clay	35,897.59	9,830,810	274	35,692.53	9,827,276	275
11 Collier	42,245.08	8,358,061	198	42,510.69	8,412,646	198
12 Columbia	10,008.78	3,853,497	385	9,755.61	3,872,855	397
13 Miami-Dade	343,953.31	116,842,993	340	344,441.45	117,656,882	342
14 DeSoto	5,039.18	1,636,745	325	4,992.55	1,641,083	329
15 Dixie	2,063.84	457,348	222	2,011.94	466,866	232
16 Duval	124,049.54	29,424,466	237	125,033.97	29,179,989	233
17 Escambia	40,187.12	9,532,468	237	39,943.87	9,446,381	236
18 Flagler	12,975.10	2,628,265	203	12,272.79	2,696,566	220
19 Franklin	1,223.65	303,473	248	1,272.15	302,580	238
20 Gadsden	5,873.43	1,347,788	229	5,818.54	1,324,128	228
21 Gilchrist	2,603.91	587,290	226	2,507.53	582,781	232
22 Glades	1,453.69	317,413	218	1,447.21	313,152	216
23 Gulf	1,972.59	423,170	215	1,953.10	407,466	209
24 Hamilton	1,697.90	410,204	242	1,717.79	394,578	230
25 Hardee	5,089.21	1,148,182	226	5,109.56	1,152,271	226
26 Hendry	6,883.95	1,638,858	238	6,774.88	1,585,125	234
27 Hernando	22,764.00	5,220,554	229	22,610.95	5,249,661	232
28 Highlands	12,089.89	2,544,927	211	12,064.71	2,551,943	212
29 Hillsborough	191,181.72	39,100,245	205	192,180.25	39,199,729	204
30 Holmes	3,287.79	721,969	220	3,304.74	721,398	218
31 Indian River	17,509.35	3,545,536	202	17,508.63	3,572,787	204
32 Jackson	7,047.96	1,451,737	206	6,893.00	1,443,394	209
33 Jefferson	1,138.95	300,187	264	1,077.42	307,138	285
34 Lafayette	1,127.06	210,829	187	1,010.36	211,494	209
35 Lake	40,553.61	9,384,373	231	40,472.55	9,468,692	234
36 Lee	79,509.34	16,874,301	212	80,823.56	17,137,554	212
37 Leon	32,688.53	9,022,599	276	33,252.08	9,062,280	273
38 Levy	5,820.46	1,324,302	228	5,617.32	1,314,513	234
39 Liberty	1,447.59	304,293	210	1,408.82	304,952	216
40 Madison	2,720.45	764,177	281	2,702.13	750,351	278
41 Manatee	42,348.94	8,694,800	205	43,487.79	8,769,576	202
42 Marion	41,375.50	13,018,721	315	41,260.88	13,022,833	316
43 Martin	17,609.06	3,687,406	209	17,705.12	3,680,347	208
44 Monroe	7,896.09	1,728,525	219	7,979.25	1,749,087	219
45 Nassau	11,144.76	2,504,954	225	11,141.39	2,540,441	228
46 Okaloosa	28,702.67	8,455,924	295	28,535.94	8,371,473	293
47 Okeechobee	6,908.64	1,715,466	248	6,761.31	1,703,332	252
48 Orange	171,820.11	37,651,463	219	174,051.79	37,869,178	218
49 Osceola	51,458.74	11,293,904	219	52,839.27	11,409,834	216
50 Palm Beach	171,658.88	33,165,989	193	173,078.71	33,651,291	194
51 Pasco	66,164.75	18,062,012	273	65,969.91	18,194,845	276
52 Pinellas	104,305.97	22,014,362	211	102,973.65	21,642,886	210
53 Polk	93,179.80	22,690,076	244	93,664.22	22,697,569	242
54 Putnam	11,050.14	2,847,638	258	10,870.42	2,829,271	260
55 St. Johns	29,645.67	5,846,834	197	30,487.73	5,984,541	196
56 St. Lucie	38,571.07	8,976,155	233	38,521.24	9,087,592	236
57 Santa Rosa	25,064.48	7,730,886	308	25,046.48	7,715,725	308
58 Sarasota	41,175.55	8,336,808	202	40,758.65	8,410,385	206
59 Seminole	64,157.54	15,943,611	249	63,812.54	15,793,281	247
60 Sumter	7,348.41	1,523,662	207	7,453.76	1,525,901	205
61 Suwannee	5,975.26	1,278,574	214	6,077.87	1,263,449	208
62 Taylor	2,880.86	695,480	241	2,850.19	675,844	237
63 Union	2,275.98	524,548	230	2,186.71	515,942	236
64 Volusia	62,060.65	16,942,387	273	61,248.24	16,734,376	273
65 Wakulla	5,184.80	1,012,964	195	5,117.62	1,009,525	197
66 Walton	7,091.21	1,245,543	176	7,313.55	1,256,868	172
67 Washington	3,462.35	879,958	254	3,451.95	881,612	255
68 Washington Special	408.37	143,471	351	291.08	141,526	486
69 FAMU Lab School	536.00	285,090	532	516.21	287,721	557
70 FAU - Palm Beach	638.62	199,846	313	679.93	205,793	303
71 FAU - St. Lucie	1,459.20	423,000	290	1,439.37	421,801	293
72 FSU Lab - Broward	657.00	145,583	222	659.40	143,538	218
73 FSU Lab - Leon	1,699.85	290,875	171	1,706.47	290,606	170
74 UF Lab School	1,137.31	301,830	265	1,145.73	301,331	263
75 Virtual School	18,551.07	-	-	23,060.45	-	-

State 2,629,327.35 637,781,383 243 2,638,795.13 639,315,534 242

Extended School Day Options for Discussion

1. Require an additional period for all K to 12, D and F schools (214 schools).
2. Require an additional period for K to 8, D and F schools (153 schools).
3. Require an additional period for the lowest 5% schools (77 schools, Differentiated Accountability).
4. Establish a priority in proviso for the Supplemental Academic Instruction Program within the FEFP, that first priority for the use of the funds shall be for extended school day for schools that are either D or F or have the lowest 5% performance. Example:

“From the funds in Specific Appropriation XXX, \$ XXX,XXX,XXX is for Supplemental Academic Instruction to be provided throughout the school year pursuant to section 1011.62(1)(f), Florida Statutes. If any district has a school with a grade of D or F or is on the Persistently Low Achieving (lowest 5%) list based on the Differentiated Accountability program, the first priority for the use of these funds, together with other available funds, shall be to provide an additional hour per day of instruction in reading and math for the students in such schools. These funds may be used to supplement intensive instruction, consistent with the Sunshine State Standards, including summer school and intensive English immersion and math instruction, for students in grades 3 and 10 who scored FCAT Level I in FCAT reading or math. Each district's Supplemental Academic Instruction allocation for 2011-2012 shall not be recalculated during the school year.”

5. Strongly encourage or incentivize the use of School Improvement Grant (SIG) funds or Title I Supplemental Education Services (SES) federal funds for extended school day programs in proviso or statute.
6. Create a grant program to provide supplemental funding to D or F middle or elementary schools to provide an additional hour of instruction each day to struggling students for either reading, writing, math, or science. Participating schools will submit a year-end report to the DOE to provide evidence of academic achievement and student growth.

5-Year Plan for Digital Instruction

“Reinventing Access to Instructional Resources”

Dr. Frances Haithcock
Chancellor, Division of Public Schools
Florida Department of Education
February 2011

Ten Elements of High Quality Digital Learning

1. Student Eligibility
2. Student Access
3. Personalized Learning
4. Advancement
5. Content
6. Instruction
7. Providers
8. Assessment and Accountability
9. Funding
10. Delivery

Florida's Current Process

- **Six-year adoption cycle** for the “major tool” used for instructional materials in each content area
- **Materials** in bound, unbound kit, or package form and may consist of hardbacked or softbacked, electronic, consumables, learning laboratories, manipulatives, electronic media and computer courseware or software
- **Appointed committees** of ten members including district staff, teachers, and lay citizens review submissions and meet face-to-face to recommend those submissions that will be proposed to the Commissioner of Education for adoption
- Adoption submissions must be made available by the vendor through a **Florida schoolbook depository**
- **Quantity and price** are guaranteed for the six-year contract period

IM Dollars are Funded Categorically

Current Requirements

- 50% must be spent on **“state adopted” instructional materials**
- 50% are “flex” dollars – must be spent on **instructional materials**

Proposed Flexibility

- 50% must be spent on **digital content**
- Remaining dollars must be spent on **instructional materials until all student needs have been met**
- When student needs are met funding can be used to **purchase technology to support digital content**

Current Requirements

2011-2012

- Vendors must submit electronic content for review
- Superintendent must make special request for hardcopy samples to review
- 50% of funds must be used to purchase adopted content
- Adoption process is electronic

2012-2013

- After this year grade 9-12 content must be in an electronic format
- 50% of funds must be used to purchase adopted content
- Adoption process is electronic

2013-2014 and beyond

- High school content adoptions will be electronic
- 50% of funds must be used to purchase adopted content
- Adoption process is electronic

5-year Plan Deliverables

- 1. New instructional materials review and adoption process** will be updated and defined by July 2011
- 2. Technical support** necessary for each school district regarding building the technology infrastructure to support increased use of digital instructional materials will be defined and available by July 2012
- 3. Approve 9-12 grade social studies digital content** material for adoption by July 2013
4. Technical support for school districts in the area of **teacher preparation** for use of digital content will be in place by July 2013
- 5. Approve 5-12 grade reading digital content** materials for adoption by July 2014
- 6. Approve K-12 grade English/Language Arts digital content** material for adoption by July 2015
- 7. Approve all K-12 instructional materials adopted in digital format** after July 2015

Proposed Legislation

2011-2012 and Beyond

- Vendors submit electronic content for digital review
- Superintendent must make special request for hardcopy to review
- 50% of funds must be used to purchase digital content
- Flexibility with unused funds to purchase tools that support digital content

2012-2013 and Beyond

- High school adoptions are electronic
- Social Studies

2013-2014 and Beyond

- Grades 5-12 adoptions are electronic
- Reading

K-12

- 2014-2015
- Language Arts
- 2015-2016
- Mathematics
- 2016-2017
- Science
- 2017-2018
- Social Studies

Estimated Costs

- Deliverable 1: \$75,000 (current annual appropriation; will be redirected to support the expert review of digital content; existing staff assigned to develop digital content review system that can be used even if laws do not change)
- Repurpose Master Digital Educators for local professional development

Note: From 2006-2010, districts received a total of \$1,220,017,485 FEFP funds for instructional materials.

Concurrent Events that Support *eReadiness – Electronic Assessment*

- 2011: Algebra 1 EOC, Grade 10 Math, and Grade 10 Math Retakes
- 2012: Four high school EOCs, Grade 7 Reading, Grade 10 Math Retakes, and PERT
- 2013: Four high school EOCs; Grades 7 and 10 Reading; Middle Grades Civics; Grade 7 Math; Grade 10 Math Retakes; and PERT
- 2014: Four high school EOCs; Grades 5, 7, and 10 Reading; Middle Grades Civics; Grade 7 Math; Grade 10 Math Retakes; and PERT
- 2015: Florida EOCs, Grades 5, 7, and 10 Reading; Middle Grades Civics; Grade 7 Math; Grade 10 Math Retakes; PERT; and PARCC in grades 3-8 English Language Arts and Mathematics and high school course assessments

Concurrent Events that Support *eReadiness – Race to the Top*

District Memorandum of Understanding

- (B)(3) - The LEA will ensure that each school possesses the technology, including hardware, connectivity, and other necessary infrastructure, to provide teachers and students sufficient access to strategic tools for improved classroom instruction and computer-based assessment.
- (C)(3) - An LEA that has an instructional improvement system will ensure that the system is being fully utilized; an LEA that does not have an instructional improvement system will acquire one.

Concurrent Events that Support *eReadiness – Race to the Top*

State Initiatives Ready for Implementation of Common Core State Standards in 2013-2014

- Online Teacher Standards Tool
 - Standards
 - Model Lessons
 - Assessment Item Specifications
 - Vetted Resources
- Digital Interim Assessment Item Banks
- Digital Formative Assessments in Math and Reading
- Teacher Professional Development Tools
- Online STEM Student Program for Gifted and Talented
- Web-based Student Tutorial

District Preparedness

- Broward has all its adopted textbooks available in digital form on the Broward Education Enterprise Portal (BEEP)
 - 20 elementary etextbooks and 38 secondary etextbooks are also available and accessible at home
- Citrus – all high school students are allowed to bring their personal notebook computers – no wireless yet, but can access materials at home
- Miami-Dade – new high school, iPrep is fully digital – Mac Books provided by the district
- Marion – Secondary students are allowed to bring laptops and join the student wireless network

District Preparedness

- Orange – one third grade classroom uses netbooks exclusively
- Pinellas – Clearwater HS working toward all digital (currently math and English content)
- Sarasota – all math content available digitally
- Seminole – Crooms Academy of Information Technology has one-to-one laptops

District Preparedness

***Ensuring that our schools are ready for
computerized testing***

- 3-Phase Computer-Based Assessments Certification Process
 - Phase I: Initial Certification through a web-based tool
 - Phase II: Infrastructure Trial
 - Phase III: Final Certification
- We will adapt and replicate for district digital instruction readiness

3-Phase District Preparedness for Digital Instruction

Phase I: Initial Analysis of District Readiness

- Establish workgroup consisting of technology company representatives and district practitioners
- Determine the requirements for Digital Instruction
- Assess the schools network, hardware, software, and staffing needs (Surveys)
- Workgroup assessment of survey information
- Workgroup provides a 3-year plan to address any deficiencies

3-Phase District Preparedness for Digital Instruction

Phase II: Build Digital Instruction Infrastructure

- Provide technical assistance and professional development to districts
 - Repurpose Master Digital Educators
- Standardize on types of digital reading devices which meet the multi-functional needs of the schools to help maximize purchasing power
- Districts purchase technology hardware needed to support student access to digital content

3-Phase District Preparedness for Digital Instruction

Phase III: Test Digital Instruction Infrastructure

- Utilize the Instructional Materials Workgroup to build testing scenarios
- Build online survey tool for schools to report test outcomes
- Work with schools to address any deficiencies

Recommendations

Wise Investments

- Purchase technology that supports access to all the following:
 - digital curriculum content
 - web-based content
 - statewide electronic assessment
- Contracts include upgrades and support
- All new facilities built eReady

Five-year Timeline for Moving Florida's Instruction Materials to the Digital World

Legislation and Adoption Cycle	2010-2011	2011-2012	2012-2013	2013-2014	2014-2015
Legislation	<ol style="list-style-type: none"> 1. Publishers provide separate digital content that is created specifically for digital delivery and not simple content in a pdf file 2. Publisher provides electronic content for adoption review 3. Districts are allowed to use appropriated funds to purchase technology hardware to support instruction if all instructional purchases and requirements have been met 	<ol style="list-style-type: none"> 4. <u>Redefine the adoption cycle based on updated standards and instructional materials needs</u> 5. <u>Entire review process for content to be proposed for Florida's adoption list is completed digitally</u> 6. <u>Post secondary experts in content areas review digital content submitted for adoption and provide feedback to the Commissioner through a digital review system</u> 7. <u>Teachers review expert recommended content digitally to ensure usability of digital content and provide feedback to the department through a digital review system</u> 8. <u>Districts are allowed to use appropriated funds to purchase technology hardware to support instruction if all instructional purchases and requirements have been met</u> 	<ol style="list-style-type: none"> 9. <u>By 2012-2013 each district school board shall use at least 50% of the annual allocation for the purchase of digital, electronic or web-based instructional materials.</u> 10. <u>Instructional materials adopted in 2012-2013 in grades 9-12 shall only be provided in an electronic format.</u> 	<ol style="list-style-type: none"> 11. <u>Beginning in the 2013-2014 school year, any instructional materials adopted for grades 5-12 shall be provided only in electronic format.</u> 	<ol style="list-style-type: none"> 12. <u>Beginning in the 2014-2015 school year, any instructional materials adopted for grades K-12 shall be provided only in electronic format</u>
Content Area Being Purchased	Mathematics	Science	Social Studies	Reading	Language Arts
Digital Assessment	Algebra I EOC, Grade 10 Math, and Grade 10 Math Retakes	Algebra 1, Geometry, Biology, and U.S. History EOCs; Grade 7 Reading, Grade 10 Math FCAT Retakes, and PERT	Algebra 1, Geometry, Biology, U.S. History, and Civics EOCs; Grades 7 and 10 Reading; Grade 7 Math, Grade 10 Math FCAT Retakes, and PERT	Algebra 1, Geometry, Biology, U.S. History, and Civics EOCs; Grades 5, 7 and 10 Reading; Grades 6 and 7 Math; Grade 10 Math FCAT Retakes, and PERT PARCC at sample schools – grades 3-11 ELA and Grades 3-8 Math and HS Math EOCs	Algebra 1, Geometry, Biology, U.S. History, and Civics EOCs; Grades 5, 7 and 10 Reading; Grades 6 and 7 Math; Grade 10 Math FCAT Retakes, and PERT PARCC – grades 3-11 ELA and Grades 3-8 Math and HS Math EOCs

Five-year Timeline for Moving Florida's Instruction Materials to the Digital World

State level digital resources already available to teachers:

- **Since 1999 FCAT Explorer** with digital tutorials for students and mini-standards assessments for teachers
- **Since 2009 CPALMS** – database for all standards that includes test specifications for each state-assessed benchmark and model lessons for mathematics and science
- **Since 2009 FAIR** – interim assessments in reading grades K-12
- **Since 2009 iTunes U** Web site – www.floridaitunesu.com

Future Projects

- **2010 – 2011 Social Studies Instructional Materials Specifications -Support for Digital Content and Interoperability**
Publishers are encouraged to provide instructional materials in the form of digital content [as permitted in Sections 1006.28(1), 1006.29(4), and 1006.40(4), Florida Statutes] that may be readily added to learning management systems and/or content management systems used by Florida public school districts. Digital based submissions should include high levels of interactivity and student engagement. **These submissions should include an electronic format that enables the user (teacher or student) to search for, gather, and organize specific standards-based instructional content by the Florida benchmark code. Furthermore, the submissions should include electronic interim standards-based assessment items that are coded by the Florida benchmarks.** Text only or .PDF versions of print-based submissions are not considered interactive digital content.
- **February 2011** - Illustrative Mathematics Project – Gate funded project to build digital items for all Common Core State Math Standards
- **March 2011 – Florida's Virtual Market Place** - Digital content available to school districts, schools, and teachers through Learning.com

Digital resources to be built with Florida's Race to the Top Funds by 2013-2014

- Student tutorial
- Formative assessments in mathematics and English language arts
- Interim assessments in reading, mathematics, science, social studies, and Spanish
- School district instructional improvement systems

Five-year Timeline for Moving Florida's Instruction Materials to the Digital World

Current	Proposed
<p>1. Publishers provide hardcopy samples of textbooks to committee members.</p> <p>2. Face- to-face committee meetings each fall to officially review materials</p> <ul style="list-style-type: none"> ○ Paper evaluations and ballots ○ Coordinated travel for committee members throughout the state <p>3. Committee of 10 or more members composed of:</p> <ul style="list-style-type: none"> ○ At least 50% certified classroom teachers in subject area ○ 2 lay persons ○ 2 supervisors of teachers ○ 1 district school board member <p>4. 6-year adoption cycle</p> <p>5. Districts are required to spend at least 50% of their instructional materials allocation on materials included on state-adopted list</p>	<p>1. Entire review process for content to be proposed for Florida's adoption list is completed digitally</p> <ul style="list-style-type: none"> ○ Publishers provide digital content for review ○ Review conducted electronically ○ Feedback provided electronically <p>2. Digital review system to review and provide feedback to the Commissioner</p> <p>3. Post secondary experts in content areas review digital content submitted for adoption and provide feedback through a digital review system</p> <ul style="list-style-type: none"> ○ Teachers review expert recommended content digitally to ensure usability of digital content and provide feedback to the department <p>4. Redefine the adoption cycle based on updated standards and instructional materials needs</p> <p>5. Districts are allowed to use appropriated funds to purchase technology hardware to support instruction if all instructional purchases and requirements have been met</p> <p>6. By 2012-2013 each district school board shall use at least 50% of the annual allocation for the purchase of digital, electronic or web-based instructional materials.</p> <p>7. Instructional materials adopted in 2012-2013 in grades 9-12 shall only be provided in an electronic format.</p> <p>8. Beginning in the 2013-2014 school year, any instructional materials adopted for grades 5-12 shall be provided only in electronic format.</p> <p>9. Beginning in the 2014-2015 school year, any instructional materials adopted for grades K-12 shall be provided only in electronic format</p>



Senate PK12 Education Appropriation Subcommittee Update on Race to the Top



February 15, 2011

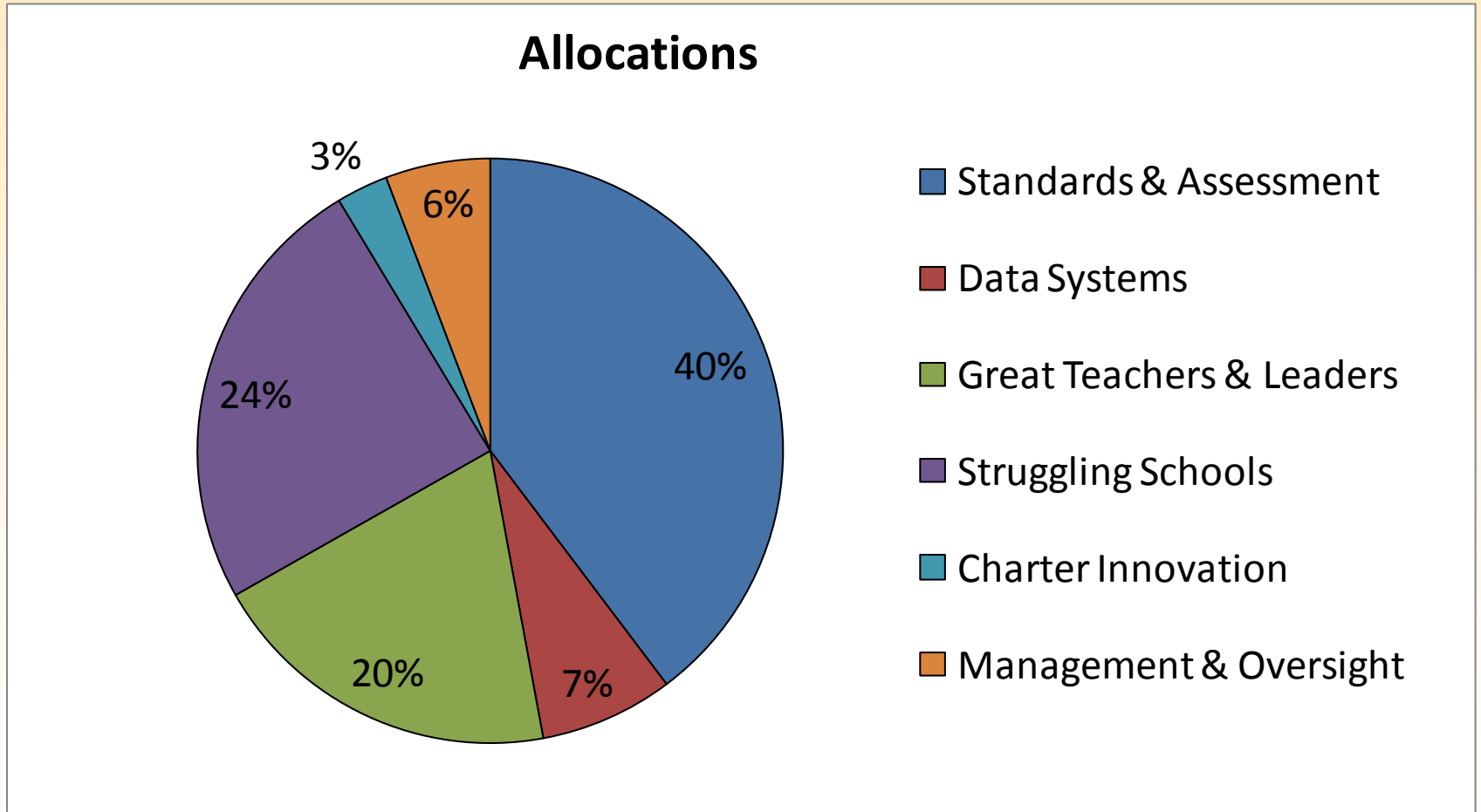
Florida's RTTT Budget

	2010-11	2011-12	2012-13	2013-14	Total
Standards and Assessments	\$39,611,083	\$53,734,376	\$52,929,924	\$52,980,126	\$199,255,509
Data Systems	\$19,694,202	\$25,354,897	\$14,971,555	\$13,265,253	\$73,285,907
Great Teachers and Leaders	\$28,947,658	\$75,920,605	\$72,254,233	\$84,889,556	\$262,012,051
Struggling Schools	\$19,045,410	\$28,245,964	\$29,904,378	\$28,368,748	\$105,564,499
Charter Schools	\$4,377,765	\$4,160,050	\$4,150,103	\$4,228,744	\$16,916,661
Project Management and Oversight	\$8,667,899	\$10,532,441	\$10,737,991	\$11,058,830	\$41,997,161
State Initiative Total	\$63,976,437	\$96,925,526	\$96,292,595	\$92,805,442	\$350,000,000
MOU Criteria Total (LEAs)	\$56,367,580	\$101,022,807	\$88,655,588	\$101,985,813	\$348,031,788*
Grand Total	\$120,344,017	\$197,948,333	\$184,948,183	\$194,791,255	\$698,031,788*

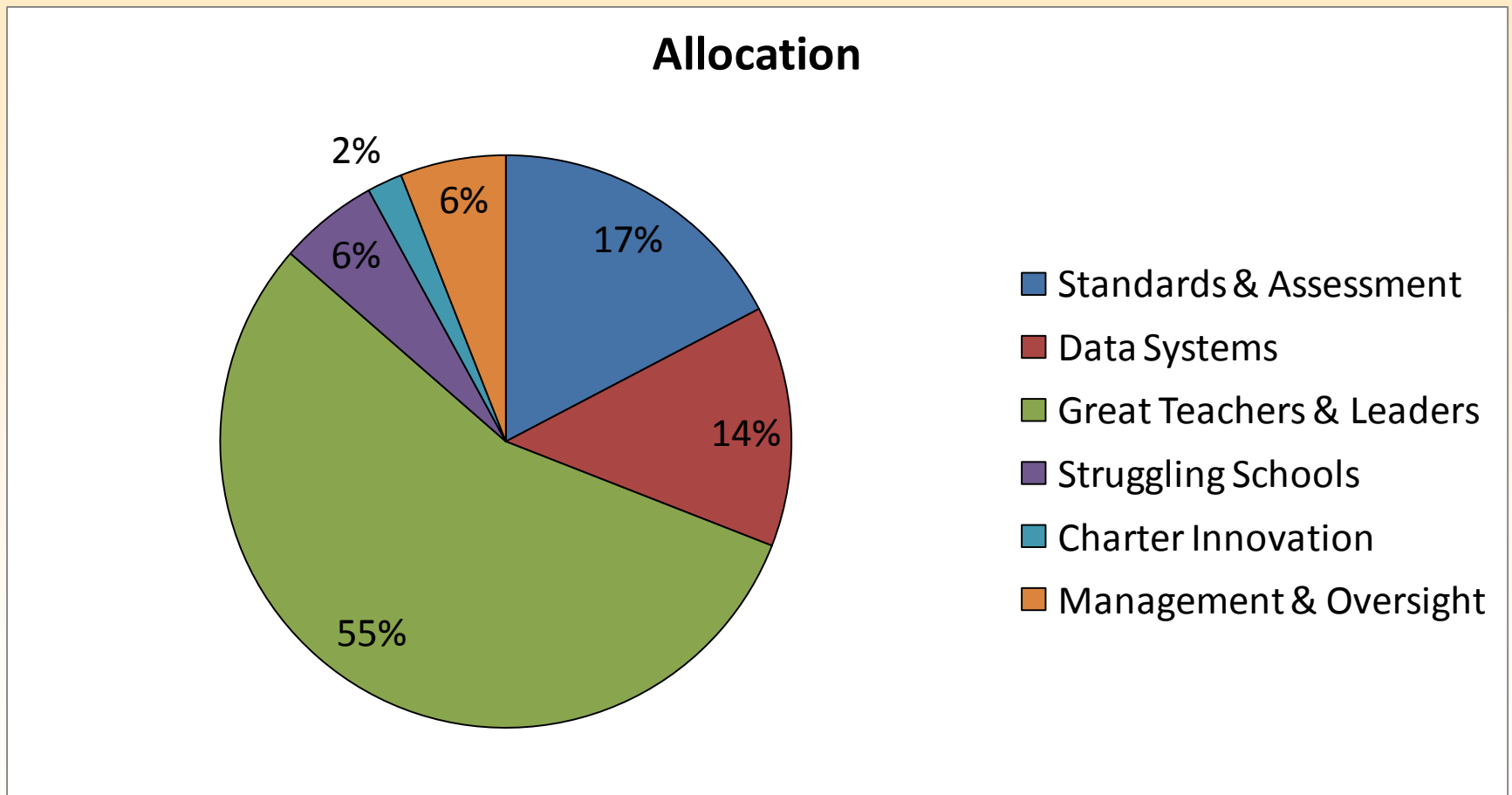
*Additional \$1,968,212 remains to be re-allocated to participating districts; funds available due to decision of several LEAs not to participate



State Initiatives by Assurance Area



District MOU Criteria by Assurance Area



Standards and Assessments

Initiative/MOU Criterion	Year 1	Year 2	Year 3	Year 4	Total
State Initiative: Curricular Tools to Implement the Common Core State Standards (include Common Core Standards into the Instructional Tool Database, secure technology to increase capacity, revise the standards tutorial)	\$8,619,000	\$9,500,000	\$11,500,000	\$17,000,000	\$46,619,000
State Initiative: Support for the Transition to High-Quality Assessments (develop formative assessments, acquire an interim assessment item bank and platform, develop assessments for “hard-to-measure” areas, conduct international assessment comparisons)	\$12,020,000	\$24,220,000	\$22,620,000	\$22,620,000	\$81,480,000
State Initiative: Increased Access to Science, Technology, Engineering, and Mathematics (STEM) Courses (partner with consortia to build and implement model high school STEM programs for gifted and talented students)	\$0	\$1,500,000	\$1,500,000	\$1,500,000	\$4,500,000
District MOU Criterion: Expand STEM Career and Technical Program Offerings (implement at least one additional high school career and technical program that provides training for occupations requiring STEM)	\$2,206,990	\$2,861,514	\$2,600,796	\$1,872,892	\$9,542,192



Standards and Assessments

Initiative/MOU Criterion	Year 1	Year 2	Year 3	Year 4	Total
District MOU Criterion: Increase Advanced STEM Coursework (increase the number of STEM-related acceleration courses, such as Advanced Placement, International Baccalaureate, AICE, dual enrollment and industry certification)	\$3,034,928	\$4,380,321	\$4,255,501	\$4,003,119	\$15,673,869
State Initiative: Classroom Support for Lesson Study (develop, pilot, and implement lesson study toolkits)	\$500,000	\$2,800,000	\$2,300,000	\$800,000	\$6,400,000
District MOU Criterion: Expand Lesson Study (for each persistently low-achieving school, modify schedules to provide a minimum of one lesson study per month for each grade level or subject area)	\$490,024	\$1,397,573	\$1,297,706	\$985,917	\$4,171,220
District MOU Criterion: Bolster Technology for Improved Instruction and Assessment (ensure that each school possesses the technology to provide sufficient access to strategic tools for improved classroom instruction and computer-based assessment)	\$12,740,141	\$7,074,968	\$6,855,921	\$4,198,198	\$30,869,228
Totals:					
State	\$21,139,000	\$38,020,000	\$37,920,000	\$41,920,000	\$138,999,000
District	\$18,472,083	\$15,714,376	\$15,009,924	\$11,060,126	\$60,256,509
Grand Total	\$39,611,083	\$53,734,376	\$52,929,924	\$52,980,126	\$199,255,509



Data Systems to Support Instruction

Initiative/MOU Criterion	Year 1	Year 2	Year 3	Year 4	Total
State Initiative: Accessing and Using State Data (create a user-friendly portal with single sign-on)	\$2,784,412	\$3,921,511	\$2,575,600	\$2,492,130	\$11,773,653
District MOU Criterion: Improve Access to State Data (integrate with the DOE to provide single sign-on access to state-level applications and data by their users)	\$2,614,055	\$3,929,761	\$2,500,101	\$2,428,568	\$11,472,485
State Initiative: Implement Local Systems (provide support to districts in acquiring, adopting, and using local instructional improvement systems)	\$61,000	\$5,020,000	\$20,000	\$20,000	\$5,121,000
District MOU Criterion: Use Data to Improve Instruction (use systems that are easy for students, teachers, parents, and principals to use and that show growth of students, teachers, schools, and districts disaggregated by subject and demographics)	\$10,662,474	\$10,738,598	\$8,056,827	\$6,510,944	\$35,968,843



Data Systems to Support Instruction

Initiative/MOU Criterion	Year 1	Year 2	Year 3	Year 4	Total
State Initiative: Provide Effective Professional Development to Teachers, Principals, and Administrators (hire and train Data Captain and Data Coaches for regions, as well as an Instructional Designer)	\$473,000	\$1,301,050	\$1,337,050	\$1,337,050	\$4,448,150
State Initiative: Establish a Data Implementation Committee (use district subject matter experts to provide input about the implementation of the data and technology initiatives)	\$56,210	\$18,200	\$16,200	\$11,200	\$101,810
State Initiative: Data and Technology Initiatives in Support of All Four Assurance Areas (update and expand the hardware and software capacity of the technology environment to handle increased demand, upgrade security, and obtain additional hardware and software support for the environment)	\$3,043,051	\$425,777	\$465,777	\$465,361	\$4,399,966
Totals:					
State	\$6,417,673	\$10,686,538	\$4,414,627	\$4,325,741	\$25,844,579
District	\$13,276,529	\$14,668,359	\$10,556,928	\$8,939,512	\$47,441,328
Grand Total	\$19,694,202	\$25,354,897	\$14,971,555	\$13,265,253	\$73,285,907



Great Teachers and Leaders

Initiative/MOU Criterion	Year 1	Year 2	Year 3	Year 4	Total
State Initiative: Improve Measurement of Academic Student Growth (contract with experts to establish measures of student performance and associated professional development)	\$1,400,000	\$1,200,000	\$1,850,000	\$1,350,000	\$5,800,000
State Initiative: Implement Evaluation Systems for Teachers and Principals that Measure Student Growth (contract for national expertise, training, and support to assist districts in revising teacher and principal evaluations based on core practices and baseline teacher effectiveness data)	\$2,131,552	\$1,065,776	\$1,065,776	\$532,888	\$4,795,992
District MOU Criterion: Improve Teacher and Principal Evaluation Systems (measure student growth, design and implement evaluation systems, and establish a timetable for implementing the teacher and principal evaluation systems)	\$9,686,900	\$11,635,858	\$12,873,626	\$14,061,335	\$48,257,719



Great Teachers and Leaders

Initiative/MOU Criterion	Year 1	Year 2	Year 3	Year 4	Total
State Initiative: Incorporate Evaluation Results Into Career Decisions (provide expert consultants to school districts to assist them in transitioning to a performance-based compensation method)	\$0	\$4,235,000	\$4,235,000	\$4,235,000	\$12,705,000
District MOU Criterion: Use Data Effectively in Human Capital Decisions (use results from teacher and principal evaluations to determine salary schedules, school staffing plans for schools with low income/high minority students, and performance pay)	\$1,428,243	\$34,782,940	\$25,940,608	\$42,888,909	\$105,040,700
State Initiative: Improve the Assignment of Effective Teachers and Principals to High-Need Schools (implement job-embedded teacher preparation programs, develop leadership programs in collaboration with postsecondary institutions, and recruit effective minority teachers)	\$3,800,000	\$6,042,000	\$10,000,000	\$5,800,000	\$25,642,000
State Initiative: Improve Access to Effective Teachers and Principals in Hard-to-Staff Subjects/Specialties (develop additional teacher preparation programs in STEM)	\$2,550,000	\$2,550,000	\$2,550,000	\$2,550,000	\$10,200,000



Great Teachers and Leaders

Initiative/MOU Criterion	Year 1	Year 2	Year 3	Year 4	Total
State Initiative: Improve Performance of Teacher and Principal Preparation Programs (enhance the Institution Program Evaluation Plan (eIPEP) system for collecting and reporting teacher preparation performance data)	\$480,000	\$480,000	\$330,000	\$330,000	\$1,620,000
District MOU Criterion: Provide Support for Educator Preparation Programs (improve support of candidates in teacher preparation programs through collaboration with providers in assigning effective mentors and supervising teachers and using candidate performance data for program improvements)	\$1,011,772	\$1,590,806	\$2,052,194	\$1,976,249	\$6,631,021
State Initiative: Provide Effective Support for Teachers and Principals (provide training and assistance to districts in evaluating professional development, develop school board training, and implement the Commissioner's Leadership Academy)	\$1,702,540	\$1,830,920	\$969,650	\$901,270	\$5,404,380
District MOU Criterion: Focus Effective Professional Development (implement a district professional development system that utilizes the state's protocol standards and measure effectiveness of professional development)	\$4,081,430	\$9,832,086	\$9,712,158	\$9,544,685	\$33,170,359



Great Teachers and Leaders

Initiative/MOU Criterion	Year 1	Year 2	Year 3	Year 4	Total
State Initiative: Establish a Community of Practitioners (facilitate semi-annual meetings for participating districts to share successful practices and products as well as implementation challenges and solutions)	\$175,220	\$175,220	\$175,220	\$219,220	\$744,880
State Initiative: Evaluate the Effectiveness of the Great Teachers and Leaders Assurance (contract with a national expert to review LEA practices and state-level initiatives)	\$500,000	\$500,000	\$500,000	\$500,000	\$2,000,000
Totals:					
State					
District	\$12,739,312	\$18,078,916	\$21,675,646	\$16,418,378	\$68,912,252
Grand Total	\$16,208,346	\$57,841,689	\$50,578,587	\$68,471,178	\$193,099,799
	\$28,947,658	\$75,920,605	\$72,254,233	\$84,889,556	\$262,012,051



Turning Around the Lowest-Achieving Schools

Initiative/MOU Criterion	Year 1	Year 2	Year 3	Year 4	Total
State Initiative: Expand Recruitment of Promising Teachers through External Partnerships (partner with an organization that recruits and trains promising teachers and has a track record of improving student achievement through innovative recruitment and training strategies)	\$0	\$3,000,000	\$3,000,000	\$3,000,000	\$9,000,000
State Initiative: Leadership Pipeline for Turnaround Principals and Assistant Principals (contract with an external partner to develop and implement a principal and assistant principal preparation program)	\$0	\$2,000,000	\$2,000,000	\$2,000,000	\$6,000,000
State Initiative: Build Capacity for Turnaround in Rural Districts (partner with an external provider to help build district leaders; capacity to support low-performing schools in rural districts)	\$0	\$750,000	\$750,000	\$0	\$1,500,000
State Initiative: Conduct Summer Differentiated Accountability Academies (provide summer professional development to coaches, department chairs, and lead teachers from persistently lowest-achieving schools and their feeder patterns)	\$2,000,000	\$2,000,000	\$2,000,000	\$2,000,000	\$8,000,000



Turning Around the Lowest-Achieving Schools

Initiative/MOU Criterion	Year 1	Year 2	Year 3	Year 4	Total
State Initiative: Charter School Partnership (partner with one or more state or national charter school funding organizations with a track record of supporting successful charter school operators in high-need neighborhoods to open new charter schools and/or take over existing schools in high-need neighborhoods throughout the state)	\$1,000,000	\$4,000,000	\$8,000,000	\$7,000,000	\$20,000,000
State Initiative: Improve and Expand STEM Career and Professional Academies (provide Career and Technical (CTE) experts to work with regional teams and additional funding to districts and schools to implement new CTE programs)	\$5,198,600	\$2,969,300	\$1,111,550	\$720,550	\$10,000,000
State Initiative: Reading Coordinators (provide 40 reading coordinators in regions to serve persistently lowest-achieving schools and their feeder patterns)	\$3,125,000	\$3,125,000	\$3,125,000	\$3,125,000	\$12,500,000
State Initiative: STEM Coordinators (provide 20 STEM coordinators in regions to serve persistently lowest-achieving schools and their feeder patterns)	\$1,750,000	\$1,750,000	\$1,750,000	\$1,750,000	\$7,000,000



Turning Around the Lowest-Achieving Schools

Initiative/MOU Criterion	Year 1	Year 2	Year 3	Year 4	Total
State Initiative: Community Compact (establish partnerships between schools, families, and communities that will enhance family literacy, expand parent academies, and engage the business community to increase volunteers, mentors, internships, and shadowing)	\$3,000,000	\$3,000,000	\$3,000,000	\$3,000,000	\$12,000,000
District MOU Criterion: Drive Improvement in Persistently Low-Achieving Schools (select and implement one of the four school intervention models for each of the persistently lowest-achieving schools)	\$432,704	\$1,492,190	\$1,454,343	\$1,781,479	\$5,160,716
District MOU Criterion: Implement Proven Programs for School Improvement (implement one or more designated strategies in each persistently lowest achieving school and its feeder pattern)	\$2,539,106	\$4,159,474	\$3,713,485	\$3,991,719	\$14,403,783
Totals:					
State	\$16,073,600	\$22,594,300	\$24,736,550	\$22,595,550	\$86,000,000
District	\$2,971,810	\$5,651,664	\$5,167,828	\$5,773,198	\$19,564,499
Grand Total	\$19,045,410	\$28,245,964	\$29,904,378	\$28,368,748	\$105,564,499



Charter School Innovations

Initiative/MOU Criterion	Year 1	Year 2	Year 3	Year 4	Total
State Initiative: Charter School Innovations (funding to allow charter schools or other related entities to submit proposals for funding to meet the unique needs of charter school students in ways that align with one or more of the assurances)	\$2,500,000	\$2,500,000	\$2,500,000	\$2,500,000	\$10,000,000
District MOU Criterion: Include Charter Schools In LEA Planning (offer charter schools the opportunity to participate and ensure that participating charter schools receive a commensurate share of grant funds and services)	\$1,877,765	\$1,660,050	\$1,650,103	\$1,728,744	\$6,916,661
Totals: State District Grand Total	\$2,500,000 \$1,877,765 \$4,377,765	\$2,500,000 \$1,660,050 \$4,160,050	\$2,500,000 \$1,650,103 \$4,150,103	\$2,500,000 \$1,728,744 \$4,228,744	\$10,000,000 \$6,916,661 \$16,916,661



Project Management and Oversight

Initiative/MOU Criterion	Year 1	Year 2	Year 3	Year 4	Total
State Management and Oversight (includes project management and evaluation, personnel, expenses such as travel costs and materials and supplies, and applicable indirect cost)	\$5,106,852	\$5,045,772	\$5,045,772	\$5,045,773	\$20,244,169
District Management and Oversight (includes project management personnel, expenses such as travel costs and materials and supplies, and applicable indirect cost)	\$3,561,047	\$5,486,669	\$5,692,219	\$6,013,057	\$20,752,992
Totals:					
State	\$5,106,852	\$5,045,772	\$5,045,772	\$5,045,773	\$20,244,169
District	\$3,561,047	\$5,486,669	\$5,692,219	\$6,013,057	\$20,752,992
Grand Total	\$8,667,899	\$10,532,441	\$10,737,991	\$11,058,830	\$40,997,161



Florida Department of Education
Race to the Top
Status of Procurements by Assurance Area

Assurance Area/ Project #	Project Name	Amount	Status of Procurement (Request for Quotes (RFQ), Invitation to Negotiate (ITN), Contract, or Grant)
A	DOE Project Management and Oversight		
A.1.1	Project Management		RFQ 2011-05 ; Responses due 2/18/11
A.1.2	Project Formative and Summative Evaluations	\$ 5,200,000	
Contracted Services SubTotal		\$ 5,200,000	
Personnel, Travel, Supplies, Other, and Indirect Costs SubTotal		\$ 15,044,169	
	DOE Project Management and Oversight Total	\$ 20,244,169	

Florida Department of Education
Race to the Top
Status of Procurements by Assurance Area

Assurance Area/ Project #	Project Name	Amount	Status of Procurement (Request for Quotes (RFQ), Invitation to Negotiate (ITN), Contract, or Grant)
B	Standards and Assessments		
B.2.1	Adopt Common Core State Standards (CCSS) and Create Standards Tools	\$ 5,500,000	Pending RTTT Amendment
B.2.2	Instructional Technology Specialists and Technology to Increase Capacity of Statewide System	\$ 7,000,000	
B.2.3	Textbook Demand Study of Materials in high School and Entry Postsecondary Courses	\$ 75,000	
B.2.4	Revise Standards Tutorial, including development of grade level/content area modules (Year 1 - Algebra, Geometry & 10th Grade Reading; Year 2 - Grades 3-5 Reading and Mathematics; Year 3 - Grades 6-8 Reading and Mathematics; Year 4 - Completion of all Grade Levels and Content Areas)	\$ 24,000,000	ITN 2011-18; Responses due 1/10/11; Evaluation Committee meeting held 1/18/11; Negotiations pending
B.2.5	Develop Highly-Effective Teacher Materials Report	\$ 44,000	
B.2.6	Support Statewide Professional Development in all LEAs and State Preservice Programs on Resources Available	\$ 8,000,000	
B.2.7	School-level Training Materials and Tutorials for Teachers on Accessing Resources and Assessments	\$ 2,000,000	
B.3.1	Develop Interim Assessments	\$ 41,800,000	ITN 2011-38; In development
B.3.2	Develop Reading Interim Assessments	\$ 1,500,000	Pending RTTT Amendment
B.3.3	Develop Common Core Reading Formative Assessment System	\$ 12,000,000	
B.3.4	Develop Common Core Mathematics Formative Assessment System	\$ 2,000,000	Pending RTTT Amendment
B.3.5	Content Experts	\$ 1,280,000	Grant issued to Tallahassee Community College for five content experts
B.3.6	Design and Develop assessments in "Hard-to-Measure" Areas	\$ 21,000,000	
B.3.7	Participate in PISA, PIRLS, and TIMSS Studies	\$ 1,900,000	Contract with Westat 12/6/10
B.4.1	Model High School Student STEM Programs of Study for Gifted and Talented Students	\$ 4,500,000	
B.5.1	Common Core Formative Assessment Lesson Study Toolkits	\$ 4,000,000	
B.5.2	Common Core Assessment/Use of Data and Lesson Study Toolkits	\$ 2,400,000	
Standards and Assessments Contracted Services SubTotal		\$ 138,999,000	
Standards and Assessments Personnel, Travel, Supplies, Other, and Indirect Costs SubTotal		\$0	
Standards and Assessments Total		\$ 138,999,000	

Florida Department of Education
Race to the Top
Status of Procurements by Assurance Area

Assurance Area/ Project #	Project Name	Amount	Status of Procurement (Request for Quotes (RFQ), Invitation to Negotiate (ITN), Contract, or Grant)
C	Data Systems		
C.6.1	Develop the Web-based Portal with Single Sign-on	\$ 11,429,211	
C.7.1	Local Systems Exchange	\$ 45,000	
C.7.2	Monitoring and Maintenance of Local Systems Exchange Resources	\$ 60,000	
C.7.3	Needs-based Grants to Small/Rural LEAs for Initial Purchase, Installation, and Training Costs	\$ 5,000,000	
C.8.1	Data Captain and Data Coaches	\$ 3,010,150	Grants to issued to Regional Differentiated Accountability Projects for one Data Captain and eight Data Coaches
C.8.2	Multi-media Professional Development on Accessing and Using Data	\$ 975,000	
C.10.1	Update and Expand the Hardware and Software Capacity of the Technology Environment to Handle the Increased Demand To and Use of Data and Software	\$ 1,329,196	
Data Systems Contracted Services SubTotal		\$ 21,848,557	
Data Systems, Travel, Supplies, Stipends, Equipment, and Other Costs SubTotal		\$ 3,996,022	
Data Systems Total		\$ 25,844,579	

Florida Department of Education
Race to the Top
Status of Procurements by Assurance Area

Assurance Area/ Project #	Project Name	Amount	Status of Procurement (Request for Quotes (RFQ), Invitation to Negotiate (ITN), Contract, or Grant)
D	Great Teachers and Leaders		
D.11.1	Statewide Measures for Student Performance at the Teacher Level	\$ 4,550,000	ITN 2011-01; Responses due 11/30/10; Evaluation Committee Meeting 12/10/10; Negotiations held 12/16 & 21/10; Posting of Award Pending
D.11.2	Develop Measures for Performance-Based Courses	\$ 600,000	
D.11.3	Integrate Student Growth Calculation into the Florida Education Data Warehouse	\$ 650,000	
D.12.1	National Expertise, Training, and Support to Assist Districts in Revising Evaluation Systems	\$ 4,795,992	ITN 2011-20: Responses due 1/5/11; Evaluation Committee Meeting 1/14/11; Negotiations to be held 1/24/11
D.13.1	Experts and support for the planning and implementation of the revised teacher evaluation system to participating LEAs	\$ 12,705,000	
D.14.1	Job-embedded Teacher Preparation and Principal Preparation Programs	\$ 24,442,000	
D.14.2	Recruitment Efforts for Minority Teachers	\$ 1,200,000	Pending RTTT Amendment
D.15.1	Develop/Implement Teacher Preparation Programs in STEM; Dual Major Programs in Mathematics, Science, and Education	\$ 10,200,000	
D.16.1	Enhance the state's electronic Institution Program Evaluation Plan (eIPEP) - an interactive portal for teacher preparation performance data collection and reporting	\$ 1,620,000	
D.17.1	Train Districts on Methods of Evaluating Professional Development and Lesson Study; Set Common Standards for Instructional Coaches	\$ 5,007,620	
D.17.2	Develop, Implement, and Evaluate Commissioner's Leadership Academy	\$ 396,760	
D.18.1	Community of Practitioners Meetings and Workgroups; Web Design for Posting of Products	\$ 744,880	
D.19.1	National Expert Review of LEA Practices and State-level Initiatives	\$ 2,000,000	
Great Teachers and Leaders Contracted Services SubTotal		\$ 68,912,252	
Personnel, Travel, Supplies, Equipment, Stipends, and Other Costs SubTotal		\$0	
Great Teachers and Leaders Total		\$ 68,912,252	

Florida Department of Education
Race to the Top
Status of Procurements by Assurance Area

Assurance Area/ Project #	Project Name	Amount	Status of Procurement (Request for Quotes (RFQ), Invitation to Negotiate (ITN), Contract, or Grant)
E	Struggling Schools		
E.20.1	Recruit and Train Teachers for Miami-Dade and Duval Counties (two LEAs with Nine or More Persistently Low-Achieving Schools)	\$ 9,000,000	ITN 2011-17: Addendum issued 1/5/11; Responses due 1/28/11
E.21.1	Develop Successful Principals and Assistant Principals for Low-achieving High Schools and their Feeder Patterns	\$ 6,000,000	ITN 2011-40: In development
E.22.1	Build LEA Leaders' Capacity to Support Low-performing Schools in Ten Rural LEAs	\$ 1,500,000	
E.23.1	Differentiated Accountability Summer Academy	\$ 8,000,000	
E.24.1	Charter School Partnership/Expansion	\$ 20,000,000	ITN 2011-16: Responses due 2/2/11
E.25.1	Review and Expand Current Career Technical Education (CTE) Programs in the 24 Persistently Lowest-Achieving High Schools	\$ 10,000,000	Grants issued to Regional Differentiated Accountability Projects for five Career and Technical Education (CTE) experts; Grants to 14 districts for expansion of CTE programs in development
E.26.1	Reading Coordinators to Assist Persistently Lowest-Achieving Schools and Their Feeder Patterns (Assigned to Regional Teams)	\$ 12,500,000	Grants issued to Regional Differentiated Accountability Projects for 40 Reading Coordinators
E.27.1	Science, Technology, Engineering, and Mathematics (STEM) Coordinators Assist Persistently Lowest-Achieving Schools and Their Feeder Patterns (Assigned to Regional Teams)	\$ 7,000,000	Grants issued to Regional Differentiated Accountability Projects for 20 STEM Coordinators
E.28.1	Community Compact in Selected LEA with at Least One Persistently Lowest-Achieving High School	\$ 12,000,000	ITN 2011-24; Responses due 3/3/11
Struggling Schools Contracted Services SubTotal		\$ 86,000,000	
Personnel, Travel, Supplies, Equipment, Stipends, and Other Costs Subtotal		\$0	
Struggling Schools Total		\$ 86,000,000	

Florida Department of Education
Race to the Top
Status of Procurements by Assurance Area

Assurance Area/ Project #	Project Name	Amount	Status of Procurement (Request for Quotes (RFQ), Invitation to Negotiate (ITN), Contract, or Grant)
F			
F.29.1	Proposals to Meet the Unique Needs of Charter School Students	\$ 10,000,000	
Charter Schools Contracted Services SubTotal		\$ 10,000,000	
Personnel, Travel, Supplies, Equipment, Stipends, and Other Costs Subtotal		\$0	
Charter Schools Total		\$ 10,000,000	

DRAFT

DRAFT

1 A bill to be entitled
2 An act relating to ; providing an effective date.

3
4 Be It Enacted by the Legislature of the State of Florida:

5
6 Section 1. Subsections (14) and (15) of section 1003.01,
7 Florida Statutes, are amended to read:

8 1003.01 Definitions.—As used in this chapter, the term:

9 (14) "Core-curricula courses" means:

10 (a) Language arts/reading, mathematics and science in
11 prekindergarten through grade 3,

12 (b) Courses in grades 4 through 8 in subjects that are
13 measured by state assessment at any grade level,

14 (c) Courses in grades 9 through 12 in subjects that are
15 measured by state assessment at any grade level,

16 (d) Courses that are specifically identified by name in
17 statute as required for high school graduation that are not
18 measured by state assessment, excluding any extracurricular
19 courses.

20 (e) Exceptional student education courses, and

21 (f) English for Speakers of Other Languages courses.

22
23 The maximum number of students assigned to a core-curricula high
24 school course in which a student in grades 4 through 8 is
25 enrolled shall be governed by the requirements of s. 1003.03 (1)

26 (c). ~~courses defined by the Department of Education as~~
27 ~~mathematics, language arts/reading, science, social studies,~~
28 ~~foreign language, English for Speakers of Other Languages,~~
29 ~~exceptional student education, and courses taught in traditional~~

DRAFT

DRAFT

30 ~~self-contained elementary school classrooms.~~

31
32 The term is limited in meaning and used for the sole purpose of
33 designating classes that are subject to the maximum class size
34 requirements established in s. 1, Art. IX of the State
35 Constitution. This term does not include courses offered under
36 ss. 1002.37, 1002.415, and 1002.45.

37 (15) "Extracurricular courses" means all courses that are
38 not defined as "core-curricula courses" which may include, but
39 are not limited to, physical education, fine arts, performing
40 arts, and career education, and courses that may result in
41 college credit. The term is limited in meaning and used for the
42 sole purpose of designating classes that are not subject to the
43 maximum class size requirements established in s. 1, Art. IX of
44 the State Constitution.

45 Section 2. Paragraph (a) of subsection (2) of section
46 1003.03, Florida Statutes, is amended to read:

47 1003.03 Maximum class size.—

48 (2) IMPLEMENTATION.—

49 (a) The Department of Education shall annually calculate
50 class size measures described in subsection (1) based upon the
51 October student membership survey. Students who enroll in a
52 school after the October student membership survey may be
53 assigned to existing classes that may temporarily exceed the
54 maximums if the school board adopts a plan to ensure that by the
55 beginning of the following school year the students are assigned
56 to classes that are in compliance with the requirements of
57 subsection (1).

58 Section 3. This act shall take effect July 1, 2011.

2010-11 SCHOOL DISTRICT MILLAGE DATA

Funds included in FEFP
Equalized/Compressed

District	FEFP Equalized		FEFP Compressed		Voted Add'l Operating 4 years	Discretionary Local Cap. Impr.	Discretionary Capital Outlay	Critical Capital Outlay	Total Millage Subject to 10 Mill Cap	Voted Debt Service	Voted Not to Exceed 2 years	Total Millage	2010 School Taxable Values
	RLE ¹	RLE Prior Period	Discretionary Operating	Critical Operating									
	-1-	-2-	-3-	-4-	-5-	-6-	-7-	-8-	-9-	-10-	-11-	-12-	-13-
1 Alachua	5.4650	0.0190	0.7480	0.2500	1.0000	1.2500	0.0000	0.0000	8.7320	0.3750	0.0000	9.1070	13,187,471,444
2 Baker	5.2840	0.0000	0.7480	0.2500	0.0000	1.5000	0.0000	0.0000	7.7820	0.0000	0.0000	7.7820	890,611,198
3 Bay	5.3970	0.0850	0.7480	0.2500	0.0000	0.9230	0.0000	0.0000	7.4030	0.0000	0.0000	7.4030	16,444,217,741
4 Bradford	5.4240	0.0000	0.7480	0.2500	0.0000	1.2500	0.0000	0.0000	7.6720	0.0000	0.0000	7.6720	938,510,520
5 Brevard	5.1120	0.0430	0.7480	0.2500	0.0000	1.5000	0.0000	0.0000	7.6530	0.0000	0.0000	7.6530	32,479,172,797
6 Broward	5.1040	0.0290	0.7480	0.2500	0.0000	1.5000	0.0000	0.0000	7.6310	0.0000	0.0000	7.6310	139,194,767,936
7 Calhoun	5.4650	0.0200	0.7480	0.2500	0.0000	1.0500	0.0000	0.0000	7.5330	0.0000	0.0000	7.5330	407,522,656
8 Charlotte	5.2170	0.1260	0.7480	0.2500	0.0000	1.5000	0.0000	0.0000	7.8410	0.0000	0.0000	7.8410	14,635,443,420
9 Citrus	5.3190	0.0230	0.7480	0.0000	0.0000	1.5000	0.0000	0.2500	7.8400	0.0000	0.0000	7.8400	10,414,224,453
10 Clay	5.3510	0.0180	0.7480	0.2500	0.0000	1.5000	0.0000	0.0000	7.8670	0.0000	0.0000	7.8670	9,763,332,245
11 Collier	3.4280	0.0230	0.7480	0.0000	0.2500	1.2500	0.0000	0.0000	5.6990	0.0000	0.0000	5.6990	63,945,875,853
12 Columbia	5.4140	0.0000	0.7480	0.2500	0.0000	1.5000	0.0000	0.0000	7.9120	0.0000	0.0000	7.9120	2,711,871,211
13 Dade	5.4170	0.1990	0.6980	0.0000	0.0000	1.5000	0.0500	0.0000	7.8640	0.3850	0.0000	8.2490	204,460,619,460
14 Desoto	5.0630	0.1400	0.7480	0.2500	0.0000	1.5000	0.0000	0.0000	7.7010	0.0000	0.0000	7.7010	1,524,191,705
15 Dixie	5.2910	0.0180	0.7480	0.2500	0.0000	1.5000	0.0000	0.0000	7.8070	0.0000	0.0000	7.8070	546,905,615
16 Duval	5.3460	0.0000	0.7480	0.2500	0.0000	1.5000	0.0000	0.0000	7.8440	0.0000	0.0000	7.8440	59,145,122,443
17 Escambia	5.5850	0.0460	0.7480	0.2500	0.0000	1.2310	0.0000	0.0000	7.8600	0.0000	0.0000	7.8600	15,170,351,227
18 Flagler	5.4460	0.0690	0.7480	0.2500	0.0000	1.5000	0.0000	0.0000	8.0130	0.0000	0.0000	8.0130	8,474,044,227
19 Franklin	2.6930	0.0410	0.7480	0.2500	0.5000	1.0246	0.0000	0.0000	5.2566	0.0000	0.0000	5.2566	2,123,157,751
20 Gadsden	5.5330	0.0440	0.7480	0.2500	0.0000	1.5000	0.0000	0.0000	8.0750	0.0000	0.0000	8.0750	1,510,065,583
21 Gilchrist	5.4640	0.0250	0.7480	0.2500	0.0000	1.5000	0.0000	0.0000	7.9870	0.0000	0.0000	7.9870	700,994,743
22 Glades	5.1200	0.0530	0.7480	0.2500	1.0000	0.7500	0.0000	0.0000	7.9210	0.0000	0.0000	7.9210	629,284,402
23 Gulf	5.0720	0.0690	0.7480	0.0000	1.0000	0.3500	0.0000	0.0000	7.2390	0.0000	0.0000	7.2390	1,623,948,803
24 Hamilton	5.4080	0.0000	0.7480	0.2500	0.0000	1.5000	0.0000	0.0000	7.9060	0.0000	0.0000	7.9060	738,446,272
25 Hardee	5.3290	0.0180	0.7480	0.2500	1.0000	0.5000	0.0000	0.0000	7.8450	0.0000	0.0000	7.8450	1,606,485,737
26 Hendry	5.6290	0.0560	0.7480	0.0000	0.7500	0.7500	0.0000	0.0000	7.9330	0.0000	0.0000	7.9330	1,892,333,295
27 Hernando	5.1480	0.0210	0.7480	0.0000	0.0000	1.5000	0.0000	0.0000	7.4170	0.0000	0.0000	7.4170	9,377,651,044
28 Highlands	5.1180	0.0000	0.7480	0.2500	0.0000	1.5000	0.0000	0.0000	7.6160	0.0000	0.0000	7.6160	5,314,161,878
29 Hillsborough	5.3440	0.0000	0.7480	0.0000	0.0000	1.5000	0.0000	0.0000	7.5920	0.0000	0.0000	7.5920	70,467,696,301
30 Holmes	5.4720	0.0150	0.7480	0.2500	0.0000	0.0000	0.0000	0.0000	6.4850	0.0000	0.0000	6.4850	470,882,389
31 Indian River	5.3860	0.0360	0.7480	0.2500	0.0000	1.5000	0.0000	0.0000	7.9200	0.3300	0.0000	8.2500	14,998,024,735
32 Jackson	5.4630	0.0000	0.7480	0.2500	0.0000	0.0000	0.0000	0.0000	6.4610	0.0000	0.0000	6.4610	1,595,246,117
33 Jefferson	5.2200	0.0880	0.7480	0.2500	0.0000	1.5000	0.0000	0.0000	7.8060	0.0000	0.0000	7.8060	596,002,410
34 Lafayette	5.3970	0.0000	0.7480	0.2500	0.0000	1.5000	0.0000	0.0000	7.8950	0.0000	0.0000	7.8950	239,738,329
35 Lake	5.2740	0.0010	0.7480	0.0000	0.0000	1.5000	0.0000	0.0000	7.5230	0.0000	0.0000	7.5230	18,847,869,299
36 Lee	5.7310	0.0360	0.7480	0.2500	0.0000	1.2500	0.0000	0.0000	8.0150	0.0000	0.0000	8.0150	58,980,654,259
37 Leon	5.5030	0.0330	0.7480	0.2500	0.0000	1.5000	0.0000	0.0000	8.0340	0.0000	0.0000	8.0340	15,737,485,425
38 Levy	5.1300	0.0250	0.7480	0.2500	0.0000	1.5000	0.0000	0.0000	7.6530	0.0000	0.0000	7.6530	2,056,828,088
39 Liberty	5.5470	0.0700	0.7480	0.2500	0.0000	1.5000	0.0000	0.0000	8.1150	0.0000	0.0000	8.1150	261,669,570
40 Madison	5.4850	0.0280	0.7480	0.2500	0.0000	1.5000	0.0000	0.0000	8.0110	0.0000	0.0000	8.0110	665,427,204
41 Manatee	5.3430	0.0000	0.7480	0.2500	0.0000	1.2500	0.0000	0.0000	7.5910	0.0000	0.0000	7.5910	26,599,241,677
42 Marion	5.2390	0.0000	0.7480	0.0000	0.0000	1.5000	0.0000	0.0000	7.4870	0.0000	0.0000	7.4870	18,018,352,773
43 Martin	4.7080	0.0000	0.7480	0.0000	0.0000	1.5000	0.0000	0.0000	6.9560	0.0000	0.0000	6.9560	18,510,698,192
44 Monroe	1.9160	0.0280	0.7295	0.2500	0.5000	0.4000	0.0000	0.0000	3.8235	0.0000	0.0000	3.8235	20,293,826,976
45 Nassau	5.5460	0.0000	0.7480	0.2500	0.0000	1.2640	0.0000	0.0000	7.8080	0.0000	0.0000	7.8080	7,539,822,131
46 Okaloosa	5.2570	0.0290	0.7480	0.0000	0.0000	1.5000	0.0000	0.0000	7.5340	0.0000	0.0000	7.5340	15,559,221,771
47 Okeechobee	5.6230	0.0000	0.7480	0.2500	0.0000	1.5000	0.0000	0.0000	8.1210	0.0000	0.0000	8.1210	1,667,409,676
48 Orange	5.3370	0.0590	0.7480	0.2500	0.0000	1.5000	0.0000	0.0000	7.8940	0.0000	0.0000	7.8940	89,012,384,644
49 Osceola	5.1750	0.0420	0.7480	0.2500	0.0000	1.5000	0.0000	0.0000	7.7150	0.0000	0.0000	7.7150	19,238,835,969
50 Palm Beach	5.6030	0.0530	0.6780	0.2500	0.0000	1.5000	0.0700	0.0000	8.1540	0.0000	0.0000	8.1540	134,698,183,829
51 Pasco	5.2690	0.0000	0.7480	0.2500	0.0000	1.5000	0.0000	0.0000	7.7670	0.0000	0.0000	7.7670	22,963,002,249
52 Pinellas	5.3210	0.0210	0.7480	0.2500	0.5000	1.5000	0.0000	0.0000	8.3400	0.0000	0.0000	8.3400	63,254,148,064
53 Polk	5.2940	0.0000	0.7480	0.2500	0.0000	1.5000	0.0000	0.0000	7.7920	0.0000	0.0000	7.7920	28,429,603,200
54 Putnam	5.3630	0.0000	0.7480	0.2500	0.0000	1.5000	0.0000	0.0000	7.8610	0.0000	0.0000	7.8610	3,997,530,909
55 St. Johns	5.5710	0.0000	0.7480	0.2500	0.0000	1.5000	0.0000	0.0000	8.0690	0.0000	0.0000	8.0690	19,659,872,045
56 St. Lucie	5.5730	0.1060	0.7480	0.2500	0.0000	1.5000	0.0000	0.0000	8.1770	0.0000	0.0000	8.1770	16,712,045,010
57 Santa Rosa	5.5550	0.0230	0.7480	0.0000	0.0000	1.4000	0.0000	0.0000	7.7260	0.0000	0.0000	7.7260	8,537,191,917
58 Sarasota	4.6530	0.0000	0.7480	0.0000	1.0000	1.5000	0.0000	0.0000	7.9010	0.0000	0.0000	7.9010	44,700,480,106
59 Seminole	5.3390	0.0160	0.7480	0.2500	0.0000	1.4480	0.0000	0.0000	7.8010	0.0000	0.0000	7.8010	27,998,890,020
60 Sumter	4.9840	0.0250	0.7480	0.2500	0.0000	1.4920	0.0000	0.0000	7.4990	0.0000	0.0000	7.4990	6,855,632,983
61 Suwannee	5.4190	0.0000	0.7480	0.2500	0.0000	1.5000	0.0000	0.0000	7.9170	0.0000	0.0000	7.9170	1,596,409,725
62 Taylor	5.1410	0.0250	0.7480	0.2500	0.0000	1.5000	0.0000	0.0000	7.6640	0.0000	0.0000	7.6640	1,315,434,877
63 Union	5.4560	0.0510	0.7480	0.2500	0.0000	1.5000	0.0000	0.0000	8.0050	0.0000	0.0000	8.0050	257,336,619
64 Volusia	5.6980	0.0410	0.7480	0.2500	0.0000	1.5000	0.0000	0.0000	8.2370	0.0000	0.0000	8.2370	29,341,153,505
65 Wakulla	5.4470	0.1050	0.7480	0.2500	0.0000	1.5000	0.0000	0.0000	8.0500	0.4970	0.0000	8.5470	1,348,795,653
66 Walton	2.7100	0.0390	0.7480	0.0000	0.5000	1.0730	0.0000	0.0000	5.0700	0.0000	0.0000	5.0700	11,725,381,648
67 Washington	5.2860	0.0000	0.7480	0.2500	0.0000	1.5000	0.0000	0.0000	7.7840	0.0000	0.0000	7.7840	1,021,349,210
													1,445,620,545,163
Total out of 67	67	46	67	53	11	65	2	1	4	0			

1. State average Required Local Effort millage rate is 5.380 mills.

Funds included in FEFP
Equalized/Compressed

District	FEFP Equalized		FEFP Compressed		Voted Add'l Operating 4 years	Discretionary Local Cap. Impr.	Discretionary Capital Outlay	Critical Capital Outlay	Total Millage Subject to 10 Mill Cap	Voted Debt Service	Voted Not to Exceed 2 years	Total Revenue
	RLE ¹	RLE Prior Period	Discretionary Operating	Critical Operating								
1 Alachua	69,186,750	240,539	9,469,659	3,164,993	12,659,973	15,824,966	0	0	110,546,880	4,747,490	0	115,294,370
2 Baker	4,517,750	0	639,530	213,747	0	1,282,480	0	0	6,653,507	0	0	6,653,507
3 Bay	85,199,465	1,341,848	11,808,264	3,946,612	0	14,570,892	0	0	116,867,081	0	0	116,867,081
4 Bradford	4,886,862	0	673,926	225,243	0	1,126,213	0	0	6,912,244	0	0	6,912,244
5 Brevard	159,392,190	1,340,740	23,322,644	7,795,001	0	46,770,009	0	0	238,620,584	0	0	238,620,584
6 Broward	682,032,092	3,875,182	99,952,979	33,406,744	0	200,440,466	0	0	1,019,707,463	0	0	1,019,707,463
7 Calhoun	2,138,027	7,824	292,634	97,805	0	410,783	0	0	2,947,073	0	0	2,947,073
8 Charlotte	73,298,984	1,770,303	10,509,419	3,512,506	0	21,075,039	0	0	110,166,251	0	0	110,166,251
9 Citrus	53,177,529	229,946	7,478,246	0	0	14,996,483	0	2,499,414	78,381,618	0	0	78,381,618
10 Clay	50,153,847	168,710	7,010,854	2,343,200	0	14,059,198	0	0	73,735,809	0	0	73,735,809
11 Collier	210,438,204	1,411,925	45,918,255	0	15,347,010	76,735,051	0	0	349,850,445	0	0	349,850,445
12 Columbia	14,094,788	0	1,947,340	650,849	0	3,905,095	0	0	20,598,072	0	0	20,598,072
13 Dade	1,063,260,649	39,060,157	137,004,972	0	0	294,423,292	9,814,110	0	1,543,563,180	75,568,645	0	1,619,131,825
14 Desoto	7,408,303	204,851	1,094,492	365,806	0	2,194,836	0	0	11,268,288	0	0	11,268,288
15 Dixie	2,777,931	9,451	392,722	131,257	0	787,544	0	0	4,098,905	0	0	4,098,905
16 Duval	303,542,232	0	42,470,930	14,194,829	0	85,168,976	0	0	445,376,967	0	0	445,376,967
17 Escambia	81,337,355	669,923	10,893,526	3,640,884	0	17,927,714	0	0	114,469,402	0	0	114,469,402
18 Flagler	44,303,659	561,321	6,085,042	2,033,771	0	12,202,624	0	0	65,186,417	0	0	65,186,417
19 Franklin	5,488,957	83,567	1,524,597	509,558	1,019,116	2,088,372	0	0	10,714,167	0	0	10,714,167
20 Gadsden	8,020,985	63,785	1,084,348	362,416	0	2,174,494	0	0	11,706,028	0	0	11,706,028
21 Gilchrist	3,677,026	16,824	503,370	168,239	0	1,009,432	0	0	5,374,891	0	0	5,374,891
22 Glades	3,093,059	32,018	451,877	151,028	604,113	453,085	0	0	4,785,180	0	0	4,785,180
23 Gulf	7,907,202	107,570	1,166,125	0	1,558,991	545,647	0	0	11,285,535	0	0	11,285,535
24 Hamilton	3,833,777	0	530,263	177,227	0	1,063,363	0	0	5,604,630	0	0	5,604,630
25 Hardee	8,218,524	27,760	1,153,585	385,557	1,542,226	771,113	0	0	12,098,765	0	0	12,098,765
26 Hendry	10,225,866	101,732	1,358,847	0	1,362,480	1,362,480	0	0	14,411,405	0	0	14,411,405
27 Hernando	46,345,102	189,053	6,733,904	0	0	13,503,818	0	0	66,771,877	0	0	66,771,877
28 Highlands	26,109,965	0	3,815,993	1,275,399	0	7,652,393	0	0	38,853,750	0	0	38,853,750
29 Hillsborough	361,516,194	0	50,601,443	0	0	101,473,483	0	0	513,591,120	0	0	513,591,120
30 Holmes	2,473,602	6,781	338,131	113,012	0	0	0	0	2,931,526	0	0	2,931,526
31 Indian River	77,548,187	518,332	10,769,782	3,599,526	0	21,597,156	0	0	114,032,983	4,751,374	0	118,784,357
32 Jackson	8,366,236	0	1,145,514	382,859	0	0	0	0	9,894,609	0	0	9,894,609
33 Jefferson	2,986,687	50,350	427,977	143,041	0	858,243	0	0	4,466,298	0	0	4,466,298
34 Lafayette	1,242,113	0	172,151	57,537	0	345,223	0	0	1,817,024	0	0	1,817,024
35 Lake	95,427,516	18,094	13,534,278	0	0	27,140,932	0	0	136,120,820	0	0	136,120,820
36 Lee	324,497,404	2,038,371	42,352,828	14,155,357	0	70,776,785	0	0	453,820,745	0	0	453,820,745
37 Leon	83,139,247	498,564	11,300,774	3,776,997	0	22,661,979	0	0	121,377,561	0	0	121,377,561
38 Levy	10,129,467	49,364	1,476,967	493,639	0	2,961,832	0	0	15,111,269	0	0	15,111,269
39 Liberty	1,393,422	17,584	187,900	62,801	0	376,804	0	0	2,038,511	0	0	2,038,511
40 Madison	3,503,873	17,887	477,830	159,703	0	958,215	0	0	5,117,508	0	0	5,117,508
41 Manatee	136,434,958	0	19,100,383	6,383,818	0	31,919,090	0	0	193,838,249	0	0	193,838,249
42 Marion	90,622,224	0	12,938,619	0	0	25,946,428	0	0	129,507,271	0	0	129,507,271
43 Martin	83,662,432	0	13,292,162	0	0	26,655,405	0	0	123,609,999	0	0	123,609,999
44 Monroe	37,327,654	545,498	14,212,173	4,870,518	9,741,037	7,792,830	0	0	74,489,710	0	0	74,489,710
45 Nassau	40,143,219	0	5,414,195	1,809,557	0	9,149,122	0	0	56,516,093	0	0	56,516,093
46 Okaloosa	78,523,036	433,169	11,172,766	0	0	22,405,279	0	0	112,534,250	0	0	112,534,250
47 Okeechobee	9,000,811	0	1,197,334	400,178	0	2,401,070	0	0	12,999,393	0	0	12,999,393
48 Orange	456,056,733	5,041,661	63,918,013	21,362,972	0	128,177,834	0	0	674,557,213	0	0	674,557,213
49 Osceola	95,578,537	775,710	13,815,023	4,617,321	0	27,703,924	0	0	142,490,515	0	0	142,490,515
50 Palm Beach	724,525,367	6,853,444	87,672,354	32,327,564	0	193,965,385	9,051,718	0	1,054,395,832	0	0	1,054,395,832
51 Pasco	116,152,376	0	16,489,273	5,511,121	0	33,066,723	0	0	171,219,493	0	0	171,219,493
52 Pinellas	323,112,309	1,275,204	45,421,539	15,180,996	30,361,991	91,085,973	0	0	506,438,012	0	0	506,438,012
53 Polk	144,486,067	0	20,414,729	6,823,105	0	40,938,629	0	0	212,662,530	0	0	212,662,530
54 Putnam	20,581,208	0	2,870,547	959,407	0	5,756,445	0	0	30,167,607	0	0	30,167,607
55 St. Johns	105,144,141	0	14,117,361	4,718,369	0	28,310,216	0	0	152,290,087	0	0	152,290,087
56 St. Lucie	89,410,778	1,700,618	12,000,585	4,010,891	0	24,065,345	0	0	131,188,217	0	0	131,188,217
57 Santa Rosa	45,527,137	188,501	6,130,387	0	0	11,473,986	0	0	63,320,011	0	0	63,320,011
58 Sarasota	199,671,681	0	32,098,521	0	42,912,461	64,368,691	0	0	339,051,354	0	0	339,051,354
59 Seminole	143,506,631	430,063	20,105,443	6,719,734	0	38,920,697	0	0	209,682,568	0	0	209,682,568
60 Sumter	32,801,736	164,535	4,922,893	1,645,352	0	9,819,460	0	0	49,353,976	0	0	49,353,976
61 Suwannee	8,304,907	0	1,146,350	383,138	0	2,298,830	0	0	12,133,225	0	0	12,133,225
62 Taylor	6,492,145	31,570	944,587	315,704	0	1,894,226	0	0	9,678,232	0	0	9,678,232
63 Union	1,347,867	12,599	184,788	61,761	0	370,565	0	0	1,977,580	0	0	1,977,580
64 Volusia	160,498,457	1,154,868	21,069,296	7,041,877	0	42,251,261	0	0	232,015,759	0	0	232,015,759
65 Wakulla	7,053,014	135,959	968,543	323,711	0	1,942,266	0	0	10,423,493	643,537	0	11,067,030
66 Walton	30,504,753	438,998	8,419,762	0	5,628,183	12,078,081	0	0	57,069,777	0	0	57,069,777
67 Washington	5,182,898	0	733,410	245,124	0	1,470,743	0	0	7,632,175	0	0	7,632,175
Total	7,197,944,104	73,912,753	1,018,844,954	227,409,361	122,737,581	1,989,905,014	18,865,828	2,499,414	10,652,119,009	85,711,046	0	10,737,830,055

1. State average Required Local Effort millage rate is 5.380 mills.

Summary of the November election results for school board millage for the 67 school districts:

1. 28 districts had no ballot language.
2. 39 districts had ballot language.
3. Of the 39, **19 districts** had ballot language that **failed**.
4. Of the 39, **20 districts** had ballot language that was **approved**.
5. Of the 19 that failed, 16 failed for .25 critical operating, 1 for .25 critical capital, and 2 for 4-year voted.
6. Of the 20 that were approved, 16 were approved for .25 critical operating, 1 for .25 critical capital, and 3 for 4-year voted.
7. For 2010-11, 53 districts had super-majority critical operating .25 mills, one district had super-majority critical capital .25 mills.
8. For 2011-12, 16 districts will have critical operating .25 mills, *if the board approves with a super-majority vote*, and one district will have critical capital .25 mills, *if the board approves with a super-majority vote*.
9. For 2010-11, 11 districts had a voted 4-year millage for operations.
10. For 2011-12, an additional 3 districts will have a voted 4-year millage for operations.

District	Unreserved Fund Balance 6/30/2010 Combined General Fund, SFSF, and Ed Jobs	Projected Unreserved Fund Balance 6/30/2011 Combined General Fund, SFSF, and Ed Jobs	Projected Change in Unreserved Fund Balance Col 2 - Col 1	Ed Jobs Allocation	Financial Condition Ratio 6/30/2010 Combined General Fund, SFSF, and Ed Jobs	Projected Financial Condition Ratio 6/30/2011 Combined General Fund, SFSF, and Ed Jobs
	-1-	-2-	-3-	-4-	-5-	-6-
1 ALACHUA	20,346,277.75	25,517,411.02	5,171,133.27	5,497,254.00	9.66%	12.08%
2 BAKER	6,634,206.20	4,081,925.73	(2,552,280.47)	1,002,742.00	17.83%	10.70%
3 BAY	19,892,461.40	15,635,147.81	(4,257,313.59)	5,128,751.00	10.58%	8.37%
4 BRADFORD	2,207,788.41	1,972,073.00	(235,715.41)	627,217.00	8.68%	7.83%
5 BREVARD	49,257,947.59	51,952,631.00	2,694,683.41	14,791,730.00	9.63%	10.06%
6 BROWARD	59,732,486.38	65,504,181.70	5,771,695.32	55,723,473.00	3.19%	3.35%
7 CALHOUN	4,737,067.99	4,362,192.36	(374,875.63)	422,933.00	28.69%	26.06%
8 CHARLOTTE	13,879,204.65			3,330,284.00	10.74%	
9 CITRUS	15,393,648.95	17,255,039.43	1,861,390.48	3,075,112.00	13.10%	14.77%
10 CLAY	12,299,378.20	12,951,621.69	652,243.49	7,447,843.00	4.89%	5.06%
11 COLLIER	65,596,773.86	34,350,000.00	(31,246,773.86)	9,521,461.00	17.75%	9.13%
12 COLUMBIA	2,488,582.22	2,118,544.52	(370,037.70)	1,901,892.00	3.44%	3.00%
13 DADE	96,274,182.51	156,768,454.00	60,494,271.49	72,864,375.00	3.83%	5.94%
14 DESOTO	6,044,769.10	4,654,018.82	(1,390,750.28)	1,014,494.00	15.72%	12.19%
15 DIXIE	2,006,812.39			381,182.00	13.25%	
16 DUVAL	75,280,202.30	132,019,817.00	56,739,614.70	26,301,008.00	8.46%	14.48%
17 ESCAMBIA	32,916,644.30	24,288,089.53	(8,628,554.77)	7,958,015.00	11.30%	8.42%
18 FLAGLER	5,265,095.80	9,080,317.83	3,815,222.03	2,445,414.00	5.30%	9.16%
19 FRANKLIN	1,709,928.15	1,751,029.62	41,101.47	239,138.00	13.90%	15.40%
20 GADSDEN	2,557,058.98	2,273,866.00	(283,192.98)	1,121,363.00	5.72%	5.11%
21 GILCHRIST	1,915,762.18	4,262,913.56	2,347,151.38	513,030.00	9.42%	19.22%
22 GLADES	2,033,174.02	2,121,382.76	88,208.74	248,866.00	16.91%	16.55%
23 GULF	1,255,533.66	609,281.79	(646,251.87)	379,709.00	7.71%	3.81%
24 HAMILTON	927,914.83	451,168.00	(476,746.83)	343,547.00	6.62%	3.40%
25 HARDEE	7,753,258.97	8,782,967.70	1,029,708.73	1,023,096.00	20.49%	22.86%
26 HENDRY	5,193,044.00	4,770,813.00	(422,231.00)	1,409,191.00	10.23%	9.47%
27 HERNANDO	15,462,967.00	7,256,336.00	(8,206,631.00)	4,605,380.00	9.92%	4.59%
28 HIGHLANDS	5,101,770.17	4,866,300.37	(235,469.80)	2,404,153.00	5.90%	5.56%
29 HILLSBOROUGH	288,254,588.96	124,693,334.00	(163,561,254.96)	41,211,016.00	19.99%	8.82%
30 HOLMES	1,891,601.76	2,589,655.80	698,054.04	620,392.00	8.09%	10.90%
31 INDIAN RIVER	1,943,591.34	5,680,656.00	3,737,064.66	3,675,068.00	1.53%	4.28%
32 JACKSON	17,143,866.63	9,935,875.00	(7,207,991.63)	1,351,458.00	32.13%	18.68%
33 JEFFERSON	267,212.30	897,818.19	630,605.89	204,769.00	2.84%	9.77%
34 LAFAYETTE	1,154,479.02	769,023.50	(385,455.52)	191,263.00	14.16%	9.41%
35 LAKE	31,831,548.68	20,887,055.00	(10,944,493.68)	8,256,585.00	11.44%	7.26%
36 LEE	113,873,299.00	54,065,010.00	(59,808,289.00)	17,363,509.00	18.48%	8.20%
37 LEON	26,955,459.25	12,887,875.00	(14,067,584.25)	6,715,301.00	10.97%	5.25%
38 LEVY	2,230,661.55	1,904,903.00	(325,758.55)	1,101,290.00	5.22%	4.52%
39 LIBERTY	1,925,737.34	1,253,205.61	(672,531.73)	279,850.00	16.58%	10.58%
40 MADISON	1,914,879.98			498,650.00	9.99%	
41 MANATEE	10,296,605.31	20,201,995.00	9,905,389.69	9,120,254.00	3.33%	6.13%
42 MARION	25,543,992.67	18,067,983.33	(7,476,009.34)	8,262,531.00	8.60%	5.87%
43 MARTIN	8,156,557.58	8,572,434.30	415,876.72	3,825,292.00	5.90%	6.07%
44 MONROE	3,407,991.74	3,053,017.00	(354,974.74)	1,694,615.00	4.12%	3.56%
45 NASSAU	7,147,321.53	6,402,824.23	(744,497.30)	2,289,812.00	9.20%	7.72%
46 OKALOOSA	48,087,244.75	15,446,838.40	(32,640,406.35)	5,822,833.00	23.27%	7.35%
47 OKEECHOBEE	8,884,893.32	2,064,798.94	(6,820,094.38)	1,359,879.00	17.71%	4.22%
48 ORANGE	215,063,933.14	135,452,468.00	(79,611,465.14)	37,247,269.00	17.49%	10.89%
49 OSCEOLA	51,822,879.09	33,550,963.00	(18,271,916.09)	11,031,393.00	14.17%	8.77%
50 PALM BEACH	84,494,971.22	85,532,000.00	1,037,028.78	38,091,758.00	6.57%	6.31%
51 PASCO	30,267,490.00			13,888,641.00	6.29%	
52 PINELLAS	62,168,212.50	74,786,880.53	12,618,668.03	21,713,530.00	7.63%	9.18%
53 POLK	56,961,091.74	47,794,704.53	(9,166,387.21)	19,233,534.00	8.54%	7.01%
54 PUTNAM	6,679,987.94	3,702,796.94	(2,977,191.00)	2,171,602.00	8.26%	4.64%
55 ST. JOHNS	54,800,260.80			6,343,155.00	24.36%	
56 ST. LUCIE	17,762,056.33	21,412,152.87	3,650,096.54	7,515,646.00	6.28%	7.43%
57 SANTA ROSA	18,983,993.31	16,985,796.00	(1,998,197.31)	4,876,884.00	11.24%	9.75%
58 SARASOTA	63,845,837.00	52,404,043.00	(11,441,794.00)	8,691,995.00	17.14%	14.23%
59 SEMINOLE	47,369,613.00	54,446,710.00	7,077,097.00	13,328,674.00	10.64%	12.08%
60 SUMTER	5,521,286.00	5,456,490.00	(64,796.00)	1,487,635.00	10.71%	9.96%
61 SUWANNEE	7,611,321.04	4,359,699.24	(3,251,621.80)	1,159,912.00	18.07%	10.00%
62 TAYLOR	1,480,150.58	1,602,156.00	122,005.42	540,329.00	6.65%	7.86%
63 UNION	675,762.44	646,849.06	(28,913.38)	435,999.00	3.95%	3.70%
64 VOLUSIA	38,615,777.00	51,605,705.00	12,989,928.00	12,436,516.00	8.75%	11.82%
65 WAKULLA	3,909,988.96	4,405,393.18	495,404.22	995,422.00	10.60%	11.92%
66 WALTON	3,987,051.28	2,944,123.46	(1,042,927.82)	1,412,497.00	6.51%	4.85%
67 WASHINGTON	8,652,308.35	1,777,344.92	(6,874,963.43)	710,266.00	26.13%	5.58%
TOTAL	1,915,749,446.39	1,507,898,102.27	(304,982,696.30)	548,879,677.00	9.94%	8.00%