

The Florida Senate
HOUSE MESSAGE SUMMARY

Prepared By: The Professional Staff of the Committee on Reapportionment

[2022s00102.hms.re]

BILL: CS/SB102

INTRODUCER: Reapportionment Committee and Senator Rodrigues

SUBJECT: Establishing the Congressional Districts of the State

DATE: March 4, 2022

I. Amendments Contained in Message:

House Amendment 1 – 269533 (body with title)

II. Summary of Amendments Contained in Message:

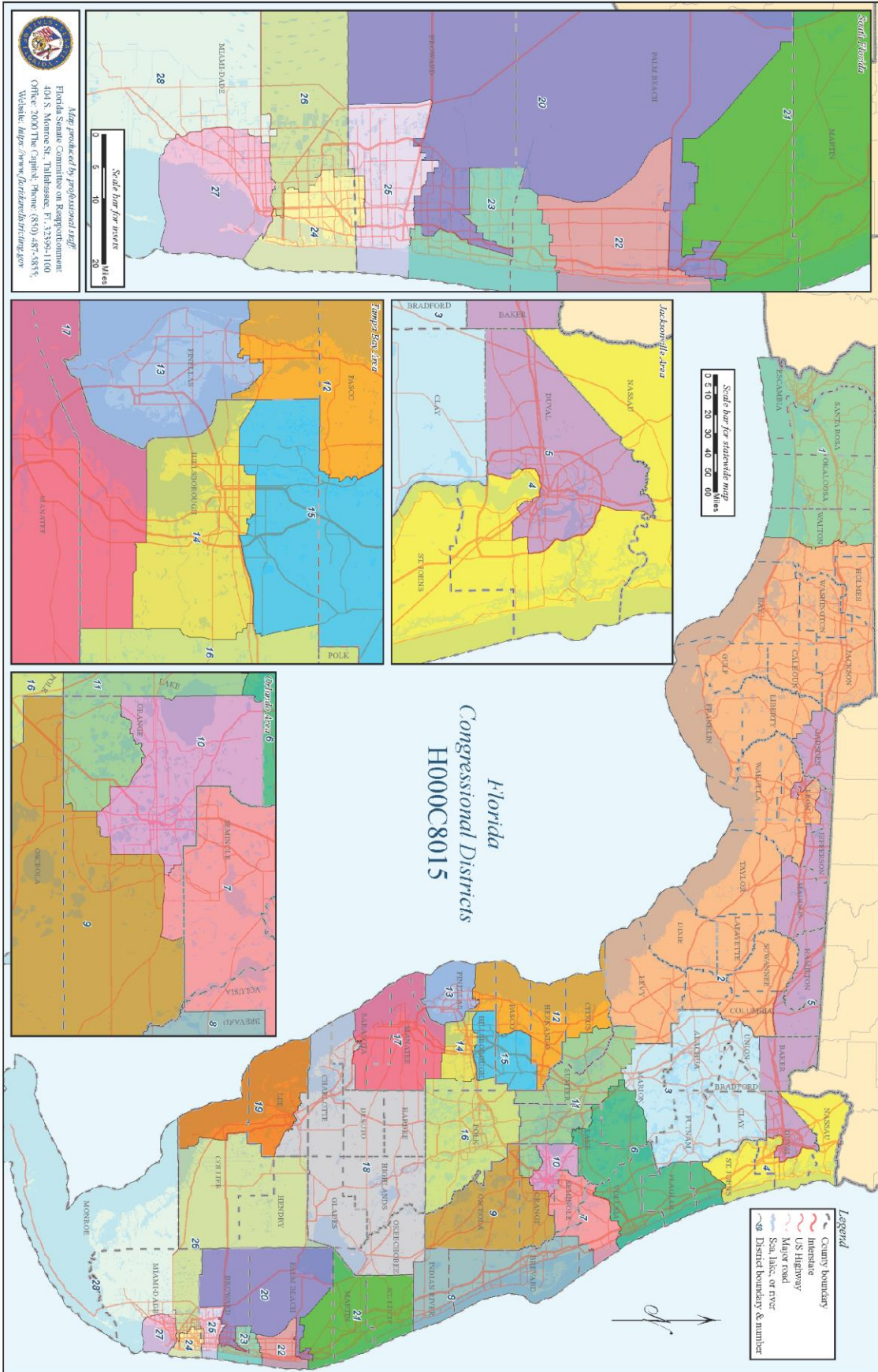
House Amendment 1 – Barcode 269533 replaces the substance of Redistricting Plan S035C8060 with plans H000C8019 and H000C8015.

Plan H000C8019, the “primary” plan, apportions the state into 28 single-member congressional districts. This plan will serve as the map for elections beginning in 2022 and thereafter unless Congressional District 5 is invalidated by a court.

Plan H000C8015, the “secondary” plan, apportions the state into 28 single-member congressional districts. If Congressional District 5 in the “primary” map is invalidated, Plan H000C8015 will take immediate effect and serve as Florida’s congressional districts for elections beginning in 2022 and thereafter.

House Amendment 1 additionally provides that any action challenging this act shall be commenced within 30 days upon becoming law.

The attached maps and statistical analysis provide details for congressional plans H000C8019 and H000C8015 in House Amendment 1.



3/31/2022

Census and Boundary Statistics

Plan H000C8015

Dist.	Deviation		Voting Age Population		Area (sq.mi.)	Perim. (mi.)	Convex Hull		Polshy-Popper		Reock Ratio		Counties		Cities		Political and Geographic Boundaries:						
	Total	%	Black	Hisp.			Area	Perim.	Area	Perim.	Ratio	Ratio	Whole	Parts	Whole	Parts	City	County	Road	Water	Rail	Non-Pol/Geo	
1	0	0.00%	13.54%	6.69%	4,416	341	0.87	0.48	0.48	0.54	3	1	16	0	8%	78%	10%	53%	0%	3%			
2	0	0.00%	14.53%	6.32%	15,766	884	0.72	0.25	0.31	0.31	15	4	56	1	6%	78%	15%	46%	0%	2%			
3	0	0.00%	16.11%	10.49%	3,751	295	0.89	0.54	0.71	0.71	5	1	28	0	18%	78%	5%	25%	0%	15%			
4	0	0.00%	10.24%	8.94%	1,725	350	0.64	0.18	0.33	0.33	1	2	7	1	12%	76%	17%	55%	2%	2%			
5	0	0.00%	43.48%	9.24%	3,648	646	0.66	0.11	0.11	0.11	4	4	16	2	12%	73%	23%	13%	0%	2%			
6	0	0.00%	10.23%	9.76%	2,737	316	0.77	0.34	0.48	0.48	1	4	20	2	17%	45%	14%	36%	3%	22%			
7	0	0.00%	11.42%	21.14%	914	169	0.82	0.40	0.50	0.50	1	2	12	2	26%	47%	19%	31%	0%	15%			
8	0	0.00%	9.69%	10.00%	2,263	272	0.81	0.38	0.29	0.29	2	1	22	0	3%	92%	1%	54%	0%	2%			
9	0	0.00%	13.13%	50.84%	1,956	270	0.86	0.34	0.48	0.48	1	1	2	1	2%	86%	10%	36%	0%	4%			
10	0	0.00%	28.80%	24.60%	377	110	0.77	0.39	0.50	0.50	0	1	9	1	20%	55%	23%	20%	0%	18%			
11	0	0.00%	8.35%	15.88%	2,091	289	0.81	0.31	0.32	0.32	1	4	19	1	12%	50%	15%	13%	1%	31%			
12	0	0.00%	4.53%	10.60%	2,089	312	0.61	0.27	0.40	0.40	1	3	7	1	10%	72%	6%	52%	0%	13%			
13	0	0.00%	11.46%	9.77%	625	112	0.91	0.63	0.68	0.68	0	1	21	1	44%	70%	0%	86%	0%	1%			
14	0	0.00%	20.26%	26.06%	456	104	0.87	0.53	0.45	0.45	0	1	0	2	23%	19%	26%	32%	1%	36%			
15	0	0.00%	13.09%	26.65%	826	146	0.84	0.49	0.47	0.47	0	2	5	1	7%	51%	39%	6%	7%	7%			
16	0	0.00%	14.94%	23.21%	2,198	255	0.92	0.42	0.52	0.52	1	1	17	1	2%	84%	2%	26%	3%	12%			
17	0	0.00%	7.55%	14.29%	1,953	207	0.92	0.57	0.60	0.60	1	2	7	0	22%	57%	5%	51%	0%	14%			
18	0	0.00%	7.69%	15.79%	5,827	404	0.82	0.45	0.48	0.48	6	2	12	1	13%	74%	6%	29%	0%	4%			
19	0	0.00%	5.58%	15.79%	1,867	247	0.78	0.38	0.33	0.33	0	2	7	1	13%	62%	14%	61%	0%	8%			
20	0	0.00%	50.11%	22.98%	2,397	330	0.77	0.28	0.50	0.50	0	2	13	8	28%	37%	15%	13%	3%	22%			
21	0	0.00%	12.48%	15.14%	1,888	219	0.82	0.49	0.50	0.50	2	1	16	2	9%	68%	7%	48%	0%	16%			
22	-1	0.00%	15.88%	24.65%	345	102	0.74	0.42	0.44	0.44	0	1	19	1	36%	24%	18%	36%	0%	24%			
23	0	0.00%	13.17%	20.51%	254	105	0.79	0.29	0.50	0.50	0	2	11	5	29%	28%	16%	38%	9%	20%			
24	0	0.00%	42.17%	38.46%	183	69	0.90	0.48	0.48	0.48	0	2	18	2	36%	36%	32%	46%	0%	10%			
25	0	0.00%	17.52%	42.20%	237	88	0.81	0.38	0.42	0.42	0	1	8	3	64%	29%	12%	20%	0%	15%			
26	0	0.00%	7.11%	75.41%	3,684	365	0.67	0.35	0.40	0.40	1	2	10	1	9%	69%	20%	19%	0%	4%			
27	0	0.00%	7.07%	74.18%	281	70	0.95	0.73	0.71	0.71	0	1	7	1	10%	18%	34%	59%	0%	7%			
28	0	0.00%	10.37%	73.39%	6,710	591	0.55	0.24	0.22	0.22	1	1	8	0	1%	88%	8%	86%	0%	1%			

Page 2

District lines and City and County Boundaries	In Plan H000C8015
Number of Counties	67
Counties with only one district	47
Districts with only one county	6
Counties split into more than one district	20
Counties with all population in a single district	47
Aggregate number of county splits	52
Aggregate number of splits with population	52
Number of Cities	412
Cities with only one district	393
Cities split into more than one district	19
Cities with all population in only one district	394
Aggregate number of city splits	42
Aggregate number of splits with population	41

Overall numbers of county and city splits:

3/1/2022

Functional Analysis - Summary

Plan H000C8015

Page 5

Dist.	2020 Census		RV who are:				RV who are:				2020 General Election Registered Voters														
	Black	Hisp	DEM	REP	OTH	Black	Hisp	DEM	REP	NPA/oth	DEM	Hisp	REP	NPA/oth	DEM	Hisp	REP	Black	Hisp	NPA/oth	Black	Hisp	NPA/oth		
5	43.49%	9.24%	53.76%	26.68%	19.56%	49.29%	4.80%	63.09%	2.78%	13.21%	43.04%	20.83%	35.03%	67.53%	3.03%	4.50%	3.75%	29.21%	8.60%	8.60%	4.50%	3.75%	29.21%	8.60%	8.60%
9	13.13%	50.84%	41.74%	23.23%	35.03%	9.40%	45.44%	71.95%	3.98%	24.05%	45.57%	13.80%	39.64%	16.21%	50.68%	1.61%	26.98%	6.46%	51.41%	51.41%	1.61%	26.98%	6.46%	51.41%	51.41%
10	28.80%	24.60%	46.36%	25.41%	28.23%	24.51%	17.16%	77.83%	3.20%	18.97%	45.93%	14.94%	38.11%	41.14%	17.37%	3.08%	10.08%	16.47%	23.16%	23.16%	3.08%	10.08%	16.47%	23.16%	23.16%
20	50.11%	22.98%	61.33%	13.79%	24.88%	46.82%	15.27%	81.47%	2.53%	15.98%	45.07%	17.88%	36.51%	62.20%	11.47%	8.57%	19.75%	30.08%	22.41%	22.41%	8.57%	19.75%	30.08%	22.41%	22.41%
24	42.17%	38.46%	60.05%	12.59%	27.27%	44.01%	27.28%	82.63%	2.44%	14.93%	42.23%	20.67%	37.09%	60.58%	19.19%	8.52%	44.73%	24.03%	26.93%	26.93%	8.52%	44.73%	24.03%	26.93%	26.93%
26	7.11%	75.41%	30.43%	37.47%	34.10%	5.62%	62.75%	77.83%	4.40%	17.62%	29.20%	38.02%	34.77%	14.58%	60.25%	0.65%	60.31%	3.05%	68.00%	68.00%	0.65%	60.31%	3.05%	68.00%	68.00%
27	71.07%	74.18%	54.57%	33.38%	34.01%	6.14%	62.95%	78.63%	3.69%	17.62%	28.03%	38.96%	35.00%	13.97%	50.31%	0.68%	73.27%	3.38%	64.68%	64.68%	0.68%	73.27%	3.38%	64.68%	64.68%
28	10.32%	73.95%	33.92%	32.98%	33.51%	8.68%	65.92%	77.57%	3.48%	18.97%	28.78%	35.48%	35.75%	19.84%	54.23%	0.92%	69.60%	4.89%	68.19%	68.19%	0.92%	69.60%	4.89%	68.19%	68.19%

3/31/2022

Functional Analysis - Summary

Plan H000C8015

Dist.	2020 Census		Average Primary Election Turnout		Average General Election Turnout		Black Voters who are:		Hispanic Voters who are:		General Election Performance in Statewide Elections 2012-2020																
	VAP who are:	DEM who are:	REP who are:	DEM who are:	REP who are:	DEM who are:	REP who are:	DEM who are:	REP who are:	DEM who are:	REP who are:	Avg. Perf.	Wins	Margins	AVG												
5	43.48%	9.24%	66.15%	1.13%	2.72%	1.51%	57.37%	29.38%	13.25%	66.06%	2.50%	3.25%	2.67%	25.84%	6.54%	89.62%	2.25%	8.30%	45.17%	25.94%	28.23%	57.6%	14	0	D +30.9%	D +5.3%	D -17.2%
9	13.13%	50.84%	19.07%	36.32%	1.05%	14.46%	43.53%	29.04%	27.43%	17.82%	44.28%	1.33%	15.94%	0.20%	42.85%	78.60%	3.91%	17.42%	52.63%	15.52%	31.84%	57.2%	12	2	D +34.0%	D +0.6%	D -16.6%
10	28.80%	24.60%	44.89%	8.28%	1.74%	4.80%	45.65%	31.63%	21.70%	42.47%	13.46%	2.08%	7.11%	13.84%	17.55%	84.33%	2.79%	12.84%	50.78%	18.23%	30.87%	58.3%	12	2	D +3.1%	R +0.3%	D -18.9%
20	50.11%	22.98%	64.90%	4.45%	6.38%	10.02%	65.4%	14.54%	18.97%	62.40%	8.78%	6.96%	14.88%	28.23%	19.00%	86.64%	2.11%	11.18%	49.97%	18.74%	31.05%	78.4%	14	0	D +65.2%	D +4.1%	D -57.8%
24	42.17%	38.46%	68.02%	10.57%	6.97%	49.03%	65.57%	12.25%	21.17%	63.27%	15.70%	7.45%	43.92%	24.06%	34.66%	87.45%	1.89%	10.54%	44.74%	23.56%	31.65%	80.2%	14	0	D +69%	D +48.9%	D -61.5%
26	7.11%	75.41%	20.88%	40.24%	0.40%	58.47%	31.34%	42.53%	25.31%	18.81%	54.50%	0.52%	58.42%	2.88%	69.21%	84.33%	3.55%	12.01%	29.01%	42.50%	28.67%	43.5%	2	12	R +21.2%	R +0.5%	R +11.0%
27	7.07%	74.14%	17.86%	36.25%	0.39%	75.67%	35.72%	38.10%	26.18%	19.24%	45.97%	0.53%	72.01%	3.20%	63.12%	83.84%	3.12%	12.96%	26.84%	45.71%	27.44%	50.6%	9	5	D +17.4%	R +0.6%	D +1.7%
28	10.32%	73.35%	22.56%	36.22%	0.54%	65.41%	35.69%	36.75%	27.55%	21.17%	47.57%	0.76%	66.17%	4.66%	64.29%	82.78%	3.06%	14.07%	28.65%	41.35%	30.00%	50.7%	9	5	D +15.7%	R +2.2%	D +3%

3/31/2022

Functional Analysis - Returns

Page 7

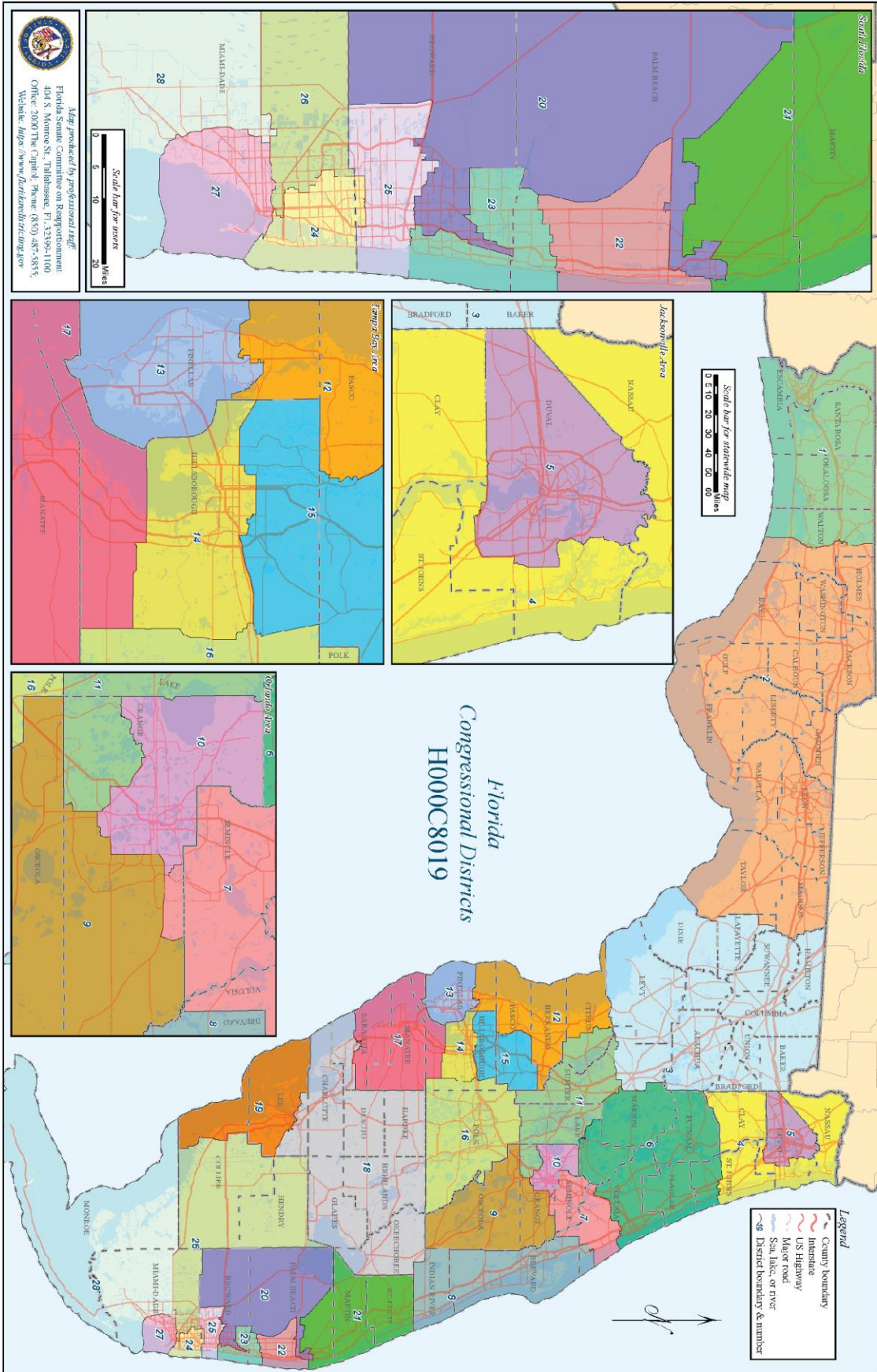
		5	9	10	20	24	26	27	28
Plan H00009015 Primary Elections		49.48%	13.13%	28.80%	50.11%	42.17%	7.11%	7.07%	10.32%
	BVAP	9.24%	50.84%	22.98%	22.98%	38.46%	75.41%	74.18%	73.35%
Governor (REP)	R. Baldauf	0.73%	0.53%	0.70%	1.45%	1.93%	1.86%	1.52%	1.82%
	R. Desantis	53.16%	53.39%	49.95%	62.28%	66.81%	66.34%	67.70%	67.72%
	R. Dewine	1.12%	1.97%	1.44%	2.05%	3.26%	2.81%	3.13%	3.31%
	R. Langford	1.13%	1.47%	1.87%	1.89%	1.93%	1.41%	1.56%	1.70%
	R. Mercedene	0.42%	1.29%	0.75%	1.53%	2.21%	1.66%	2.16%	2.03%
Governor (DEM)	R. Nathan	0.73%	0.51%	0.82%	1.52%	2.71%	1.10%	1.41%	1.41%
	R. Putnam	40.90%	38.23%	42.16%	25.44%	16.79%	21.84%	18.87%	18.11%
	R. White	1.60%	2.65%	2.06%	2.84%	3.90%	2.58%	3.49%	3.51%
	D. Gillum	58.25%	30.12%	43.54%	53.43%	50.66%	29.57%	28.97%	31.80%
	D. Graham	22.15%	29.52%	29.90%	13.31%	11.07%	20.77%	22.66%	21.12%
Agriculture Commissioner (REP)	D. Greene	5.78%	14.13%	8.51%	10.21%	9.33%	9.55%	7.98%	10.56%
	D. King	1.44%	4.25%	4.78%	0.91%	0.76%	2.47%	1.56%	2.11%
	D. Levine	10.87%	19.02%	12.06%	21.28%	27.36%	34.05%	37.17%	34.26%
	D. Lundmark	0.48%	1.17%	0.43%	0.29%	0.38%	1.42%	0.79%	0.90%
	D. Wetthebee	0.84%	1.63%	0.67%	0.37%	0.32%	1.32%	0.70%	0.96%
Agriculture Commissioner (DEM)	R. Moody	57.79%	54.31%	56.30%	55.46%	53.14%	52.04%	54.81%	54.83%
	R. White	42.22%	45.68%	43.69%	44.16%	46.91%	47.93%	45.20%	45.11%
	D. Shaw	78.50%	60.80%	74.52%	81.41%	82.21%	65.59%	74.10%	69.58%
	D. Torres	21.48%	39.20%	25.48%	18.58%	17.77%	33.87%	25.90%	30.43%
	R. Caldwell	35.47%	36.83%	34.13%	46.02%	39.87%	43.31%	40.18%	42.08%
Agriculture Commissioner (REP)	R. Ginnley	20.72%	31.13%	31.13%	26.45%	31.49%	29.28%	32.65%	31.53%
	R. McCallister	8.64%	16.42%	15.37%	20.87%	16.88%	12.74%	16.76%	16.54%
	R. Troutman	34.98%	15.21%	19.04%	8.59%	11.33%	15.55%	10.38%	9.57%
	D. Fried	60.27%	55.00%	55.66%	63.96%	59.13%	51.02%	59.89%	53.25%
	D. Porter	19.99%	18.80%	16.93%	16.09%	17.30%	20.36%	15.15%	20.42%
Agriculture Commissioner (DEM)	D. Walker	18.69%	28.22%	27.41%	19.91%	23.59%	28.37%	24.89%	26.19%
	R. De La Fuente	10.03%	9.96%	12.08%	84.46%	84.02%	90.34%	87.34%	87.65%
	R. Scott	89.92%	90.04%	87.89%	84.46%	84.02%	90.34%	87.34%	87.65%
	R. Berdoff	22.63%	17.33%	17.72%	14.86%	8.38%	9.21%	5.63%	6.40%
	R. Rivera	3.62%	3.35%	2.39%	4.55%	3.20%	2.21%	1.92%	2.93%
US Senate (REP)	R. Rubio	67.77%	71.55%	74.24%	70.37%	80.78%	84.85%	88.89%	85.70%
	R. Young	5.77%	7.64%	5.44%	9.04%	7.31%	3.65%	3.50%	4.84%
	D. De La Fuente	4.09%	15.35%	4.00%	3.13%	5.63%	19.86%	12.21%	13.69%
	D. Grayson	17.41%	45.21%	39.94%	10.08%	10.80%	11.46%	11.25%	11.07%
	D. Keith	15.22%	9.85%	12.58%	14.72%	13.76%	14.16%	17.89%	15.57%
US Senate (DEM)	D. Lucier	12.35%	1.92%	2.13%	2.22%	2.70%	1.97%	1.59%	1.65%
	D. Murphy	50.72%	28.14%	41.20%	69.53%	66.98%	52.07%	56.90%	57.52%
	R. Adeshina	1.29%	1.74%	1.86%	2.51%	2.89%	1.45%	1.82%	1.79%
	R. Cuevas Neander	7.97%	12.33%	10.24%	14.70%	16.26%	10.38%	13.29%	15.11%
	R. Scott	90.59%	85.81%	87.79%	81.70%	80.61%	87.99%	84.85%	82.94%
2014 Governor (DEM)	D. Ciri	74.06%	76.41%	77.66%	82.85%	84.36%	76.00%	73.98%	78.45%
	D. Rich	25.83%	23.58%	22.27%	16.99%	15.62%	23.65%	25.94%	21.30%
	D. Sheldon	60.76%	60.93%	50.76%	38.33%	46.60%	61.45%	65.53%	61.36%
	D. Thurston	39.20%	39.06%	49.18%	61.50%	59.40%	38.12%	34.43%	38.41%
	R. Mack	57.94%	49.02%	58.53%	65.27%	71.88%	73.44%	77.15%	73.63%
2012 US Senate (REP)	R. McCallister	18.40%	12.08%	10.13%	12.41%	6.67%	8.19%	5.22%	7.31%
	R. Stuart	5.99%	6.81%	4.77%	6.68%	13.36%	12.07%	13.00%	13.19%
	R. Waldon	17.27%	31.78%	26.25%	13.82%	7.69%	6.14%	4.50%	5.63%
	D. Burkett	22.15%	19.73%	13.70%	13.92%	14.22%	21.30%	14.82%	18.34%
	D. Nielson	77.78%	80.23%	86.26%	85.94%	85.75%	78.45%	85.13%	81.50%

3/31/2022

Functional Analysis - Returns

Page 8

		5	9	10	20	24	26	27	28
2020	Plan H000C8015 General Electors	BVAP 9.24%	13.13%	28.80%	50.11%	42.17%	7.11%	7.07%	10.32%
		HVAP	50.84%	24.60%	22.98%	38.46%	75.41%	74.19%	73.35%
2020	President	D_Biden 59.66%	58.35%	62.78%	75.89%	74.18%	40.33%	49.45%	46.42%
		R_Trump 39.19%	40.65%	36.18%	23.52%	25.28%	59.15%	50.01%	52.99%
	Governor	D_Gillum 61.72%	61.55%	63.30%	79.93%	81.45%	44.85%	53.18%	52.49%
		R_DeSantis 37.39%	37.08%	35.67%	19.45%	17.83%	53.75%	45.75%	46.31%
	Attorney General	D_Shaw 58.44%	58.23%	59.28%	78.44%	80.05%	49.05%	51.99%	50.86%
2018	Chief Financial Officer	R_Moody 40.03%	39.75%	38.97%	20.26%	18.39%	54.93%	46.19%	46.94%
		D_Ring 59.61%	60.69%	61.24%	79.79%	81.53%	44.45%	52.59%	51.92%
	Agriculture Commissioner	R_Patrons 40.35%	39.31%	38.76%	20.20%	18.46%	55.53%	47.41%	48.07%
		D_Fried 60.54%	62.07%	63.21%	80.09%	82.00%	45.64%	54.63%	53.44%
	US Senate	R_Caldwell 39.46%	37.95%	36.79%	19.89%	18.00%	54.35%	45.38%	46.56%
2016	President	D_Clinton 57.86%	61.85%	60.80%	77.83%	81.05%	51.21%	57.42%	56.46%
		R_Trump 38.29%	34.59%	35.48%	20.39%	17.28%	48.49%	40.05%	40.81%
	US Senate	D_Murphy 52.11%	54.98%	55.69%	75.64%	75.93%	41.07%	47.78%	47.69%
		R_Rubio 44.58%	40.91%	40.45%	22.42%	21.99%	58.70%	50.17%	49.92%
	Governor	D_Cratt 55.44%	52.68%	55.47%	79.92%	82.18%	41.24%	50.00%	51.20%
2014	Attorney General	R_Scott 40.89%	42.21%	39.64%	17.97%	16.24%	56.03%	47.55%	45.89%
		D_Sheldon 52.20%	48.96%	52.75%	76.13%	79.80%	36.85%	46.03%	45.82%
	Chief Financial Officer	R_Bondi 45.27%	48.12%	44.23%	22.42%	18.77%	60.82%	51.95%	51.75%
		D_Rankin 52.66%	49.04%	49.58%	75.48%	79.06%	38.24%	43.49%	45.87%
	Agriculture Commissioner	R_Atkwater 47.34%	50.95%	50.42%	24.50%	20.53%	61.75%	56.52%	54.11%
2012	President	D_Obama 60.17%	61.57%	59.68%	80.52%	82.82%	49.53%	52.22%	54.83%
		R_Romney 39.01%	37.55%	39.48%	19.06%	16.83%	49.98%	47.27%	44.61%
	US Senate	D_Nelson 64.24%	66.05%	64.54%	81.97%	83.46%	51.33%	54.47%	56.33%
		R_Mack 33.30%	31.47%	33.54%	16.82%	15.49%	48.52%	44.15%	42.03%



3/1/2022

Census and Boundary Statistics

Plan H000C8019

Dist	Deviation		Voting Age Population		Area (sq.mi.)	Perfm. (mi)	Conver		Folshy-		Reack		Counties		Cities		Political and Geographic Boundaries						
	Total	%	Black	Hisp.			Hull	Popper	Ratio	Ratio	Whole	Parts	Whole	Parts	City	County	Road	Water	Rail	Non-Po/Geo			
1	0	0.00%	13.54%	6.69%	4,416	341	0.87	0.48	0.52	3	1	16	8%	78%	10%	53%	0%	3%					
2	0	0.00%	23.09%	6.42%	12,839	578	0.82	0.48	0.46	14	1	50	5%	84%	7%	49%	0%	3%					
3	0	0.00%	15.61%	9.97%	8,230	443	0.91	0.53	0.63	10	2	41	0%	5%	82%	3%	31%	0%					
4	0	0.00%	8.91%	7.95%	2,190	408	0.68	0.17	0.40	2	2	12	25%	80%	5%	46%	0%	10%					
5	0	0.00%	35.32%	10.75%	630	131	0.90	0.45	0.52	0	1	1	65%	65%	10%	29%	1%	21%					
6	0	0.00%	10.89%	9.69%	3,856	312	0.92	0.50	0.71	2	4	21	14%	49%	14%	37%	0%	18%					
7	0	0.00%	11.42%	21.14%	914	169	0.82	0.40	0.50	1	1	12	26%	47%	19%	31%	0%	15%					
8	0	0.00%	9.69%	10.00%	2,263	272	0.81	0.38	0.29	2	1	22	3%	92%	1%	54%	0%	2%					
9	0	0.00%	13.13%	50.84%	1,956	270	0.86	0.34	0.48	1	1	2	2%	86%	10%	36%	0%	4%					
10	0	0.00%	28.80%	24.60%	377	110	0.77	0.39	0.50	0	1	9	20%	55%	23%	20%	0%	19%					
11	0	0.00%	8.53%	15.87%	1,923	274	0.79	0.32	0.36	1	4	22	12%	48%	15%	17%	0%	29%					
12	0	0.00%	4.53%	10.60%	2,089	312	0.61	0.27	0.40	1	3	7	10%	72%	6%	57%	0%	13%					
13	0	0.00%	11.46%	9.77%	625	112	0.91	0.63	0.68	0	1	21	44%	70%	0%	86%	0%	1%					
14	0	0.00%	20.26%	26.06%	456	104	0.87	0.53	0.45	0	1	0	23%	19%	28%	32%	1%	36%					
15	0	0.00%	13.09%	26.65%	826	146	0.84	0.49	0.47	0	2	5	7%	51%	39%	6%	7%	7%					
16	0	0.00%	14.94%	23.21%	2,198	255	0.92	0.42	0.52	1	1	17	2%	84%	2%	26%	3%	12%					
17	0	0.00%	7.55%	14.29%	1,953	207	0.92	0.57	0.50	1	1	7	22%	57%	5%	51%	0%	14%					
18	0	0.00%	7.69%	15.79%	5,827	404	0.82	0.45	0.48	6	2	12	13%	74%	6%	29%	0%	4%					
19	0	0.00%	5.58%	15.79%	1,867	247	0.78	0.38	0.33	0	2	7	1%	13%	62%	14%	61%	8%					
20	0	0.00%	50.11%	22.98%	2,397	330	0.77	0.28	0.50	0	2	13	28%	37%	15%	13%	3%	22%					
21	0	0.00%	12.46%	15.14%	1,888	219	0.82	0.49	0.50	2	1	16	9%	66%	7%	48%	0%	16%					
22	-1	0.00%	15.86%	24.65%	345	102	0.74	0.42	0.44	0	1	19	36%	24%	18%	36%	0%	24%					
23	0	0.00%	13.17%	20.51%	254	105	0.79	0.29	0.50	0	2	11	5%	29%	16%	38%	9%	20%					
24	0	0.00%	42.17%	38.46%	183	69	0.90	0.48	0.48	0	2	18	36%	36%	32%	46%	0%	10%					
25	0	0.00%	17.52%	42.26%	237	88	0.81	0.38	0.42	0	1	8	64%	29%	12%	20%	0%	15%					
26	0	0.00%	7.11%	74.41%	3,684	385	0.67	0.35	0.40	1	2	10	9%	69%	20%	19%	0%	4%					
27	0	0.00%	7.07%	74.18%	281	70	0.95	0.73	0.71	0	1	7	10%	18%	34%	59%	0%	7%					
28	0	0.00%	103.2%	73.5%	6,710	591	0.55	0.24	0.22	1	1	8	1%	86%	8%	86%	0%	1%					

District lines and City and County Boundaries	In Plan H000C8019
Number of Counties	67
Counties with only one district	49
Districts with only one county	7
Counties split into more than one district	18
Counties with all population in a single district	49
Aggregate number of county splits	48
Aggregate number of splits with population	48
Number of Cities	412
Cities with only one district	394
Cities split into more than one district	18
Cities with all population in only one district	395
Aggregate number of city splits	40
Aggregate number of splits with population	39

Overall numbers of county and city splits:

3/1/2022

Functional Analysis - Summary

Plan H000C8019

Dist.	2020 Census				2020 General Election Registered Voters																		
	VAF who are:		RV who are:		RV who are:		RV who are:		Black Voters who are:			Hispanic Voters who are:			DEM who are:			REP who are:			NPAOH who are:		
	Black	Hisp	DEM	REP	OTH	Black	Hisp	DEM	REP	NPAOH	DEM	Hisp	REP	NPAOH	Black	Hisp.	Black	Hisp.	Black	Hisp.	Black	Hisp.	
5	35.32%	10.75%	46.32%	31.48%	22.20%	34.31%	5.87%	81.59%	3.39%	15.03%	40.04%	23.13%	36.43%	61.31%	5.07%	3.75%	4.31%	23.56%	5.74%	23.56%	5.74%	16.47%	23.16%
9	13.13%	50.84%	41.74%	23.23%	35.03%	9.40%	40.43%	71.97%	3.98%	24.05%	46.97%	13.80%	39.64%	16.21%	50.69%	1.61%	26.98%	6.46%	51.41%	6.46%	51.41%	16.47%	23.16%
10	28.80%	24.60%	46.86%	25.41%	28.23%	24.51%	17.16%	77.83%	3.20%	18.97%	46.93%	14.94%	38.11%	41.14%	17.37%	3.08%	10.08%	16.47%	23.16%	16.47%	23.16%	16.47%	23.16%
20	50.11%	22.98%	61.38%	13.79%	24.88%	46.82%	15.27%	81.47%	2.53%	15.98%	46.07%	17.38%	36.41%	62.20%	11.47%	8.57%	19.25%	30.08%	22.41%	30.08%	22.41%	30.08%	22.41%
24	42.17%	38.46%	60.04%	12.59%	27.37%	44.01%	27.28%	82.61%	2.44%	14.94%	42.23%	20.67%	37.09%	60.56%	19.19%	8.52%	44.78%	24.03%	35.98%	24.03%	35.98%	24.03%	35.98%
26	7.11%	75.41%	30.43%	37.47%	32.10%	5.61%	63.79%	77.83%	4.40%	17.63%	29.20%	36.02%	34.27%	14.38%	60.25%	0.65%	60.24%	3.09%	68.00%	3.09%	68.00%	3.09%	68.00%
27	7.07%	74.36%	34.57%	33.49%	34.01%	6.14%	62.79%	79.64%	3.69%	17.42%	28.02%	38.09%	34.01%	14.97%	50.31%	0.84%	74.27%	3.98%	64.88%	3.98%	64.88%	3.98%	64.88%
28	10.32%	74.55%	33.82%	32.38%	35.11%	8.68%	63.92%	71.57%	3.48%	18.97%	28.78%	33.48%	33.75%	19.84%	54.23%	0.92%	69.60%	4.59%	68.19%	4.59%	68.19%	4.59%	68.19%

3/1/2022

Functional Analysis - Summary

Page 6

Plan H000C8019

Dist.	2020 Census		Average Primary Election Turnout		Average General Election Turnout		Average Primary Election Turnout		Average General Election Turnout		Average Primary Election Turnout		Average General Election Turnout		Avg. Perf.		Wins		Margins				
	Black	Hisp	DEM	REP	DEM	REP	DEM	REP	DEM	REP	DEM	REP	DEM	REP	DEM	REP	DEM	REP	MAX	MIN	AVG		
5	35.32%	10.75%	62.77%	1.71%	47.49%	15.74%	61.70%	3.56%	2.72%	3.00%	20.62%	7.20%	87.35%	2.97%	9.67%	40.01%	20.29%	29.74%	51.0%	47.3%	D +17.5%	R +3.9%	D +4.3%
9	13.13%	50.84%	19.07%	36.32%	43.53%	29.04%	17.82%	44.58%	1.33%	19.64%	6.26%	42.85%	78.60%	3.91%	17.42%	52.63%	15.52%	31.84%	57.2%	41.0%	D +34.0%	D +0.6%	D +16.0%
10	28.80%	24.60%	44.89%	8.28%	46.66%	31.63%	42.47%	13.46%	2.08%	7.11%	13.84%	17.55%	84.33%	2.79%	12.84%	50.78%	18.23%	30.87%	58.3%	40.0%	D +9.1%	R +0.3%	D +18.9%
20	50.11%	22.98%	64.96%	4.43%	66.49%	14.54%	18.97%	8.78%	6.96%	14.86%	28.23%	19.06%	86.64%	2.11%	11.19%	49.92%	18.74%	31.05%	78.4%	20.8%	D +65.2%	D +5.1%	D +57.8%
24	42.17%	38.46%	68.02%	10.57%	65.57%	12.25%	21.17%	63.27%	7.45%	43.92%	24.06%	34.66%	87.54%	1.89%	10.54%	44.74%	23.56%	31.66%	80.3%	18.9%	D +68%	D +48.9%	D +61.5%
26	7.11%	75.61%	20.88%	44.24%	31.54%	41.55%	18.81%	54.30%	0.52%	58.42%	2.88%	65.22%	84.33%	3.55%	12.06%	29.01%	42.83%	28.67%	43.9%	55.2%	R +24.2%	R +0.5%	R +11.6%
27	7.07%	71.18%	17.86%	36.73%	25.72%	38.10%	18.24%	61.97%	0.52%	72.01%	2.42%	63.12%	84.94%	3.12%	12.96%	26.84%	46.71%	27.44%	50.6%	49.5%	D +17.4%	R +0.6%	D +1.7%
28	10.32%	73.35%	21.56%	36.22%	35.09%	50.73%	21.17%	47.97%	0.78%	66.17%	4.96%	64.28%	82.78%	3.08%	10.07%	28.65%	41.33%	30.09%	50.7%	48.0%	D +15.7%	R +2.2%	D +3%

3/1/2022

Functional Analysis - Returns

Page 7

Plan H00003019	Primary Elections	BVA	Returns																							
			5	9	10	20	24	26	27	28																
Governor (REP)	R. Baldauf	0.71%	0.93%	0.70%	1.45%	1.93%	1.86%	1.93%	1.52%	1.82%																
	R. Decanis	59.21%	53.39%	49.98%	62.28%	66.81%	66.34%	67.70%	67.72%	3.31%																
	R. Devine	1.18%	1.97%	1.44%	2.05%	3.26%	2.81%	3.13%	1.56%	1.70%																
	R. Langford	1.01%	1.47%	1.87%	1.80%	1.93%	1.41%	1.56%	1.56%	2.03%																
	R. Merchante	0.51%	1.29%	0.75%	1.53%	2.11%	1.68%	2.18%	2.18%	2.03%																
	R. Nathan	0.76%	0.91%	0.82%	1.52%	2.71%	1.10%	1.41%	1.41%	1.41%																
	R. Putnam	34.98%	38.28%	42.16%	25.44%	16.79%	21.84%	18.87%	18.11%	18.11%																
	R. White	1.57%	2.65%	2.06%	2.84%	3.90%	2.58%	3.49%	3.51%	3.51%																
	D. Gillum	54.21%	30.12%	43.54%	53.43%	50.66%	29.57%	28.97%	31.80%	31.80%																
	D. Graham	21.58%	29.52%	29.90%	13.31%	11.07%	9.33%	9.95%	7.98%	10.56%																
D. Greene	6.93%	14.19%	8.51%	10.21%	10.21%	20.77%	22.66%	21.12%	21.12%																	
D. King	1.70%	4.25%	4.78%	0.91%	0.76%	2.47%	2.47%	1.56%	2.11%																	
D. Levine	14.26%	19.02%	12.06%	21.28%	27.38%	34.05%	37.17%	32.66%	32.66%																	
D. Lundmark	0.48%	1.17%	0.45%	0.29%	0.38%	1.42%	0.79%	0.90%	0.90%																	
D. Wettherbee	0.78%	1.63%	0.67%	0.37%	0.32%	1.32%	0.70%	0.90%	0.90%																	
Attorney General (REP)	R. Moody	57.28%	54.31%	56.30%	55.46%	53.14%	52.04%	54.81%	54.83%	54.83%																
R. White	42.75%	45.68%	43.69%	44.16%	46.91%	47.93%	46.20%	45.11%	45.11%																	
Attorney General (DEM)	D. Shaw	75.96%	60.80%	74.52%	81.41%	82.21%	65.99%	74.10%	69.58%	69.58%																
D. Torrens	24.04%	39.20%	25.49%	18.58%	17.77%	33.87%	25.90%	30.43%	30.43%																	
Agriculture Commissioner (REP)	R. Caldwell	32.18%	38.81%	34.31%	43.02%	39.87%	42.31%	40.18%	42.06%	42.06%																
R. Genshley	16.70%	31.39%	31.13%	26.45%	31.49%	29.28%	32.68%	31.53%	31.53%																	
R. McCallister	7.96%	16.42%	15.37%	20.87%	16.88%	12.74%	16.76%	16.54%	16.54%																	
F. Troutman	43.14%	15.21%	19.04%	8.59%	11.33%	15.95%	10.88%	9.57%	9.57%																	
Agriculture Commissioner (DEM)	D. Fried	62.76%	55.00%	55.66%	63.96%	59.13%	51.02%	59.89%	53.25%	53.25%																
D. Porter	20.10%	18.80%	16.93%	16.09%	17.30%	20.36%	15.15%	20.42%	20.42%																	
D. Walker	17.12%	26.22%	27.41%	19.91%	23.59%	28.37%	24.89%	26.19%	26.19%																	
US Senate (REP)	R. De La Fuente	9.48%	9.94%	12.08%	15.12%	15.72%	9.61%	12.64%	12.23%	12.23%																
R. Scott	90.52%	90.04%	87.88%	84.46%	84.02%	90.34%	87.34%	87.65%	87.65%																	
US Senate (REP)	R. Bertruff	28.79%	17.43%	17.72%	14.86%	8.38%	9.21%	5.65%	6.40%	6.40%																
R. Rivera	3.30%	3.35%	2.39%	4.55%	3.20%	2.21%	1.92%	2.93%	2.93%																	
R. Rubio	67.90%	71.55%	74.24%	70.37%	80.78%	84.85%	88.89%	85.70%	85.70%																	
R. Young	5.02%	7.64%	5.44%	9.04%	7.31%	3.65%	3.50%	4.84%	4.84%																	
US Senate (DEM)	D. De La Fuente	3.44%	15.35%	4.00%	3.13%	5.63%	13.80%	12.21%	13.69%	13.69%																
D. Grayson	11.84%	45.21%	39.94%	10.08%	10.80%	11.46%	11.26%	11.07%	11.07%																	
D. Keith	15.68%	9.85%	12.58%	14.72%	13.76%	14.16%	17.89%	15.57%	15.57%																	
D. Lueter	17.28%	1.32%	2.13%	2.22%	2.70%	1.97%	1.55%	1.65%	1.65%																	
D. Murphy	51.70%	28.14%	41.20%	69.53%	66.98%	52.07%	56.90%	57.52%	57.52%																	
Governor (REP)	R. Adesina	0.96%	1.74%	1.86%	2.51%	2.89%	1.45%	1.81%	1.75%																	
R. Cuevas Neander	6.83%	12.33%	10.24%	14.70%	16.26%	10.38%	13.29%	15.11%	15.11%																	
R. Scott	92.24%	85.81%	87.79%	81.70%	80.61%	87.99%	84.85%	82.94%	82.94%																	
Governor (DEM)	D. Ciriaci	68.60%	76.41%	77.66%	82.85%	84.36%	76.00%	73.98%	78.45%	78.45%																
D. Rich	30.37%	23.59%	22.27%	16.99%	15.67%	23.65%	25.94%	21.39%	21.39%																	
Attorney General (DEM)	D. Sheldon	58.73%	60.90%	50.76%	38.39%	46.60%	61.45%	65.55%	61.36%	61.36%																
D. Thurston	41.26%	39.06%	49.18%	61.80%	53.40%	38.12%	34.43%	38.41%	38.41%																	
US Senate (REP)	R. Mack	62.80%	49.02%	58.59%	65.27%	71.88%	73.40%	77.15%	73.63%	73.63%																
R. McCallister	16.93%	12.08%	10.19%	12.41%	6.67%	8.19%	5.22%	7.31%	7.31%																	
R. Stuart	5.77%	6.81%	4.77%	6.66%	13.36%	12.07%	13.00%	13.19%	13.19%																	
R. Waldon	14.36%	31.78%	26.25%	13.82%	7.69%	6.14%	4.50%	5.63%	5.63%																	
US Senate (DEM)	D. Burkett	21.01%	19.73%	13.70%	13.92%	14.22%	21.30%	14.82%	18.34%	18.34%																
D. Neilson	78.99%	80.23%	86.28%	85.94%	85.75%	78.45%	85.13%	81.50%	81.50%																	

3/1/2022

Functional Analysis - Returns

Page 8

		5	9	10	20	24	26	27	28
2020	Plan H000C8019 General Electors	BVAP 35.32%	13.13%	28.80%	50.11%	42.17%	7.11%	7.07%	10.32%
		HWAP 10.25%	50.84%	24.60%	22.98%	38.46%	75.41%	74.18%	73.35%
2020	President	D_Eiden 55.58%	58.35%	62.78%	75.89%	74.18%	40.33%	49.45%	46.42%
		R_Trump 43.11%	40.65%	36.18%	23.52%	25.28%	59.13%	50.01%	52.99%
2020	Governor	D_Gillum 56.70%	61.55%	63.30%	79.93%	81.45%	44.85%	53.18%	52.49%
		R_Desantis 42.37%	37.08%	35.67%	19.45%	17.83%	53.79%	45.75%	46.31%
2020	Attorney General	D_Sraw 53.03%	58.23%	59.28%	78.44%	80.05%	49.05%	51.99%	50.86%
		R_Morady 45.35%	39.76%	38.97%	20.26%	18.39%	54.93%	46.10%	46.94%
2018	Chief Financial Officer	D_Ring 54.27%	60.69%	61.24%	79.79%	81.53%	44.45%	52.59%	51.92%
		R_Patronis 45.73%	39.31%	38.76%	20.20%	18.46%	55.53%	47.41%	48.07%
2018	Agriculture Commissioner	D_Fried 55.15%	62.07%	63.21%	80.09%	82.00%	45.64%	54.63%	53.44%
		R_CalDWell 44.86%	37.93%	36.79%	19.89%	18.00%	54.35%	45.38%	46.56%
2018	US Senator	D_Nelson 55.64%	60.26%	63.31%	80.00%	81.36%	45.20%	54.47%	53.46%
		R_Scott 44.36%	39.71%	36.69%	20.00%	18.64%	54.79%	45.52%	46.55%
2016	President	D_Clinton 52.29%	61.86%	60.80%	77.83%	81.05%	51.21%	57.42%	56.46%
		R_Trump 44.38%	34.59%	35.48%	20.39%	17.28%	46.49%	40.05%	40.81%
2016	US Senate	D_Murphy 44.53%	54.98%	55.69%	75.64%	75.93%	41.07%	47.78%	47.69%
		R_Rubio 51.97%	40.91%	40.45%	22.42%	21.99%	56.70%	50.17%	49.92%
2014	Governor	D_Crist 45.95%	52.68%	55.47%	79.92%	82.18%	41.24%	50.00%	51.20%
		R_Scott 49.80%	42.21%	39.64%	17.97%	16.24%	58.03%	47.55%	45.89%
2014	Attorney General	D_Sheldon 43.69%	48.96%	52.75%	76.13%	79.80%	38.85%	46.03%	45.82%
		R_Bonif 53.40%	48.12%	44.23%	22.42%	18.77%	60.82%	51.98%	51.75%
2014	Chief Financial Officer	D_Frank 44.48%	49.04%	49.58%	75.48%	75.06%	38.24%	48.49%	45.87%
		R_Altwater 55.52%	50.96%	50.42%	24.50%	20.93%	61.75%	56.52%	54.11%
2012	Agriculture Commissioner	D_Hamilton 47.42%	47.89%	49.85%	77.02%	79.78%	37.88%	44.30%	46.04%
		R_Putnam 52.58%	52.11%	50.15%	22.99%	20.21%	62.11%	55.69%	53.95%
2012	President	D_Obama 52.98%	61.57%	59.68%	80.52%	82.82%	49.53%	52.22%	54.83%
		R_Romney 46.20%	37.55%	39.48%	19.06%	18.83%	49.98%	47.27%	44.61%
2012	US Senate	D_Nelson 57.33%	66.05%	64.54%	81.97%	83.46%	51.33%	54.47%	56.33%
		R_Mack 38.83%	31.47%	33.54%	16.82%	15.49%	46.52%	44.15%	42.03%