

FLORIDA HOUSE OF REPRESENTATIVES

BILL ANALYSIS

This bill analysis was prepared by nonpartisan committee staff and does not constitute an official statement of legislative intent.

BILL #: [CS/HB 1219](#)

TITLE: Waterbody Designations

SPONSOR(S): Snyder

COMPANION BILL: [CS/SB 1288](#) (Harrell)

LINKED BILLS: None

RELATED BILLS: None

Committee References

[Natural Resources & Disasters](#)

18 Y, 0 N, As CS



[State Affairs](#)

SUMMARY

Effect of the Bill:

The bill designates SI3, a mangrove island adjacent to the Intracoastal Waterway within Jupiter Sound, as the “Andrew ‘Red’ Harris Spoil Island” and directs the Department of Environmental Protection to erect markers with such designation.

Fiscal or Economic Impact:

None.

[JUMP TO](#)

[SUMMARY](#)

[ANALYSIS](#)

[RELEVANT INFORMATION](#)

[BILL HISTORY](#)

ANALYSIS

EFFECT OF THE BILL:

The bill designates [SI3](#), a mangrove island adjacent to the Intercoastal Waterway within [Jupiter Sound](#), as the “[Andrew ‘Red’ Harris](#) Spoil Island.” The bill directs the Department of Environmental Protection to erect suitable markers with such designation. (Section [1](#))

The bill takes effect July 1, 2026. (Section [2](#))

RELEVANT INFORMATION

SUBJECT OVERVIEW:

Jupiter Inlet

Tidal inlets are channels separating barrier islands leading from the ocean to a bay.¹ The Jupiter Inlet is in northeast Palm Beach County on the southeast Atlantic Coast of Florida and connects the Loxahatchee River and Jupiter Sound to the Atlantic Ocean.² The Jupiter Inlet District manages the inlet channel and its associated structures.³

Jupiter Inlet District

The Jupiter Inlet District (District), established in 1921, is an independent special district in Palm Beach County.⁴ The District’s purpose is for the benefit, health, safety, and welfare of the general public, marine life, near-shore environs and habitats, water quality, and the general environment of the Loxahatchee River and Jupiter Inlet.⁵ The

¹ Duenkel, Teagan and Tiffany Roberts Briggs, [Inlet-Adjacent Beach and Shoreline Variability at Decadal Scales](#), Shore and Beach Volume 92(2), Spring 2024, 3 (last visited Jan. 24, 2026).

² See Department of Environmental Protection, [Jupiter Inlet Management Plan](#), 1 (last visited Jan. 24, 2026); Jupiter Inlet District, [History](#) (last visited Jan. 24, 2026).

³ Department of Environmental Protection, [Jupiter Inlet Management Plan](#), 4 (last visited Jan. 24, 2026).

⁴ Ch. 8910, L.O.F. (1921); see also Jupiter Inlet District, [Jupiter Inlet District History](#), (last visited Jan. 24, 2026). The district’s charter was most recently recodified in 2023. See ch. 2023-331, L.O.F.

⁵ Ch. 2023-331, L.O.F.

STORAGE NAME: h1219b.SAC

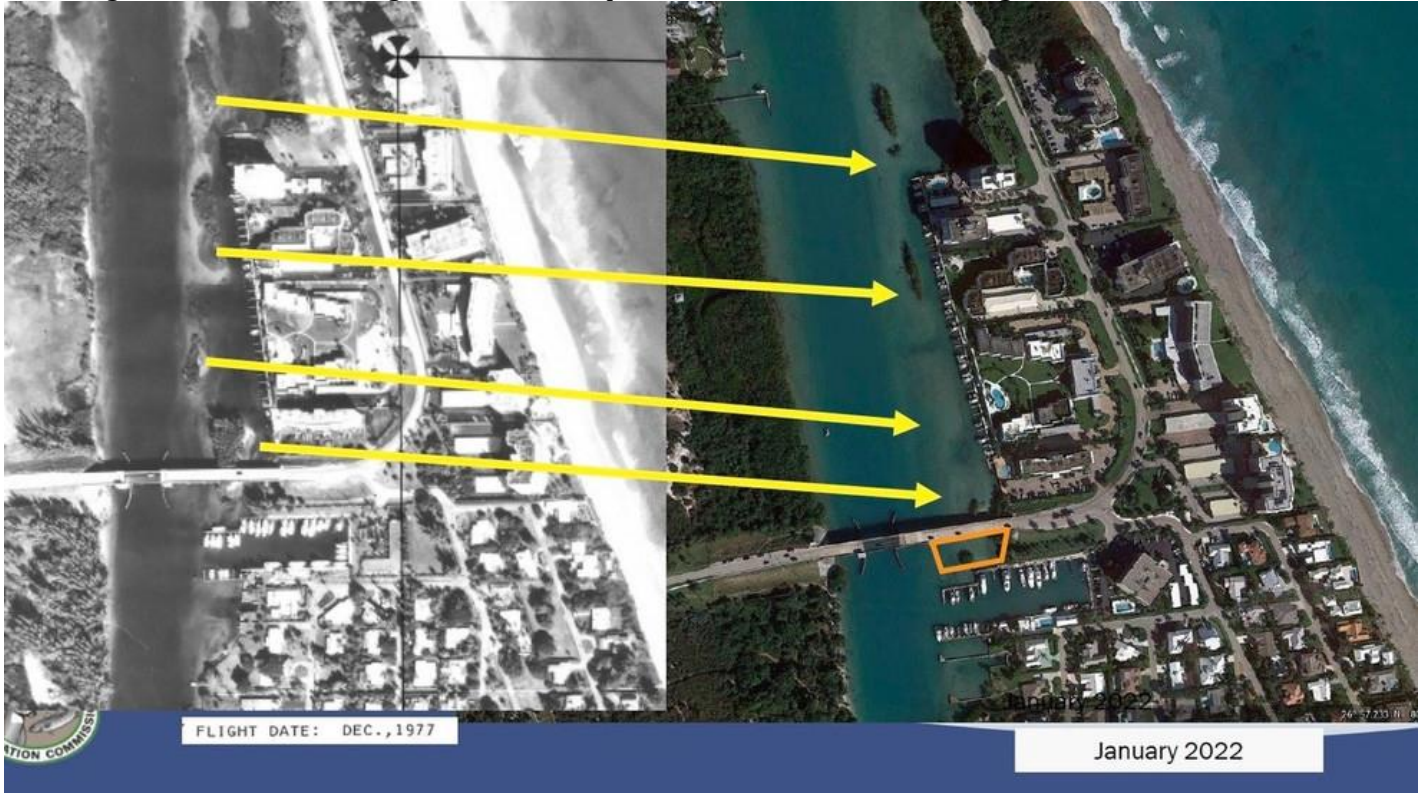
DATE: 2/6/2026

District also conducts shoreline preservation and dredging activities, constructs infrastructure (e.g., bridges, docks, roadways), and maintains the navigational channels in the Loxahatchee River and its tributaries.⁶ The District's board has five commissioners, who must be residents and electors of the District.⁷

SI3

SI3 is a spoil island near Cato's Bridge in the Village of Tequesta that is part of Florida's sovereign submerged lands.⁸ Spoil islands are man-made islands that often result from channel dredging.⁹ The dredged material, known as "spoil," is typically transported to uplands storage sites.¹⁰ However, the previous practice was to deposit these materials in piles along the edge of the channels, where they may eventually break the water's surface and become a spoil island.¹¹ Spoil islands can become valuable and distinct habitats, with diverse plants and animals.¹²

The image below shows the degradation of the spoil islands north of Cato's Bridge from 1977 to 2022.¹³



Andrew Red Harris

Andrew "Red" Harris was born and raised in the Town of Jupiter, Florida.¹⁴ In 2011, he earned a degree in risk management and insurance from Florida State University and started his own group insurance brokerage agency.¹⁵ Harris was also an avid outdoorsman and sportsman.¹⁶ Andrew Harris was tragically killed in a boating accident in

⁶*Id.*; see also Jupiter Inlet District, [Jupiter Inlet District](#) (last visited Jan. 24, 2026).

⁷*Id.*

⁸ Florida's sovereignty submerged lands include, but are not limited to, tidal lands, islands, sandbars, shallow banks and lands waterward of the ordinary or mean high water line, beneath navigable fresh water or beneath tidally influenced waters. See Department of Environmental Protection, [Submerged Lands Management](#) (last visited Jan. 24, 2026).

⁹ Friends of the Spoil Islands, [Spoil Island Project Home](#) (last visited Jan. 24, 2026).

¹⁰ *Id.*

¹¹ *Id.*

¹² University of Florida Institute of Food and Agricultural Sciences, [Spoil Islands](#) (last visited Jan. 24, 2026).

¹³ Jupiter Narrows Conservation Alliance, [Project Summary Multi-Year Budget](#), 1 (last visited Jan. 24, 2026).

¹⁴ Taylor & Modeen Funeral Home, [Obituary for Andrew "Red" Harris](#) (last visited Jan. 24, 2026).

¹⁵ *Id.*

¹⁶ *Id.*

2014.¹⁷ He is survived by his parents, his brother, and his sister. He is remembered as an extremely generous and caring son, brother, and friend.¹⁸

Andrew “Red” Harris Foundation

The Andrew “Red” Harris Foundation (Foundation), established in 2014, honors Andrew “Red” Harris and his love of fishing and diving.¹⁹ The Foundation focuses on building artificial reefs in Palm Beach County.²⁰ Since its creation, the Foundation has completed a number of projects, including building mile-long artificial reef trails offshore of the towns of Jupiter and Juno Beach and deployed 42 barge-loads of artificial reef material.²¹ The Foundation has also donated 15 seven-foot-tall artificial reef structures to the Blue Heron Bridge Snorkel Trail at Phil Foster Park in Riviera Beach, as well as a 17-foot-tall replica of the Jupiter Lighthouse, which is part of the Jupiter artificial reef trail.²² The Foundation is also the primary supporter of a project to restore three mangrove islands in the Jupiter Narrows area near the Village of Tequesta.²³

BILL HISTORY

COMMITTEE REFERENCE	ACTION	DATE	STAFF DIRECTOR/ POLICY CHIEF	ANALYSIS PREPARED BY
Natural Resources & Disasters Subcommittee	18 Y, 0 N, As CS	1/28/2026	Skinner	Jones
THE CHANGES ADOPTED BY THE COMMITTEE:	<ul style="list-style-type: none"> Clarified the waterbody being designated under the bill is a spoil island, rather than a shoal. Corrected the island’s identifier from S13 to SI3. Clarified that SI3 is a mangrove island adjacent to the Intercoastal Waterway within Jupiter Sound. 			
State Affairs Committee			Williamson	Jones

THIS BILL ANALYSIS HAS BEEN UPDATED TO INCORPORATE ALL OF THE CHANGES DESCRIBED ABOVE.

¹⁷ Reef Cells Engineered Marine Habitat, [Andrew “Red” Harris Memorial Reef](#) (last visited Jan. 24, 2026).

¹⁸ *Id.*

¹⁹ Andrew “Red” Harris Foundation, [History](#) (last visited Jan. 24, 2026). *See also* The Guy Harvey Foundation, [An Unexpected Expert](#) (last visited Jan. 24, 2026).

²⁰ Andrew “Red” Harris Foundation, [What We Do](#) (last visited Jan. 24, 2026).

²¹ *Id.*

²² *Id.*

²³ Andrew “Red” Harris Foundation, [Restoring the Mangroves Near Cato’s Bridge](#) (last visited Jan. 24, 2026).