

House Redistricting Subcommittee

Meeting Packet

Monday, October 17, 2011
1:15 PM
404 HOB

Committee Meeting Notice

HOUSE OF REPRESENTATIVES

House Redistricting Subcommittee

Start Date and Time: Monday, October 17, 2011 01:15 pm

End Date and Time: Monday, October 17, 2011 03:15 pm

Location: 404 HOB

Duration: 2.00 hrs

AGENDA:

Presentation and discussion of decision points and options for State House districts
Other Committee Business

NOTICE FINALIZED on 10/10/2011 14:26 by Crofoot.Katie

Florida House of Representatives

House Redistricting Subcommittee

Staff Presentation on Options for:

- **The State House Map**

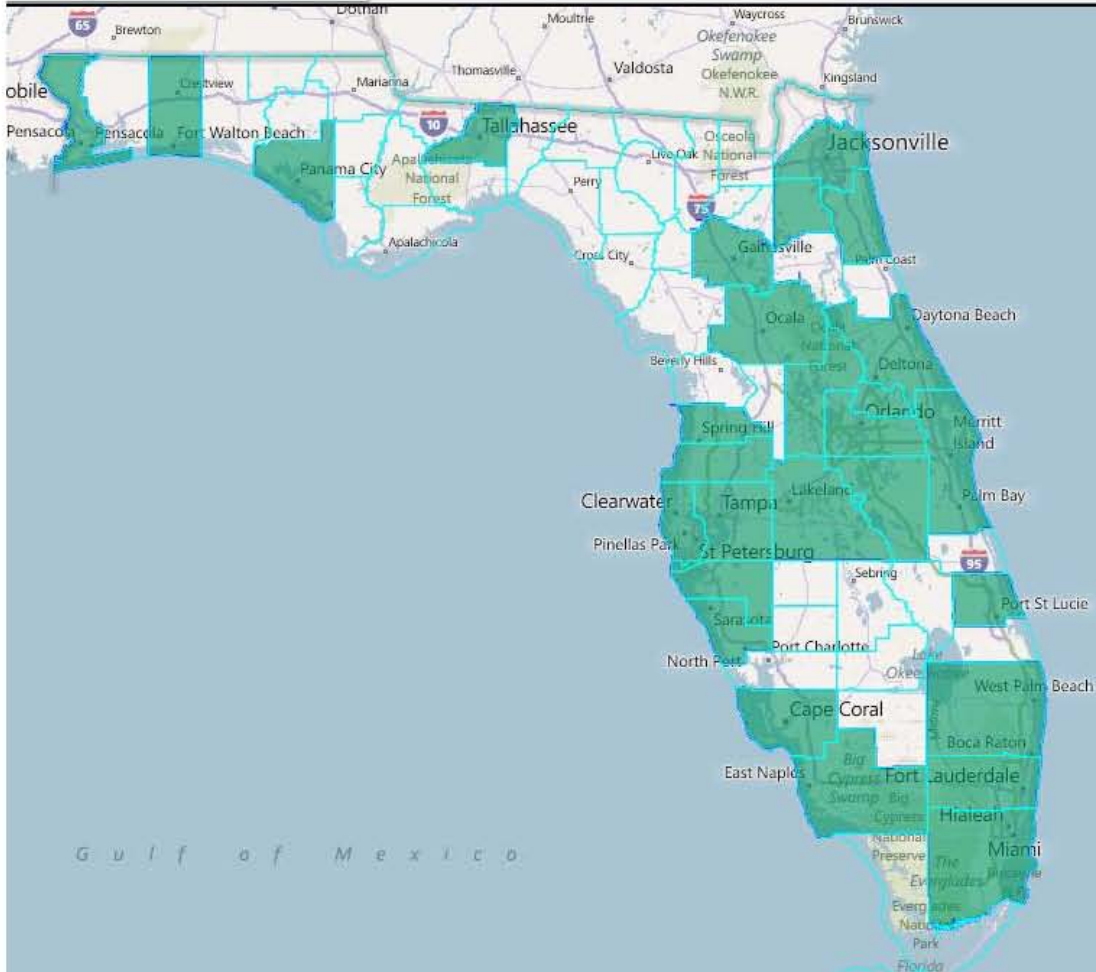
Regarding:

- **Options for major population centers;**
- **Tradeoffs between whole counties versus cross-jurisdictional communities; and**
- **Options for racial and language minority communities.**

Last Updated: Monday, October 17, 2011

Statewide

28 Counties must be split in the State House Map by virtue of population

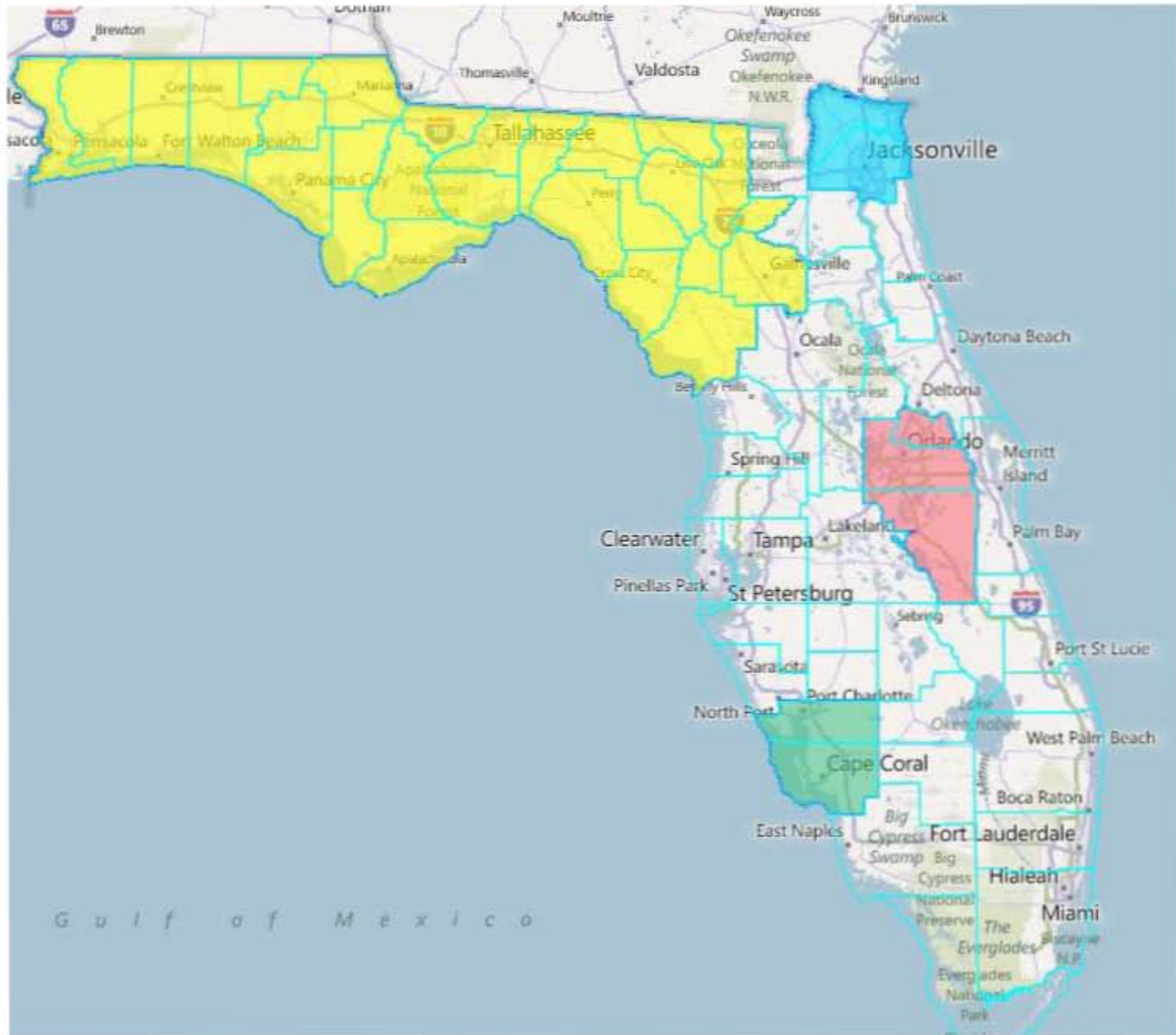


Policy Issues:

Counties that must be split by region are (the number next to each county represents the number of House districts each county's population creates):

- Northwest: Escambia (1.90) , Okaloosa (1.15), Bay (1.08) and Leon (1.76)
- Northeast and North Central: Duval (5.52), Clay (1.22), St. Johns (1.21), Alachua (1.58), Marion (2.11) and Volusia (3.16)
- Central: Lake (1.90), Seminole (2.70), Orange (7.31), Osceola (1.71), Polk (3.84), Brevard (3.47), Hernando (1.10) and Pasco (2.97)
- Southeast: St. Lucie (1.77), Palm Beach (8.43), Broward (11.16), Miami-Dade (15.93)
- Southwest: Hillsborough (7.85), Pinellas (5.85) , Manatee (2.06), Sarasota (2.42), Lee (3.95) and Collier (2.05)

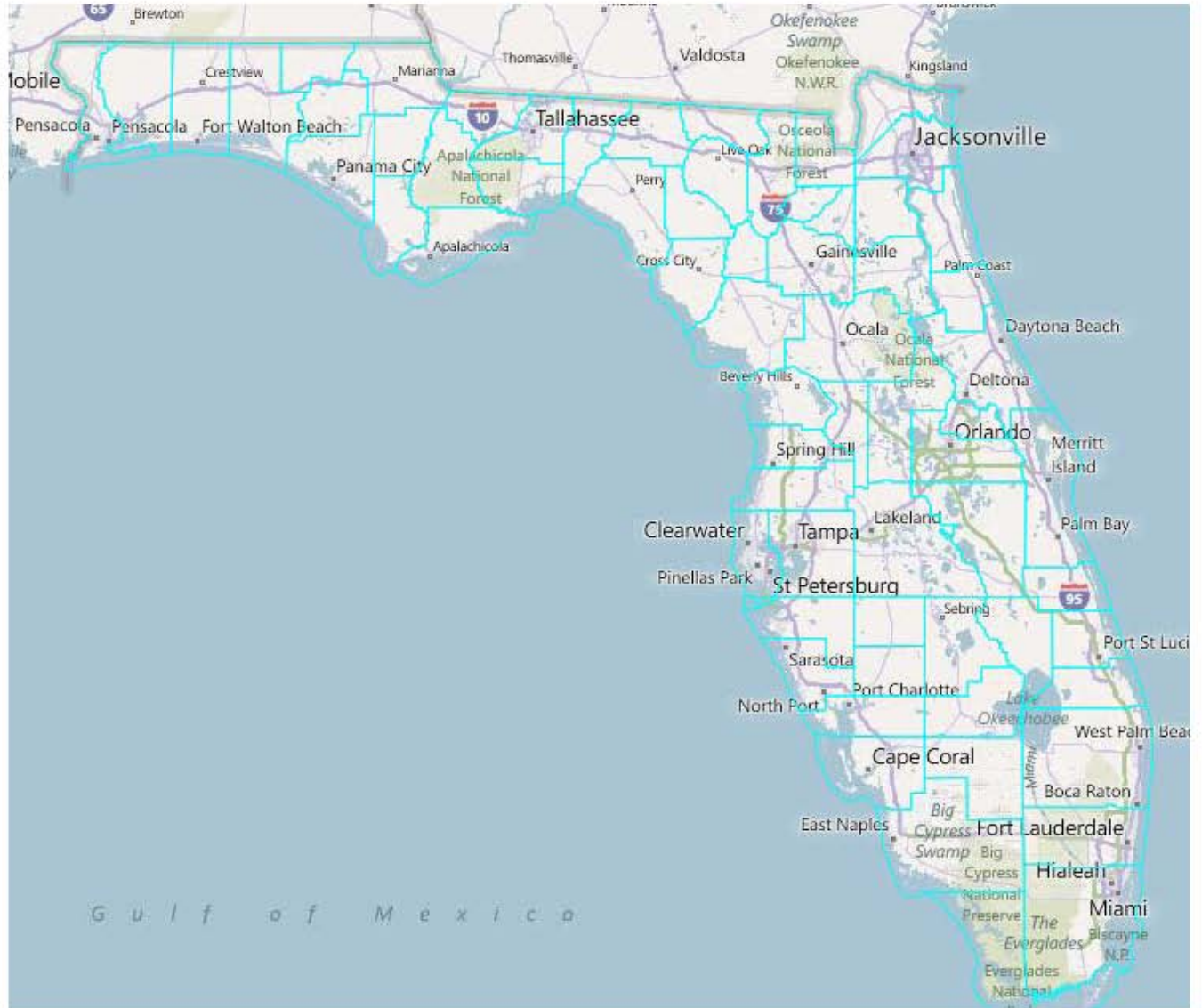
Potential Regional and Cross-Regional Groupings



Policy Issues:

- Northwest Region (Yellow): 11.98 House districts
- Northeast Region (Blue): 5.98 House districts
- Central Region (Pink):
 - Orange and Seminole Together: 10.01 House districts
 - Orange and Osceola Together: 9:03 House districts
- Southwest Region (Green): 4.97 House Districts

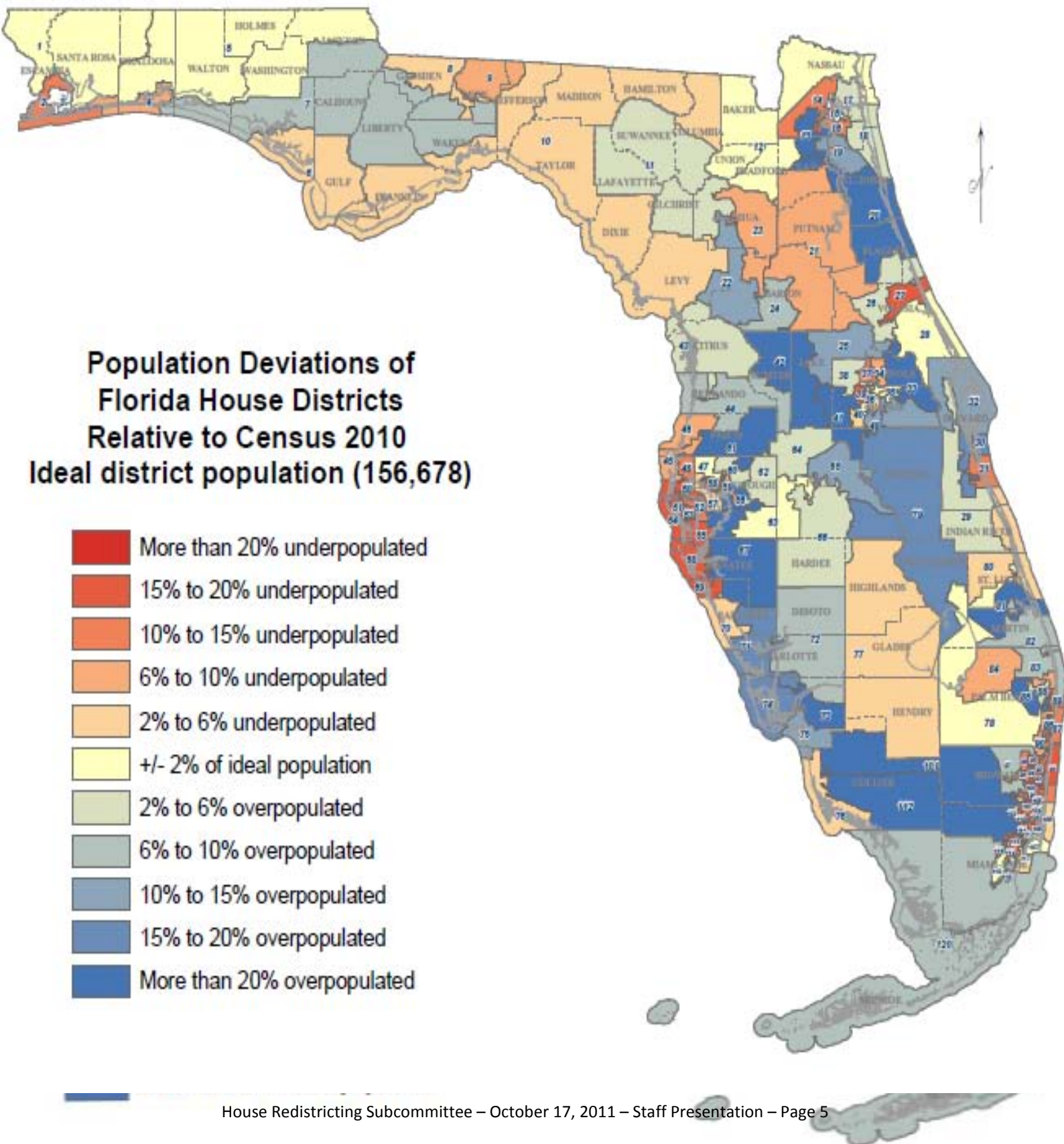
Nine Cities Must Be Split in the House Map



They are:

- Tallahassee
- Jacksonville
- Orlando
- Tampa
- St. Petersburg
- Port St. Lucie
- Fort Lauderdale
- Hialeah
- Miami

Regional Population Shifts Based on Existing House Districts



Overpopulated House districts are in:

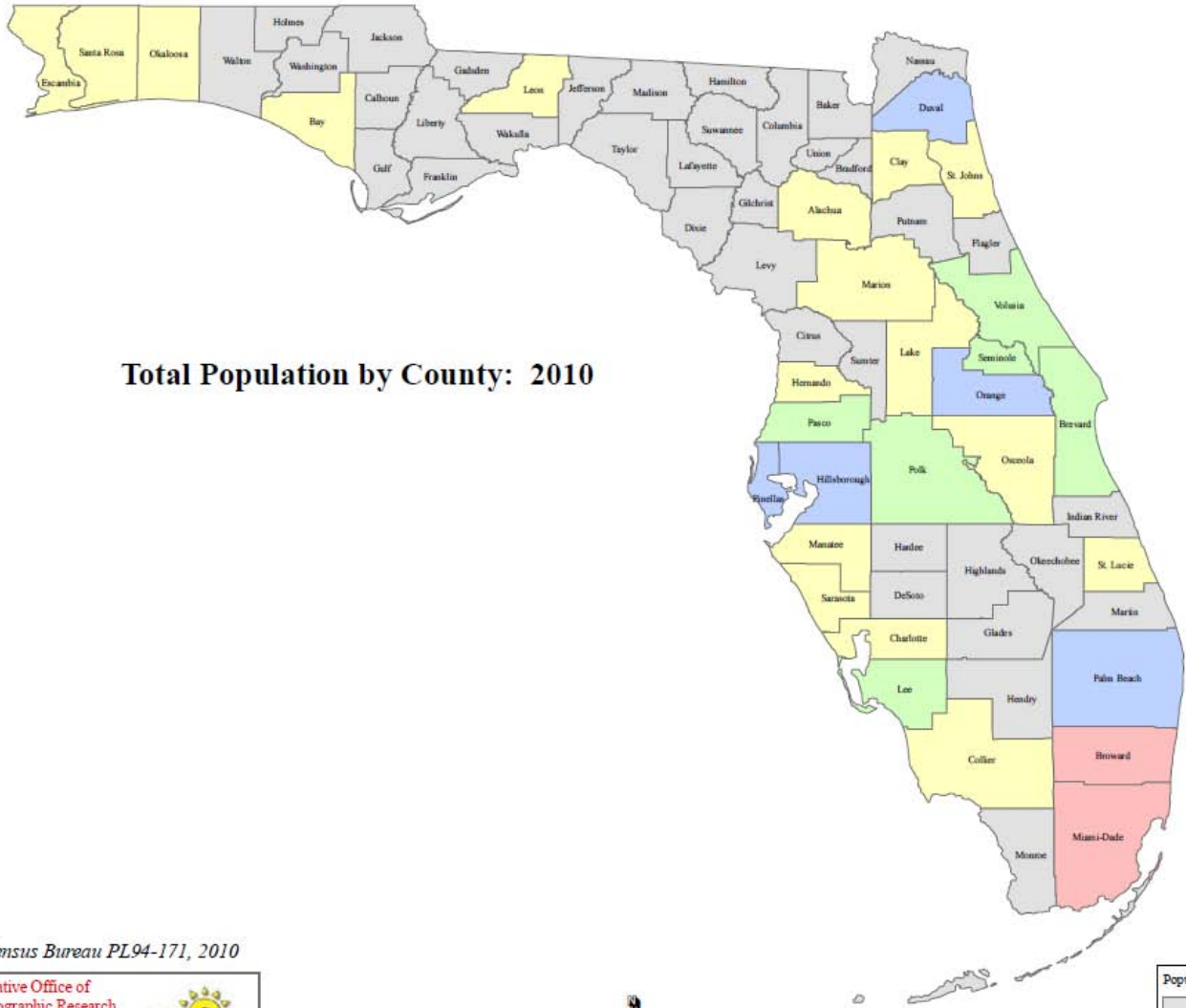
- Central Florida
- Southwest Florida
- Areas Outside of Tampa Bay

Underpopulated House districts are in:

- Northwest Florida
- North Central Florida
- Coastal Communities of Palm Beach, Broward and Miami-Dade Counties



Florida's Most Populated Counties are:



Total Population by County: 2010

Source: U.S. Census Bureau PL94-171, 2010

Florida Legislative Office of
Economic & Demographic Research
111 W. Madison St. Rm 574
Tallahassee, FL 32399-1400
Phone 850.487.1402
URL: www.edr.state.fl.us
March 17, 2011



Population Change	
8,365 - 146,318	(Grey)
146,319 - 379,448	(Yellow)
379,449 - 618,754	(Light Green)
618,755 - 1,320,134	(Blue)
1,320,135 - 2,496,435	(Dark Red/Pink)

- Miami-Dade
- Broward
- Palm Beach
- Hillsborough
- Orange
- Pinellas
- Duval

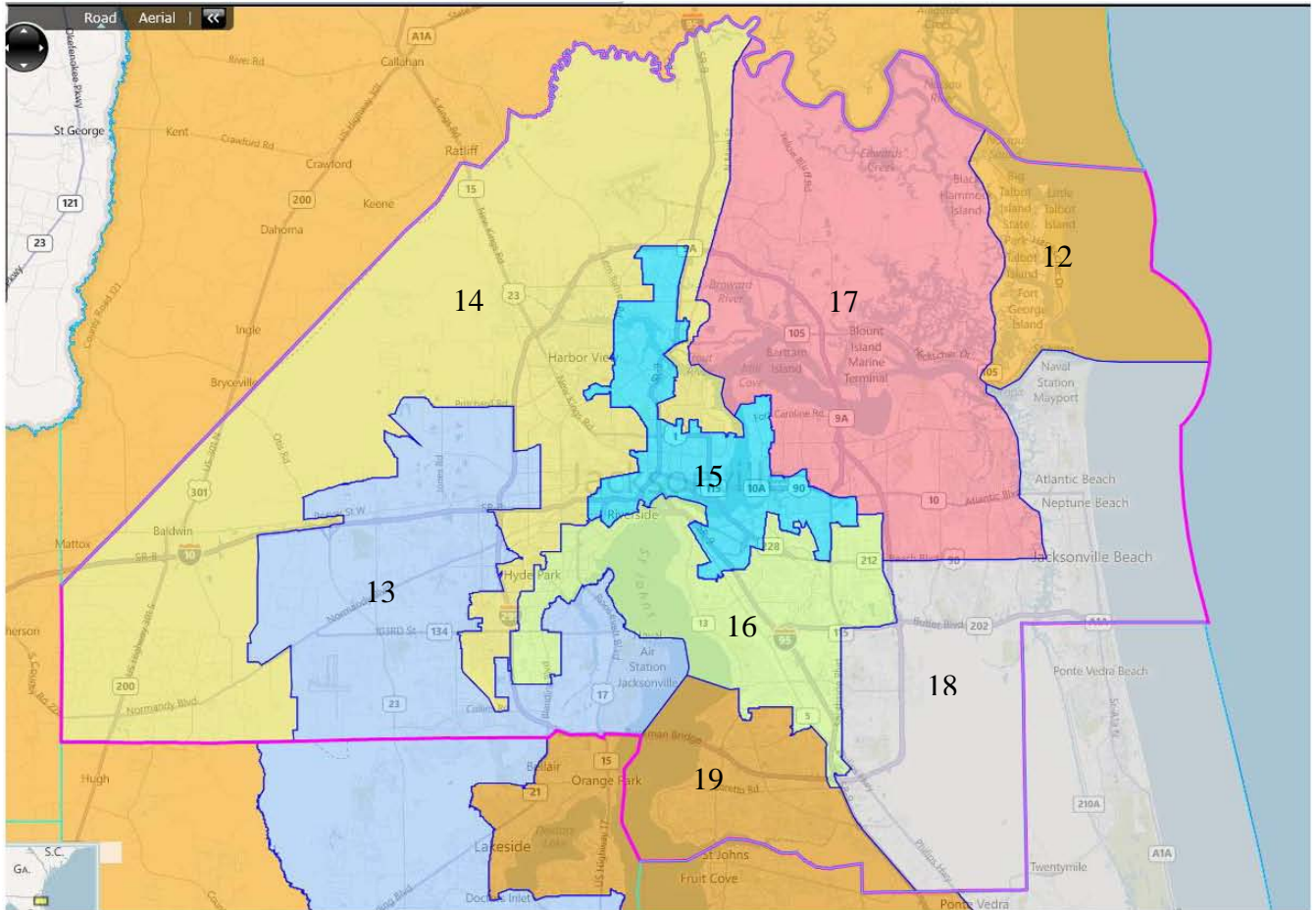
Source: U.S. Census Bureau PL94-171, 2010

Florida Legislative Office of
Economic & Demographic Research
111 W. Madison St. Rm 574
Tallahassee, FL 32399-1400
Phone 850.487.1402
URL: www.edr.state.fl.us
March 17, 2011



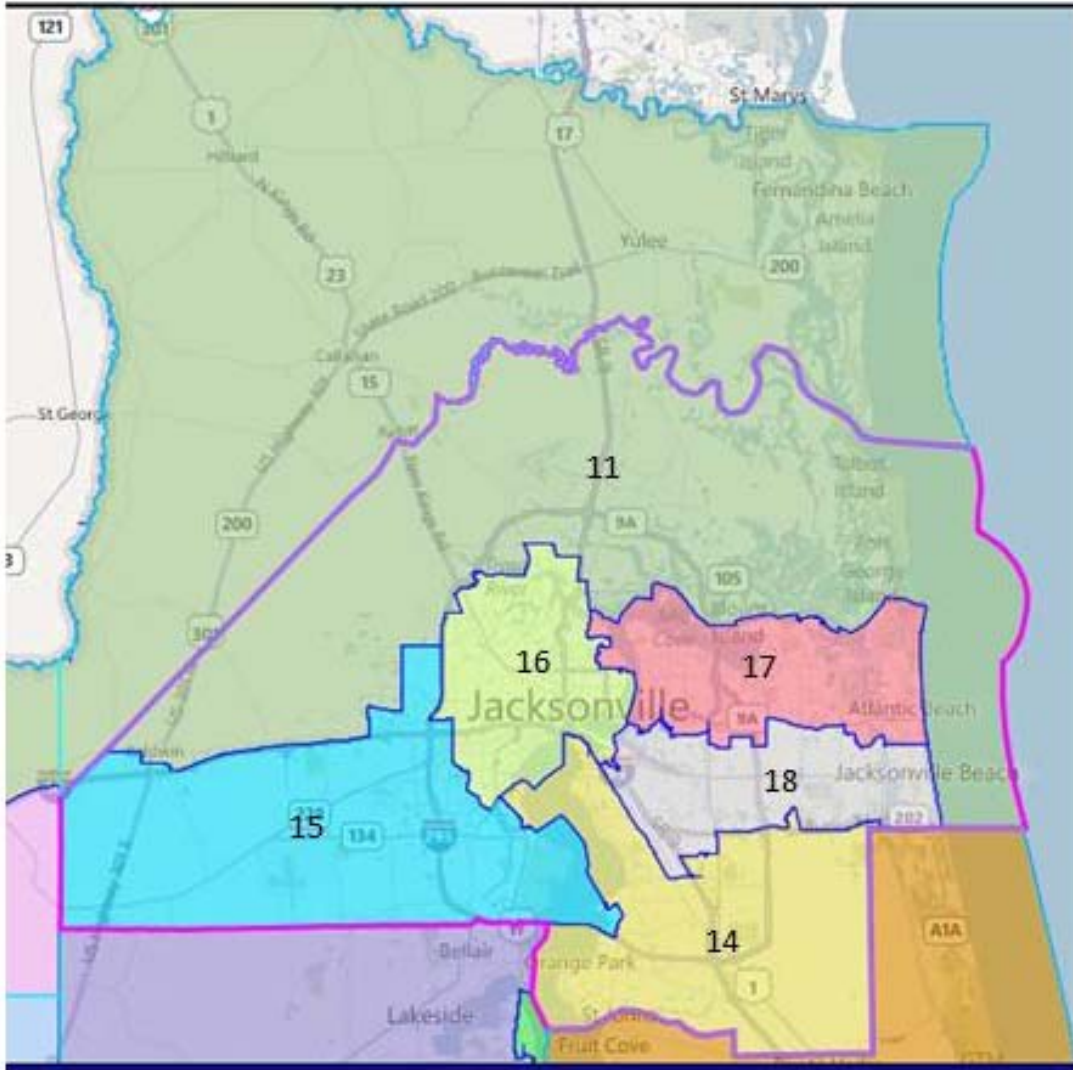
Duval County

Current State House Map (2002)



The populations of the counties neighboring Duval County are:

- Nassau County 73,314
- Baker County 27,115
- Clay County 190,865
- St. Johns County 190,039



- House District 11:
 - Population Deviation: -721 or -.46%
 - Black VAP: 19.71%
 - Hispanic VAP: 3.5%

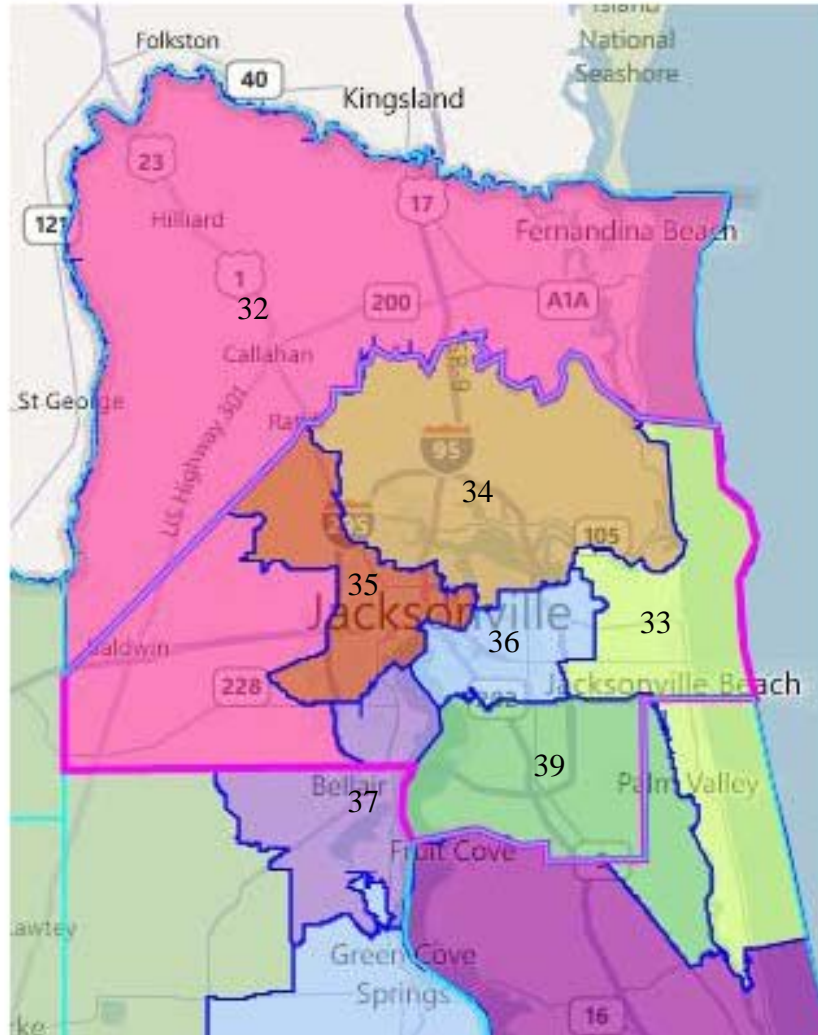
- House District 14:
 - Population Deviation: 279 or .18%
 - Black VAP: 11.35%
 - Hispanic VAP: 7.52%

- House District 15:
 - Population Deviation: -206 or -.13%
 - Black VAP: 28.92%
 - Hispanic VAP: 7.98

- House District 16:
 - Population Deviation: 333 or .21%
 - Black VAP: 61.24%
 - Hispanic VAP: 2.86%

- House District 17:
 - Population Deviation: 245 or .16%
 - Black VAP: 23.01%
 - Hispanic VAP: 7.64%

- House District 18:
 - Population Deviation: 469 or .30%
 - Black VAP: 12.77%
 - Hispanic VAP: 9.51%



- House District 32:
 - Population Deviation: 1681 or 1.07%
 - Black VAP: 15.36%
 - Hispanic VAP: 5.01%
- House District 33:
 - Population Deviation -583 or -.37%
 - Black VAP: 8.32%
 - Hispanic VAP: 6.22%

- House District 34:
 - Population Deviation: -4422 or -2.82%
 - Black VAP: 47.48%
 - Hispanic VAP: 4.65%

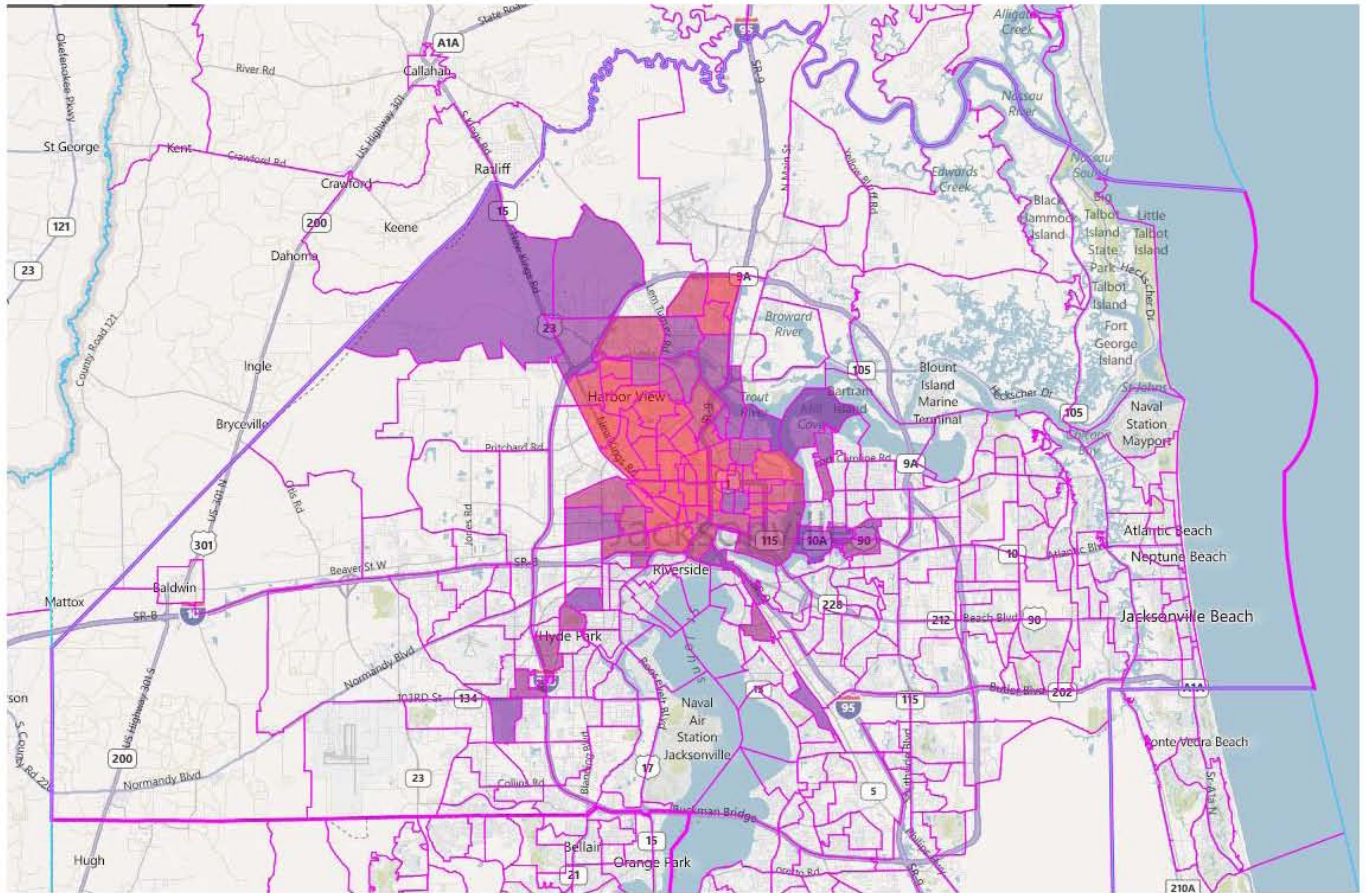
- House District 35:
 - Population Deviation: 862 or .55%
 - Black VAP: 50.56%
 - Hispanic VAP: 4.2%

- House District 36:
 - Population Deviation: 319 or .2%
 - Black VAP: 20.07%
 - Hispanic VAP: 10.05%

- House District 37:
 - Population Deviation: 1778 or 1.13%
 - Black VAP: 15.95%
 - Hispanic VAP: 8.47%

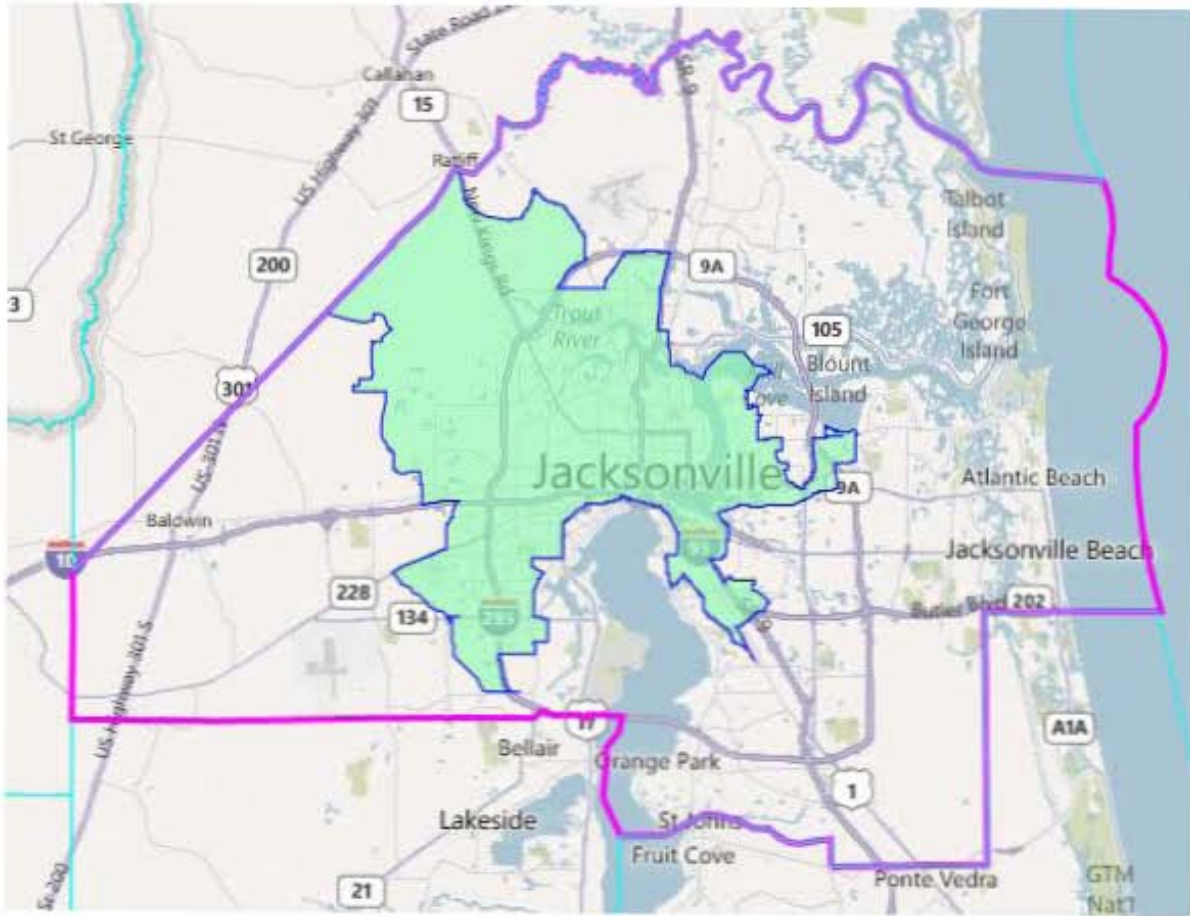
- House District 39:
 - Population Deviation: -4822 or -3.08%
 - Black VAP: 10.74%
 - Hispanic VAP: 7.65%

Duval County currently has two majority-minority Black districts (Districts 14 and 15). Below is a map of Duval County with all VTDs with a Black VAP percentage of 40 or greater.



The total population for the VTDs highlighted above is 189,262, which is well over the population for a House district.

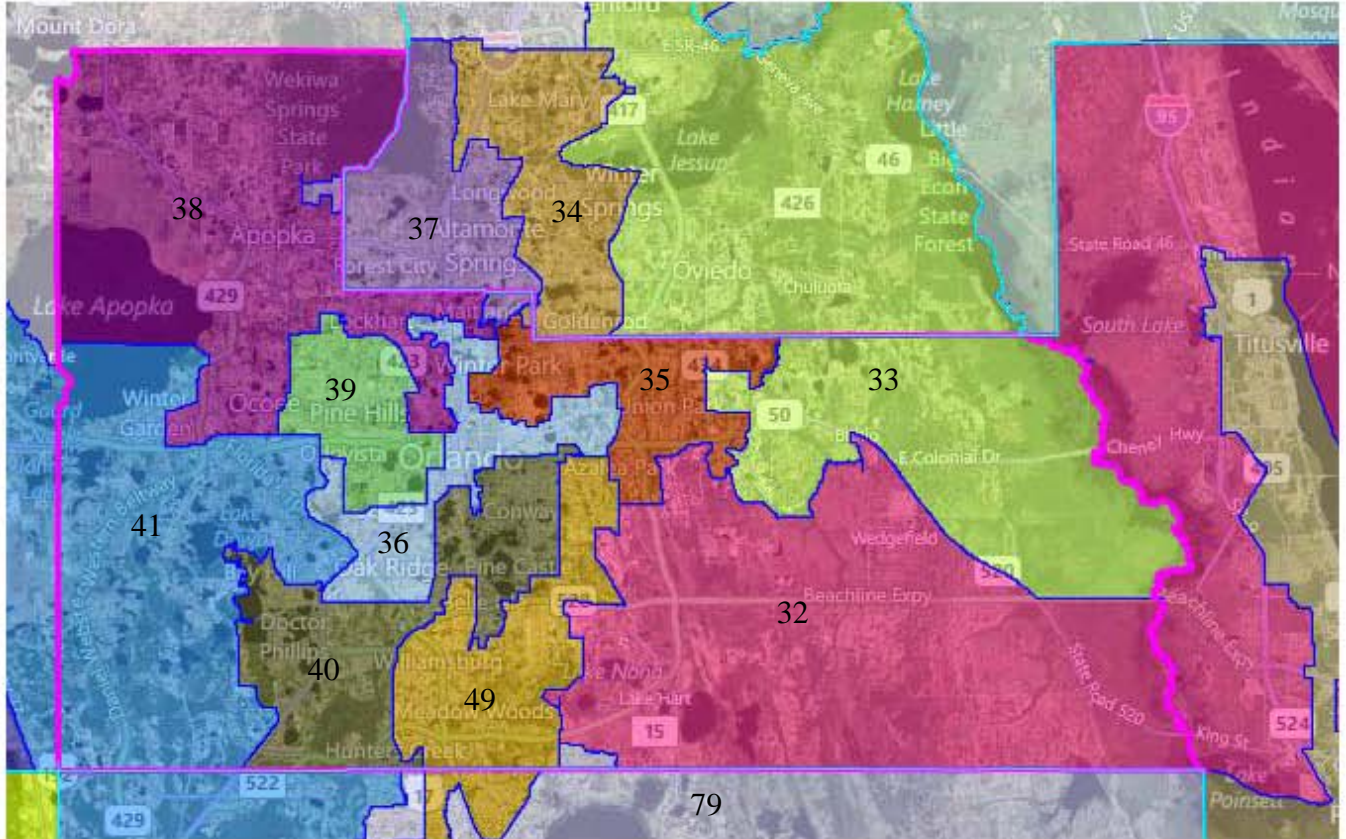
The map below creates one district, which is actually just over twice the population needed for an ideal population.



The district shown above, which is 77 people over the ideal population for two House districts, has a Black VAP of 52%.

Orange County

Current State House Map (2002)

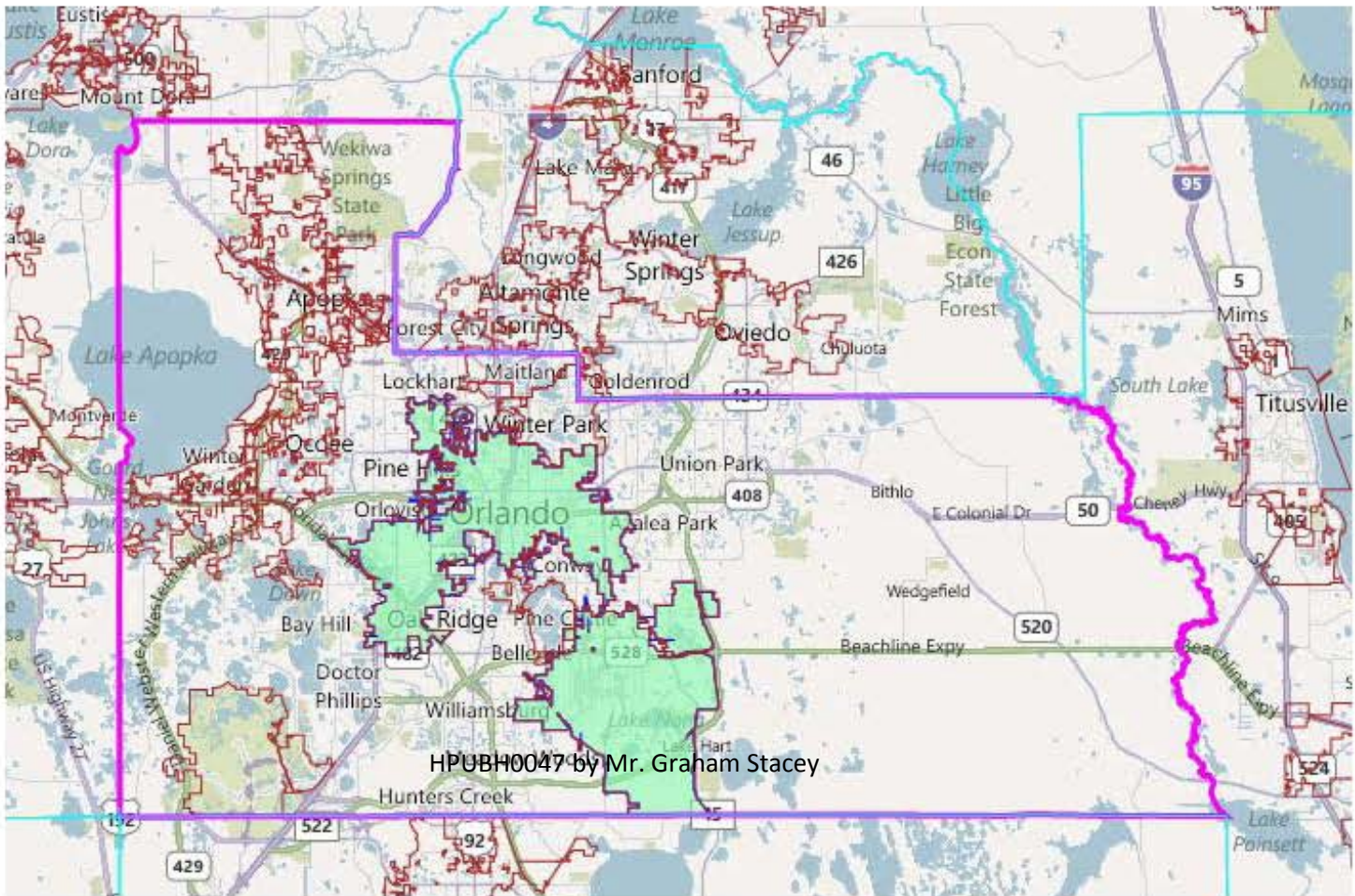


Currently, Orange County has a population of 1,145,956, which is enough for roughly 7.3 House districts, depending on how many county splits you have. Thinking that at least one district will need to share portions of Orange County with a neighboring county, it is important that all of these counties be viewed from the regional perspective.

The populations of the counties neighboring Orange County are:

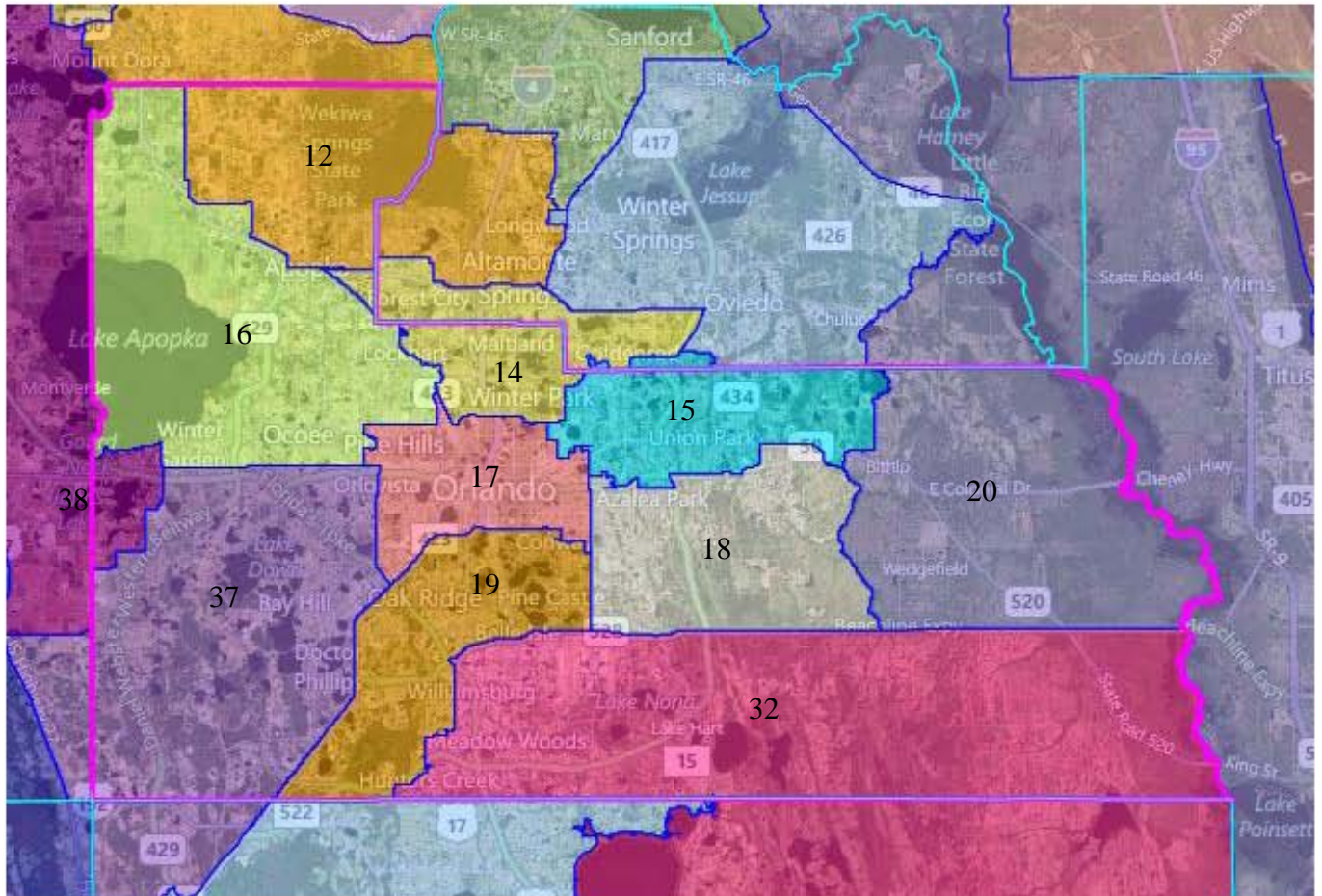
- Brevard County 543,376
- Volusia County 494,593
- Seminole County 422,718
- Lake County 297,052
- Polk County 602,095
- Osceola County 268,685

The City of Orlando



Policy Issues:

- The population of the City of Orlando is too large for the ideal population of a House district and must be split.



- House District 12:
 - Population Deviation: 4 or .002%
 - Black VAP: 9.36%
 - Hispanic VAP: 14.79%
- House District 14:
 - Population Deviation: 14 or .008%
 - Black VAP: 12.19%
 - Hispanic VAP: 16.82%

- House District 15:
 - Population Deviation 11 or .006%
 - Black VAP: 10.73%
 - Hispanic VAP: 28.19%

- House District 16:
 - Population Deviation: -15 or -.01%
 - Black VAP: 40.9%
 - Hispanic VAP: 17.16%

- House District 17:
 - Population Deviation: -13 or -.009%
 - Black VAP: 34.24%
 - Hispanic VAP: 15.77%

- House District 18:
 - Population Deviation: 23 or .014%
 - Black VAP: 11.66%
 - Hispanic VAP: 40.21%

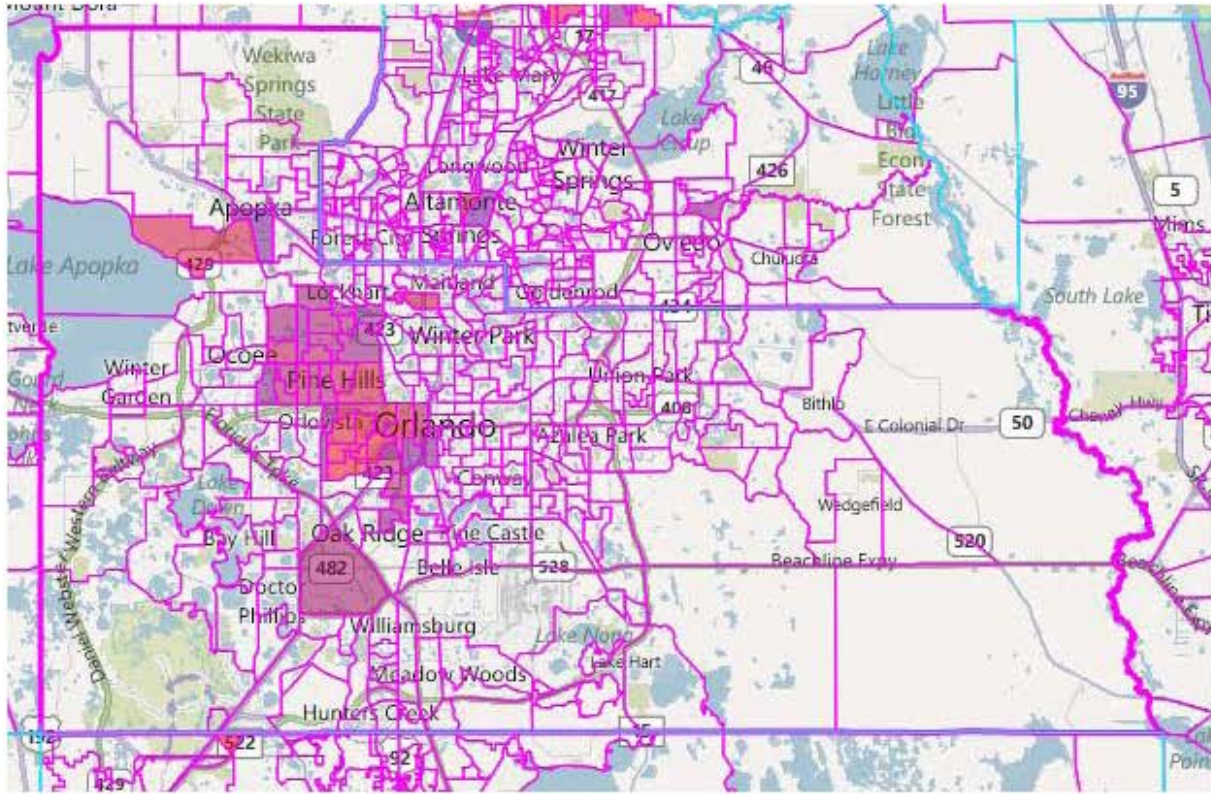
- House District 19:
 - Population Deviation: -2 or -.002%
 - Black VAP: 21.23%
 - Hispanic VAP: 29.59%

- House District 20:
 - Population Deviation: -9 or -.006%
 - Black VAP: 9.68%
 - Hispanic VAP: 6.64%

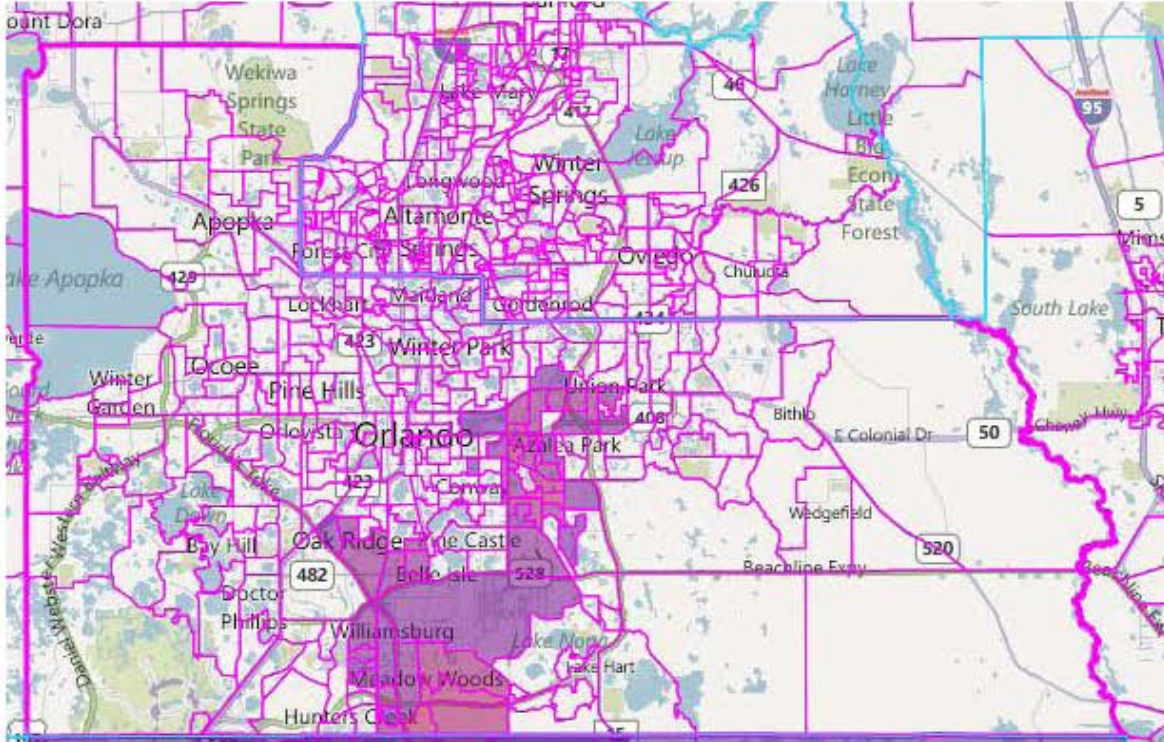
- House District 32:
 - Population Deviation: -5 or -.004%
 - Black VAP: 9.92%
 - Hispanic VAP: 36.45%

- House District 37:
 - Population Deviation: 38 or .024%
 - Black VAP: 12.75%
 - Hispanic VAP: 17.65%

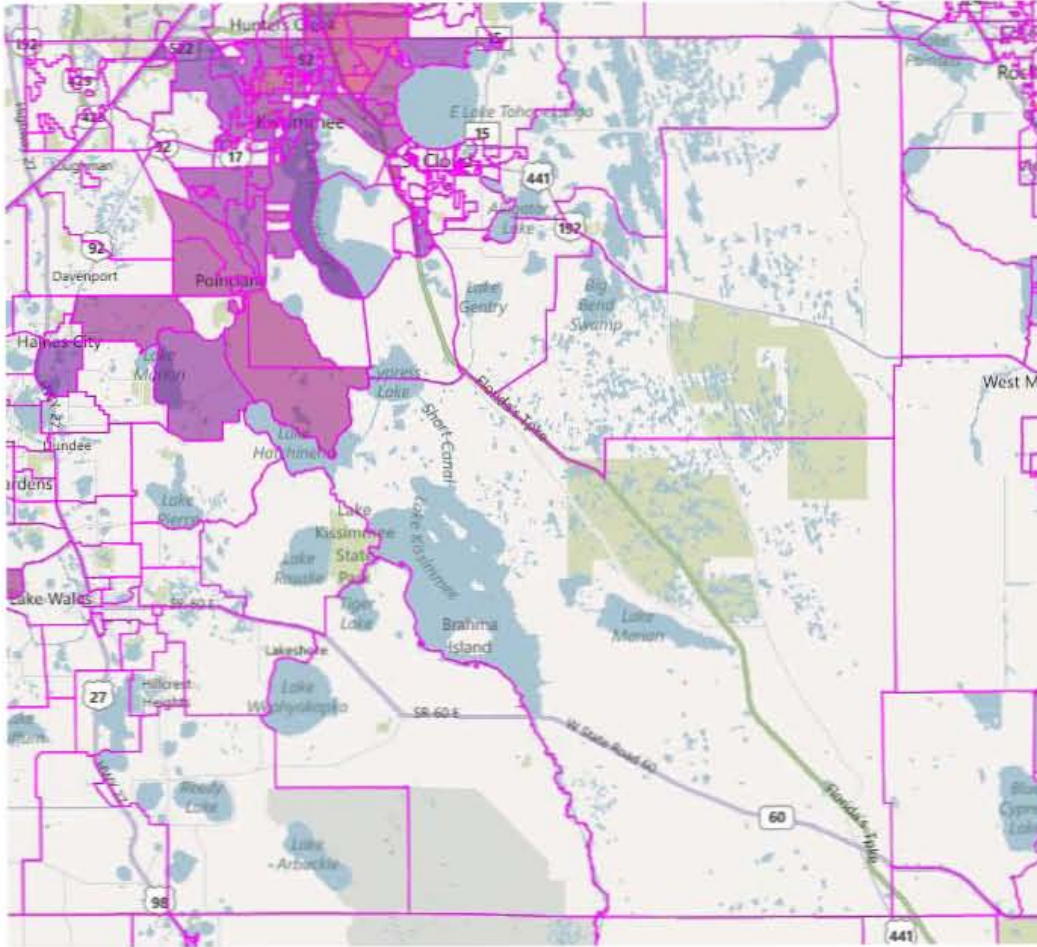
Currently, Orange County has one majority-minority Black district (District 39). The map below illustrates the VTDs that have a Black Voting Age Population above 40%.



According to the 2010 Census, Orange County has a Hispanic Voting Age Population of 220,285, which is over the ideal population of a House district. The map below illustrates the VTDs that have a Hispanic Voting Age Population of 40% or greater.

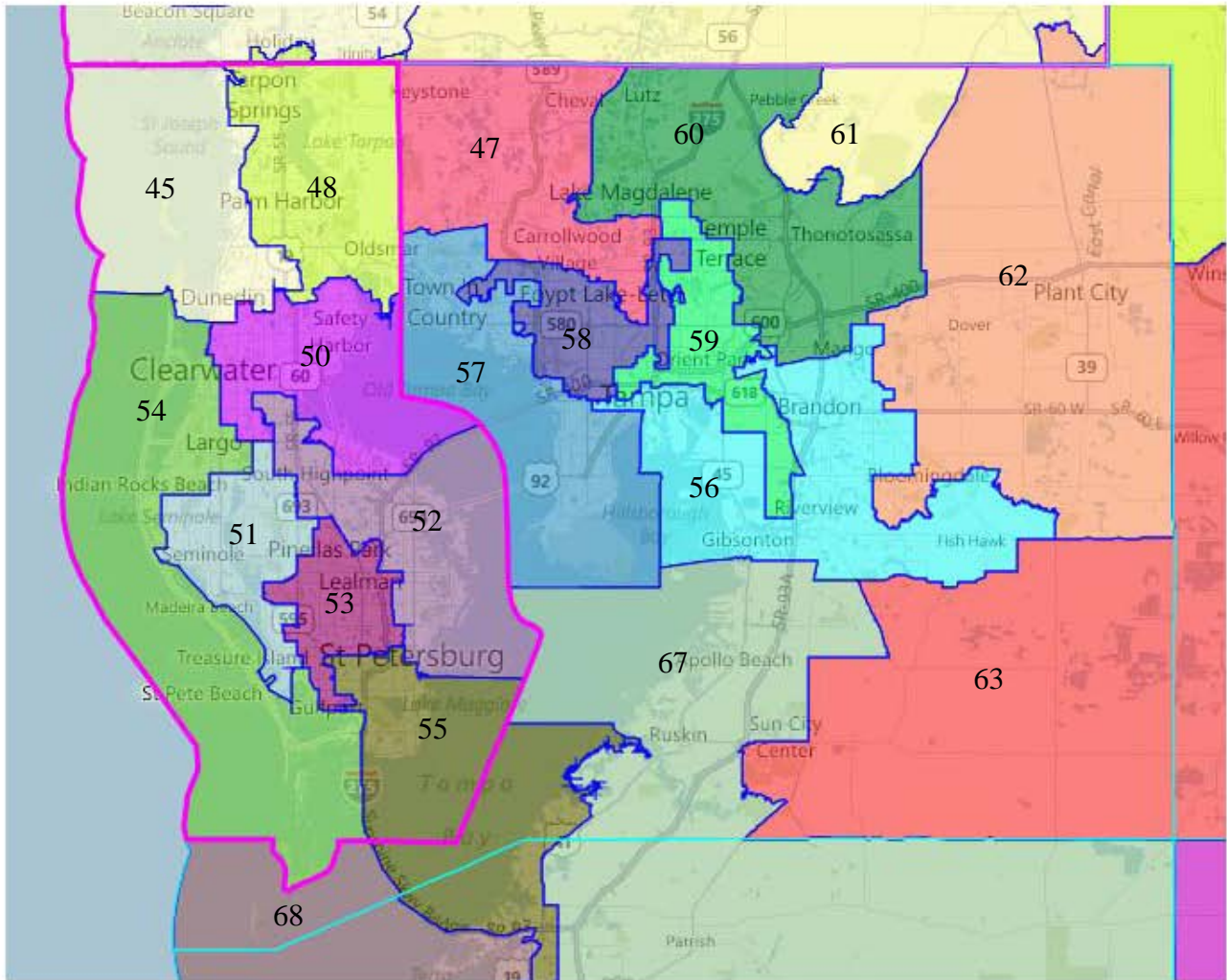


Currently, a House district that crosses into both Orange and Osceola Counties traditionally elects a Hispanic. According to the 2010 Census, Osceola County has a Hispanic Voting Age Population of 84,875, which is over half of the ideal population for a House district. The map below illustrates the VTDs in Osceola County that have a Hispanic VAP of 40% or greater:



Hillsborough and Pinellas Counties

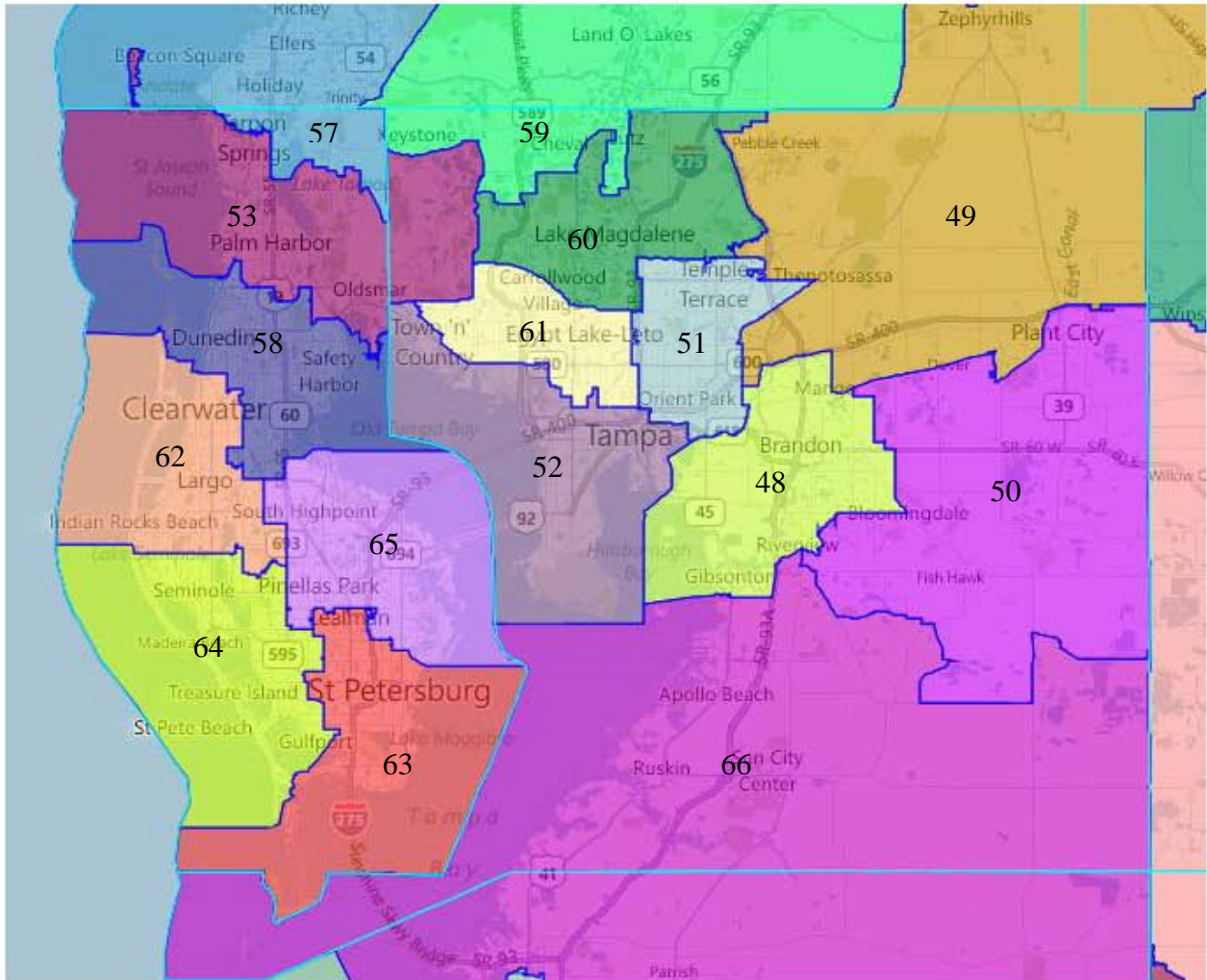
Current State House Map (2002)



Currently, Hillsborough County has a population of 1,229,226, which is the population for 7.85 districts and Pinellas County has a population of 916,542, which is the population for 5.85 districts, depending on how many splits each county would have.

The populations of the counties neighboring the Tampa Bay area are:

- Pasco County 464,697
- Polk County 602,095
- Manatee County 322,833



- House District 48:
 - Population Deviation: -1513 or -.97%
 - Black VAP: 19.1%
 - Hispanic VAP: 21.39%

- House District 49:
 - Population Deviation: -4978 or -3.18%
 - Black VAP: 9.03%
 - Hispanic VAP: 13.86%

- House District 50:
 - Population Deviation: 410 or .26%
 - Black VAP: 9.93%
 - Hispanic VAP: 17.36%

- House District 51:
 - Population Deviation: 1494 or .95%
 - Black VAP: 43.27%
 - Hispanic VAP: 18.26%

- House District 52:
 - Population Deviation: 2115 or 1.35%
 - Black VAP: 12.5%
 - Hispanic VAP: 19.68%

- House District 53:
 - Population Deviation: 462 or .29%
 - Black VAP: 3.55%
 - Hispanic VAP: 7.33%

- House District 57:
 - Population Deviation: 5126 or 3.27%
 - Black VAP: 2.56%
 - Hispanic VAP: 7.44%

- House District 58:
 - Population Deviation: 86 or .05%
 - Black VAP: 4.49%
 - Hispanic VAP: 8.28%

- House District 59:
 - Population Deviation: 4956 or 3.16%
 - Black VAP: 7.56%
 - Hispanic VAP: 15.4%

- House District 60:
 - Population Deviation: 993 or .63%
 - Black VAP: 11.92%
 - Hispanic VAP: 20.11%

- House District 61:
 - Population Deviation: 3191 or 2.04%
 - Black VAP: 12.54%
 - Hispanic VAP: 47.94%

- House District 62:
 - Population Deviation: 167 or .11%
 - Black VAP: 7.76%
 - Hispanic VAP: 7.3%

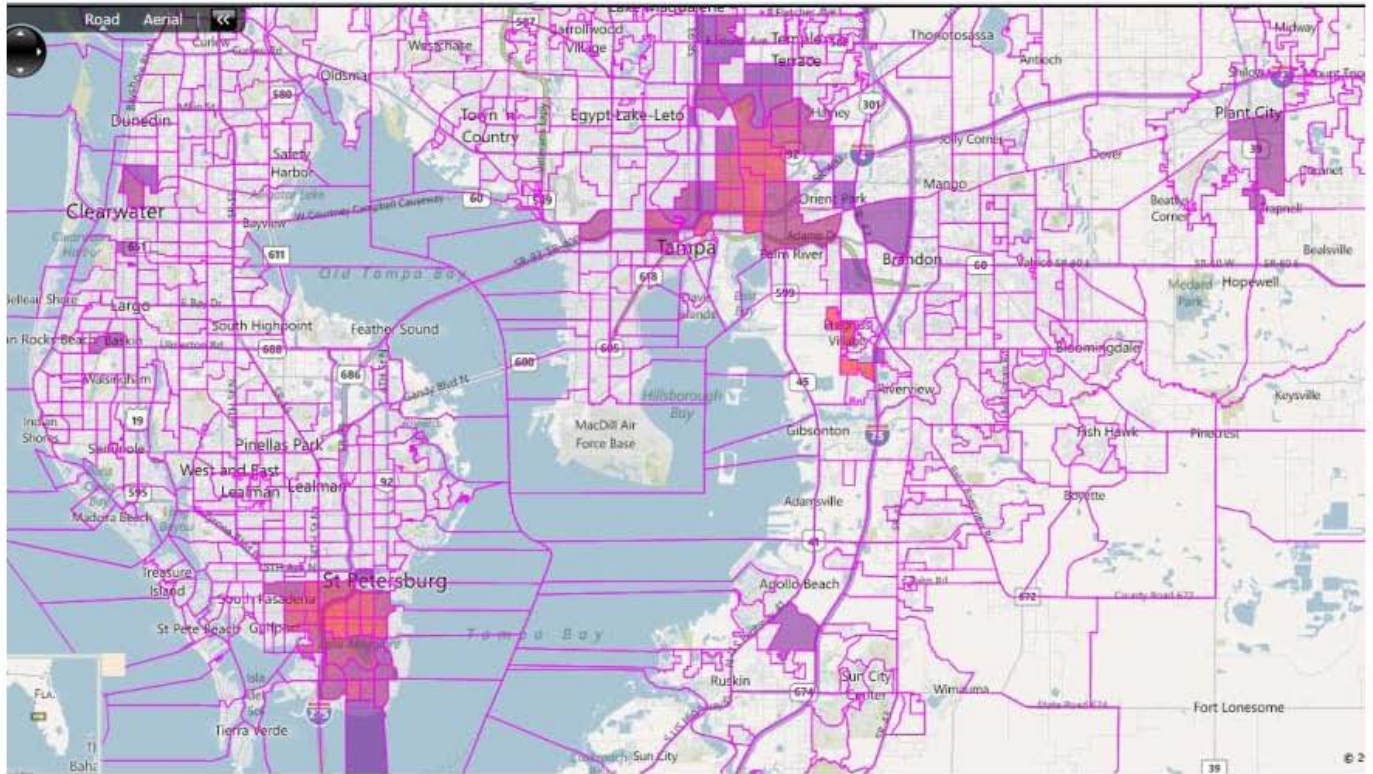
- House District 63:
 - Population Deviation: -665 or -.43%
 - Black VAP: 31.49%
 - Hispanic VAP: 5.58%

- House District 64:
 - Population Deviation: 458 or .29%
 - Black VAP: 2.73%
 - Hispanic VAP: 5.06%

- House District 65:
 - Population Deviation: 181 or .12%
 - Black VAP: 6.45%
 - Hispanic VAP: 8.52%

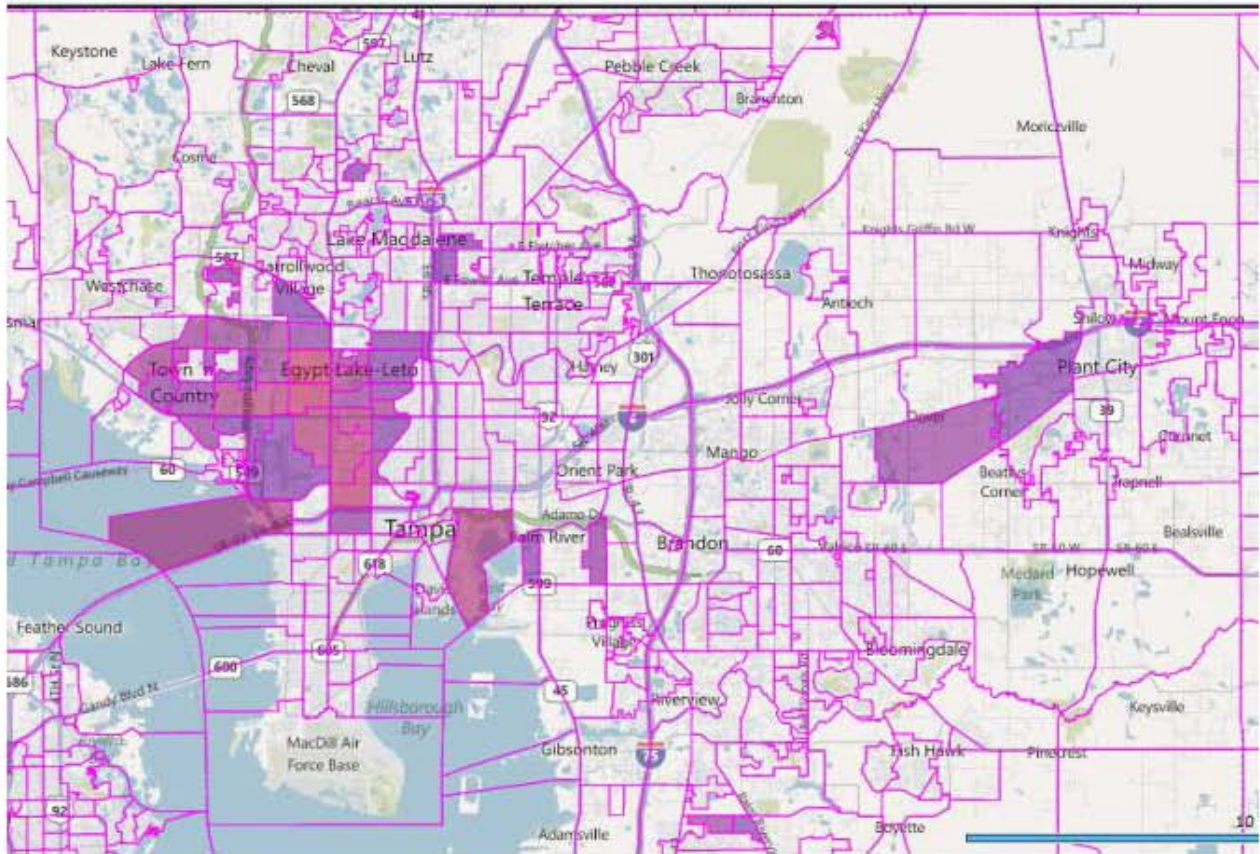
- House District 66:
 - Population Deviation: -893 or -.57%
 - Black VAP: 8.88%
 - Hispanic VAP: 17.87%

The Tampa Bay region has two districts that were majority-minority Black districts in 2002 (District 55 and 59). The map below illustrates the VTDs that have a Black Voting Age Population above 40%.



The total population of the VTDs shaded above is 195,706 which are above the ideal population for a House district and the Black VAP of those VTDs is 63%.

Currently, Hillsborough County also has a district that was a Hispanic-access district at 38% VAP when it was built in 2002. Below is map of the VTDs that have a Hispanic VAP of 40% or greater.

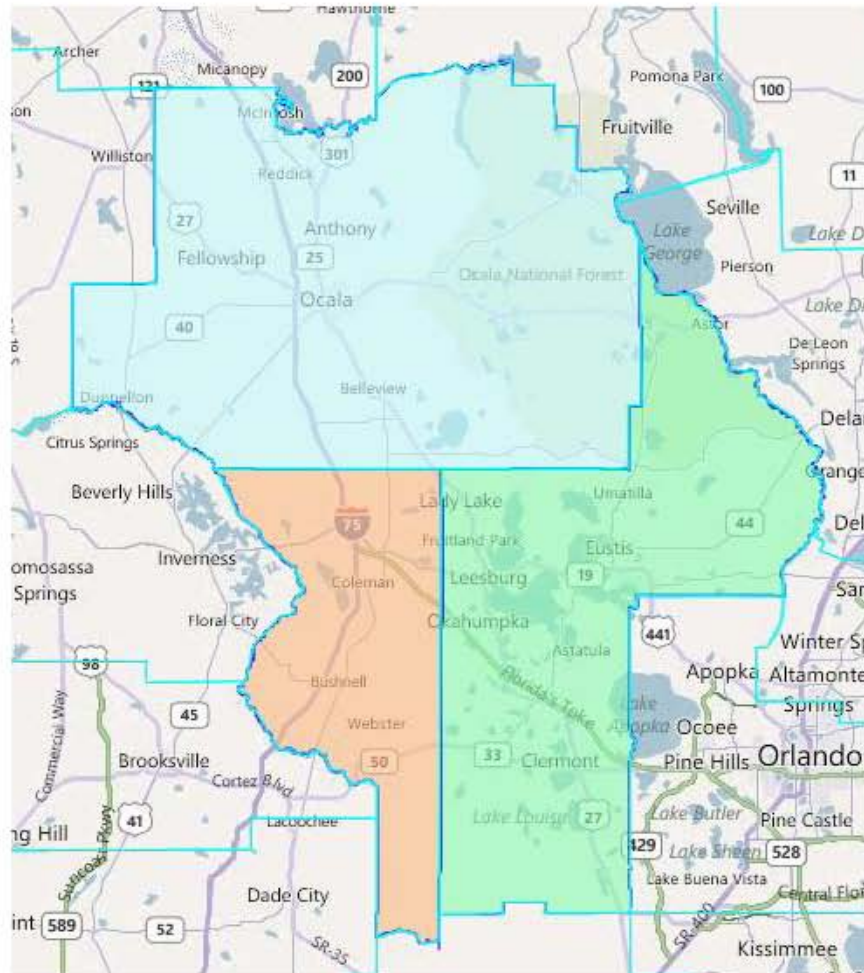


The total population of the VTDs shaded above is 165,228 which are over the ideal population of a House district. The Hispanic VAP for those VTDs is 53%.

Tradeoffs Between Whole Counties Versus Cross-Jurisdictional Communities

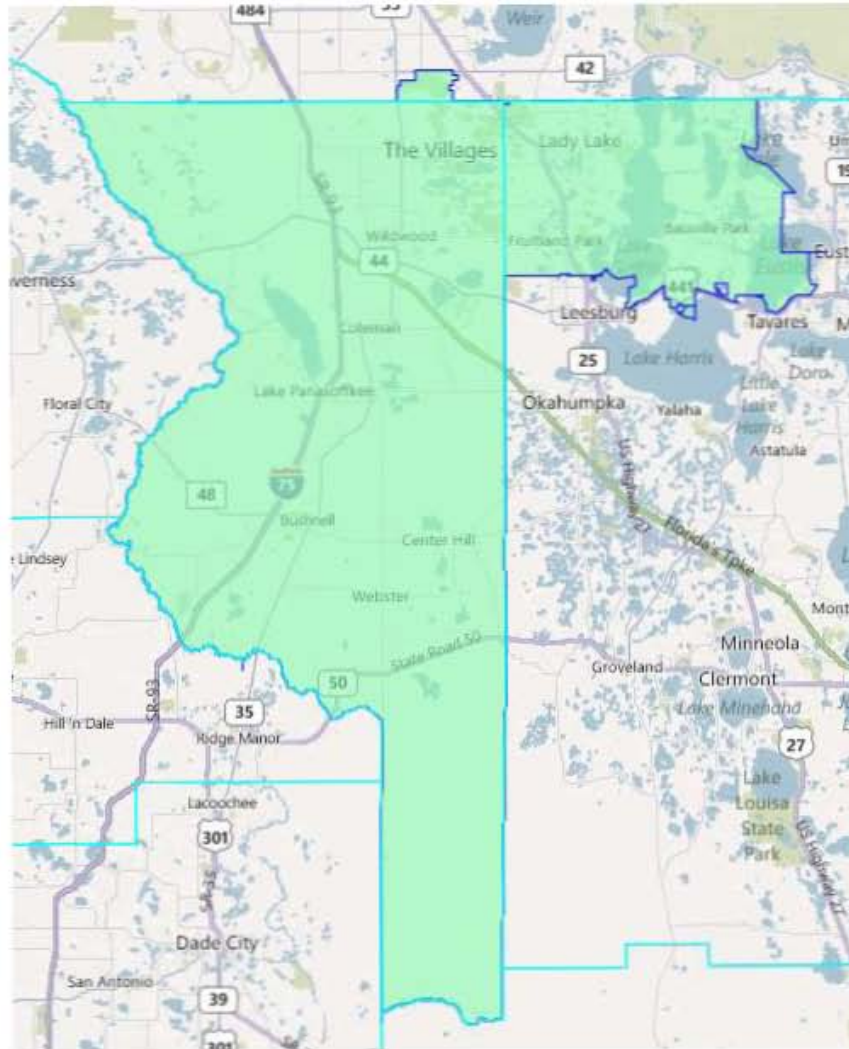
Example 1: The Villages

Lake, Sumter and Marion Counties look like this:



Policy Issues:

- Lake County's population is enough for 1.90 House districts and could not be able to be kept whole in a House plan
- Sumter County's is enough for .6 House districts, and could be kept whole in a House plan
- Marion County's population is enough for 2.11 House districts and could not be able to be kept whole in a House plan



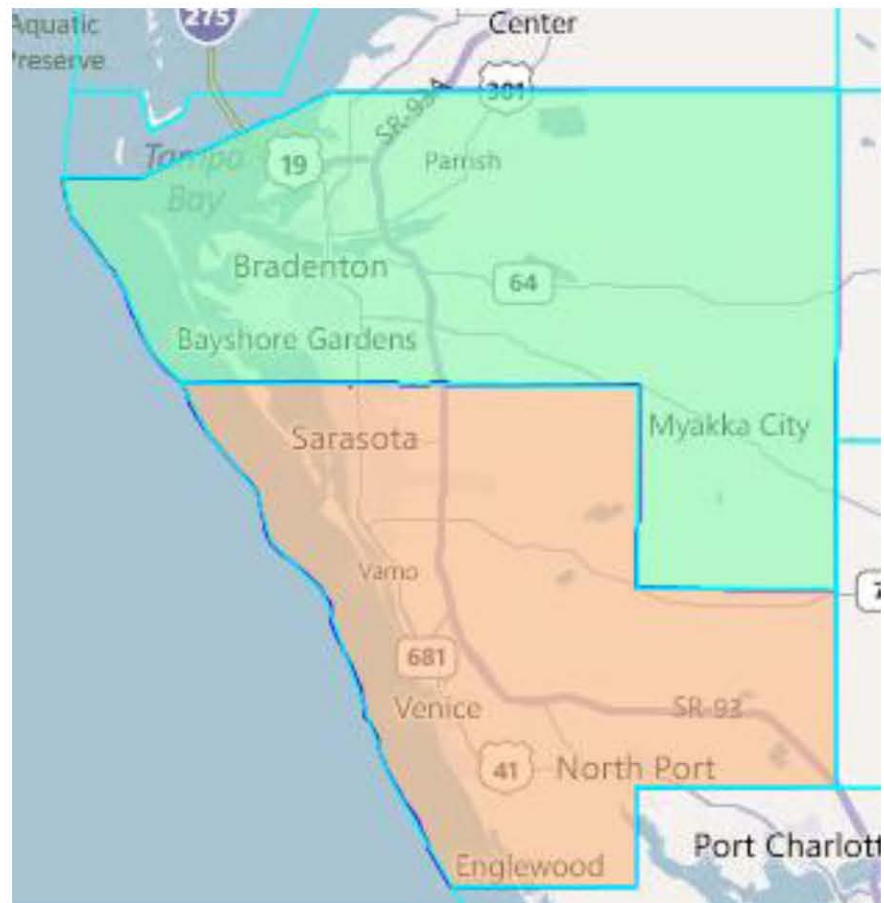
With the population of The Villages and that of an ideal population, it is possible to keep Sumter County whole, which is the only one of the three that can be kept whole.

Policy Issues:

- District drawn above has a deviation of -701.
- The Cities of Fruitland Park, Leesburg and Tavares are all split in the district above.

Example #2: Keeping Barrier Islands Whole

Manatee and Sarasota Counties look like this:



Policy Issues:

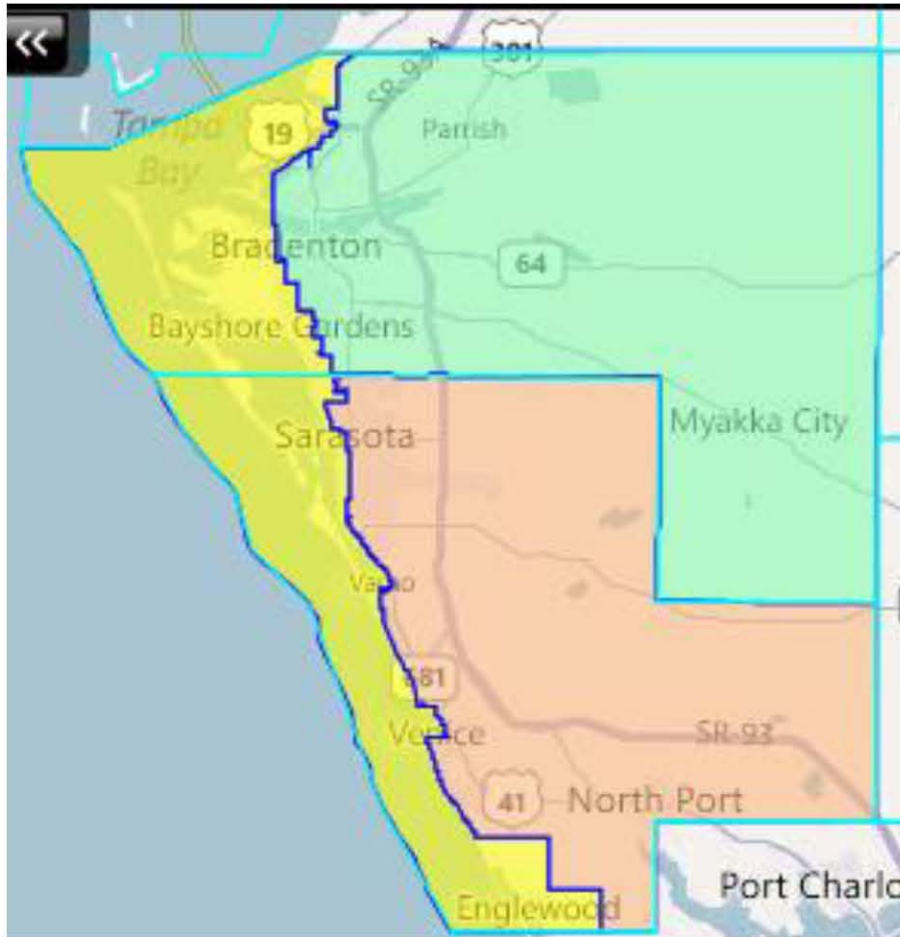
- Manatee County's population is enough for 2.06 House districts and could not be kept whole in a House plan.
- Sarasota County's population is enough for 2.42 House districts and could not be kept whole in a House plan.



All four districts above are over the ideal population for a House district, which would indicate that a third district in each county needs to be created.



A district that incorporated all of the barrier islands in both counties would look like this:



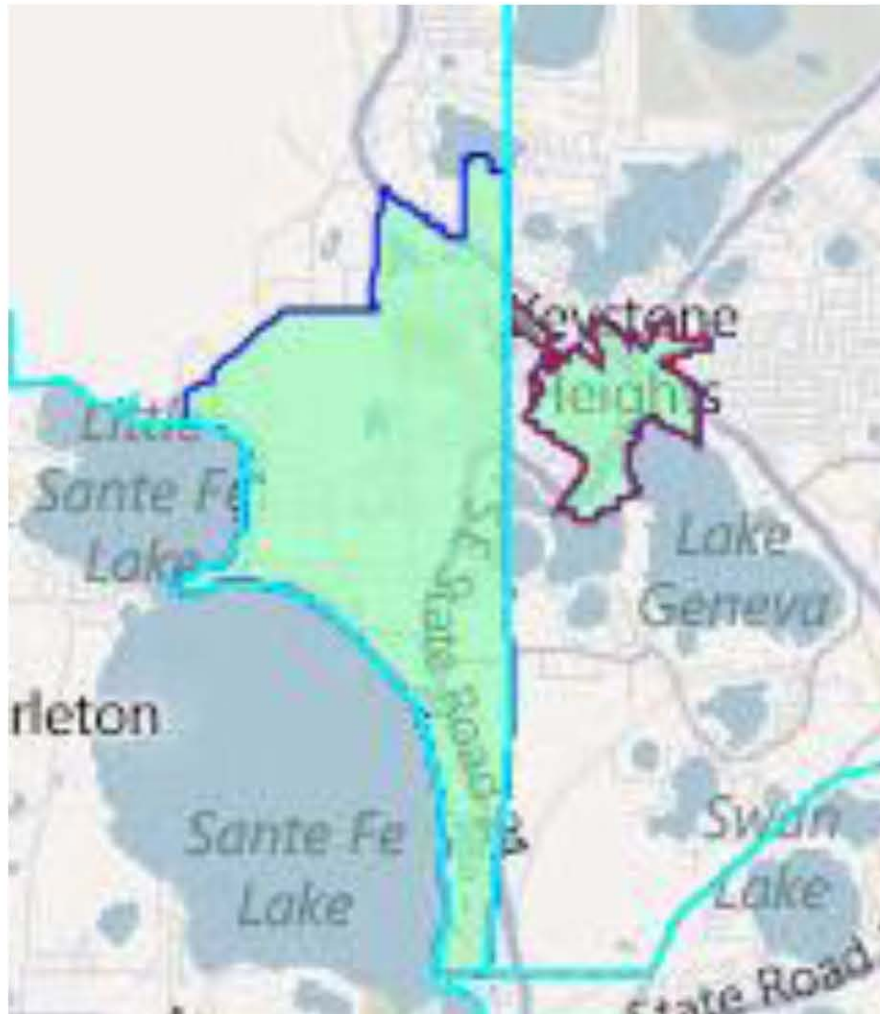
Policy Issues:

- The yellow district above has a population deviation of -219.
- The cities of Bradenton, Sarasota and Venice are split by the yellow district.
- The other districts in Manatee and Sarasota are still over the ideal population for a House district and would need to be split further. This could be another Manatee/Sarasota split or a split outside of the two counties.
- Since both counties needs to be split anyway, there is no tradeoff if a barrier island district were created that included both counties.
- Coincidentally, the Manatee-Bradenton Airport, which crosses into both counties, is also in the yellow district above.

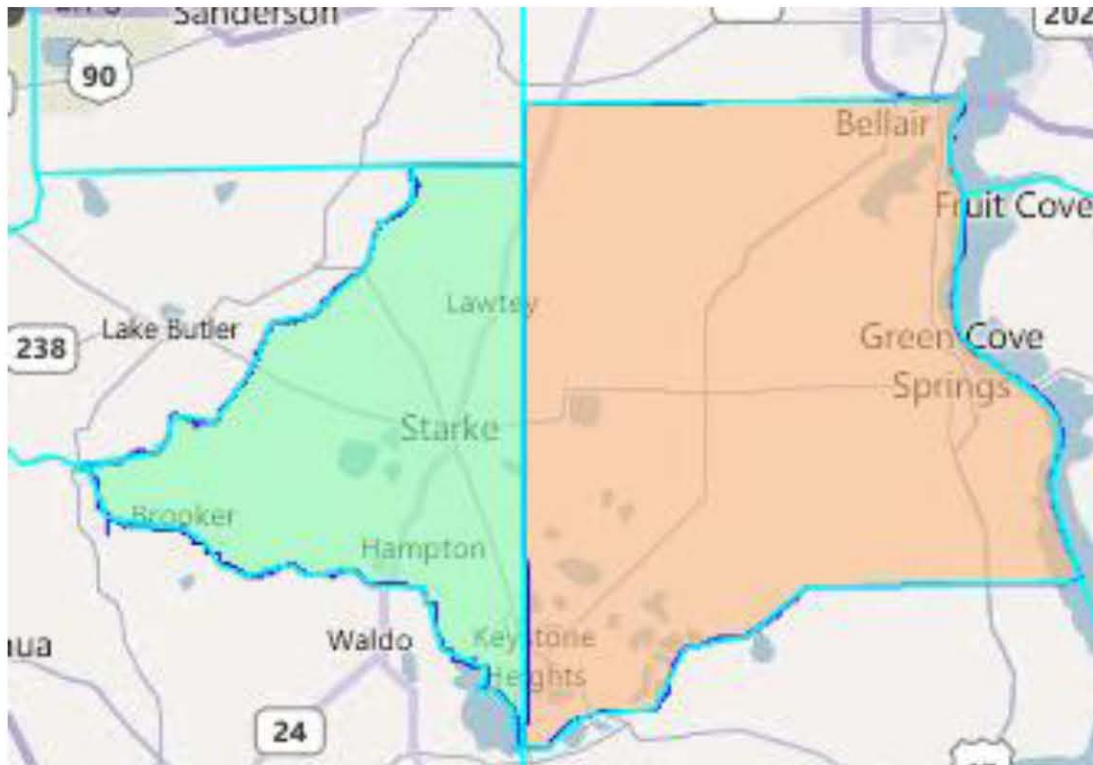
- However, looking to the southern portion of the yellow district, the residents of the southern end of Manasota Key may potentially be more closely linked to northern Charlotte County as it is closer for them to drive south to get to the bridge to get to the mainland versus driving north. More analysis would need to be done to confirm that.

Example #3: Keystone Heights

The boundaries for Keystone Heights are currently in both Bradford and Clay Counties. It looks something like this:



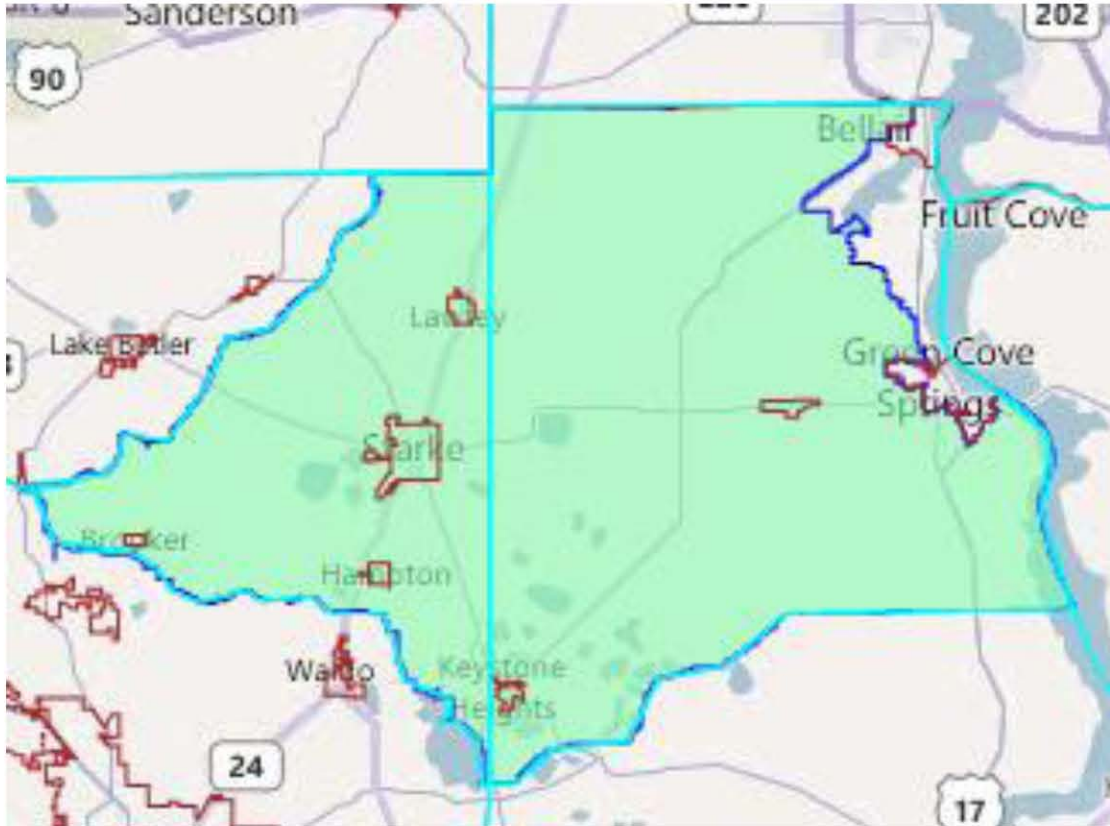
Bradford and Clay Counties look like this:



Policy Issues:

- Bradford County has the population of .18 House districts and could be kept whole within a House plan.
- Clay County has the population of 1.22 House districts and would need to be split within a House plan.

Given the populations of both counties, a district could be built that county both the Bradford and Clay County portions of Keystone Heights, while keeping Bradford County whole within the district. It could potentially look something like this:

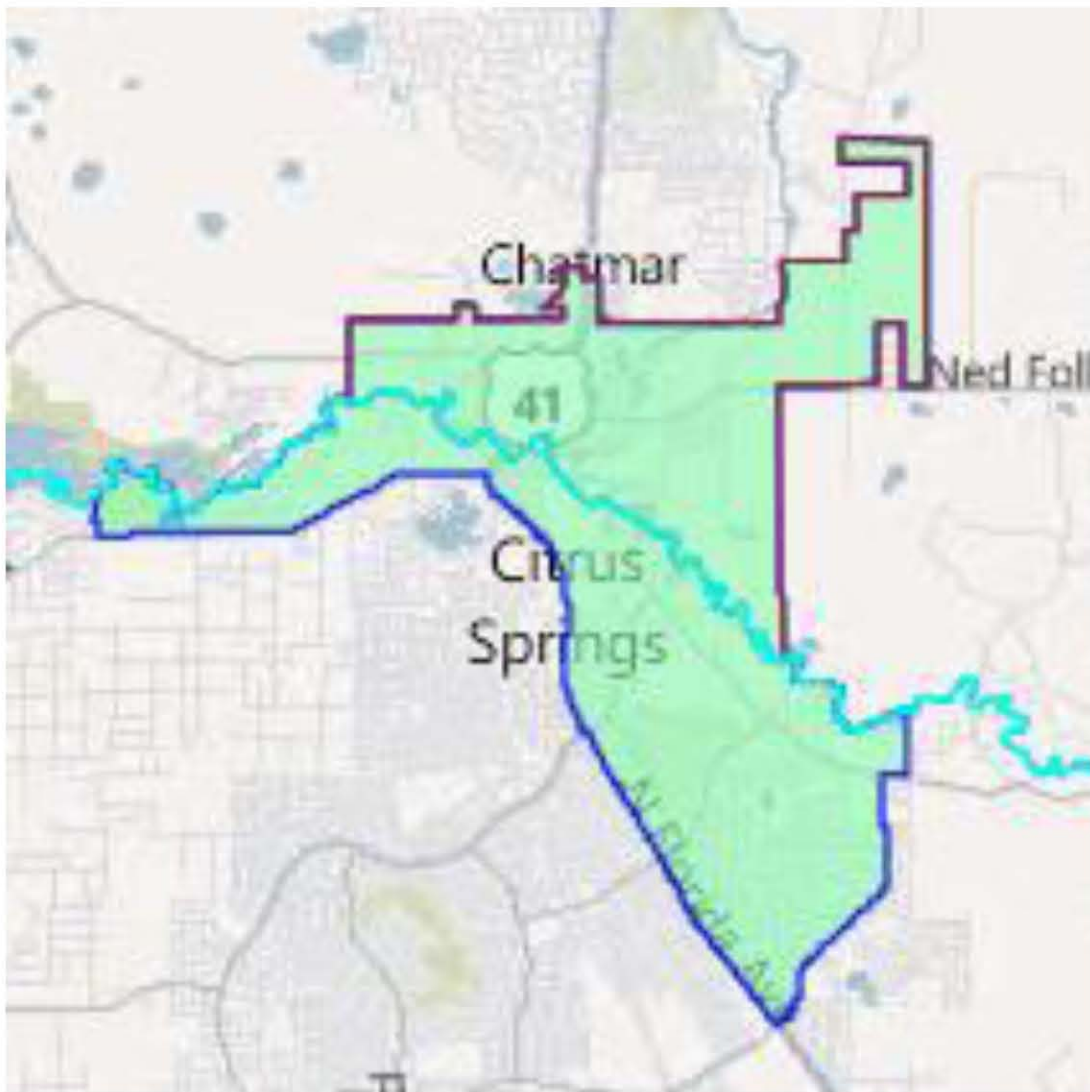


Policy Issues:

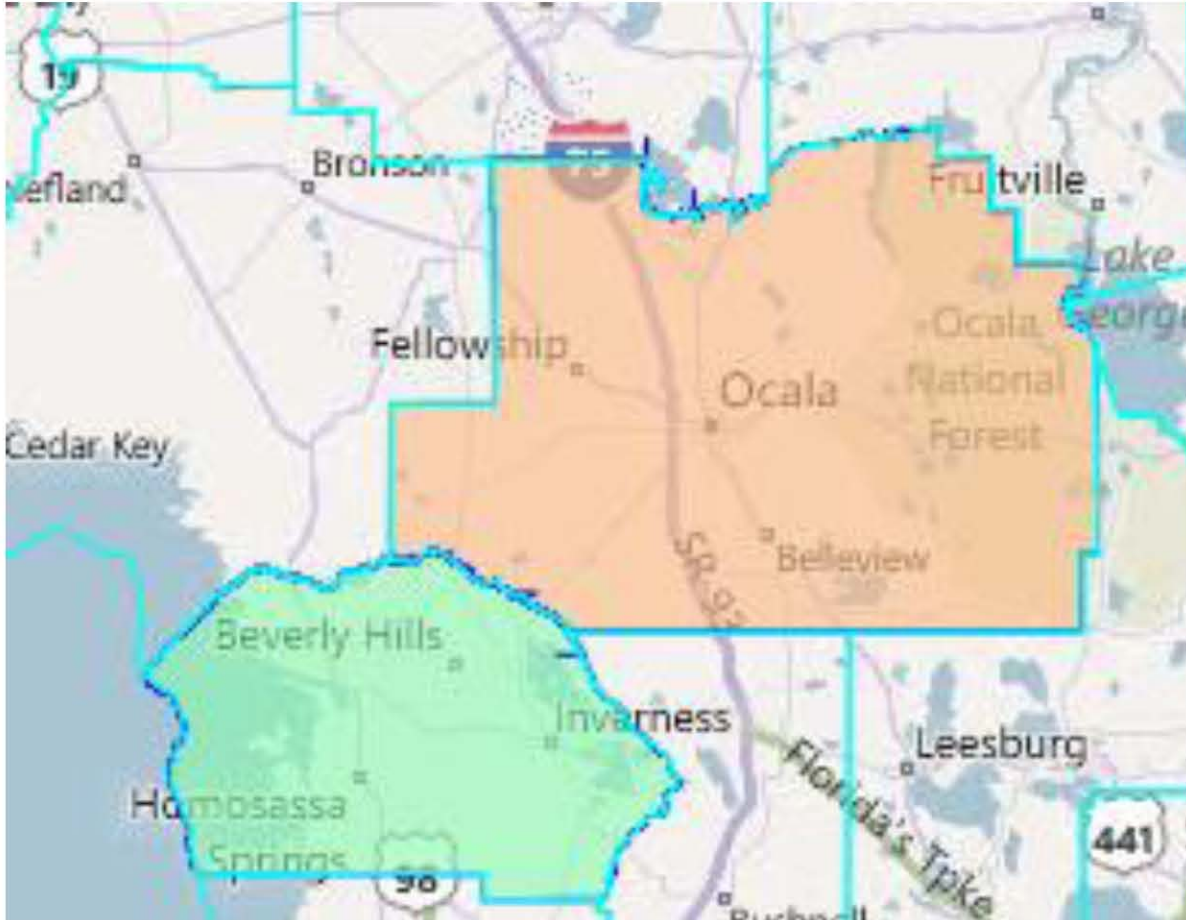
- The population deviation for the district above is -834.
- The district is able to keep all of Bradford County (and the cities within it) whole, while keeping all of Keystone Heights and Penney Farms whole, while leaving all of Orange Park and Green Cove Springs outside of the district. The district uses the boundary lines for both cities as a border as well.

Example #4: Dunnellon

Dunnellon lies on the border of Citrus and Marion Counties and looks something like this:



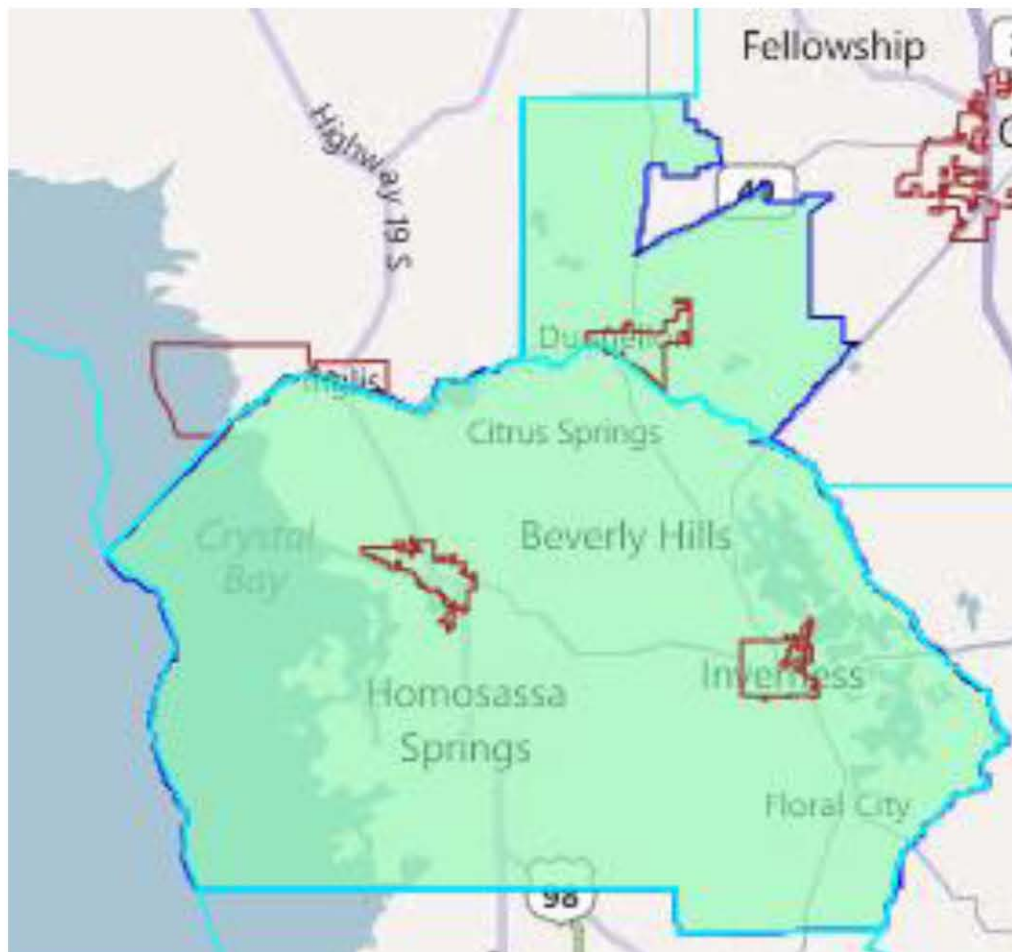
Citrus and Marion Counties look like this:



Policy Issues:

- The population of Citrus County is enough for .90 House districts and could be kept whole within a House plan.
- The population of Marion County is enough for 2.11 House districts and would need to be split in a House plan.

Given the populations of both counties, a district could be built that county both the Citrus and Marion County portions of Dunnellon, while keeping Citrus County whole within the district. It could potentially look something like this:

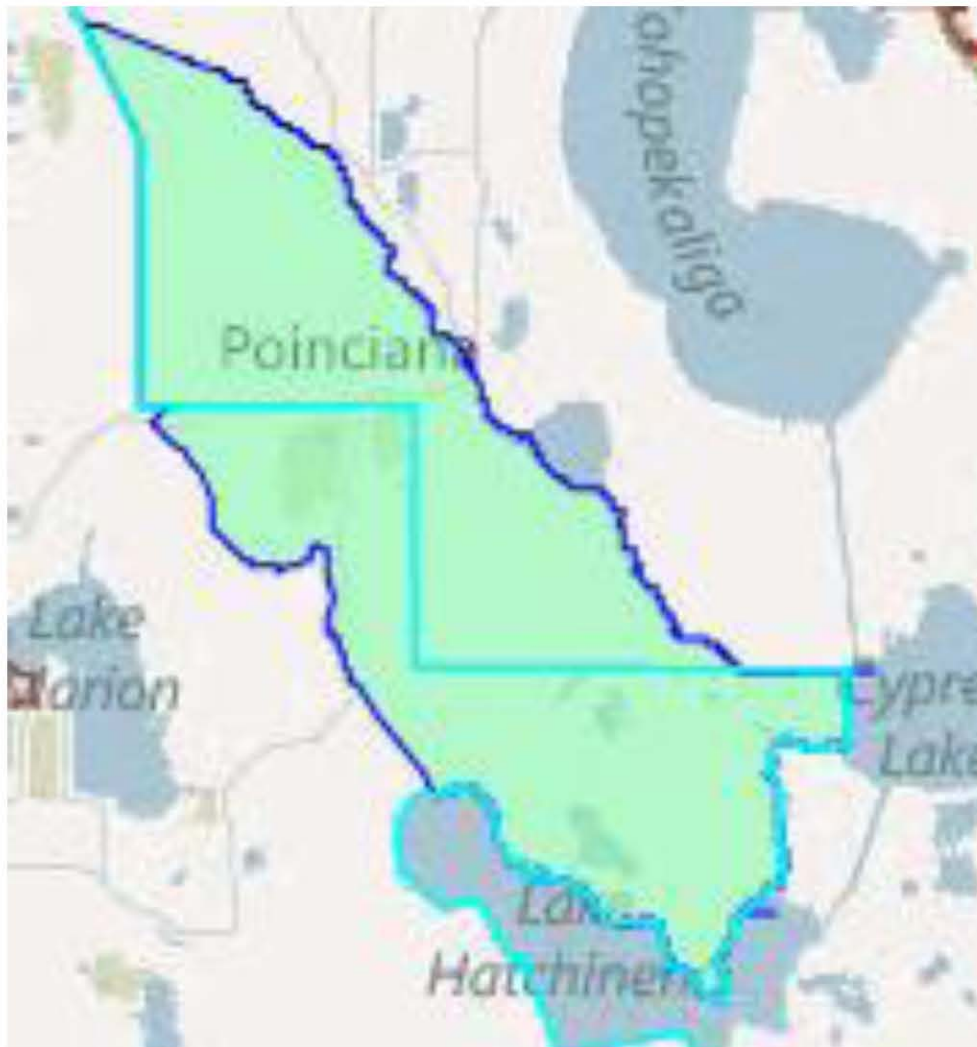


Policy Issues:

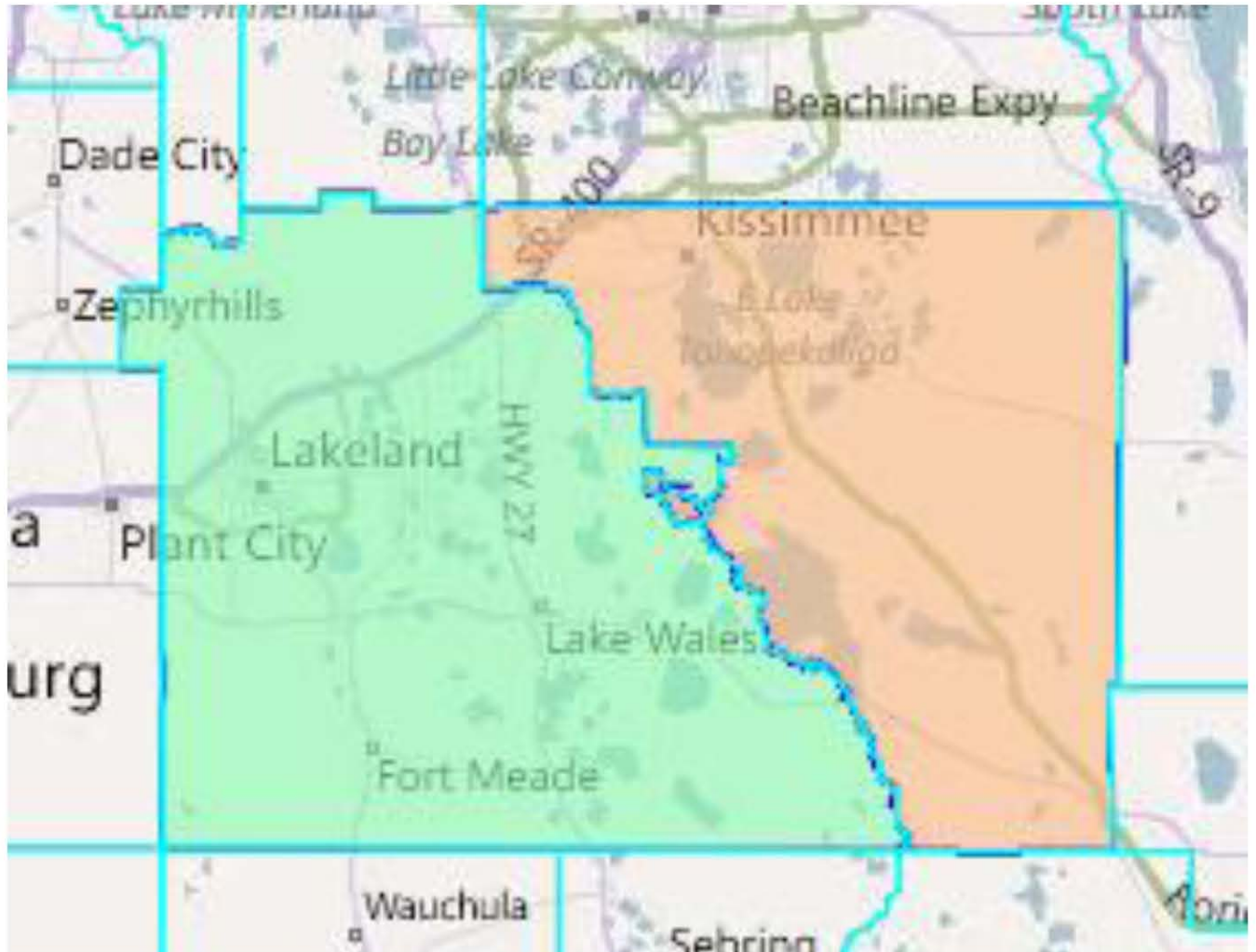
- The population deviation for the district above is +334.
- The district is able to keep all of Citrus County (and the cities within it) whole, while keep Dunnellon whole as well.

Example #5: The Community of Poinciana

The Poinciana community is in both Osceola and Polk Counties and looks something like this:



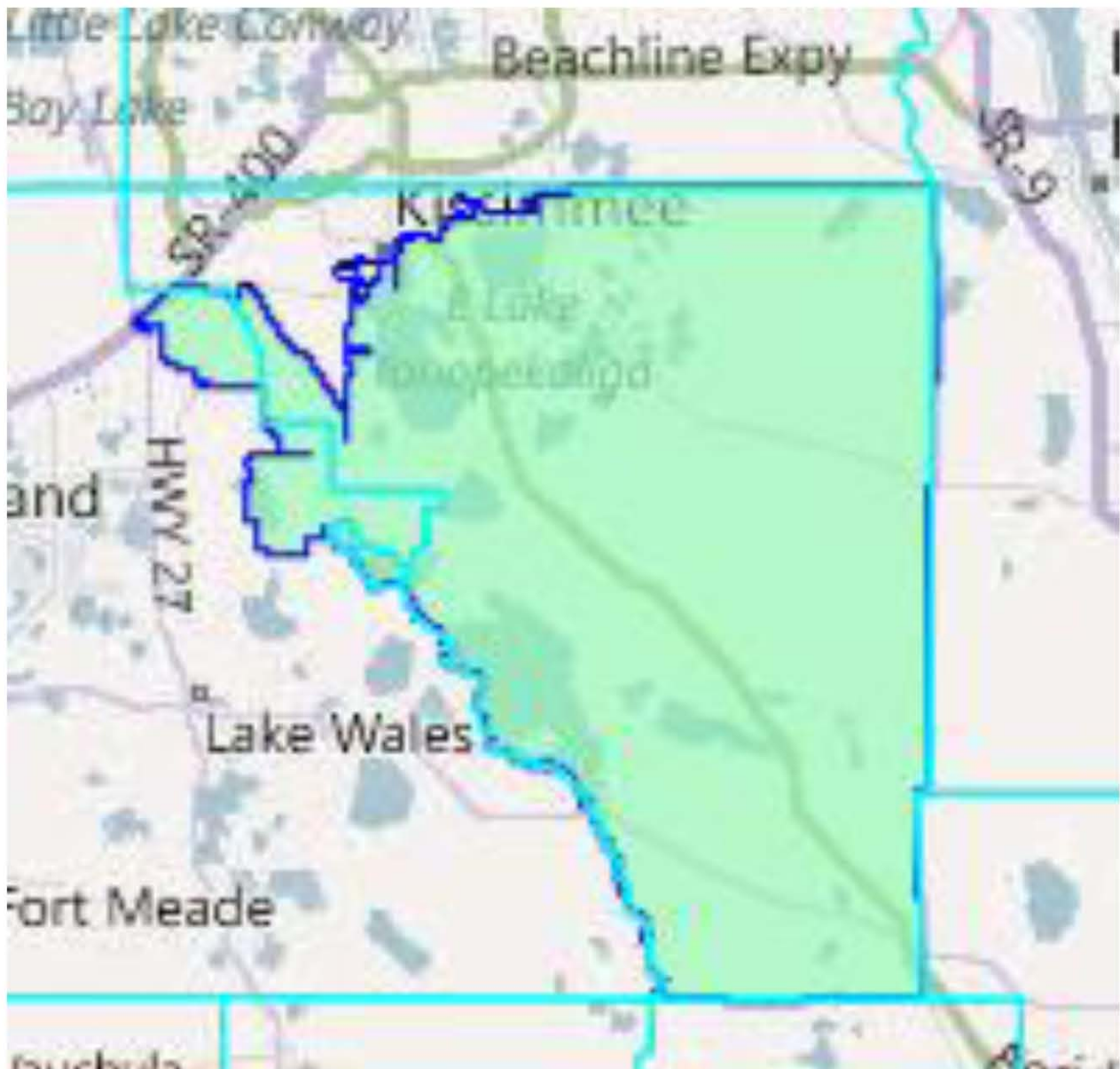
Osceola and Polk Counties look like this:



Policy Issues:

- The population for Polk County is enough for 3.84 House districts and would have to be split in a House plan.
- The population for Osceola County is enough for 1.71 House districts and would also have to be split in a House plan.

Since both counties have to be split, a district that includes both the Polk and Osceola County portions of Poinciana can be built. It could look something like this:

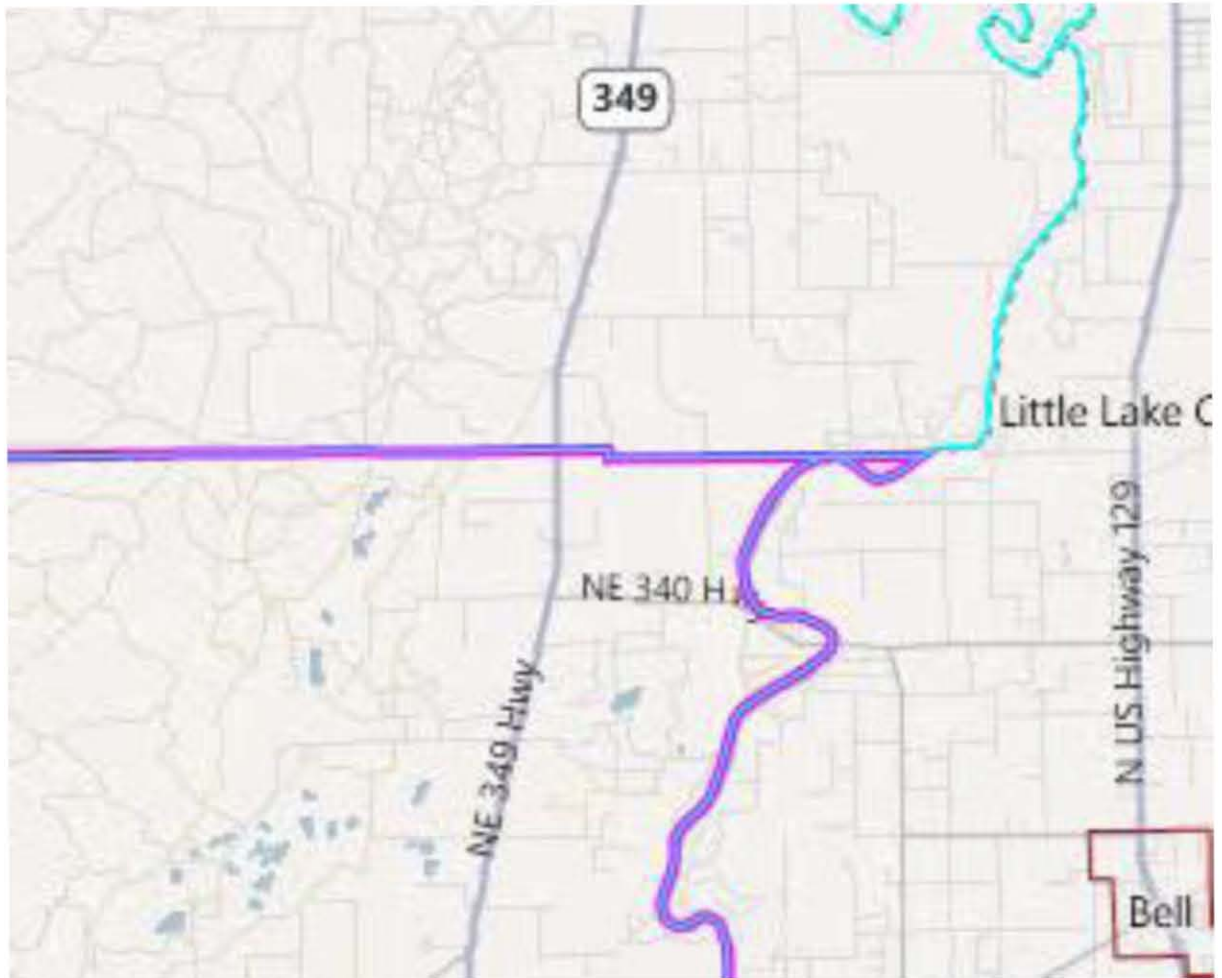


Policy Issues:

- The population deviation for the district above is -930.
- No city is split in this district.

Example #5: Dixie and Gilchrist Counties

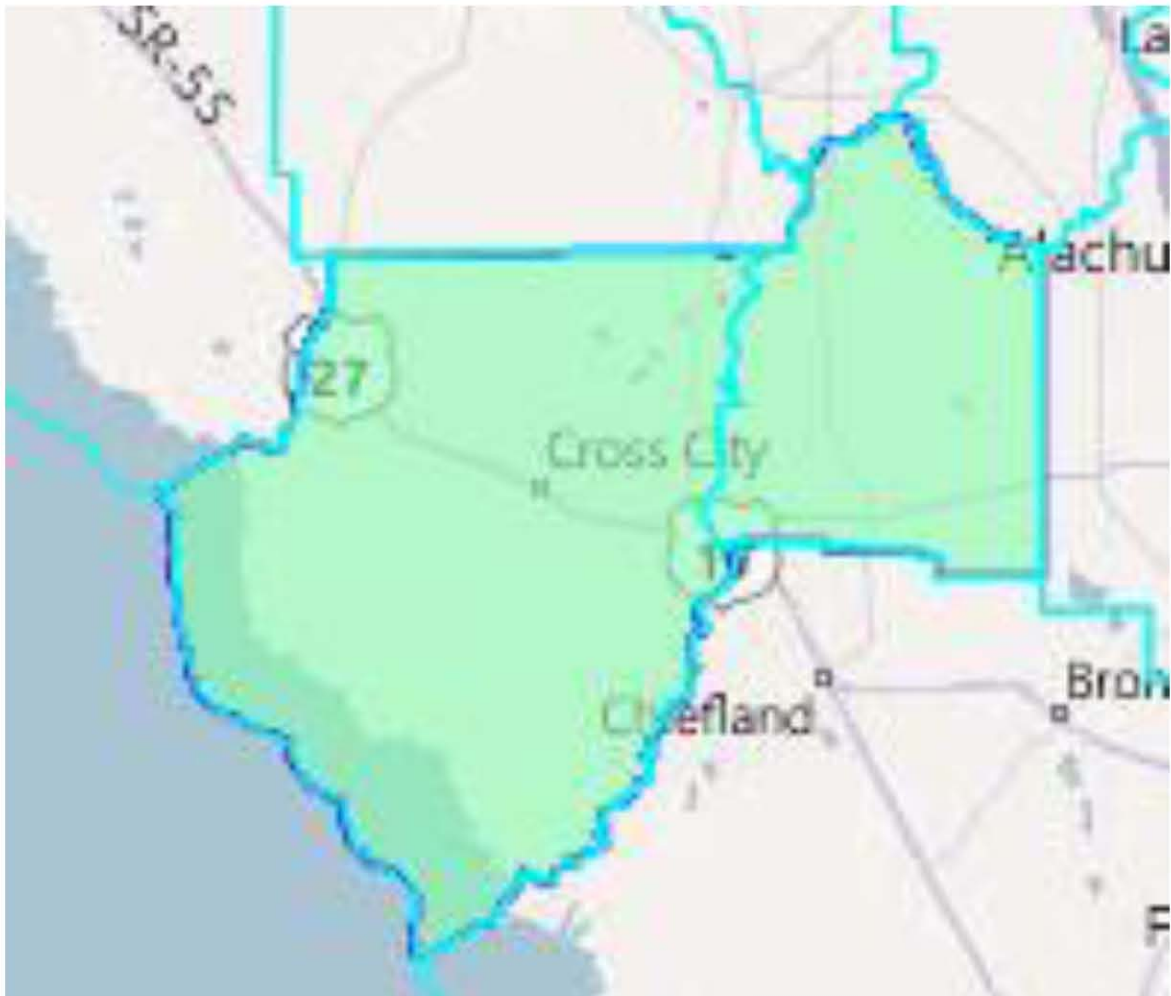
The boundary of Dixie County is drawn in such a way that has a contiguous to a point section of its border that crosses into Gilchrist County. The portion of that boundary looks like this:



Policy Issues:

- The population of Dixie County is enough for .10 House districts and could be kept whole within a House plan. In order to keep the county whole, because of that non-contiguous portion that crosses into Gilchrist County, a least a portion of Gilchrist County would need to be in the district as well.
- The population of Gilchrist County is enough for .11 House districts and could be kept whole within a House plan.

Given the populations of both counties, they could both be kept whole and linked together, in order to keep Dixie County whole. The beginning of that district would look like this:



Policy Issues:

- The district above has a population of 33,361, which is 123,316 short of the ideal population for a House district.