



---

# **Senate Redistricting Subcommittee**

## **Meeting Packet**

**Tuesday, November 1, 2011**

**8:00 AM**

**404 HOB**

# Committee Meeting Notice

## HOUSE OF REPRESENTATIVES

### Senate Redistricting Subcommittee

**Start Date and Time:** Tuesday, November 01, 2011 08:00 am  
**End Date and Time:** Tuesday, November 01, 2011 09:30 am  
**Location:** 404 HOB  
**Duration:** 1.50 hrs

**AGENDA:**

Redistricting Data  
Website Updates  
Additional Committee Business

**NOTICE FINALIZED on 10/25/2011 13:00 by Crofoot.Katie**

# Table of Contents

Tab 1 – Example of Redistricting Bill’s Statistical Analysis

Tab 2 – PowerPoint Regarding Redistricting Bill’s Statistical Analysis

Tab 3 – Relevant Terminology

Tab 4 – Update on Senate Maps Received Since October 17, 2011



**Computer Analysis of SPUBC0104**

<b>Plan File Name: SPUBC0104</b>	
<b>Plan Population Fundamentals</b>	
Total Population Assigned:	18,801,310 of 18,801,310
Ideal District Population:	696,344
District Population Remainder:	22
District Population Range:	696,344 to 696,345
District Deviation Range:	(0) To 1
Deviation:	(0) To 0.00 Total 0.00%
<b>Plan Geography Fundamentals:</b>	
Census Blocks Assigned:	484,481 out of 484,481
Number Non-Contiguous Sections:	1 (normally one)
County or District Split :	21 Split of 67 used
City or District Split :	77 Split of 411 used
VTD's Split :	134 Split of 9,436 used
Plan Type: Congress - 27 Districts	

<b>Number of Districts by Race Language</b>					
	20%-30%	30%-40%	40%-50%	50%-60%	60%+
Current Black VAP	5	3	3	2	0
New Black VAP	4	3	3	1	0
Current Hisp VAP	8	6	3	3	2
New Hisp VAP	8	6	3	3	2

Plan Name:	SPUBC0104	Number of Districts	27
------------	-----------	---------------------	----

<b>Spatial Measurements - Map Based</b>													
<b>Base Shapes</b>													
	Perimeter	Area	P/A	Pc/P	A/Ac	Perimeter	Area	P/A	Pc/P	A/Ac	Width	Height	W+H
C0104-Map	8,300	65,934	12.58%	86.02%	32.79%	5,618	93,458	6.01%	67.67%	70.54%	1,710	1,689	3,420
Current Map	10,081	65,922	15.29%	77.04%	26.09%	6,041	105,234	5.74%	59.91%	62.64%	1,898	1,830	3,797
C0104-Simple	7,540	65,850	11.45%	94.70%	32.75%				74.50%	70.45%			
Current Map	9,170	65,895	13.91%	84.71%	26.08%				65.87%	62.61%			

<b>Straight line in miles apart</b>						<b>Convex Hull - Indentation</b>							
Miles to drive by fastest route						Minutes to drive by fastest route							
Pop	VAP	VAP Black	VAP Hispanic	VAP	Pop	VAP	VAP Black	VAP Hispanic	VAP	Pop	VAP	VAP Black	VAP Hispanic
23	23	24	16	30	30	31	21	40	40	40	40	39	30
29	29	30	22	38	38	39	29	48	48	48	48	47	38

Plan Name: SPUBC0104		Number of Districts										27									
Spatial Measurements - Map Based																					
Base Shapes		Circle - Dispersion										Convex Hull - Indentation									
	Perimeter	Area	P/A	Perimeter	Area	P/A	Pc/P	A/Ac	Perimeter	Area	P/A	Pc/P	A/Ac	Width	Height	W+H					
1	423	4,763	8.89%	439	15,294	2.87%	103.75%	31.14%	331	5,880	5.62%	78.12%	81.00%	126	54	253					
2	570	10,027	5.68%	575	26,187	2.19%	100.84%	38.29%	438	12,866	3.40%	76.81%	77.94%	159	100	318					
3	719	1,602	44.86%	440	15,400	2.86%	61.30%	10.40%	336	5,636	5.96%	46.73%	28.43%	66	148	133					
4	434	1,746	24.86%	246	4,830	5.11%	56.87%	36.15%	205	2,625	7.80%	47.21%	66.52%	48	76	97					
5	496	5,870	8.46%	440	15,354	2.86%	88.61%	38.23%	331	7,234	4.57%	66.61%	81.14%	116	80	233					
6	355	2,456	14.48%	251	5,015	5.01%	70.71%	48.97%	218	3,051	7.14%	61.28%	80.51%	56	82	113					
7	546	5,315	10.27%	422	14,184	2.98%	77.44%	37.47%	337	7,584	4.44%	61.70%	70.08%	116	103	232					
8	303	2,060	14.72%	271	5,840	4.64%	89.43%	35.28%	220	2,976	7.39%	72.51%	69.24%	58	66	116					
9	181	713	25.45%	127	1,298	9.85%	70.40%	54.97%	112	832	13.46%	61.64%	85.78%	29	37	59					
10	183	605	30.39%	173	2,390	7.26%	94.35%	25.32%	121	783	15.45%	65.76%	77.31%	44	30	88					
11	316	2,097	15.09%	277	6,090	4.54%	87.48%	34.44%	228	3,172	7.18%	71.98%	66.12%	59	82	119					
12	250	1,753	14.26%	272	5,878	4.62%	108.77%	29.82%	192	2,120	9.05%	76.74%	82.70%	78	36	156					
13	105	392	26.80%	105	879	11.96%	100.12%	44.59%	89	486	18.31%	84.63%	80.73%	26	24	53					
14	178	1,049	17.03%	191	2,904	6.58%	107.04%	36.12%	146	1,370	10.65%	81.68%	76.57%	51	35	103					
15	97	439	22.13%	101	821	12.38%	104.58%	53.49%	85	489	17.38%	87.36%	89.90%	22	30	45					
16	233	1,725	13.55%	200	3,176	6.29%	85.53%	54.30%	177	2,095	8.44%	75.69%	82.34%	47	62	94					
17	56	105	53.83%	56	254	22.25%	99.61%	41.49%	47	126	37.30%	82.80%	83.67%	10	17	20					
18	441	4,244	10.39%	383	11,700	3.28%	87.00%	36.27%	298	5,413	5.50%	67.53%	78.41%	88	101	176					
19	183	1,465	12.54%	178	2,524	7.06%	96.95%	58.07%	155	1,739	8.91%	84.30%	84.29%	47	48	95					
20	564	7,771	7.26%	449	16,034	2.80%	79.51%	48.46%	385	9,882	3.89%	68.14%	78.64%	96	129	192					
21	113	235	47.98%	95	725	13.16%	84.57%	32.45%	77	334	23.05%	68.14%	70.51%	14	30	28					
22	374	2,213	16.89%	263	5,522	4.77%	70.47%	40.08%	222	3,114	7.12%	59.35%	71.08%	56	67	112					
23	184	155	118.93%	160	2,049	7.83%	86.91%	7.58%	115	465	24.73%	62.23%	33.41%	13	53	26					
24	192	1,395	13.82%	168	2,256	7.46%	87.32%	61.86%	151	1,503	10.04%	78.26%	92.87%	39	39	78					
25	141	226	62.48%	117	1,094	10.72%	83.04%	20.66%	93	520	17.88%	65.81%	43.48%	23	35	47					
26	98	177	55.25%	88	617	14.27%	89.68%	28.81%	67	269	24.90%	68.20%	66.09%	26	14	53					
27	552	5,323	10.38%	641	32,723	1.96%	116.00%	16.26%	442	10,894	4.05%	79.93%	48.86%	183	96	366					

SPUBC0104 Compactness of Populations within Districts

	Straight line in miles apart				Miles to drive by fastest route				Minutes to drive by fastest route			
	Pop	VAP	VAP Black	VAP Hispanic	Pop	VAP	VAP Black	VAP Hispanic	Pop	VAP	VAP Black	VAP Hispanic
1	30.20	30.23	26.39	29.92	40.04	40.10	34.80	39.73	51.72	51.80	45.22	52.53
2	49.61	49.53	44.58	46.86	62.69	62.59	56.15	59.20	76.48	76.41	68.45	72.61
3	63.70	63.63	64.40	68.71	79.83	79.78	80.03	85.81	83.00	83.00	82.32	87.60
4	15.22	15.17	13.86	13.64	22.75	22.69	20.75	20.57	30.40	30.33	28.19	28.02
5	38.92	38.98	40.54	39.32	49.48	49.50	51.25	49.54	62.27	62.28	62.98	62.27
6	27.99	27.93	26.81	27.62	36.04	35.95	34.50	35.97	43.82	43.75	42.05	44.01
7	33.72	33.60	33.92	32.89	44.42	44.28	44.45	43.66	59.88	59.78	59.31	58.35
8	31.54	31.45	32.77	32.74	41.95	41.80	43.20	43.49	54.92	54.86	55.64	56.23
9	13.03	13.01	13.35	12.05	19.26	19.21	19.73	18.04	28.57	28.49	29.12	27.50
10	9.27	9.20	9.48	9.57	14.12	14.03	14.54	14.62	23.72	23.61	24.04	23.79
11	30.98	30.98	31.15	32.07	40.85	40.82	40.94	42.44	47.70	47.70	47.17	48.64
12	19.49	19.66	19.58	18.81	26.17	26.38	26.01	25.25	34.99	35.25	34.58	33.83
13	8.42	8.40	7.95	7.87	12.09	12.06	11.47	11.34	20.87	20.82	19.78	19.91
14	17.72	17.73	19.03	18.31	24.39	24.38	26.32	25.36	38.12	38.10	40.23	39.10
15	8.34	8.35	8.85	8.30	11.39	11.42	12.27	11.33	22.56	22.63	22.57	22.24
16	15.62	15.77	12.86	14.61	21.43	21.62	17.57	20.24	30.82	31.04	26.15	29.26
17	6.26	6.27	6.04	6.54	8.84	8.85	8.53	9.22	15.79	15.81	15.37	16.25
18	30.26	30.12	28.55	32.64	39.66	39.44	37.80	43.36	49.37	49.27	46.99	52.70
19	17.03	17.11	16.34	16.62	23.42	23.54	22.23	22.78	35.35	35.52	33.28	34.24
20	50.24	50.26	51.44	50.25	66.03	66.13	67.03	65.61	78.37	78.50	79.18	77.92
21	11.31	11.19	12.09	12.33	15.88	15.71	16.82	17.04	23.87	23.71	24.56	24.78
22	23.19	23.26	25.49	23.26	30.16	30.17	34.03	30.43	38.02	37.96	42.43	38.26
23	18.77	18.72	18.47	19.54	22.65	22.61	22.23	23.53	28.13	28.10	27.61	28.92
24	7.61	7.59	7.91	7.20	11.09	11.06	11.57	10.51	18.03	18.02	18.65	17.43
25	12.32	12.35	12.12	12.79	17.71	17.74	17.28	18.32	25.68	25.74	25.17	26.54
26	6.49	6.46	6.83	6.41	9.37	9.33	9.76	9.26	17.37	17.27	17.51	17.13
27	21.73	22.60	18.15	17.50	28.21	29.29	23.55	23.03	39.88	41.16	34.00	33.65

Voting Age Population										Split Geography					District Core				
District	Total Pop	Deviation	TVAP	Black	%Black	Hispanic	%Hispanic	County	City	VTD	Core Dist	TPOP Core	%TPOP Dist	VAP Core	Black Core	Hisp Core			
1	696,345	1	541,731	71,463	13.19	24,628	4.54	1	1	0	1	660,824	94.89%	513,050	68,332	23,249			
2	696,345	1	552,534	132,083	23.90	26,268	4.75	2	2	0	2	635,155	91.21%	504,382	118,059	24,492			
3	696,345	1	518,257	258,328	49.84	55,900	10.78	8	12	0	3	564,956	81.13%	417,684	224,331	43,882			
4	696,344	0	540,271	59,665	11.04	36,232	6.70	2	2	1	4	557,433	80.05%	437,412	47,791	30,436			
5	696,345	1	541,437	83,377	15.39	37,108	6.85	5	5	0	6	478,091	68.65%	370,141	49,357	27,518			
6	696,344	0	562,440	56,477	10.04	48,722	8.66	5	4	5	7	508,970	73.09%	408,758	43,105	37,312			
7	696,345	1	564,120	36,055	6.39	43,521	7.71	2	2	2	5	362,056	51.99%	296,378	11,120	19,291			
8	696,345	1	555,526	69,567	12.52	66,109	11.90	2	5	0	5	297,600	42.73%	242,978	20,591	24,301			
9	696,345	1	524,602	61,172	11.66	172,815	32.94	3	3	6	8	429,469	61.67%	327,399	34,453	87,771			
10	696,345	1	547,336	51,161	9.34	126,048	23.02	2	8	2	24	391,206	56.17%	306,276	28,333	65,872			
11	696,345	1	552,129	52,132	9.44	45,977	8.32	2	7	7	15	412,898	59.29%	331,212	30,250	25,448			
12	696,344	0	516,516	74,303	14.38	89,032	17.23	2	5	1	12	494,809	71.05%	370,197	49,255	60,278			
13	696,345	1	540,271	95,133	17.60	138,269	25.59	0	2	5	11	508,350	73.00%	397,760	78,184	116,105			
14	696,345	1	554,756	22,223	4.00	48,370	8.71	2	2	2	9	364,178	52.29%	294,419	8,025	21,384			
15	696,345	1	572,948	64,349	11.23	39,590	6.90	0	2	2	10	571,599	82.08%	475,793	24,424	31,719			
16	696,345	1	571,078	33,611	5.88	59,609	10.43	2	0	1	13	595,094	85.45%	493,209	21,182	41,589			
17	696,345	1	520,956	294,019	56.43	166,060	31.87	2	12	4	17	637,461	91.54%	475,480	271,357	136,630			
18	696,345	1	551,078	59,122	10.72	70,426	12.77	2	2	8	16	442,786	63.58%	352,309	29,168	45,361			
19	696,345	1	564,528	39,624	7.01	79,555	14.09	1	0	0	14	631,256	90.65%	508,486	34,699	76,493			
20	696,344	0	559,189	38,722	6.92	103,898	18.58	2	0	1	14	227,700	32.69%	193,546	5,566	20,730			
21	696,345	1	554,679	58,660	10.57	99,543	17.94	2	10	5	19	501,788	72.06%	403,994	38,819	68,916			
22	696,344	0	570,786	57,998	10.16	83,628	14.65	2	17	16	22	379,294	54.46%	324,317	14,722	33,567			
23	696,345	1	531,664	258,895	48.69	92,465	17.39	2	21	14	23	495,485	71.15%	366,676	216,282	58,278			
24	696,345	1	537,668	48,271	8.97	402,271	74.81	2	10	2	21	462,799	66.46%	358,826	32,545	286,856			
25	696,345	1	557,751	55,041	9.86	189,893	34.04	2	20	3	20	485,320	69.69%	382,307	32,336	123,590			
26	696,345	1	570,063	27,085	4.75	466,574	81.84	0	4	3	18	448,223	64.36%	370,823	17,078	292,268			
27	696,345	1	524,905	73,901	14.07	306,671	58.42	1	1	2	25	415,528	59.67%	307,639	41,740	208,932			



SPUBC0104 Compare new district Core to the Current Districts

District	Current Dist	Common Pop	Pop of Part	Common VAP	Black VAP	% of the Black	Hispanic VAP	% or the Hispanic	Haitian POP	W. Indies POP
1	1	660,824	94.89%	513,050	13.31%	95.61%	4.53%	94.40%	0.14%	0.63%
2	2	35,521	5.10%	28,681	1.34%	0.54%	4.80%	5.59%	0%	0.00%
2	2	635,155	91.21%	504,382	23.40%	89.38%	4.85%	93.23%	0.33%	1.05%
	1	33,334	4.78%	26,315	14.90%	2.96%	2.67%	2.67%	0.10%	0.18%
	4	27,856	4.00%	21,837	33.49%	5.53%	4.91%	4.08%	0.44%	1.52%
3	3	564,956	81.13%	417,684	53.70%	86.83%	10.50%	78.50%	3.82%	6.91%
	6	52,989	7.60%	40,782	38.07%	6.01%	7.57%	5.52%	0.53%	1.73%
	8	23,157	3.32%	17,888	22.42%	1.55%	18.53%	5.93%	3.53%	5.85%
	24	19,550	2.80%	15,027	19.11%	1.11%	18.42%	4.95%	0.97%	4.25%
	4	18,953	2.72%	14,711	29.35%	1.67%	7.62%	2.00%	0.60%	1.11%
	7	16,740	2.40%	12,165	15.92%	0.74%	14.17%	3.08%	0.16%	0.99%
4	4	557,433	80.05%	437,412	10.92%	80.09%	6.95%	84.00%	0.20%	0.74%
	7	102,499	14.71%	75,135	3.02%	3.81%	4.53%	9.40%	0.08%	0.26%
	3	30,797	4.42%	23,414	26.41%	10.36%	9.68%	6.25%	0.09%	0.58%
	6	5,615	0.80%	4,310	12.69%	0.91%	2.80%	0.33%	0.01%	0.33%
5	6	478,091	68.65%	370,141	13.33%	59.19%	7.43%	74.15%	0.46%	1.10%
	4	140,176	20.13%	108,886	21.04%	27.48%	4.31%	12.64%	0.13%	0.62%
	2	50,421	7.24%	39,187	12.17%	5.72%	7.87%	8.31%	0%	0.43%
	3	27,657	3.97%	23,223	15.66%	4.36%	7.80%	4.88%	0.46%	0.87%
6	7	508,970	73.09%	408,758	10.54%	76.32%	9.12%	76.58%	0.38%	1.40%
	24	164,339	23.60%	135,846	5.48%	13.19%	6.93%	19.33%	0.22%	0.72%
	3	23,035	3.30%	17,836	19.28%	6.09%	11.16%	4.08%	0.01%	0.55%
7	5	362,056	51.99%	296,378	3.75%	30.84%	6.50%	44.32%	0.05%	0.40%
	6	226,145	32.47%	183,587	8.30%	42.28%	9.83%	41.50%	0.14%	0.93%
	8	91,640	13.16%	70,808	9.25%	18.17%	8.18%	13.31%	0.04%	1.30%
	2	16,422	2.35%	13,278	8.64%	3.18%	2.81%	0.85%	0%	0.01%
	3	82	0.01%	69	0%	0%	1.44%	0.00%	0%	0.13%
8	5	297,600	42.73%	242,978	8.47%	29.59%	10.00%	36.75%	0.38%	1.44%
	12	254,268	36.51%	195,382	18.05%	50.71%	16.30%	48.19%	1.22%	2.31%
	8	74,094	10.64%	60,151	7.71%	6.66%	7.32%	6.66%	0.21%	0.72%
	6	49,887	7.16%	41,095	10.90%	6.43%	4.62%	2.87%	0.21%	1.12%
	15	18,933	2.71%	14,841	6.98%	1.48%	22.90%	5.14%	0%	0.90%
	3	1,563	0.22%	1,079	64.31%	0.99%	22.15%	0.36%	0.53%	1.27%
9	8	429,469	61.67%	327,399	10.52%	56.32%	26.80%	50.78%	0.95%	2.61%
	15	226,919	32.58%	169,273	9.52%	26.36%	43.51%	42.62%	0.92%	2.71%
	12	21,959	3.15%	15,098	24.40%	6.02%	51.07%	4.46%	3.80%	11.58%
	24	15,522	2.22%	10,969	8.23%	1.47%	30.07%	1.90%	0%	0.56%

SPUBC0104 Compare new district Core to the Current Districts

District	Current Dist	Common Pop	Pop of Part	Common VAP	Black VAP	% of the Black	Hispanic VAP	% or the Hispanic	Haitian POP	W. Indies POP
	3	2,476	0.35%	1,863	32.63%	0.99%	19.64%	0.21%	0.14%	4.12%
10	24	391,206	56.17%	306,276	9.25%	55.38%	21.50%	52.25%	0.54%	2.61%
	8	187,248	26.89%	149,316	7.84%	22.88%	32.13%	38.07%	0.33%	1.65%
	7	117,126	16.82%	91,133	7.01%	12.48%	13.30%	9.61%	0.24%	1.40%
	3	765	0.10%	611	37.31%	0.44%	10.31%	0.04%	0.69%	1.15%
11	15	412,898	59.29%	331,212	9.13%	58.02%	7.68%	55.34%	0.72%	2.42%
	24	208,616	29.95%	164,014	7.42%	23.37%	6.65%	23.73%	0.05%	0.84%
	7	67,107	9.63%	51,020	10.63%	10.41%	16.16%	17.93%	0.08%	1.12%
	3	7,724	1.10%	5,883	18.59%	2.09%	23.28%	2.97%	0.14%	0.44%
12	12	494,809	71.05%	370,197	13.30%	66.28%	16.28%	67.70%	0.35%	1.40%
	9	147,656	21.20%	107,120	5.61%	8.09%	18.36%	22.09%	0.07%	0.99%
	11	53,879	7.73%	39,199	39.75%	20.97%	23.15%	10.19%	1.99%	4.58%
13	11	508,350	73.00%	397,760	19.65%	82.18%	29.18%	83.97%	0.82%	2.46%
	9	183,419	26.34%	138,806	8.12%	11.85%	15.72%	15.78%	0.25%	1.34%
	12	4,576	0.65%	3,705	13.14%	0.51%	9.04%	0.24%	0.33%	0.60%
14	9	364,178	52.29%	294,419	2.72%	36.11%	7.26%	44.20%	0.05%	0.41%
	5	269,877	38.75%	208,403	5.40%	50.68%	11.76%	50.70%	0.12%	1.18%
	10	62,290	8.94%	51,934	1.68%	3.94%	4.73%	5.08%	0.03%	0.16%
15	10	571,599	82.08%	475,793	5.13%	37.95%	6.66%	80.11%	0.05%	0.33%
	11	66,450	9.54%	49,878	64.48%	49.98%	3.67%	4.63%	0.52%	2.09%
	9	58,296	8.37%	47,277	10.53%	7.74%	12.76%	15.24%	0.07%	0.45%
16	13	595,094	85.45%	493,209	4.29%	63.02%	8.43%	69.76%	0.50%	0.83%
	12	56,131	8.06%	44,240	5.88%	7.74%	23.88%	17.72%	0.21%	0.46%
	11	45,120	6.47%	33,629	23.90%	23.91%	22.15%	12.50%	1.60%	2.01%
17	17	637,461	91.54%	475,480	57.07%	92.29%	28.73%	82.27%	15.98%	23.97%
	18	32,844	4.71%	26,270	20.24%	1.80%	79.10%	12.51%	2.41%	3.68%
	23	18,735	2.69%	13,547	58.55%	2.69%	28.16%	2.29%	6.79%	25.31%
	21	7,278	1.04%	5,638	12.43%	0.23%	85.66%	2.90%	3.01%	8.54%
	20	27	0.00%	21	66.66%	0.00%	19.04%	0.00%	9.70%	13.10%
18	16	442,786	63.58%	352,309	8.27%	49.33%	12.87%	64.40%	1.58%	3.12%
	15	154,820	22.23%	124,767	6.99%	14.76%	9.30%	16.47%	0.55%	1.30%
	22	45,738	6.56%	35,076	3.22%	1.91%	11.74%	5.84%	0.01%	0.77%
	23	42,545	6.10%	31,671	49.64%	26.59%	16.57%	7.45%	4.07%	6.61%
	12	10,456	1.50%	7,255	24.60%	3.01%	56.38%	5.80%	7.58%	16.56%
19	14	631,256	90.65%	508,486	6.82%	87.57%	15.04%	96.15%	1.20%	2.08%
	16	65,089	9.34%	56,042	4.82%	6.82%	5.46%	3.84%	0.79%	2.81%
20	14	227,700	32.69%	193,546	2.87%	14.37%	10.71%	19.95%	1.74%	2.31%

SPUBC0104 Compare new district Core to the Current Districts

District	Current Dist	Common Pop	Pop of Part	Common VAP	Black VAP	% of the Black	Hispanic VAP	% or the Hispanic	Haitian POP	W. Indies POP
16	184,334	26.47%	148,186	8.19%	31.35%	18.06%	25.75%	0.47%	1.85%	
13	162,711	23.36%	129,483	5.90%	19.73%	14.21%	17.71%	0.51%	1.05%	
25	113,557	16.30%	82,051	10.68%	22.64%	44.48%	35.13%	4.91%	5.81%	
23	8,042	1.15%	5,923	46.31%	7.08%	25.29%	1.44%	0.96%	2.80%	
21	501,788	72.06%	403,994	9.60%	66.17%	17.05%	69.23%	3.78%	5.85%	
22	189,114	27.15%	146,294	10.38%	25.89%	20.54%	30.19%	3.58%	6.06%	
23	5,443	0.78%	4,391	27.67%	2.07%	13.02%	0.57%	2.86%	8.03%	
22	379,294	54.46%	324,317	4.53%	25.38%	10.35%	40.13%	1.46%	2.48%	
16	105,502	15.15%	80,476	10.66%	14.79%	16.05%	15.44%	1.55%	4.98%	
23	87,136	12.51%	65,139	33.72%	37.87%	21.42%	16.68%	5.89%	10.57%	
19	86,012	12.35%	67,350	10.62%	12.33%	24.62%	19.83%	2.36%	4.62%	
20	38,400	5.51%	33,504	7.83%	4.52%	19.71%	7.89%	4.17%	5.65%	
23	495,485	71.15%	366,676	58.98%	83.54%	15.89%	63.02%	13.02%	23.08%	
20	88,603	12.72%	72,579	29.07%	8.15%	19.51%	15.31%	6.23%	17.76%	
19	65,990	9.47%	55,118	20.45%	4.35%	18.39%	10.96%	5.82%	9.86%	
22	46,267	6.64%	37,291	8.54%	1.23%	26.50%	10.68%	2.65%	4.14%	
24	462,799	66.46%	358,826	9.06%	67.42%	79.94%	71.30%	1.52%	3.90%	
25	136,469	19.59%	102,814	4.55%	9.69%	87.42%	22.34%	0.53%	0.96%	
20	69,628	9.99%	53,074	10.72%	11.78%	33.76%	4.45%	1.54%	6.33%	
23	12,968	1.86%	12,080	7.60%	1.90%	37.40%	1.12%	2.00%	6.14%	
22	12,260	1.76%	9,127	3.94%	0.74%	21.03%	0.47%	0.58%	1.46%	
17	2,214	0.31%	1,741	32.28%	1.16%	66.85%	0.28%	1.02%	3.92%	
18	7	0.00%	6	16.66%	0.00%	83.33%	0.00%	1.27%	1.27%	
20	485,320	69.69%	382,307	8.45%	58.74%	32.32%	65.08%	1.31%	4.41%	
19	82,629	11.86%	65,928	13.70%	16.41%	22.38%	7.77%	1.91%	7.05%	
18	81,861	11.75%	72,352	4.46%	5.87%	56.11%	21.38%	0.28%	0.74%	
22	21,586	3.09%	16,540	11.40%	3.42%	26.32%	2.29%	2.09%	5.11%	
23	13,753	1.97%	11,202	19.64%	3.99%	28.45%	1.67%	2.00%	11.02%	
17	11,196	1.60%	9,422	18.39%	3.14%	36.12%	1.79%	1.95%	5.20%	
18	448,223	64.36%	370,823	4.60%	63.05%	78.81%	62.64%	0.29%	0.69%	
25	141,622	20.33%	111,086	2.68%	11.01%	90.56%	21.56%	0.09%	0.64%	
21	92,462	13.27%	76,225	2.74%	7.72%	89.59%	14.63%	0.12%	0.59%	
20	9,749	1.40%	8,340	13.47%	4.14%	45.45%	0.81%	11.05%	13.10%	
17	4,289	0.61%	3,589	32.26%	4.27%	44.83%	0.34%	16.09%	20.31%	
25	415,528	59.67%	307,639	13.56%	56.48%	67.91%	68.12%	2.35%	5.70%	
18	149,855	21.52%	115,138	14.35%	22.36%	33.94%	12.74%	1.18%	3.42%	
21	130,962	18.80%	102,128	11.02%	15.23%	57.43%	19.12%	0.82%	3.76%	

Vertical line on the left side of the page.

SPUBC0104 Plan Splits		
1	Counties	EscambiaHolmes2 11,489 of 19,927 OkaloosaSanta RosaWalton
	Cities	Century, Cinco Bayou, Crestview, De Funiak Springs, Destin, Esto, Fort Walton Beach, Freeport, Gulf Breeze, Jay, Laurel Hill, Mary Esther, Milton, Niceville, Noma, Paxton, Pensacola, <b>Ponce de Leon2 587 of 598</b> , Shalimar, Valparaiso
2	Counties	Bay CalhounFranklinGadsden GulfHolmes2 18,438 of 19,927 JacksonJeffersonLeonLiberty Madison2 14,028 of 19,224 Taylor Wakulla Washington
	Cities	Alford, Altha, Apalachicola, Bascom, Blountstown, Bonifay, Bristol, Callaway, Carrabelle, Caryville, Chattahoochee, Chipley, Cottontale, Ebro, Graceville, Grand Ridge, Greensboro, Greenville, Greenwood, Gretna, Havana, Jacob City, Lynn Haven, <b>Madison2 599 of 2843</b> , Malone, Marianna, Mexico Beach, Midway, Monticello, Panama City, Panama City Beach, Parker, Perry, <b>Ponce de Leon2 111 of 598</b> , Port St. Joe, Quincy, St. Marks, Sneads, Sopchoppy, Springfield, Tallahassee, Vernon, Wausau, Westville, Wewahitchka
3	Counties	Alachua2 33,345 of 247,336 Clay2 17,857 of 190,865 Duvall3 260,962 of 864,263 Lakeland4 20,413 of 297,052 Marion2 31,849 of 331,298 Orange3 267,156 of 1,145,956 Putnam3 32,356 of 74,364 Seminole4 32,407 of 422,718
	Cities	<b>Apopka3 11480 of 41542</b> , Eatonville, <b>Gainesville2 21084 of 124354</b> , <b>Green Cove Springs2 5290 of 6908</b> , Hawthorne, Interlachen, <b>Jacksonville3 260962 of 821784</b> , <b>Maitland2 1625 of 15751</b> , <b>Mount Doral2 447 of 12370</b> , <b>Ocala2 10100 of 56315</b> , <b>Orange Park2 1997 of 8412</b> , <b>Orlando3 80083 of 238300</b> , <b>Palatka2 9162 of 10558</b> , <b>Reddick, Sanford3 20844 of 53570</b> , <b>Winter Park2 4297 of 27852</b>
4	Counties	Duval3 520,531 of 864,263 NassauSt. Johns2 102,499 of 190,039
	Cities	Atlantic Beach, Callahan, Fernandina Beach, Hilliard, <b>Jacksonville3 479477 of 821784</b> , Jacksonville Beach, Neptune Beach, <b>St. Augustine2 11 of 12975</b>
	Vtd's	<b>121090024 21865 of 2112</b>
5	Counties	Alachua2 213,991 of 247,336 Baker BradfordClay2 173,008 of 190,865 ColumbiaDuvall3 82,770 of 864,263 HamiltonLafayette Madison2 115,196 of 19,224 Putnam3 7,459 of 74,364 Suwannee Union
	Cities	Alachua, Archer, Baldwin, Branford, Brookier, Fort White, <b>Gainesville2 103270 of 124354</b> , Glen St. Mary, <b>Green Cove Springs2 1618 of 6908</b> , Hampton, High Springs, <b>Jacksonville3 81345 of 821784</b> , Jasper, Jennings, Keystone Heights, La Crosse, Lake Butler, Lake City, Lawtey, Lee, Live Oak, Macclenny, <b>Madison2 2244 of 2843</b> , Mayo, Micanopy, Newberry, <b>Orange Park2 6415 of 8412</b> , Penney Farms, Raiford, Starke, Waldo, White Springs, Worthington Springs
6	Counties	FlaglerLake4 3,759 of 297,052 Putnam3 34,549 of 74,364 St. Johns2 87,540 of 190,039 Seminole4 6,273 of 422,718 Volusia2 468,527 of 494,593
	Cities	Beverly Beach, Bunnell, Crescent City, Daytona Beach, Daytona Beach Shores, DeBary, Deland, <b>Deltona2 82335 of 85182</b> , <b>Edgewater2 10014 of 20750</b> , Flagler Beach, Hastings, Holly Hill, Lake Helen, Marineland, New Smyrna Beach, Orange City, Ormond Beach, <b>Palatka2 1396 of 10558</b> , Palm Coast, Pierson, Pomona Park, Ponce Inlet, Port Orange, <b>St. Augustine2 12974 of 12975</b> , St. Augustine Beach, Sanford, South Daytona, Welaka
	Vtd's	<b>121270086 24659 of 4670</b> , <b>121270091 212175 of 4983</b> , <b>121270093 23342 of 3346</b> , <b>121270219 21187 of 5415</b> , <b>121270222 21194 of 1420</b>
7	Counties	Citrus Dixiel Gilchrist Hernando Lakeland4 8,720 of 297,052 Levy Marion2 299,449 of 331,298
	Cities	Bell, Belleview, Bronson, Brooksville, Cedar Key, Chiefland, Cross City, Crystal River, Dunnellon, Fanning Springs, Horseshoe Beach, Inglis, Inverness, McIntosh, <b>Ocala2 46215 of 56315</b> , Otter Creek, Trenton, <b>Umatilla2 1990 of 3456</b> , Weeki Wachee, Williston, Yankeetown
	Vtd's	<b>120830032 21240 of 2799</b> , <b>120830034 21655 of 1882</b>
8	Counties	Lake4 264,160 of 297,052 Polk3 338,765 of 602,095 Sumter
	Cities	Astatula, Auburndale, Bushnell, Center Hill, Clermont, Coleman, Davenport, <b>Dundee2 4 of 3717</b> , Eustis, Fruitland Park, Groveland, Haines City, Howey-in-the-Hills, Lady Lake, Lake Alfred, Lake Hamilton, <b>Lakeland2 86536 of 97422</b> , Leesburg, Mascotte, Minneola, Montverde, <b>Mount Doral2 11923 of 12370</b> , Polk City, Tavares, <b>Umatilla2 1466 of 3456</b> , Webster, Wildwood, <b>Winter Haven2 18702 of 33874</b>
9	Counties	Orange3 439,590 of 1,145,956 Osceola2 241,437 of 268,685 Polk3 15,318 of 602,095
	Cities	<b>Apopka3 118 of 41542</b> , Bay Lake, Belle Isle, Edgewood, Kissimmee, Lake Buena Vista, Oakland, Ocoee, <b>Orlando3 91198 of 238300</b> , <b>St. Cloud2 35003 of 35183</b> , Windermere, Winter Garden
	Vtd's	<b>120970124 21177 of 273</b> , <b>120970129 2165 of 69</b> , <b>120970169 216072 of 6433</b> , <b>120970178 211135 of 1158</b> , <b>120970196 212168 of 2465</b> , <b>121050080 216855 of 15990</b>
10	Counties	Orange3 439,210 of 1,145,956 Seminole4 257,135 of 422,718
	Cities	Altamonte Springs, Apopka3 30044 of 41542, Casselberry, <b>Lake Mary2 15 of 13822</b> , Longwood2 113137 of 13657, <b>Maitland2 14126 of 15751</b> , <b>Orlando3 67019 of 238300</b> , <b>Oviedo2 226 of 33342</b> , <b>Winter Park2 23555 of 27852</b> , <b>Winter Springs2 31031 of 33282</b>
	Vtd's	<b>121170135 213376 of 3389</b> , <b>121170136 21200 of 216</b>

SPUBC0104 Plan Splits		
11	Countries	Brevard Seminole 4126,903 of 422,718 Volusia 2126,066 of 494,593
	Cities	Cape Canaveral, Cocoa, Cocoa Beach, <b>Deltona 212847 of 85182, Edgewater 2110736 of 20750, Grant-Valkaria, Indian Harbour Beach, <b>Lake Mary 2113817 of 13822, Longwood 21520 of 13657, Malabar, Melbourne, Melbourne Beach, Melbourne Village, Oak Hill, <b>Oviedo 2133116 of 33342, Palm Bay, Palm Shores, Rockledge, Sanford 3132726 of 53570, Satellite Beach, Titusville, West Melbourne, <b>Winter Springs 212251 of 33282</b></b></b></b>
	Vtd's	<b>1211701351213 of 3389, 12117013612116 of 216, 12127008612111 of 4670, 1212700911212808 of 4983, 1212700931214 of 3346, 1212702191215228 of 5415, 1212702211211226 of 1420</b>
12	Countries	Hillsborough 41448,332 of 1,229,226 Polk 31248,012 of 602,095
	Cities	Bartow, <b>Dunedin 213713 of 3717, Eagle Lake, Fort Meade, Frostproof, Highland Park, Hillcrest Heights, <b>Lakeland 2110886 of 97422, Lake Wales, Mulberry, Plant City, <b>Tampa 215923 of 335709, Temple Terrace 218887 of 24541, <b>Winter Haven 211172 of 33874</b></b></b></b>
	Vtd's	<b>12105004312188 of 6707</b>
13	Countries	Hillsborough 41696,345 of 1,229,226
	Cities	<b>Tampa 21329786 of 335709, <b>Temple Terrace 2115654 of 24541</b></b>
	Vtd's	<b>1205700831212 of 4534, 1205701501211642 of 1653, 1205701731213980 of 4186, 120570210121679 of 720, 1205705191213 of 2400</b>
14	Countries	Hillsborough 411,451 of 1,229,226 Pasco Pinellas 21220,197 of 916,542
	Cities	<b>Clearwater 2130681 of 107685, Dade City, <b>Dunedin 2126580 of 35321, New Port Richey, Safety Harbor, St. Leo, San Antonio, Tarpon Springs, Zephyrhills</b></b>
	Vtd's	<b>121030271121120 of 3667, 121030275121158 of 3712</b>
15	Countries	Pinellas 21696,345 of 916,542
	Cities	Belleair, Belleair Beach, Belleair Bluffs, Belleair Shore, <b>Clearwater 2177004 of 107685, <b>Dunedin 218741 of 35321, Gulfport, Indian Rocks Beach, Indian Shores, Kenneth City, Largo, Madeira Beach, North Redington Beach, Pinellas Park, Redington Beach, Redington Shores, St. Pete Beach, St. Petersburg, Seminole, South Pasadena, Treasure Island</b></b>
	Vtd's	<b>1210302711212547 of 3667, 1210302751213554 of 3712</b>
16	Countries	Hillsborough 4173,098 of 1,229,226 Manatee Sarasota 21300,414 of 379,448
	Cities	Anna Maria, Bradenton, Bradenton Beach, Holmes Beach, Longboat Key, Palmetto, Sarasota, Venice
	Vtd's	<b>1211500271215537 of 5875</b>
17	Countries	Broward 61186,812 of 1,748,066 Miami-Dade 51509,533 of 2,496,435
	Cities	<b>Aventura 211896 of 35762, Biscayne Park, El Portal, <b>Hallandale Beach 2111743 of 37113, <b>Hialeah 212 of 224669, <b>Hollywood 4153580 of 140768, <b>Miami 2198272 of 399457, <b>Miami Gardens 21106208 of 107167, <b>Miami Shores 218077 of 10493, <b>Miramar 2163795 of 122041, <b>North Miami Beach 2149611 of 58786, <b>North Miami Beach 2134597 of 41523, <b>Opa-lockal 2114889 of 15219, Pembroke Park, <b>Pembroke Pines 3137436 of 154750, West Park</b></b></b></b></b></b></b></b></b></b></b></b>
	Vtd's	<b>120860108121902 of 1921, 120860120121994 of 1889, 120860135121874 of 2352, 1208604541212 of 3346</b>
18	Countries	Indian River Martin Okeechobee Osceola 2127,248 of 268,685 Palm Beach 4166,966 of 1,320,134 St. Lucie
	Cities	Fellsmere, Fort Pierce, Indian River Shores, <b>Jupiter 2136274 of 55156, Jupiter Inlet Colony, Ocean Breeze Park, Okeechobee, Orchid, Port St. Lucie, <b>St. Cloud 21180 of 35183, St. Lucie Village, Sebastian, Sewall's Point, Stuart, Tequesta, Vero Beach</b></b>
	Vtd's	<b>12097012412196 of 273, 1209701291214 of 69, 120970169121361 of 6433, 12097017812123 of 1158, 120970196121297 of 2465, 120990020121535 of 831, 1209900641211692 of 2468, 12099006512197 of 1957</b>
19	Countries	Charlotte 2177,591 of 159,978 Leel
	Cities	Bonita Springs, Cape Coral, Fort Myers, Fort Myers Beach, Punta Gorda, Sanibel
20	Countries	Charlotte 2182,387 of 159,978 Collier DeSoto Glades Hardee Hendry Highlands Sarasota 2179,034 of 379,448
	Cities	Arcadia, Avon Park, Bowling Green, Clewiston, Everglades, LaBelle, Lake Placid, Marco Island, Moore Haven, Naples, North Port, Sebring, Wauchula, Zolfo Springs
	Vtd's	<b>121150027121338 of 5875</b>
21	Countries	Broward 61197,391 of 1,748,066 Palm Beach 41498,954 of 1,320,134

SPUBC0104 Plan Splits	
Cities	Atlantis, Boca Raton 3118030 of 84392, Boynton Beach 3138903 of 68217, Cloud Lake, Coconut Creek 2148532 of 52909, Coral Springs 2171269 of 121096, Deerfield Beach 3132780 of 75018, Delray Beach 3117988 of 60522, Glen Ridge, Golf, Greenacres 213720 of 37573, Lake Clarke Shores, Lake Worth 314243 of 34910, Lantana, Margate 3118804 of 53284, Palm Springs, Parkland, Pompano Beach 311447 of 99845
Vid's	120990279 211440 of 1495, 120990286 2110 of 1841, 120990338 212236 of 2237, 120990439 21698 of 1879, 120990811 212 of 3545
Counties	Broward 61190,126 of 1,748,066 Palm Beach 41506,218 of 1,320,134
Cities	Belle Glade, Boca Raton 3155025 of 84392, Boynton Beach 314706 of 68217, Briny Breezes, Dania Beach 317974 of 29639, Deerfield Beach 3114713 of 75018, Delray Beach 3113668 of 60522, Fort Lauderdale 3168661 of 165521, Greenacres 2133853 of 37573, Gulf Stream, Highland Beach, Hillsboro Beach, Hollywood 41997 of 140768, Hypoluxo, Juno Beach, Jupiter 2118882 of 55156, Jupiter Inlet Colony, Lake Park 212531 of 8155, Lake Worth 318348 of 34910, Lantana 312648 of 10423, Lauderdale-by-the-Sea, Lazy Lake, Lighthouse Point, Loxahatchee Groves, Manalapan, North Palm Beach, Oakland Park 2119406 of 41363, Ocean Ridge, Pahokee, Palm Beach, Palm Beach Gardens, Palm Beach Shores, Pompano Beach 3151063 of 99845, Riviera Beach 218461 of 32488, Royal Palm Beach, Sea Ranch Lakes, South Bay, South Palm Beach, Wellington, West Palm Beach 2140772 of 99919, Wilton Manors 218321 of 11632
Vid's	120990020 21296 of 831, 120990064 21776 of 2468, 120990065 211860 of 1957, 120990188 21821 of 2200, 120990207 21490 of 3434, 120990244 211525 of 1581, 120990279 2155 of 1495, 120990286 211831 of 1841, 120990303 212169 of 2796, 120990758 211 of 1365, 120990769 21362 of 2592, 120990770 21396 of 3218, 120990771 21726 of 727, 120990772 212166 of 3364, 120990779 212289 of 4107, 120990793 212169 of 2228
Counties	Broward 61448,349 of 1,748,066 Palm Beach 41247,996 of 1,320,134
Cities	Boca Raton 3111337 of 84392, Boynton Beach 3124608 of 68217, Coconut Creek 214377 of 52909, Dania Beach 319180 of 29639, Deerfield Beach 3127525 of 75018, Delray Beach 3128866 of 60522, Fort Lauderdale 3184127 of 165521, Haverhill, Hollywood 413086 of 140768, Lake Park 215624 of 8155, Lake Worth 3122319 of 34910, Lantana 317775 of 10423, Lauderdale Lakes, Lauderdale 2166786 of 66887, Mangonia Park, Margate 3120424 of 53284, North Lauderdale, Oakland Park 2121957 of 41363, Palm Beach Gardens, Plantation 2136514 of 84955, Pompano Beach 3147335 of 99845, Riviera Beach 2124027 of 32488, Royal Palm Beach, Sunrise 3123531 of 84439, Tamarac 2119801 of 60427, West Palm Beach 2159147 of 99919, Wilton Manors 213311 of 11632
Vid's	120990188 211379 of 2200, 120990207 212944 of 3434, 120990244 2156 of 1581, 120990303 21627 of 2796, 120990338 211 of 2237, 120990439 211181 of 1879, 120990758 211364 of 1365, 120990769 212230 of 2592, 120990770 212822 of 3218, 120990771 211 of 727, 120990772 213298 of 3364, 120990779 211818 of 4107, 120990793 2159 of 2228, 120990811 213543 of 3545
Counties	Broward 61216,123 of 1,748,066 Miami-Dade 51480,222 of 2,496,435
Cities	Cooper City 2128545 of 28547, Davie 217182 of 91992, Doral, Hialeah 21224667 of 224669, Hialeah Gardens, Medley, Miami Gardens 21959 of 107167, Miami Lakes, Miami Springs, Miramar 2158246 of 122041, Opa-locka 21330 of 15219, Pembroke Pines 31112020 of 154750, Southwest Ranches 217038 of 7345, Sunrise, Sweetwater 211785 of 13499, Virginia Gardens, Weston 213000 of 65333
Vid's	120860454 213344 of 3346, 120860695 21106 of 883
Counties	Broward 61509,265 of 1,748,066 Miami-Dade 51187,080 of 2,496,435
Cities	Aventura 2133866 of 35762, Bal Harbour, Bay Harbor Islands, Cooper City 212 of 28547, Coral Springs 2149827 of 121096, Dania Beach 3112485 of 29639, Davie 2184810 of 91992, Fort Lauderdale 3112733 of 165521, Golden Beach, Hallandale Beach 2125370 of 37113, Hollywood 4183105 of 140768, Indian Creek, Lauderdale 21101 of 66887, Margate 3114056 of 53284, Miami Beach 2187317 of 87779, Miami Shores 212416 of 10493, North Bay Village, North Miami 219175 of 58786, North Miami Beach 216926 of 41523, Pembroke Pines 315294 of 154750, Plantation 2148441 of 84955, Southwest Ranches 21307 of 7345, Sunny Isles Beach, Sunrise 3160908 of 84439, Surfside, Tamarac 2140626 of 60427, Weston 2162333 of 65333
Vid's	120860108 211019 of 1921, 120860120 21895 of 1889, 120860135 211478 of 2352
Counties	Miami-Dade 51696,345 of 2,496,435
Cities	Coral Gables 2145809 of 46780, Doral, Key Biscayne, Miami 21301185 of 399457, Miami Beach 21462 of 87779, South Miami, Sweetwater 2111714 of 13499, Virginia Gardens, West Miami
Vid's	120860695 21777 of 883, 120861012 21972 of 989, 120861025 21212 of 292
Counties	Miami-Dade 51623,255 of 2,496,435 Monroe
Cities	Coral Gables 21971 of 46780, Cutler Bay, Florida City, Homestead, Islamorada, Village of Islands, Key Colony Beach, Key West, Layton, Marathon, Palmetto Bay, Pinecrest
Vid's	120861012 2117 of 989, 120861025 2180 of 292





Florida House of Representatives  
Congressional Redistricting Subcommittee

November 3, 2011

# Tab 1



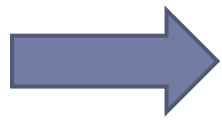
# Plan Name and Population Fundamentals

<b>Plan File Name: SPUBC0104</b>	
<b>Plan Population Fundamentals</b>	
Total Population Assigned:	18,801,310 of 18,801,310
Ideal District Population::	696,344
District Population Remainder:	22
District Population Range:	696,344 to 696,345
District Deviation Range:	0 To 1
Deviation:	(-0.00) To 0.00 Total 0.00%



# Public Plan Name

---



**S**

**H**



**PUB**



**C**

**H**

**S**



**9001**



# Legislative Plan Name

---



**H**



**001**



**C**

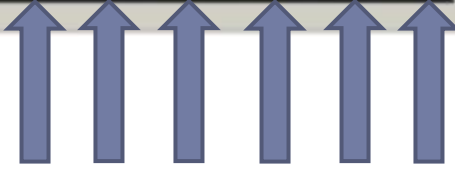


**0123**



# Population Fundamentals

<b>Plan File Name: SPUBC0104</b>	
<b>Plan Population Fundamentals</b>	
Total Population Assigned:	18,801,310 of 18,801,310
Ideal District Population::	696,344
District Population Remainder:	22
District Population Range:	696,344 to 696,345
District Deviation Range:	0 To 1
Deviation:	(-0.00) To 0.00 <b>Total 0.00%</b>



# Plan Geography Fundamentals

Plan Type: Congress - 27 Districts	
<b>Plan Geography Fundamentals:</b>	
Census Blocks Assigned:	484,481 out of 484,481
Number Non-Contiguous Sections:	1 (normally one)
County or District Split :	21 Split of 67 used
City or District Split :	77 Split of 411 used
VTD's Split :	134 Split of 9,436 used



Plan T
Plan C
Census
Number
County

City or District Split :	77 Split of 411 used
VTD's Split :	134 Split of 9,436 used



# Number of Districts By Race Language

Number of Districts by Race Language						
	20%-30%	30%-40%	40%-50%	50%-60%	60%+	
Current Black VAP	5	3	3	2	0	
New Black VAP	4	3	3	1	0	
Current Hisp VAP	8	6	3	3	2	
New Hisp VAP	8	6	3	3	2	





## **Geographical Compactness Measurements**

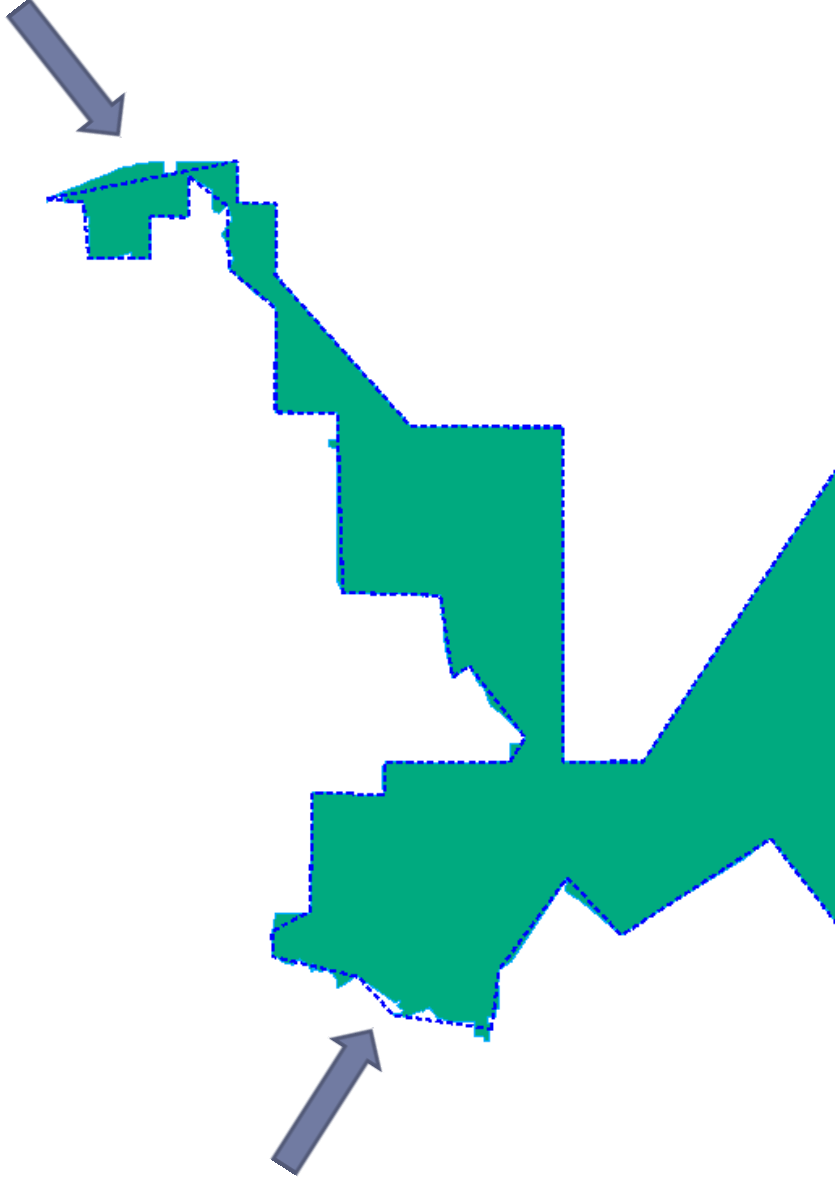
---

- **Base Shapes**
- **Circle - Dispersion**
- **Convex Hull – Indentation**



# Base Shapes Measurement

0 0.1 degrees

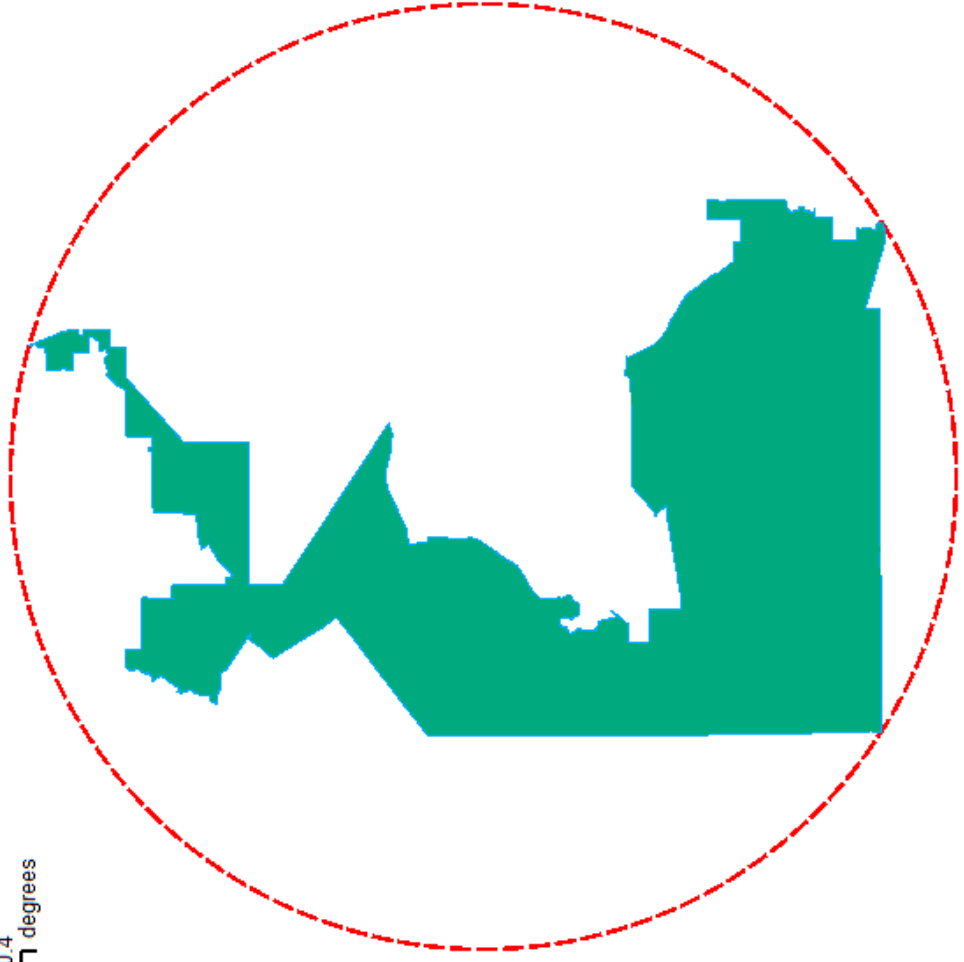


# Base Shapes Measurement

Plan Name:	SPUBC0104			
Spatial Measurements - Map Based				
	Base Shapes			
	Perimeter	Area	P/A	
C0104-Map	8,300	65,934	12.58%	
Current Map	10,081	65,922	15.29%	
C0104-Simple	7,540	65,850	11.45%	
Current Map	9,170	65,895	13.91%	

# Circle – Dispersion Measurement

0 0.4 degrees



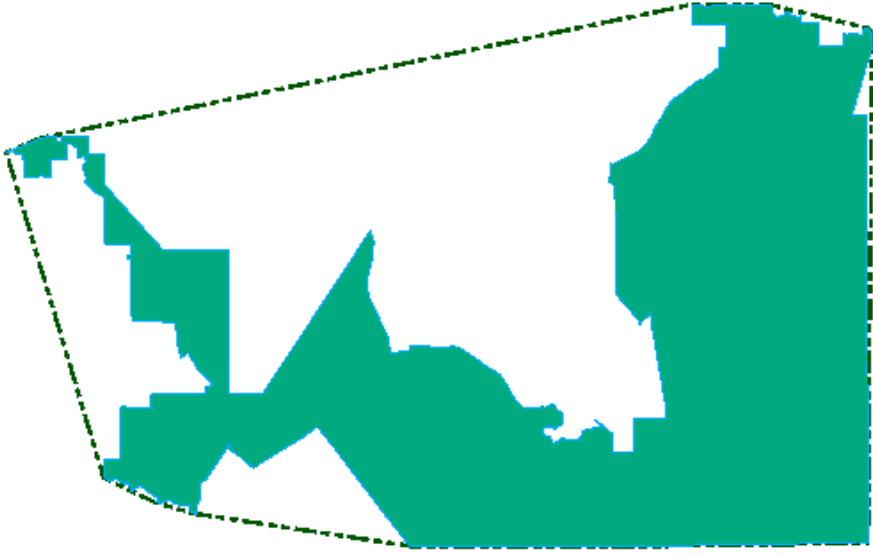
# Circle - Dispersion Measurement

	Circle - Dispersion					
	Perimeter	Area	P/A	Pc/P	A/Ac	
C0104-Map	7,140	201,049	3.55%	86.02%	32.79%	
Current Map	7,767	252,642	3.07%	77.04%	26.09%	
C0104-Simple				94.70%	32.75%	
Current Map				84.71%	26.08%	



# Convex Hull – Indentation Measurement

0 0.4 degrees



# Convex Hull – Indentation Measurement

		Convex Hull Indentation								
Perimeter	Area	P/A	Pc/P	A/Ac	Width	Height	W+H			
5,618	93,458	6.01%	67.67%	70.54%	1,710	1,689	3,420			
6,041	105,234	5.74%	59.91%	62.64%	1,898	1,830	3,797			
			74.50%	70.45%						
			65.87%	62.61%						



# Population Density – Straight Line

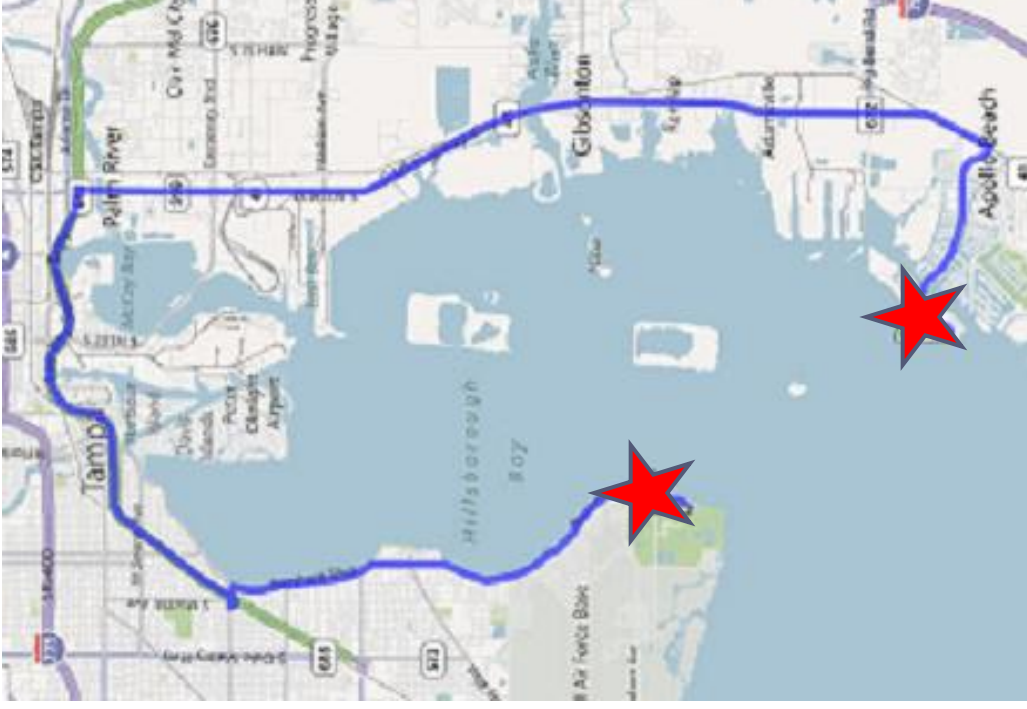
	Straight line in miles apart			
	Pop	VAP	VAP Black	VAP Hispanic
C0104-Map	23	23	24	16
Current Map	29	29	30	22

VTD's





# Bing Density Measure



# Population Density – Fastest Route

Miles to drive by fastest route			
Pop	VAP	VAP Black	VAP Hispanic
30	30	31	21
38	38	39	29



# Population Density – Minutes Driven

Minutes to drive by fastest route				
Pop	VAP	VAP Black	VAP Hispanic	
40	40	39	30	
48	48	47	38	



# District By District Comparison

---

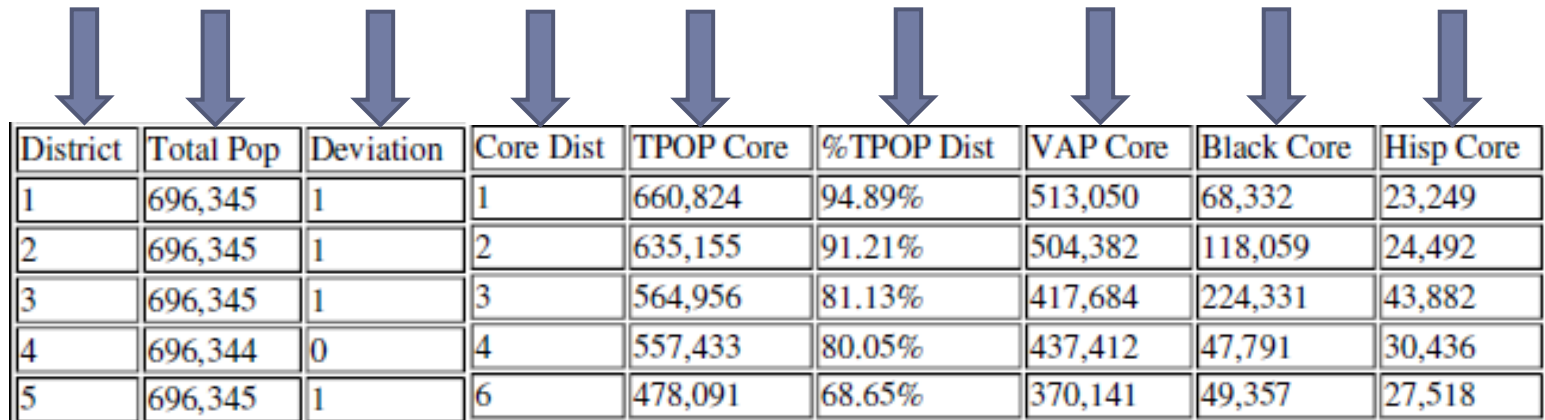
			Voting Age Population				
District	Total Pop	Deviation	TVAP	Black	%Black	Hispanic	%Hispanic
1	696,345	1	541,731	71,463	13.19	24,628	4.54
2	696,345	1	552,534	132,083	23.90	26,268	4.75
3	696,345	1	518,257	258,328	49.84	55,900	10.78
4	696,344	0	540,271	59,665	11.04	36,232	6.70
5	696,345	1	541,437	83,377	15.39	37,108	6.85

Split Geography			District Core					
County	City	VTD	Core Dist	TPOP Core	%TPOP Dist	VAP Core	Black Core	Hisp Core
1	1	0	1	660,824	94.89%	513,050	68,332	23,249
2	2	0	2	635,155	91.21%	504,382	118,059	24,492
8	12	0	3	564,956	81.13%	417,684	224,331	43,882
2	2	1	4	557,433	80.05%	437,412	47,791	30,436
5	5	0	6	478,091	68.65%	370,141	49,357	27,518



# District Core

---



District	Total Pop	Deviation	Core Dist	TPOP Core	%TPOP Dist	VAP Core	Black Core	Hisp Core
1	696,345	1	1	660,824	94.89%	513,050	68,332	23,249
2	696,345	1	2	635,155	91.21%	504,382	118,059	24,492
3	696,345	1	3	564,956	81.13%	417,684	224,331	43,882
4	696,344	0	4	557,433	80.05%	437,412	47,791	30,436
5	696,345	1	6	478,091	68.65%	370,141	49,357	27,518



# Comparing Districts – New vs. Old

---

SPUBC0104 Compare new district Core to the Current Districts								
District	Current Dist	Common Pop	Pop of Part	Common VAP	Black VAP	% of the Black	Hispanic VAP	% or the Hispanic
7	5	362,056	51.99%	296,378	3.75%	30.84%	6.50%	44.32%
	6	226,145	32.47%	183,587	8.30%	42.28%	9.83%	41.50%
	8	91,640	13.16%	70,808	9.25%	18.17%	8.18%	13.31%
	2	16,422	2.35%	13,278	8.64%	3.18%	2.81%	0.85%
	3	82	0.01%	69	0%	0%	1.44%	0.00%



# Examining Plan Splits

SPUBC0104 Plan Splits	
1	Counties Escambia Holmes 2 11,489 of 19,927 Okaloosa Santa Rosa Walton
	Cities Century, Cinco Bayou, Crestview, De Funiak Springs, Destin, Esto, Fort Walton Beach, Freeport, Gulf Breeze, Jay, Laurel Hill, Mary Esther, Milton, Niceville, Noma, Paxton, Pensacola, <b>Ponce de Leon 2 1587 of 598</b> , Shalimar, Valparaiso
2	Counties Bay Calhoun Franklin Gadsden Gulf Holmes 2 8,438 of 19,927 Jackson Jefferson Leon Liberty Madison 2 4,028 of 19,224 Taylor Wakulla Washington
	Cities Alford, Altha, Apalachicola, Bascom, Blountstown, Bonifay, Bristol, Callaway, Campbellton, Carrabelle, Caryville, Chattahoochee, Chipley, Cottondale, Ebro, Graceville, Grand Ridge, Greensboro, Greenville, Greenwood, Gretna, Havana, Jacob City, Lynn Haven, <b>Madison 2 599 of 2843</b> , Malone, Marianna, Mexico Beach, Midway, Monticello, Panama City, Panama City Beach, Parker, Perry, <b>Ponce de Leon 2 11 of 598</b> , Port St. Joe, Quincy, St. Marks, Sneads, Sopchoppy, Springfield, Tallahassee, Vernon, Wausau, Westville, Wewahitchka
3	Counties Alachua 2 33,345 of 247,336 Clay 2 17,857 of 190,865 Duvall 3 260,962 of 1,145,956 Lakeland 4 20,413 of 297,052 Marion 2 31,849 of 331,298 Orange 3 267,156 of 1,145,956 Putnam 3 32,356 of 74,364 Seminole 4 32,407 of 422,718

**Ponce de Leon|2|11 of 598,**

**Ponce de Leon | 2 | 11 of 598**





Terms:

1. Total population assigned – This figure should always be 18,801,310 for a full plan. If it is low it means somewhere on the plan there are some blocks unassigned to a district.
2. Ideal district population – This is the number you get when you divide the total population (18,801,310) by the number of districts. This does not include the remainder of partial people.
3. District Population remainder – This is the number of people left over after dividing the States total population by the number of districts. In congressional plans this is the number of districts you will have to add a person to get evenly distributed population among the districts.
4. District population range – This is the range between the district with the least people in the district and the district with the most people in the district.
5. District population deviation – The number of people under and over the ideal district population.
6. Deviation – The percentage of people over and under the district ideal population. The total deviation is the absolute value of the percentage of the population under and the percentage of the population over added together.
7. Census blocks assigned – The number of census blocks assigned. If every census block is assigned this number should be 484,481 for a full plan.
8. Non-contiguous sections – This is where parts of a district do not connect to each other. In a finished plan this number should be one. The Dry Tortugas do not connect and is the one non – contiguous geography.
9. Split geography – This is the number of geographic polygons that have parts of their populations split into 2 different districts. If the district can fit fully in the county or city and yet part of the county or city is not used by the district then this is **NOT** counted. When listing the splits in the report the name is listed first then a bar ‘|’ comes next and then the total splits in the geography. Followed by another bar ‘|’ the population the district has in the geography and the total population for that piece of geography. Example: Ponce de Leon|2|11 of 598
10. City splits – Only incorporated cities and towns that are recognized by Florida Law are included in this number. Census designated places like \_\_\_\_\_ are not included.
11. VTD – This stands for Voter Tabulation Districts. These are areas that the each County Supervisor of Election has designated that if used are to minimize the dividing of neighborhoods and the invariant drawing of Congressional, House and Senate lines within close proximity so as to isolate small groups of voters that would need a special ballot that may lead to the revealing of their vote.
12. VAP – This stands for Voting Age Population. Other than total population, most of the numbers in this report are done based on voting age population.
13. Current Black VAP – This refers to the Census Black Voting Age Population of the current map in Census 2012 numbers.
14. New Black VAP – This is the Black Voting Age Population of the new district that the report is based on.
15. Spatial measurements – These are measurements that measure geography (physical area) rather than population based measurements

16. Base shapes – Are the underlying district shapes. What does this mean?
17. Perimeter – This is the distance in miles that you would have to travel if you went all the way around a geographic shape.
18. Simplified perimeter – This is the computer generated simplified border or perimeter of the district. This is used to help adjust the numbers for districts that borders follow rivers and water so they are not penalized by districts that follow an interstate.
19. Area – This is the area in square miles of the underlying geography.
20. P/A – This is a shorthand meaning perimeter divided by the area
21.  $P_c/P$  – This is shorthand meaning the perimeter on the circle or convex hull depending on the section divided by perimeter.
22.  $A/A_c$  - This is shorthand meaning the area of the district divided by the circle or convex hull depending area.
23. W+H – This is the simple width plus the height on the district added together.
24. Width – means the distance in miles from the most western part of the district to the most eastern part of the district in a straight east to west line.
25. Height – Height here means the distance in miles from the most northern part of the district to the most southern part of the district in straight up and down line.
26. Circle –Dispersion – The smallest circle that completely encloses a district is one of the shapes that many compactness measures use to compare to the district to measure how dispersed the district is. The closer the district shapes is to the circle or convex hull, the better the district for those that use this kind of compactness measure. A square or the circle with the same perimeter as the district are other similar measures.
27. Convex Hull – Indentation – A convex hull measured against the district is the other major shape that is used to measure the amount of indents or fingers that a district has. It draws an outline around the district and measures that shape.
28. Population density measures – These are measures that try to measure the closeness of people to each other. They are population and distance based rather than shape based.
29. Straight line in miles apart – This is a measure that we have made on each district that measures the distance between the center of each census VTD and each other VTD in the district. Then the population used by the district in each VTD is added together. The resulting population number is then combined for each VTD combination in the district. A second number is made by take the miles between each VTD and multiplying it by the population. The totals of these numbers are then divided to come up with the average distance someone would have to travel in a straight line to reach all the voters in the district. The lower this number the more compact the district. In the report the number for population, VAP Black and Hispanic should all be about the same. If they are not you may want to look to see if a community is somehow being dispersed.
30. Miles to drive by fastest route – This measure is much like the Straight line measure but is based on the drive time between the VTD center points instead of a straight line measure. When this point and the straight line measure are very different you may want to look at the districts to see if you are cutting off voters by an interstate, intercostals waterway or some other barrier.

31. Minutes to drive by fastest route – this is the same as above but with the minutes that will be needed by people to reach the other parts of the district rather than miles.
32. District core – The core of the district is a traditional redistricting standard that tells the number of people that the new district being reported on has in common with the current district. The core is the district that has the most people in common, NOT the district with the same district number.
33. Common pop – The population that both districts have in common.
34. % of black VAP – In the core report this is the percent of Black in the core section that the 2 plans have in common. This is the same for the % of Hispanic VAP
35. Haitian POP – This number is based on the 2009 American Community Survey that gives you a general idea of the number of Haitians in a particular area.
36. W.Indies POP – This is from the American Community Survey and is a general number of people from the different West Indies populations.
37. Reading plan splits – In the last report you can see the cores of the different plans that make up the new district and what percent of the new district is made from the various current districts.



**Florida House of Representatives**

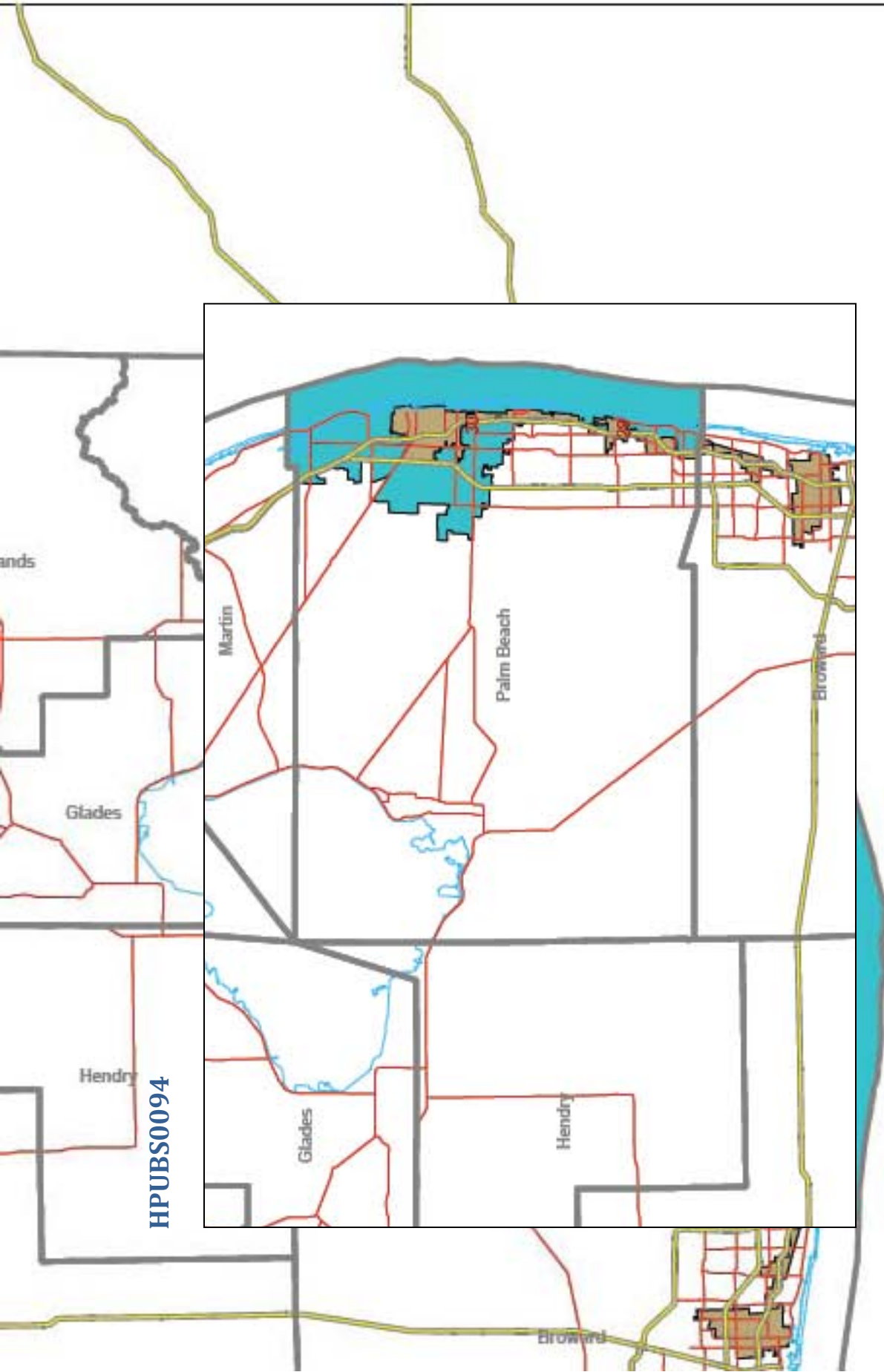
**Senate Redistricting Subcommittee**

**Update Regarding Maps Received Since October 17 for:**

- **The State Senate Map**

**Last Updated: Monday, October 31, 2011**

# HPUBS0094



Policy Issues:

- Proposed Senate District 29: 55.74% Black VAP. Population Deviation: 428.
- Current Senate District 29: 60.73% Black VAP. Population Deviation: -72,889.

# HPUBS0095

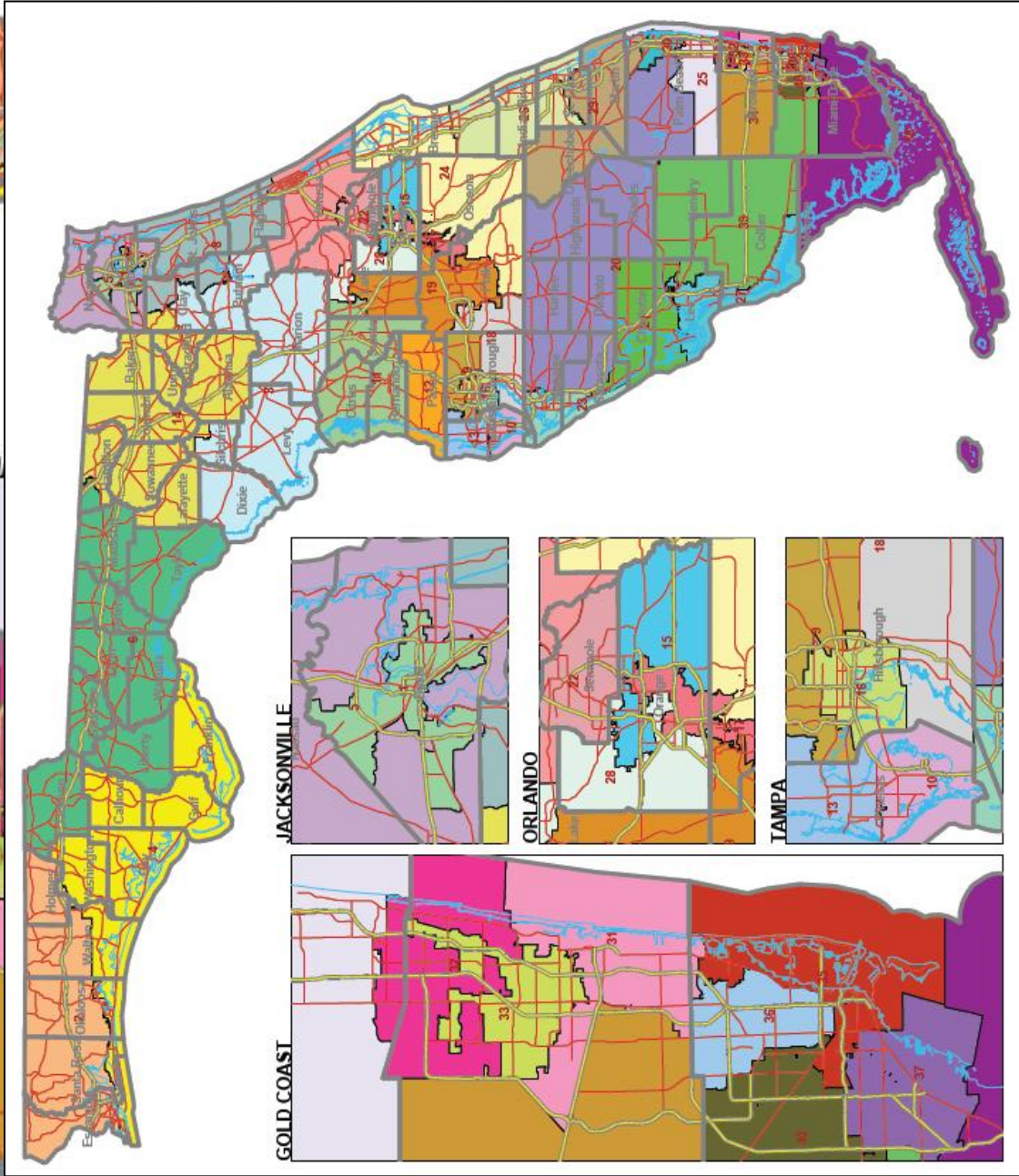


GOLD CO

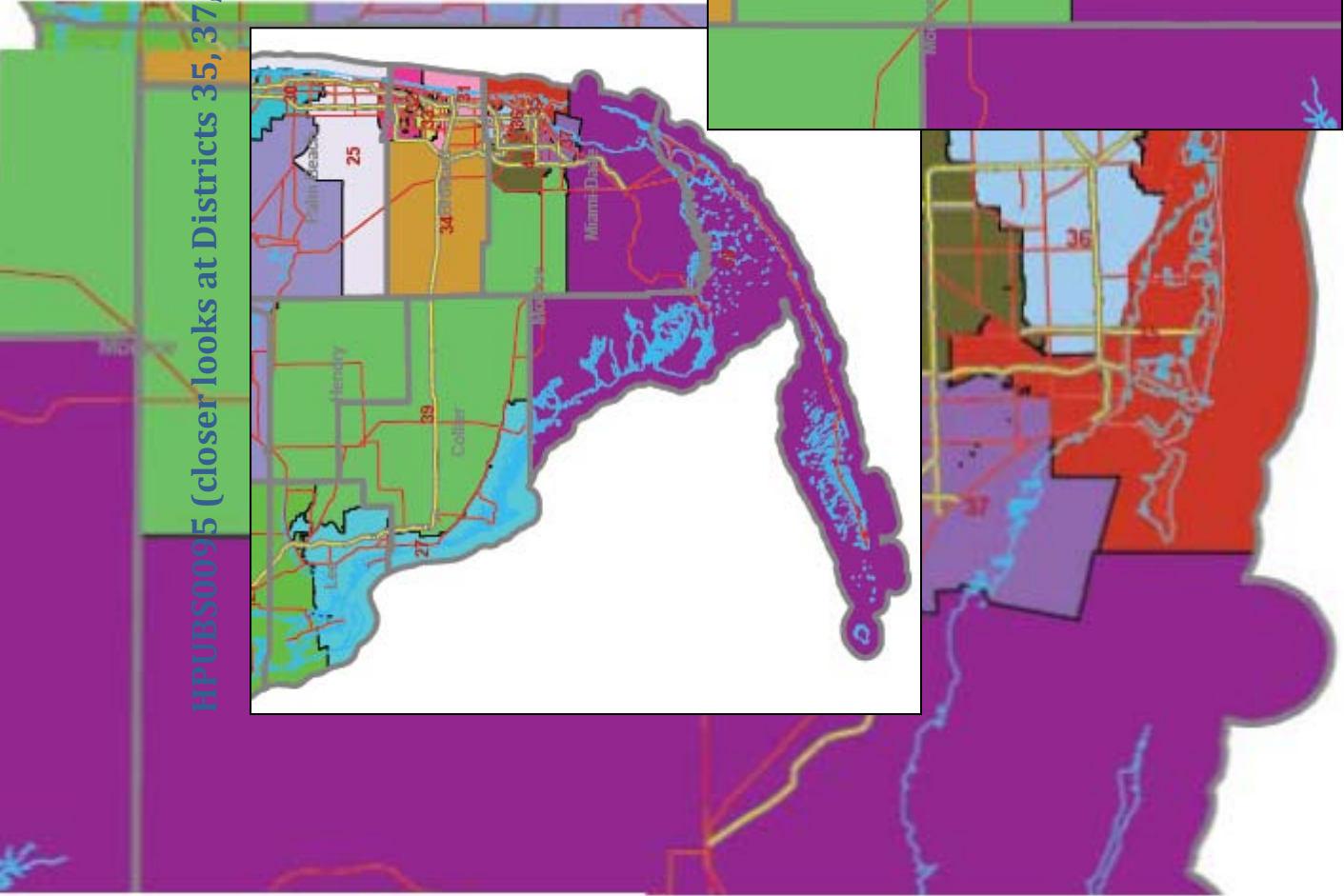
**HPUBS0095**

**Policy Issues:**

- Proposed Senate District 17A, 50.07 Hispanic VAP. Population Deviation: -7,596.
- Creates five majority-minority Hispanic districts (35, 37, 38, 39 and 40). However, in three of those districts the Hispanic voter registration is less than 50%.
- The existing three majority-minority Hispanic districts have voter registrations exceeding 63%.

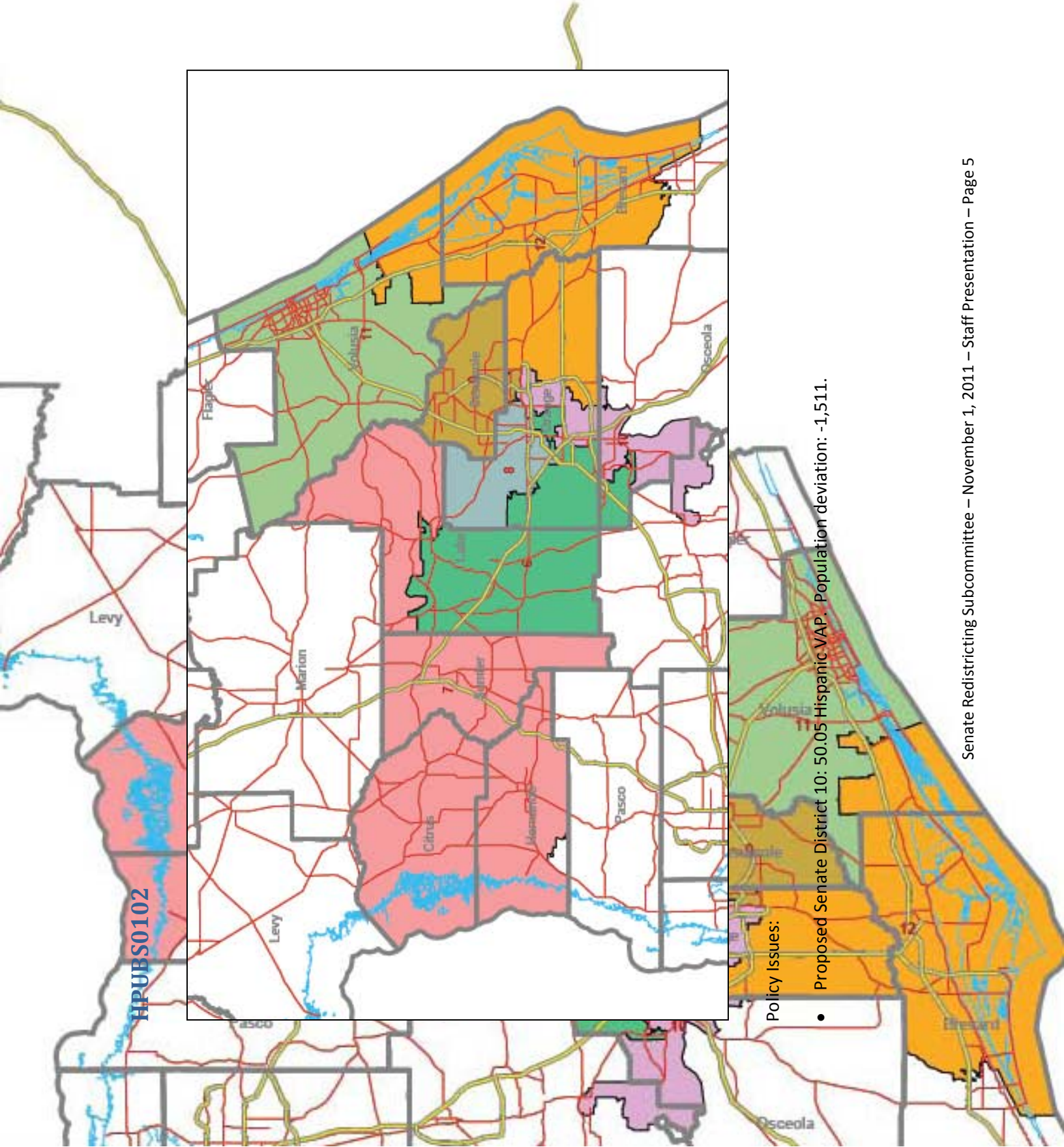


**HPUBS0095 (closer looks at Districts 35, 37, 38, 39 and 40)**





# HPUBS0102



**Policy Issues:**

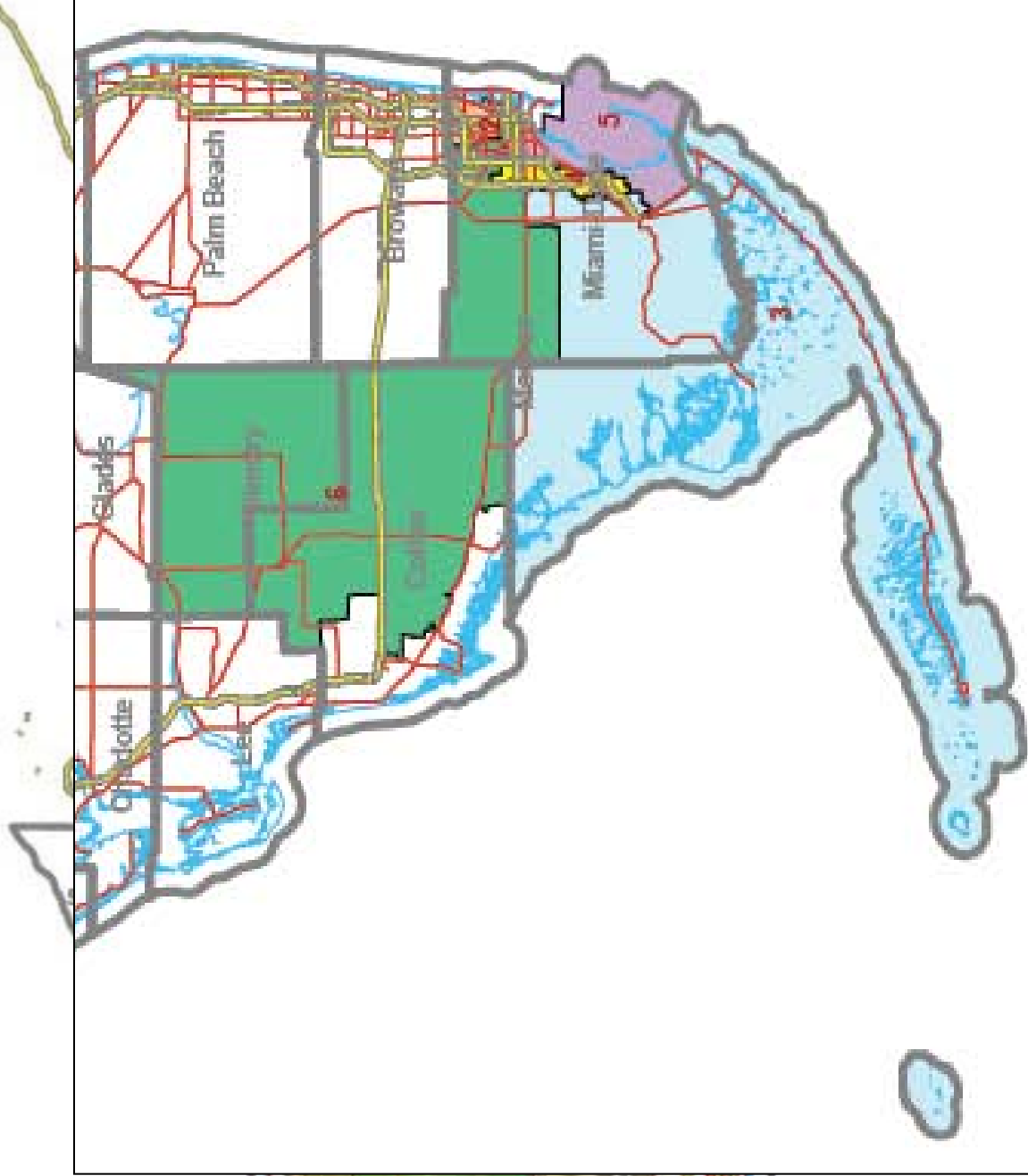
- Proposed Senate District 10: 50.05 Hispanic VAP. Population deviation: -1,511.

# HPUBS0113

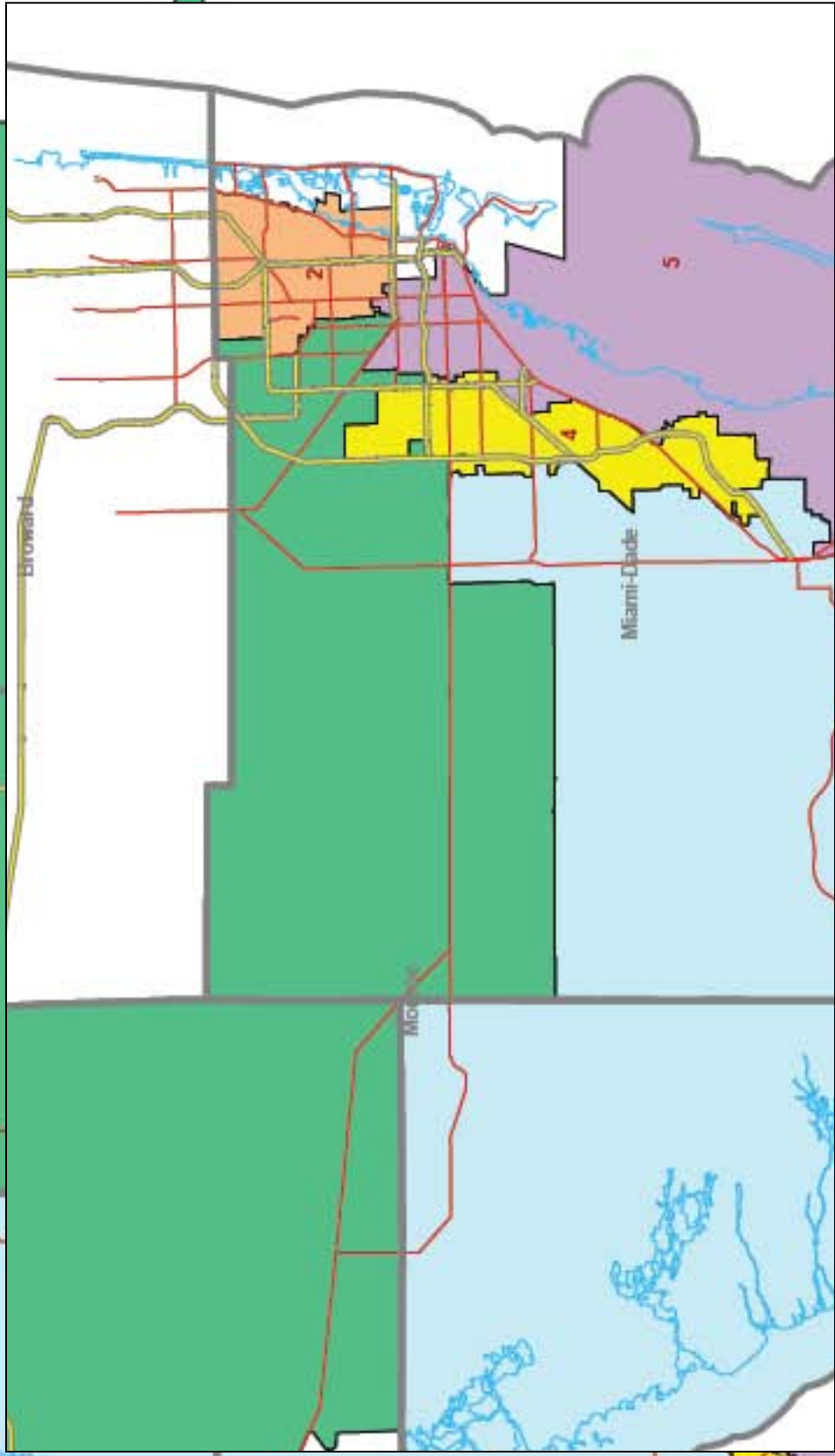
## HPUBS0113

### Policy Issues:

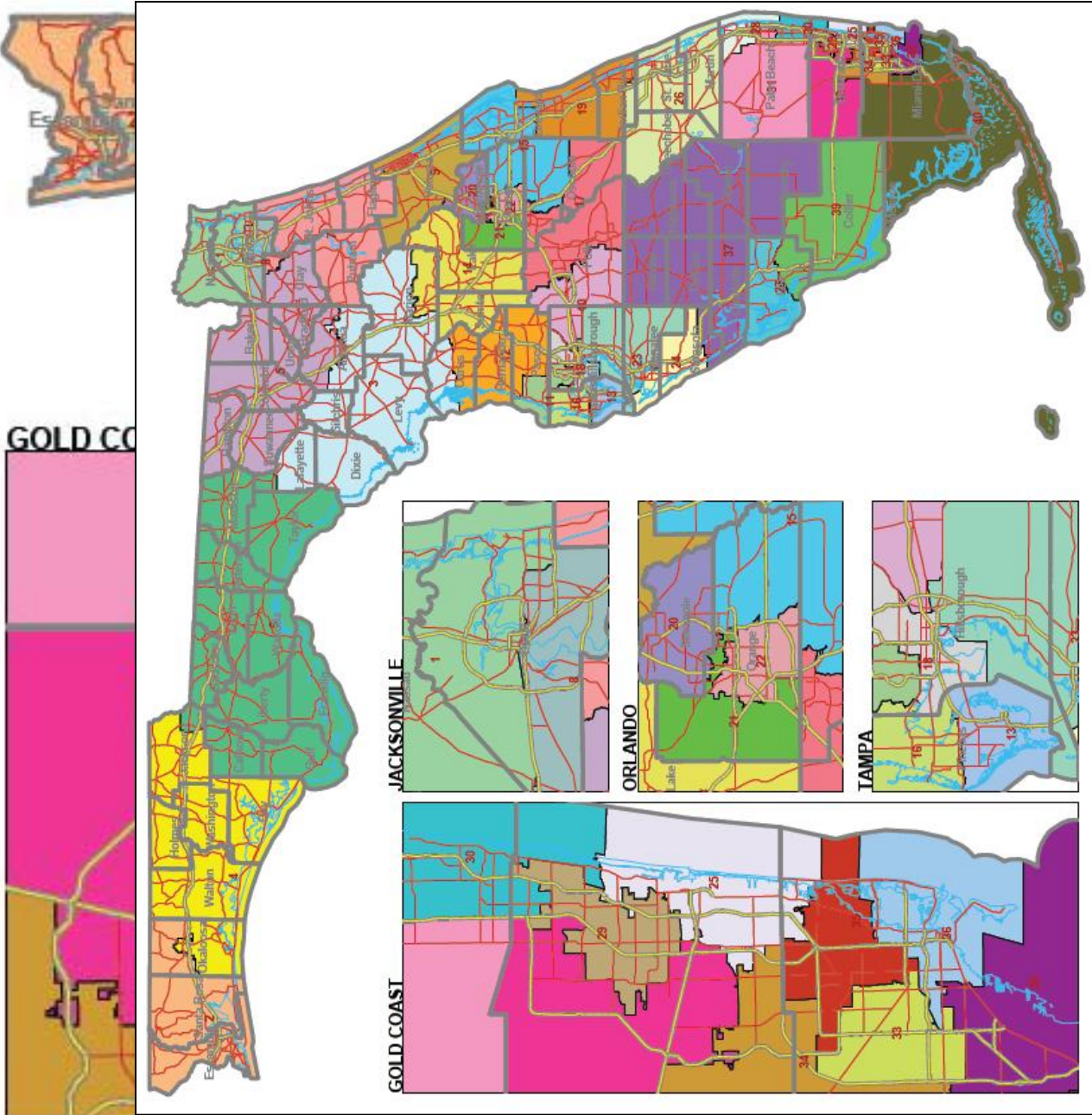
- Proposed Senate Districts 3, 4, 5 and 6 are all majority minority Hispanic, and they all have a Hispanic voter registration above 53.24%.



HPUBS0113 (closer look at Districts 2 and 4)



# HPUBS0117



**HPUBS0117**

Policy Issues:

- Split only 18 cities.

